



SIX YEAR WARRANTY



AN-Mini

A Message from the President

Congratulations on purchasing an Anchor Audio Speaker Monitor, the choice of thousands of satisfied customers including the White House, prestigious universities, school districts nationwide, police and fire departments, and all branches of the U.S. Military. Our products are made of the finest materials and built with pride in the U.S.

We've incorporated the latest technology into your sound system yet kept it simple to use. Just take a few minutes to review this manual to ensure the maximum enjoyment of your Anchor system.

Or, you can view a demonstration video complete with a trouble shooting section at www.anchoraudio.com.

Feel free to call our friendly customer support staff at 1-800-ANCHOR1 with any questions. We love to hear from our customers.

Janet Jacobs, President
on behalf of all Anchor employees

MiniVox Lite

(contains AN-Mini speaker monitor, wired microphone, and SOFT-30 soft case)



CONTENTS

GETTING STARTED	1
BASIC SYSTEM OPERATION	2
BUILT-IN UHF WIRELESS RECEIVER / USING AN OUTBOARD MP3/CD	3
OPERATING THE WIRELESS MICROPHONE/TRANSMITTER	4
BATTERY INSTALLATION / BATTERY MAINTENANCE	5
IMPORTANT SAFETY INSTRUCTIONS.....	6 - 7
AN-MINI TECHNICAL SPECIFICATIONS / TECHNICAL SPECS / ANCHOR WARRANTY	8

GETTING STARTED

Please check your new unit carefully for any damage which may have occurred during shipment. Each Anchor product is carefully inspected at the factory and packed in specially designed boxes for safe transport.

Notify the freight carrier immediately of any damage to the shipping box or product. Repack the unit in the original box and wait for inspection by the carrier's claim agent. Notify your dealer of the pending freight claim.

NOTE: All damage claims must be made with freight carrier!

RETURNING SYSTEMS FOR SERVICE OR REPAIR

For service or repair, please contact the dealer you purchased your system from, call us at 1-800-262-4671, or visit www.AnchorAudio.com, Contact Us page. Our tech support team will issue an RA number for warranted systems, after which, you can ship the item(s) to Anchor for repair. All shipments to Anchor Audio must include an RA number and must be shipped prepaid. C.O.D. shipments and shipments without an RA number will be refused and returned at your expense.

IMPORTANT: Save the shipping box & packing materials, they were specially designed to ship your unit!



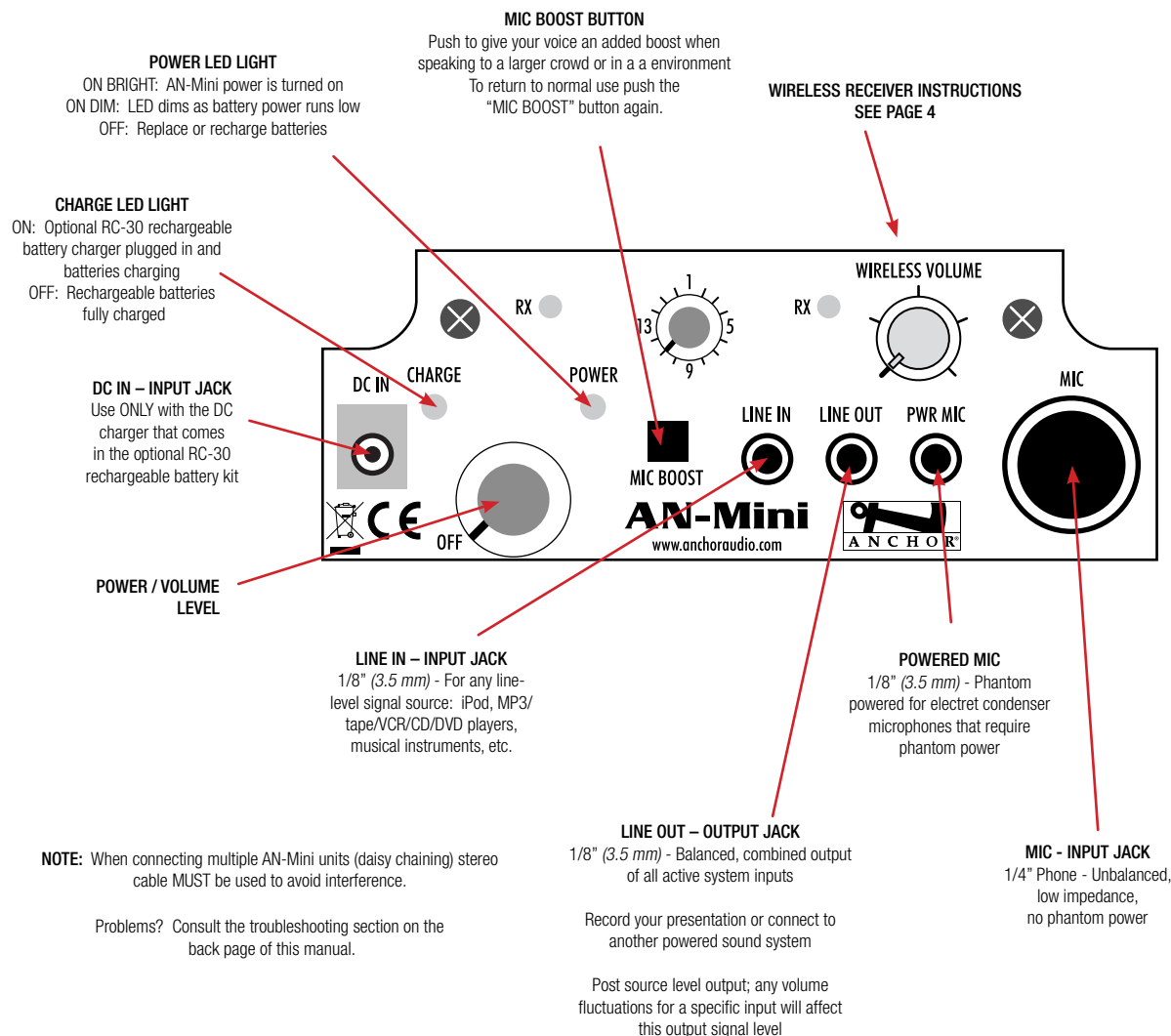
BASIC SYSTEM OPERATION

NOTE: Fully Charge Batteries Before First Use!

1. Position the AN-Mini with the front/speaker facing toward your audience
2. Connect a microphone to the one of the MIC jacks (1/4" MIC jack or 3.5 mm PWR MIC mini jack)
3. Turn the AN-Mini Power/Volume Level knob on, the red POWER LED will light and remain lit during operation
4. Set the microphone power switch to ON
5. Adjust the volume with the Power/Volume Level knob

IMPORTANT: Make all connections with shielded cables to avoid hum, buzzing or interference.

BACK PANEL OF AN-MINIF1





SIX YEAR WARRANTY

DIVERSITY WIRELESS BY ANCHOR AUDIO

Anchor Audio UHF wireless is a 16 channel, diversity wireless system that receives signals with two independent antennae. With diversity wireless the receiver processes the stronger signal, effectively minimizing dropouts and interference from other transmitting sources. The antennae are mounted internally so there are no obstructions or risk of damage. The wireless operates between 540 - 570 MHz.

CHANNEL SELECTION - BUILT-IN RECEIVER

Before you can use your UHF wireless system, you will need to select a wireless frequency, set the built-in receiver, and microphone transmitter, to that channel.

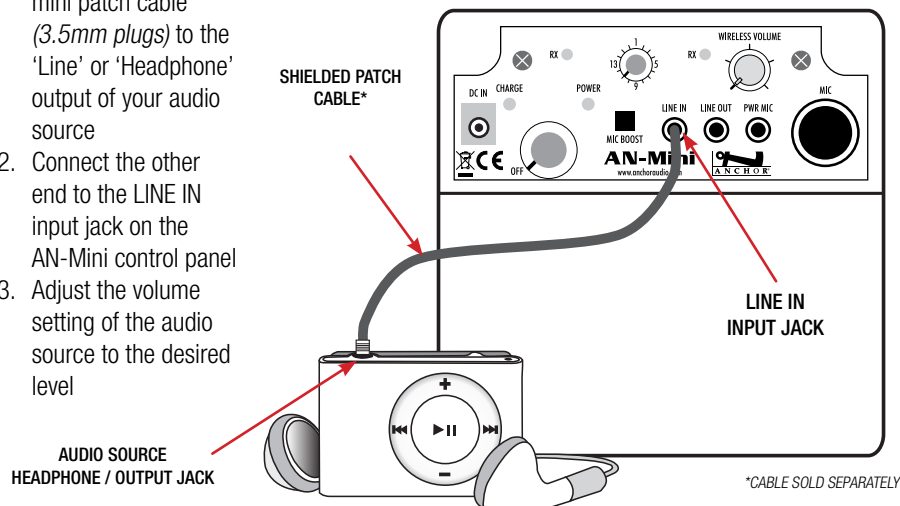
1. Choose from any of the 16 available wireless channels
2. Set the wireless channel selection knob "CHANNEL" to the channel/frequency you have chosen

NOTE: Ongoing wireless interference? The frequency you selected may be in use by other systems in the area! Change channels until you find a clear frequency!

USING AN OUTBOARD MP3/CD/TAPE PLAYER

Use the LINE IN input jack to play pre-recorded material through the AN-Mini. The AN-Mini volume knob controls both the audio source and microphone levels when used simultaneously.

1. Connect a mini-to-mini patch cable (3.5mm plugs) to the 'Line' or 'Headphone' output of your audio source
2. Connect the other end to the LINE IN input jack on the AN-Mini control panel
3. Adjust the volume setting of the audio source to the desired level



AN-MINI WIRELESS CONTROLS



Model Shown: AN-MINIF1

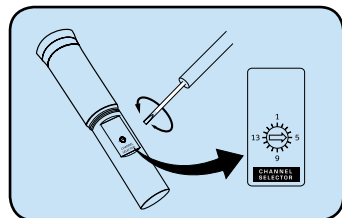


SIX YEAR WARRANTY

OPERATING THE WIRELESS MICROPHONE/TRANSMITTER

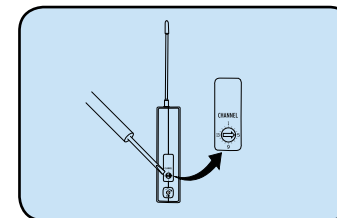
CHANNEL SELECTION - HANDHELD TRANSMITTER

1. Unscrew battery cover on bottom of microphone
2. Set the CHANNEL SELECTOR dial to match the channel setting of your receiver
3. Replace battery cover and tighten firmly



CHANNEL SELECTION - BODY-PACK TRANSMITTER

1. The channel selection dial is located on the side of the transmitter
2. Set the CHANNEL selection dial to match the channel setting of the receiver



USING YOUR WIRELESS MICROPHONES

After you have set the transmitter channel (see above) you are ready to use your wireless microphone:

1. Body-pack transmitter users must insert the mic plug into the transmitter jack marked MIC
2. Push the transmitter power button for two seconds until ON (The red LED will stay on when the mic is turned on. If the red LED flashes, the battery is low)
3. Turn the AN-Mini power switch to ON
4. The RX indicators will light (*only one indicator will light at a time*) when the wireless signal is being transmitted and received

NOTE: When using dual wireless, each microphone must be set to a different channel!

CAUTION: Harmful feedback may occur when walking in front of a sound system or speaker with a wireless microphone. Always point microphone away from speakers!

Waste electrical and electronic products must not be disposed of with household waste. Please recycle where facilities exist. Check with your Local Authority or Retailer for recycling advice.





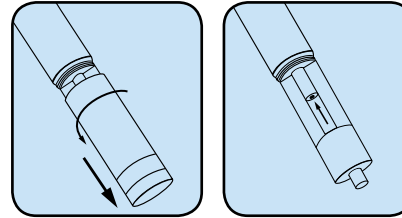
SIX YEAR WARRANTY

BATTERY INSTALLATION

1. Remove the battery compartment cover located underneath the control back panel of the AN-Mini by pressing down the lock tabs of the battery compartment cover
2. Slide out the battery pack from the AN-Mini battery compartment
3. Insert ten 'AA' size batteries (*alkaline or RC-30 rechargeable batteries*) into the battery pack Position the ten battery tubes into the battery pack by following the polarity labels on the battery pack
4. Slide-in the battery pack into the battery compartment Push the battery pack all the way in
5. Replace the battery compartment cover and push cover to lock tabs in place

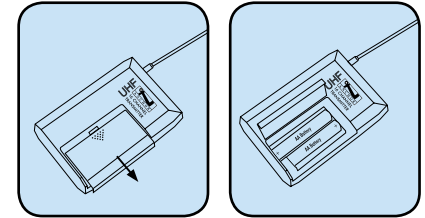
REPLACE BATTERY - HANDHELD TRANSMITTER

1. Unscrew battery cover on bottom of microphone
2. Replace old batteries with two fresh size 'AA' alkaline batteries
3. Replace battery cover and tighten firmly



REPLACE BATTERY - BODY-PACK TRANSMITTER

1. Slide open battery cover on front of transmitter
2. Replace old batteries with two fresh size 'AA' alkaline batteries
3. Replace battery cover by sliding firmly into place



RECHARGEABLE BATTERY KIT (OPTIONAL ACCESSORY)

For applications where the AN-Mini PA system is used frequently, the RC-30 rechargeable battery kit is available. This kit includes 10 rechargeable NiMH batteries and an AC charging adapter. When fully charged the batteries provide approximately 12 hours of operation.

NOTE: New batteries must be charged for 6 hours prior to first use.

Using the RC-30 Recharge Kit

1. Install the 10 rechargeable NiMH batteries into the AN-Mini (see above - Battery Installation)
2. Insert the charger into the Input Jack labeled DC IN on the AN-Mini control panel
3. Plug the AC adapter into a power outlet for 4-6 hours to fully charge

Cycling the Batteries

For extended battery life, we recommend you fully charge the batteries once each month during periods of infrequent use. Always fully recharge batteries before storing.

CAUTION: NEVER recharge other types of batteries. Doing so can result in battery explosion. Use only rechargeable Nickel-Metal Hydride (NiMH) batteries.

NOTE: System Can Be Used During Charging!



RC-30 Rechargeable Battery Kit



SIX YEAR WARRANTY



European Union CE Mark European Union CE Mark

The presence of the CE Mark on Anchor equipment means that it has been designed, tested and certified as complying with all applicable European Union (CE) regulations and recommendations.



Figure WEEE Directive Symbol

Waste Electrical and Electronic Equipment (WEEE)

This symbol on the product or on its packaging indicates that this product must not be disposed of with regular waste. Instead, it is the user responsibility to dispose of waste equipment according to the local laws. The separate collection and recycling of the waste equipment at the time of disposal will help to conserve natural resources and ensure that it is recycled in a manner that protects human health and the environment. For information about where the user can drop off the waste equipment for recycling, please contact your local Anchor representative. See Section for instructions on how to disassemble the equipment for recycling purposes.



Figure DC Voltage Symbol

Direct current symbol

This international symbol implies a Direct voltage or current.

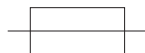


Figure Fuse Symbol

Fuse Symbol

The fuse symbol in the figure above identifies the fuse location on the Anchor System. (Not required if not user replaceable)



Figure On Symbol

On Symbol

The On Symbol in the figure above represents a power switch position on the Anchor System. This symbol represents a Power On condition.



Figure Off Symbol

Off Symbol

The Off Symbol in the figure above represents a power switch position on the Anchor System. This symbol represents a Power Off condition.

Inspection for Damage

The Model AN-Mini is carefully packaged at the factory to minimize the possibility of damage during shipping. Inspect the box for external signs of damage or mishandling. Inspect the contents for damage. If there is visible damage to the instrument upon receipt, inform the shipping company and Anchor Inc. immediately.

	<h3>Inspection for Damage</h3>
	<p>Do not attempt to operate this equipment if there is evidence of shipping damage or you suspect the unit is damaged. Damaged equipment may present additional hazards to you. Contact Anchor technical support for advice before attempting to plug in and operate damaged equipment.</p>

Warning: To reduce the risk of fire or electric shock, do not expose this apparatus to rain or moisture, apparatus shall not be exposed to dripping or splashing and no objects filled with liquids, such as vases, shall be placed on the apparatus.

- minimum distances around the apparatus for sufficient ventilation; the ventilation should not be impeded by covering the ventilation openings with items, such as newspapers, tablecloths, curtains, etc.; no naked flame sources, such as lighted candles, should be placed on the apparatus.

- attention should be drawn to the environmental aspects of battery disposal; the use of apparatus in tropical and/or moderate climates.

- Equipment may be located above or below this apparatus, but some equipment (like large amplifiers) may cause an unacceptable amount of hum or may generate too much heat and degrade the performance of this apparatus.



SIX YEAR WARRANTY

Important Safety Instructions

- 1) Read Instructions – All the safety and operation instructions should be read before the product is operated.
- 2) Retain Instructions – The safety and operating instructions should be retained for future reference.
- 3) Heed Warnings- All warnings on the product and in the operating instructions should be adhered to.
- 4) Follow Instructions – All operating and use instructions should be followed.
- 5) Cleaning – Unplug this product from the wall outlet before cleaning. Do not use liquid cleaners or aerosol cleaners. Use a damp cloth for cleaning.
Exception: A product that is meant for uninterrupted service and that for some specific reason, such as the possibility of the loss of an authorization code for the CATV converter, is not intended to be unplugged by the user for cleaning or any other purpose, may exclude the reference to unplugging the product in the cleaning description otherwise in above 5).
- 6) Attachments – Do not use attachments not recommended by the product manufacturer as they may cause hazards.
- 7) Water and Moisture – Do not use this product near water – for example, near a bath tub, wash bowl, kitchen sink, or laundry tub; in a wet basement; or near a swimming pool; and the like.
- 8) Accessories – Do not place this product on an unstable cart, stand, tripod, bracket, or table. The product may fall, causing serious injury to a child or adult, and serious damage to the product. Use only with a cart, stand, tripod, bracket, or table recommended by the manufacturer, or sold with the product. Any mounting of the product should follow the manufacturer's instructions, and should use a mounting accessory recommended by the manufacturer.
- 9) A product and cart combination should be moved with care. Quick stop, excessive force, and uneven surfaces may cause the product and cart combination to overturn.
- 10) Ventilation – Slots and openings in the cabinet are provided for ventilation and to ensure reliable operation of the product and to protect it from overheating, and these openings must not be blocked or covered. The openings should never be blocked by placing the product on a bed, sofa, rug, or other similar surface. This product should not be placed in a build-in installation such as a bookcase or rack unless proper ventilation is provided or the manufacturer's instructions have been adhered to.
- 11) Power Sources – This product should be operated only from the type of power source indicated on the marking label. If you are not sure of the type of power supply to your home, consult your product dealer or local power company. For products intended to operate from battery power, or other sources, refer to the operating instructions.
- 12) Grounding or Polarization – This product may be equipped with a polarized alternating-current line plug (a plug having one blade wider than the other). This plug will fit into the power outlet only one way. This is a safety feature. If you are unable to insert the plug fully into the outlet, try reversing the plug. If the plug should still fail to fit, contact your electrician to replace your obsolete outlet. Do not defeat the safety purpose of the polarized plug.
- 13) Power-Cord Protection – Power-supply cords should be routed so that they are not likely to be walked on or pinched by items placed upon or against them, paying particular attention to cords at plugs, convenience receptacles, and the point where they exit from the product.
- 14) Protective Attachment Plug – The product is equipped with an attachment plug having overload protection. This is a safety feature. See Instruction Manual for replacement or resetting of protective device. If replacement of the plug is required, be sure the service technician has used a replacement plug specified by the manufacturer that has the same overload protection as the original plug.
- 15) Outdoor Antenna Grounding – If an outside antenna or cable system is connected to the product, be sure the antenna or cable system is grounded so as to provide some protection against voltage surges and built-up static charges. Article 810 of the National Electrical Code, ANSI/NFPA 70, provides information with regard to proper grounding of the mast and supporting structure grounding of the lead in wire to an antenna discharge unit, size of grounding conductors, location of antenna-discharge unit, connection of grounding electrodes, and requirements for the grounding electrode. See Figure A.
- 16) Lightning – For added protection this product during lightning storm, or when it is left unattended and unused for long periods of time, unplug it from the wall outlet and disconnect the antenna or cable system. This will prevent damage to the product due to lightning and power-line surges.
- 17) Power Lines – An outside antenna system should not be located in the vicinity of overhead power lines or other electric light or power circuits, or where it can fall into such power lines or circuits. When installing an outside antenna system, extreme care should be taken to keep from touching such power lines or circuits as contact with them might be fatal.
- 18) Overloading – Do not overload wall outlets, extension cords, or integral convenience receptacles as this can result in a risk of fire or electric shock.
- 19) Object and Liquid Entry – Never push objects of any kind into this product through openings as they may touch dangerous voltage points or short-out parts that could result in a fire or electric shock. Never spill liquid of any kind on the product.
- 20) Servicing – Do not attempt to service this product yourself as opening or removing covers may expose you to dangerous voltage or other hazards. Refer all servicing to qualified service personnel.
- 21) Damage Requiring Service – Unplug this product from the wall outlet and refer servicing to qualified service personnel under the following conditions:
 - a. When the power-supply cord or plug is damaged.
 - b. If liquid has been spilled, or objects have fallen into the product.
 - c. If the product has been exposed to rain or water.
 - d. If the product does not operate normally by following the operating instructions. Adjust only those controls that are covered by the operating instructions as an improper adjustment of other controls may result in damage and will often require extensive work by a qualified technician to restore the product to its normal operation.
 - e. If the product has been dropped or damaged in any way.
 - f. When the product exhibits a distinct change in performance – this indicates a need for service.
- 22) Replacement Parts – When replacement parts are required, be sure the service technician has used replacement parts specified by the manufacturer or have the same characteristics as the original part. Unauthorized substitutions may result in fire, electric shock, or other hazards.
- 23) Safety Check – Upon completion of any service or repairs to this product, ask the service technician to perform safety checks to determine that the product is in proper operation condition.
- 24) Wall or Ceiling Mounting – The product should be mounted to a wall or ceiling only as recommended by the manufacturer.
- 25) Heat – The product should be situated away from heat sources such as radiators, heat registers, stoves, or other products (including amplifiers) that produce heat.



SIX YEAR WARRANTY

HAVING TROUBLE WITH YOUR SOUND SYSTEM?

CONDITION	POSSIBLE CAUSE
No Sound (<i>LED off</i>)	<ul style="list-style-type: none"> • turn POWER switch ON • charge batteries
No Sound (<i>LED on</i>)	<ul style="list-style-type: none"> • turn microphone switch ON • make sure all cables are completely plugged in
No Sound When Using CD Input	<ul style="list-style-type: none"> • check for output from source • make sure all cables are completely plugged in
Distorted Sound	<ul style="list-style-type: none"> • lower system/input volume control • replace or recharge batteries
Shortened Battery Life	<ul style="list-style-type: none"> • replace worn NiMH batteries • 'Cycle' NiMH batteries (<i>see page 5</i>)
Unit Turns Off & Back On During Use	<ul style="list-style-type: none"> • batteries are low and need to be replaced

HAVING TROUBLE WITH YOUR WIRELESS SYSTEM? (*Wireless Model Only*)

No Sound (<i>RX Indicator: ON</i>)	<ul style="list-style-type: none"> • microphone volume control is to low or off • no mic plugged into belt-pack transmitter
No Sound (<i>RX Indicator: OFF</i>)	<ul style="list-style-type: none"> • sound system not turned on • transmitter power switch turned off • low battery or no battery in transmitter • transmitter and receiver are not on the same channel

NEED MORE HELP? AN-Mini Setup & Operation Videos!
Visit Our Website: www.anchoraudio.com

AN-MINI TECHNICAL SPECIFICATIONS

Rated Power Output	30 watts	<i>RC-30 – Recharge Kit (optional)</i>	
Max SPL @ Rated Power	100 dB @ 1 meter	Battery Type	10 'AA' size, NiMH 2.5 AH
Frequency Response	100 Hz – 15 KHz +/- 3dB	Charger	AC-30
Speaker Type	4.5 inch neodymium woofer	AC-30 Input	120 VAC, 60Hz, 24 watts max
Battery Type	10 'AA' alkaline	AC-30/220 Input	220 VAC, 50Hz, 10 watts max
Dimensions (<i>HWD</i>)	5.5" x 5.5" x 6.5" (13.9 x 13.9 x 16.5 cm)	Shipping Weight	2.1 lbs / 1.0 Kg
Weight	2.5 lbs / 1.13 Kg		
Line Out	line level, 3.5 mm		
<i>Inputs</i>			
Line	line level, 3.5 mm		
Powered Microphone	Lo-Z phantom power, 3.5 mm jack		
Microphone	Lo-Z, 1/4" phone		



(Specifications Subject to Change Without Notice)

Anchor Audio Warranty

Anchor Audio only warranties products sold by authorized Anchor Audio dealers. Anchor Audio is unable to repair products that are out of warranty. Please visit the Anchor FAQ page at <http://www.anchoraudio.com/anchor-faq.html> for more information on battery replacement options.

To locate an authorized dealer near you, please contact sales@anchoraudio.com. Anchor Audio products are warranted to be free from defects in materials and workmanship for the period of SIX (6) YEARS from the date of original purchase unless listed below:

1. All microphone and beltpack transmitters shall be warranted for a TWO (2) YEAR period.
2. Batteries shall be warranted for a TWO (2) YEAR period.
3. PortaCom and ProLink 500 headsets and beltpacks shall be warranted for a TWO (2) YEAR period.
4. All woodworking shall be warranted for a TWO (2) YEAR period.
5. CouncilMAN and Assistive Listening Systems shall be warranted for a TWO (2) YEAR period.
6. All cases and covers shall be warranted for a TWO (2) YEAR period.

ANCHOR AUDIO CUSTOMER SERVICE
800.262.4671

FOR ADDITIONAL INFORMATION
visit www.anchoraudio.com