

# OWNER'S GUIDE

## M-CLASS MX8 STAGE MONITOR MX10 STAGE MONITOR



## EC STATEMENT OF CONFORMITY

This document confirms that the range of products of Community Professional Loudspeakers bearing the CE label meets all of the requirements in the EMC directive 89/336/EEC laid down by the Member States Council for adjustment of legal requirements. Furthermore, the products comply with the rules and regulations referring to the electromagnetic compatibility of devices from 30-August-1995.

The Community Professional Loudspeaker products bearing the CE label comply with the following harmonized or national standards: **DIN EN 55013:08-1991, DIN EN 55020:05-1995, DIN EN 55082-1:03-1993**

The authorized declaration and compatibility certification resides with the manufacturer and can be viewed upon request. The responsible manufacturer is the company:

**Community Light & Sound**  
**333 East Fifth Street**  
**Chester, PA 19013 USA**  
**TEL: 1-(610) 876-3400**  
**FAX: 1-(610) 874-0190**

Chester, PA USA March 2011

## TRANSFERABLE WARRANTY “(LIMITED)” VALID IN THE USA ONLY

The M-Class MX8 and MX10 loudspeaker systems are designed and backed by Community Professional Loudspeakers. For complete warranty information within the USA please refer to the **Warranty Card** enclosed with the product. Please call 610-876-3400 to locate your nearest Authorized Field Service Station.

For Factory Service call 610-876-3400. You must obtain a Return Authorization (R/A) number prior to the return of your product for factory service.

## WARRANTY INFORMATION AND SERVICE FOR COUNTRIES OTHER THAN THE USA

To obtain specific warranty information and available service locations for countries other than the United States of America, contact the authorized Community Distributor for your specific country or region.

### PACKING LIST

- (1) MX8 or MX10 Stage Monitor
- (1) Warranty Card
- (1) Owner's Guide

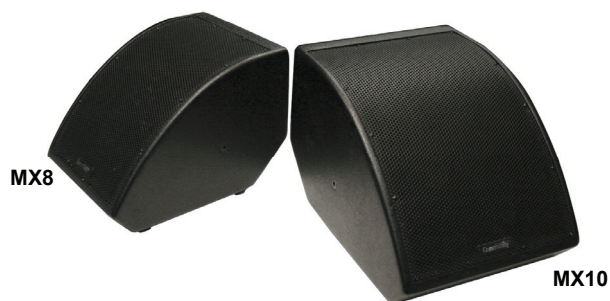
### SHIPPING DAMAGE

If the product is damaged during transit you must file a damage claim directly with the freight company. Be sure to save the carton and packing materials, as damage claims can be denied if these materials are not retained. If evidence of physical damage exists upon arrival, be cautious before signing a delivery acceptance receipt. Often, the fine print will waive your right to file a claim for damage or loss after you sign it. Make sure that the number of cartons shown on the freight documents have actually been delivered.

## FIND THE LATEST ONLINE

Community is always available at <http://www.communitypro.com>  
for the latest version of this manual and the most recent product information.

## PRODUCT DESCRIPTION



The M-Class MX8 and MX10 stage monitors are designed to be affordable, yet highly effective for a wide range of demanding applications such as houses of worship, scholastic and corporate auditoriums, nightclubs, and numerous other venues that require clarity of speech, musicality, and high power output. The MX8 and MX10 feature a low profile design that does not visually dominate the stage. Both models utilize advanced co-axial drivers to provide true point-source acoustical output—a highly desirable characteristic for loudspeakers that are used in close proximity to microphones.

The LF and HF sections utilize separate magnetic structures for maximum efficiency and freedom from intermodulation distortion. The low frequency cones employ Community's patented Carbon Ring Cone Technology™ which increases the effective area of the cone, while mechanically reinforcing the critical juncture between the cone and the surround for greater durability and longer life span.

The MX8 and MX10 feature exceptionally high sensitivity, permitting the use of smaller power amplifiers to obtain very high output levels. Precision engineered internal crossovers eliminate the need for bi-amplification, further reducing the overall system cost. Characterized by a smooth, flat frequency response coupled with low distortion, both models provide exceptional resistance to feedback. The Tru-Phase™ high frequency waveguide affords precision pattern control to avoid acoustic hot-spots on the stage, thereby greatly simplifying the task of the personnel who mix monitors. Community's Uniform Voicing Technology ensures that the two models are virtually interchangeable with one another, though greater acoustic output and extended low frequency reproduction can be expected from the larger MX10.



*Rear image showing input panel and Ergo-Grip™ handle.*



Compact, lightweight, attractive, and durable, the MX8 and MX10 are exceptional stage monitors available in black or white finishes. A single rear Ergo-Grip handle offers convenience for portable applications.

Optional yoke mounting brackets for flush mounting an MX8 or MX10 monitor tightly against a wall or ceiling are sold separately (part no. MX-Y8 and MX-Y10). Corner mounting is also possible when the yoke is mounted vertically and the loudspeaker horizontally with the bottom and rear of the enclosure against adjacent walls, further aided by the convenient location of the input panel on the bottom rear of the loudspeaker enclosure. The brackets are also available in black or white finishes to match the loudspeaker color.



The M-Class MX8 and MX10 stage monitors are the perfect complement to any of Community's Front of House systems including the ENTASYS column line-array, powerful iBOX and Solutions product lines, and the versatile VERIS Series.

**MX8/MX10 LOUDSPEAKER SPECIFICATIONS\***

<b>MODEL</b>	<b>MX8</b>	<b>MX10</b>
<b>Loudspeaker Type:</b>	Two-way, full-range 8-inch coaxial floor monitor, passive crossover	Two-way, full-range 10-inch coaxial floor monitor, passive crossover
<b>Operating Range:</b>	80 Hz to 18 kHz 90 Hz to 16 kHz (+/-3dB)	70 Hz to 18 kHz 90 Hz to 16 kHz (+/-4dB)
<b>Max Input Ratings:</b>	150W continuous / 375W program	200W continuous / 500W program
<b>Sensitivity 1W/1m:</b>	96.4 dB SPL (125 Hz to 12.5 kHz, 1/3 octave)	99 dB SPL (125 Hz to 12.5 kHz, 1/3 octave)
<b>Maximum Output:</b>	117 dB SPL	122 dB SPL
<b>Nominal Impedance:</b>	8 ohms	8 ohms
<b>Nominal -6dB Beamwidth:</b>	115° Conical	100° Conical
<b>Input Connection:</b>	(2) Paralleled Neutrik™ NL4MP (pins 1+ & 1-) internally looped to (1) two terminal barrier strip	(2) Paralleled Neutrik™ NL4MP (pins 1+ & 1-) internally looped to (1) two terminal barrier strip
<b>Handles:</b>	(1) Ergo-Grip™ rear pocket handle	(1) Ergo-Grip™ rear pocket handle
<b>Required Accessory:</b>	24 dB/Octave 100 Hz high pass filter	24dB/Octave 90 Hz high pass filter
<b>Optional Accessory:</b>	MX-Y8 Yoke mounting wall bracket	MX-Y10 Yoke mounting wall bracket
<b>Dimensions—Height:</b>	10.4 inches (263 mm)	10.8 inches (275 mm)
<b>Width (front):</b>	10.8 inches (275 mm)	12.6 inches (321 mm)
<b>Depth:</b>	14.5 inches (367 mm)	16.5 inches (419 mm)
<b>Weight:</b>	17 lbs (8 kg)	22 lbs (10 kg)
<b>Shipping Weight:</b>	23 lbs (11 kg)	29 lbs (14 kg)

\*Community strives to improve its products on a continual basis. Specifications may therefore be subject to change without notice.

**IMPORTANT SAFETY INFORMATION**

-  Modern professional power amplifiers are capable of delivering lethal voltages. Installation and service personnel must be cautious to ensure that all amplifiers are disconnected from the AC Mains supply whenever such personnel might potentially come in contact with un-insulated wiring.
-  When installing the bracket and loudspeaker, or otherwise suspending the loudspeaker by any other means, it is essential to adhere to safe rigging and construction practices. Installation of loudspeakers should only be performed by trained and qualified personnel and it is strongly recommended that a licensed and certified professional structural engineer approve the mounting design.



Community Professional Loudspeakers  
333 East Fifth Street  
Chester, PA 19013-4511 USA  
TEL: 1-(610) 876-3400 FAX: 1-(610) 874-0190  
www.communitypro.com

© 2011 All Rights Reserved

31March2011