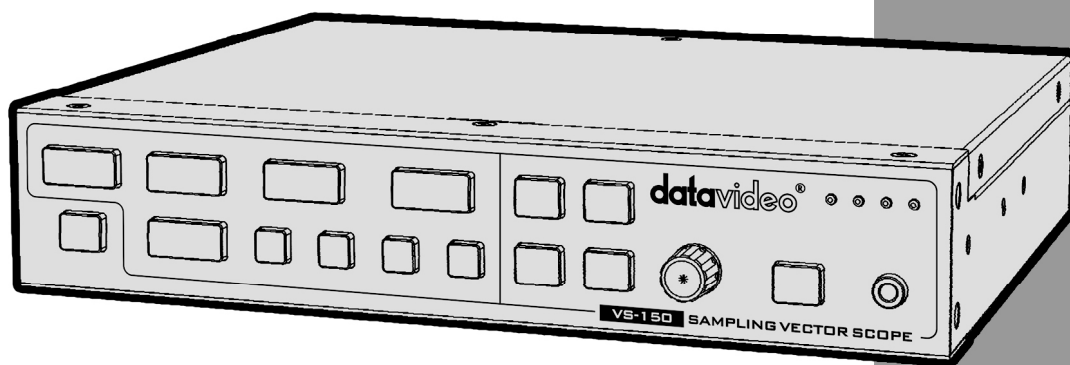


datavideo®



**SAMPLING VECTOR
SCOPE
VS-150**

Instruction manual

Contents

Warranty	3
Disposal.....	3
Packing List.....	3
Connections & Controls	4
Front & Rear Panels	4
VS-150 Output Display	7
Menu Control and Options	8
VS-150 Quick Start Guide.....	10
VS-150 Advanced Application.....	13
Supported SDI / HD-SDI Input Video Formats	14
Application Diagram.....	15
Specifications.....	15
Service and Support	16

Warranty

Standard Warranty

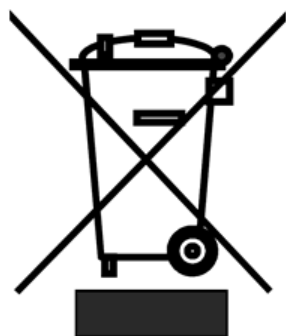
- Datavideo equipment is guaranteed against any manufacturing defects for one year from the date of purchase.
- The original purchase invoice or other documentary evidence should be supplied at the time of any request for repair under warranty.
- Damage caused by accident, misuse, unauthorized repairs, sand, grit or water is not covered by this warranty.
- All mail or transportation costs including insurance are at the expense of the owner.
- All other claims of any nature are not covered.
- Cables & batteries are not covered under warranty.
- Warranty only valid within the country or region of purchase.
- Your statutory rights are not affected.

Two Year Warranty

- All Datavideo products purchased after 01-Oct.-2008 qualify for a free one year extension to the standard Warranty, providing the product is registered with Datavideo within 30 days of purchase. For information on how to register please visit www.datavideo-tek.com or contact your local Datavideo office or authorized Distributors
- Certain parts with limited lifetime expectancy such as LCD Panels, DVD Drives, Hard Drives are only covered for the first 10,000 hours, or 1 year (whichever comes first).

Any second year warranty claims must be made to your local Datavideo office or one of its authorized Distributors before the extended warranty expires.

Disposal



For EU Customers only - WEEE Marking

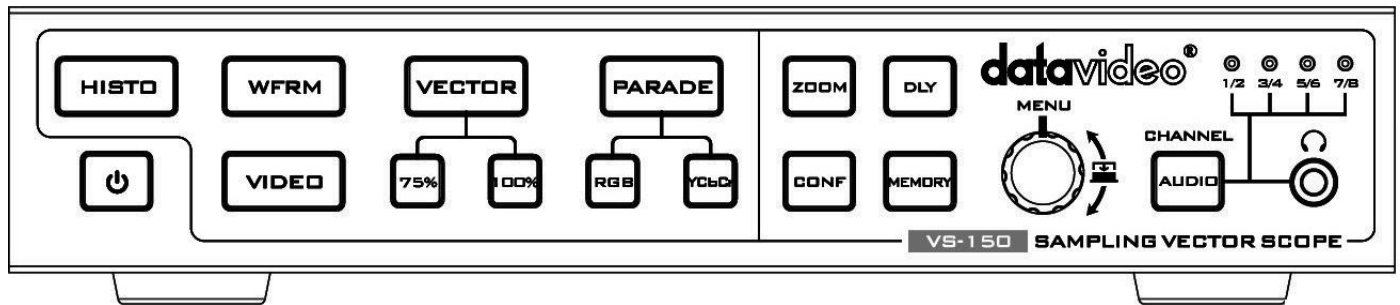
This symbol on the product indicates that it will not be treated as household waste. It must be handed over to the applicable take back scheme for the recycling of electrical and electronic equipment. For more detailed information about the recycling of this product, please contact your local Datavideo office.

Packing List

- | | | |
|---|---|---------------------|
| 1 | x | AD Switch 12V 500mA |
| 1 | x | VS-150 QSG |
| 1 | x | Instruction Manual |

Connections & Controls

Front & Rear Panels



POWER SWITCH

Switches the power On / Off.



HISTOGRAM

HISTOGRAM is used to detect the overall brightness of a location. Through VS-150 to detect light sources from all directions reading by the camera, one can individually adjust each camera to the desired state.



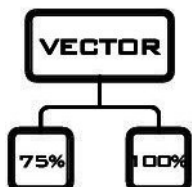
WAVEFORM MONITOR

Waveform monitor is used as a reference to adjust the brightness of a camera. One can accompany grayscale chart to better distinguish the color level of the adjusting camera.



VIDEO DISPLAY

Display the SDI Input video source.



VECTOR

Applied a 75% or 100% color bar signal.



PARADE CALIBRATION

Parade calibration on RGB or YCbCr mode.

Aim the camera to take the entire test chart as a sample image. This step is necessary to make sure that the color saturation of an image reproduced from the camera is consistent and does not tint to any particular color that can cause color cast.



X ZOOM

To adjust the brightness of an area in detail, one can monitor a selected spot by choosing display graph from 20%~100%.



CONFIGURATION

576i THUMBAIL

Set the display monitor at the lower left hand corner to 16:9 or 4:3 when the signal is 576i.

SDI LOOPTHROUGH

Set loop through on / off mode

CAPTURE

Set sampling mode FRAME: Capture the entire frame as a sample.

FIELD1: Capture FIELD 1 as a sample only.

FIELD2: Capture FIELD 2 as a sample only.

FIRMWARE REVISION

Display current software version



X DELA

This is used by adjusting the position of the matrix.

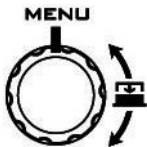
Set delay time from 0 ~ 17.0235uS



TRACE MEMORY

This mode is allowed you save trace, recall trace or clear trace.

To recall the saved camera signals, the camera signals are consistent when camera signals (displaying in various colors) are overlapping with the one another.

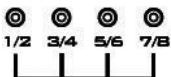


MENU

Menu dial and push to select button

Turn the knob to select the options or adjust the parameter.

Push the knob to select the options.



AUDIO CHANNEL

Setting & display the audio channels 1,2 / 3,4 / 5,6 or 7,8 CH.

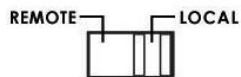
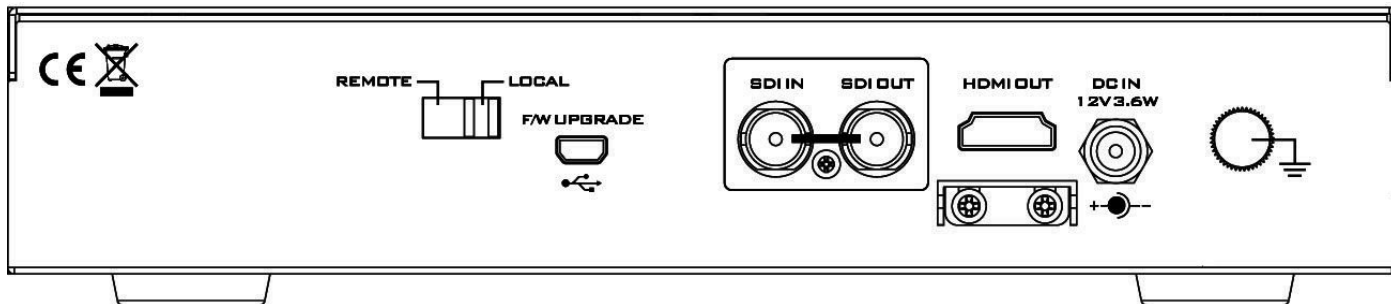


Push the  button, and then turn the MENU knob  to select audio channels.



STEREO MINI JACK PLUG

3.5mm jack socket for audio monitoring



REMOTE:

When switched to REMOTE, the front panel controls are active on the VS-150.

LOCAL:

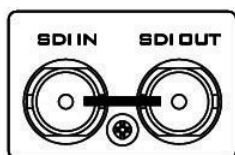
When switched to LOCAL, the USB port can be connected to a laptop in order to update the firmware.

F/W UPGRADE



Mini USB

USB interface for firmware update



HD/SD-SDI INPUT

BNC connector for SDI input.

HD/SD-SDI OUTPUT

BNC connector for SDI output.

HDMI OUT



HDMI OUTPUT

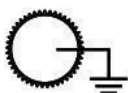
HDMI digital signal output connector.

DC IN
12V 3.6W



DC in socket

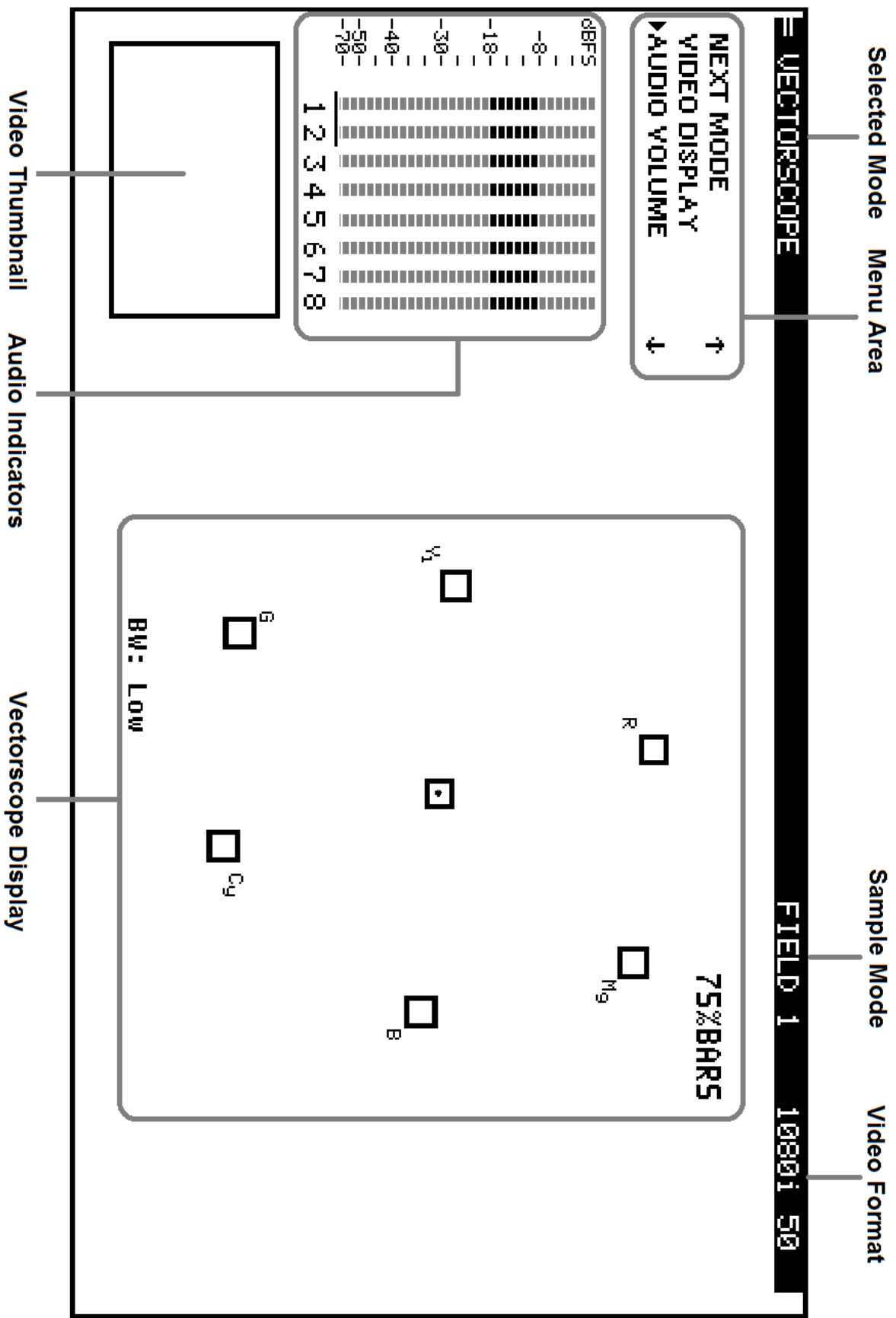
Connect the supplied 12V PSU to this socket. The connection can be secured by screwing the outer fastening ring of the DC In plug to the socket.



Grounding Terminal

When connecting this unit to any other component, make sure that it is properly grounded by connecting this terminal to an appropriate point. When connecting, use the socket and be sure to use wire with a cross-sectional area of at least 1.0 mm²

VS-150 Output Display



Menu Control and Options

The VS-150 is a menu driven unit. The menu is viewed as part of the output display when it has been connected to a HDMI / SDI monitor.

The menu options are scrolled by turning the Menu Dial to the left or right (See item 1 on page 8). A pointer (►) to the left of the menu options indicates which item is currently selected. To change / select a value gently press the Menu Dial in towards the VS-150 case, like a button.

If there are more options in the current menu then an arrow up or down may be displayed to the right of the Menu Area. To go back to an earlier menu select EXIT from the current options list.

The Main Menu options are:

TOOLS
NEXT MODE
VIDEO DISPLAY
AUDIO VOLUME
AUDIO CHANNEL
CONFIGURATION

NEXT MODE

When first switched on the VS-150 will display in the Vectorscope mode. Selecting NEXT MODE and pressing in the Menu Dial will cause the unit to display the next mode in the following order.

VECTORSCOPE
PARADE
WAVEFORM MONITOR
HISTOGRAM

NOTE: All scope views are displayed at 1280 x 720 regardless of input video format.

VIDEO DISPLAY

When this option is selected the VS-150 will display only the incoming video. All audio and video scope views will be hidden when this option is active. This option affects both the SDI loop through and the HDMI output. To return to a scope view once more press in or rotate the Menu Dial on the VS-150.

TOOLS

The TOOLS option is only available with certain VS-150 output displays. These are VECTORSCOPE, PARADE and WAVEFORM MONITOR.

VECTORSCOPE related TOOLS: **TRACE MEMORY**
 SET BANDWIDTH
 SET UP BARS

PARADE related TOOLS: **TRACE MEMORY**
 SET RGB / YCbCr

WAVEFORM related TOOLS: **TRACE MEMORY**
 X ZOOM
 X DELAY

TRACE MEMORY

This option allows the current VS-150 scope trace to be saved, recalled or cleared within the unit's memory. A saved or recalled trace will be displayed in green sample points and the live or current signals will be displayed in white sample points. Where the saved and current traces match sample points are displayed in blue. In this way two sources can be compared or a single source can be checked to see if its output drifts during extended use.

SET BANDWIDTH (VECTORSCOPE TOOLS)

This option can be changed between LOW or FULL bandwidth. The LOW bandwidth option results in fewer sample points being displayed but still allows a good read of the incoming signals. The FULL bandwidth option results in all sample points being displayed.

SET UP BARS (VECTORSCOPE TOOLS)

This option allows the Vectorscope Graticule targets for each colour to be switched between the 75% and 100% colour bar positions. For most TV broadcast situations the Graticule targets should be set for 75% bars.

SET RGB / YCbCr (PARADE TOOLS)

This setting allows the parade displayed to be switched between RGB and component YCbCr values.

X ZOOM (WAVEFORM TOOLS)

This option allows the waveform display to be zoomed on the X Axis so a specific area can be examined in more detail. X ZOOM options are:

100% = The whole width of the waveform is displayed (normal view).

60% = Only 60% of the whole waveform is shown on the display. In this setting X DELAY can be used to scroll left and right across the waveform.

In this way the rest of the waveform can be viewed at the same level of detail.

40% = Only 40% of the whole waveform is shown on the display. In this setting X DELAY can be used to scroll left and right across the waveform. In this way the rest of the waveform can be viewed at the same level of detail.

20% = Only 20% of the whole waveform is shown on the display. In this setting X DELAY can be used to scroll left and right across the waveform. In this way the rest of the waveform can be viewed at the same level of detail.

X DELAY (WAVEFORM TOOLS)

This feature allows the waveform display to be panned right or left at the chosen level of X ZOOM detail. A low delay value relates to the left hand side of the vision raster and a high delay value relates to the right hand side of the vision raster.

AUDIO VOLUME

Audio embedded into the SDI / HD-SDI signal can be monitored by plugging headphones into the 3.5mm jack socket on the VS-150 front panel. Using the AUDIO VOLUME option, the Menu Dial can be used to increase or reduce the volume at the connected headphones, so it is monitored at a comfortable level.

AUDIO CHANNEL

The first 8 audio channels embedded into an SDI / HD-SDI signal can be monitored by the VS-150. Using the AUDIO CHANNEL option allows selected stereo pairs to be chosen for monitoring with the headset socket. The chosen pair is underlined on the VS-150 output display also.

CONFIGURATION

This option in the VS-150 Main Menu allows set up of Video Thumbnail, SDI loopthrough, Capture setting and confirmation of the VS-150 firmware revision.

VIDEO THUMBNAIL

Allows the option to switch the video thumbnail on the scope display between 4x3 (4:3) or 16x9 (16:9) aspect ratio when working with Standard Definition inputs. A HD input should be viewed in its native 16x9 aspect ratio.

SDI LOOPTHROUGH

Allows the SDI output of the VS-150 to be used as:

ON = A clean video loop through – SD or HD

OFF = A secondary scope output – HD-SDI 1280x720

OFF is the default option at power on

NOTE: This setting can be over-ridden by the **VIDEO DISPLAY** setting in the VS-150 main menu.

CAPTURE

The VS-150 scope displays can be set to sample **FIELD1**, **FIELD2** or **FRAME** depending on the users requirement. This choice is confirmed in the top right hand corner of the current scope display.

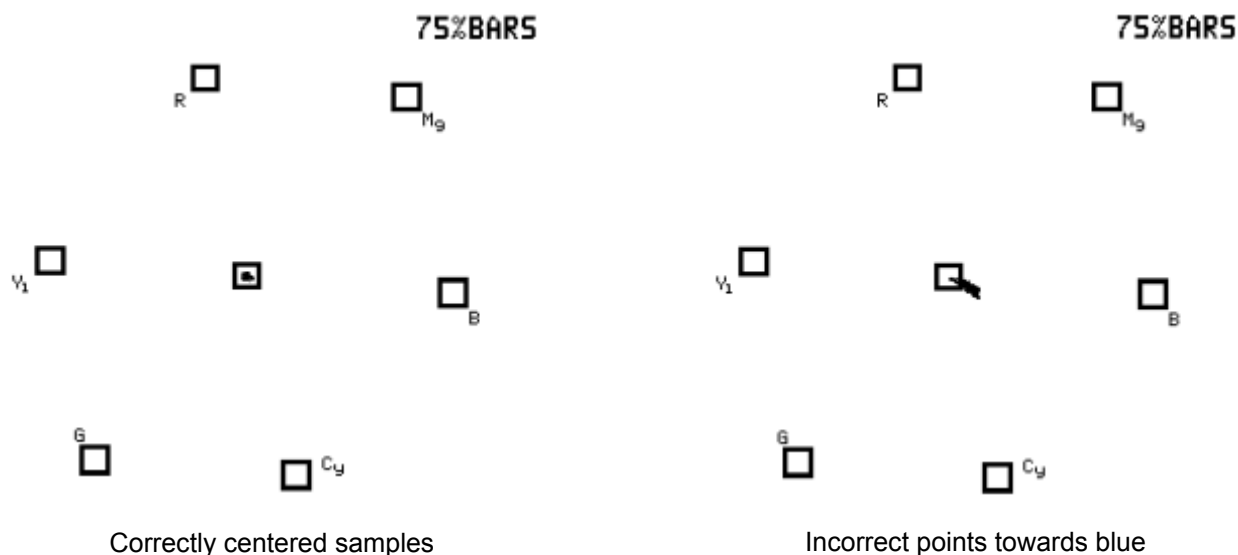
DSC labs camera alignment tools

Camera alignment tools such as DSC labs' *Cam Align Books* and *Chroma Du Monde* can help speed up the camera alignment process by introducing known calibrated constants into the sampled video that should produce a standard VS-150 Waveform, Parade or Vectorscope pattern. The live lighting and camera settings can then be adjusted to produce a VS-150 pattern that matches a calibrated pattern.

VS-150 Quick Start Guide

Black and White Balance Adjustment (VECTORSCOPE)

1. Aim the camera at a solid white background or white reference card.
2. Turn on any set lights and ensure any coloured filters are removed. We want an evenly lit white reference card or background with only true white light.
3. Select VECTORSCOPE mode on the VS-150 using the NEXT MODE option.
4. Use the camera's auto white balance feature to white balance against the solid white background or reference white card.
5. If necessary adjust R (Red) or B (Blue) GAIN of the camera to move the shown sample points for white video into the center graticule box of the VS-150 Vectorscope.



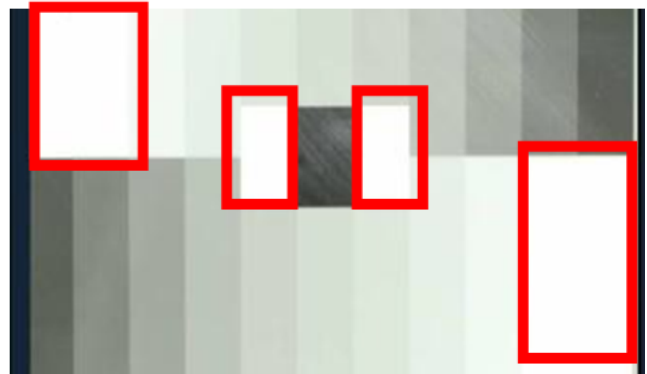
6. Once white balancing is complete cap the camera lens to produce black video. The sample points should only appear in the same center graticule box of the VS-150 Vectorscope.
7. If necessary adjust R (Red) or B (Blue) GAIN of the camera to move the shown sample points for black video into the center graticule box of the VS-150 Vectorscope.
8. Remove the lens cap and continue to Luminance Adjustment.

Luminance Adjustment (HISTOGRAM)

1. Under the same on set lighting conditions aim the camera back to the white background or ideally a grayscale reference chart which includes 100% white and absolute black.
2. Select HISTOGRAM mode on the VS-150 using the NEXT MODE option.
3. Adjust the camera's IRIS and Neutral Density Filter to reach the desired maximum white level state. If the camera has a Zebra function you can use this to identify areas of under or over exposure too.
4. If aiming at a precise grayscale chart, the VS-150 histogram output may resemble evenly spaced vertical sample bars in line with the grayscale chart. However, if the pattern is distributed towards the right (100), it can mean the camera is over exposed. If the pattern is distributed towards the left (0), it can mean the camera is under exposed.
5. If there are readings below zero the black levels will be crushed or too black. Use the master pedestal setting on the camera to set the lowest black level at or slightly above 0.
6. Once the first camera is correctly calibrated select TOOLS> TRACE MEMORY> SAVE TRACE to save the calibrated matrix levels from the first camera.
7. Now connect VS-150 to the second camera on the set. Adjust the white and black balance on the next camera as described earlier.
8. Now adjust the grayscale reading from second camera output so that it matches the saved output from first camera to align the cameras. The same procedure can be repeated for any remaining cameras.

Luminance Adjustment (WAVEFORM MONITOR)

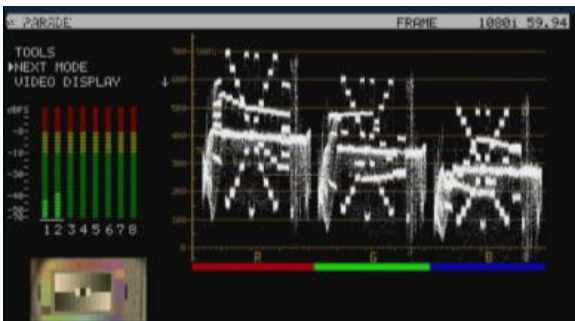
1. Under the same on set lighting conditions aim the camera back to the white background or ideally a grayscale reference chart.
2. Select WAVEFORM mode on the VS-150 using the NEXT MODE option.
3. Adjust the camera's IRIS and matrix to reach the desired maximum white level state. There may be a pre-selected level, such as 600mv as a standard for consistency in brightness.
4. If aiming at a precise grayscale chart, the VS-150 waveform output may resemble an X shaped matrix. The steps in this matrix should be evenly distributed in line with the grayscale chart. However, if the matrix is not evenly distributed, it means that the Gamma is not correctly set, and will lead to further adjustment of the camera.
5. Once the first camera is correctly calibrated select TOOLS> TRACE MEMORY> SAVE TRACE to save the calibrated matrix levels from the first camera.
6. Now connect VS-150 to the second camera on the set. Adjust the white and black balance on the next camera as described earlier.
7. Now adjust the grayscale matrix reading from second camera output so that it matches the saved matrix from first camera to align the cameras. The same procedure can be repeated for any remaining cameras.



The grayscale matrix image above is not evenly stepped and shows there are four over-exposed white areas

Colour /Hue Adjustment (PARADE RGB / YCbCr)

1. Under the same on set lighting conditions aim the camera at a colour reference chart (such as DSC labs' Chroma Du Monde).
2. Adjust the colour level of the camera to give its image the required warmer or colder look according to your preference.
3. Select PARADE mode (RGB or YCbCr) on the VS-150 using the NEXT MODE option.
4. PARADE displays the characteristic colour levels on a scale. If the camera is pointed at the Chroma Du Monde reference chart, the operator can now set the camera to standardised colour levels such as R:650mv G:600mv B:600mv. These adopted set reference points can then ensure image consistency in future production runs and any post production grading.
5. Once the first camera is correctly set for colour select TOOLS> TRACE MEMORY> SAVE TRACE to save the current parade trace from the first camera.
6. Now connect VS-150 to the second camera on the set. Adjust the white, black balance and luminance on the next camera as described earlier.
7. Now adjust the colour on the second camera output so that it matches the saved Parade from the first camera. The same procedure can be repeated for any remaining cameras.



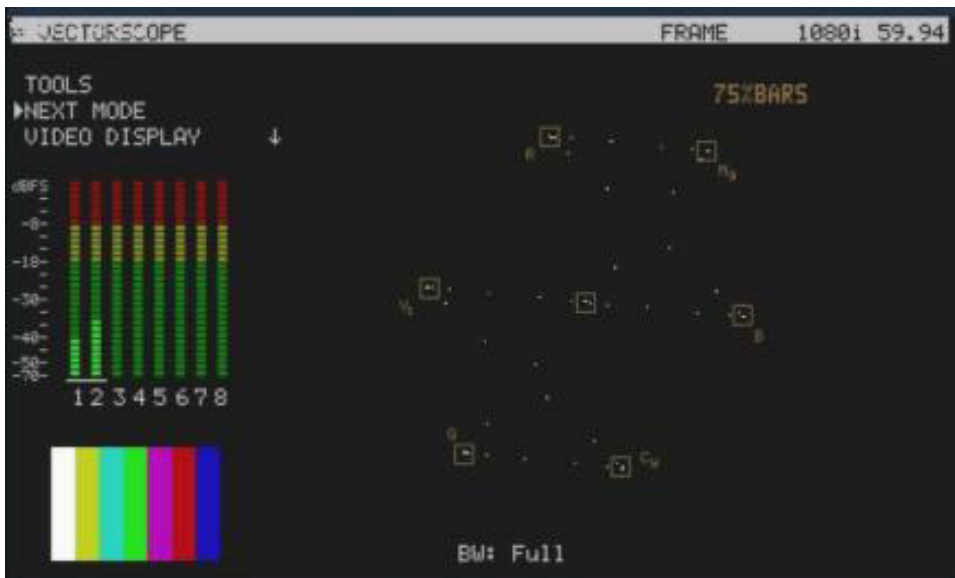
Set your own standard (The colour of the image above is leaning toward red)

Camera output after adjustments (VECTORSCOPE)

1. Under the same on set lighting conditions aim the camera at a colour reference chart (such as DSC labs' Chroma Du Monde).
2. Select VECTORSCOPE mode on the VS-150 using the NEXT MODE option.
3. Now, the VECTORSCOPE displays the analyzed colour components. If the white balance of one camera had been altered, the VECTORSCOPE matrix can be used as a check point to ensure all cameras have been correctly aligned.



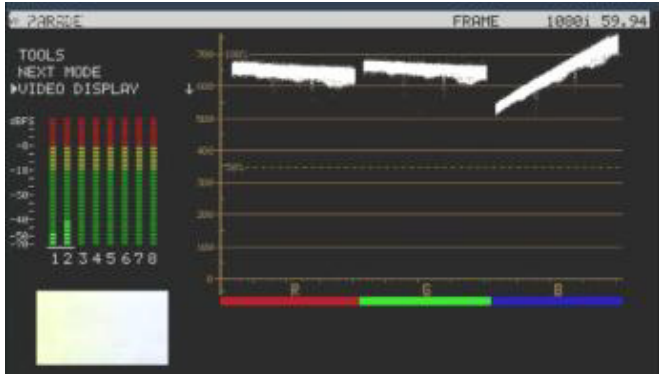
4. Feeding camera output of 75% colour bars into a Video Switcher confirms if the colour image is correct after the switcher too.



VS-150 Advanced Application

RGB PARADE and White Balance Adjustment

- Select PARADE mode on the VS-150 using the NEXT MODE option. Then point the camera at the white background or white reference card.
- When the white balance is correctly adjusted, The RGB traces should be flat, balanced, and parallel to one another in a straight line.
- When White balance is not correctly adjusted, the PARADE will show unbalanced trace.
- When the lighting is not evenly spread-out, the PARADE will show traces which deviate from the straight line.
- If one of the RGB trace has one end higher than another, it means that the colour has lost its fidelity.



This undesired situation will occur if the camera is not adjusted correctly or you have an uneven colour temperature/ lighting on the background during white balancing.

Camera Noise

- Adjust the IRIS of the camera to minimum or cap the lens.
- Select PARADE mode on the VS-150 using the NEXT MODE option.
- The noise value will be displayed on the chart. The thicker the value on the line chart, the greater the noise level. The thinner the trace on the chart, the less the noisy it is



Comparing colour saturation among cameras

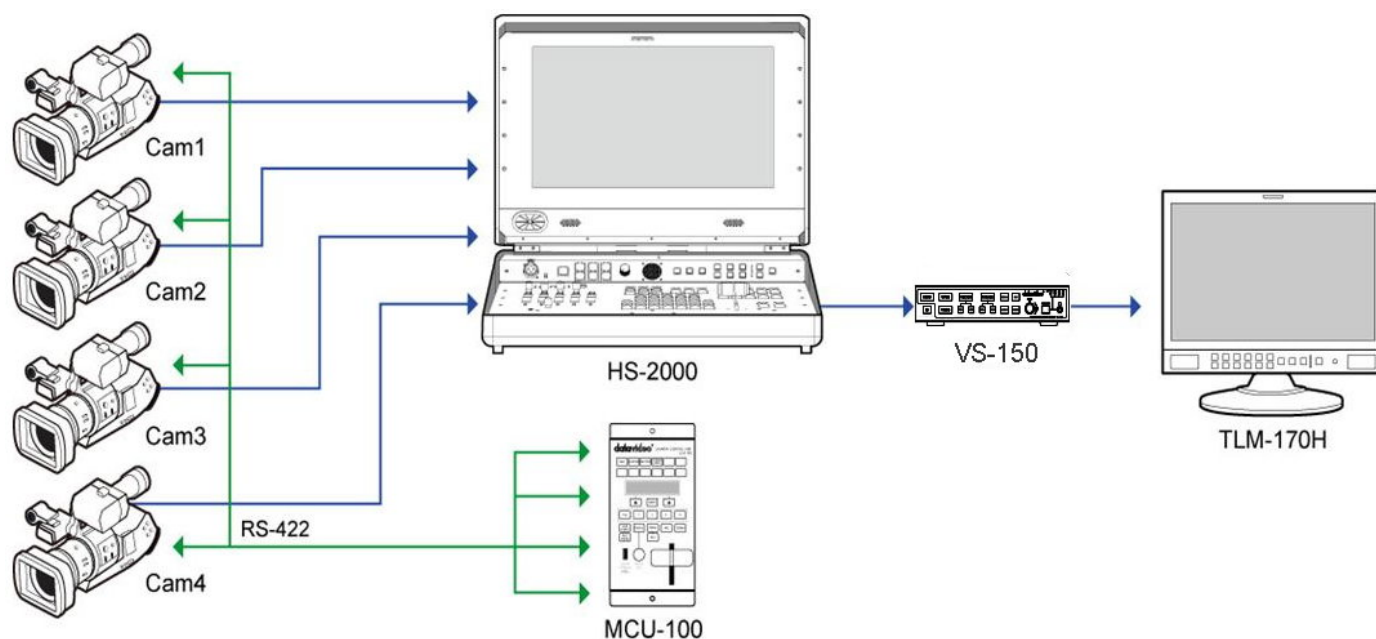
- i. Aiming the camera at Chroma Du Monde (Set camera to AUTO).
- ii. Select VECTORSCOPE mode on the VS-150 using the NEXT MODE option.
- iii. The VECTORSCOPE matrix displaying on VS-150 represents the colour components from the camera.
- iv. Use the SAVE TRACE feature under TOOLS to compare the colour components between cameras.
- v. The matrix indicates the current colour components of the camera by showing the positioning of the dots. When two cameras have aligned luminance, the larger the VECTORSCOPE matrix, the more colour saturation it represents.



Supported SDI / HD-SDI Input Video Formats

- 720 x 576i / 50 Hz (PAL)
- 720 x 480i / 60 Hz (NTSC)
- 1280 x 720P / 29.97Hz
- 1280 x 720p / 50 Hz
- 1280 x 720p / 60 Hz
- 1920 x 1080i / 50 Hz
- 1920 x 1080i / 59.94 Hz
- 1920 x 1080i / 60 Hz
- 1920 x 1080P / 24Hz
- 1920 x 1080P / 25 Hz
- 1920 x 1080P / 30 Hz

Application Diagram



Specifications

Interface	1x SDI/HD-SDI input (HD-SDI SMPTE 292M 1.5Gbps, SD-SDI SMPTE 259M-C 270Mbps with Embedded Audio) 1x SDI/HD-SDI Loop through output 1x HDMI Output
HD/SD-SDI Spec	SMPTE 259M-C (270Mbps - 525/625 Component Video) and SMPTE 292M (1.485/1.001 Gbps) Connector BNC (IEC 169-8) Impedance 75 Ω Return Loss HD > 10 dB (1.5 GHz) SD > 15 dB (270 MHz) Equalization 200 m Belden 8281 cable at 270 Mbps; 100 m (typical) of Belden 1694A at 1.485 Gbps
HDMI	Supports HDMI v1.1
Operating Temperature	0°C to 50°C (32°F to 102°F)
Humidity	10% to 90% (non condensing)
Dimensions	220mm (W) x 47mm (H) x 221.3mm (D)
Weight	Gross, packed = 2.2 Kg
Power	DC 12V / 0.5A (3.6W)

Service & Support

It is our goal to make your products ownership a satisfying experience. Our supporting staff is available to assist you in setting up and operating your system. Please refer to our web site www.datavideo.com for answers to common questions, support requests or contact your local office below.

Datavideo USA

Datavideo Corporation
7048 Elmer Avenue.
Whittier, CA 90602,
U.S.A.
Tel: +1-562-696 2324
Fax: +1-562-698 6930
E-mail: sales@datavideo.us

Datavideo The Netherland

Datavideo Technologies Europe BV
Floridadreef 106
3565 AM Utrecht,
The Netherlands
Tel: +31-30-261-96-56
Fax: +31-30-261-96-57
E-mail: info@datavideo.nl

Datavideo United Kingdom

Datavideo UK Limited
Units 1 & 2 Waterside Business Park
Hadfield, Glossop, Derbyshire
SK13 1BE, UK
Tel: +44-1457 851 000
Fax: +44-1457 850 964
E-mail: sales@datavideo.co.uk

Datavideo Taiwan

Datavideo Technologies Co. Ltd
10F. No. 176, Jian 1st Rd., Chung Ho
District, New Taipei City 235, Taiwan,
R.O.C.
Tel: +886-2-8227-2888
Fax: +886-2-8227-2777
E-mail: service@datavideo.com.tw

Datavideo China

Datavideo Technologies China Co
101, NO.618, LiuYing Rd, Zhabei District,
Shanghai, China
Tel: +86 21-5603 6599
Fax: +86 21-5603 6770
E-mail: service@datavideo.cn

Datavideo Singapore

Datavideo Technologies (S) PTE Ltd
No. 178 Paya Lebar Road #06-03
Singapore 409030
Tel: +65-6749 6866
Fax: +65-6749 3266
E-mail: sales@datavideo.sg

Datavideo Hong Kong

Datavideo Hong Kong Ltd
G/F., 26 Cross Lane
Wanchai, Hong Kong
Tel: +852-2833-1981
Fax: +852-2833-9916
E-mail: info@datavideo.com.hk

Datavideo France

Datavideo France s.a.r.l
Cité Descartes 1, rue Albert Einstein
Champs sur Marne
774477-Marne la Vallée cedex 2
Tel: +33-1-60370246
E-mail: info@datavideo.fr

Datavideo India

Datavideo Technologies India Pvt Ltd
A-132, Sec-63, Noida-201307,
Uttar Pradesh (UP), India.
Tel: +91-0120-2427337
Fax: +91-0120-2427338
E-mail: sales@datavideo.in



Please refer to our website for update the latest version manual.
www.datavideo.info/Test+Equipment/VS-150

datavideo®
www.datavideo.com