

1:3 | Splitter for HDMI 1.3

EXT-HDMI1.3-143

User Manual

Release B5



Important Safety Instructions

1. Read these instructions.
2. Keep these instructions.
3. Heed all warnings.
4. Follow all instructions.
5. Do not use this product near water.
6. Clean only with a dry cloth.
7. Do not block any ventilation openings. Install in accordance with the manufacturer's instructions.
8. Do not install or place this product near any heat sources such as radiators, heat registers, stoves, or other apparatus (including amplifiers) that produce heat.
9. Do not defeat the safety purpose of the polarized or grounding-type plug. A polarized plug has two blades with one wider than the other. A grounding type plug has two blades and a third grounding prong. The wide blade or the third prong are provided for your safety. If the provided plug does not fit into your outlet, consult an electrician for replacement of the obsolete outlet.
10. Protect the power cord from being walked on or pinched particularly at plugs, convenience receptacles, and the point where they exit from the apparatus.
11. Only use attachments/accessories specified by the manufacturer.
12. To reduce the risk of electric shock and/or damage to this product, never handle or touch this unit or power cord if your hands are wet or damp. Do not expose this product to rain or moisture.
13. Unplug this apparatus during lightning storms or when unused for long periods of time.
14. Refer all servicing to qualified service personnel. Servicing is required when the apparatus has been damaged in any way, such as power-supply cord or plug is damaged, liquid has been spilled or objects have fallen into the apparatus, the apparatus has been exposed to rain or moisture, does not operate normally, or has been dropped.
15. Batteries that may be included with this product and/or accessories should never be exposed to open flame or excessive heat. Always dispose of used batteries according to the instructions.

Warranty Information

Gefen warrants the equipment it manufactures to be free from defects in material and workmanship.

If equipment fails because of such defects and Gefen is notified within two (2) years from the date of shipment, Gefen will, at its option, repair or replace the equipment, provided that the equipment has not been subjected to mechanical, electrical, or other abuse or modifications. Equipment that fails under conditions other than those covered will be repaired at the current price of parts and labor in effect at the time of repair. Such repairs are warranted for ninety (90) days from the day of reshipment to the Buyer.

This warranty is in lieu of all other warranties expressed or implied, including without limitation, any implied warranty or merchantability or fitness for any particular purpose, all of which are expressly disclaimed.

1. Proof of sale may be required in order to claim warranty.
2. Customers outside the US are responsible for shipping charges to and from Gefen.
3. Copper cables are limited to a 30 day warranty and cables must be in their original condition.

The information in this manual has been carefully checked and is believed to be accurate. However, Gefen assumes no responsibility for any inaccuracies that may be contained in this manual. In no event will Gefen be liable for direct, indirect, special, incidental, or consequential damages resulting from any defect or omission in this manual, even if advised of the possibility of such damages. The technical information contained herein regarding the features and specifications is subject to change without notice.

For the latest warranty coverage information, refer to the Warranty and Return Policy under the Support section of the Gefen Web site at www.gefen.com.

PRODUCT REGISTRATION

Please register your product online by visiting the Register Product page under the Support section of the Gefen Web site.

Contacting Gefen Technical Support

Gefen, LLC
c/o Customer Service
20600 Nordhoff St.
Chatsworth, CA 91311

Telephone: (818) 772-9100
(800) 545-6900

Fax: (818) 772-9120

Email: support@gefen.com

Visit us on the Web: www.gefen.com

Technical Support Hours: 8:00 AM to 5:00 PM Monday - Friday, Pacific Time

1:3 Splitter for HDMI 1.3 is a trademark of Gefen, LLC.

Important Notice

Gefen, LLC reserves the right to make changes in the hardware, packaging, and any accompanying documentation without prior written notice.

Operating Notes

- By default, display information from the display connected to HDMI output port 1 is sent back to the source. Therefore, other displays connected to the 1:3 Splitter for HDMI 1.3 must be capable of accepting the timing, resolution, and audio format as supported by the display that is connected to HDMI output port 1. It is recommended that the display with the lowest native resolution be connected to HDMI output port 1. This is to ensure that a compatible video signal will be able to be displayed on all connected monitors. There is a generic EDID programmed into the 1:3 Splitter for HDMI 1.3 that can be used instead. See [EDID Management \(page 8\)](#) for more information.

Features and Packing List

Features

- Simultaneously displays a single Hi-Def source on up to three HDTV displays without signal loss
- Maintains sharp HDTV resolutions up to 1080p Full HD and 2K
- HDMI Features:
 - ▶ 225 MHz (up to 12 bit YUV 444 supported @ 1080p)
 - ▶ Deep Color
 - ▶ Dolby® TrueHD and DTS-HD Master Audio™
 - ▶ Lip-Sync
- 3DTV Pass-Through
- Color Space Conversion
- EDID Management for rapid integration of sources and display devices.
- Mono-LOK™ Locking HDMI Connectors
- Supports the use of DVI sources and DVI displays with an HDMI-to-DVI converter cable or adapter
- HDMI and HDCP compliant



Packing List

The 1:3 Splitter for HDMI 1.3 ships with the items listed below. If any of these items are not present in the box when you first open it, immediately contact your dealer or Gefen.

- 1 x 1:3 Splitter for HDMI 1.3
- 1 x 6 ft HDMI cable (M-M)
- 1 x 5V DC Power Supply
- 1 x Quick-Start Guide

Table of Contents

01 Getting Started

| | |
|-------------------------------|---|
| Unit Layout | 2 |
| Front | 2 |
| Back | 3 |
| Installation | 4 |
| Connection Instructions | 4 |
| Sample Wiring Diagram | 4 |

02 Operating the 1:3 Splitter for HDMI 1.3

| | |
|-------------------------------|----|
| EDID Management | 8 |
| Selecting the EDID Mode | 8 |
| Internal EDID | 9 |
| External EDID | 10 |

03 Appendix

| | |
|----------------------|----|
| Specifications | 14 |
|----------------------|----|

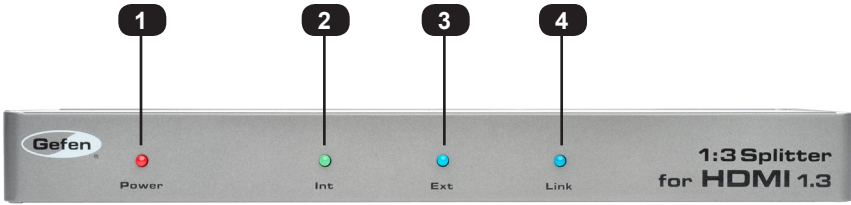
1:3 | Splitter for HDMI 1.3

01 Getting Started

| | |
|-------------------------------|---|
| Unit Layout | 2 |
| Front | 2 |
| Back | 3 |
| Installation | 4 |
| Connection Instructions | 4 |
| Sample Wiring Diagram | 4 |

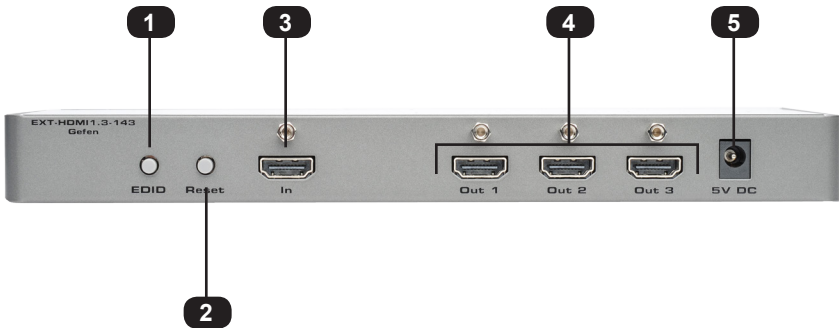
Unit Layout

Front



| ID | Name | Description |
|----|-------|--|
| 1 | Power | This LED indicator will glow bright red once the included power supply is connected between the unit and an available electrical outlet. |
| 2 | Int | This LED indicator will glow bright green when the splitter is using the internal EDID. See EDID Management (page 8) for more information. |
| 3 | Ext | This LED indicator will glow bright blue when the splitter is using the external (downstream) EDID. See EDID Management (page 8) for more information. |
| 4 | Link | This LED indicator will glow bright blue once the active source device is connected to the HDMI In connector. |

Back



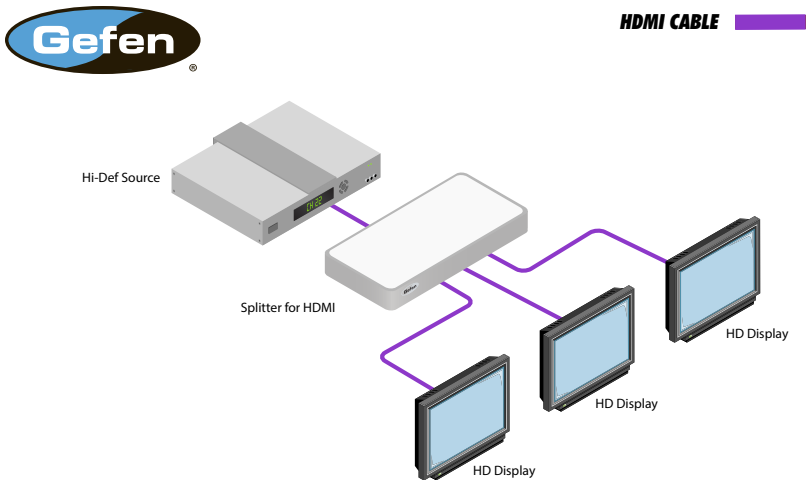
| ID | Name | Description |
|----|--------------------|---|
| 1 | EDID | Press this button to toggle between the internal and external EDID. The unit must be power-cycled when the EDID mode is changed. See EDID Management (page 8) for more information. |
| 2 | Reset | Press this button to power-cycle the splitter. |
| 3 | HDMI In | Use the included HDMI cable to connect the Hi-Def source to this port. |
| 4 | HDMI Out (1, 2, 3) | Connect an HDMI cable from each of these ports to a Hi-Def display. |
| 5 | 5V DC | Connect the included 5V DC power supply to this power receptacle. |

Installation

Connection Instructions

1. Connect the included HDMI cable between the Hi-Def source and the **HDMI In** port on the splitter.
2. Connect up to three Hi-Def displays to the splitter using the **HDMI Out** ports.
3. Connect the included 5V DC power supply from the power receptacle of the splitter to an available electrical outlet.

Sample Wiring Diagram

**EXT-HDMI1.3-143**

1:3 | Splitter for HDMI 1.3

02 Operating the 1:3 Splitter for HDMI 1.3

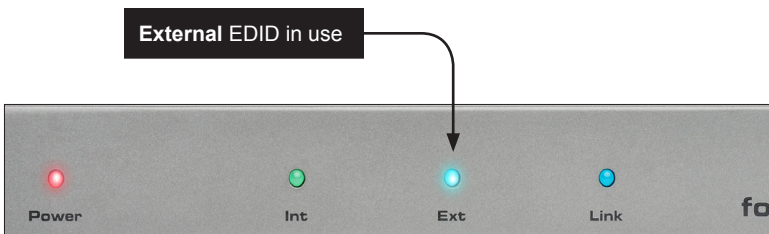
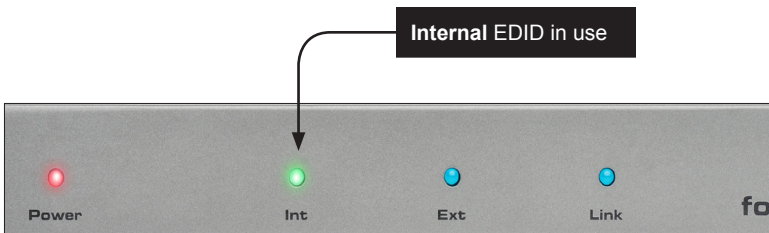
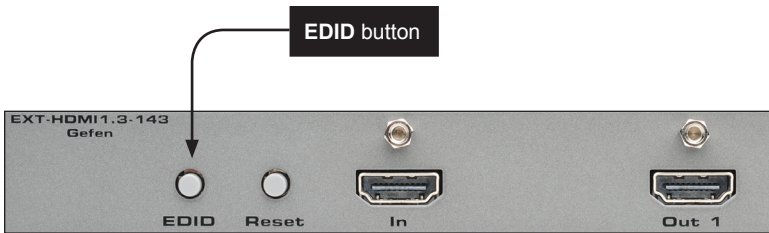
| | |
|------------------------------|----|
| EDID Management..... | 8 |
| Selecting the EDID Mode..... | 8 |
| Internal EDID..... | 9 |
| External EDID | 10 |

EDID Management

The 1:3 Splitter for HDMI 1.3 features EDID Management. Before the source can send video and/or audio to the display (sink), the source reads the EDID (Extended Display Identification Data) from the sink (display) devices that are connected to the splitter. The EDID contains information about what type of audio/video data that the source can send to each output device. The splitter can use either the downstream EDID (from the display/sink) or the built-in internal EDID.

Selecting the EDID Mode

1. Press and release the **EDID** button, on the back panel, to toggle between internal and external EDID modes.
2. The LED indicators on the front panel will display the current EDID mode.
3. After the desired EDID mode is selected, press the Reset button on the back panel. The splitter must be reset or power-cycled when switching between EDID modes.



Internal EDID

Use this EDID mode if problems are encountered when using the external EDID. The built-in internal EDID provides the source device with a “generic” EDID which can be used by all display (sink) devices.

1. Select the internal EDID mode. Refer to [Selecting the EDID Mode \(page 8\)](#).
2. The **Int** LED indicator on the front panel will be illuminated.
3. Press and release the **Reset** button on the back panel of the splitter to reset the unit. The splitter must be reset (or power-cycled) each time the EDID mode is switched.

The table, below, displays the video timings and audio formats supported by the internal EDID.



NOTE: All sink devices connected to the splitter *must* be compatible with at least one resolution / audio format specified in the internal EDID. If one of the connected displays does not support xvYCC, then this feature is removed from the EDID.

| Video Timings | Audio Formats |
|-------------------------------|----------------------------|
| 1280 x 720p @ 50 Hz | LPCM (2CH), |
| 1280 x 720p @ 59.94 / 60 Hz | Dolby Digital (2CH/5.1CH), |
| 1920 x 1080i @ 50 Hz | DTS Digital Surround™ |
| 1920 x 1080i @ 59.94 / 60 Hz* | (2CH/5.1CH) |
| 720 x 480p @ 59.94/60 Hz | |
| 720 x 576 @ 50 Hz | |
| 1920 x 1080p @ 50 Hz | |
| 1920 x 1080p @ 59.94 / 60 Hz | |
| 1440 x 480p @ 59.94 / 60 Hz | |
| 1440 x 576p @ 50 Hz | |

* *Native resolution*

External EDID

When set to **Ext** mode, EDID data will be fetched from the sink that is connected to **HDMI Out 1**. It is recommended that the display with the lowest native resolution be connected to **HDMI Out 1**. This ensures that a compatible video signal will be output to all connected displays.

1. Select the external EDID mode. Refer to [Selecting the EDID Mode \(page 8\)](#).
2. The **Ext** LED indicator on the front panel will be illuminated.
3. Press and release the **Reset** button on the back panel of the splitter to reset the unit. The splitter must be reset (or power-cycled) each time the EDID mode is switched.

When the external EDID is used, the following rules apply:

- ▶ The 1:3 Splitter for HDMI 1.3 will always attempt to read the EDID from the sink device connected to **HDMI Out 1** and copy it to **HDMI In**. **HDMI Out 1** is the (default) primary output port.
- ▶ If a sink device is *not* detected on the primary output port, then the splitter will sequentially scan all subordinate output ports (2, 3, etc.) until a sink device is found. Once detected, this subordinate output port will become the new primary output port and the EDID will be copied to **HDMI In**.

This state will be in effect until a sink device is connected to **HDMI Out 1** and the splitter is power-cycled or the **Reset** button is pressed.

- ▶ EDID capabilities (timings, audio, color depth, etc.) will be supported by all subordinate sink devices *only* if they are supported by the primary sink device.
- ▶ Operational / compatibility issues may result if a subordinate sink device is unable to support the EDID capabilities of the primary sink device.

1:3 | Splitter for HDMI 1.3

03 Appendix

| | |
|----------------------|----|
| Specifications | 14 |
|----------------------|----|

Specifications

Supported Formats

| | |
|--------------------|--|
| Resolutions (max.) | <ul style="list-style-type: none"> • 1920 x 1200 (WUXGA) • 1080p Full HD |
|--------------------|--|

Electrical

| | |
|-------------------------|---------------------|
| Maximum Pixel Clock | • 225 MHz |
| Input Video Signal | • 1.2 Volts p-p |
| Input DDC Signal | • 5 Volts p-p (TTL) |
| Power Indicator | • 1 x LED, red |
| Internal EDID Indicator | • 1 x LED, green |
| External EDID Selector | • 1 x LED, blue |
| Link Indicator | • 1 x LED, blue |
| EDID Selection Button | • 1 x Tact-type |
| Reset Button | • 1 x Tact-type |

Connectors

| | |
|--------------|-----------------------------------|
| Video Input | • 1 x HDMI Type A, 19-pin, female |
| Video Output | • 3 x HDMI Type A, 19-pin, female |

Operational

| | |
|-----------------------|--------------------------------|
| Power Input | • 5V DC |
| Power Consumption | • 13 Watts (max.) |
| Operating Temperature | • +32 to +104 °F (0 to +40 °C) |

Physical

| | |
|---|---|
| Dimensions (W x H x D) (Sender / Receiver) | • 10.5" x 1.0" x 4.25" (266mm x 25mm x 108mm) |
| Unit Weight | • 1.2 lb (0.5 kg) |



Stretch it. Switch it. Split it. Gefen's got it. ®

20600 Nordhoff St., Chatsworth CA 91311
1-800-545-6900 818-772-9100 fax: 818-772-9120
www.gefen.com support@gefen.com



This product uses UL or CE listed power supplies.