



**Intuitive
LED
Lighting**

lowel 

Warnings

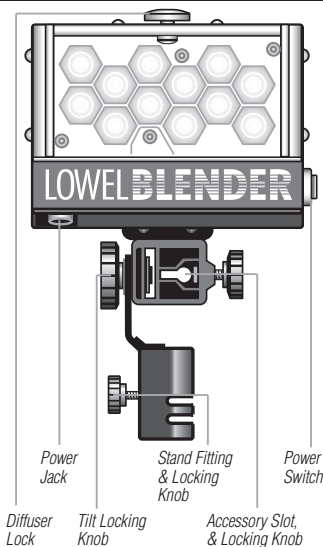
The Lowel Blender™ is a professional AC/DC powered lighting fixture. Read these instructions before operating.

- **Not for house hold use**, use only for professional imaging purposes.
- **Do not immerse unit in water** or use in damp locations.
- **Do not obstruct heat ventilation for unit.**
- **Do not stare directly into LED's.**
- **Do not leave unit unattended.**
- **Always use clear plastic front guard.**

Note: If unit is plugged into either battery or AC Supply, and Power Switch is On, LED's may glow slightly. This is normal and a result of the input voltage circuitry.

Always disconnect batteries or AC supply, when unit is not in use, or being stored.

Blender Technical Data



Weight, Blender Light Alone: 1.2 lbs (544 g)

Input Voltage: 7.2-15 VDC

Max amperage: 8.3

Beam control: Twin rotary controls for daylight & tungsten blend

Fits on: stands, & other 5/8" studs

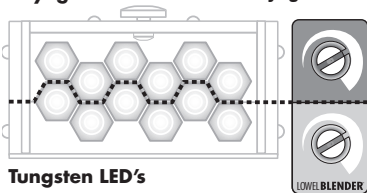
Materials: primarily aluminum & plastic

Switch: in-head

Patent Pending

Intuitive Lighting with Lowel Blender™

Daylight LED's **Controls Daylight LED's**



Tungsten LED's

Controls Tungsten LED's

With unit connected to either AC supply or battery sled, turn Power Switch to ON. Use the 2 rotary controls on the back of the unit to dial in the desired blend of daylight & tungsten color needed to match the scene.

Front Diffusers

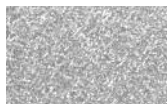
Blender comes with a set of textured front accessory diffusers that can vary the light quality, while diffusing it to help prevent multi-shadows at close distances. The standard is Lite Frost. Also included are Prismatic, & Cracked Ice. There are 2 sets of grooved slots in the front of the Blender to hold these.

A clear plastic front guard is also supplied, to protect the LED's. It should be used in the slot closest to the lamps.

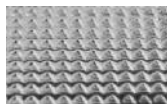
Rotate the Diffuser Lock on top of the Blender to drop the selected diffuser into the grooved drop-in slot on the front of the unit. Return Diffuser Lock to closed position.

Notes: all front diffusers will lower output. For smoothest effect, Prismatic Diffuser should be used with textured side facing outward.

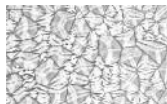
Textured Front Accessory Diffusers



Lite Frost



Prismatic

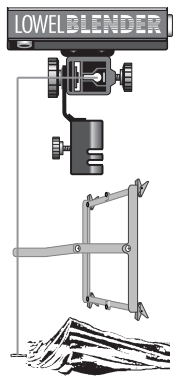


Cracked Ice

Accessories

Accessory Slot

for Gel frame or umbrella



To use a Tota-brella or iP Gel Frame with Blender, attach securely using Accessory Slot & Locking Knob. Remove textured front accessory for added output.

Mounts

In addition to stand mounting, Blender can be used with the following:

Handle & Stud Code: ViP-431

Pistol grip with removable stud



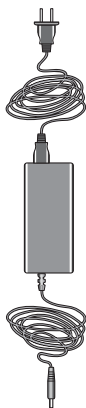
Note: you can also attach the Handle directly to the Blender, without the Stud, by removing Blender's Stand Fitting and screwing the handle into the 1/4-20 thread on the underside of the Accessory Slot.

Cam-link & Stud-link Code: ViP-41S

For mounting on camera shoe.



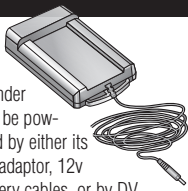
Powering the Lowel Blender™



AC Adaptor auto-sets from 120 - 240v. AC cable plug must be correct for incoming voltage.

A 2 pin Euro plug cable is provided, and can be easily swapped.

Other international AC cables are available at most electronics stores.



The Blender can be powered by either its AC adaptor, 12v battery cables, or by DV camcorder batteries via your choice of Battery Sled. There are 3 models of sled that take the below listed camcorder batteries.

Each sled has both a belt clip, for use when hand-holding the light, and a supplied velcro strap for hanging the battery off of a light stand. This allows freedom of movement when working quickly.



The power jack is located on the bottom of the unit. The power connector for AC adaptor & battery sled has 2 pins that should be lined up with slots on the jack. A slight twist after inserting will lock the cable in place. Untwist to release.

12 Volt Battery Cables (5 ft.)

<u>Code</u>	<u>Cable Connector</u>
BL-85	Cigarette Plug Cable
BL-82	4-Pin XLR Cable
BL-83	Anton Bauer D-Tap

lowel

**Lowel-Light
Manufacturing, Inc.**

90 Oser Avenue,
Hauppauge, NY, 11788

Call: 800 645-2522
631 273-2500

www.lowel.com

TIFFEN®

Panasonic Battery Sled

(BSLD-11) has Universal Adapter Plate for Panasonic - CGA-DU07/14/21, CGA-S001/002, CGR-D120/D220/D320, CGRS006A/S602/S603, CGR-D53S/D54S, plus Samsung - SB-L70G/L110G

Canon Battery Sled (BSLD-13)

has Universal Adapter Plate for Canon - BP-2L12/L214/2L5, BP-911/914/915/924/927/930 /941/945/950G/970G, NB-2L/2LH, JVC - BN-V408U/416U/428U, plus Samsung - SB-L110/L160/L220/L320/L480

Sony Battery Sled (BSLD-12)

has adaptor plate for Sony NP-F330, NP-F550, NP-F730H, NP-F750, NP-F950, NP-FM50, NP-FM70, NP-FM90

Note: for added caution, secure battery to sled with a strong rubber band.

Problems, Info, Repairs, etc.

Lowel equipment and kits are sold through authorized Lowel Dealers and, in some countries, Authorized Lowel Distributors. Repairs, problems, suggestions, and requests for brochures, instructions, parts lists may be handled by your authorized Lowel Dealer (Distributor) or directly with Lowel. Electrical repairs should be made only by Lowel or a qualified electrician.

Patent Pending



Ver. 1.1 © 2010 Lowel-Light
Mfg. Inc. 300