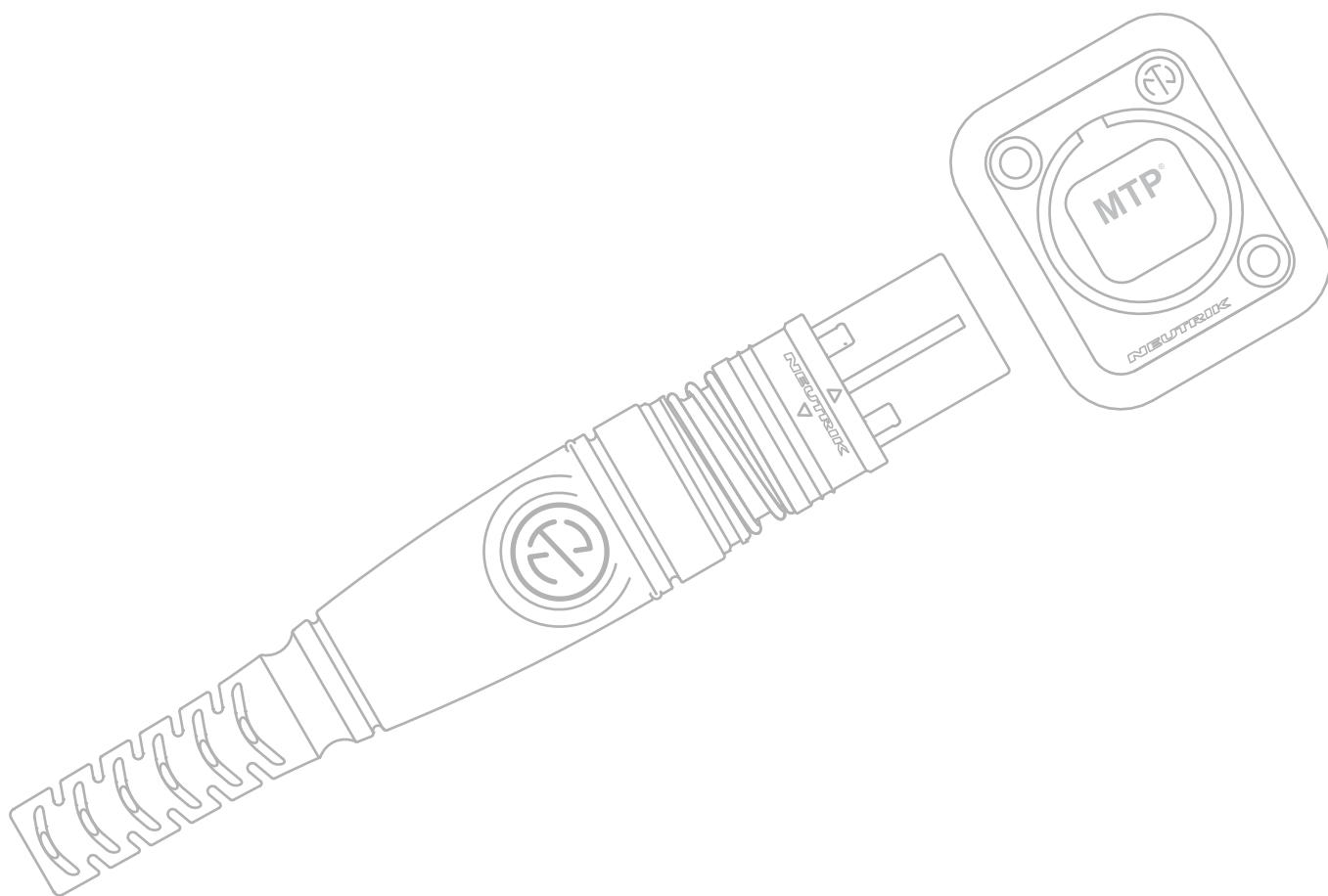




HANDLING INSTRUCTION

opticalCON MTP® | Maintenance





CAUTION: Laser radiation, do not look directly into beam of light!

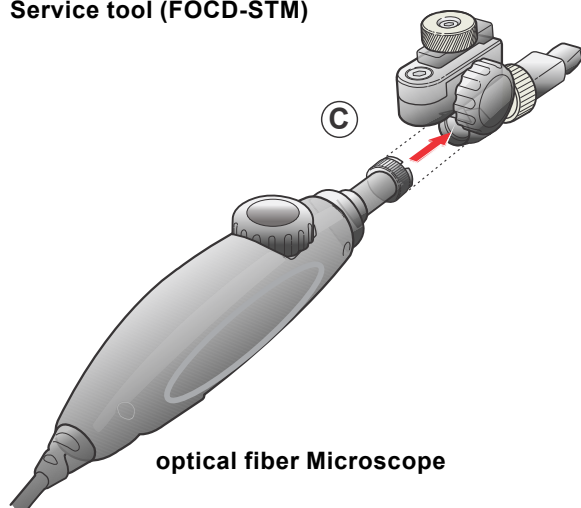
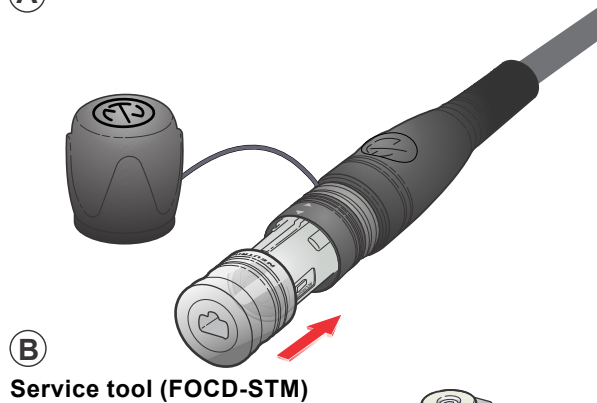
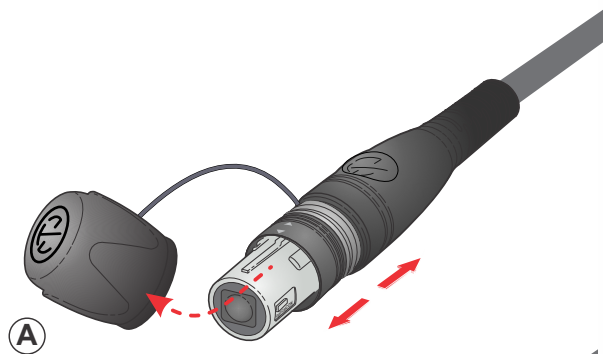
The sealing shutter mechanism of the opticalCON avoids contamination of the MTP® ferrule locked inside. The dust-proof design reduces maintenance intervals to a minimum; if nevertheless necessary, follows the maintenance procedure below to avoid damages on the due to inproper cleaning.

A. Connector Cleaning / Inspection

Intervall: every 500 matings recommended

Tools:

- NEUTRIK MTP® service Tool (FOCD-STM)
- Dry Cleaner MPO/MTP® (FOCD-DCM)
- optical fiber video probe

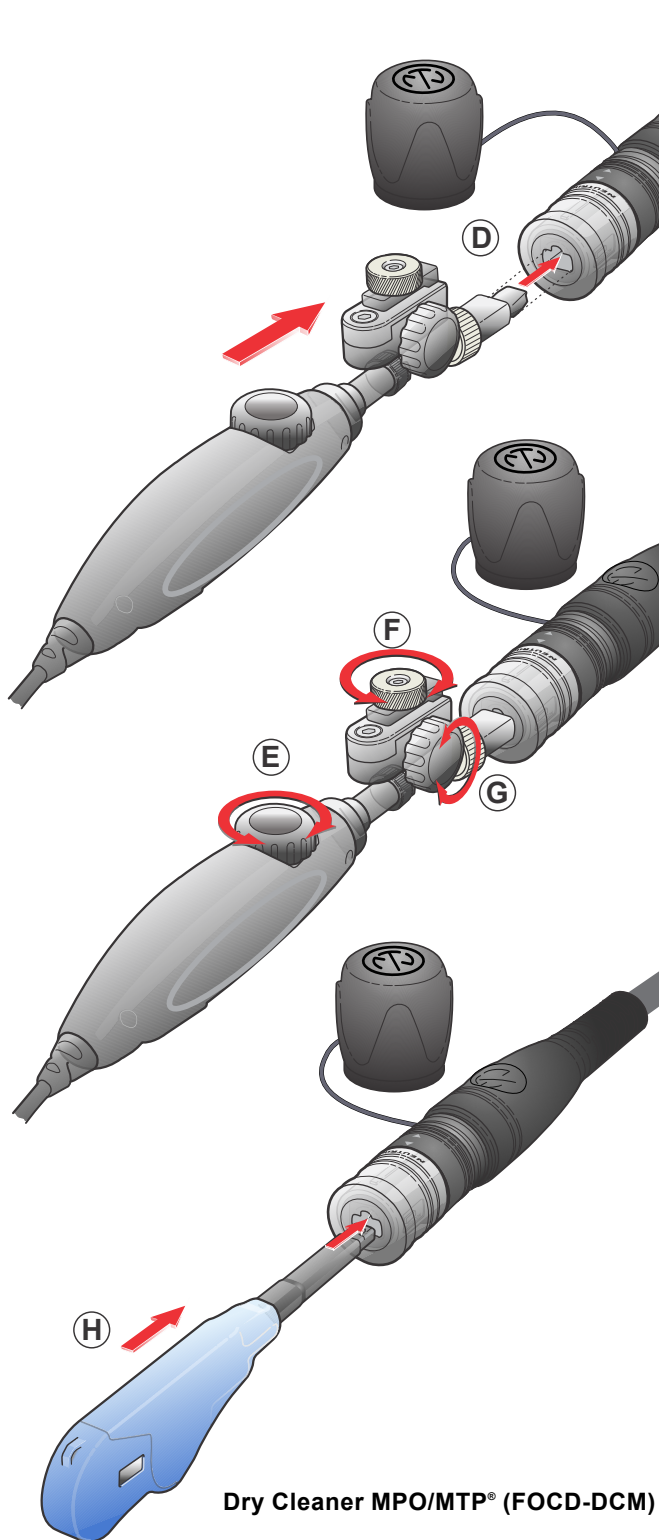


1. Disconnect both cable ends for safety reasons. Invisible laser radiation may be emitted from disconnected fibers or connectors. Do not stare into beams or view directly with optical instruments.

2. Remove dust cap from the connector (A) and mount NEUTRIK FOCD-STM inspection tool on it until it is locked (B).

3. Prepare the optical fiber video probe with the correlate singlemode or multimode tip (C). Under the following QR-code you can find a list with appropriate video probs and tips.





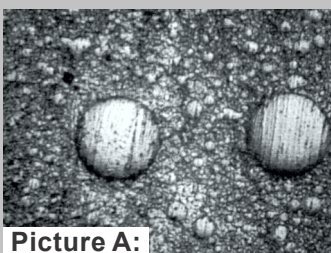
4. Insert the video probe tool into our NEUTRIK FOCD-STM service tool (D).

5. To inspect the MTP® ferrule surface focus the video probe by rotating the focus wheel (E) and to switch (F) or move to the next ferrule rotate the wheels on the tip (G).

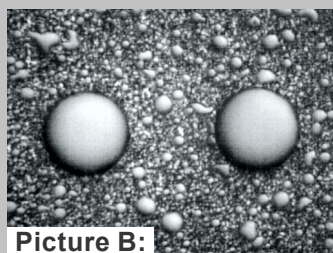
6. Clean the MTP® surface with the Dry Cleaner over the NEUTRIK MTP® service tool.

7. Push back and forth the dry cleaner to start the cleaning procedure (H). An endless lint free tape removes dust particle on the ferrule surface of the MTP® connector.

8. Check the condition of the MTP® ferrule surface again and if necessary repeat step 7.

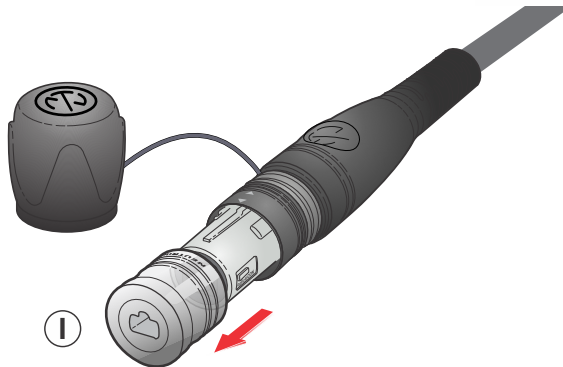


Picture A:



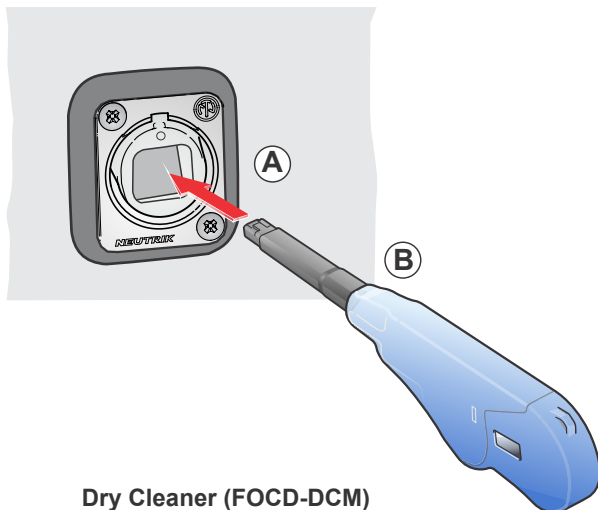
Picture B:

During inspection procedure, make sure that each ferrule is completely free of dust. As a reference the ferrule has to look as illustrated on Picture B.



9. After the cleaning procedure unlock the NEUTRIK inspection tool (I).

B. Chassis Cleaning



Dry Cleaner (FOCD-DCM)

Dry cleaning using FOCD-DCM

1. Remove dust cap and insert the tip of the dry cleaning cleaner.
2. Guide the tip to the dry cleaner into the chassis housing (A).
3. Push back and forth the dry cleaner to start the cleaning procedure (B). An endless lint free tape removes dust particle on the ferrule surface of the MTP® connector.
4. After cleaning procedure, remove dry cleaner and covers the tip with the dust cap.



Find more details of opticalCON on www.neutrik.com.

NEUTRIK AG
NEUTRIK USA Inc.
NEUTRIK (UK) Ltd.
NEUTRIK Vertriebs GmbH

LI
USA
UK
DE/NL/AT/DK

T: +423 / 237 24 24
T: +1 704 / 972 3050
T: +44 1983 / 811 441
T: +49 8131 / 280 890

F: +423 / 232 53 93
F: +1 704 / 438 9202
F: +44 1983 / 811 439
F: +49 8131 / 280 830

NEUTRIK France
NEUTRIK Tokyo Ltd.
NEUTRIK Hong Kong Ltd.
NEUTRIK India Pvt. Ltd.

FR
JP
HK
IND

T: +33 1 / 4131 6750
T: +81 3 / 3663 4733
T: +852 / 2687 6055
T: +91 / 982 05 43 424

F: +33 1 / 4131 0511
F: +81 3 / 3663 4796
F: +852 / 2687 6052
F: +91 / 22 26163 540

Draft. Nr.: BDA 518 | Update: 20.03.2017 | Data subject to change without prior notice. ©2017 NEUTRIK®. ALL RIGHTS RESERVED. NEUTRIK® is a registered trademark.