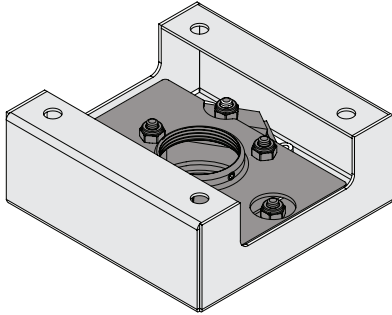




# Vibration Reducing Adapter Installation Instructions



The Vibration Reducing Adapter (PP-VIB) is ideal for education, corporate and any other environment where a stable image is needed. To keep the projector or flat-panel display image steady, the large rubber dampers inside the PP-VIB absorb vibrations near the mount caused by heavy traffic, equipment motors, slamming doors and other activities.

The PP-VIB fits any 1.5" NPT pipe and a ceiling stud, a solid ceiling surface, or Premier Mounts' PP-FCMA ceiling adapter. The maximum weight capacity is 50 lbs.



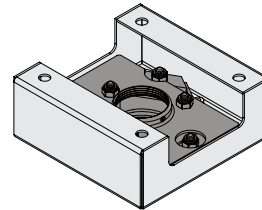
1321 S State College Blvd Fullerton, CA 92831 USA

USA and Canada

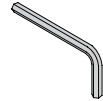
Phone: 1.800.368.9700 Fax: 1.800.832.4888

Other Locations – Phone: (001).714.632.7100; Fax: (001).714.632.1044 ©Premier Mounts 2010

## Parts List



PP-VIB (Qty 1)



M3 Allen Wrench (Qty 1)

## Installing the PP-VIB

**?** Are you attaching the PP-VIB to a wood stud, a solid ceiling surface, or Premier Mounts' PP-FCMA ceiling adapter?

If a wood stud, continue to the **"Wood Stud"** section below.

If a solid ceiling surface, go to the **"Solid Ceiling Surface"** section on page 2.

If a PP-FCMA ceiling adapter, go to the **"PP-FCMA Installation"** section on page 2.

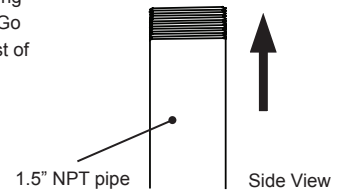
**!** If you are installing the PP-VIB to an existing installation, you may need to remove the mount and/or 1.5" NPT pipe.

## Step 3

Insert either the 1.5" NPT cable access pipe or a 1.5" NPT pipe (not included) into the PP-VIB.



If you are using the cable access pipe, you can also fasten a ceiling or pipe adapter (not included). Go to [www.mounts.com](http://www.mounts.com) to see a list of adapters.

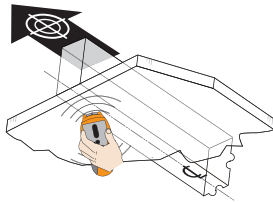


## Wood Stud Installation

### Step 1

If needed, use an electronic stud finder to locate the center of the desired ceiling wood stud.

**!** This location is where you will attach the PP-VIB and projector mount.

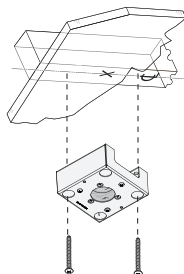


### Step 2

Use two (2) 3/8" x 2 1/2" wood screws (not included) to attach the PP-VIB to the wood stud.

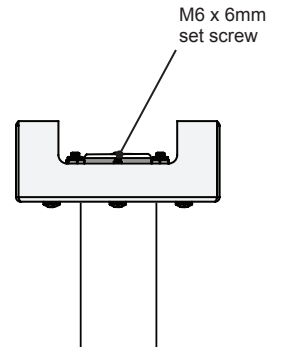
**!** Angle the PP-VIB so that you can insert two screws through the device and into the wood stud.

**!** To prevent the stud from splitting, drill pilot holes first using a 1/8" drill bit.



## Step 4

Using the M3 Allen wrench, tighten the M6 x 6mm set screw in the PP-VIB to secure the pipe to the device.



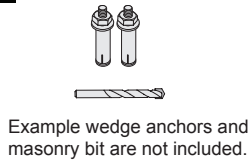
## Step 5

Attach the mount to the pipe. Refer to the mount's instructions.



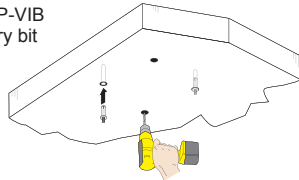
### Solid Ceiling Surface Installation

You can mount the PP-VIB to any solid surface ceiling with a minimum 6" thickness. For concrete installation, use concrete wedge anchors (3/8" recommended) to secure the mounting hardware and a masonry drill bit to drill the pilot holes.



#### Step 1

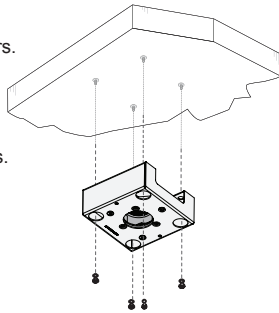
- Drill 4 ceiling mounting holes for the PP-VIB using the appropriate diameter masonry bit for your wedge anchor.
- Remove the nut and washer from the wedge anchors.
- Insert a wedge anchor into each hole.



Drill the holes using the PP-VIB's 4.5" bolt pattern.

#### Step 2

- Place the PP-VIB over the wedge anchors.
- Thread a wedge anchor nut and washer onto each threaded wedge anchor shaft.



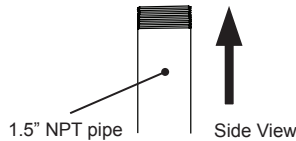
Do not overtighten the wedge anchor nuts.

#### Step 3

Insert either the 1.5" NPT cable access pipe or a 1.5" NPT pipe (not included) into the PP-VIB.

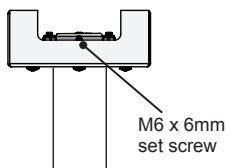


If you are using the cable access pipe, you can also fasten a ceiling or pipe adapter (not included). Go to [www.mounts.com](http://www.mounts.com) to see a list of adapters.



#### Step 4

Using the M3 Allen wrench, tighten the M6 x 6mm set screw in the PP-VIB to secure the pipe to the device.



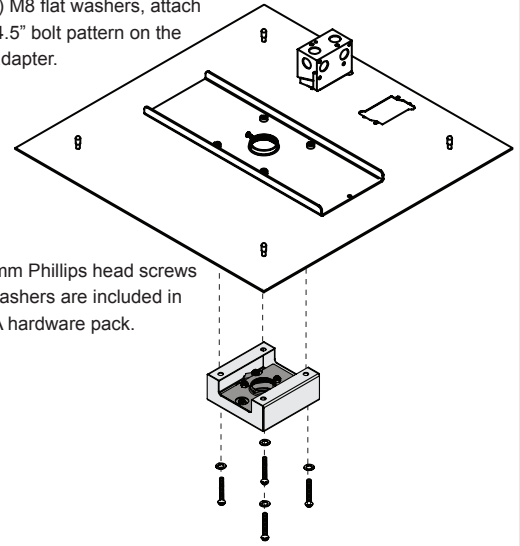
#### Step 5

Attach the mount to the pipe. Refer to the mount's instructions.

### PP-FCMA Installation

#### Step 1

Using four (4) M8 x 20mm Phillips head screws and four (4) M8 flat washers, attach the PP-VIB to the 4.5" bolt pattern on the PP-FCMA ceiling adapter.



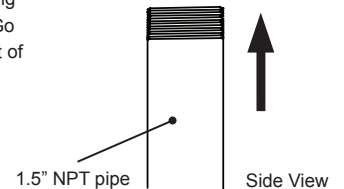
The M8 x 20mm Phillips head screws and M8 flat washers are included in the PP-FCMA hardware pack.

#### Step 2

Insert either the 1.5" NPT cable access pipe or a 1.5" NPT pipe (not included) into the PP-VIB.

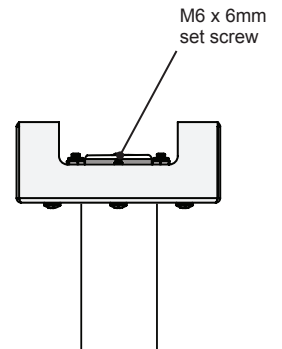


If you are using the cable access pipe, you can also fasten a ceiling or pipe adapter (not included). Go to [www.mounts.com](http://www.mounts.com) to see a list of adapters.



#### Step 3

Using the M3 Allen wrench, tighten the M6 x 6mm set screw in the PP-VIB to secure the pipe to the device.



#### Step 4

Attach the mount to the pipe. Refer to the mount's instructions.