

*audioport*  
**A 200**  
Hearing Amplifier



Instruction manual

## Important safety information

- ▶ Please read this instruction manual carefully and completely before using the product.
- ▶ Make this instruction manual easily accessible to all users at all times. Always include this instruction manual when passing the product on to third parties.
- ▶ This instruction manual is also available on the Internet at [www.sennheiser.com](http://www.sennheiser.com).

### Preventing health problems

- ▶ Set the volume to a low level when using the product. To protect your hearing, avoid listening at high volume levels for long periods of time.

The product generates stronger permanent magnetic fields that could cause interference with cardiac pacemakers and implanted defibrillators (ICDs).

- ▶ Always maintain a distance of at least 3.94" (10 cm) between the ends of the earbows with the ear pads and the cardiac pacemaker or implanted defibrillator.

### Preventing damage to the product

- ▶ Always keep the product dry and do not expose it to extreme temperatures (normal operating temperatures: 5°C/41°F to 40°C/104°F).
- ▶ Use the product with care and store it in a clean, dust-free environment.
- ▶ Switch the personal sound amplifier off after use to conserve battery power. Remove the batteries if the personal sound amplifier will not be used for extended periods of time.
- ▶ Use only the supplied power supply unit.
- ▶ Clean the product only with a soft, dry cloth.
- ▶ Do not use the product if it visibly damaged, if it has been dropped or if liquids or objects have gotten into the product. In this case, contact a qualified service center or your Sennheiser service partner to have the product tested.
- ▶ Use only attachments/accessories/spare parts supplied or recommended by Sennheiser.

### Preventing damage to the mains unit

- ▶ To reduce the risk of fire or electric shock, do not expose the mains unit to rain or moisture.

- ▶ Unplug the mains unit from the wall socket to completely disconnect the product from the mains, during lightning storms or when unused for long periods of time.
- ▶ Only operate the mains unit from the type of power source specified in the specifications chapter (see page 9).
- ▶ To prevent heat accumulation, always ensure that the mains unit is in a safe operating condition and easily accessible, properly plugged into the wall socket and not covered or exposed to direct sunlight for longer periods of time.

### Intended use

This product is designed for private domestic use. The personal sound amplifier is suitable for people who may sometimes need to rely on artificial assistance for their hearing.

“Improper use” means using the product

- other than as described in this instruction manual,
- under operating conditions which differ from those described in this instruction manual.

### Safety instructions for the nickel metal hydride batteries

If abused or misused, the A 200's rechargeable battery may leak. In extreme cases, it may even present



- a heat hazard,
- a fire hazard,
- an explosion hazard,
- a smoke or gas hazard.

Please understand that Sennheiser does not accept liability for damage arising from abuse or misuse.



Keep away from children.













Only charge rechargeable batteries with the charger recommended by Sennheiser.



Only charge rechargeable batteries at ambient temperatures between 10°C/50°F and 40°C/104°F.




When not using rechargeable batteries for extended periods of time, charge them regularly (about every 3 months).

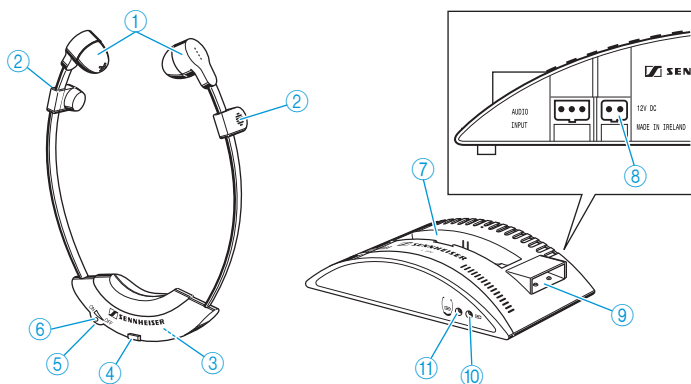
|   |  |   |  |
|---|--|---|--|
|  | Do not expose to moisture.   |  | Observe correct polarity.  |
|  | Do not mutilate or dismantle.  |  | Switch rechargeable battery-powered products off after use.  |
|  | Do not heat above 70°C/158°F, e.g. do not expose to sunlight or throw into a fire. |  | Pack/store charged batteries so that the terminals cannot contact each other – danger of shorting out/fire hazard. |
|  | Immediately remove rechargeable batteries from an obviously defective product.     |  | Do not continue to use defective rechargeable batteries.   |
|  | Only use rechargeable batteries specified by Sennheiser.                           |  | Dispose of rechargeable batteries at special collection points or return it to your specialist dealer.             |



## Delivery includes

- 1 A 200 personal sound amplifier
- 1 L 200 charger
- 1 NT 12-2T plug-in power supply unit (country-specific, EU or US) for L 200
- 1 BA 151 rechargeable battery
- 2 pairs of spare ear pads
- 1 set of sealing tape
- 1 instruction manual

 A list of accessories can be found on the A 200 product page at [www.sennheiser.com](http://www.sennheiser.com). For information on suppliers, contact your local Sennheiser partner: [www.sennheiser.com](http://www.sennheiser.com) > “Service & Support”.

## Product overview



- 1 Ear pads
- 2 Microphones
- 3 Balance control (at the rear)
- 4 Battery compartment
- 5 On/off/sound amplification control
- 6 Indicator for sound amplification
- 7 Charging compartment for A 200
- 8 DC socket for connection of mains unit
- 9 Charging compartment for optional spare rechargeable battery
- Charging indicator for optional spare rechargeable battery 
- A Charging indicator for the A 200's rechargeable battery 

## Putting the L 200 charger into operation

### Setting up the charger

#### CAUTION

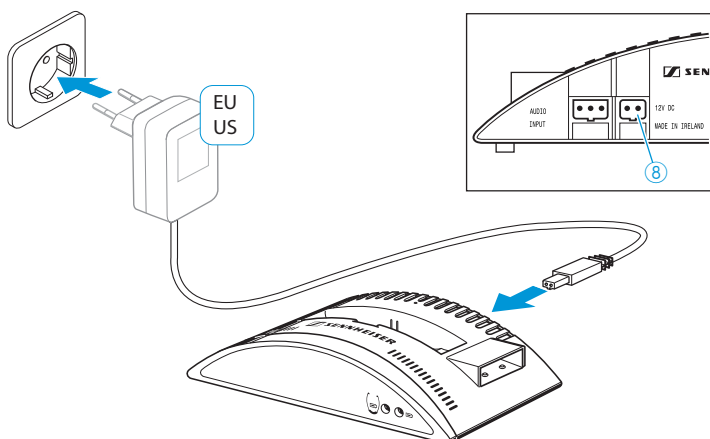
Risk of staining furniture surfaces!

Furniture surfaces are often treated with varnish, polish or synthetics which might cause stains when they come into contact with other synthetics such as the device feet.

- ▶ Do not place the charger on delicate surfaces; if necessary, place a pad under the charger.

- ▶ Place the charger on a flat, even surface and use a non-slip pad.

## Connecting the charger to the mains



- ▶ Connect the connector of the mains unit to the socket 8 on the charger (12 V DC).
- ▶ Connect the mains unit to a wall socket. The charger is ready for operation.

To disconnect the charger from the mains:

- ▶ Unplug the mains unit from the wall socket.

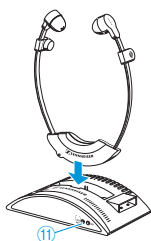
## Charging and replacing the rechargeable battery

The rechargeable battery can be charged whilst installed in the A 200 or separately in the charging compartment at the side of the charger.



- ▶ Before using the rechargeable battery for the first time, charge it for at least 16 hours. With a fully charged rechargeable battery, the operating time is up to 12 hours.

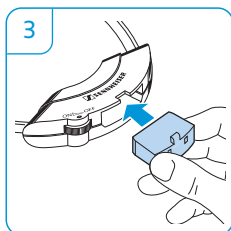
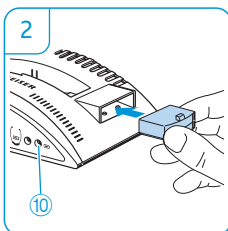
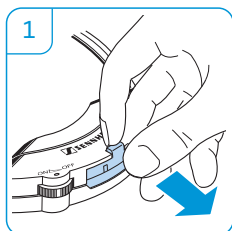
### Charging the A 200 with the rechargeable battery installed

- ▶ After use, place the A 200 into the charging compartment without exerting too much pressure, making sure the Sennheiser logo is at the front.
- ▶ When the A 200 is placed correctly, the indicator (A) lights up green.



### Charging the rechargeable battery in the charging compartment at the side of the charger

- 1 Pull the rechargeable battery out of the A 200's battery compartment.
- 2 Insert the rechargeable battery into the charging compartment at the side of the charger. When the rechargeable battery is inserted correctly, the indicator   lights up green.
- 3 Slide the rechargeable battery into the A 200's battery compartment as far as it will go.



With a spare BA 151 rechargeable battery (to be ordered separately), you can use the A 200 for more than twice the time. You can charge the spare rechargeable battery while using the supplied one and replace one with the other when needed.

## Using the A 200 personal sound amplifier



### WARNING

**Danger of hearing damage!**

Listening at high volume levels for long periods can lead to permanent hearing defects.

- ▶ Before putting the A 200 on, set the volume to a low level.
- ▶ Then adjust a comfortable sound amplification.



### WARNING

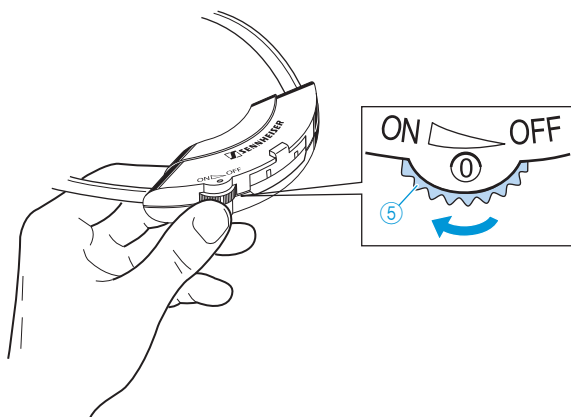
**Interference due to magnetic fields!**

The product generates stronger permanent magnetic fields that could cause interference with cardiac pacemakers and implanted defibrillators (ICDs).

- ▶ Always maintain a distance of at least 3.94" (10 cm) between the ends of the earbuds with the ear pads and the cardiac pacemaker or implanted defibrillator.

## Switching the A 200 on/off

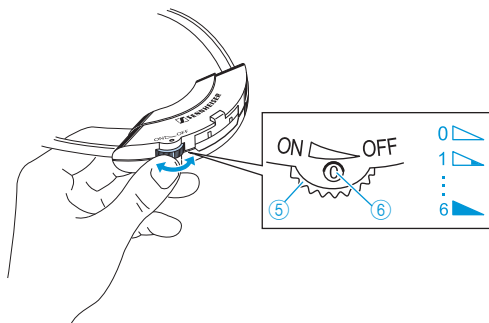
- ▶ Turn the on/off/sound amplification control 5 towards **ON** until you overcome a slight resistance.



## Adjusting the sound amplification

You can choose between 6 different settings for the sound amplification 6. Position "1" corresponds to a low sound amplification and position "6" corresponds to a very high sound amplification.

- ▶ Use the control 5 to adjust the volume to a sufficient and comfortable level.
- ▶ If you hear a loud noise (feedback), turn the control 5 towards **OFF** until the noise disappears.

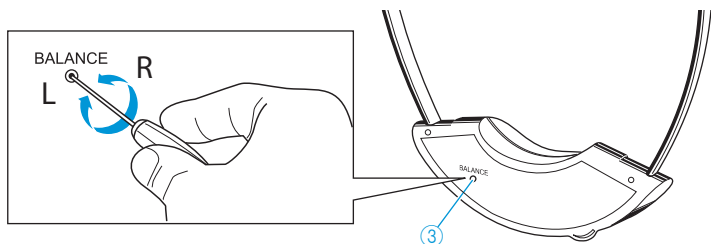




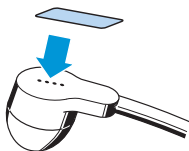
## Adjusting the balance

The balance control allows for right/left volume adjustment. Adjust the balance so that you hear equally well with both ears. If necessary, have the balance adjusted by your hearing aid acoustician.

- ▶ Using a 2 mm slotted screwdriver, turn the balance control **3** to the left **L** or right **R** in order to increase the volume for the corresponding ear.



## Adjusting the bass attenuation



The more holes you seal with the sealing tape, the greater is the bass attenuation. This increases the speech intelligibility without increasing the volume – which is an advantage for people with a hearing impairment at high frequencies.

- ▶ Use the two supplied sealing tapes to seal the small holes in back of the headphone systems of the A 200.

## Cleaning and maintaining the product

### CAUTION

Liquids can damage the electronics of the product!

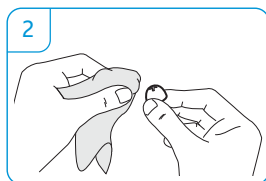
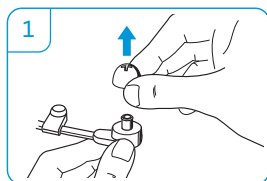
Liquids entering the housing of the product can cause a short-circuit and damage the electronics.

- ▶ Keep all liquids far away from the product.
  - ▶ Do not use any solvents or cleansing agents.
- 
- ▶ Before cleaning, disconnect the charger from the mains.
  - ▶ Only use a slightly humid cloth to clean the product.

## Cleaning and replacing the ear pads

The product is supplied with two pairs of ear pads in different fits. You can change to these ear pads to optimize the wearing comfort, if necessary. Other spare ear pads are available from your Sennheiser partner.

- 1 Carefully remove the ear pads from the A 200.
- 2 Clean the ear pads with warm soapy water and rinse thoroughly. Let the ear pads air dry.



## Specifications

### A 200 personal sound amplifier

|                                     |                  |
|-------------------------------------|------------------|
| Frequency response                  | 200 - 12,000 Hz  |
| Max. SPL (at 1 kHz)                 | 105 dB           |
| Acoustic amplification, stereo      | max. 35 dB       |
| Pick-up pattern of microphones      | omni-directional |
| Supply voltage                      | 2.4 V            |
| Current consumption                 | approx. 5 mA     |
| Operating time                      | up to 12 hours   |
| Weight (incl. rechargeable battery) | approx. 51 g     |

### L 200 charger and BA 151 rechargeable battery

|                                       |                                     |
|---------------------------------------|-------------------------------------|
| Input voltage L 200                   | 12 V                                |
| Current consumption L 200             | approx. 20 mA                       |
| Charging outputs (2x)                 | max. 7 mA/max. 2.8 V                |
| Charging time of rechargeable battery | approx. 16 hours                    |
| BA 151 rechargeable battery           | nickel metal hydride: 2.4 V, 80 mAh |

### NT 12-2T plug-in power supply unit (country-specific, EU or US)

|                            |  |
|----------------------------|--|
| Nominal input voltage      | 100–240 V~                             |
| Input current              | max. 50 mA<br>@ 240 V/50 Hz, full load |
| Mains frequency            | 50–60 Hz                               |
| Nominal output voltage     | 12 V DC                                |
| Nominal output current     | max. 250 mA                            |
| Stand-by power consumption | ≤ 0.3 W                                |
| Energy efficiency          | DOE Level VI                           |
| Temperature range          | Operation: 0°C to +40°C                |
| Relative humidity          | Operation: max. 80%,<br>non condensing |

### NT 12-2T plug-in power supply unit in accordance with

|           |  |
|-----------|--|
| Europe    | EMC: EN 55013, EN 55020<br>Safety: EN 60950-1      |
| USA       | EMC: 47CFR15_B<br>Safety: UL 60950-1               |
| Canada    | EMC: ICES-003<br>Safety: CAN/CSA-C22.2 NO. 60950-1 |
| Australia | EMC: AS/NZS 4268<br>Safety: AS/NZS 60950-1         |

The NT 12-2T plug-in power supply unit is certified in accordance with the safety requirements of legislation in Europe, the US, Canada and Australia.

## Manufacturer declarations

### Warranty

Sennheiser electronic GmbH & Co. KG gives a warranty of 24 months on this product. For the current warranty conditions, please visit our website at [www.sennheiser.com](http://www.sennheiser.com) or contact your Sennheiser partner.

#### FOR AUSTRALIA ONLY

Sennheiser goods come with guarantees that cannot be excluded under the Australian Consumer Law. You are entitled to a replacement or refund for a major failure and compensation for any other reasonably foreseeable loss or damage. You are also entitled to have the goods repaired or replaced if the goods fail to be of acceptable quality and the failure does not amount to a major failure. This warranty is in addition to other rights or remedies under law. Nothing in this warranty excludes, limits, or modifies any liability of Sennheiser which is imposed by law, or limits or modifies any remedy available to the consumer which is granted by law.

To make a claim under this warranty, contact Sennheiser Australia Pty Ltd, Unit 3, 31 Gibbes Street Chatswood NSW 2067, Australia; Phone: (02) 9910 6700, email: [service@sennheiser.com.au](mailto:service@sennheiser.com.au).

All expenses of claiming the warranty will be borne by the person making the claim.

The Sennheiser International Warranty is provided by Sennheiser Australia Pty Ltd (ABN 68 165 388 312), Unit 3, 31 Gibbes Street Chatswood NSW 2067 Australia.

### In compliance with the following requirements:

- WEEE Directive (2012/19/EU)



Please dispose of this product by taking it to your local collection point or recycling centre for such equipment.

- Battery Directive (2013/56/EU)





The supplied rechargeable battery can be recycled. Please dispose of it as special waste or return it to your specialist dealer. In order to protect the environment, only dispose of exhausted batteries.

## CE Declaration of Conformity

- EMC Directive (2004/108/EC)
- RoHS Directive (2011/65/EC)
- Low Voltage Directive (2006/95/EC)
- ErP Directive (2009/125/EG)

The declaration is available at [www.sennheiser.com](http://www.sennheiser.com).

### In compliance with:

|                           |   |
|---------------------------|---|
| Europe                    |  |
| Australia/<br>New Zealand |  |
| Canada                    | CAN ICES-3 (B)/NMB-3(B)   |



**Sennheiser electronic GmbH & Co. KG**

Am Labor 1, 30900 Wedemark, Germany  
[www.sennheiser.com](http://www.sennheiser.com)

Publ. 12/15, 566667/A01

