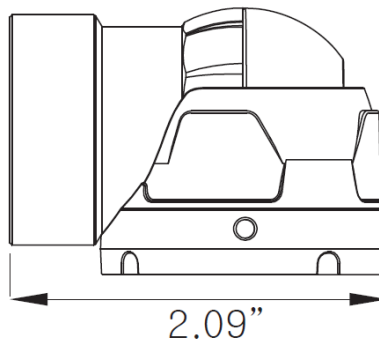
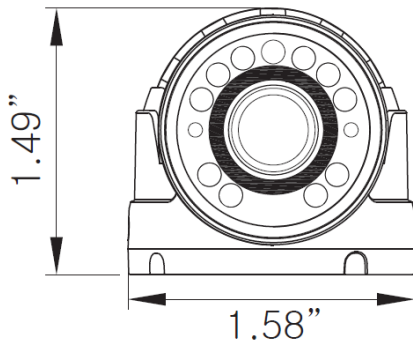


960H 700TVL IR Mini Turret Camera (0.00 LUX)
BUILT-IN 10 POWER INFRARED LEDS
WEATHER / VANDAL RESISTANT

Model No. : HT71HG and HT71HW



200 New Highway, Amityville, NY 11701
800-645-5516 / www.specotech.com



*Accessory *
3 mounting screw
1 wrench

GENERAL FEATURE

- 700TVL HIGH RESOLUTION
- 10IR LEDs / 35' IR range
- * Only 1.58 in diameter
- Weather / Vandal Resistant
- IP66 compliant

INSTALLATION

- 1) Connect Video & Power Line (12V DC Regulated Power)
- 2) Please set the position where you want to connect the camera
- 3) Loosen the locking screws and adjusting camera angle
- 4) Combine each camera parts and lock & tight the each locking screws

SPECIFICATION

MODEL NO.	HT71HG / W
Image Sensor	1/3" 960H COLOR CCD
Lens	2.9 mm
Number of Pixels	976(H) *508(V)
Horizontal Resolution	700TVL
Minimum Illumination	0.00Lux (LED ON)
Electronic Shutter Speed	1/60~1 / 100,000sec
S/N Ratio	More than 48dB
Scanning System	2 : 1 Interlaced
Sync. System	Internal
Video Output	1.0Vp-p 75ohm composite
Power Consumption	IR-Off (100mA), IR-On (200mA) at DC12V
Operating Temperature	14°F – 120°F
Weight	4oz.