



OPERATING INSTRUCTIONS

WIRELESS TUNER

WT-5810

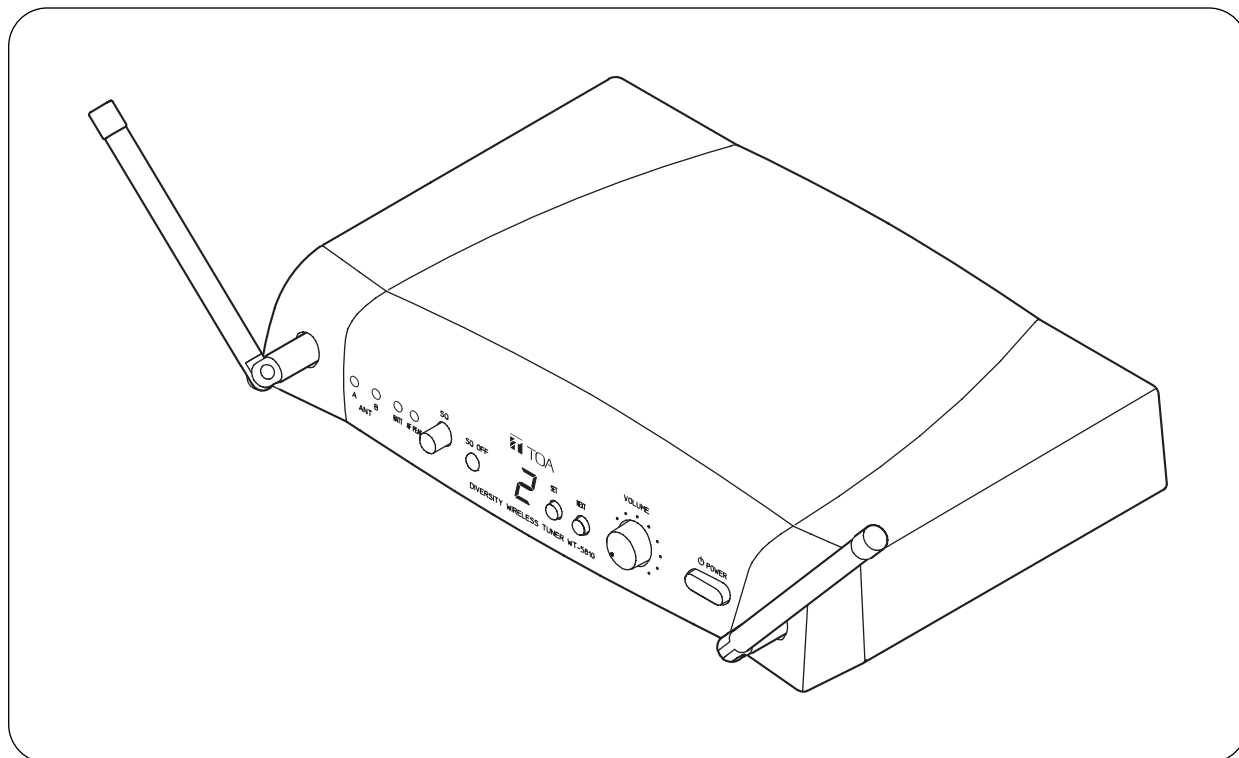


TABLE OF CONTENTS

1. SAFETY PRECAUTIONS	2	8. HOW TO CHECK AND DEAL	
2. GENERAL DESCRIPTION	3	WITH INTERFERENCE	
3. FEATURES	3	8.1. Order of Actions (Action Flowchart)	6
4. HANDLING PRECAUTIONS	3	8.2. Checking Ambient Signal Condition	7
5. NOMENCLATURE AND FUNCTIONS		8.3. Reducing Radio Interference	
Front	4	by the Squelch Control	7
Rear	4	8.4. Channel Detection	8
6. OPERATION	5	9. SPECIFICATIONS	8
7. CHANNEL NUMBER SETTING	6	Accessory	8

Thank you for purchasing TOA's Wireless Tuner.

Please carefully follow the instructions in this manual to ensure long, trouble-free use of your equipment.

TOA Corporation

1. SAFETY PRECAUTIONS

- Be sure to read the instructions in this section carefully before use.
- Make sure to observe the instructions in this manual as the conventions of safety symbols and messages regarded as very important precautions are included.
- We also recommend you keep this instruction manual handy for future reference.

Safety Symbol and Message Conventions

Safety symbols and messages described below are used in this manual to prevent bodily injury and property damage which could result from mishandling. Before operating your product, read this manual first and understand the safety symbols and messages so you are thoroughly aware of the potential safety hazards.



WARNING

Indicates a potentially hazardous situation which, if mishandled, could result in death or serious personal injury.

When Installing the Unit

- Do not expose the unit to rain or an environment where it may be splashed by water or other liquids, as doing so may result in fire or electric shock.
- Use the unit only with the voltage specified on the unit. Using a voltage higher than that which is specified may result in fire or electric shock.
- Do not cut, kink, otherwise damage nor modify the power supply cord. In addition, avoid using the power cord in close proximity to heaters, and never place heavy objects -- including the unit itself -- on the power cord, as doing so may result in fire or electric shock.
- Avoid installing or mounting the unit in unstable locations, such as on a rickety table or a slanted surface. Doing so may result in the unit falling down and causing personal injury and/or property damage.
- To prevent lightning strikes, install the unit at least five meters away from a lightning rod, and yet within the protective range (angle of 45°) of the lightning conductor. Lightning strikes may cause a fire, electric shock or personal injury.
- Since the unit is designed for in-door use, do not install it outdoors. If installed outdoors, the aging of parts causes the unit to fall off, resulting in personal injury. Also, when it gets wet with rain, there is a danger of electric shock.

When the Unit is in Use

- Should the following irregularity be found during use, immediately switch off the power, disconnect the power supply plug from the AC outlet and contact your nearest TOA dealer. Make no further attempt to operate the unit in this condition as this may cause fire or electric shock.
 - If you detect smoke or a strange smell coming from the unit.
 - If water or any metallic object gets into the unit
 - If the unit falls, or the unit case breaks
 - If the power supply cord is damaged (exposure of the core, disconnection, etc.)
 - If it is malfunctioning (no tone sounds.)
- Do not place cups, bowls, or other containers of liquid or metallic objects on top of the unit. If they accidentally spill into the unit, this may cause a fire or electric shock.
- Do not touch the unit's antennas during thunder and lightning, as this may result in electric shock.



CAUTION

Indicates a potentially hazardous situation which, if mishandled, could result in moderate or minor personal injury, and/or property damage.

When Installing the Unit

- Never plug in nor remove the power supply plug with wet hands, as doing so may cause electric shock.
- When unplugging the power supply cord, be sure to grasp the power supply plug; never pull on the cord itself. Operating the unit with a damaged power supply cord may cause a fire or electric shock.
- When moving the unit, be sure to remove its power supply cord from the wall outlet. Moving the unit with the power cord connected to the outlet may cause damage to the power cord, resulting in fire or electric shock. When removing the power cord, be sure to hold its plug to pull.

- The socket outlet shall be installed near the equipment and shall be easily accessible.
- Avoid installing the unit in humid or dusty locations, in locations exposed to the direct sunlight, near the heaters, or in locations generating sooty smoke or steam as doing otherwise may result in fire or electric shock.

When the Unit is in Use

- Do not place heavy objects on the unit as this may cause it to fall or break which may result in personal injury and/or property damage. In addition, the object itself may fall off and cause injury and/or damage.
- Make sure that the volume control is set to minimum position before power is switched on. Loud noise produced at high volume when power is switched on can impair hearing.
- Never open the unit case as there are high temperature parts inside the unit, which may cause a burn if touched. Refer all servicing to your nearest TOA dealer.
- Use the dedicated AC-DC adapter for the unit. Note that the use of other adapter may cause a fire.
- If dust accumulates on the power supply plug or in the wall AC outlet, a fire may result. Clean it periodically. In addition, insert the plug in the wall outlet securely.
- Switch off the power, and unplug the power supply plug from the AC outlet for safety purposes when cleaning or leaving the unit unused for 10 days or more. A fire or electric shock may result.
- Any modifications made to this device that are not approved by TOA Corporation may void the authority granted to the user to operate this equipment.
- The term "IC:" before the radio certification number only signifies that the Industry Canada technical specifications were met. Operation is subject to the following two conditions:
 - (1) this device may not cause interference, and
 - (2) this device must accept any interference, including interference that may cause undesired operation of the device.

2. GENERAL DESCRIPTION

The WT-5810 Wireless Tuner is designed for use on the UHF band, and suitable for vocal or speech reinforcement applications. It features a compander circuit which minimizes the influence of ambient noise.

3. FEATURES

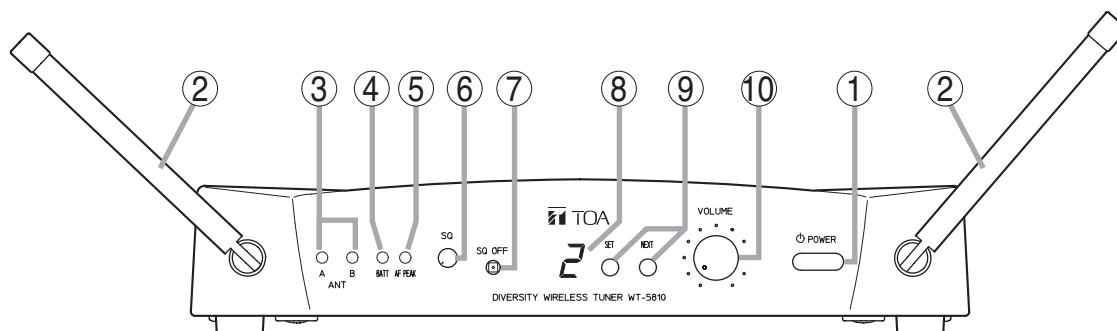
- 16 different operating frequencies ranging from 636 to 698 MHz.
- An optimized PLL-synthesizer minimizes the oscillation frequency drift resulting from the ambient temperature change.
- Compact and high reliability

4. HANDLING PRECAUTIONS

- When installing, keep the unit as far away as possible from fluorescent lamps, digital equipment, personal computers, and other equipment that generate high frequency noise.
- When cleaning the case, use a dry cloth. Never use benzine, thinner or other volatile liquids.
- When using two or more wireless microphones, keep them at least 50 cm away from each other to avoid malfunctions or noise.
- Keep the wireless microphone at least 3 m away from the receiving antenna. Using the microphone in close proximity to the antenna could result in malfunctions or noise.

5. NOMENCLATURE AND FUNCTIONS

[Front]



1. Power switch

Press this switch to turn the power on, and press it again to turn off the power.

2. Rod antennas

Raise both antennas at 45° outwards from a vertical line.

When carrying the unit, be sure to fold down both antennas to prevent them from break.

3. Reception lamps

Either lamp of A (left) or B (right) lights yellow when the tuner receives a radio signal.

4. Battery alarm lamp

Lights when the battery voltage in the corresponding wireless microphone becomes low.

5. AF peak lamp

Lights red when the tuner output level reaches the point about 3 dB below the clipping level.

6. Squelch control

Adjusts the squelch level.

7. RF check button

Switches off the squelch for monitoring the receiving frequency.

8. Channel number display

Indicates the current channel number in normal state.

In setting mode, the indicated channel number flashes until registered.

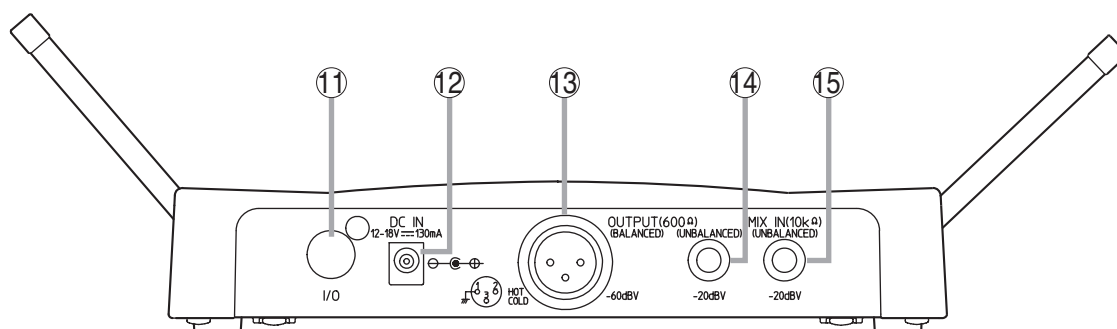
9. Channel setting keys (SET and NEXT keys)

Used to select the receiving channel (frequency). (The tuner frequency must be identical to that of the microphone.)

10. Volume control

Adjusts the output level.

[Rear]



11. I/O port

Used for service only.

12. DC input jack

Connect the power cable of the supplied AC-DC adapter to this jack.

13. AF output

Balanced XLR jack, male type (Pin #2: Hot)

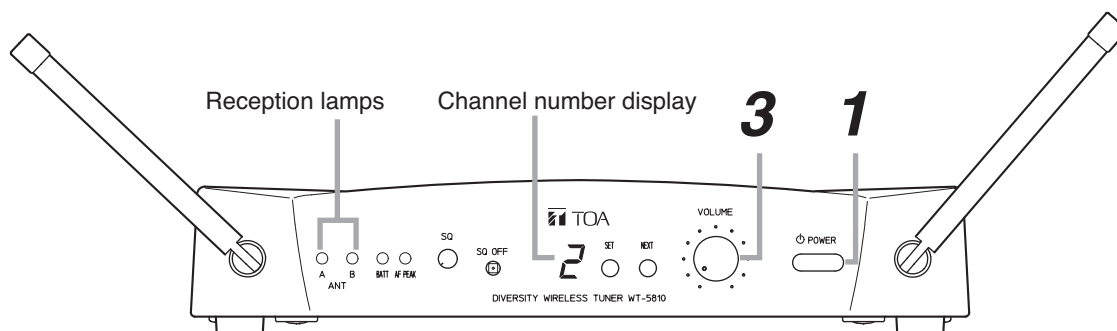
14. AF output

Unbalanced phone jack

15. AF mixing input (unbalanced)

Connects to other unit's AF output. Input level: -20 dB, 10 kΩ (0 dB = 1 V)

6. OPERATION



Step 1. Turn the power on, and the Channel number display lights to indicate the channel number.

Step 2. Set the wireless microphone switch to the ON position.

The reception lamp lights when the tuner receives the same frequency signal.

Step 3. Adjust the volume control.

The output level increases as the volume is turned clockwise, and decreases as turned counterclockwise.

Microphone Sensitivity Adjustment

Although the audio level is preset by the factory, it can be adjusted depending on the user's voice level.

Step 1. Holding the microphone body, rotate the microphone grip counterclockwise to remove it in the case of the hand-held microphone, or slide the battery cover down to open it in the case of the lavalier microphone.

Step 2. Turn on the power of the tuner and microphone.

Step 3. Adjust the microphone's audio level control using a screwdriver. The sensitivity increases as the control is rotated clockwise, and decreases as rotated counterclockwise.

Step 4. Set the volume control so that its knob points to the 2 o'clock position. If the AF peak lamp remains lit, readjust the microphone's audio level control so that the lamp only flashes when the signal reaches its highest peak.

Step 5. Replace the microphone grip (hand-held type) or the battery cover (lavalier type).

The tuner's AF peak lamp lights when the tuner output level reaches the point of about 3 dB below the clipping level. The Peak lamp operates in response to the volume control position.

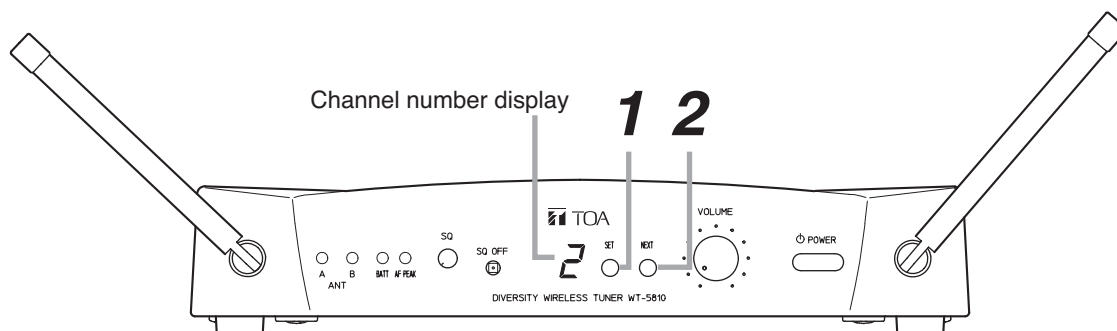
7. CHANNEL NUMBER SETTING

Step 1. Press the Set key for about a second until the displayed channel number flashes.

Step 2. Select the desired channel number with the NEXT key, and press the Set key for about a second until the flashing number turns to steady light.

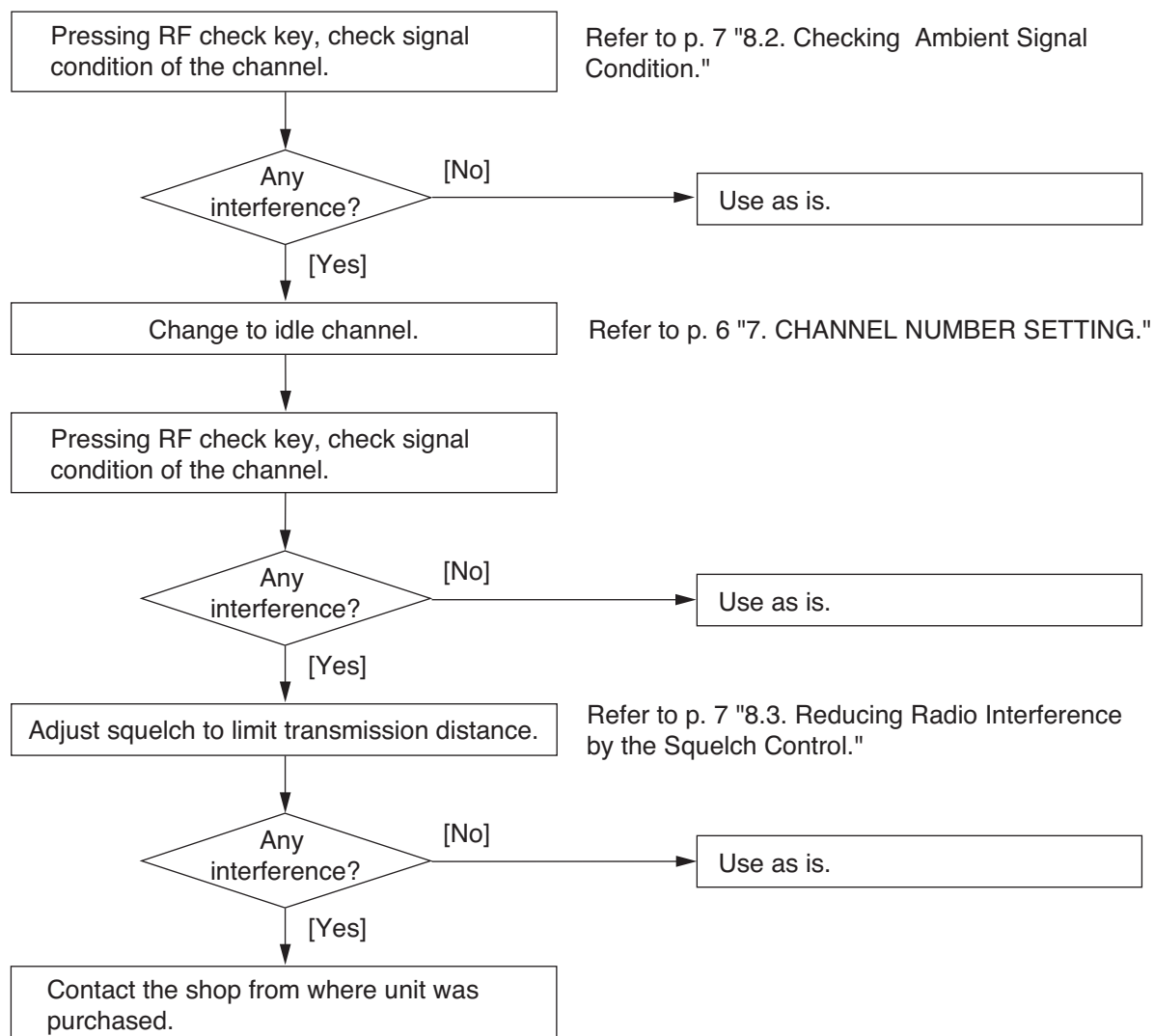
Tip

Continuous or each depression of the NEXT key permits the display to cycle through the channel numbers.



8. HOW TO CHECK AND DEAL WITH INTERFERENCE

8.1. Order of Actions (Action Flowchart)



8.2. Checking Ambient Signal Condition

8.2.1. What is the "squelch"?

In FM receivers, such as a wireless tuner, big noise is produced at the output when incoming signals are weak or when no signal is present. When the signal received is lower than a certain level of signal strength, by silencing the output, the noise can be suppressed. It is a squelch circuit that achieves this. An RF check button is provided to permit check of a disturbing wave when the unit is interfered with during its use. The key also checks the presence of the disturbing wave in the channel of the new channel numbers when the unit is set for such numbers.

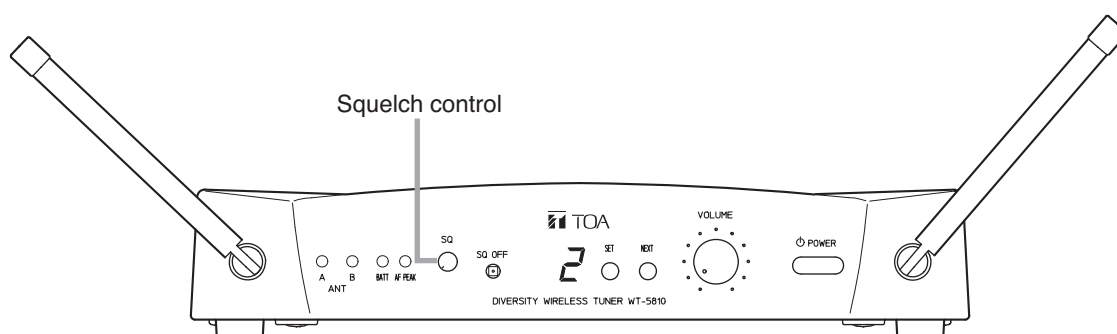
8.2.2. Operation

Hold down the RF check button for a while. As long as this button is pressed, the wireless tuner outputs the condition received in the highest sensitivity, allowing an operator to hear radio interference.

Note

Take care about the volume level since noise or interfering sounds are heard while the key is pressed.

8.3. Reducing Radio Interference by the Squelch Control

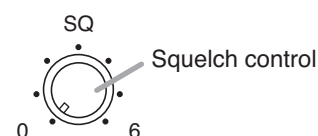


The WT-5810 tuner has the squelch function that virtually eliminates ambient noise and unwanted audio signals from other wireless microphone systems by silencing the output when the signal received is lower than a certain level of signal strength.

This signal strength level can be varied by means of the squelch control. The sensitivity is the highest and radio signals can be received in wide areas when the control is in the "fully counterclockwise" position, while the "fully clockwise" position makes the sensitivity the lowest, permitting the radio signals to be only received in narrow areas.

It is possible to eliminate disturbing waves and only receive the radio signal transmitted from the required microphone by changing the squelch setting to make the radio signal reception area narrow. The wireless microphone's signal transmission distance varies largely depending on its ambient conditions.

The table below provides the guideline on the squelch control vs. transmission distance ratio, supposing that the squelch control is graduated from "0" to "6" as illustrated though not actually so.



Squelch Control Graduation	0	1	2	3	4	5	6
Transmission Distance (%)	100	85	70	50	30	20	15

Note: Transmission distance is a relative ratio with respect to 100% at "0" level.

Tips

- Set the control to the "0" position in locations free from interference.
- Set the control to the position that does not cause any reception loss of wireless microphone signals.

8.4. Channel Detection

- Step 1.** Press the Set key and the Next key at the same time for over a second.
Channel detection begins, and an idle channel number is indicated flashing on the channel number display.
- Step 2.** Press the Next key to select the channel.
- Step 3.** To set the channel to the unit, press the Set key for over a second until the flashing number turns to steady light.

9. SPECIFICATIONS

Power Source	120 V AC (Supplied AC-DC adapter must be used.)
Power Consumption	130 mA (12 V DC)
Receiving Frequency	636 – 698 MHz, UHF
Selectable Channel	16 channels
Receiving System	Double super-heterodyne
Diversity System	Space diversity
AF Output	MIC: –60 dB*, 600 Ω , balanced, XLR-3-32 type connector LINE: –20 dB*, 600 Ω , unbalanced, phone jack
AF Mixing Input	–20 dB*, 10 k Ω , unbalanced, phone jack
Antenna	Rod antenna
Receiving Sensitivity	Over 90 dB, S/N ratio (20 dB μ V input, 40 kHz deviation)
Squelch Sensitivity	18 – 40 dB μ V variable
Squelch System	Using together of noise SQ, carrier SQ and tone SQ
Tone Frequency	32.768 kHz
Indicator	ANT A/B, Audio (peak), Battery alarm, Channel number
Channel Check	Usable frequencies scanning
S/N Ratio	Over 104 dB (A-weight, unbalanced output)
Harmonic Distortion	Under 1% (typical)
Frequency Response	100 – 15000 Hz, ± 3 dB
Operating Temperature	–10°C to +50°C
Finish	Resin, black
Dimensions	206 (w) x 40.6 (h) x 152.7 (d) mm (excluding antenna)
Weight	590 g

* 0 dB = 1 V

Note: The design and specifications are subject to change without notice for improvement.

• Accessory

AC-DC adapter 1

