

NOTES: UNLESS OTHERWISE SPECIFIED
 1. DESIGNED FOR USE WITH BELDEN 1855A OR EQUIVALENT CABLE.

2. MATERIAL SPECIFICATIONS:
 BODY: BRASS PER ASTM B16.
 CENTER CONTACT: COPPER ALLOY.
 OUTER CONTACT: COPPER ALLOY.
 INSULATOR: TEFLON PER ASTM D1710.
 FERRULE: BRONZE C22000.

3. FINISH SPECIFICATIONS:
 BODY: .000100 MIN NICKEL PER AMS-QQ-N-290 OVER COPPER FLASH PER ASTM B734 (RoHS).
 CENTER CONTACT: .000030 MIN GOLD PER ASTM B488 OVER .000080 MIN NICKEL PER AMS-QQ-N-290 (RoHS).
 OUTER CONTACT: .000030 MIN GOLD PER ASTM B488 OVER .000080 MIN NICKEL PER AMS-QQ-N-290 (RoHS).
 FERRULE: .000050 MIN NICKEL PER AMS-QQ-N-290 OVER .000050 MIN COPPER FLASH PER ASTM B734 (RoHS).

4. STRIP USE KINGS KTS-8-2.

5. CRIMP FERRULE USE KINGS KTH-1000 & KTH-2025(.178 HEX).

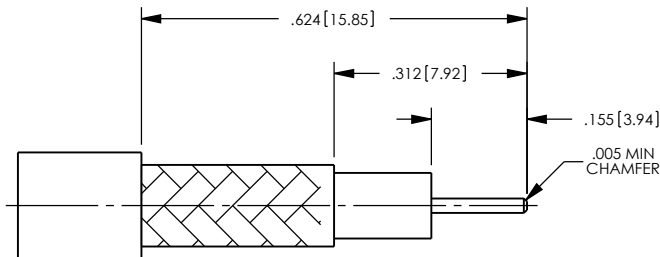
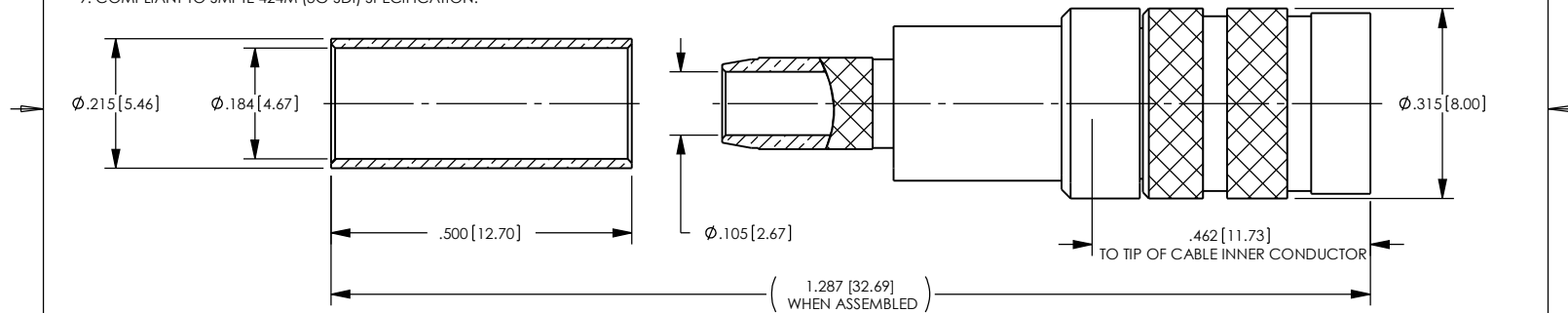
6. INTERFACE PER CECC 22230.

7. CAP-E02.

8. ELECTRICAL SPECIFICATIONS:
 IMPEDANCE: 75 OHMS.
 FREQUENCY RANGE: DC-3GHz.
 VSWR: 1.25 MAX DC-3GHz.

9. COMPLIANT TO SMPTE 424M (3G-SDI) SPECIFICATION.

REV	DESCRIPTION	BY DATE	APPD
B	REVISED NOTES ER13784	FSM 4/27/08	VA



CATALOG P/N: 0345-E00-C7201N

PER ASME Y14.5M-1994 UNLESS OTHERWISE SPECIFIED: DIMENSIONS ARE IN INCHES [MM] TOLERANCES: DECIMAL: .XX [X.X] ± .01 [0.3] .XXX [X.XX] ± .005 [0.13] .XXXX [X.XXX] ± .XXX ANGLES: ± 2° SCALE: 4:1				 by WINCHESTER ELECTRONICS Winchester Electronics Corporation 62 Barnes Industrial Road North Wallingford, Connecticut 06492	
CUSTOMER DRAWING				75 OHM 1.0/2.3 PLUG FOR 1855A CABLE (RoHS COMPLIANT)	
DRAWN	DATE	APPROVED	DATE	A SD0345-E00-C7201N SHT 1 of 1	REV B
DW	05/22/08	DCom	05/28/08		
APPROVED	DATE	APPROVED	DATE		
XXX	XX/XX/XX	XXX	XX/XX/XX		