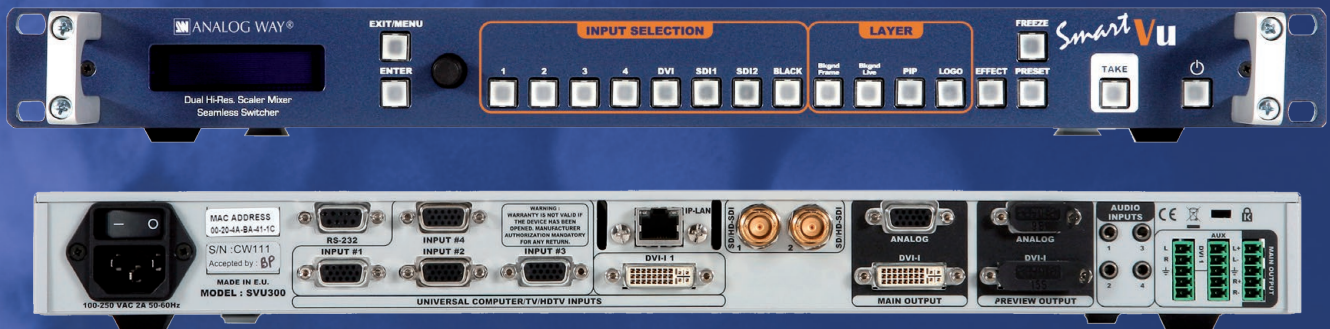


SmartVU



THANK YOU

Thank you for choosing Analog Way. By following these simple steps, you should be able to operate the powerful **SVU300**.

TABLE OF CONTENTS

1

INTRODUCTION

4

1-1. SVU300 OPERATING MODE

4

1-2. USEFUL TERMS AND DEFINITIONS

4

HARDWARE INSTALLATION

5

2-1. SAFETY INSTRUCTION

5

2-2. UNPACKING AND INSPECTION

10

2-3. RACKMOUNT INFORMATION

10

2-4. CABLE & ADAPTOR INFORMATION

11

2-5. HARDWARE SPECIFICATIONS

11

Input specifications

Output specifications

Communication specifications

Environmental specifications

Pin outs

HDCP compliance

CONNECTING THE SVU300

18

3-1. CONNECTING THE SVU300

18

3-2. THE SVU300 REAR PANEL

19

Overview

Universal Inputs #1 to #5

DVI Inputs #1

SD/HD-SDI Inputs #1 - #2

Preview outputs

Main outputs

4-1. THE SVU300 FRONT PANEL

23

Overview
Standby button
Menu section
Input selection section
Preset selection section
PIP button
Logo button
Freeze button
Background Frame button
Background Live button
Effect selection button
Take button

4-2. THE SVU300 MENU

26

Menu navigation
Home menu

4-3. WORKING WITH THE SVU300

27

Resetting default values
SVU300 color codes
Source input selection
Source output selection
Input selection settings
Output selection settings
Working with PIPs
PIP configuration
PIP as layers
Memorizing frames
Working with frames
Memorizing logos
Working with logos
Mixer functions
Layer transitions and effects
Working with presets
Preset configuration
Using presets
Working with audio
Audio configuration

HOME MENU

34

REMOTE CONTROL SOFTWARE

41

5-1. THE SVU300 RCS

41

RCS presentation
How to use the RCS
Software installation
Software overview
Serial connection
Ethernet connection

Source input configuration
Source output configuration
Working with PIPs
PIP configuration
Working with frames
Memorizing frames
Working with logos
Memorizing logos
Layer transitions and effects
Working with presets
Preset configuration
Using presets
Working with audio
Audio configuration

OPTIONAL REMOTE CONTROL SYSTEMS

47

6-1. Axion2 - Ref. ARC200	47
6-2. Orchestra - Ref. ORC50	47
6-3. TRK-800 - Ref. TRK-800	47
6-4. RK-300 - Ref. RK-300	47

APPLICATION EXAMPLES AND TIPS

48

7-1. ABOUT APPLICATION EXAMPLES	48
7-2. APPLICATION EXAMPLE	48
7-3. EXTERNAL PROGRAMMING	49

WARRANTY AND SERVICES INFORMATION

50

8-1. ANALOG WAY LIMITED WARRANTY	50
8-2. SERVICES AND RMA	50

CONTACT INFORMATION

51

HOW TO CONTACT US	51
INFORMATION ON DISPOSAL	51

1-1. MIXER MODE

This mode allows for a single **Smart Vu** to seamlessly switch and blend any of its 7 analog/digital inputs with any other of the inputs, add PIP, titling or logo insertion on the live frame, while previewing your every move before going live. The Mixer mode is the **Smart Vu** native mode, and will display up to 3 layers (of which 2 live layers).

1-2. USEFUL TERMS AND DEFINITIONS

BACKGROUND : a “Background” is a source, typically originating from a computer. **Smart Vu** enables you to work with live or still (frame) background sources - visually in back of all other sources.

LAYER: a “Layer” is an image display element (such as a PIP, Key, Logos or Background) that has an associated visual priority — either in front (or in back) of another layer.

The **Smart Vu** can simultaneously view no less than 3 layers (1 video, or live layer, 1 frame layer, or background, and 1 logo layer).

Smart Vu can insert up to 1 PIP on a live background, plus 1 logo (Logo is optional).

PIP: a “PIP” (Picture In Picture), is a picture, typically of reduced size, which is positioned over another background image or PIP. PIPs can be reduced, enlarged, bordered and shadowed. PIPs can overlap, depending on their visual priority.

Smart Vu allows for Dynamic PIP on the opening and closing of the sequence, vertically or horizontally. A “flying” PIP is also possible over the screen with vertical, horizontal or diagonal animation.

A PIP is considered as a live layer.

FRAME: a “Frame” is a full screen image which is selected from one of the eight still frames which you can capture with the **Smart Vu**. A Frame can be flash captured and imported from any video or computer source plugged into the machine.

LOGO: a “Logo” is a part of screen image that can be flash captured and imported from any Video or Computer source, by keying or image cut-out. **Smart Vu** can record up to 4 still logos. They can be positioned anywhere on the screen.

KEYING: a “Key” is an electronic process whereby an image is electronically superimposed over another source or background, by cutting out either a color (chroma key), or its brightness or luminance levels (luma key) . Keys are typically used for titles, logos and special effects. **Smart Vu** allows to use a live source with green or blue background and to key it over any other live input.

Smart Vu allows to use a live source with green or blue background and to key it over any other live input.

2-1. SAFETY INSTRUCTIONS

SAFETY INSTRUCTIONS

All of the safety and operating instructions should be read before the product is operated and should be maintained for further reference. Please follow all of the warnings on this product and its operating instructions.

WARNING: To prevent the risk of electric shock and fire, do not expose this device to rain, humidity, intense heat sources (such as heaters and direct sunlight). Slots and openings in the device are provided for ventilation and to avoid overheating. Make sure the device is never placed near a textile surface that could block the openings. Also keep away from excessive dust, vibrations and shocks.

POWER: Only use the power supply indicated on the device of the power source. Devices equipped with a grounding plug should only be used with a grounding type outlet. In no way should this grounding be modified, avoided or suppressed.

POWER CORD: The device is equipped with a main switch (On (I) /Off (O)). The Switch ON and OFF is initiated by the main switch.

Caution: The power cord constitute the only mean to totally disconnect the equipment from the main power.

Apply the following guidelines:

- The equipment connected to the network must have a release system easily accessible and located outside the unit.
- Unplug the power cord, do not pull on the power cord but always on the plug itself.
- The outlet should always be near the device and easily accessible.
- Power supply cords should be routed so that they are not likely to be walked on or pinched by items placed upon or against them.

If the power supply cord is damaged, unplug the device. Using the device with a damaged power supply cord may expose your device to electric shocks or other hazards. Verify the condition of the power supply cords once in a while. Contact your dealer or service center for replacement if damaged.

CONNECTIONS: All inputs and outputs (except for the power input) are TBTS defined under EN60950.

SERVICING: Do not attempt to service this product yourself by opening or removing covers and screws since it may expose your device to electric shocks or other hazards. Refer all problems to qualified service personnel.

OPENINGS: Never push objects of any kind into this product through the openings. If liquids have been spilled or objects have fallen into the device, unplug it immediately and have it checked by a qualified technician.

INSTRUCTIONS DE SECURITE

Afin de mieux comprendre le fonctionnement de cet appareil nous vous conseillons de bien lire toutes les consignes de sécurité et de fonctionnement de l'appareil avant utilisation. Conserver les instructions de sécurité et de fonctionnement afin de pouvoir les consulter ultérieurement. Respecter toutes les consignes marquées dans la documentation, sur le produit et sur ce document.

ATTENTION : Afin de prévenir tout risque de choc électrique et d'incendie, ne pas exposer cet appareil à la pluie, à l'humidité et aux sources de chaleur intense.

INSTALLATION : Veillez à assurer une circulation d'air suffisante pour éviter toute surchauffe à l'intérieur de l'appareil. Ne placez pas l'appareil sur ou à proximité d'une surface textile susceptible d'obstruer les orifices de ventilation. N'installez pas l'appareil à proximité de sources de chaleur comme un radiateur ou une poche d'air chaud, ni dans un endroit exposé au rayonnement solaire direct, à des poussières excessives, à des vibrations ou à des chocs mécaniques. Ceci pourrait provoquer un mauvais fonctionnement et un accident.

ALIMENTATION : Ne faire fonctionner l'appareil qu'avec la source d'alimentation indiquée sur l'appareil. Les appareils doivent être obligatoirement connectés sur une source équipée d'une mise à la terre efficace. En aucun cas cette liaison de terre ne devra être modifiée, contournée ou supprimée.

CORDON D'ALIMENTATION : Les appareils sont équipés d'un interrupteur général (Marche I / Arrêt O), la mise en tension et la mise hors tension se fait en actionnant cet interrupteur général. Attention : Le cordon d'alimentation constitue le seul moyen de débrancher l'appareil totalement de l'alimentation secteur. Pour être certain que l'appareil n'est plus alimenté, ce cordon doit être débranché de la prise murale.

Appliquer les consignes suivantes :

- Le matériel relié a demeure au réseau, doit avoir un dispositif de sectionnement facilement accessible qui doit être incorporé à l'extérieur de l'appareil.
- Débrancher le cordon d'alimentation de la prise murale si vous prévoyez de ne pas utiliser l'appareil pendant quelques jours ou plus.
- Pour débrancher le cordon, tirez le par la fiche. Ne tirez jamais sur le cordon proprement dit.
- La prise d'alimentation doit se trouver à proximité de l'appareil et être aisément accessible.
- Ne laissez pas tomber le cordon d'alimentation et ne posez pas d'objets lourds dessus.

Si le cordon d'alimentation est endommagé, débranchez le immédiatement de la prise murale. Il est dangereux de faire fonctionner un appareil avec un cordon endommagé, un câble abîmé peut provoquer un risque d'incendie ou un choc électrique. Vérifier le câble d'alimentation de temps en temps. Contacter votre revendeur ou le service après vente pour un remplacement.

CONNEXIONS : Toutes les entrées et sorties (exceptée l'entrée secteur) sont de type TBTS (Très Basse Tension de Sécurité) définies selon EN 60950.

RÉPARATION ET MAINTENANCE : L'utilisateur ne doit en aucun cas essayer de procéder aux opérations de dépannage, car l'ouverture des appareils par retrait des capots ou de toutes autres pièces constituant les boîtiers ainsi que le dévissage des vis apparentes à l'extérieur, risque d'exposer l'utilisateur à des chocs électriques ou autres dangers. Contacter le service après-vente, votre revendeur ou s'adresser à un personnel qualifié uniquement.

OUVERTURES ET ORIFICES : Les appareils peuvent comporter des ouvertures (aération, fentes, etc...), veuillez ne jamais y introduire d'objets et ne jamais obstruer ses ouvertures. Si un liquide ou un objet pénètre à l'intérieur de l'appareil, débranchez immédiatement l'appareil et faites le contrôler par un personnel qualifié avant de le remettre en service.

Allo scopo di capire meglio il funzionamento di questa apparecchiatura vi consigliamo di leggere bene tutti i consigli di sicurezza e di funzionamento prima dell'utilizzo. Conservare le istruzioni di sicurezza e di funzionamento al fine di poterle consultare ulteriormente. Seguire tutti i consigli indicati su questo manuale e sull'apparecchiatura.

ATTENZIONE: Al fine di prevenire qualsiasi rischio di shock elettrico e d'incendio, non esporre l'apparecchiatura a pioggia, umidità e a sorgenti di eccessivo calore.

INSTALLAZIONE: Assicuratevi che vi sia una sufficiente circolazione d'aria per evitare qualsiasi surriscaldamento all'interno dell'apparecchiatura. Non collocare l'apparecchiatura in prossimità o su superfici tessili suscettibili di ostruire il funzionamento della ventilazione. Non installate l'apparecchiatura in prossimità di sorgenti di calore come un radiatore o una fuoruscita d'aria calda, né in un posto esposto direttamente ai raggi del sole, a polvere eccessiva, a vibrazioni o a shock meccanici. Ciò potrebbe provocare un erroneo funzionamento e un incidente.

ALIMENTAZIONE: Far funzionare l'apparecchiatura solo con la sorgente d'alimentazione indicata sull'apparecchiatura. Le apparecchiature queste devono essere obbligatoriamente collegate su una sorgente fornita di una efficiente messa a terra. In nessun caso questo collegamento potrà essere modificato, sostituito o eliminato.

CAVO DI ALIMENTAZIONE: Gli apparecchi con un interruttore (commutatore) generale (Accesso I: Speuto 0), accendere ou spagnere l'apparecchio si fa usando l'interruttore.

Attenzione: il cavo di alimentazione è il solo modo di disconnettere l'apparecchio dell'alimentazione. Per assicurarsi che totalmente l'apparecchio non è più collegato, il cavo deve essere disconnesso della presa murale.

Seguire le istruzioni seguenti:

- Il materiale collegato a residenza alla rete, deve avere un dispositivo di sezionamento facile da raggiungere e che deve essere inserito all'esterno del apparecchio.
- Disconnettere l'apparecchiatura dalla presa murale se si prevede di non utilizzarla per qualche giorno.
- Per disconnettere il cavo tirare facendo forza sul connettore.
- La presa d'alimentazione deve trovarsi in prossimità dell'apparecchiatura ed essere facilmente accessibile.
- Non far cadere il cavo di alimentazione né appoggiarci sopra degli oggetti pesanti.

Se il cavo di alimentazione é danneggiato, spegnere immediatamente l'apparecchiatura. E' pericoloso far funzionare questa apparecchiatura con un cavo di alimentazione danneggiato, un cavo graffiato può provocare un rischio di incendio o uno shock elettrico. Verificare il cavo di alimentazione spesso. Contattare il vostro rivenditore o il servizio assistenza per una sostituzione.

CONNESSIONE: Tutti gli ingressi e le uscite (eccetto l'alimentazione) sono di tipo TBTS definite secondo EN 60950.

RIPARAZIONI E ASSISTENZA: L'utilizzatore non deve in nessun caso cercare di riparare l'apparecchiatura, poiché con l'apertura del coperchio metallico o di qualsiasi altro pezzo costituente la scatola metallica, nonché svitare le viti che appaiono esteriormente, poiché ciò può provocare all'utilizzatore un rischio di shock elettrico o altri rischi.

APERTURE DI VENTILAZIONE: Le apparecchiature possono comportare delle aperture di ventilazione, si prega di non introdurre mai oggetti o ostruire le sue fessure. Se un liquido o un oggetto penetra all'interno dell'apparecchiatura, disconnetterla e farla controllare da personale qualificato prima di rimetterla in servizio.

SICHERHEITSHINWEISE

Um den Betrieb dieses Geräts zu verstehen, raten wir Ihnen vor der Inbetriebnahme alle Sicherheits- und Betriebsanweisungen genau zu lesen. Diese Sicherheits- und Betriebsanweisungen für einen späteren Gebrauch sicher aufbewahren. Alle in den Unterlagen, an dem Gerät und hier angegebenen Sicherheitsanweisungen einhalten.

ACHTUNG: um jegliches Risiko eines Stromschlags oder Feuers zu vermeiden, das Gerät nicht Regen, Feuchtigkeit oder intensiven Wärmequellen aussetzen.

EINBAU: Eine ausreichende Luftzufuhr sicherstellen, um jegliche Überhitzung im Gerät zu vermeiden. Das Gerät nicht auf und in Nähe von Textiloberflächen, die Belüftungsöffnungen verschließen können, aufstellen. Das Gerät nicht in Nähe von Wärmequellen, wie z.B. Heizkörper oder Warmluftkappe, aufstellen und es nicht dem direkten Sonnenlicht, übermäßigem Staub, Vibrationen oder mechanischen Stößen aussetzen. Dies kann zu Betriebsstörungen und Unfällen führen.

STROMVERSORGUNG: Das Gerät nur mit der auf dem Gerät bezeichnete Stromquelle betreiben. Gerät mit geerdeter Hauptstromversorgung muss an eine Stromquelle mit effizienter Erdung angeschlossen werden. Diese Erdung darf auf keinen Fall geändert, umgangen oder entfernt werden.

NETZKABEL: Da die Geräte über einen Hauptschalter (An / Aus 0) verfügen, erfolgt die Stromversorgung und -unterbrechung über diesen Hauptschalter.

Achtung: Das Netzkabel stellt die einzige Möglichkeit dar, das Gerät vollständig vom Netzanschluss zu trennen. Um sicherzustellen, dass das Gerät nicht mehr versorgt wird, muss dieses Kabel aus der Netzsteckdose ausgesteckt werden.

Bitte beachten Sie die folgenden Hinweise:

- Wenn Geräte dauerhaft am Netz bleiben, müssen sie über eine leicht zugängliche Trennvorrichtung verfügen, die außen am Gerät angebracht sein muss.
- Das Kabel mittels dem Stecker herausziehen. Niemals am Stromkabel selbst ziehen.
- Die Steckdose muß sich in der Nähe des Geräts befinden und leicht zugänglich sein.
- Das Stromkabel nicht fallen lassen und keine schweren Gegenstände auf es stellen.

Wenn das Stromkabel beschädigt ist, das Gerät sofort abschalten. Es ist gefährlich das Gerät mit einem beschädigten Stromkabel zu betreiben; ein abgenutztes Kabel kann zu einem Feuer oder Stromschlag führen. Das Stromkabel regelmäßig untersuchen. Für den Ersatz, wenden Sie sich an Ihren Verkäufer oder Kundendienststelle.

ANSCHLÜSSE: Bei allen Ein- und Ausgängen (außer der Stromversorgung) handelt es sich, gemäß EN 60950, um Sicherheits Kleinspannungsanschlüsse.

REPARATUR UND WARTUNG: Der Benutzer darf keinesfalls versuchen das Gerät selbst zu reparieren, die Öffnung des Geräts durch Abnahme der Abdeckhaube oder jeglichen anderen Teils des Gehäuses sowie die Entfernung von außen sichtbaren Schrauben zu Stromschlägen oder anderen Gefahren für den Benutzer führen kann. Wenden Sie sich an Ihren Verkäufer, Ihre Kundendienststelle oder an qualifizierte Fachkräfte.

ÖFFNUNGEN UND MUNDUNGEN: Die Geräte können über Öffnungen verfügen (Belüftung, Schlitze, usw.). Niemals Gegenstände in die Öffnungen einführen oder die Öffnungen verschließen. Wenn eine Flüssigkeit oder ein Gegenstand in das Gerät gelangt, den Stecker herausziehen und es vor einer neuen Inbetriebnahme von qualifiziertem Fachpersonal überprüfen lassen.

Para comprender mejor el funcionamiento de este aparato, le recomendamos que le acudadosamente todas las consignas de seguridad y de funcionamiento del aparato antes de usarlo. Conserve las instrucciones de seguridad y de funcionamiento para que pueda consultarlas posteriormente. Respete todas las consignas indicadas en la documentación, relacionadas con el producto y este documento.

CAUIDADO: Para prevenir cualquier riesgo de choque eléctrico y de incendio, no exponga este aparato a la lluvia, a la humedad ni a fuentes de calorintensas.

INSTALACIÓN: Cerciórese de que haya una circulación de aire suficiente para evitar cualquier sobrecalentamiento al interior del aparato. No coloque el aparato cerca ni sobre una superficie textil que pudiera obstruir los orificios de ventilación. No instale el aparato cerca de fuentes de calor como radiador o boca de aire caliente, ni en un lugar expuesto a los rayos solares directos o al polvo excesivo, a las vibraciones o a los choques mecánicos. Esto podría provocar su mal funcionamiento o un accidente.

ALIMENTACIÓN: Ponga a funcionar el aparato únicamente con la fuente de alimentación que se indica en el aparato. Los aparatos deben estar conectados obligatoriamente a una fuente equipada con una puesta a tierra eficaz. Por ningún motivo este enlace de tierra deberá ser modificado, cambiado o suprimido.

CABLE DE ALIMENTACIÓN: Los equipos incluyan interruptor general de alimentación (Encender I / Apagar 0), la puesta en marcha o desconexión se realiza por medio de este interruptor.

El cable de alimentación constituye el único medio de desconectar el aparato totalmente de la red eléctrica. Para estar seguro de que el aparato no está más alimentado, este cable debe de ser desconectado de la toma de corriente.

Aplicar las siguientes consignas:

- El material conectado a residencia a la red informática, debe de tener un dispositivo de seccionamiento fácilmente accesible que debe de ser incorporado al exterior del aparato.
- Desconectar el aparato del enchufe mural si no piensa utilizarlo durante varios días.
- Para desconectar el cable, tire de la clavija. No tire nunca del cable propiamente dicho.
- El enchufe de alimentación debe estar cerca del aparato y ser de fácil acceso.
- No deje caer el cable de alimentación ni coloque objetos pesados encima de él.

Si el cable de alimentación sufriera algún daño, ponga el aparato inmediatamente fuera de tensión. Es peligroso hacer funcionar este aparato con un cable averiado, ya que un cable dañado puede provocar un incendio o un choque eléctrico. Verifique el estado del cable de alimentación de vez en cuando. Póngase en contacto con su distribuidor o con el servicio de posventa si necesita cambiarlo.

CONEXIONES: Todas las entradas y salidas (excepto la entrada del sector) son de tipo TBTS (Muy Baja Tensión de Seguridad) definidas según EN 60950

REPARACIÓN Y MANTENIMIENTO: Por ningún motivo, el usuario deberá tratar de efectuar operaciones de reparación, ya que si abre los aparatos retirando el capó o cualquier otra pieza que forma parte de las cajas o si destornilla los tornillos aparentes exteriores, existe el riesgo de producirse una explosión, choques eléctricos o cualquier otro incidente. Contacte el servicio de posventa, a su distribuidor o dirigirse con personal cualificado únicamente.

ABERTURAS Y ORIFICIOS: Los aparatos pueden contener aberturas (aireación, ranuras, etc.). No introduzca allí ningún objeto ni obstruya nunca estas aberturas. Si un líquido o un objeto penetra al interior del aparato, desconéctelo y hágalo revisar por personal cualificado antes de ponerlo nuevamente en servicio.

2-2. UNPACKING AND INSPECTION

- 1 x **Smart Vu** seamless scaler/switcher
- 1 x Power supply cord
- 1 x HD15 to 5 BNC cable
- 1 x Ethernet cross cable (for device update)
- 1 x Set of 3 audio 5 pin screw terminals
- 1 x RCS - Remote Control Software - (PC only) *
- 1 x User manual (PDF version) *
- 1 x Quick Start **Guide** (PDF version) *

* Download on our website: www.analogway.com/

2-3. RACKMOUNT INFORMATION

Tabletop mounting: the **Smart Vu** can be used directly on a table, the unit is equipped with 4 handy anti-slip rubber feet.

Rack mounting: the **Smart Vu** is compatible with a 19" enclosure. Please follow the instructions below to install the device in a 19" rack.

Place the device in your rack. Attach the device to the rack by using 4 screws through the front panel holes (screws not included).

Rear fixing is also recommended, in particular for permanent installations. The **Smart Vu** is equipped with drill holes designed for compatibility with most rackmount braces.

Connect all of the cables of the device and attach them to the rack with the help of tie wraps.

IMPORTANT:

- The openings in the side and rear panels of the device are for cooling. Do not cover these openings to avoid cutting air circulation.
- Be sure that no weight in excess of 2 kg (4.4 Lbs.) is added onto the **Smart Vu**.
- The maximum ambient operating temperature should not exceed 40 °C (104°F)
- The rack and all mounted equipment in it must be reliably grounded according to national and/or local electrical standards.



Dismantling front handles of the device could invalidate warranty on after sales services of your **Smart Vu**. It is strongly advised to avoid using front handles as rests for your **Smart Vu**, they are designed for manipulation purposes only.

If required, front handles of the device can be dismantled, but with caution. The original screws removed must not be reintroduced to their location without handles in place. Substantial damages can occur, including risk of electric shock from the main voltage. Only M4x12mm screws can be used. They are supplied with the unit.

2-4. CABLE AND ADAPTOR INFORMATION

A large choice of cables and adaptors are compatible with the **Smart Vu**. To find which are to be used in your setup, please refer to the Hardware Specifications chapter. Please contact your distributor for a list of available cables and connectors for your **Smart Vu**.

2-5. HARDWARE SPECIFICATIONS

Input specifications

• ANALOG COMPUTER:

Connectors: Inputs 1-4: female HD15. DVI Input 1: female DVI-I (analog pins).

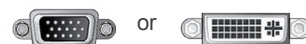
Line frequency: Up to 130 kHz (165 MHz Max pixel rate).

Resolution: Up to 1600x1200 @ 165Mhz, 1920x1200px (RB, Max V size: 1200px, Max H size 2048px).

Sync. types: RGBHV, RGB/S, RGsB (Sync On Green).

Levels: R, G, B = 0.7 Vp/p.
H & V Sync = TTL
Composite Sync = TTL and 0.3 V (negative).
SOG (Sync On Green) = 0.3 V.

Impedance: R, G, B = 75 ohms.
H = 75 ohms or Hi-Z.
V = Hi-Z.



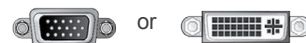
• RGB/S - RGsB VIDEO:

Connectors: Inputs 1-4: female HD15. DVI Input 1: female DVI-I (analog pins).

Frequency: 15.625 kHz - 50 Hz (625 lines).
15.734 kHz - 60 Hz (525 lines).

Levels: R, G, B = 0.7 Vp/p.
SYNC. = 0.3 Vp/p or TTL (negative).

Impedance: RGB = 75 ohms.
SYNC. = 75 ohms or Hi-Z.



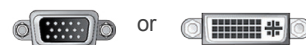
• COMPONENT:

Connectors: Inputs 1-4: female HD15. DVI Input 1: female DVI-I (analog pins).

Frequency: 15.625 kHz - 50 Hz (625 lines).
15.734 kHz - 60 Hz (525 lines).

Levels: Y = 1 Vp/p (0.7 V Luma + 0.3 V Sync.).
Cr / Pr & Cb / Pb = 0.7 Vp/p.

Impedance: 75 ohms.



• HDTV - HD-YUV:

Connectors: Inputs 1-4: female HD15. DVI Input 1:
female DVI-I (analog pins).
Formats: 720p/576p (60Hz), 1080i (50/60Hz), EDTV.
Levels: Y = 1 Vp/p (0.7 V + sync.).
Cr / Pr & Cb / Pb = 1 Vp/p (0.7 V + sync.).
Sync.: Tri-level: $\pm 0.3V$ (positive/negative).
Bi-level: 0.3V (negative).
Impedance: 75 ohms.



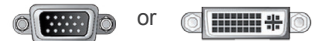
• S.VIDEO:

Connectors: Inputs 1-4: female HD15. DVI Input 1:
female DVI-I (analog pins).
Standard: PAL/SECAM: 15.625 kHz - 50Hz - 625 lines.
NTSC (3.58 - 4.43 MHz) : 15.734 kHz/60Hz/525 lines.
Levels: Y = 1 Vp/p (0.7 V Luma + 0.3 V Sync.).
C = 0.3 Vp/p (Chroma Burst).
Impedance: 75 ohms.



• COMPOSITE VIDEO:

Connectors: Inputs 1-4: female HD15. DVI Input 1:
female DVI-I (analog pins).
Standard: PAL / SECAM: 15.625 kHz - 50 Hz - 625 lines. NTSC (3.58 - 4.43 MHz) : 15.734 kHz/60Hz/525 lines.
Level: 1 Vp/p (0.7 V Luma + 0.3 V Sync.).
Impedance: 75 ohms.



• DVI (Digital Video Interface):

Connector: DVI Input 1: female DVI-D (digital pins).
Line frequency: Up to 130 kHz (165 MHz Max pixel rate).
Format: Digital Visual Interface (DVI)-TMDS single link.
Resolution: Up to 1600x1200 @ 165Mhz, 1920x1200px (RB, Max V size : 1200px, Max H size 2048px).



• SD-SDI:

Connector: SDI Inputs #1 to #2: female BNC.
Formats: SMPTE 259M
Data rate: 270 Mbps serial digital.
Impedance: 75 ohms.



• 3G/HD-SDI:

Connector: SDI Inputs 1-2 : female BNC.
Formats: 720p @ 50, 59.94 & 60 Hz
1035i @ 50, 59.94 & 60 Hz
1080i @ 50, 59.94 & 60 Hz
1080p @ 23.97, 24, 25, 29.97, 30, 50, 59.94, 60 Hz.
1080sF @ 50, 59.94 & 60 Hz.
Data rate: 1.5 Gbps serial digital (Level A).
Impedance: 75 ohms.



Output specifications

• ANALOG OUTPUTS

Connector: Outputs #1 (Main) & #2 (Preview): female HD15, DVI-I (analog pins).



Resolutions:

Format	Ratio	Available Refresh Rates
640 x 480	4 : 3	50Hz 60Hz 72Hz 75Hz
800 x 600	4 : 3	50Hz 60Hz 72Hz 75Hz
848 x 480	16 : 9	50Hz 60Hz 72Hz 75Hz
1024 x 768	4 : 3	50Hz 60Hz 72Hz 75Hz
1280 x 720	16 : 9	50Hz 60Hz
1280 x 768	15 : 9	50Hz 60Hz 72Hz 75Hz
1280 x 800	16 : 10	50Hz 60Hz 72Hz 75Hz
1280 x 1024	5 : 4	50Hz 60Hz 72Hz 75Hz
1360 x 768	16 : 9	50Hz 60Hz 72Hz 75Hz
1366 x 768	16 : 9	50Hz 60Hz 72Hz 75Hz
1366 x 800	15 : 9	50Hz 60Hz 72Hz 75Hz
1400 x 1050	4 : 3	50Hz 60Hz 72Hz 75Hz
1440 x 900	16 : 10	50Hz 60Hz 72Hz 75Hz
1600 x 1200	4 : 3	50Hz 60Hz
1680 x 1050	16 : 10	50Hz 60Hz
1920 x 1080	16 : 9	50Hz 60Hz
1920 x 1080 B	16 : 9	50Hz 60Hz
1920 x 1200	16 : 10	50Hz 60Hz
2048 x 1080	19 : 10	50Hz 60Hz

Signals: RGBHV, RGBS and RGsB.
 Levels: R, G, B = 0.7 Vp/p.
 Sync.: Separate H & V = TTL (negative).
 Composite = TTL (negative).
 SOG = 0.3 Vp/p (negative).
 Impedance: R, G, B = 75 ohms.

• DVI (Digital Video Interface) OUTPUTS:

Connector: Outputs #1 (Main) & #2 (Preview): female DVI-I (digital pins).
 Signal: Digital Visual Interface (DVI)-TMDS single link.



Resolutions:

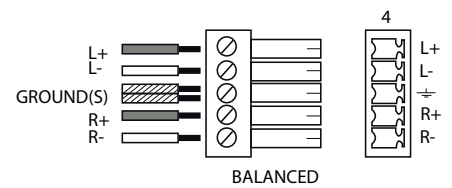
Format	Ratio	Available Refresh Rates
640 x 480	4 : 3	50Hz 60Hz 72Hz 75Hz
800 x 600	4 : 3	50Hz 60Hz 72Hz 75Hz
848 x 480	16 : 9	50Hz 60Hz 72Hz 75Hz
1024 x 768	4 : 3	50Hz 60Hz 72Hz 75Hz
1280 x 720	16 : 9	50Hz 60Hz
1280 x 768	15 : 9	50Hz 60Hz 72Hz 75Hz
1280 x 800	16 : 10	50Hz 60Hz 72Hz 75Hz
1280 x 1024	5 : 4	50Hz 60Hz 72Hz 75Hz
1360 x 768	16 : 9	50Hz 60Hz 72Hz 75Hz
1366 x 768	16 : 9	50Hz 60Hz 72Hz 75Hz
1366 x 800	15 : 9	50Hz 60Hz 72Hz 75Hz
1400 x 1050	4 : 3	50Hz 60Hz 72Hz 75Hz
1440 x 900	16 : 10	50Hz 60Hz 72Hz 75Hz
1600 x 1200	4 : 3	50Hz 60Hz
1680 x 1050	16 : 10	50Hz 60Hz
1920 x 1080	16 : 9	50Hz 60Hz
1920 x 1080 B	16 : 9	50Hz 60Hz
1920 x 1200	16 : 10	50Hz 60Hz
2048 x 1080	19 : 10	50Hz 60Hz

• AUDIO OUTPUT:

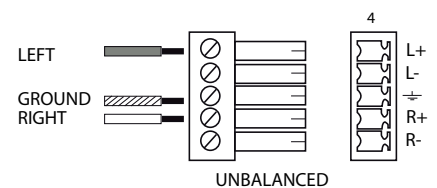
Connector: Outputs #1 (Main):
 Balanced or unbalanced mono/stereo output (on 5-pin MCO male connector).

Vo max: Unbalanced = +15dBu (at 300Ω load).
 Balanced = +21 dBu (at 600Ω load).
 Zo = 600 Ω balanced.
 Zo = 300 Ω unbalanced.
 G = 0 dB nominal.

Balanced connection



Unbalanced connection



Communication specifications

• COMMUNICATION PORTS:

REMOTE RS232

Connector: DB 9 female
Level: RS232.
Data Rate: 9600 Bauds, 8 data bits, 1 stop bit, no parity bit, no flow control for normal. DTR & RTS needed for upgrade.



• LAN:

Connector : RJ45
Protocol: TCP (Transmission Control Protocol) or UDP (User Datagram Protocol).
Ethernet: Base 10/100



Environmental specifications

PHYSICAL

Dimensions: W 482 x D 350 x H 45 mm
19"W x 13.8"D x 1.8"H.
(Compatible with a Standard 19" rack, Height = 1 U).

Weight: 4.3 kg / 9.5 lbs.

ENVIRONMENTAL

Cooling air flow from right side to left side
Maximum ambient operating temperature: < 40 °C (< 104°F).
Operating temperature: 0 to 40 °C / +32 ° to +104 °F
Storage temperature: -40 to 70 °C / -40° to +158 °F
Operating humidity: 10 to 80% (non condensing)
Input voltage range: 100-240 VAC, 50/60 Hz
Typical consumption: 90 W (with option)



CERTIFICATIONS

CE Compliancy: test following
- EN 55022: 2006 / A1: 2007,
- EN 55024: 1998 / A1: 2001 / A2: 2003,
- EN 61000-3-2: 2006
- EN 61000-3-3: 1995 / A1: 2001 / A2: 2005,
Safety : test following: - IEC 60950-1: 2005
- UL 60950-1: 2007
- CAN/CSA-C22.2 NO. 60950-1
Power supply: IEC/EN/UL/CSA 60950-1, internal, autoswitchable
Mechanical (in carton): Vibration: IEC60068-2-64
Free fall: IEC60068-2-32, RoHS, WEEE

Pin outs

• VGA

Standard VGA

1- Red	6- Red Return	11- ID Bit 0
2- Green	7- Green Return	12- ID Bit 1
3- Blue	8- Blue Return	13- H Sync
4- ID Bit 2	9- No Pin	14- V Sync
5- Test (Gnd)	10- Sync Return	15- ID Bit 3



• DIGITAL VISUAL INTERFACE DVI

Pin

1- TMDS Data 2-	7- DDC Data	13- Not used	19- TMDS Data 0 Shield
2- TMDS Data 2+	8- Analog Vertical Sync	14- +5V (Power)	20- Not used
3- TMDS Data 2 Shield	9- TMDS Data 1-	15- Ground for (+5V)	21- Not used
4- Not used	10- TMDS Data 1+	16- Hot Plug Detect.	22- TMDS Clock Shield
5- Not used	11- TMDS Data 1 Shield	17- TMDS Data 0-	23- TMDS Clock +
6- DDC Clock	12- Not used	18- TMDS Data 0+	24- TMDS Clock-

- C1- Analog Red Video (or Cr/Pr or C)
- C2- Analog Green Video (or Y or Composite Video)
- C3- Analog Blue Video (or Cb/Pb)
- C4- Analog Horizontal Sync (or Composite Sync)
- C5- Analog Common Ground Return

DDC = Display Data Channel

TMDS = Transition Minimized differential signal



• RS-232 CONNECTOR

Pin

1- NC	6- NC
2- Transmit data to PC (Tx1)	7- NC
3- Receive data from PC (Rx1)	8- NC (or +12V. dc)
4- NC	9- NC
5- Ground	



• VESA DDC

Pin

1- Red	7- Green Return	13- H Sync
2- Green	8- Blue Return	14- V Sync
3- Blue	9- DDC+5 Volt supply	15- Data Clock (SCL)
4- ID Bit 2	10- Sync Return	
5- Test	11- ID Bit	
6- Red Return	12- Bi-directional data (SDA)	



HDCP compliance

If you want to use HDCP (*High Definition Copy Protection*) content from your sources, be sure plugging HDCP compliant screens or projectors. If it's not the case, the output image could be disabled.

When displaying HDCP protected sources on non HDCP compliant equipment, the following message will be displayed on the device VFD screen:

“Due to HDCP content, non HDCP screens cannot display protected sources”

Screen will go to black without displaying the HDCP input image, or partially layer out non HDCP content.

Concerning the DVI inputs, a specific feature allows enable/disable the HDCP receiver for the input chosen.

It can be very useful especially using a Mac:

Input Menu > DVI# > HDCP detection

The output status can provide you all information about the output in real time.

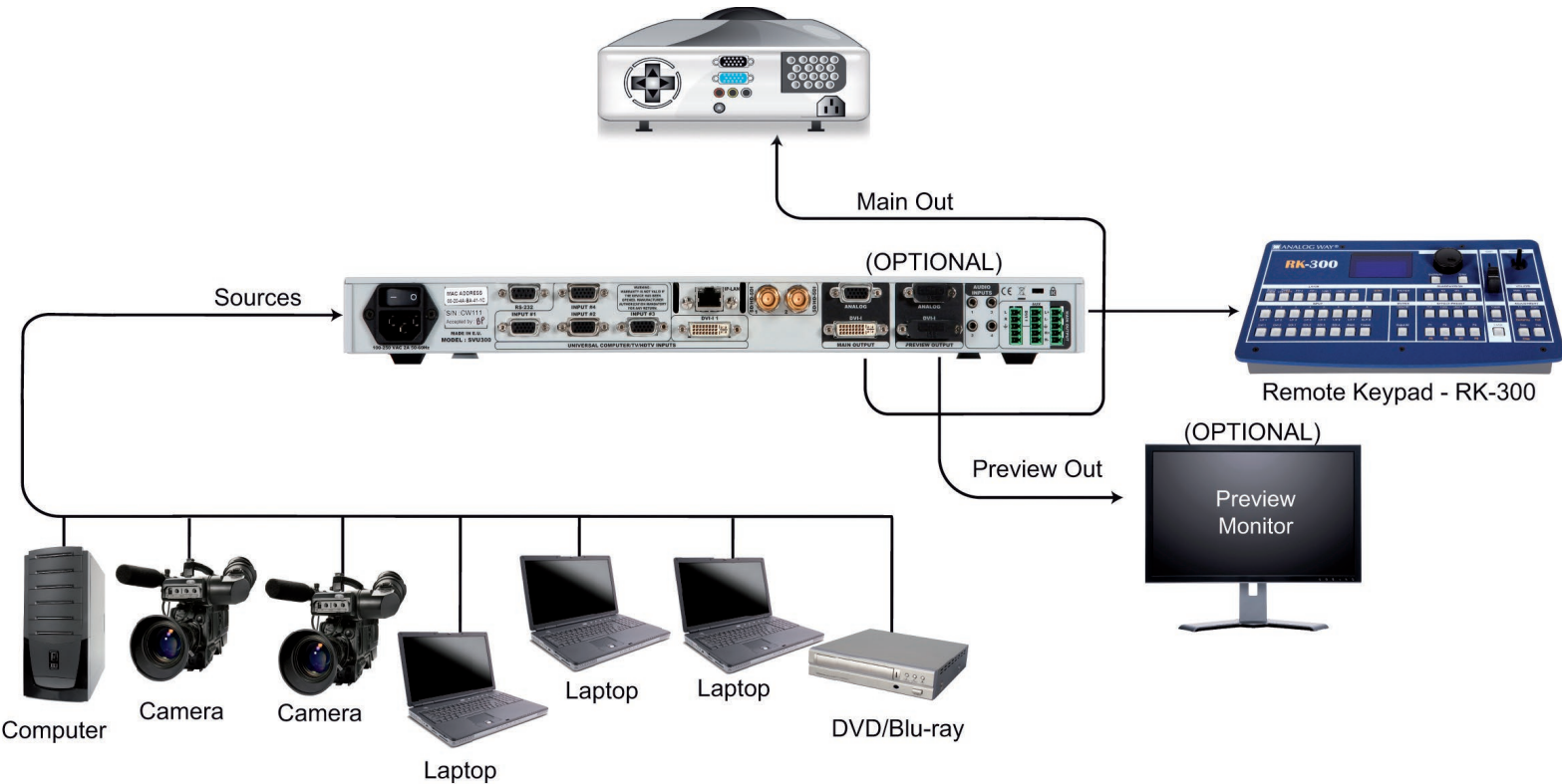
This feature is particularly needed when HDCP is used with long cable to be sure that the communication is well handled.



NOTE: as part of our policy of continuous improvement, Analog Way reserves the right to make design and specification changes for product improvements without prior notice. The performance specification figures indicated are nominal values of production units. There may be some deviations from these values in individual units.

3-1. CONNECTING THE Smart Vu

The **Smart Vu** can be set up with up to 7 different sources, and will drive up to 1 digital DVI-D source, 2 SD-SDI sources and 4 analog computer/video sources simultaneously. The versatility of the **Smart Vu** will allow for almost any event configuration and cater for all your projection needs. The intuitive rear panel of the **Smart Vu** will let you set up for the first time quickly and easily. Here is an example of a typical **Smart Vu** setup.



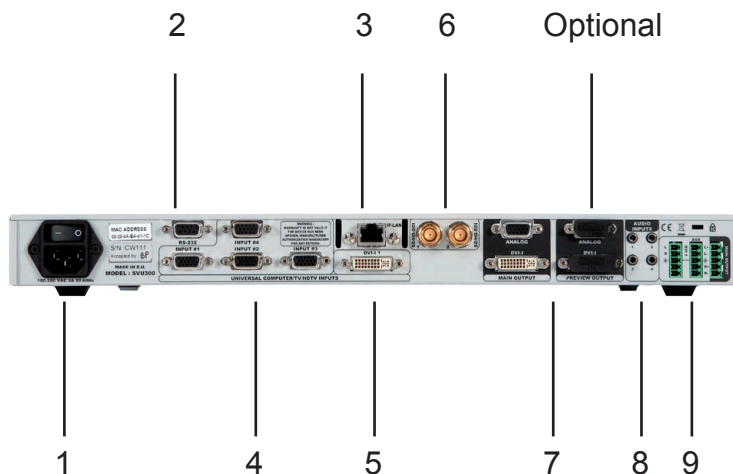
3-2. THE SVU300 REAR PANEL

Overview

The **Smart Vu** rear panel is equipped with 4 universal digital and analog inputs. Inputs #1 through #4 (4) are universal analog inputs. Input #5 is only a DVI-D signal. The Main and Preview (7) outputs will allow for the **Smart Vu** high resolution digital and analog signals to be viewed on screen and/or on a preview monitor (see also Output Specifications in this chapter).

Finally, the audio in and output card will let users trigger audio with any source, accurately balance or tweak sound sources and outputs.

- 1 : AC outlet and On/off switch
- 2 : RS232 connector
- 3 : IP-LAN connector
- 4 : Universal Analog inputs
- 5 : DVI-D input
- 6 : HD-SDI inputs
- 7 : Main and Preview outputs (Preview Out optional)
- 8 : Audio inputs
- 9 : Audio outputs

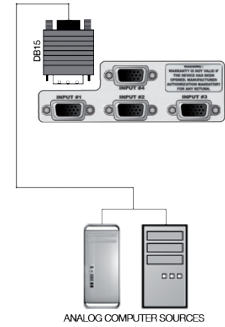


Inputs #1 to #5

UNIVERSAL COMPUTER & VIDEO INPUTS:

Universal Inputs accept computer sources (RGBHV, RGBS, and RGsB (SOG) signals), standard TV/VIDEO sources (Composite video, S.VIDEO), Component video (YUV, RGBS & RGsB (SOG)), and HDTV sources (480p, 720p & 1080i).

HD15 : 1 x Universal Analog input on female HD15 connector.



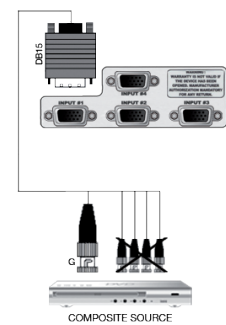
COMPUTER SOURCES:

The device accepts the following computer signals : RGBHV, RGB/S, and RGsB on inputs 1-4 and DVI input 1.

COMPOSITE VIDEO SOURCES:

The Composite Video signal, usually called COMPOSITE or VIDEO, is available on most video equipment (VCR, DVD, CAMCORDER...), but is also the lowest in picture quality. The video standard of this signal can be NTSC, PAL or SECAM. The signal is transmitted on a single coaxial cable, and is connected to the video equipment with an HD15 connector.

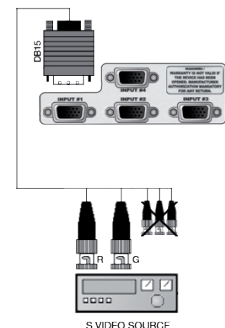
For inputs 1-4 : connect a 1 x BNC from your composite source, to the HD15 input of the device.



S.VIDEO SOURCES:

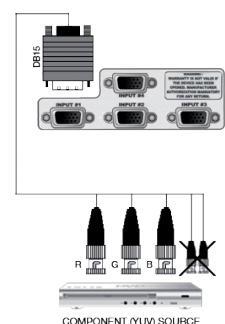
The S.VIDEO signal, also called Y/C, HI-8™, or S.VHS™, is available on DVD players and high quality VCRs (S.VHS). The S.VIDEO signal in which the Luminance (Y) and Chrominance (C) information are separately transmitted, gives a higher quality picture than the Composite video signal. The S.VIDEO connector is usually a 4 pin Mini-DIN connector also called Oshiden™ connector.

For inputs 1-4 : connect a 2 x BNC from your S.VIDEO, Y (G/Y) & C (R/R-Y), to the HD15 input of the device.



COMPONENT VIDEO SOURCES:

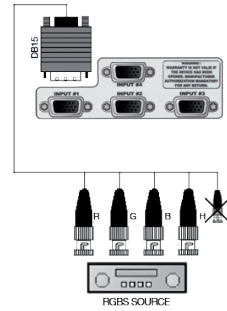
The Component Video signal, also called YUV (Y, Pr, Pb) or BETACAM™ is widely used in broadcasting and is available on high-quality DVD players. The COMPONENT signal is transmitted with 3 coaxial cables, and also has a better quality picture than COMPOSITE and S.VIDEO signals. The COMPONENT connectors are usually RCA (x3), or BNC (x3). For inputs 1-4 : connect a HD15 to 3 x BNC cable between the HD15 connector of the device and your Component source.



RGBS VIDEO SOURCES:

This signal is widely used in broadcasting and is available on European DVD player. The RGB/S signal is transmitted with 4 coaxial cables, and also has a better picture quality than COMPOSITE and S.VIDEO signals. The RGB/S connectors are usually BNC connectors for Broadcasting equipment, and SCART connector for DVD players.

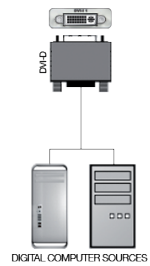
For inputs 1-4 : connect a HD15 to 4 x BNC cable between the HD15 connector of the device and your RGB/S source.



DVI Input #1

DVI-D:

DVI Input on the **Smart Vu** accept up to 1 live source in Digital format. DVI-D: 1 x digital (DVI).

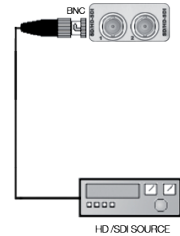


SD/HD-SDI Inputs #1 & #2

SD/HD-SDI SOURCES:

SD/HD-SDI Inputs 1- 2 on the **Smart Vu** accept up to 2 live sources in Digital formats.

SD/HD-SDI: 1 x digital input on female BNC connector.



Preview Outputs

PREVIEW OUTPUT:

ANALOG: 1 x analog output for the main display device on female HD15 connector.

DIGITAL/ANALOG: 1 x main output on female DVI-I connector (simultaneous analog and digital).



Main Outputs

MAIN OUTPUT:

ANALOG: 1 x analog output for the main display device on female HD15 connector.

DIGITAL/ANALOG: 1 x main output on female DVI-I connector (simultaneous analog and digital).



AUDIO SWITCHER:

Audio Stereo Switcher card features 6 inputs and 2 outputs. An additional auxiliary input can be mixed with any other input. Master Volume and individual input level can be adjusted. Each input and output offers balanced or unbalanced connections. It should be noted that the management of the audio output follows the position of video layers. Two modes are available: Top Follow or Breakaway. In Top Follow Mode, the audio follows the topmost video layer (after having pressed TAKE). In Breakaway Mode it is the selected audio layer input that is permanently diffused.

The **Smart Vu** allows to work with up to 5 stereo inputs, 1 auxiliary and 2 embedded SDI audio inputs (Via the SDI connectors).



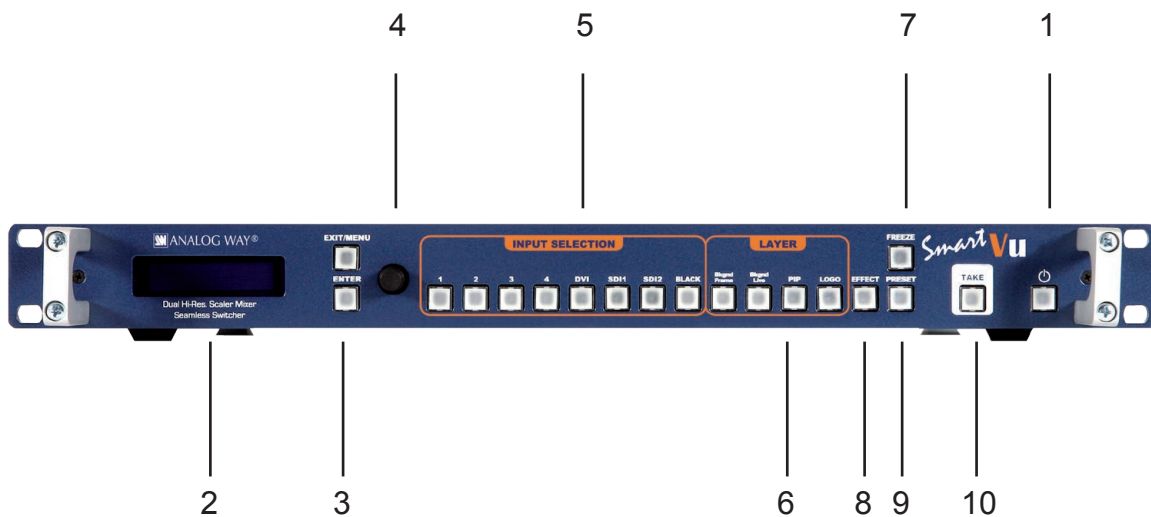
4-1. THE SVU300 FRONT PANEL

Overview

The highly intuitive front panel of the **Smart Vu** was designed by Analog Way engineers to simply and quickly meet all of your event needs. Within minutes, you will be able to enjoy its full potential and easily parameter most of its functions, without having to be an expert audio-visual engineer, leaving room for what is most important to our users : concentrating on their event.

The **Smart Vu** front panel is comprised of several sections, each carefully labeled and self explanatory, corresponding to all the machine's versatile functions.

- 1: Standby button
- 2: Menu screen
- 3: Menu Control section
- 4: Menu scroll knob
- 5: Input Selection section
- 6: Layer Selection section
- 7: Freeze button
- 8: Effect button
- 9: Preset button
- 10: Take button



Standby button

The STANDBY button allows users to put the **Smart Vu** into sleep mode, and startup again. The STANDBY button does not replace the ON/OFF switch at the rear of the unit, and is implemented essentially for ease of use in rackmount situations.

Menu section

The Menu Screen of the **Smart Vu** is the visual interface to your **Smart Vu** menu. It gives users a constant indication of available menu options, parameters of any selected object, system information, and everything you need to know to control the device.

The Menu scroll knob allows users to quickly scroll through menu items and increase or decrease any modifiable value in the **Smart Vu** menu. Simply scroll to the desired menu item, and press the ENTER button to confirm your choice.

The EXIT/MENU button and the ENTER button in the Control section of the **Smart Vu**, allow users to respectively enter and exit the SmartVu menu, and confirm selected menu items.

Input selection section

The Input Selection section allows to select which input (1-7) to display in a selected layer. Select one of 7 simultaneous inputs, (4 analog inputs, 1 DVI-D input, 2 SDI inputs) by simply pressing one of the Input buttons.

When pressed, the BLACK button allows users to remove layer content on screen.

Layer selection

The Layer Selection section allows to select which type of layer to work with : Background Frame (non positionable, non resizable static background), Background Live (non positionable, non resizable animated background), a PIP (positionable, sizable floating window), or a Logo (positionable, key sensitive layer).

* NOTE * : available only on **Smart Vu** with the Logo/Frame option installed.

The **Smart Vu** BACKGROUND FRAME button will allow you to select the source you wish to use as a frame, and will automatically display the *Layer* menu on your VFD screen.

The **Smart Vu** BACKGROUND LIVE button will allow you to select the source you wish to use as a live background, and will automatically display the *Layer* menu on your VFD screen.

The PIP button of the **Smart Vu** allows users to freeze the Main output current display or the active layer, depending on the freeze mode: Freeze All, freezes all visible layers, Layer Freeze, to freeze the current selected layer.

The **Smart Vu** LOGO button is a handy front panel shortcut to the **Smart Vu** Logos/Frames menu (positionable, key sensitive layer).

Freeze button

The Freeze button of the **Smart Vu** allows users to freeze the Main output current display or the active layer, depending on the freeze mode: Freeze All, freezes all visible layers, Layer Freeze, to freeze the current selected layer.

Effect selection button

The **Smart Vu** EFFECT SELECTION button is a practical front panel shortcut to the **Smart Vu** *Layer Effects* menu (Opening and Closing transitions).

Preset Selection button

The **Smart Vu** PRESET SELECTION button is a practical front panel shortcut to the SmartVu *Preset* menu, and will activate the four available Preset Memories (Input Selection section buttons 1-4).

Take button

The **Smart Vu** TAKE button allows to switch from Preview to Main outputs. By pressing the TAKE button, what you have setup on your preview screen will go live on the Main output display.

4-2. THE Smart Vu MENU

Menu navigation

To access the **Smart Vu** menu, press the EXIT/MENU button in the control section (2). To highlight items in the menu which will appear on the VFD screen (1), turn the scroll knob (4) left or right to the desired menu item. When you have reached the desired menu item, press the ENTER button in the control section (3) to access that menu function. Pressing the ENTER button when a selection has been made sets the value to that selection in the **Smart Vu** memory. When all settings have been made, press the EXIT/MENU button to exit sub-menus and return to the main menu.

* IMPORTANT * : simply selecting a menu item will not set it to that value. Be sure to press the ENTER button when parametering the menu items.



Simply selecting a menu item will not set it to that value. Be sure to press the ENTER button when parametering the menu items or to push the scroll knob.

Home menu

Pressing the [MENU] button in the menu section of the **Smart Vu**, will display and give you access to the following items on the menu VFD screen:

- **INPUT**: select to configure the 7 individual input types and resolutions.
- **MAIN OUT**: select to set the output types and resolutions of the Main output.
- **PREVIEW OUT**: in Mixer mode, select to set the output types and resolutions of the Preview output.
- **PRESET**: select to store and use presets.
- **IMAGE**: select to change source image settings of an input.
- **KEYING/TITLING**: select to access keying and titling controls and parameters.
- **LAYER**: select to adjust layer size, position, border, transparency or transitions.
- **AUDIO**: select to access all audio input and output parameters.
- **CONTROL**: select to access device software information, LAN settings, reset factory settings, amongst other user oriented functions.

4-3. WORKING WITH THE SVU300

Reseting default values

It is strongly recommended resetting all of the default values of your **Smart Vu** unit before setting up your shows and events. To do so, press the EXIT/MENU button and select *Control* in the menu by rotating the corresponding knob. Then press the ENTER button to enter the *Control* sub-menu. Select *Default Values* by rotating the scroll knob, and press the ENTER button to enter your choice to restart your SmartVu with its factory settings. This operation should take approximately 30 seconds.

PLS300 color codes

Analog Way engineers have developed a handy, user friendly way of identifying machine status on the front panel, via the use of color codes on the buttons of the machine. All new Analog Way machines use the same codes, for quick recognition of the status of any device of the range, at any given time.

For the **Smart Vu**, button color codes are as follow :

- Sources on the Main output are indicated in red when active.
- Sources on the Preview output are indicated in green when active.
- Buttons in the layer section turn red or green, depending on whether the selected layer is active in respectively the Main or Preview window.
- Menu buttons are indicated in green.
- Selecting a button with an available source or function will cause that button to blink green on the preview, or red once it is on the Main output.
- TAKE button reacts as follows :

If take function is available, the button will appear in green.
When the take function is active, it will light up red.

Solid red: 	#1 = Source, Layer or Window is on Main #2 = Freeze enable	Blinking red: 	Active Layer or Source for modification on Main
Solid green: 	#1 = Source or Layer is on Preview #2 = Function available for modification #3 = Current output on Matrix Mode	Blinking green: 	Active Layer or Source for modification on Preview

Input selection settings

1/ In the MENU section, press the EXIT/MENU button and select *Input* in the menu by rotating the scroll knob. Then press the ENTER button to enter the *Input* sub-menu.

2/ In the *Input* menu, select the type of input you have plugged into the **Smart Vu** by rotating the scroll knob (see Input Specifications, p.14). Then press the ENTER button to enter the types of inputs connected to the **Smart Vu**.

3/ Press the EXIT/MENU button to return to the main menu.

4/ Repeat steps 1-3 for every source connected to your **Smart Vu**.

Source output selection

Once your inputs have all been configured, the output settings of the **Smart Vu** must be set according to the machines plugged on your **Smart Vu** main and preview outputs (video projector, preview monitor...).

*** NOTE * :** It is strongly recommended to set the output format of the **SVU300** to match the native resolution of the display devices connected to the **SVU300**.

Output selection settings

1/ In the Menu section, press the EXIT/MENU button and select *Output* in the menu by rotating the scroll knob. Then press the ENTER button to enter the *Output* sub-menu.

2/ In the *Output* menu, select the output type, resolution and frequency, to match the viewing hardware plugged into the **Smart Vu**, by rotating the scroll knob (see also Output Specifications p.16). Then press the ENTER button to enter each of the output parameters.

*** NOTE * :** be sure to press the ENTER button to confirm every selected setting, the **Smart Vu**, will revert to its original settings if new choices are not confirmed.

3/ Press the EXIT/MENU button to return to the main menu.

The *Output* menu also allows you to generate test patterns. The test patterns available through the *Output* menu let you quickly and reliably setup your projectors.

1/ In the menu section, press the EXIT/MENU button and select *Output* in the menu by rotating the corresponding knob. Then press the ENTER button to enter the *Output* sub-menu.

2/ In the *Output* sub-menu, select the *Test Pattern* menu, then select the output (Main or Preview) on which you want the test pattern to appear by rotating the scroll knob. Press the ENTER button to enter the *Test Pattern* menu. Choose the test pattern you wish to use in the *Test Pattern* menu by rotating the scroll knob, and press ENTER. The chosen test pattern will immediately appear on the selected screen(s).

3/ Press the EXIT/MENU button twice to return to the main menu.

*** NOTE * : Be sure to turn the test pattern off to display your sources again.**

Working with PIPs

The **SVU300** allows users to manipulate a PIP (Picture In Picture) which you can move, size, crop or zoom, apply transparency or transitions to.

PIP configuration

1/ Press the PIP button. The button will start blinking. On the preview screen, the layer will appear as a color rectangle, and “00” will be indicated in the layer rectangle. Layer parameters will appear on your menu screen once a source has been affected to that layer.

2/ In the Input Selection section, press the source button (#1 to #10) of the source you wish to affect to the selected PIP. The source button will start blinking. On your preview screen, the source will appear in the layer rectangle, and PIP#1 will be indicated in the layer rectangle.

3/ Press the PIP button, then rotate the scroll knob to access desired layer attributes (size, position, zoom, border, transparency...) and press the [ENTER] button in the *Layer* sub-menu to enter and parameter layer attributes.

4/ By pressing the source button again, the *Image* sub-menu appears on your menu VFD screen. Rotate the scroll knob to access the desired source attributes (aspect in/out, color, centering, blanking adjust...) and press the [ENTER] button in the *Image* sub-menu to enter and parameter source attributes.

5/ Press [TAKE] to view the results on your main screen.

Working with Frames

It is possible to store up to 4 frames in the **Smart Vu** non volatile memory with the optional Logo/Frame upgrade installed. Frames are mainly used as backgrounds in a typical show or event setup, and can be recorded from any of the **Smart Vu**' 7 sources and called back at the press of a single button.

*** NOTE * : Frames may be used only one at a time and cannot be placed in a layer.**

Memorizing Frames

1/ In the Input Selection section, press the source button (1-4) of the source you wish to record as a frame. The source button will start blinking. Press the TAKE button to display that source on the main display.

2/ Select Logos/Frames in the menu by rotating the scroll knob, then pressing the ENTER button.

3/ Select *Record Frames* in the *Logo/Frames* menu by rotating the scroll knob, then pressing the ENTER button. A white rectangle will appear on your main display, indicating the frame which will be captured. Select an empty frame memory (empty frames are indicated in the sub-menu) to store the frame into. Press the corresponding ENTER button.

4/ The **Smart Vu** will display a progress status bar on the VFD screen. Your frame is stored when the menu reappears on the VFD screen.

5/ Press the BACKGROUND FRAME button, select the frame number (1-4) you just recorded, and press the TAKE button. Your background frame will appear on your preview output.

*** NOTE * : The Background Frame is the deepest Layer and is behind any other Layer. The Background Frame may be hidden by the Background Live source.**

Working with logos

It is possible to store up to 4 logos in the **Smart Vu** non volatile memory. These can be recorded from any of the **Smart Vu**' 7 sources. Logos have many more attributes than frames. They can be sized, positioned, but also keyed via color cutout selection or luma key.

*** NOTE * : available only on SmartVu with the Logo/Frame option installed.**

Memorizing logos

1/ In the Input Selection section, press the source button (1-7) of the source you wish to record as a logo. The source button will start blinking.

2/ Select the *Logos/Frames* menu by scrolling through the menu with the scroll knob, then pressing the ENTER button.

3/ Select *Record Logos* in the *Logos/Frames* menu by rotating the scroll knob, then pressing ENTER. A small white rectangle will appear on your main display, indicating the logo that will be captured.

4/ Adjust logo size, position, and fine tune key attributes by rotating the scroll knob and pressing ENTER to memorize logo settings.

5/ Select an empty logo memory (empty logos are indicated in the sub-menu) to store the logo into. Press the ENTER button. The **Smart Vu** will display a progress status bar on the VFD screen.

6/ In the Layer Selection section, press the LOGO button, and select logo number (1-4) you wish to use. Your logo will appear on the preview screen above any existing layer on screen.

7/ Press the TAKE button. Your logo will appear on the main display.

Mixer functions

The **Smart Vu** offers a variety of mixer type transitions, including wipes, fades, and cuts. The transitions, transition times and fade/wipe effects can all be setup through the **Smart Vu** Layer menu.

Layer Transitions & effects

The **Smart Vu** offers a wide variety of transitions between the scenes you create for your shows and events. It allows for live recall of 4 user presets, each of which you can edit at any given time.

Whether catering for complex event setups, or putting together intricate shows, your **Smart Vu** will deliver some of what you could expect from a dedicated mixer, as well as its switcher and scaler capabilities.

1/ Press the PIP button. The button will start blinking. On your Preview screen, PIP will appear as a color rectangle. The parameters of the layer will automatically appear on your **Smart Vu** VFD menu screen.

2/ In the *Layer* menu, make the position, size, border and transparency settings you like, then select *Opening Effect* in the layer options, press the ENTER button and select *Type*. Select *Slide Left - Right* for example, and press the ENTER button to confirm. Navigate to *Duration* in the *Opening Effect* sub-menu, and set the duration of your effect by rotating the SCROLL knob and pressing ENTER.

3/ Repeat the procedure in the *Closing Effect* sub-menu to determine the way your layer will close.

Creating Presets

The **Smart Vu** allows the creation of user defined presets very easily. Any setup you have configured on screen, can be stored into one of the 4 available user presets.

1/ After having configured layers, PIP transitions, logos... on your screen (see *Working With the SmartVu*, p.36), go to the *Preset* menu by pressing the EXIT/MENU button, and select *Preset* by rotating the scroll knob, or press the PRESET button. Press the ENTER button to enter the *Preset* sub-menu. Choose *Preset Copy* by scrolling with the corresponding knob, and press the ENTER button to access the sub-menu.

2/ In the sub-menu, choose *Save From Main* or *Save From Preview* to determine which screen you want to memorize the preset from, then set the preset memory (1-4) you wish to use as your "User Preset" (by default, the **Smart Vu** will choose the next available preset in the **Smart Vu** memory).

3/ By pressing the ENTER button, the **Smart Vu** will ask you to confirm. Select *Yes*, your screen is memorized as a preset.

Working with Presets

The four user presets of the **Smart Vu** can be called back at any stage during your show or event.

1/ Press the PRESET button, then press one of the four first Input Selection section buttons to choose which memory (1-4) you wish to use. The preset will be displayed on your preview screen.

2/ Once you have selected your preset, simply press the TAKE button to view the result on your main screen.

Working with Audio

The **Smart Vu** allows to work with up to 5 stereo inputs, 1 auxiliary input, all accessible via the *Audio* menu of the **Smart Vu**, and which can be affected to one or both of the 2 independant symmetrical/asymmetrical outputs of the device.

Audio configuration

To configure audio settings of the **Smart Vu**, plug all audio inputs into the device, and navigate to the *Audio* menu.

1/ Choose the audio mode, *Break Away* or *Top Layer Follow*, which you wish the audio to work in.

*** NOTE * : the *Break Away* mode will air the selected audio source, while the *Top Layer Follow* mode will air audio from the toptmost active layer of the **Smart Vu**.**

2/ Select *Source Settings* from the *Audio* menu to select the audio source you wish to work with, then set levels and left/right balance for each input.

3/ Select *Auxiliary Settings* to determine level and balance of the auxiliary input.

4/ Select the *Main Output* menu to determine main audio output level, balance and delay settings, or to mute main audio output.

5/ Select *Audio Prelist*, from the *Audio* menu, to determine pre-listen audio output level, balance and delay settings, for each audio input, or to mute Prelist audio output.

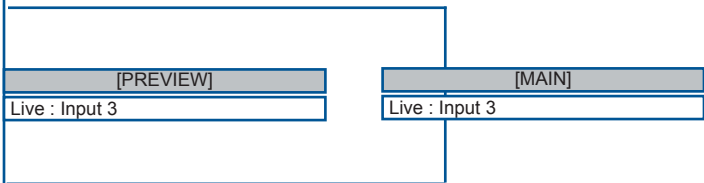
6/ Select *Delay Mode*, to determine how the **Smart Vu** deals with audio delay. Select *Auto Adjust* to let the **Smart Vu** determine audio output delay. Select *Manual Adjust* to determine audio delay manually.

***NOTE* : selecting *Manual Adjust* will give access to audio delay value (in milliseconds) of the main audio output menus.**



[MAIN]
Format : 1920 x 1080
Internal : 60Hz

Current Layer : Live



INPUT

Config status

(i1) displayed when plug is not SDI
 (i2) displayed when type is analog video
 (i3) displayed when plug is analog
 (i4) displayed for input In1, In2, DVI1 & DVI2

(i10) displayed when plug is DVI-D
 (i11) displayed when plug is analog

Autoset all

- Input 1 Analog
- Input 2 Analog
- Input 3 Analog
- Input 4 Analog
- DVI
- SDI 1
- SDI 2

Type (i11)

- SDTV Composite (i11)
- SDTV Y/C (i11)
- SD/ED/HD RGBS (i11)
- SD/ED/HD RGsB (i11)
- SD/ED/HD YUV (i11)
- Computer SOG (i11)
- Computer HV/C (i11)
- Computer RW (i11)
- Computer 0-255 (i10)
- Computer 16-235 (i10)
- DVI video RGB (i10)
- DVI video YUV (i10)

- Auto
- NTSC
- PAL
- PAL_M

Enabled

Audio input

- None
- Audio Input 1
- Audio Input 2
- Audio Input 3
- Audio Input 4
- Audio DVI
- Audio SDI 1
- Audio SDI 2

- Left
- Right

- Group A - Ch 1
- Group A - Ch 2
- Group A - Ch 3
- Group A - Ch 4
- Group B - Ch 1
- Group B - Ch 2
- Group B - Ch 3
- Group B - Ch 4
- Group C - Ch 1
- Group C - Ch 2
- Group C - Ch 3
- Group C - Ch 4
- Group D - Ch 1
- Group D - Ch 2
- Group D - Ch 3
- Group D - Ch 4

H sync load (i3)

- Hi-Z
- 75 Ohms

EDID (i4)

Edit EDID

- 640x480
- 852x480
- 800x600
- 1280x720
- 1024x768
- 1280x768
- 1360x768
- 1200x800
- 1366x800
- 1440x900
- 1280x960
- 1280x1024
- 1364x1024
- 1400x1050
- 1680x1050
- 1920x1080
- 2048x1080
- 1600x1200
- 1920x1200

- 50Hz
- 60Hz
- 72Hz
- 75Hz
- 85Hz

Status

MAIN OUT

PREVIEW OUT

Sync w/OUT 1 ^(o1)

Output status

Output format

640x480	4/3
800x600	4/3
848x480	16/9
1024x768	4/3
1280x720	16/9
1280x768	15/9
1280x800	16/10
1280x1024	5/4
1360x768	16/9
1366x800	15/9
1400x1050	4/3
1440x900	16/10
1600x1200	4/3
1680x1050	16/10
1920x1080	16/9
1920x1080	HD
1920x1080	B
2048x1080	19/10

(o1) only for Preview out/Output2
(o2) depending on output format
(o3) computer & HDTV only
(o4) Interlaced output only

Output rate

23.97 Hz ^(o2)
24 Hz ^(o2)
25 Hz ^(o2)
29.97 Hz ^(o2)
30 Hz ^(o2)
50 Hz ^(o2)
59.94 Hz ^(o2)
60 Hz ^(o2)
72 Hz ^(o2)
75 Hz ^(o2)
Follow x 1/2
Follow x1
Follow x2
Follow x3

Input 1 Analog
Input 2 Analog
Input 3 Analog
Input 4 Analog
DVI
SDI 1
SDI 2

Out Sync Polarity

H-, V-
H-, V+
H+, V-
H+, V+

Gamma

Flicker filter ^(o4)

Analog Type

RGB HV
RGBS
RGsB (SOG)
YUV

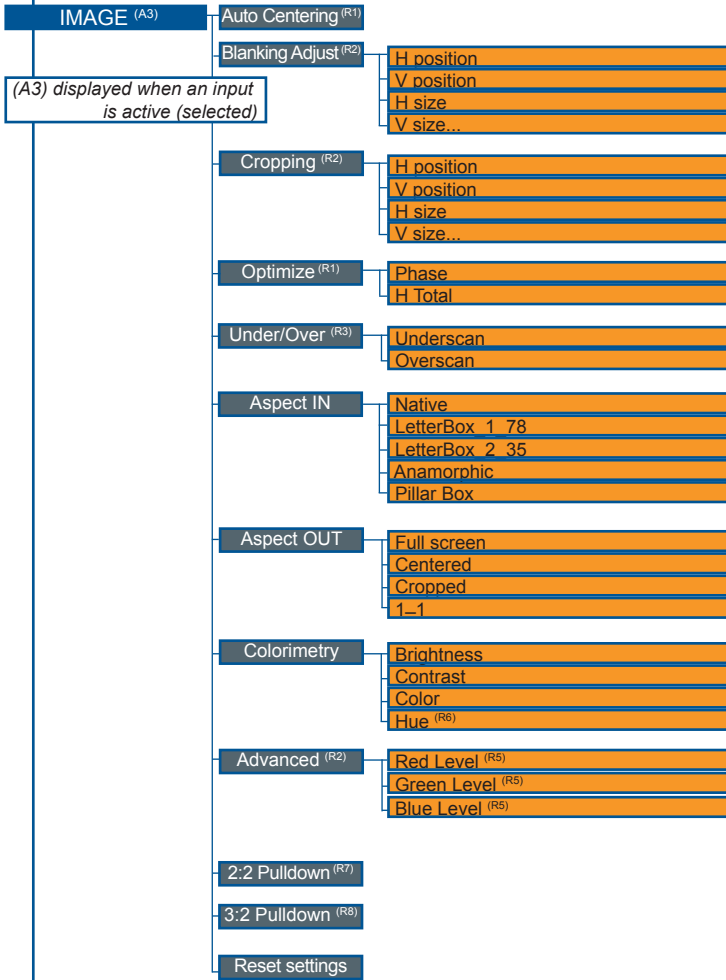
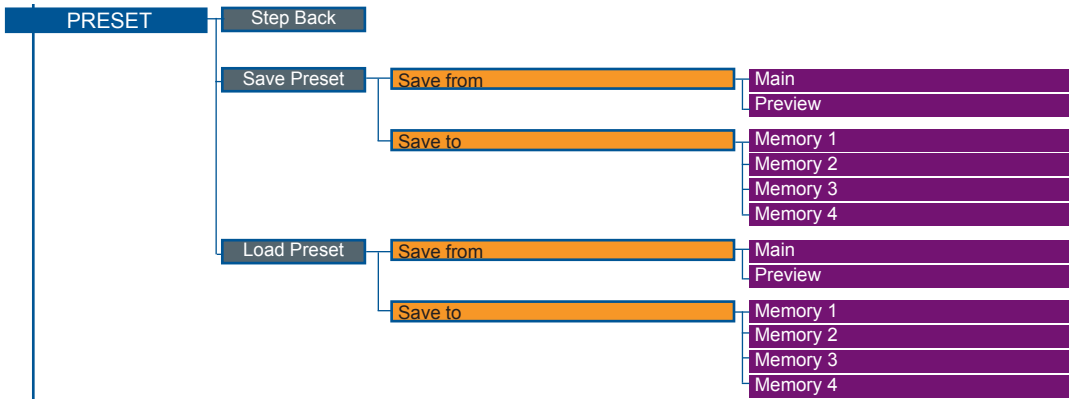
DVI Type

RGB full (0-255)
RGB limited (16-235)
YUV

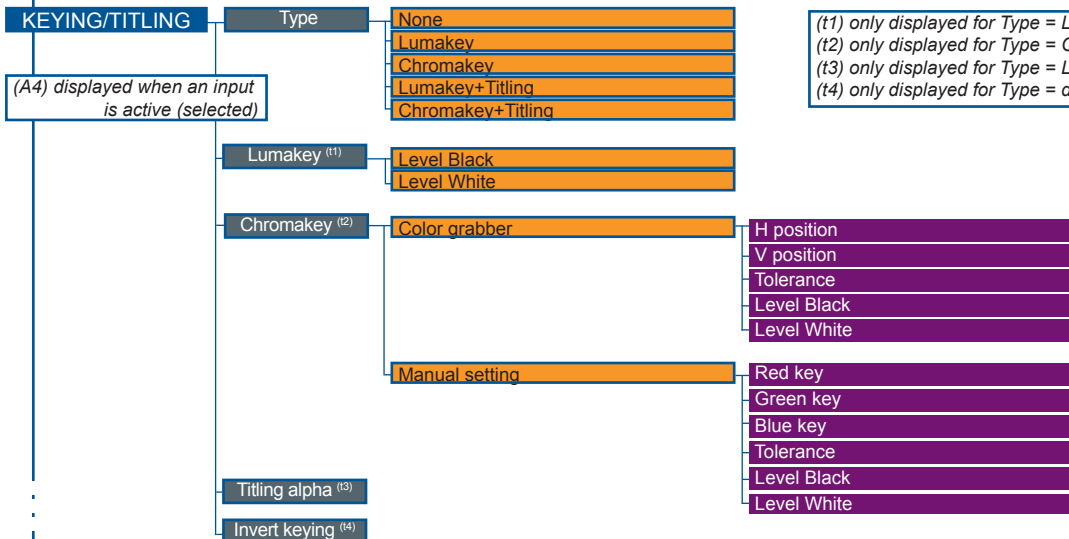
Test Pattern

Main
Preview

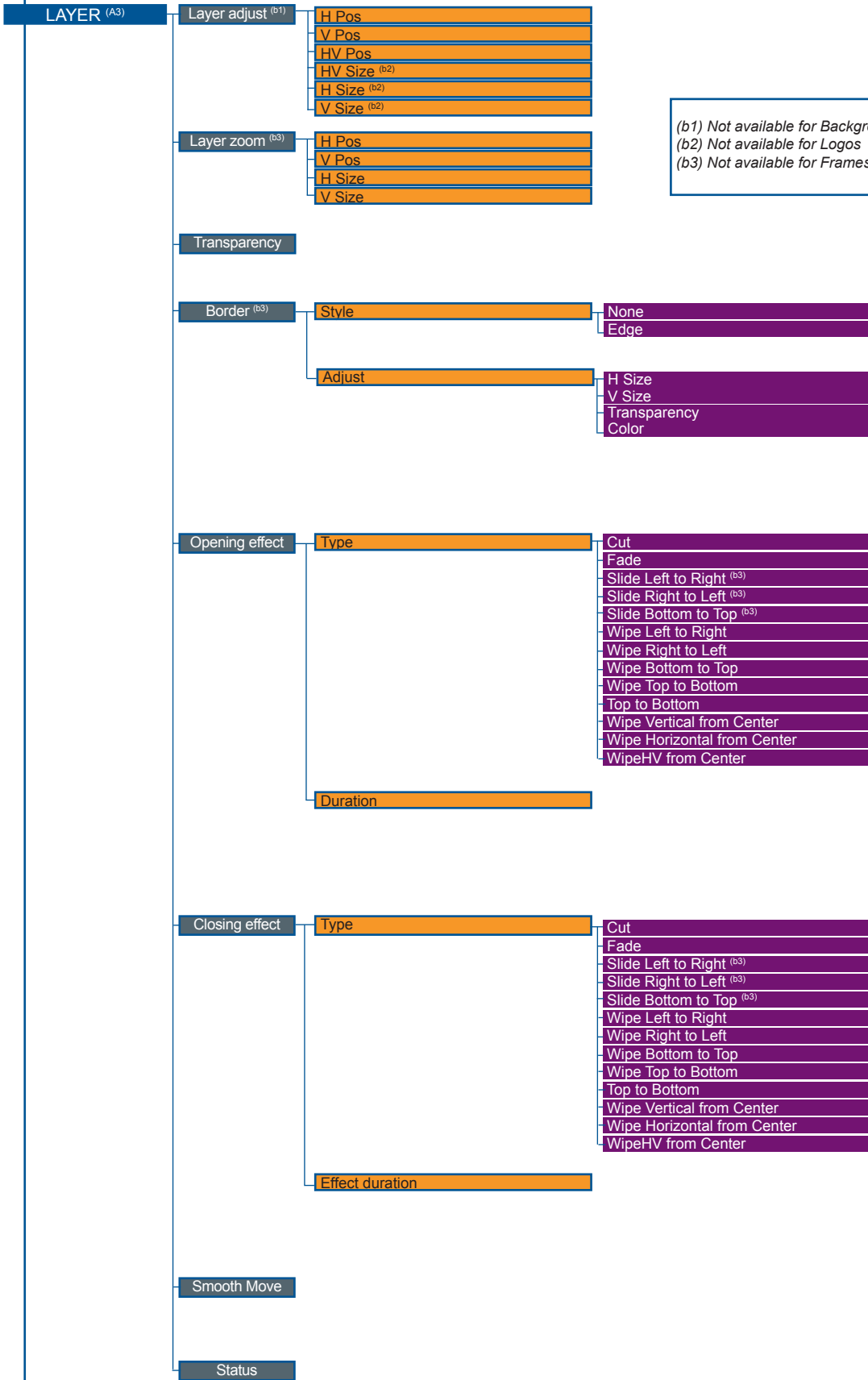
OFF
V Grey scale
H Grey scale
V Color bar
H Color bar
Grid
SMPTE
Burst ^(o3)
Centering



(R1) Analog Computer Input
 (R2) Analog Input
 (R3) Video Input
 (R4) EDTV/HDTV Input
 (R5) RGB or YUV or YC or CV
 (R6) NTSC Input
 (R7) Interlaced 50 Hz
 (R8) Interlaced 60 Hz
 (R9) SDTV
 (R10) Analog input or Interlaced signal
 (R11) Interlaced signal

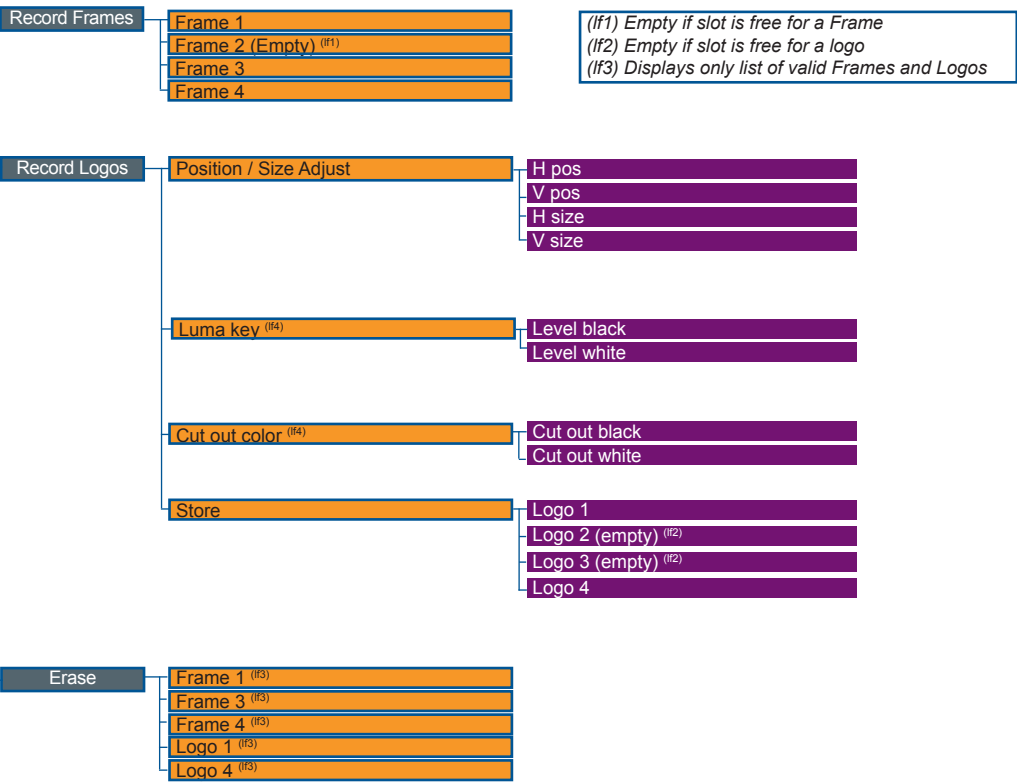


(t1) only displayed for Type = Luma Key or LumaKey+Titling
 (t2) only displayed for Type = Chroma Key or ChromaKey+Titling
 (t3) only displayed for Type = LumaKey +Titling or ChromaKey+Titling
 (t4) only displayed for Type = different from None

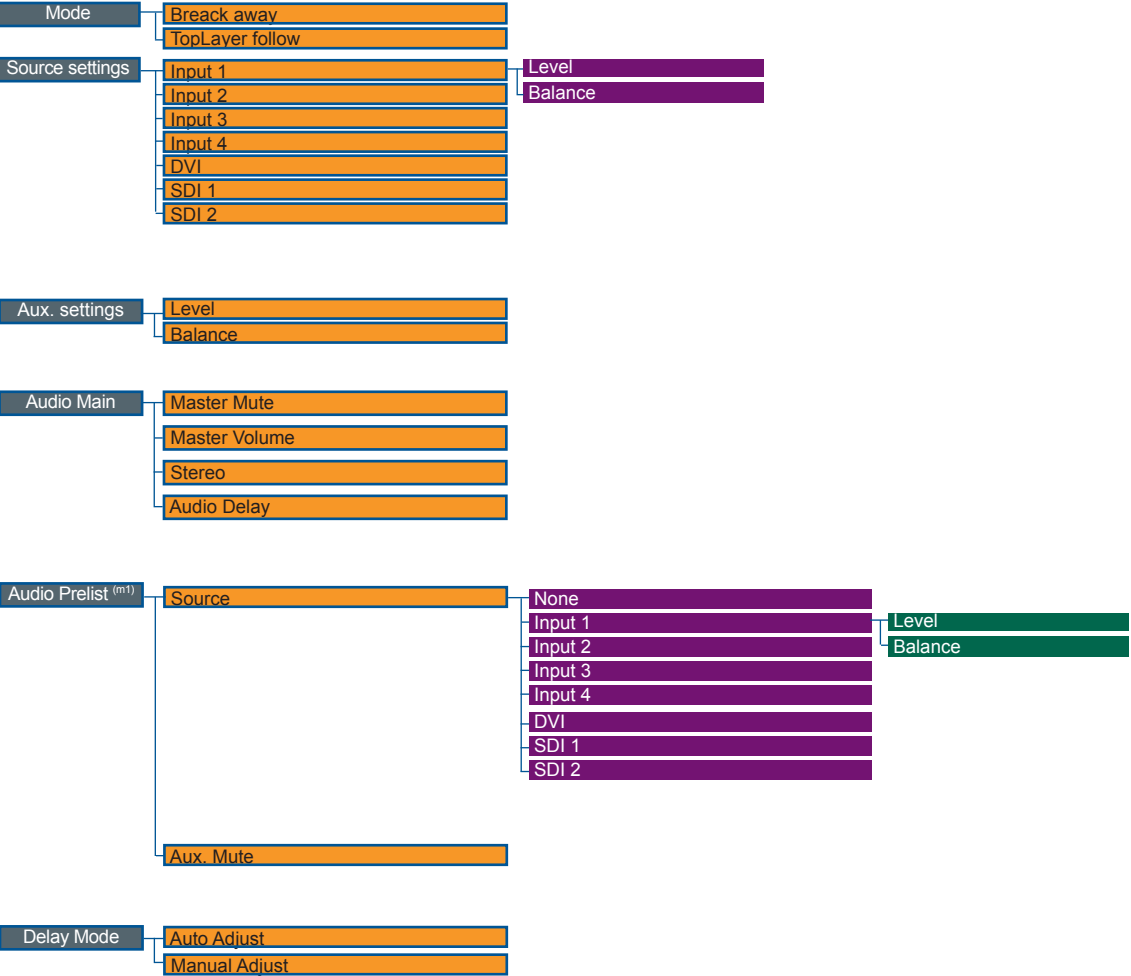


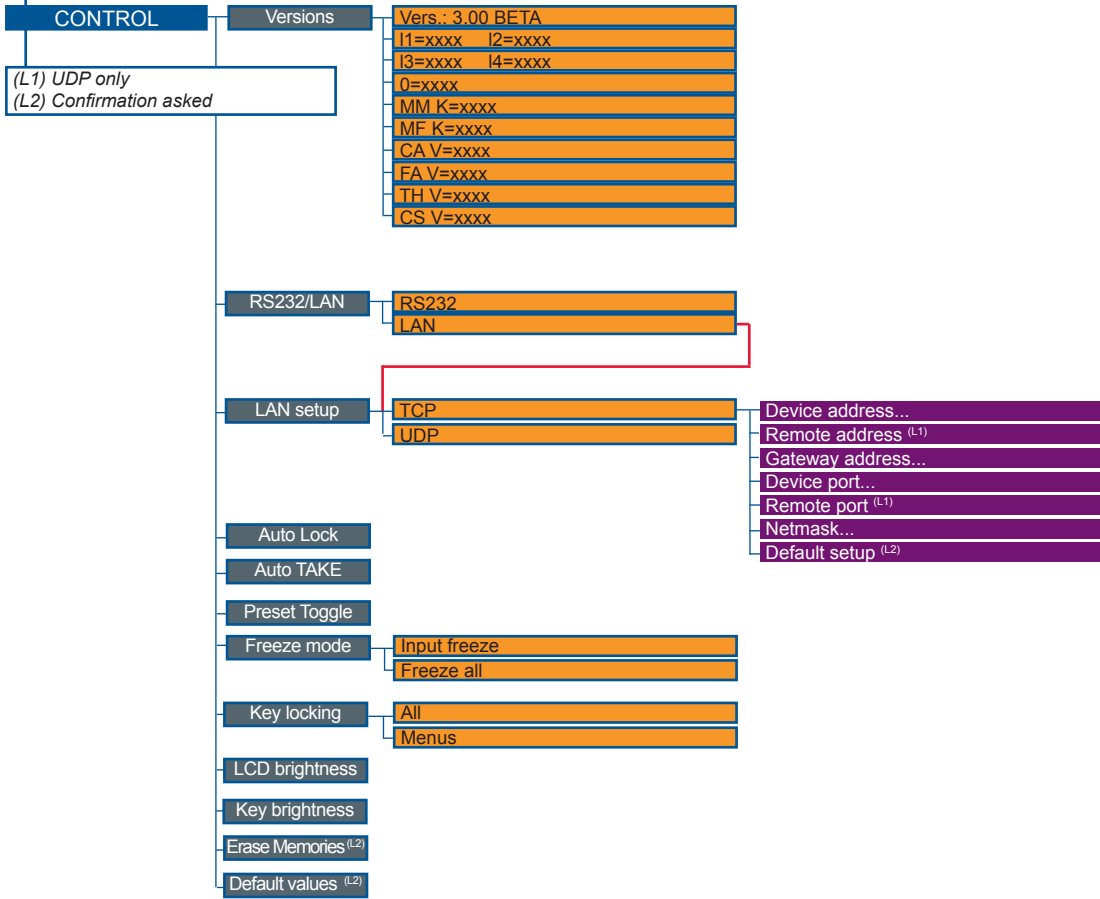
(b1) Not available for Background Frame & Live
 (b2) Not available for Logos
 (b3) Not available for Frames & logos

LOGOS/FRAMES



AUDIO





5-1. THE SVU300 RCS

RCS presentation

Your **Smart Vu** is shipped with a Windows compatible control software. The RCS software allows you to control your **Smart Vu** in exactly the same way as with the front panel of the device, only using your PC as a remote.



Not compatible with Apple computers

How to use the RCS ?

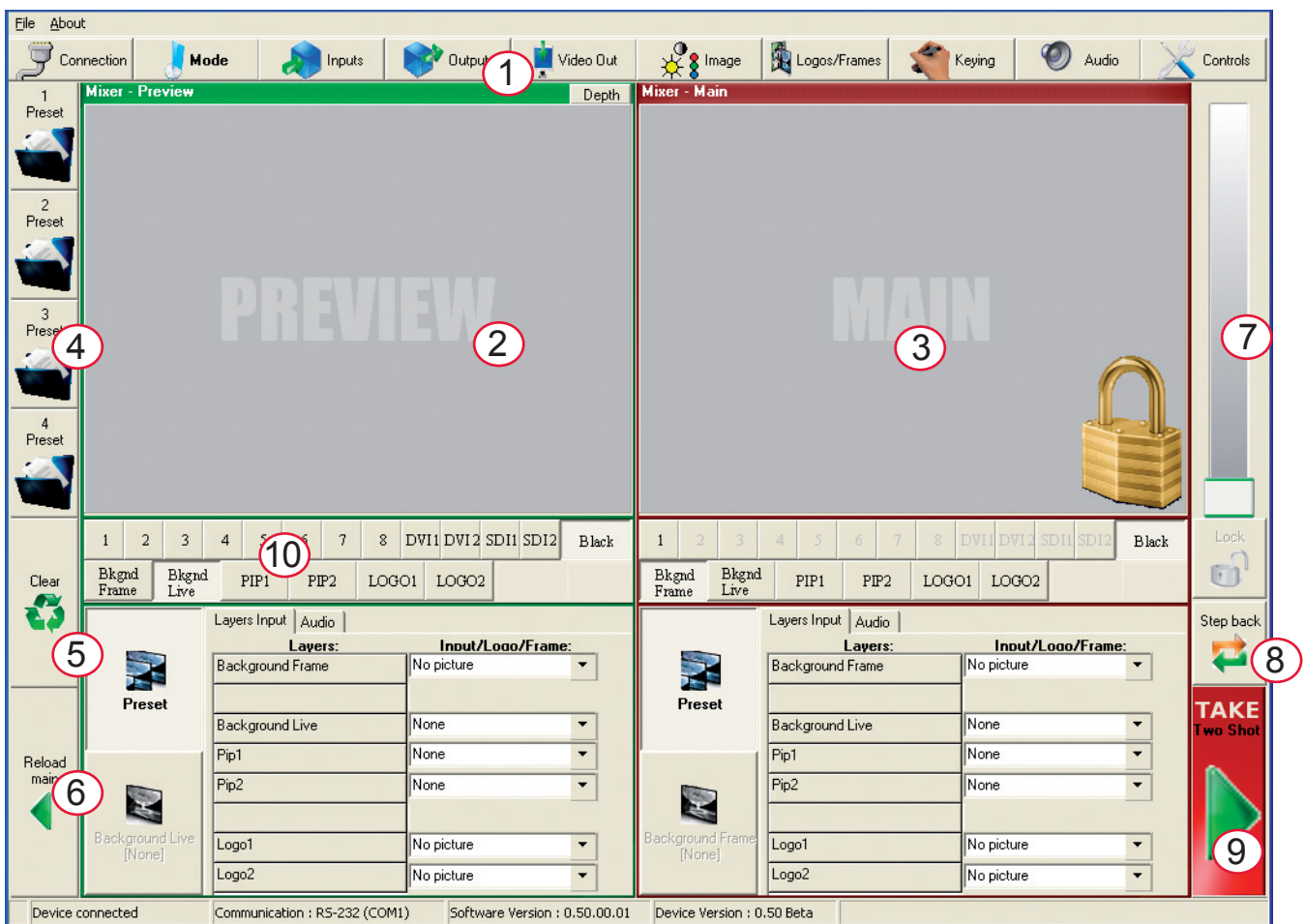
You have to install the software on a Computer (Windows based only) and have a LAN board or RS-232 link to use the RCS. After the installation, launch the program and proceed to the network establishment.

Software installation

1. Connect you on www.analogway.com.
2. In the menu, select [Technical Support] menu, then click on [Remote Control Software], select the name of your device and click on [Download].
3. Click on [Open with] or [Register the file], select the .exe file.
4. Follow the Windows installation instructions.

Software overview

The RCS software for your **Smart Vu** is composed of several easily identified sections. The tabs menu (1) allows you to navigate through the equivalent of the **Smart Vu** front panel menu items (see also “The SmartVu Menu”). The green window of the RCS (2) represents your Preview window, and can be used to parameter sources, frames, layers and logos directly by clicking on the corresponding button, then navigating through the different available tabs. The red window of the RCS (3) represents your Main window, and can also be used much like the front panel of the **Smart Vu**. Create user presets directly in the RCS main window, by clicking on one of the four available Preset icons (4) and setting up your preset in the Preview window. Clear unwanted steps with the clear button (5), reload a fresh copy of your screen via the Reload Main button (6), make smooth takes directly with your mouse or trackpad with the virtual T-bar (7). The Take button (9) will allow you to view any changes made to your preview screen on your main screen, and Analog Way engineers have even implemented a Stepback button (8) to quickly move back to your previous setup in the case of a manipulation error. The status section (10) allows for easy monitoring of the connection status.



The RCS software for your **Smart Vu** can be viewed as the software version of the **Smart Vu** front panel menu section. It allows you to quickly access all of the **Smart Vu** functions via a single page interface, and easily edit your settings directly from your laptop or PC.

Before starting with the RCS software, you must establish a connection from your laptop to the **Smart Vu** you wish to run.

Serial connection

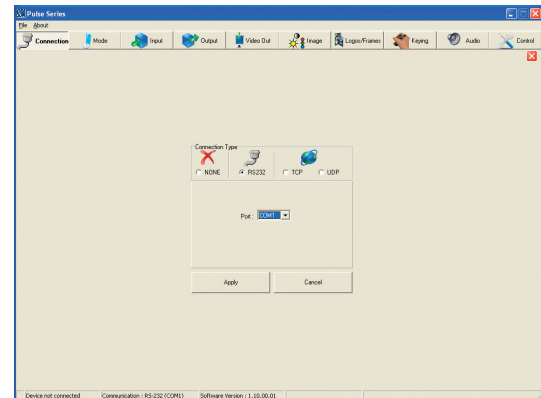
1/ Connect an RS232 cable between the **Smart Vu** and your PC, then power on your devices.

2/ Click on the RCS program file on your PC to run the software.

3/ Click on the “Connections” tab and select RS232 as the connection type. In the drop-down menu, select the COM port number corresponding to the connected device (default is Port 1).

4/ Click apply, and wait for devices to synchronize. The RCS will display the following connection message : “Device Connected”

5/ Click on the “Connections” tab to return to the main screen.



Ethernet connection

1/ Connect a crossed RJ45 cable between the **Smart Vu** and your PC, then power on your devices. Use straight RJ45 if connecting through a network switcher.

2/ Click on the RCS program file on your PC to run the software.

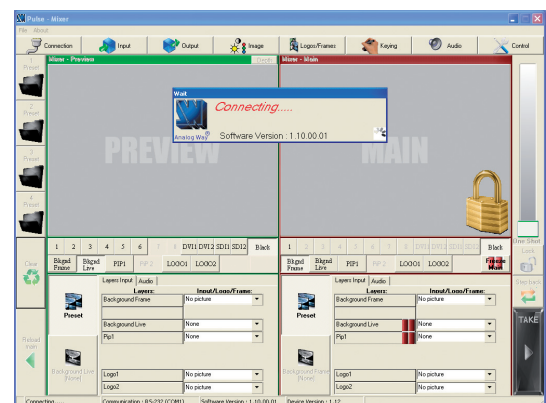
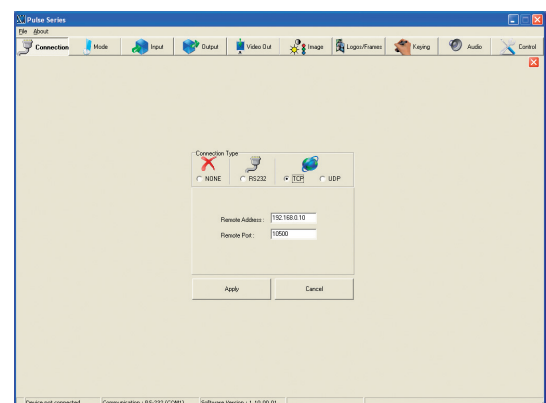
3/ Click on the “Connections” tab and select LAN as the connection type.

4/ In the “Remote Address” field, enter the IP address of the **Smart Vu** you wish to control (see also “Working with the SmartVu”, p.36).

5/ In the “Remote Port” field, enter the remote port number of the **Smart Vu** you wish to control (see also “Working with the SmartVu”, p. 36).

6/ Click Apply, and wait for devices to synchronize. The RCS will display a connection message.

7/ Click on the “Connections” tab to return to the main screen.

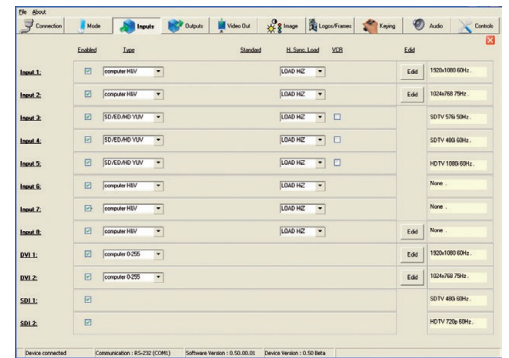
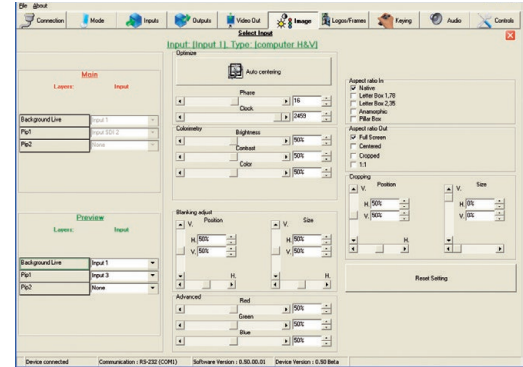


5-2. WORKING WITH THE RCS

Source input configuration

Once your **Smart Vu** is wired up to your PC, the first step in properly configuring your machine is to individually select and parameter your inputs.

- 1/ Click on the “Inputs” tab of the RCS.
- 2/ In the Plug column of the “Input” page, select the plug type by clicking the appropriate field.
- 3/ Activate the input in the Enabled column if it is not.
- 4/ In the scroll-down menu of the Type column, select the signal type connected to that plug.
- 5/ Repeat steps 2 to 4 for all sources connected to the rear panel of your **Smart Vu**.
- 6/ Click on the “Inputs” tab to return to the main screen.

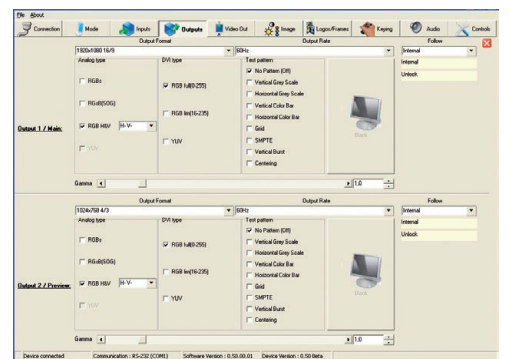


Source output configuration

- 1/ Click on the “Outputs” tab of the RCS.
- 2/ Select the type of plug which is connected to outputs 1 & 2 of your **Smart Vu** by clicking in the appropriate field in Analog Type or DVI Type for both Main and Preview outputs.
- 3/ Select the appropriate output format and output rate.
- 4/ Click on the “Outputs” tab to return to the main screen.

The *Output* menu also allows you to generate test patterns. The test patterns available through the *Output* menu let you quickly and reliably setup your projectors.

*** NOTE * :** Be sure to turn the test pattern off to display your sources again.

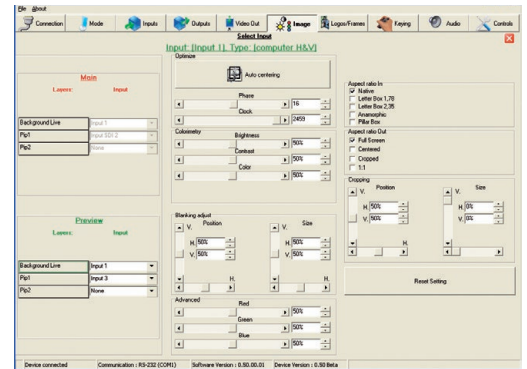


Working with PIPs

The **Smart Vu** with the Frame/PIP option installed, allows users to manipulate a PIP (Picture In Picture) which you can move, size, crop or zoom, apply transparency or transitions to.

PIP configuration

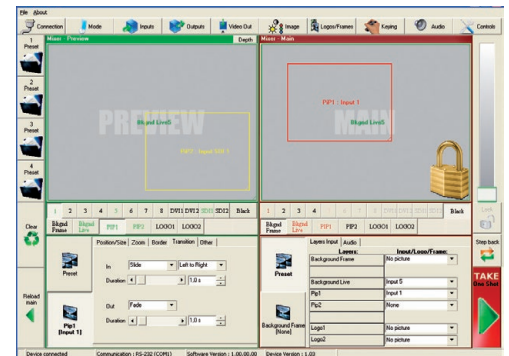
- 1/ Click on the *Image* tab of the RCS interface. The empty *Image* screen will appear on screen.
- 2/ By clicking on the drop-down menu in the Preview section, situated next to the layer you wish to use as a PIP, you will access the image parameters of the PIP source you select (1-10).
- 3/ Set the desired PIP attributes (size, position, zoom, border, transparency...).
- 4/ Click the *Image* tab to return to the main screen.



Layer transitions & effects

The **Smart Vu** offers a wide variety of transitions between the scenes you create for your shows and events. It allows for live recall of 4 user presets, each of which you can edit at any given time.

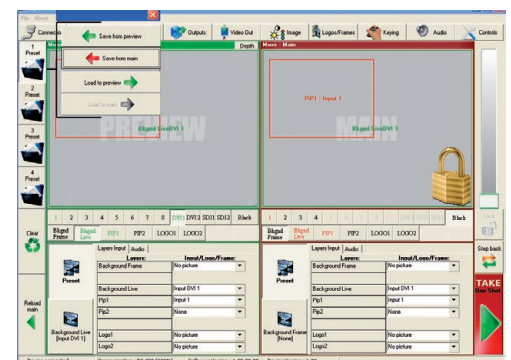
- 1/ In the Layer Selection section, click the PIP button. On your Preview screen, PIP1 will appear as a color rectangle. The parameters of the layer will automatically appear in the RCS Preview section.
- 2/ At the bottom of the Preview section, click on the *Transition* tab, then select the transition type from the left dropdown menu, and the effect behaviour from the right dropdown menu.
- 3/ Determine effect duration by sliding the duration bar left (shorter) or right (longer), or by manually setting the value in the duration value box.
- 3/ Repeat the procedure in the *Closing Effect* tab to determine the way your layer will close.



Creating presets

The **Smart Vu** allows the creation of user defined presets very easily. Any setup you have configured on screen, can be stored into one of the 4 available user presets.

- 1/ After having configured layers, PIP transitions, logos... on your screen (see "Working With the RCS" chapter, p. 42), click on one of the four available *Preset* buttons.
- 2/ In the dropdown menu, choose *Save From Main* or *Save From Preview* to determine which screen you want to memorize the preset from.
- 3/ By clicking one of the two options, the RCS will automatically load and preview the selected Preset.
- 4/ Click the *Take* button to view your preset on the Main screen.

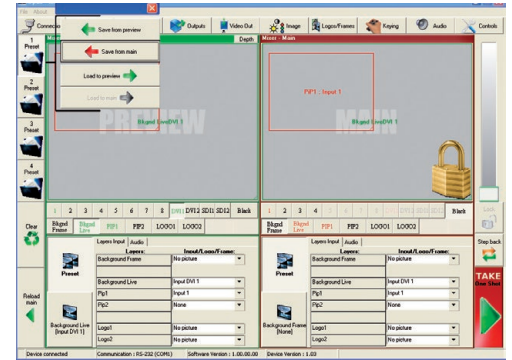


Working with presets

The four **Smart Vu** user presets can be called back at any stage during your show or event.

1/ Click one of the four available *Preset* buttons to choose which memory you wish to use. Select *Load to Preview* from the dropdown menu, your preset will appear on the Preview screen.

2/ Once you have selected your preset, simply click the *Take* button to view the result on your main screen.



Working with audio

The **Smart Vu** allows to work with up to 5 stereo inputs, 1 auxiliary input, and 2 embedded SDI audio inputs (via the SDI BNC connectors), all accessible via the *Audio* menu of the **Smart Vu**, and which can be affected to one or both of the 2 independant symmetrical/asymmetrical outputs of the device.

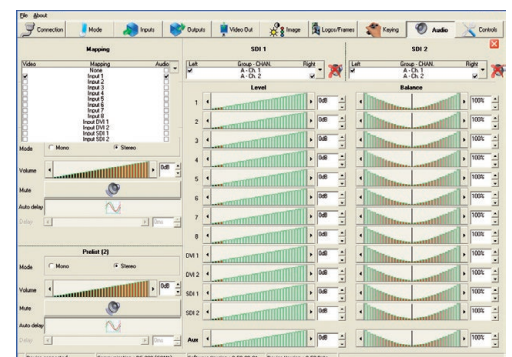
Audio Configuration

To configure audio settings of the **Smart Vu**, plug all audio inputs into the device, and click on the *Audio* tab of the RCS home page.

1/ Set the Main audio output level and delay (accessible only if Delay Mode is set to Manual Adjust, see also the “Audio Configuration” chapter, page 40), or click the Mute button to mute Main audio output.

2/ Repeat step 2 for the Prelist audio output.

3/ Individual source settings (level and balance) for each audio input can be configured in the right hand section of the *Audio* tab.



6-1. Axion2



Axion2: The Axion2 is an ergonomic and reliable remote controller for rental & staging/multi-venues at an optimal price/performance ratio. It controls simultaneously up to 6 screens in a single or multiple display configuration. The Axion2 integrates a offline mode for setup the devices not connected. A sequences mode is also available for automatic recall of presets.

6-2. Orchestra

Orchestra: The Orchestra is an ergonomic and reliable remote controller for rental & staging/multi-venues at an optimal price/performance ratio. It controls simultaneously up to 6 screens in a single or multiple display configuration.



6-3. TRK-800

TRK-800: Triple Remote Keypad designed to control up to 3 units.



- > Powerful High End Remote Controller
- > Controls up to 3 different switchers
- > Mini Joystick for easy element control
- > Ethernet LAN RJ45 connector for easy connection
- > Double Large VFD display offering high contrast menu and status.

6-4. RK-300

RK-300: Remote Control Keypad designed to control Analog Way's new Seamless Switchers

- > Very User-friendly Remote Control Keypad
- > Controls different Switchers
- > Mini Joystick for easy element control
- > Ethernet LAN RJ45 connector for easy connection
- > Large VFD display offering high contrast menu.



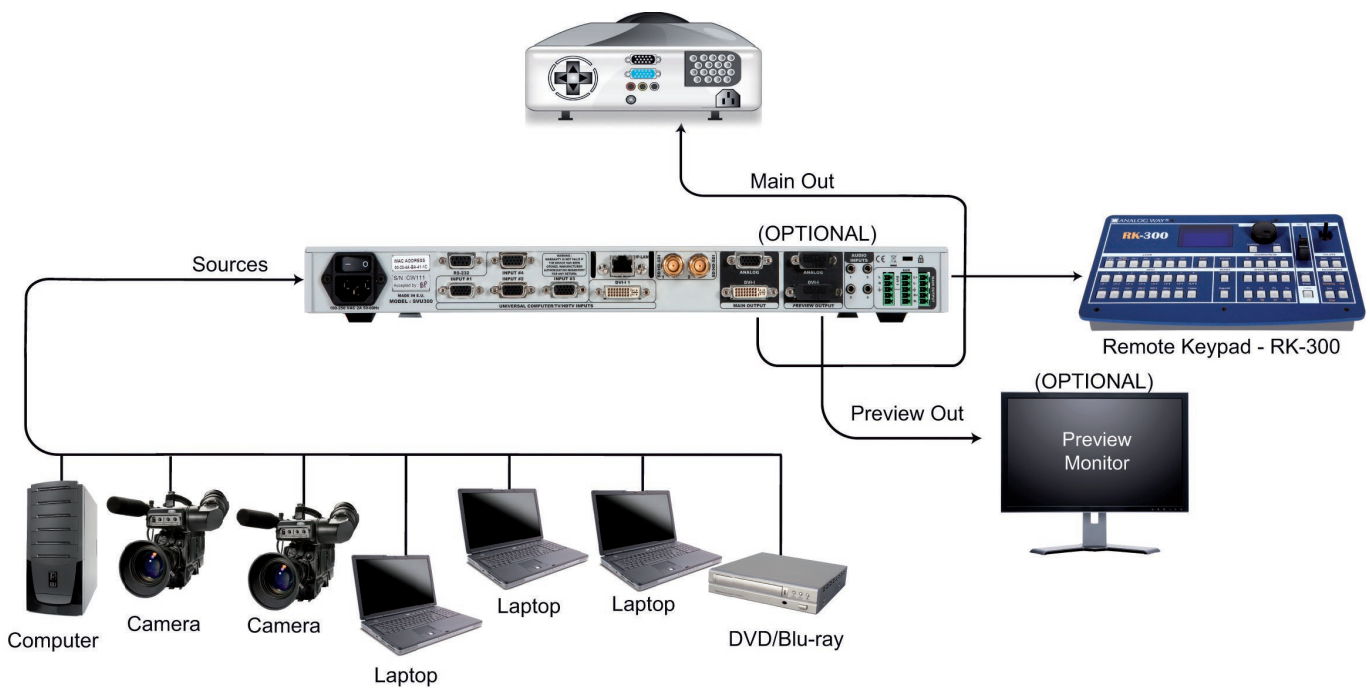
NOTE: for further information concerning our optional remote controllers, please connect to our website on: www.analogway.com

7-1. ABOUT EXAMPLES

Application examples are intended to make the use of the **SVU300** as easy as possible, by providing visual help in setting up your equipment. In an effort to make the use of our machines the most pleasant experience possible, the **Analog Way** team is constantly aiming to create easy to follow examples, update information, and furnish our website with useful user information.

Please check on www.analogway.com

7-2. EXAMPLE



7-3. EXTERNAL PROGRAMMING

If you need to use your own Software Control program from a PC or automation, the device allows communication through an ASCII code protocol. All commands can be found on the CD-Rom shipped with the **SmartVu** in the “Programmer’s Guide” file.

All Analog Way products equipped with an RS232 input are compatible with Crestron, AMX, Medialon, and most major control systems. TCP/IP control ports are also available on most Analog Way products, as standard or as options.

To control an **SVU300** product with an External Remote Controller (PC Software Control - Touch Pad Controller...) follow the indications below :

1/ First establish an RS-232 communication between the Remote Control Software and the **SVU300**, in order to setup the LAN parameters of the product.

2/ In the “Control” - “SmartVu LAN Setup” menu, configure the connection of the **SVU300** product in UDP mode and setup the Local and Remote Addresses as well as the Local and Remote Ports in concordance with your Network.

3/ Configure the TCP/IP address of your External Remote Controller. In example: 192.168.000.001

4/ Setup the UDP connection of your External Remote Controller in concordance with your Network.

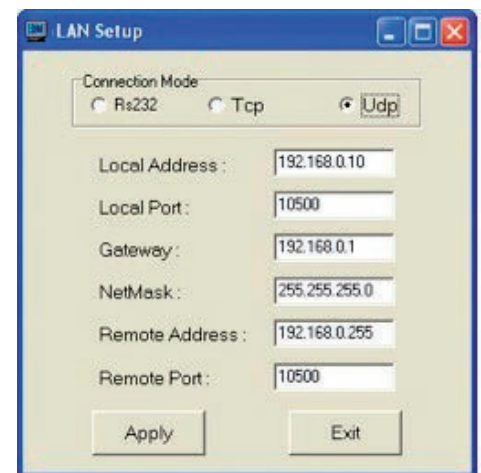
In example on the Remote Software in the “Control” - “RS232/LAN Setup” - “LAN/Setup” menu :

5/ Setup the LAN parameters in UDP mode in the “Console” - “LAN Setup” menu.

In example:	RK Address:	192.168.000.002
	Remote Address:	192.168.000.010
	Gateway Address:	192.168.000.001
	RK Port:	10500
	Remote Port:	10500
	Netmask:	255.255.255.000

6/ Select the LAN communication port in the remote controller console - “RS232/LAN port” menu.

7/ You can now control your **SVU300** product with an External Remote Controller.



8-1. ANALOG WAY LIMITED WARRANTY

All **Analog Way** products have a 3 year warranty on parts and labor, back to factory. This warranty does not include faults resulting from user negligence, special modifications, electrical surges, abuse (drop/crush), and/or other unusual damage.

8-2. SERVICES AND RMA

In the unlikely event that a product is required to return for repair, please call the regional Maintenance center / Customer Service, and ask to receive a Return Material Authorization number (RMA). Three regional maintenance centers are available depending on your location. See map below for information on which regional maintenance center you depend on.

RMA Conditions:

1. Prior to returning any item, you must receive a Return Material Authorization (RMA) number.
2. All RMA numbers must appear on the return-shipping label.
3. All shipping and insurance charges on all RMAs must be prepaid by the customer.



North & South America

Analog Way Inc.
299 Broadway, Suite 1620
New York, NY 10007
United States of America

Europe, Middle East and Africa

Analog Way SAS
33 rue du Saule Trapu
Parc du Moulin
91300 Massy - FRANCE

Asia - Pacific

Analog Way Pte Ltd.
No 10 Ubi Crescent
#03-05 Ubi Techpark Lobby A
Singapore 408564

HOW TO CONTACT US

Analog Way SAS

33 rue du Saule Trapu
Parc du Moulin
91300 Massy
France
Tel.: +33 1 64 47 16 03
Fax: +33 1 64 47 14 73
saleseuro@analogway.com

Analog Way Inc.

299 Broadway, Suite 1620
New York, NY 10007
United States of America
Tel.: +1 212 269 1902
Fax: +1 212 269 1943
salesusa@analogway.com

Analog Way Pte Ltd.

No. 10 Ubi Crescent
#03-05 Ubi Techpark Lobby A
Singapore 408564
Tel.: +65 6292 5800
Fax: +65 6292 5205
sales@analogwayasia.com

For more documentation, general information, or simply to keep up to date with new releases and upcoming Analog Way products, please log on to www.analogway.com.

Before calling your regional maintenance center, please gather the following information:

- Serial number of the unit
- Firmware version (look in: CONTROL MENU/VERSIONS)
- Model reference (**SVU300**)
- Description of failure

INFORMATION ON UNIT DISPOSAL

In the European Union:

If the product is used for business purposes and you want to discard it:

Please contact your Analog Way dealer who will inform you about take-back of the product. You might be charged for the costs arising from take-back and recycling.

For Spain:

Please contact the established collection system or your local authority for take-back of your used product.

In other countries outside the EU:

If you wish to discard of this product, please contact your local authorities and ask for the correct method of disposal.

```
[MAIN] -- [PREVIEW]
black      black
black      black
black      black
input 1    input 1
black      black
```



1920x1080

Version : 1.00 - 22/06/2012
Code : 140109

Designs and specifications are subject to change without notice
The illustrations and screens described in this manual may be exaggerated or simplified for easy
recognition and may be slightly different from the actual unit.

ANALOG WAY SAS
33 rue du Saule Trapu
Parc du Moulin
91300 Massy - France