



AV Connectivity, Distribution And Beyond...

**VIDEO WALLS VIDEO PROCESSORS**  
**VIDEO MATRIX SWITCHES**  
**EXTENDERS SPLITTERS WIRELESS**  
**CABLES & ACCESSORIES**

## AV-VUWALL-36

20/20 video wall controller board  
 with optional upto 36 Inputs / 36 Outputs  
 4U Video Wall Controller



## VIDEO WALL PROCESSOR

### KEY FEATURES

- Single-slot board design with integrated support of 36 outputs and 36 inputs channels on the same board
- PCI Express x16 Gen2 host bus connection leverages 64 Gbit/s full duplex data transfer
- Maximum output resolution of 2048x1152 (SL-DVI) & 2048x1536 (RGB/VGA) per display
- Maximum input resolution of 1920x1200 (SL-DVI, RGB/VGA), 1920x1080i (Component), and NTSC/PAL/SECAM (S-Video, Composite) per input
- HDCP compliant board captures protected video content from digital cable, satellite set-top boxes, video streamers and Blu-ray™ players and outputs the content to HDCP-enabled displays
- Supports Bezel Management as well as Edge Overlap for multi-projector platforms in both landscape and portrait modes
- Multi-functional board design facilitates video switching, signal conversion, scaling and de-interlacing from a single board, eliminating the need for separate solutions
- Vuwall for iPad® and Vuwall for Windows® software easily and intuitively controls your video wall.
- Designed for Microsoft® Windows® 7 Professional (64 bit) and Windows Server® 2008 R2 (64 bit)



### 36 Inputs /36 Outputs 4U Video Wall Controller



The AV-VUWALL-36 is an ideal compact solution capable of driving up to 36 displays. With maximizing performance and lower power consumption, the AV-VUWALL-36 is the powerful, flexible and affordable multi-display system for configuring display walls and digital signage.



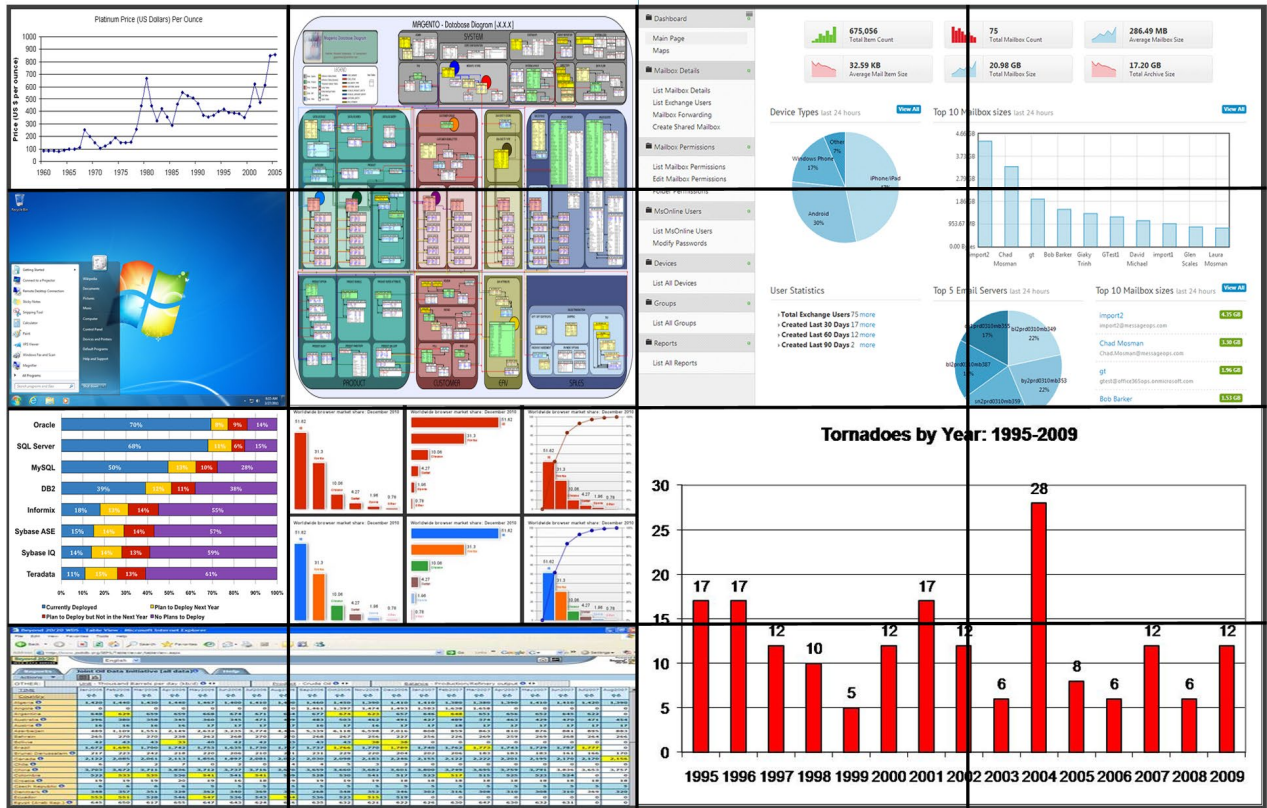
ITEM	SPECIFICATION
<b>Form Factor</b>	4U - 19" Rackmount
<b>Input/Output</b>	Supports Up To 36 Inputs / 36 Outputs
<b>Card Support</b>	AV-VUWALL-8 Cards
<b>I/O Connectivity Options</b>	DVI, VGA, S-Video, Composite Video
<b>CPU</b>	Intel Core i7 950 / 3.06 GHz
<b>Network</b>	2x 10/100/1000 NIC
<b>System Memory</b>	Supports Up To 16GB DDR3 ECC Memory
<b>Power</b>	Optional Redundant N+1 Hot Swappable power supply - 700W
<b>Storage</b>	250 G IDE or SATA hard disk, optional SCSI RAID disk arrays
<b>Software Options</b>	Crestron Processor Integration, Remote Video Wall Administration with Tablet Support, Network API Support
<b>Relative Humidity</b>	20 ~ 90% RH (non-condensing)
<b>Dimensions (L x W x H)</b>	478 x 482 x 177mm (18.8" x 19" x 7")
<b>Power Supply</b>	100-240V AC



AV Connectivity, Distribution And Beyond...

**VIDEO WALLS VIDEO PROCESSORS**  
**VIDEO MATRIX SWITCHES**  
**EXTENDERS SPLITTERS WIRELESS**  
**CABLES & ACCESSORIES**

HD Monitor 4x4 Configuration



((HDCP))



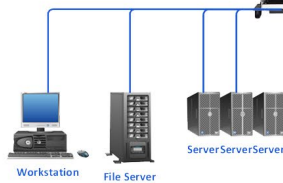
3rd PARTY  
CONTROL SYSTEMS



CONTROL SOFTWARE



COMPATIBLE



COMPATIBLE



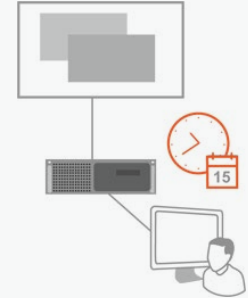
## VuWall2 is designed for:

- Control rooms • Security and Traffic • Monitoring • Video Conferencing
- Board Rooms • Public Information • Digital Signage

## Features:

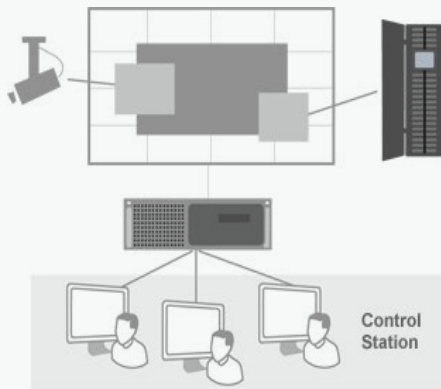
- Scales up to 36 synchronized/framelocked displays
- Full HD input and output resolutions
- 36 Digital Inputs, 36 Digital Outputs
- PCIe x16 Gen2 bus architecture and universal I/O functionality deliver exceptional performance and flexibility
- Robust network API enables a variety of control options for video walls
- 4U chassis for high-density, scalable video wall solutions

### Task Scheduler



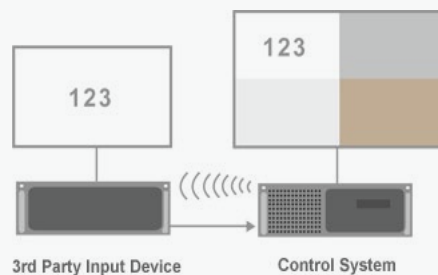
Easily automate displayed content on the video wall.

### Intuitive and Powerful Control Interface



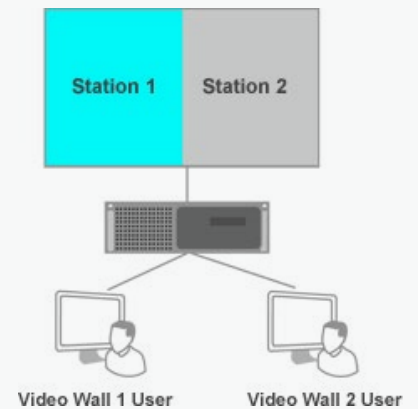
Seamlessly manage local applications, networked computers and captured sources.

### VuWall Application Programming Interface (API)



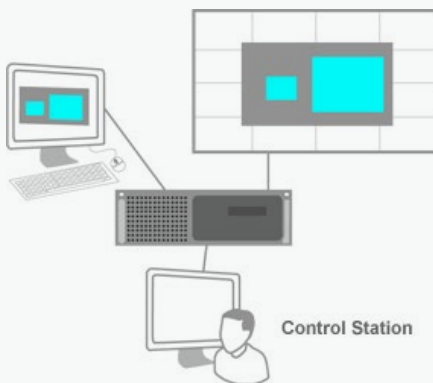
Easily insert VuWall commands in third party control systems (Crestron, AMX, ...)

### Concept of Sub-Section



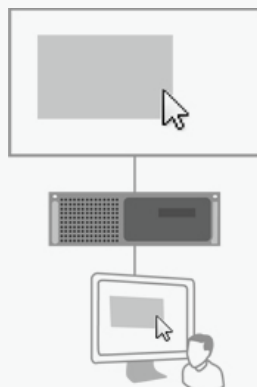
Divide your video wall in sub-sections and manage each sub-section as if it was an individual video wall.

### Intuitive and Powerful Control Interface



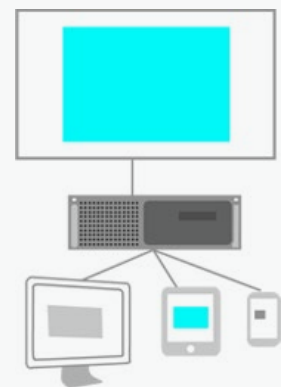
- 1) Control networked computers directly from the video wall from any operator's desktop.
- 2) Easily configure the control and view restrictions of networked computers.

### Virtual Mouse pad



The VuWall2 control interface allows the operators to have their keyboard and mouse active on the video wall.

### Web Page Control



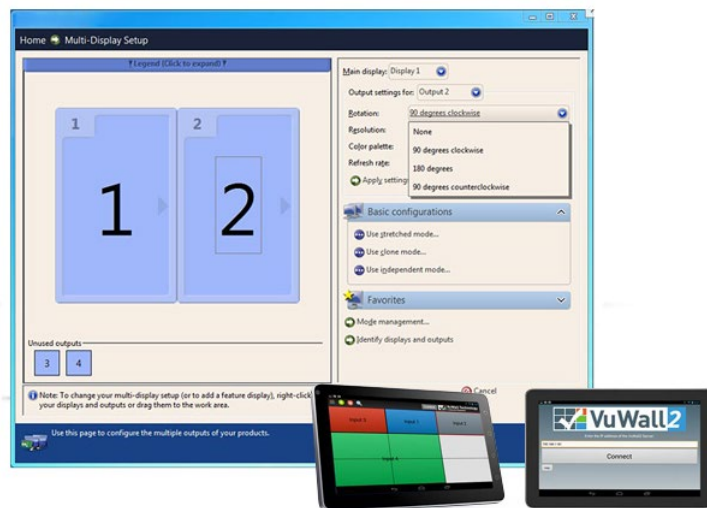
Switch layouts and display scenarios from a tablet or smart phone, or from the web browser of your PC.

## VuWall2 - Video Wall Management Software

VuWall Control for Windows is an intuitive, feature-rich application that allows you to manage your AV-VUWALL-36 powered video wall. Run the software locally or remotely—and use it to create, save and edit layouts offline or in real time so your source content appears precisely where you want it, how you want it.

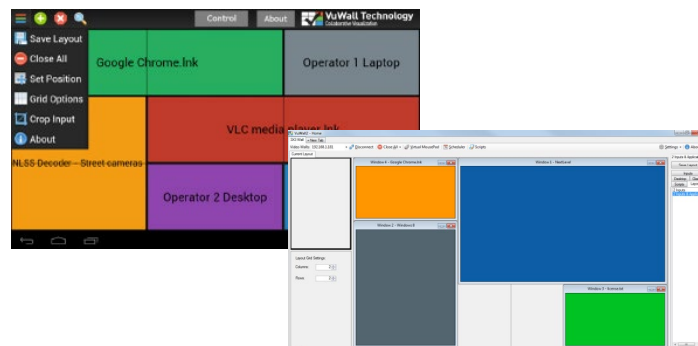
### Layout Management Features

- Create, save, rename, copy, and delete layouts
- Switch from layout to layout with a single click
- Lock a layout to prevent accidental changes
- Import or export a layout
- Control background color as well as window border color and width
- Create a scrolling text across the entire video wall with the marquee function
- Create a layout offline and then push it live, or edit layouts online in real time
- Add and control external applications such as VLC®, VNC®, Internet Explorer®, PowerPoint® Viewer, and Image Viewer on the video wall NEW
- Create layout schedules to automatically switch from one layout to another NEW



### Window Management Features

- Position windows anywhere on the wall using a mouse or keyboard
- Resize a window precisely by entering the custom input size using four separate fields or click and drag a window corner to maintain the aspect ratio of a window while scaling
- Clone an input source to multiple windows
- Label visible windows
- Advanced window cropping—either by graphically resizing the viewport through the UI or by entering precise cropping coordinates to achieve maximum pixel accuracy
- Intuitive Z-order management
- Support for picture-in-picture configurations
- Text overlay function with control over text font, color, size, location, blink and scroll speed
- Window transparency and colour keying functions NEW



### Source Management Features

- Renaming, cropping, rotation (90°, 180°, and 270°), and text overlay functionality
- Source-specific hue, saturation, brightness, and contrast color correction parameters
- Multiple deinterlacing filters—including single field, bob, weave, and adaptive techniques
- Source touring for automated source switching within one or more windows in a layout NEW

- Additional Features
- Run the software locally or remotely
- Run the desktop or replace it with a static background
- Connect to the controller using an IP address or computer name
- Start and stop the controller from within the application
- Create custom gridlines and control window snap behaviour to the lines, other windows, and/or physical displays
- UPnP support enables automatic identification of all Mura controllers within the local subnet NEW

VuWall2 Control for Windows is compatible with Windows XP, Windows 7 and Windows Server® 2008 R2.