



Fanless, small form factor  
management server

## ADDERLink INFINITY Manager

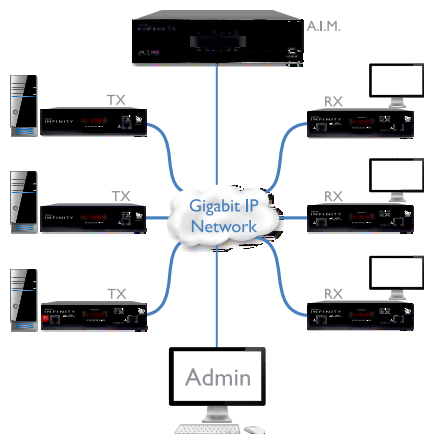
AdderLink Infinity Matrix management server (A.I.M.)



### PRODUCT IN BRIEF

The A.I.M. management server is a control suite which transforms AdderLink Infinity extenders into a digital matrix solution. Using standard IP network switches it is possible to route any user station to any computer attached to the network without any compromises to HD video quality or control. It also allows co-operative sharing of computers and multicasting of video to any destination.

- Intuitive, multi-lingual user interface
- Multiple switching methods
- User access rights
- Full audit trail
- Easy management
- Open API for third party control



### FEATURES - System administration

#### Easy matrix setup

Using Zero Configuration networking, A.I.M. automatically obtains the MAC addresses of extender devices as they are attached to the network. The administrator allocates IP addresses, names and locations so that devices are easy to identify, configure and control.

#### Administration dashboard

Accessed via a web browser, the dashboard gives the current overview of system connections and users. Tabs allow you to navigate between settings and device or user sub-menus.

#### User access management and audit trails

Administrators can manage access rights to each device on a user by user basis either manually through the web browser or automatically using Active Directory. Reports showing the history of devices, user logins and device connections can be viewed and exported to a CSV file.

#### Control Channel and Presets connections

A.I.M. can be used to make connections between any pair of transmitter and receiver devices centrally from within the management system. Using Presets, a list of pre-defined connections, multiscreen, video wall or signage setups can be activated with a single click.

#### Centralized firmware upgrades

As well as managing its own firmware upgrade, A.I.M. manages the upgrade of each device on the network and can

deploy firmware to hundreds of devices at the same time, meaning a system-wide upgrade takes only a few minutes.

### FEATURES - Intuitive User Interface

#### On screen display at each user station

Users login and choose channel connections from an intuitive OSD similar to that of a Digital TV. Users can also use Presets to change channels for multiple screens across multiple receivers.

#### Favorites and hotkey switching

Each user can select their favorite channels within the OSD and allocate a hotkey for fast switching between channels.

#### Choice of connection modes

Administrators can choose to give users the ability to connect in three modes: View only, Shared or Exclusive. Each permitted mode is then made available within the OSD.

#### Fast video and USB switching

The video switching time between computers is less than one second with up to a further two seconds to connect the USB to support its full capabilities.

#### Open API for third party control systems

Adder publishes a simple API structure to allow easy integration with other third party control systems supplied by companies such as HRS, AMX, Crestron or MediaLon.

# ADDERLink INFINITY Manager

AdderLink Infinity Matrix management server (A.I.M.)

## FEATURES continued...

### Remote OSD

Enables users to push content to any screen on the network to which they have permission.

### International language support

The OSD now supports 12 international languages and fonts, including Chinese (simplified and traditional), Japanese, Korean, Russian and 7 European languages. Localized help menus are also included.

## FEATURES - Miscellaneous

### International keyboard selection

The user desks can select different keyboard configurations to suite their keyboard requirements.

### Channels

Considered as a Virtual Transmitter, a channel may combine Video, Audio and USB from different transmitters as a single source. Ideal where audio alerts or mixed video sources are required.

### Multicasting

Network multicasting allows the system to share video simultaneously from one transmitter to an unlimited number of receivers. Suitable for signage, monitoring and sharing of desktops.

### USB Sharing

USB sharing allows multiple users to connect to and control a single computer at the same time. Each transmitter can report 12 unique USB devices (identified by VID/PID codes) but will merge devices with the same ID to allow many more.

### System backups

Backups of the database can be saved internally, externally or emailed automatically. Automatic updates can be scheduled on an hourly, daily or weekly basis.

### LDAP integration

To help ease setup, the system has an LDAP interface so users and passwords from other systems can easily be imported.

### Refresh protocol

The A.I.M. interface is continually refreshed so the information given is always up to date. All changes made to device settings and user access rights are made instantly.

## ORDERING INFORMATION

ALIF-AIM-XX: Matrix Manager with unlimited end points  
ALIF-AIM-8-XX: Matrix Manager limited to 8 end points  
ALIF-AIM-16-XX: Matrix Manager limited to 16 end points  
ALIF-AIM-8-UPG16: Upgrade license from 8 to 16 end points  
ALIF-AIM-8-UPGFULL: Upgrade license from 8 to unlimited end points  
ALIF-AIM-16-UPGFULL: Upgrade license from 16 to unlimited end points

XX	= Mains Lead Country Code:
UK	= United Kingdom
US	= United States
EURO	= Europe
AUS	= Australia

## ADDITIONAL ACCESSORIES

VESA mounting bracket (with screws) is included in the kit

## RELATED PRODUCTS

Adder offer a vast range of products to suit your needs. Other products you may be interested in include:

**ADDERLink INFINITY**  
ALIF1000P; ALIF1000R;  
ALIF1000T



**ADDERLink INFINITY Dual**  
ALIF2002P, ALIF2000R,  
ALIF2002T



**ADDERLink INFINITY dual VNC**  
ALIF2112T



**ADDERLink INFINITY FX**  
ALIF2002P-SM;  
ALIF2002P-MM



## TECHNICAL SPECIFICATION

### Hardware

Industrial spec server with solid state memory.

### Software

Closed system.

### Physical design

Robust metal construction  
235mm/9.25" (w), 68mm/2.67" (h),  
196mm/7.7" (d), 1.4kg/3.1lbs.

### Power

IEC input to power adapter:  
100-240VAC 50/60Hz, 1.5A.  
Input to unit: 12VDC, 60W.

**Operating temperature**  
0 to 40°C / 32 to 104°F

### Approvals

CE, FCC.



© Copyright 2013 Adder Technology Ltd. All brand names and trademarks are the property of their respective owners. LM-ALIF\_AIM\_v3-1.indd

## ADDER TECHNOLOGY

Head Office  
Tel: +44 (0)1954 780044 Fax: +44 (0)1954 780081  
email: sales@adder.com www.adder.com

## ADDER CORPORATION

USA and Canada  
Tel: +1 888 932 3337 Fax: +1 888 275 1117  
email: usasales@adder.com www.adder.com

## ADDER ASIA

Asia Pacific  
Tel: +65 6288 5767 Fax: +65 6284 1150  
email: asiasales@adder.com www.adder.com

