



Secure KVM CATx Switches  
with BIOS-level control

## ADDERVIEW CATx Series

Secure KVM CATx Switches with BIOS-level control of up to 24 multiplatform servers



### PRODUCT IN BRIEF

The AdderView CATx Series is a range of secure, KVM via CATx switches that provide 4 concurrent local, remote or global users with BIOS-level control of up to 24 multiplatform servers. A 'plug-and-play', 1U appliance, the AdderView CATx is a completely self-contained system that installs in minutes combining high security, flexibility, integrated remote power control, faultless quality video and optional CD quality audio.

The two members of the series are the AdderView CATx supporting 16 or 24 CATx computer connections, 4 simultaneous users (1x local PS/2 or USB, 4 x remote over CATx) and the AdderView CATx IP supporting 16 or 24 CATx computer connections, 4 simultaneous users (1x local PS/2 or USB, 2 x remote over CATx, 1 x global over IP).

### FEATURES

#### Faultless video quality

The AdderView CATx series provides exceptionally high video performance to local, remote and global users alike, supporting up to 1900x1440 resolutions with DDC emulation (1600x1200 on IP links).

#### True multi-platform support

The AdderView CATx series supports PS/2, USB and Sun. Country code reporting, DDC and keyboard and mouse emulation ensure faultless operation.

#### PS/2 or USB keyboard and mouse control

Any PS/2 or USB style keyboard and mouse maybe used to control the AdderView CATx series.

#### Easy cascade

Expand using CATx cascade connections with simple user intuitive set up.

#### Optional CD quality audio

The AdderView CATx switches provide CD quality audio to users when optional audio enabled CIM modules are used.

#### Power control

Providing complete reboot function, the

AdderLink CATx series interfaces with power switches via a dedicated RS232 port.

#### Local User

- Choice of PS/2 or USB keyboard and mouse control.

#### Remote User

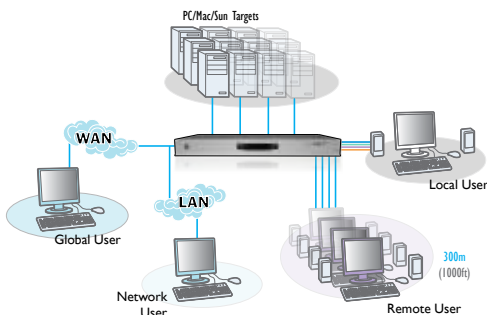
- Up to 300m from computer using Adder extenders.

#### Global User (IP)

- Employing enterprise grade security (using AES 128 bit encryption and RSA 2048 bit public key authentication).
- Use Java web browser or Real VNC client software that, unlike HTTPS web browsers, is designed specifically for secure, high performance KVM via IP applications.
- Up to 1600x1200 resolutions with scalable windows.

#### Computer Interface Modules

- Flash upgradeable CIMs available for PS/2, USB and Sun keyboard and mouse support with optional audio.



# ADDERVIEW CATx Series

Secure KVM CATx Switches with BIOS-level control of up to 24 multiplatform servers

## ABOUT ADDER

Adder is a leading developer and thought leader in connectivity solutions. Adder's advanced range of KVM switches, extenders and IP solutions enable the control of local, remote and global IT systems across the enterprise. The company distributes its products in more than 60 countries through a network of distributors, resellers and OEMs. Adder has offices in the United States, United Kingdom, Germany, the Netherlands, Sweden, China and Singapore.

To find out more, visit:  
<http://www.adder.com>.

## RELATED PRODUCTS

Adder offer a vast range of products to suit your needs. Other products you may be interested in include:

**ADDERView CATxIP 5000**  
AVX5016IP



**ADDERView CATx IP**  
AVX4016; AVX4016IP;  
AVX4024; AVX4024IP



**ADDERView CATxIP 1000**  
AVX1008IP; AVX1016IP



**ADDERView IP**  
AVIP208; AVIP216



## TECHNICAL SPECIFICATIONS

### Hardware compatibility

Supports PC, Sun (USB & 8-pin styles), Mac (USB), RS/6000, Alpha and SGI computers using PS/2, USB or Sun computer interface modules

### Software compatibility

Operates with all known software and operating systems including Windows (all); DOS; Linux, Unix, BSD; all Sun OS; all Mac OS; NetWare

### Computer and remote CATx user connections

All RJ45 style

### Local KVM console connection

Video: HDD15. Keyboard/Mouse: MiniDin6 / USB type A. Audio: 3.5mm stereo jack

### Network port (AdderView IP models only)

RJ45 10/100Mb auto-sensing Ethernet port

### Physical design

AdderView CATx: 1U high metal case 482mm/19" (w), 215mm/8.5" (d), 45mm/1.8" (h) AdderView CATxIP: 1U high metal case 482mm/19" (w), 280mm/8.5" (d), 45mm/1.8" (h) rack mount kits inc

### Power connection

IEC style power lead (100 – 240V AC, 50-60Hz). Redundant via 2.5mm DC jack (5V DC, 4A)

### Other connectors

DB9 female for flash upgrade, syncing boxes and other special functions. DB9 male for RS232 triggered power switches. DB9 Male (AdderView IP only) for modem connection

## ORDERING INFORMATION

### AdderView CATx IP

CATx IP - 16 port version: **AVX4016IP-XX**

CATx IP - 24 port version: **AVX4024IP-XX**

### AdderView CATx

CATx - 16 port version: **AVX4016-XX**

CATx - 24 port version: **AVX4024-XX**

XX = Mains Lead Country Code:  
UK = United Kingdom  
US = United States  
EURO = Europe  
AUS = Australia

## ADDITIONAL ACCESSORIES

CAM - Computer Access Modules:

PS/2 only: **CATX-PS2**

PS/2 plus audio: **CATX-PS2-A**

USB only: **CATX-USB**

USB plus audio: **CATX-USB-A**

Sun with audio: **CATX-SUNA**

Adder X100/X200 Extender products: **X100/R, X100A/R, X100AS/R, X200/R, X200A/R, X200AS/R**

Slave Power Switches for connection to AdderView CATx IP or master power switch: **PSUB-SLAVE**

Master Power Switch for connection to AdderView CATx IP or standalone Ethernet operation: **PSU-8MASTER**



Example CAM: CATX-USB-A

## Operating temperature

0°C to 40°C / 32°F to 104°F

## Approvals

CE, FCC



© Copyright 2010 Adder Technology Ltd. All brand names and trademarks are the property of their respective owners. AH-avx4016\_avx4024\_avx4016ip\_avx4024ip\_v1JD

## ADDER TECHNOLOGY

Technology House, Trafalgar Way, Bar Hill, Cambridge, CB23 8SQ UK  
Tel: +44 (0)1954 780044 Fax: +44 (0)1954 780081  
email: [sales@adder.com](mailto:sales@adder.com) [www.adder.com](http://www.adder.com)

## ADDER CORPORATION

29 Water Street  
Newburyport, MA 01950 USA  
Tel: +1 888 932 3337 Fax: +1 888 275 1117  
email: [usasales@adder.com](mailto:usasales@adder.com) [www.adder.com](http://www.adder.com)

## ADDER TECHNOLOGY ASIA PACIFIC

6 New Industrial Road  
#07-01 Hoe Huat Industrial Building, Singapore 536199  
Tel: +65 6288 5767 Fax: +65 6284 1150  
email: [asiasales@adder.com](mailto:asiasales@adder.com) [www.adder.com](http://www.adder.com)



# ADDER®