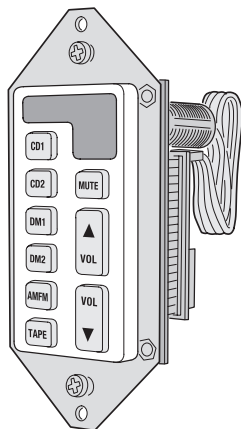


MCS-1A

Zone Controller

For Use with the
Model MDS-6A Music
Distribution System

Installation & Operation Instructions



Linear LLC

2055 Corte Del Nogal, Carlsbad, CA 92009, USA
760-438-7000 800-999-5225 fax: 760-931-1340

www.channelplus.com

© 2004 Linear LLC, Carlsbad, CA, USA

2. COMPONENT LOCATIONS

INFRARED RECEIVER WINDOW

- Receives IR from handheld remotes
- IR is passed through to MDS-6A

AUDIO SOURCE BUTTONS

- Press to select audio source
- Selected source button lights red
- Push for 5 seconds to select "Whole-house-music" feature

MUTE BUTTON

- Press to mute the local speakers
- Lights red when source is muted
- Lights yellow during "Do-not-disturb"
- Push for 5 seconds to switch MDS-6A power off
- Push with VOL-DOWN to select "Do-not-disturb" feature

VOLUME BUTTONS

- Press VOL-UP for louder local speakers
- Press VOL-DOWN for quieter local speakers

1. PRODUCT DESCRIPTION

The MCS-1A Zone Controller is designed as an in-room control for the MDS-6A Music Distribution System. The MDS-6A distributes amplified audio from up to six sources to up to six speaker zones. In a typical installation, an MCS-1A Zone Controller (or MCS-2A Programmable Zone Controller) would be installed in each listening room or location to control the speakers in that zone. The MCS-1A mounts in a standard single-gang electrical box and is covered by a standard Decora™ wall plate (neither item is included with the controller).

The MCS-1A Zone Controller's source keys are used to select which audio source device (CD, TUNER, TAPE, DVD, DBS, TV, etc.) will be played from its specific speaker zone. The speaker's volume can be adjusted, or muted, using the keys on the Zone Controller. Any infrared remote control code sent to the MCS-1A from a handheld remote will be repeated to source devices through the MDS-6A.

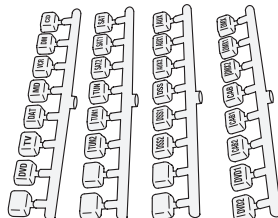
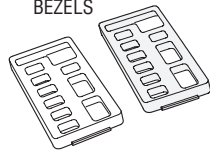
Two special features are available for each Zone Controller. The "whole-house-music" feature will play a selected audio source from all of the system's speaker zones. The "do-not-disturb" feature prevents a speaker zone from responding to "whole-house-music" commands from other Zone Controllers and mutes any system wide pages to that speaker zone.

The MCS-1A keys can light in three colors (green, red, & yellow) to show the status of the speaker zone. The optional key backlighting (selectable with dipswitch #1) lights all of the keys with a pleasant green glow. The audio source selection keys will light red to indicate the selected audio source. When "whole-house-music" is selected the designated audio source key lights yellow. The MUTE key normally lights green, then lights red when the speaker zone is muted. The MUTE key blinks yellow when "do-not-disturb" feature is active for the speaker zone and lights yellow when "do-not-disturb" is active and the speaker zone is muted.

3. ACCESSORIES

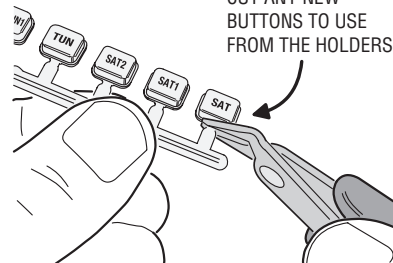
THE CONTROLLER'S BEZEL CAN BE CHANGED TO WHITE OR IVORY
AND SOURCE BUTTONS CAN BE CUSTOMIZED TO MATCH THE INSTALLATION

WHITE &
IVORY
BEZELS

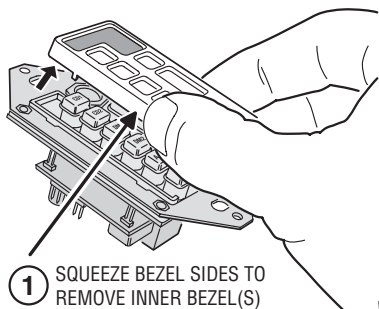


ALTERNATE
SOURCE
BUTTONS

CUT ANY NEW
BUTTONS TO USE
FROM THE HOLDERS

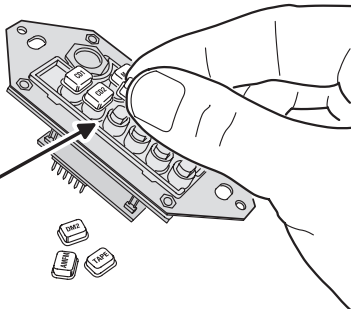


4. CUSTOMIZE THE SOURCE BUTTONS



THE SOURCE BUTTONS AND BEZEL CAN
BE CHANGED TO SUIT THE INSTALLATION

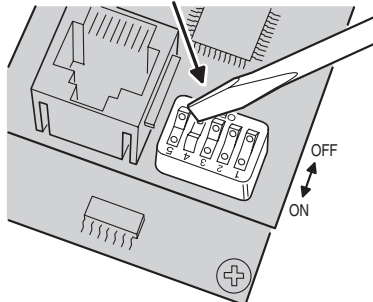
- 1 SQUEEZE BEZEL SIDES TO
REMOVE INNER BEZEL(S)
- 2 PLACE NEW BUTTONS
ON POSTS AND INSTALL
CHOSEN COLOR BEZEL



5. SET THE DIPSWITCH

SET THE DIPSWITCH TO ASSIGN THE CONTROLLER'S
SPEAKER ZONE NUMBER AND KEYPAD
BACKLIGHT OPTION

THE MCS-1A CONTROLLER'S SPEAKER ZONE
NUMBER MUST MATCH THE NUMBER OF THE MDS-6A
ZONE THAT THE CONTROLLER IS CONNECTED TO

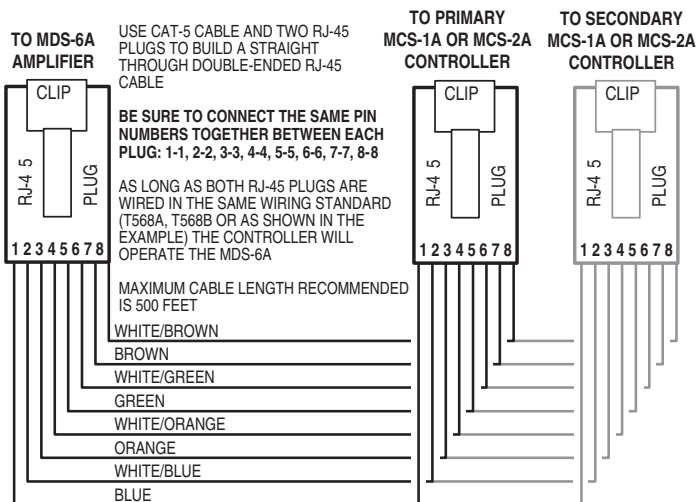


DIPSWITCH SETTINGS

1	2	3	4	5	ZONE
ON	ON	ON	OFF		ZONE 1
OFF	ON	ON	OFF		ZONE 2
ON	OFF	ON	OFF		ZONE 3
OFF	OFF	ON	OFF		ZONE 4
ON	ON	OFF	OFF		ZONE 5
OFF	ON	OFF	OFF		ZONE 6
#1 ON TURNS KEYPAD BACKLIGHT OFF					
#1 OFF TURNS KEYPAD BACKLIGHT ON					

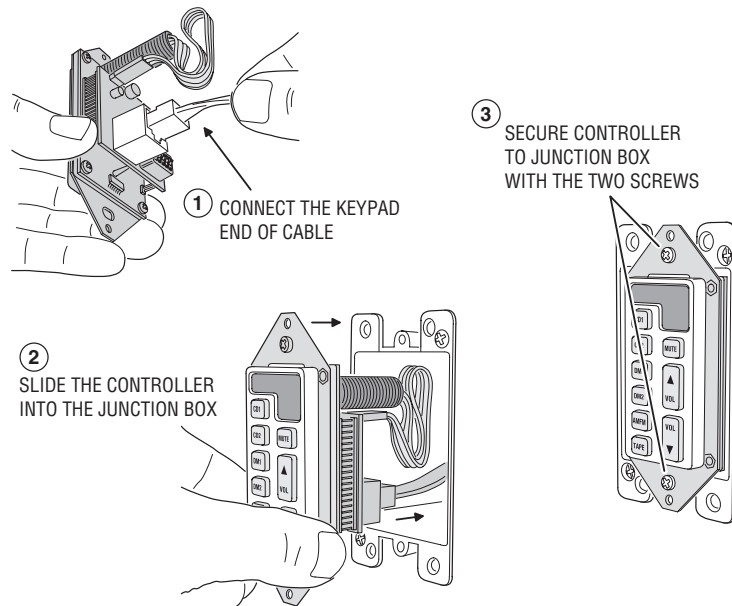
WHEN THE CONTROLLER IS ASSIGNED TO A SPEAKER ZONE USING THE DIPSWITCHES AND THE CONTROLLER IS PROPERLY WIRED AND PLUGGED INTO THE CORRESPONDING KEYPAD ZONE, A GREEN LIGHT WILL APPEAR ON THE FRONT OF THE MDS-6A WHEN A SERVICE IS SELECTED INDICATING THAT THE CONTROLLER HAS BEEN PROGRAMMED FOR THAT SPEAKER ZONE. WHEN THERE ARE TWO CONTROLLERS PER SPEAKER ZONE, BOTH CONTROLLERS WILL NEED TO HAVE THE SAME DIPSWITCH SETTINGS FOR THAT SPEAKER ZONE.
NOTE: DIPSWITCH #5 IS NOT USED

6. BUILD AND CONNECT THE CABLE

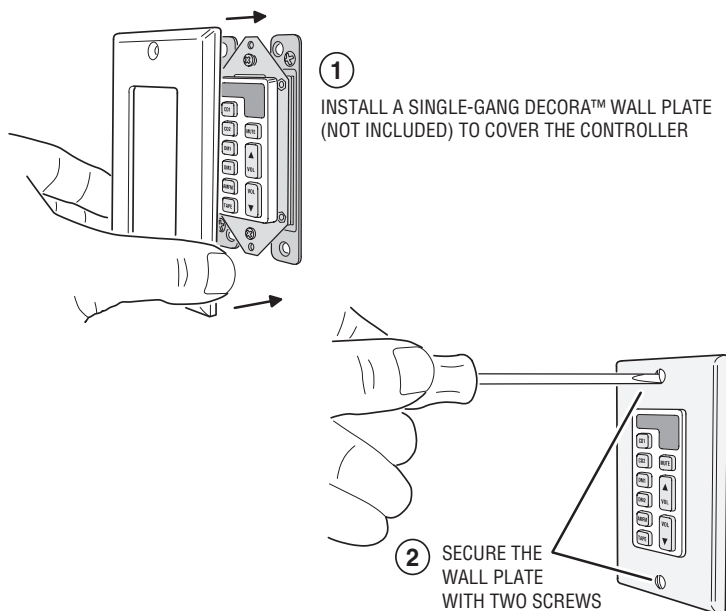


NOTE: UP TO TWO MCS-1A OR MCS-2A CONTROLLERS CAN BE CONNECTED IN PARALLEL TO THE SAME AMPLIFIER ZONE (WIRE ANOTHER CONTROLLER PLUG TO THE SAME CABLE). WHEN ADDING A SECOND CONTROLLER PER SPEAKER ZONE, FOLLOW THE SAME COLOR CODED CONNECTION FOR THE SECOND CONTROLLER.

7. INSTALL THE CONTROLLER INTO A SINGLE-GANG JUNCTION BOX



8. INSTALL THE WALL PLATE



9. BASIC OPERATION

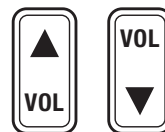
USING THE SOURCE BUTTONS

- Press any source button to turn the MDS-6A power on if it's off
- Press a source button to select the desired audio source for this controller's zone (the selected source button lights red)



USING THE VOLUME BUTTONS

- Press VOL-UP to increase the volume for this controller's speaker zone
- Press VOL-DOWN to decrease the volume for this controller's speaker zone



USING THE MUTE BUTTON

- Press MUTE to silence this controller's speaker zone (the MUTE button lights red)
- Press MUTE again to return this zone's speakers to their previous volume
- Push MUTE for 5 seconds to turn the MDS-6A power off



10. SPECIAL FEATURE OPERATION

USING THE WHOLE-HOUSE-MUSIC FEATURE

- Push a source button for 5 seconds to turn whole-house-music on or off
- The selected whole-house-music source button lights yellow
- The selected source will play through all system zones



USING THE DO-NOT-DISTURB FEATURE

- Push and hold the VOL-DOWN button, then press the MUTE button to turn the do-not-disturb feature on or off (the MUTE button lights yellow when on)
- When do-not-disturb is on, the zone will **not** play whole-house-music or paging tones



LIMITED WARRANTY

Linear LLC warrants this product to be free from defects in material and workmanship for 2 years. The time period will be measured using the date code labeled on the product. Linear LLC is not responsible for damage to the product resulting from the buyer's improper handling, stocking or warehousing of the product. Any implied warranty arising from the sale of the product including implied warranties of merchantability and fitness for purpose are limited. Linear LLC shall not be responsible for any losses, damages or expenses, whether direct, consequential, or incidental arising from the use or the inability to use the product. Some states and countries do not allow limitations on how long an implied warranty lasts or the exclusion or limitation or incidental or consequential damages, so the above exclusions may not apply. The Linear LLC warranty gives specific legal rights in addition to other rights, which may exist and vary from state to state and country to country.

The warranty is limited to repair or replacement of products returned, freight prepaid, to Linear LLC, there is NO PROVISION FOR LABOR COST OR OTHER REIMBURSEMENTS OF ANY KIND.

- Failures due to product abuse, such as negligence, improper use, and electrical surge including damage from lightning, water damage or other damage due to natural disasters are not covered by the warranty. The most common form of product abuse is surge damage caused by lightning.
- The warranty shall also be voided by any tampering with the date code, labels or other markings on the product.
- Products that are damaged in transit to Linear LLC due to improper packaging or by the carrier (shipping company) will not be covered under the warranty. If the product was damaged or lost by the carrier, it is the sender's responsibility to create a claim against the carrier.
- The user is responsible for all labor costs associated with removing, reinstalling and returning the product to Linear LLC.

Linear LLC, at its option, will repair or replace the defective product. Replacements will be made from B-Stock, if an exact replacement is not available, Linear LLC, at its option, will select the nearest equivalent product. The user is responsible for freight charges to Linear LLC. Linear LLC will return warranted repaired or replacements by UPS Ground or an equivalent service. A customer may pay the additional costs for second-day or next-day service. All products returned for warranty service require a Return Product Authorization Number (RPA#). Contact Linear Technical Services at 1-800-999-5225 for an RPA# and other important details.