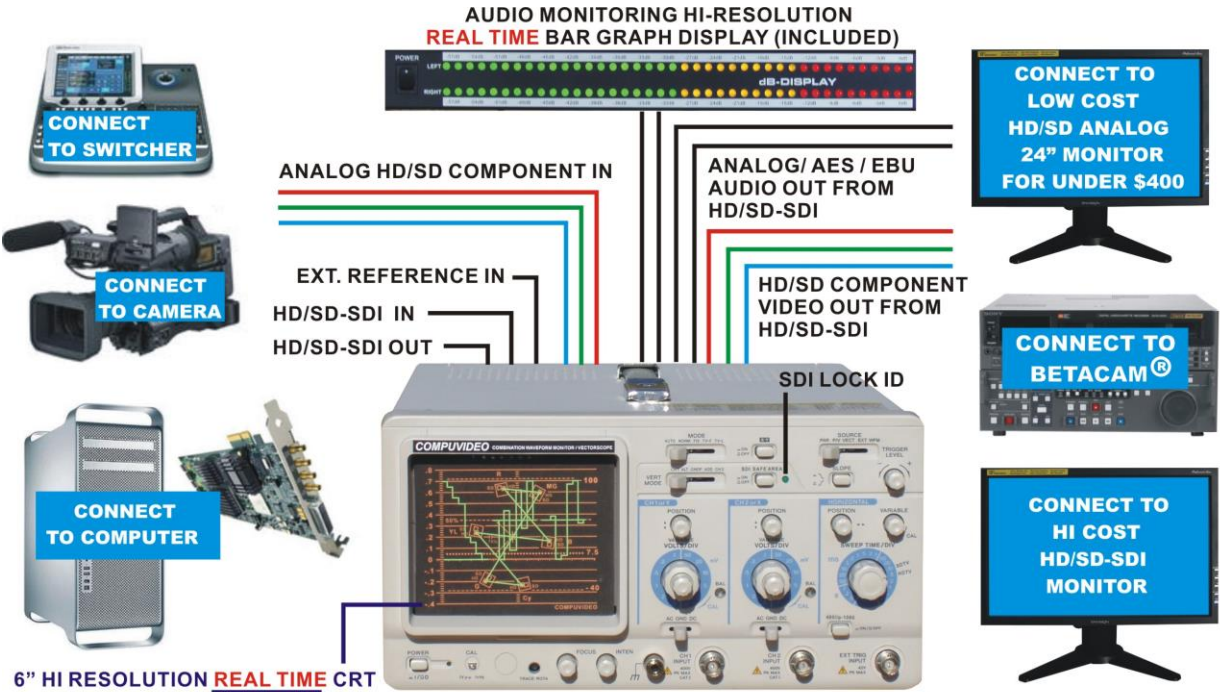
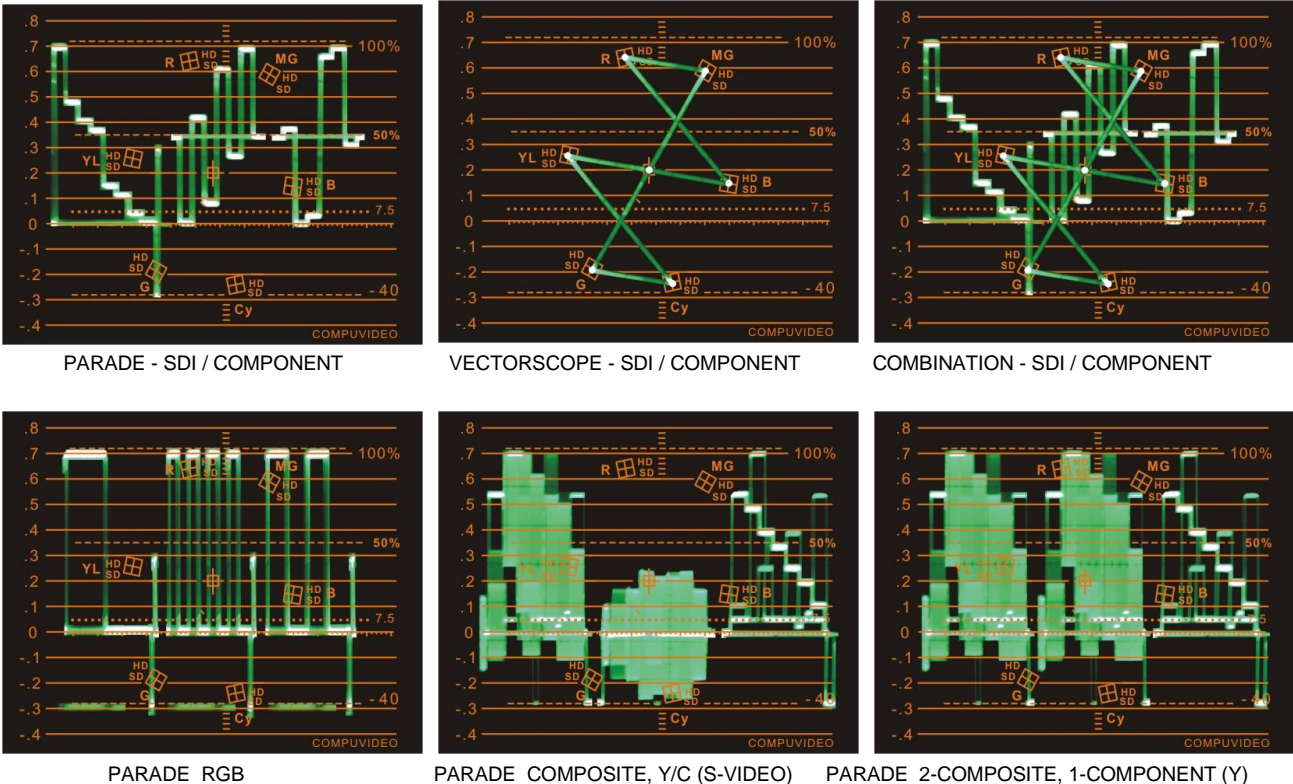


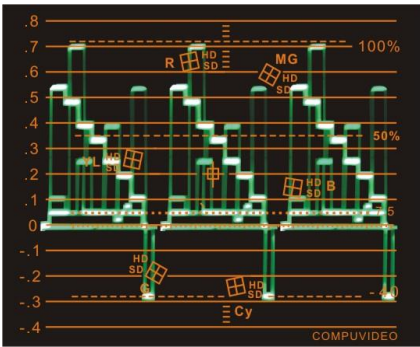
# COMPUVIDEO®

## MULTI-FORMAT HD/SD-SDI WAVEFORM MONITOR and VECTORSCOPE

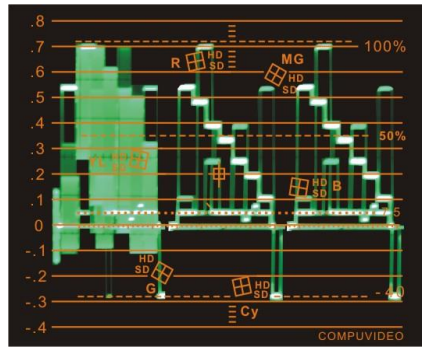


### GO GREEN ... GO CRT QUALITY

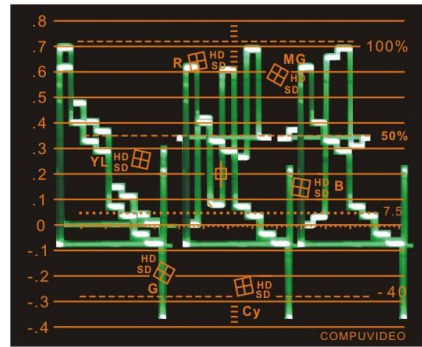




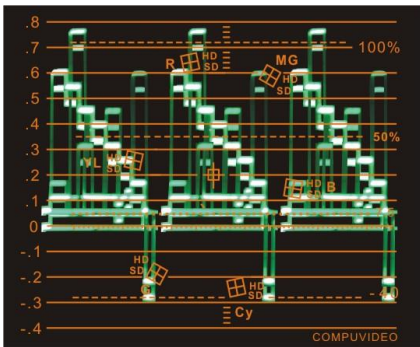
PARADE 3-COMPONENT (Y)



PARADE 1-COMPOSITE, 2-COMPONENT (Y)



HD-EXTERNAL REFERENCE



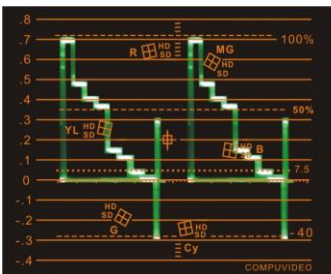
SD-EXTERNAL REFERENCE

**Picture worth a thousand words.** The quality of these Waveforms and Vectors speak for themselves. CRT offers highest possible Real Time Resolution with Native non-digitized Waveforms and Vectors for 100% reproduction of Every Detail in Real Time.

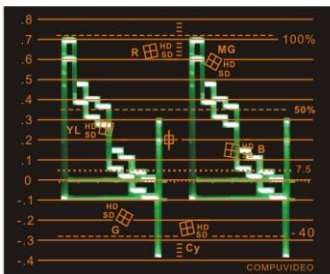
All units made to work under extreme conditions: generating very low heat - assuring non-stop operation and protected by metal enclosure from interference.

**SVR-1750HSD** Multi-SDI Waveform/Vectorscope  
**SVR-1700HSD** Multi-SDI & Analog Waveform/Vectorscope  
**SVR-1780HSD** Multi-SDI, Waveform  
 19" Rack Mount

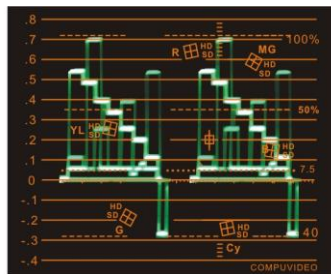
### SVR-1780HSD Waveform Displays



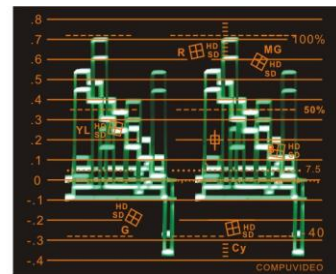
HD-SDI



HD-SDI & EXTERNAL



SD-SDI



SD-SDI & INTERNAL

**SVR-1700HDSD** is Digital 3Gb/s Multi-SDI and Component Waveform Monitor / Vectorscope with 6" Hi-Resolution CRT, NTSC & PAL, HD-SDI / SD-SDI Digital Signal Data Alarm Lock ID, External Reference Input for Timing and Genlock. Additionally SVR-1700HDSD includes HD/SD-SDI Digital Component Encoder, Re-Clocked and buffered HD-SD / SD-SDI Output, Embedded HD/SD-SDI 16-CH Selectable Analog / AES / EBU Audio Out.

### **HIGHLIGHTS**

- HD/SD-SDI Input
- HD/SD-SDI Output
- HD/SD-SDI Component HD/SD Analog Video Encoder
- HD/SD-SDI Lock ID
- HD/SD-SDI Audio Hi-Resolution Display
- RGB inputs for Color Space Gamut Display
- Y, Cb, Cr / Y, R-Y, B-Y inputs for HD/SD Component Video
- Accurate Y,Cb,Cr Color Space Conversion for Color RGB Gamut Display
- Gamut / Color - Actual Hi-Resolution Real Time Parade Waveforms Display
- Composite / S-Video Inputs (monitor Composite and Y (S-Video) Waveforms (3-at the same time)
- External Reference Input
- 16-CH Analog and AES / EBU Balanced Audio
- Broadcast quality video and audio outputs to Component HD/SD Monitor or any other equipment
- Hi-Resolution 6" CRT - Real Time Technology

**SVR-1750HDSD** is Digital 3Gb/s Multi-SDI Waveform Monitor / Vectorscope with 6" Hi-Resolution CRT, NTSC & PAL, HD-SDI / SD-SDI Digital Signal Data Alarm Lock ID, External Reference Input for Timing and Genlock. Additionally SVR-1750HDSD includes HD/SD-SDI Digital Component Encoder, Re-Clocked and buffered HD-SD / SD-SDI output, Embedded HD/SD-SDI 16-CH Selectable Analog / AES / EBU Audio Out

### **HIGHLIGHTS**

- HD/SD-SDI Input
- HD/SD-SDI Output
- HD/SD-SDI Component HD/SD Analog Video Encoder
- HD/SD-SDI Lock ID
- HD/SD-SDI Audio Hi-Resolution Display
- Accurate Y,Cb,Cr Color Space Conversion for Color RGB Gamut Display
- Gamut / Color - Actual Hi-Resolution Real Time Parade Waveforms Display
- External Reference Input
- 16-CH Analog and AES / EBU Balanced Audio
- Broadcast quality video and audio outputs to Component HD/SD Monitor or any other equipment
- Hi-Resolution 6" CRT - Real Time Technology

**SVR-1780HDS** is Digital 3Gb/s Multi-SDI Waveform Monitor with 6" Hi-Resolution CRT, NTSC & PAL, HD-SDI / SD-SDI Digital Signal Data Alarm Lock ID, External Reference Input for Timing and Genlock. Additionally SVR-1780HDS includes HD/SD-SDI Digital Component Encoder, Re-Clocked and buffered HD-SD / SD-SDI output, Embedded HD/SD-SDI 16-CH Selectable Analog / AES / EBU Audio Out

**HIGHLIGHTS**

- HD/SD-SDI Input
- HD/SD-SDI Output
- HD/SD-SDI Component HD/SD Analog Video Encoder
- HD/SD-SDI Lock ID
- HD/SD-SDI Audio Hi-Resolution Display
- Accurate Y,Cb,Cr Color Space Conversion for Color RGB Gamut Display
- Gamut / Color - Actual Hi-Resolution Real Time Parade Waveforms Display
- External Reference Input
- 16-CH Analog and AES / EBU Balanced Audio
- Broadcast quality video and audio outputs to Component HD/SD Monitor or any other equipment
- Hi-Resolution 6" CRT - Real Time Technology

**24" LCD HD/SD MONITOR UNDER \$400.00** is optional, 10000:1 Dynamic Contrast, 480i/p, 720p,1080i/p, 1920 x 1200 Resolution, 16.2M Excellent Color Reproduction, 5ms Response Time, and Dolby Digital Sound.

This Monitor Combined with Compuvideo SVR-1700HDS, SVR-1750HDS or SVR-1780HDS provides

Cost Effective Solution for Video / Audio Broadcast and Professional Analog and Digital Video Editing Equipment as well as Video Production and Post-Production Systems.

**COMPUVIDEO SVR-1700HDS Specifications:**

<b>WAVEFORM MONITOR/VECTORSCOPE</b>	
Formats 525i:	59.94 Hz
Formats 625i:	50 Hz
Formats 1080i:	60, 59.94, 50 Hz
Formats 1080p:	30, 29.97, 25, 24, 23.98 Hz
Formats 1080PsF:	30, 29.97, 25, 24, 23.98 Hz
Formats 720p	60, 59.94, 50, 30, 29.97, 25, 24, 23.98 Hz
Standards:	SMPTE 292M, 259M-C
Component In/Out	6-BNC - Y,(Cr) (R-Y), (Cb) (B-Y), RGB (and/or Composite , Y/C - Waveform)
HD/SD SDI Input:	1- BNC Input HD/SD-SDI
HD/SD SDI Out:	1- BNC Out Active Re-Clocked Buffered
Y, Pb, Pr Out to HD/SD Equip/Monitor:	Encoded HD/SD-SDI to 3-BNC Component Output
Embedded Audio HD/SD-SDI:	16-CH Selectable Analog/AES/EBU Balanced Audio Out
External Reference:	HD/SD-Analog
Power:	Universal 100-240 V, 50/60Hz
Accessories:	1-HD/SD-SDI Cable, Power Cord
Weight / Size:	19 lbs / 6.5 (H) x 11.5 (W) x 15.5 (D)
19" Rackmount is Optional	Included: Metal enclosure / Tilt Stand / Handle

**COMPUVIDEO SVR-1750HDS Specifications:**

<b>WAVEFORM MONITOR/VECTORSCOPE</b>	
Formats 525i:	59.94 Hz
Formats 625i:	50 Hz
Formats 1080i:	60, 59.94, 50 Hz
Formats 1080p:	30, 29.97, 25, 24, 23.98 Hz
Formats 1080PsF:	30, 29.97, 25, 24, 23.98 Hz
Formats 720p	60, 59.94, 50, 30, 29.97, 25, 24, 23.98 Hz
Standards:	SMPTE 292M, 259M-C
HD/SD SDI Input:	1- BNC Input HD/SD-SDI
HD/SD SDI Out:	1- BNC Out Active Re-Clocked Buffered
Y, Pb, Pr Out to HD/SD Equip/Monitor:	Encoded HD/SD-SDI to 3-BNC Component Output
Embedded Audio HD/SD-SDI:	16-CH Selectable Analog/AES/EBU Balanced Audio Out
External Reference:	HD/SD-Analog
Power:	Universal 100-240 V, 50/60Hz
Accessories:	1-HD/SD-SDI Cable, Power Cord
Weight / Size:	19 lbs / 6.5 (H) x 11.5 (W) x 15.5 (D)
19" Rackmount is Optional	Included: Metal enclosure / Tilt Stand / Handle

### **COMPUVIDEO SVR-1780HDS Specifications:**

<b>WAVEFORM MONITOR</b>	
Formats 525i:	59.94 Hz
Formats 625i:	50 Hz
Formats 1080i:	60, 59.94, 50 Hz
Formats 1080p:	30, 29.97, 25, 24, 23.98 Hz
Formats 1080PsF:	30, 29.97, 25, 24, 23.98 Hz
Formats 720p	60, 59.94, 50, 30, 29.97, 25, 24, 23.98 Hz
Standards:	SMPTE 292M, 259M-C
HD/SD SDI Input:	1- BNC Input HD/SD-SDI
HD/SD SDI Out:	1- BNC Out Active Re-Clocked Buffered
Y, Pb, Pr Out to HD/SD Equip/Monitor:	Encoded HD/SD-SDI to 3-BNC Component Output
Embedded Audio HD/SD-SDI:	16-CH Selectable Analog/AES/EBU Balanced Audio Out
External Reference:	HD/SD-Analog
Power:	Universal 100-240 V, 50/60Hz
Accessories:	1-HD/SD-SDI Cable, Power Cord
Weight / Size:	19 lbs / 6.5 (H) x 11.5 (W) x 15.5 (D)
19" Rackmount is Optional	Included: Metal enclosure / Tilt Stand / Handle