

75Ω Staggered Mid-size Video Patchbays

3G-ready mid-size video jacks allow for more efficient use of rack space.

Model	Panel Size	Loaded Video Jacks
32MD-ST	1RU	32 x MDVJ-STW
32MD-STs	1RU	32 x MDVJ-STs
32MD-ST-2U	2RU	32 x MDVJ-STW
32MD-STs-2U	2RU	32 x MDVJ-STs
32MD-ST-4U	4RU	96 x MDVJ-STW
32MD-STs-4U	4RU	96 x MDVJ-STs

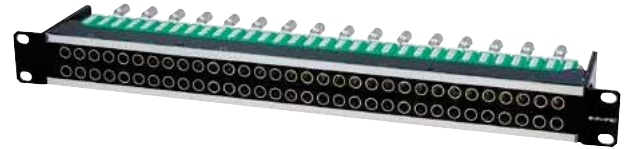
*Colors other than black are available on custom model basis except 4RU type (See page 65).

75Ω Staggered Mid-size Video Jacks

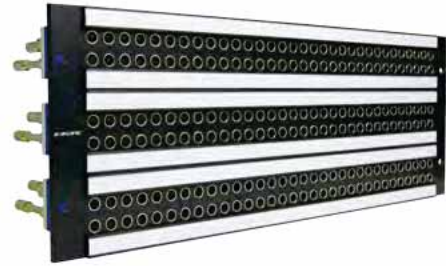
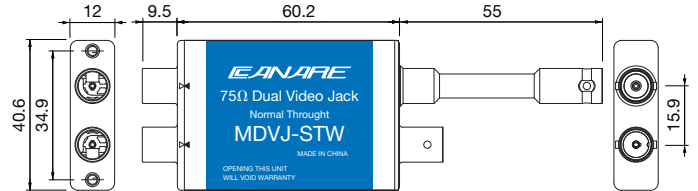
Model	Description
MDVJ-STW	Staggered Mid-size Video Jack, Normal Through
MDVJ-STs	Staggered Mid-size Video Jack, Straight Through
MVJ-DC	Dust cap for Mid-size video Jack (color: black 40pcs)

Key Features and Benefits

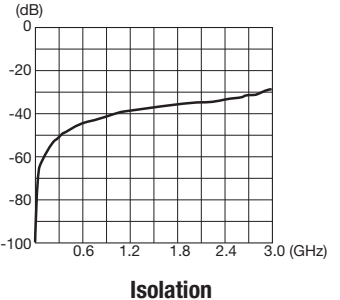
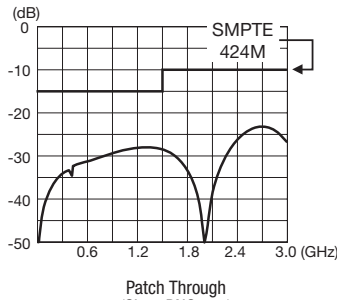
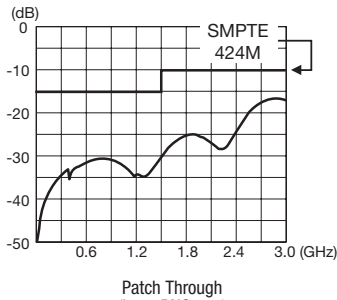
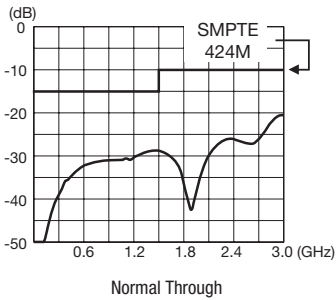
- 32 channels of I/O into 1RU or 2RU, 96 channels of I/O into 4RU.
 - Rotary switch has been improved for superior isolation.
 - Can be recessed 25mm (1RU, 2RU type).
 - Wide designation strip (2RU, 4RU type).
 - Lightweight aluminum alloy video jacks.
 - Industry standard BNC plugs can be used.
- Note :** Be sure to use with Mini-Weco video plug.



32MD-STs



32MD-ST-4U



Return loss for MDVJ-STW

Return Loss & Isolation

Model	Return Loss			Isolation
	BNC-BNC: Normal Through	BNC-VIDEO: Patch Through	BNC-Self Termination	
MDVJ-STW		26dB or greater (~750MHz)		35dB or greater (~1.5GHz) 20dB or greater (~3.0GHz)
		20dB or greater (~2.4GHz)		
		10dB or greater (~3.0GHz)		
MDVJ-STs	N/A	26dB or greater (~750MHz)	26dB or greater (~750MHz)	35dB or greater (~1.5GHz) 20dB or greater (~3.0GHz)
		20dB or greater (~2.4GHz)	20dB or greater (~1.5GHz)	
		10dB or greater (~3.0GHz)	10dB or greater (~3.0GHz)	