

Model Selection Guide

16 1U - BJR

Connector Quantity
16, 32

Panel Height
1U = 1 Rack Unit
19" x 1.7"

2U = 2 Rack Unit
19" x 3.5"

Connector
BJR = BCJ-JR
FJR = FJ-JR
RJS = RJ-R
RJBR = RJ-BCJR

Type
BNC-BNC
F-F
RCA-Solder
RCA-BNC



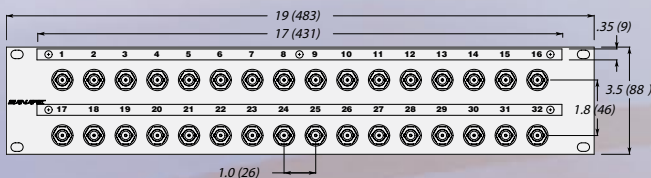
BJR Rear Dimensions



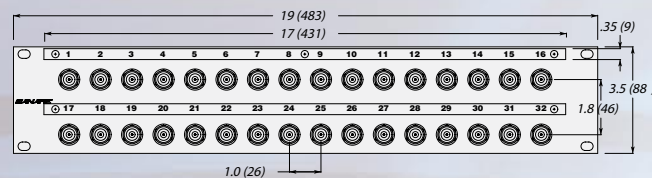
FJR Rear Dimensions



322U-BJR Dimensions



322U-FJR Dimensions



75Ω OEM PCB Mount Connectors

Applications

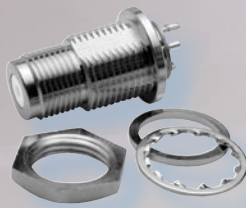
- OEM'S
- HDTV equipment
- TelCo broadband
- NTSC analog video
- Satellite headend

Features

1. 75 Ohm impedance, ≥26 dB Return Loss; DC to 1GHz (≤VSWR 1.1)
2. Variety of configurations
3. Securely mounts to PCB with Chassis Support
4. Gold Plated Beryllium Copper center contact

Benefits

1. Professional quality
2. The perfect connector for your application
3. Easy installation, durability assured
4. Excellent transmission quality



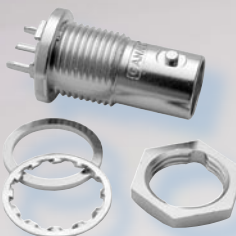
FJ-FPC



BCJ-RZCP



BCJ-BPC2P



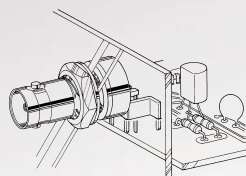
BCJ-FPC02



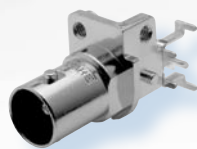
BCJ-FPLHA



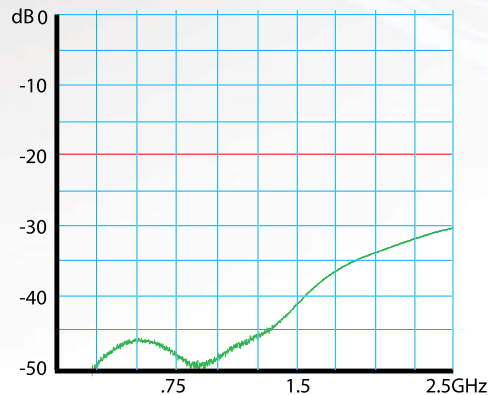
BCJ-RPLH



BCJ-FPLV01 Mounted



BCJ-BPLH



BCJ-BPLH Return Loss

Model	Description
BCJ-BPC2P	BNC PC mount receptacle, dual type
BCJ-BPLH	BNC jack, Rt. angle(screw mounted) RoHS
BCJ-FC1	BNC Conn. frt chassis mount (1/2")
BCJ-FC1-7/16	BNC Conn. frt chassis mount (7/16")
BCJ-FPC	BNC Conn. frt chassis mount straight
BCJ-FPC02	BNC Conn. frt chassis straight, die cast
BCJ-FPLHA	BNC Conn. frt chassis mnt rt angle
BCJ-FPLV01	BNC Conn. frt chassis mnt rt angle
BCJ-RPC	BNC Conn. rear chassis mount straight
BCJ-RPC/1	BNC Conn. rear chassis mount straight
BCJ-RPLH	BNC Conn. rear chassis mnt rt angle
BCJ-RPLV	BNC Conn. rear chassis mnt rt angle
BCJ-RZCP	BNC Receptacle and Push-on Plug
FJ-FPC	F PC Mount Receptacle