



3 Position Brake Lock System

All R-Series models include a 3-position brake lever:

FREE SPOOL: (Position 1)

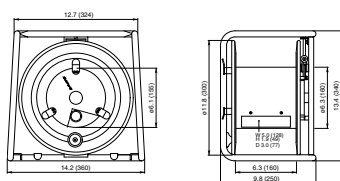
cable will pull from reel with ease, this position is ideal for rewinding,

SOFT BRAKE: (Position 2)

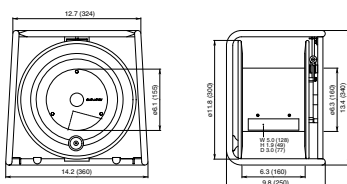
cable can be pulled from the reel, but friction prevents excess spillage when cable is pulled quickly,

FULL LOCK: (Position 3)

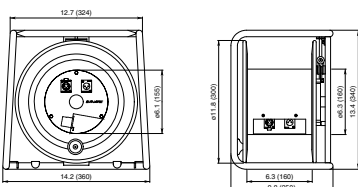
used during transportation, the reel will not rotate, so cable will not spill.



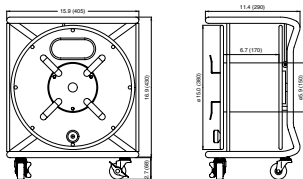
R300S



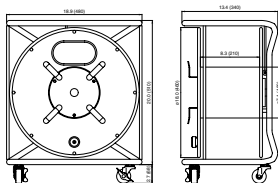
R300L



R300CN / R300BN

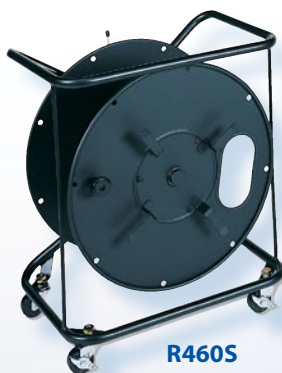


R380S



R460S

Cable Reels



R460S



R300S

Special Features

Durable long lasting black finish
Rugged winding handle
Roll-around removable casters
Snake cable hanger tabs
Exit flange port for snake ends



Stackability

All R300 series models have built in stacking tabs, so Cable Reels can be placed one on top of the other for secure transporting and storage.



Special Connector Mounting Plates

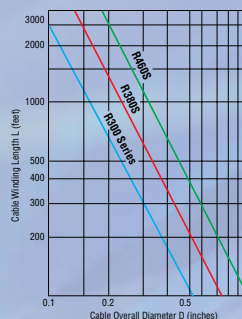
The R300L features a special User removable recessed Flange Door and Hub Plate for mounting BNC, F, RCA, or XLR Panel receptacles.

Tubular Steel Construction

Canare Cable Reels are constructed using tubular steel, with an "E" shaped brace design which makes them all extremely durable. All R-Series Reels use heavy duty permanently lubricated bearings which will perform as new even after years of hard road use.



Please use the capacity chart and/or formula to determine length of a given cable that will fit on a specific reel. Formulas are based on loose wrap winding.



Calculation Formula

$$\begin{aligned} \text{R300 (S,L,CN,BN)} \quad L &= \frac{43}{D^2} \times 0.6 \text{ (ft)} \\ \text{R380S} \quad L &= \frac{93}{D^2} \times 0.6 \text{ (ft)} \\ \text{R380D} \quad L &= \frac{82}{D^2} \times 0.6 \text{ (ft)} \\ \text{R460S} \quad L &= \frac{172}{D^2} \times 0.6 \text{ (ft)} \\ \text{R460C} \quad L &= \frac{148}{D^2} \times 0.6 \text{ (ft)} \end{aligned}$$

Formula Example:

L-4E3-8P Cable O.D. is .603"
 $93 \div (.603 \times .603) \times .6 = 155$
An R380S Cable Reel will hold approx. 155 feet of CanareL-4E3-8P Star Quad multichannel cable.



CR100-CN
(with 100m cable)
L-4E6S (EC100)
bundled with
R300-CN. (Set
with XLR3-11C
at the cable outer
end when sold.)

CR90-BN
(with 90m cable)
L-5C2VS (DH5C90-S)
bundled with
R300-BN.

CR100-S
(with 100m cable)
L-4E6S (EC100)
bundled with
R300-S. (Set with
XLR3-11C
at the cable
outer end
when sold.)

Reel with Cable Assembly				
Detachable Cable		Cable Assemblies		Weight (kg)
Model	Cable Reel	Set at inner end	Set at outer end	
CR100-CN	R300-CN	XLR3-12C	XLR3-11C L-4E6S(100m)	9.6
CR100-S	R300-S	XLR3-12C	XLR3-11C L-4E6S(100m)	9.6
CR90-BN	R300-BN	BCP-H5B	BCP-H5B L-5C2VS(90m)	10.5

Cable Reel Specifications							
Model	Size	Weight lbs.	Stackable	Casters	Connector Mounting	Cable Cut-Out	Hanger
R300S	SMALL	9.5	YES	NO	NO	YES	YES
R300L	SMALL	9.5	YES	NO	Hub & Flange	NO	NO
R300CN	SMALL	9.5	YES	NO	Parallel wired M & F XLR on Hub & Flange	NO	NO
R300BN	SMALL	9.5	YES	NO	75Ω BNC Jack 1ea.Hub & Flange	NO	NO
R380S	MED.	17.5	NO	YES	NO	YES	YES
R380D	MED.	17.5	NO	YES	Hub	NO	NO
R460S	LARGE	22.0	NO	YES	NO	YES	YES
R460C	LARGE	22.0	NO	YES	Hub	NO	NO