



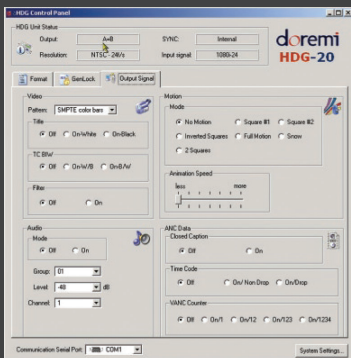
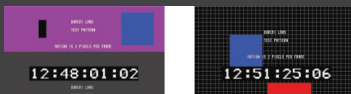
Technology Leadership
for Digital Cinema

HDG-20

Portable Video Test Generator

Key Features:

- + Multi-Format Output
- + Still & Moving Test Patterns
- + Audio Tone
- + Time Code
- + Closed Caption
- + Dual Link 2K Output
- + Sync Input



The HDG-20 portable video test generator offers an extensive list of advanced features at an affordable price. The HDG-20 provides still and moving test patterns in SD and HD formats at full broadcast quality. It also outputs audio tone, time code and closed caption characters. It even features a dual-link 2k resolution video output and an optional sync input (for genlock).

The HDG-20 fits in the palm of your hand and has four buttons to operate the menu displayed on its bright LCD screen. RS-422 firmware upgrade provides for hassle free updates.

Doremi Labs designed the HDG-20 to offer video professionals a low cost portable test generator to calibrate and test video equipment and displays at broadcast, post production, concert, home theater, and R&D facilities.

HDG Control Software

Remote control software for the PC that connects via a RS422 serial connection. It provides an easy to use graphical interface to select all HDG-20 settings. Current active settings are always on display above the three function tabs.



HDG-20

STILL PATTERNS

- ▶ 100% Color Bars
- ▶ 15% Grey and 25% Grey
- ▶ Black
- ▶ Black to White Gradient
- ▶ Borderline
- ▶ Check Field (equalizer / pll)
- ▶ Cross Hatch
- ▶ Full White, Red, Green and Blue
- ▶ Grey Levels — 16 bars: Grey/Red/Green/Blue
- ▶ Moiré Circle Effect / Zone Plate
- ▶ Random Noise SMPTE Bars Target
- ▶ Vertical Lines / Horizontal Lines
- ▶ Multiburst
- ▶ Random Generator for all still patterns

MOVING PATTERNS

- ▶ Can be combined with the still patterns listed above for hundreds of variations
- ▶ 1 or 2 moving squares with shape and color change effect
- ▶ Full Motion of still pattern
- ▶ Snow
- ▶ Scrolling Title
- ▶ Speed control of motion
- ▶ Inverse effect with still pattern

AUDIO TONE GENERATOR

- ▶ Embedded SDI Sine Wave (1kHz up to 16kHz)
- ▶ 4 Channels on 4 Groups
- ▶ Audio Level Settings (8 Values)
- ▶ Audio Synchronization Mode

CLOSED CAPTION

- ▶ CC as ancillary data in video stream
- ▶ CC to the CEA-708 standard (Option)

TIME CODE GENERATOR

- ▶ TC as ancillary data in video stream
- ▶ Drop or Non-Drop Frame
- ▶ On Screen Burn in Window

VANC GENERATOR

- ▶ Inserts a counter packet into VANC

VIDEO INPUT

- ▶ Sync Input (Option)

VIDEO OUTPUT

- ▶ Two BNC connectors provide either:
 - Two identical serial digital (SDI) outputs
 - Dual Link serial digital output (YPbPr/RGB)
- ▶ Pair with Doremi's HDVI-20 for DVI output
- ▶ Formats Supported:
 - NTSC & PAL
 - 720p - 60, 59.94, 50Hz
 - 1080i / 1080p - 30, 29.97, 25, 24, 23.98Hz 2048 x 1080p & sf - 24, 23.98Hz
- ▶ Standards: SMPTE 125M, 274M, 296M, 372M, 292M
- ▶ Bit Rate: 1.485 Gb/s, 1.4835 Gb/s, 270Mb/s
- ▶ Resolution: 10 bit

INTERFACE

- ▶ Two line LCD with menu controls
- ▶ Save settings to memory option

OTHER

- ▶ RS-422 for remote control and firmware upgrades

GENERAL

- ▶ 5–18 volts (screw-on connector)
- ▶ External Adapter: 100–240VAC 50–60Hz
- ▶ 5.4" x 3.7" x .8" (138mm x 93mm x 22mm)

The English version of this document is the only legally binding version. Translated versions are not legally binding and are for convenience only



HDG.BR.002968.DRM
Version 1.0

Technology Leadership
for Digital Cinema

Doremi Labs, Inc.
1020 Chestnut St. Burbank, CA
91506 U.S.A.

Tel : +1 (818) 562-1101
Fax : +1 (818) 562-1109
www.DoremiLabs.com