

DISCONTINUED



The DVK-200 Kit is a cost effective solution for producing high-quality live chromakey feeds to monitors, DVD recorders, and HDD recorders. You can create stunning virtual studio effects using one camera and the DVI output of a computer. The LD-1 light ring lets you lock into individual settings for both your foreground and background source inputs. This allows you to tweak settings on one source without affecting the other. You can play clips, create still backgrounds or embed live footage into PowerPoint® presentations or any other media that you choose. The DVK-200 has switchable DVI, S-Video and CV foreground and background inputs. The YUV input is reserved for foreground use only. The DVK-200 kit supports either PAL or NTSC video standards.

The DVK-200 kit includes: DVK-200, LD-1 Blue/Green LED ring, variable brightness power supply, camera adaptor rings (82mm, 72mm, and 58mm), 2x RF-1225FP retro reflective screens.

Features

- Key out backgrounds - select blue, green or luminance
- Key out level adjustment - reduce the shadow after keying
- Crop/adjust window - select areas of screen window to be keyed
- Built in shrink function - reduces white or black edges on a subject
- Built in TBC (Time Base Corrector)
- Built in color processor, brightness, contrast, color and tint adjustable (tint is only NTSC)
- Spill adjustment - removes unwanted color cast on the subject
- Subject Density - makes the subject become more or less defined

Connections:**Video**

- Foreground Inputs: DVI, YUV, S-Video, and CV (Composite)
- Background Inputs: DVI, S-Video, and CV (Composite)
- Outputs: 2x CV (Composite) and S-Video

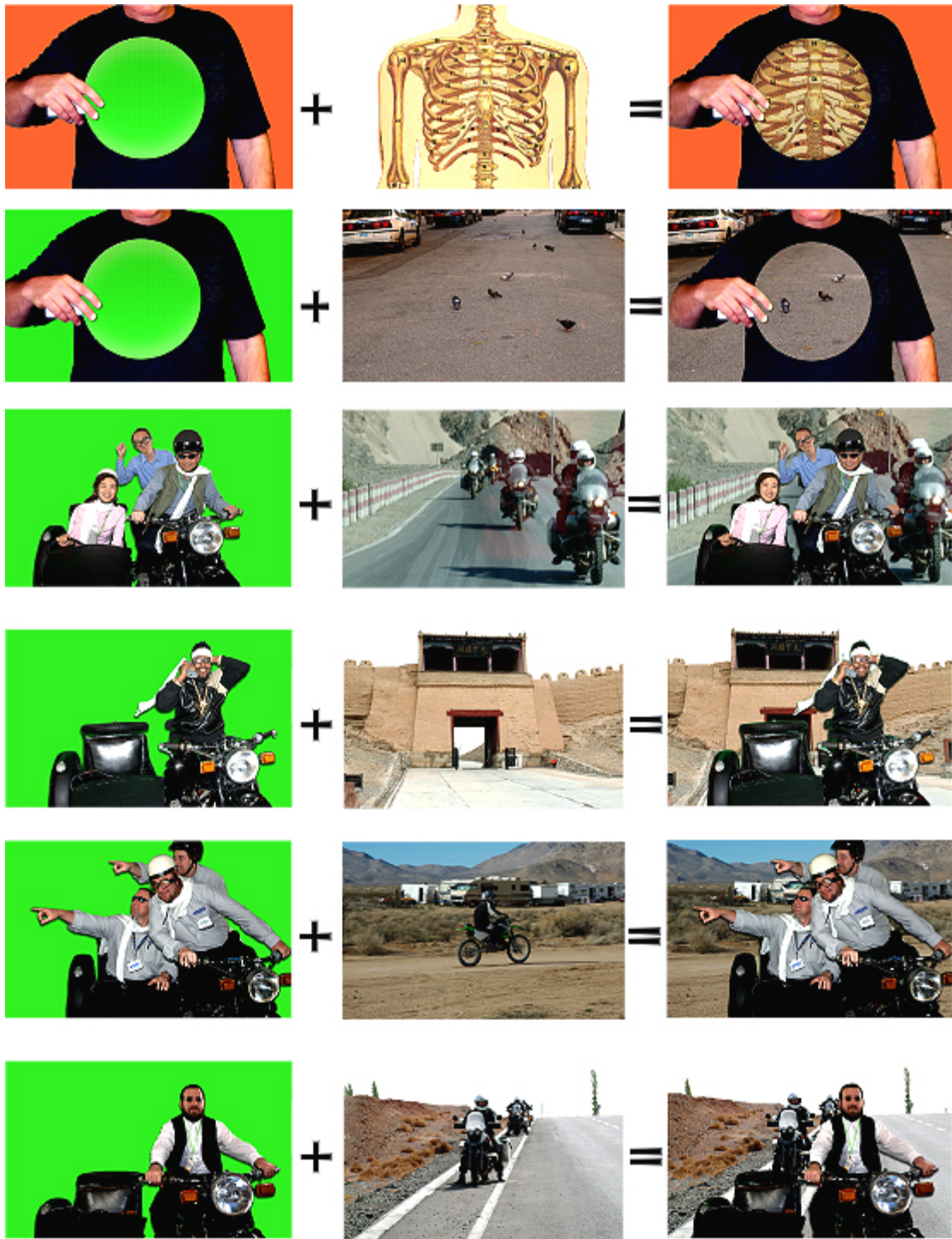
Note: Single DVI can be used as a foreground or background source

Control

- RS-232 remote control interface

Power

- 12V 1.5A DC 110/220 power supply included



Available to support either PAL or NTSC video standards, the DVK-200 has a single camera input for DVI, YUV, S-Video, and CV (Composite) connections.

F.A.Q.'s

Q: On the back of the DVK-200, I see dip switches. Do I need to adjust the dip switches?

A: The dip switches on the back of the DVK-200 usually do not need to be adjusted. Dip switches are used to configure the DVK to work in different regions, which are preset at the factory. For a complete explanation of the dip switches please refer to the DVK-100 Manual..

Q: I have connected my camera to the DVK-200 but I am unable to see the video.

A: The DVK-200 has an input selector switch for each input. Please make sure the selector is set to the correct input type.

Q: Will the DVK-200 accept 16:9 signals?

A: Yes, the DVK-200 accepts 16:9 signals.

Q: Will the DVK-200 accept a VGA signal if I use a VGA to DVI adapter?

A: Yes, the DVK-200 has a DVI-I port (which accepts analog or digital signals), so the incoming signal can be from a VGA source which has been adapted to DVI. Set the DVK-200's Dipswitch #10 to the "on" position to enable analog VGA signals.

Q: What resolutions are supported via the DVI input on the DVK-200?

A: The DVK-200 will accept the following resolutions: 1024x768 and 800x600.

Whats in the Box

Two 4 ft (1.2m) S-Video cables

One 4 ft (1.2m) M/M BNC cable

One 6 inch (15 cm) S-Video loop cable

12V 3A DC 110/220 power supply and cord included