

EHD730

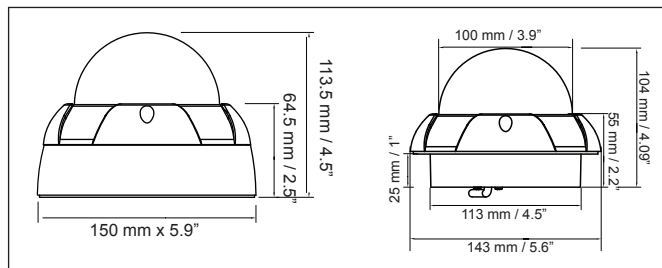
Outdoor True Day/Night IR 3-Axis Vandal Dome Camera



Features

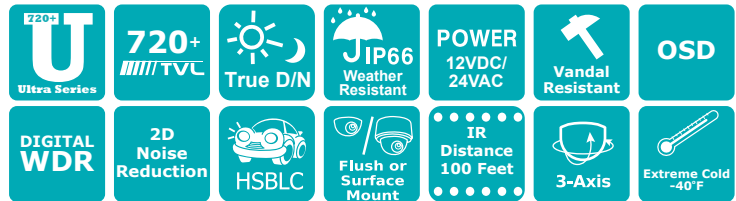
- Ultra resolution of over 720 horizontal TV lines for astounding image quality
- Exview HAD II sensor delivers amazing ultra high sensitivity of .05 lux – very low light sensitivity without DSS low light boost - Zero Ghosting guaranteed
- Megapixel-Varifocal 2.8~12mm lens with external zoom & focus controls captures desired field of view
- Adaptive Tone Curve Reproduction (ATR)/Digital Wide Dynamic Range expansion) to deliver properly exposed images despite unbalanced lighting in the scene
- Provides 2D-Noise Reduction to improve picture clarity while enabling DVRs to improve disk storage utilization
- Easy to use OSD setup menu
- Vandal Resistant construction able to withstand intentional damage
- Digital Wide Dynamic Range expansion to deliver properly exposed images despite bright light sources, deep shadows and/or unbalanced lighting in the same scene
- The flexible angle viewing with its 3 Axis rotation design allows wall or ceiling mounting
- IP66 weather resistant rating means that it will withstand the elements of outdoor conditions
- Up to 100 feet of IR distance

Dimensions: mm/in



Ordering Info

EHD730: Day/Night IR Dome, Beige, 720 TVL, 2.8-12mm



Specifications

Part Number	EHD730
Pickup Device	1/3" Sony Exview HAD II 960H High Sensitivity Interline CCD
Video Format	NTSC or PAL
Picture Elements	1020 x 508 (NTSC) 1020 x 508 (NTSC)
Effective Pixels (NTSC PAL)	976 x 494 (NTSC) 976 x 582 (PAL)
Scanning System	2:1 Interlace
Horizontal Resolution	720+ TVL
Sensitivity	0 lux with IR on .05 lux native from sensor
S/N Ratio	Over 50dB (AGC off)
Electronic Shutter	1/60s~1/100,000s
Video Output	BNC 1.0Vp-p 75Ω
Gamma Correction	0.45
Lens Type	2.8-12mm Megapixel DC Iris
Lens Options	Varifocal
BLC	OFF/BLC/HSBLC Selectable
Gain Control	Low light auto, bright light auto, manual selectable
White Balance	ATW/One Push/User2/Anti-Crawl/Manual/Push Lock
Sync Mode	Internal (plus Anti-Chroma Crawl White Balance option)
IR Distance	up to 100'
Day/Night	True Day & Night, With motorized IR Cut Filter; choose Color, B/W, Auto
OSD Menu	Multiple Functions
OSD Languages	English, Spanish, Portuguese, German, Russian, Japanese, Chinese, French
Digital Noise Reduction	On/OFF
ATR	On/Off (3 levels each adjustable for luminance and contrast)
Wide Dynamic Range	On/Off (3 levels each adjustable for luminance and contrast)
Mirror	Off/On
Motion Detection	Off/On for 4 selectable zones (On screen indication on alarm)
Privacy Mask	Off/On for 4 selectable zones
Environmental	IP66 Weather Resistant
Power Source	12VDC/24VAC
Power Consumption	2.16W max 2.9W max
Operating Temp	-40°F~122°F -40°C~50°C
Dimensions (in mm)	Surface: 6.14" (156mm) dia. x 5.1" (129.5mm) high Flush: 5.63" (143mm) dia. X 3.11" (79mm) visible & .98" (25mm) behind surface
Weight (lbs gm)	3 lbs 1360g
Vandal	Vandal
Certifications	CE/FCC

