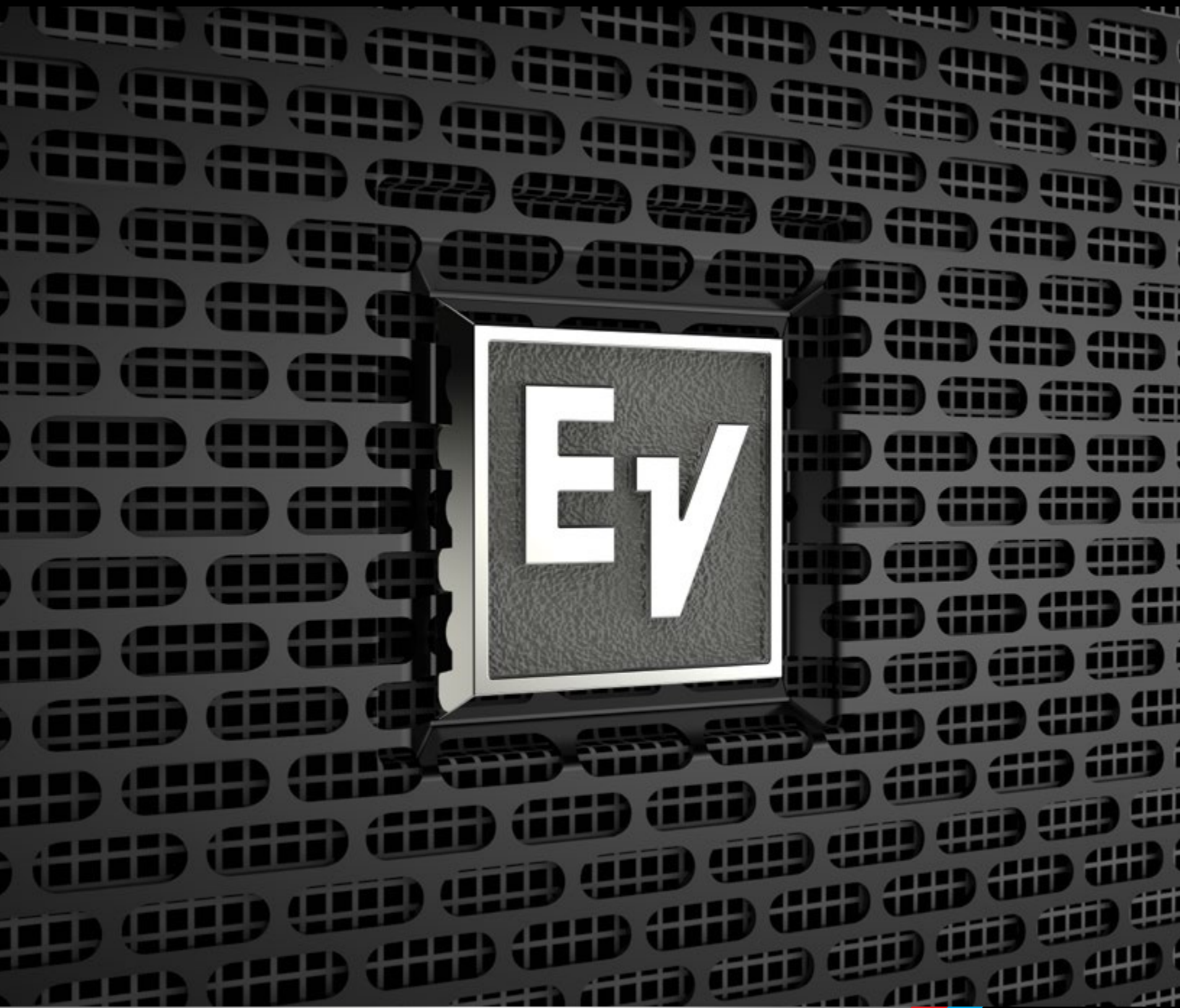




PORTABLE LOUDSPEAKERS





EV Engineered • Tested • Optimized

Everything EV has learned building systems for the world's largest tours and events is condensed into our family of portable loudspeaker systems, which provide best-in-class, professional-grade performance for every kind of small/medium-sized mobile application or fixed installation.

Award-winning industrial design, state-of-the-art components and technologies adapted from our larger systems, premium mounting hardware and accessories, and transducers engineered by EV in the USA for the ultimate in audio quality and reliability have made us the leading name in portable speakers – renowned for delivering an exceptional sonic experience in a compact package.



THE MOST POWERFUL FAMILY IN PORTABLE SOUND



ZLX

With ZLX, Electro-Voice set out with a singular goal: to deliver best-in-class performance across every detail.

ZLX represents a new standard for musicians, DJs, and all performers looking for more quality and reliability in a portable loudspeaker. Combining decades of proven pro-audio engineering know-how and user-friendly features, ZLX gives you an extraordinary amount of control over your sound — all backed by the brand the professionals trust.



ELX

ELX was born stage ready. Wherever performance matters, ELX is serious gear for serious sound.

ELX loudspeakers offer top-quality components in remarkably affordable configurations that put the EV-quality experience within reach for artists, engineers, and live-sound businesses. Designed for a wide range of portable sound applications.





EKX

EKX maximizes the power of your performance with best-in-class features including intuitive single-knob Quick**Smart**DSP control.

The EKX series is next in line, and makes it easy to optimize the power of your performance, whatever the application, thanks to a range of EV-exclusive, best-in-class features. Maximum sonic impact with minimal effort.



ETX

ETX combines intelligent technology with innovative design. Performance beyond the reach of the competition.

Positioned at the highest level of the most powerful family in portable sound, the ETX Powered Loudspeaker family leverages technologies from EV concert and touring systems, and builds upon industry-leading innovation and 85-year heritage of Electro-Voice audio engineering to offer the most advanced professional-grade products for an array of applications.

ZLX
POWERED



TAKE CONTROL.

CUSTOM-BUILT
1000 W CLASS D
AMPLIFIER



VISUAL CONTROL
AND MONITORING
WITH PRESETS

ZLX POWERED Loudspeakers

The two powered ZLX models stand apart with the most complete and innovative package of features in their class, giving you more control over your sound to ensure your audience connects with your creative moment, whatever the gig.

- LCD display and unique single-knob DSP control with presets – quickly optimize ZLX to suit your performance style and space
- Input level meters and independent amplifier control – ensure optimal gain structure in seconds
- EV-engineered components matched with a custom-built 1000 W Class D amplifier for best-in-class sound
- Lightweight, super-durable composite construction with unique hi/lo grip design for effortless pole mounting and portability
- Patented split-baffle design for superior driver time alignment and enhanced sonic impact and intelligibility

In the case of the ZLX's uncluttered control panel, less really does mean more. Though the multiple dials and switches on other powered loudspeakers may suggest more functionality, ZLX's powerful DSP engine is accessed by a clean single-knob design with LCD display, and actually offers the most precise control and configuration available at its price point. Use the presets to optimize ZLX according to your application (music, live, speech, club) and your location (pole mount, monitor, install) and hear the difference in seconds. Smart design, straightforward operation.



12
ZLX-12P

12" TWO-WAY POWERED LOUDSPEAKER

The compact, lightweight ZLX-12P was designed to give you power and performance beyond the scope of other small-format loudspeakers, making it a standout choice for smaller-venue sound reinforcement or stage-monitoring. Pound for pound, no other similarly sized composite box comes close.

1000 W (Class D); 126 dB max
SPL; 50 Hz - 20 kHz

12" woofer and 1.5" high-frequency
titanium compression driver

34.3 lbs (15.5 kg)



15
ZLX-15P

15" TWO-WAY POWERED LOUDSPEAKER

Extend your low-end with this portable powerhouse. Whether used on its own or with a sub, the ZLX-15P provides crisp, clean highs and tight, deep lows for larger spaces – all with enough amplifier headroom to make sure you're heard both loudly and clearly.

1000 W (Class D); 127 dB max
SPL; 42 Hz - 20 kHz

15" woofer and 1.5" high-frequency
titanium compression driver

38.0 lbs (17.3 kg)

ZLX
PASSIVE

TAKE CONTROL



ZLX **PASSIVE** Loudspeakers

When choosing a loudspeaker, it's always wise to ask "What's inside the box?" Then take a listen and hear the EV difference for yourself. Featuring custom drivers housed in a breakthrough new cabinet design, the two compact and versatile passive ZLX models make EV's legendary sound quality and rugged reliability more accessible than ever before.

- EV-engineered components for best-in-class sound
- Lightweight, super-durable composite construction with unique hi/lo grip design for effortless pole mounting and portability
- Patented split-baffle design for superior driver time alignment and enhanced sonic impact and intelligibility

UNIQUE HI/LO
GRIP HANDLES
AND LIGHTWEIGHT
CONSTRUCTION

STUNNING
ENCLOSURE
DESIGN



12
ZLX-12
12" TWO-WAY PASSIVE LOUDSPEAKER

Big sound doesn't need to take up a lot of space. Ideal for main loudspeaker or monitor wedge duties, the ZLX-12 offers the ultimate combination of performance and portability – and always looks great on stage.

12" woofer for low-end punch in a compact enclosure and 1.5" high-frequency titanium compression driver

55 Hz – 20 kHz frequency range

250 W continuous and 1000 W peak power handling

95 dB SPL sensitivity; 125 dB max SPL

32.8 lbs (14.9 kg)



15
ZLX-15
15" TWO-WAY PASSIVE LOUDSPEAKER

The ZLX-15 gives you the confidence of the industry's most trusted components – engineered to exacting standards to bring exceptional EV audio quality for larger applications, with or without a subwoofer.

15" woofer for extended low-frequency response and 1.5" high-frequency titanium compression driver

44 Hz – 20 kHz frequency range

250 W continuous and 1000 W peak power handling

96 dB SPL sensitivity; 126 dB max SPL

36.5 lbs (16.6 kg)

ELX
POWERED



SERIOUS SOUND.

ELX POWERED Loudspeakers

Clear, powerful, and musical, the ELX Series was created to command the stage. The ELX series includes three versatile powered wood cabinets — two loudspeakers and a matching subwoofer. Each self-contained powered system features Electro-Voice-engineered components optimized for use with the integrated high-efficiency 1000 W and 700 W Class D amplifier.

The ELX series includes three versatile powered wood cabinets — two loudspeakers and a matching subwoofer. Each self-contained powered system features Electro-Voice-engineered components optimized for use with the integrated high-efficiency 1000 W and 700 W Class D amplifier. ELX loudspeakers are housed in hardy stackable enclosures of solid wood, making them lighter than comparable-quality composite or plastic boxes and therefore easier to load, transport, and set up.





12
ELX-112P

12" TWO-WAY POWERED LOUDSPEAKER

A compact, powerful and versatile choice for sound reinforcement and stage monitoring applications—lightweight and durable, with a 1000 W amplifier.

12" woofer and 1.5" high-frequency titanium compression driver

50 Hz – 20 kHz frequency range;
132 dB max SPL

Lightweight 1000 W Class D amplifier – runs cool without fans

Easy to connect and control with versatile input and output options

Rugged wood cabinet pole mounts or stacks with ELX subwoofers

37.04 lb | 16.8 kg



15
ELX-115P

15" TWO-WAY POWERED LOUDSPEAKER

A powerful step up from the ELX-112P, the 15" woofer and 1000 W amplifier in the ELX-115P deliver extended lower frequencies and room-filling volume.

15" woofer and 1.5" high-frequency titanium compression driver

44 Hz – 20 kHz frequency range;
134 dB max SPL

Lightweight 1000 W Class D amplifier – runs cool without fans

Easy to connect and control with versatile input and output options

Rugged wood cabinet pole mounts or stacks with ELX subwoofers

49.6 lb | 22.5 kg



18^{SUB}
ELX-118P

18" POWERED SUBWOOFER

Optimized for performance with the ELX-112P and ELX-115P, the ELX-118P adds a full, deep, low-frequency, amplified punch that you can hear and feel.

18" woofer for powerful, engaging bass response

32 Hz – 130 Hz frequency range;
134 dB max SPL

700 W Class D amplifier – runs cool without fans

Rugged wood cabinet supports pole mounted or stacked configurations

69 lb | 31.3 kg

ELX
PASSIVE

SERIOUS SOUND



ELX **PASSIVE** Loudspeakers

The ELX series includes four versatile solid wood passive cabinets – three loudspeakers, including a formidable dual-15" configuration, and an acoustically matched 18" subwoofer that supports pole mounted or stacked configurations.



12
ELX-112

12" TWO-WAY PASSIVE LOUDSPEAKER

The versatile ELX-112 loudspeaker is a compact, powerful choice with real stage presence, for sound reinforcement and stage monitoring applications.

12" woofer and 1.5" high-frequency titanium compression driver

55 Hz – 20 kHz frequency range

94 dB SPL sensitivity;
132 dB max SPL

250 W continuous and 1000 W peak power handling

Rugged wood cabinet pole mounts or stacks with ELX subwoofers

35.27 lb | 16 kg



15
ELX-115

15" TWO-WAY PASSIVE LOUDSPEAKER

A powerful step up from the ELX-112, the ELX-115 features a 15" woofer that delivers extended low-frequency response for bigger sound in larger rooms.

15" woofer and 1.5" high-frequency titanium compression driver

50 Hz – 20 kHz frequency range

95 dB SPL sensitivity;
134 dB max SPL

400 W continuous and 1600 W peak power handling

Rugged wood cabinet s or stacks with ELX subwoofers

48.28 lb | 21.9 kg



15^{SUB}
ELX-215

DUAL 15" TWO-WAY PASSIVE LOUDSPEAKER

This dual-woofer configuration delivers real low end punch – ideal for applications that demand high volume output and an ultra-wide frequency response from a single cabinet.

Dual 15" woofers and 1.5" high-frequency titanium compression driver

38 Hz – 20 kHz frequency range

96 dB SPL sensitivity;
137 dB max SPL

600 W continuous and 2400 W peak power handling

Rugged wood cabinet creates serious stage presence

89.73 lb | 40.7 kg



18^{SUB}
ELX-118

18" PASSIVE SUBWOOFER

Optimized for performance with the ELX-112 and ELX-115, the ELX-118 adds a full, deep, low-frequency punch that you can hear and feel.

18" woofer provides extended low-frequency output

35 Hz – 200 Hz frequency range

96 dB SPL sensitivity;
134 dB max SPL

400 W continuous and 1600 W peak power handling

Rugged wood cabinet supports pole mounted or stacked configurations

67.46 lb | 30.6 kg

EKX
POWERED

SONICIMPACT



Electro-Voice **EKX SERIES** Portable Loudspeakers

The EKX series is the newest member of the Electro-Voice portable loudspeaker family, and combines legendary EV sound quality and reliability with the latest technology – all in a compact package suitable for a wide range of sound reinforcement scenarios, including musicians/DJs and live/club/installed sound applications. The EKX series features eight models (four powered and four passive), including 12" and 15" two-way models and 15" and 18" subwoofers.

EV-engineered components, Signal Synchronized Transducers™ (SST) waveguide design, and Class D amplifiers (up to 1500 W) coupled with Quick**Smart**DSP all work together to provide precise coverage and superior sound quality at high SPLs. EV's award-winning industrial design – with robust wood enclosures and durable EVCoat finish – ensures that EKX speakers look as great as they sound.

EV ENGINEERING
AND INNOVATION
WORKING TOGETHER
FOR MAXIMUM
SONIC IMPACT.



POWERED EKK Models

- Powered EKK models feature high-efficiency Class D power amplifiers (up to 1500 W) with integrated Quick**Smart**DSP, and deliver up to 134 dB peak SPL utilizing high-sensitivity transducers designed and engineered by EV (12" EVS-12M woofer/15" EVS-15M woofer, each coupled with a 1" DH-1M HF titanium compression driver; 15" EVS-15C subwoofer/18" EVS-18C subwoofer).
- The EKK amplifier incorporates intelligent thermal management (with a variable-speed fan controlled by multiple onboard sensors) which ensures superior performance and reliability in demanding environmental conditions.
- Powered models allow easy setup via four presets (Music, Live, Speech*, Club), sub/top system-match crossovers, three-band EQ*, five user-programmable presets (Store and Recall settings), visual monitoring of limiter status, input level control* and meters, and master volume control to ensure optimal gain structure.
- Adapted from our touring systems, when multiple subs are deployed EV-exclusive Cardioid Control Technology allows output to be steered towards the audience with up to 35 dB reduction on stage when multiple subs are deployed.
- EKK powered models are ideal for portable and installed applications, with lightweight and compact 15-mm wood enclosures with internal bracing, durable EVCoat finish, eight M10 threaded mounting points (full-range only), aluminum pole mounts, and all-metal handles.

*not available on subwoofers



15^{SUB}
EKK-15SP
15" POWERED SUBWOOFER

18^{SUB}
EKK-18SP
18" POWERED SUBWOOFER

Quick**Smart**DSP features best-in-class processing, EV's signature single-knob user interface, and intuitive menu navigation via LCD.

Cardioid Control Technology allows output to be steered towards the audience with up to 35 dB reduction on stage when multiple subs are deployed.

High-efficiency 1300 W Class D power amplifier delivers **up to 133 dB peak SPL on the EKK-15SP** and **up to 134 dB peak SPL on the EKK-18SP** utilizing high-sensitivity transducers designed and engineered by EV.

Intelligent thermal management with a variable-speed fan controlled by multiple onboard sensors, ensuring superior performance and reliability in demanding environmental conditions.

Two XLR outputs for easy system expansion to additional loudspeakers or subwoofers. Large slot ports for low distortion and excellent bass extension. Metal grille reinforcement bar (two on the 18SP). M20 threaded pole mount plate.



PASSIVE EKX Models

Passive EKX models deliver up to 134 dB peak SPL utilizing high-sensitivity transducers designed and engineered by EV (12" EVS-12M woofer/ 15" EVS-15M woofer, each coupled with a 1" DH-1M HF titanium compression driver; 15" EVS-15C subwoofer/18" EVS-18C subwoofer).

EKX passive models are ideal for portable and installed applications, with lightweight and compact 15-mm wood enclosures with internal bracing, durable EVCoat finish, eight M10 threaded mounting points (full-range only), aluminum pole mounts, and all-metal handles.

12

EKX-12

12" TWO-WAY PASSIVE LOUDSPEAKER SYSTEM

1400 W (peak), 131 dB peak SPL utilizing high-sensitivity transducers designed and engineered by EV.

EV-patented Signal Synchronized Transducers™ (SST) waveguide design provides precise and consistent coverage.

Lightweight, compact 15-mm wood enclosure with internal bracing, and durable EVCoat finish.

Eight M10 threaded mounting points, aluminum pole mounts, and all-metal handles.

90° x 60° pattern for best coverage on mid-size stages. 40° monitor angle with rubber feet.



15
E**KX-15**

15" TWO-WAY PASSIVE LOUDSPEAKER SYSTEM

1600 W (peak), 132 dB peak SPL utilizing high-sensitivity transducers designed and engineered by EV.

EV-patented Signal Synchronized Transducers™ (SST) waveguide design provides precise and consistent coverage.

Lightweight, compact 15-mm wood enclosure with internal bracing, and durable EVCoat finish.

Eight M10 threaded mounting points, aluminum pole mounts, and all-metal handles.

90° x 60° pattern for best coverage on mid-size stages. 40° monitor angle with rubber feet.



15^{SUB}
E**KX-15S**

15" PASSIVE SUBWOOFER

1600 W (peak), **133 dB peak SPL on the EKX-15S** and **134 dB SPL on the EKX-18S** utilizing high-sensitivity transducers designed and engineered by EV.

Lightweight, compact 15-mm wood enclosure with internal bracing, and durable EVCoat finish.

Large slot ports for low distortion and excellent bass extension.

Metal grille reinforcement bar (two on the EKX-18S).

M20 threaded pole mount plate.



18^{SUB}
E**KX-18S**

18" PASSIVE SUBWOOFER

ETX
POWERED

BRAIN POWER

Performance beyond
the reach of the
competition.

BRAINPOWER

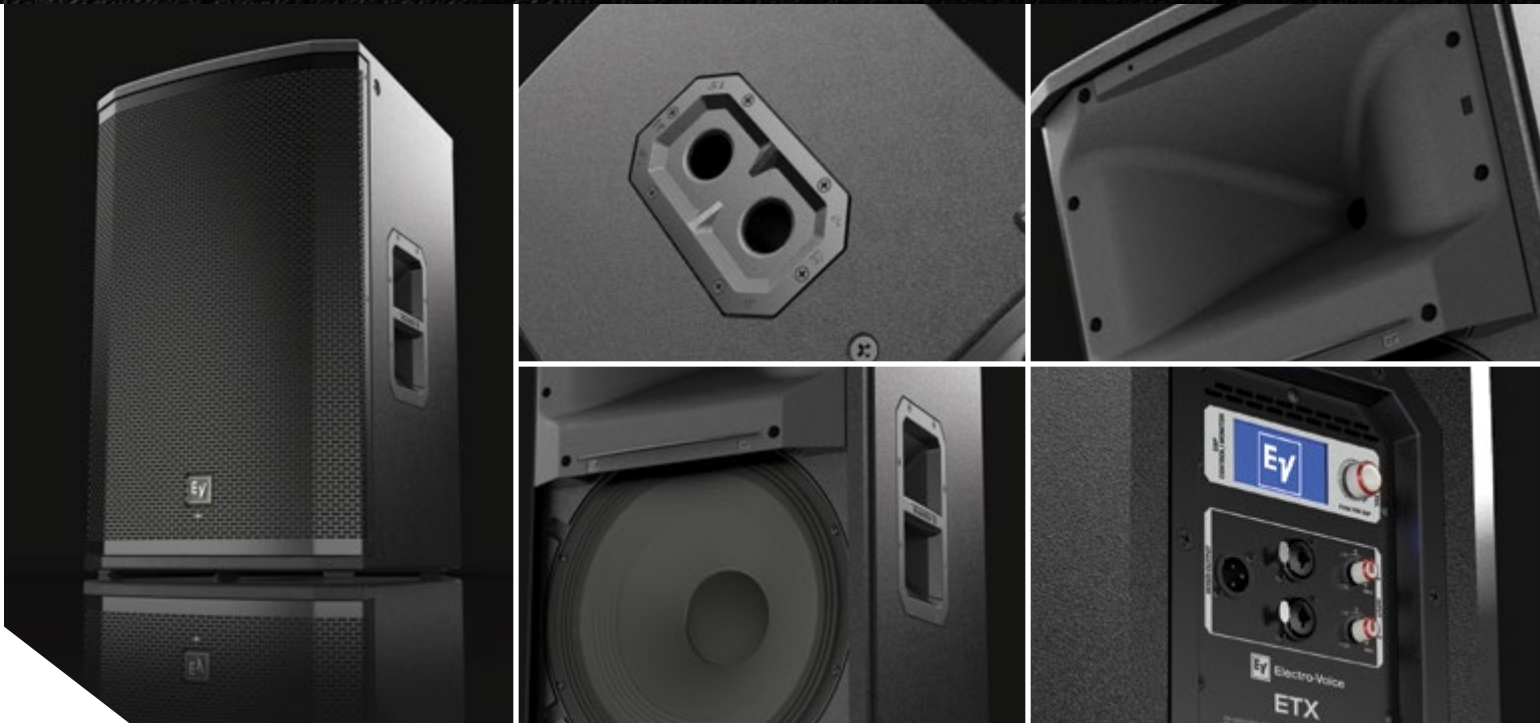
Intelligent technology,
innovative design.

ETX POWERED Loudspeakers

Inside each low-profile, tour-grade wood enclosure are a host of unique new features that set ETX Powered Loudspeakers apart, combining intelligent technology and innovative industrial design for spectacular results across all applications.

Three two-way models (10", 12" and 15", all with a precision HF titanium compression driver), a three-way model (15" with a 6.5" MF driver and a precision HF titanium compression driver) and two subs (15" and 18" drivers) are available.

EV-engineered high-efficiency transducers and high-powered Class D amplifiers, Signal Synchronized Transducers™ (SST) waveguide design, and smart FIR Drive DSP all work together to provide peerless EV sound quality and precise coverage at the highest SPLs.



Performance Beyond the Reach of the Competition

- EV's FIR Drive utilizes the latest Finite Impulse Response (FIR) filter technology to optimize transducer linearity. Advanced limiter algorithms for independent peak and thermal transducer protection.
- Complete full-function DSP control via a single-knob interface. LCD screen for easy system set-up and monitoring: location/application EQ presets (e.g. tripod, mounted, suspended, live, music, speech), limiter status, input level controls*/meters, and master volume control to ensure optimal gain structure. Parametric EQ allows for more precise configuration. Subs feature a preset for true cardioid performance.
- EV-patented Signal Synchronized Transducers™ (SST) waveguide design provides precise and consistent coverage across all system configurations. Waveguides are custom-designed and optimized per model.
- State-of-the-art components deliver the legendary EV sound quality and reliability the pros trust: 1800 W (subs) and 2000 W (full-range) Class D power amplifiers with integrated DSP produce high SPLs utilizing high-sensitivity, low-distortion transducers (including DVX and SMX series woofers and precision DH3-B HF titanium compression drivers).
- Lightweight, ergonomic, durable, and compact 18-mm, 13-ply birch plywood enclosures finished with EVCoat. Eight mounting points for permanent installations (full-range models). Custom die-cast aluminum pole cups, handles and hardware.

*not available on subwoofers



10
ETX-10P
10" TWO-WAY POWERED LOUDSPEAKER

10" LF SMX woofer

1.25" HF titanium compression driver

2000 W Class D power amplifier
with integrated FIR Drive DSP

134 dB peak SPL



12
ETX-12P
12" TWO-WAY POWERED LOUDSPEAKER

12" LF SMX woofer

1.25" HF titanium compression driver

2000 W Class D power amplifier
with integrated FIR Drive DSP

135 dB peak SPL



15
ETX-15P
15" TWO-WAY POWERED LOUDSPEAKER

15" LF SMX woofer

1.25" HF titanium compression driver

2000 W Class D power amplifier
with integrated FIR Drive DSP

135 dB peak SPL



35
ETX-35P

15" THREE-WAY POWERED LOUDSPEAKER

15" LF SMX woofer

6.5" MF driver

1.25" HF titanium
compression driver

2000 W Class D power amplifier
with integrated FIR Drive DSP

136 dB peak SPL



15^{SUB}
ETX-15SP

15" POWERED SUBWOOFER

15" DVX woofer for
maximum punch

1800 W Class D power amplifier
with integrated FIR Drive DSP

134 dB peak SPL

Special DSP preset for true
cardioid performance across the
full operating bandwidth

Combo pole cup (insert and threaded)
for use with full-range models

Removable casters



18^{SUB}
ETX-18SP

18" POWERED SUBWOOFER

18" DVX woofer for extended
low-frequency response

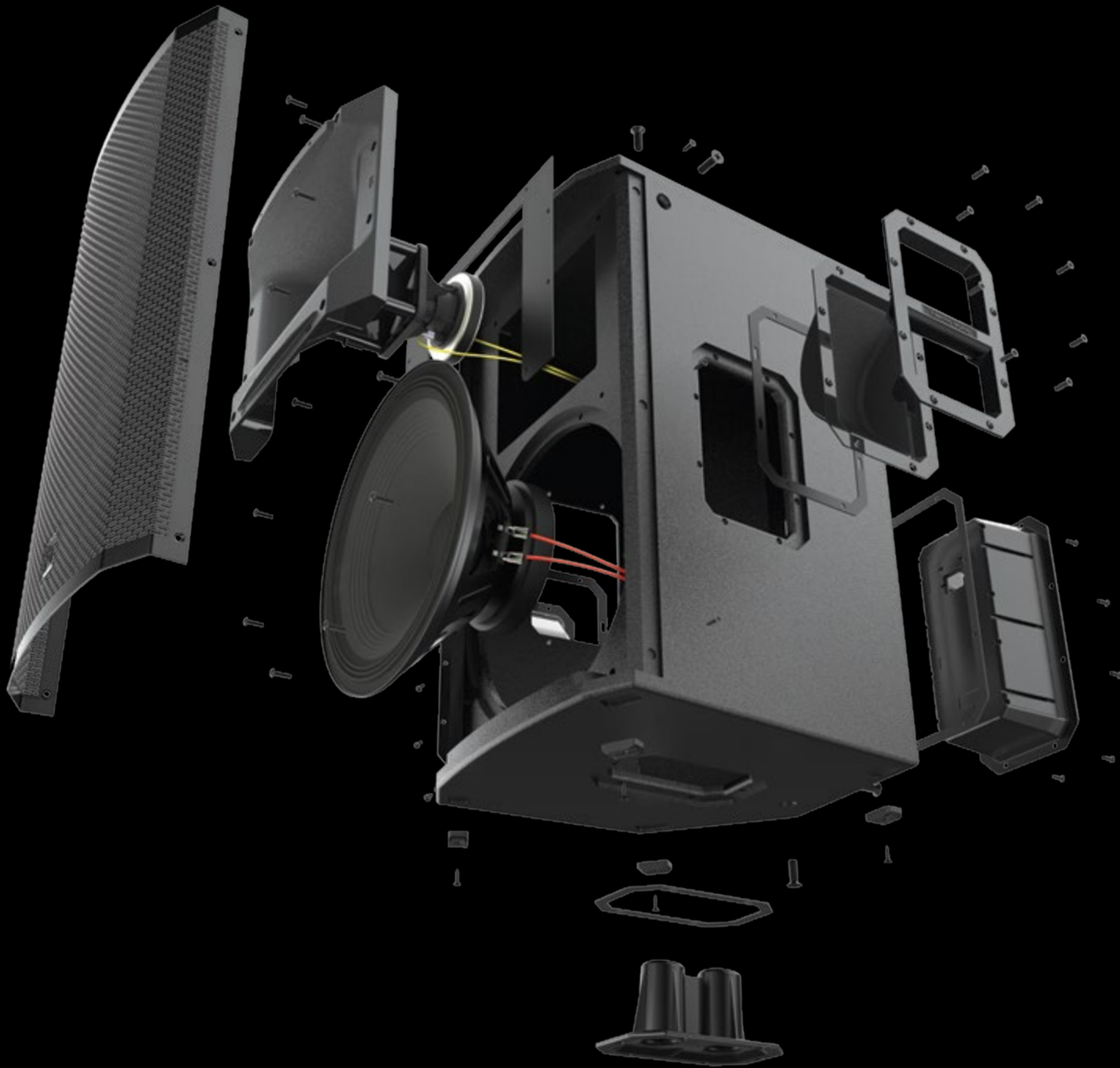
1800 W Class D power amplifier
with integrated FIR Drive DSP

135 dB peak SPL

Special DSP preset for true
cardioid performance across the
full operating bandwidth

Combo pole cup (insert and threaded)
for use with full-range models

Removable casters



Headquarters Americas:
Bosch Security Systems, Inc.
12000 Portland Ave South | Burnsville, MN 55337 | USA
Ph: 1 800 289 0096 | Fax: 1 800 955 6831
buv.orders@us.bosch.com