

**GAFFGUN**<sup>TM</sup>  
PATENT PENDING

**QUICK START GUIDE**





## TABLE OF CONTENTS

In Your Box.....	4
The GaffGun	
Choosing a CableGuide.....	6
Installing a CableGuide.....	7
CoreLok Tapes.....	8
Standard Tape Adapters.....	9
Loading CoreLok Tape.....	10
Adjusting Tape Tension.....	11
Loading Tape Using a Standard Tape Adapter..	12
Tape Routing.....	13
Lower Handle.....	14
Extension Handle.....	15
Cable Memory.....	16
Using the GaffGun.....	17
Q&A.....	19
Warranty Information.....	21
Notes.....	22

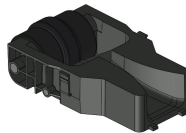


## IN YOUR BOX

GaffGun with lower handle



CableGuide – small  
(Do not remove foam)



Extension handle

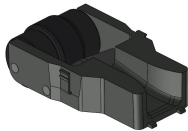




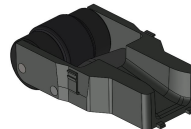
## IN YOUR BOX

Your box may also include:  
(Additional accessories sold separately and may be combined for shipping.)

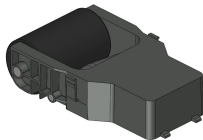
CableGuide – medium  
(Do not remove foam)



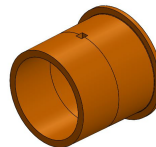
CableGuide – large  
(Do not remove foam)



FloorGuide



Standard Tape Adapters (set of 3)



## CHOOSING A CABLEGUIDE

For the best results, select the guide most appropriate for your task.  
For applications utilizing cables, select the CableGuide with a funnel width that will best accommodate the diameter and quantity of cables being used.

For applications that do not involve taping over cables, the FloorGuide is designed to apply tape directly to the floor.

CableGuide – small (10/16" wide)

CableGuide – medium (1-1/8" wide)

CableGuide – large (1-3/8" wide)

FloorGuide

**Remember: Every cable has a different diameter and no two cables are alike. The shielding and gauge of your cables will help determine which guide to choose.**



## **INSTALLING A CABLEGUIDE**

To remove a CableGuide, depress the finger clips on the sides of the guide and pull outward.

To install a new CableGuide, insert the two alignment tabs into the matching holes on the front of the GaffGun's CableGuide slot. Then press the guide into place until you hear the 'click' of the finger clips locking.



## CORELOK TAPES

CoreLok was specifically designed to optimize the performance of the GaffGun.

CoreLok locks your tape onto the GaffGun, which ensures the tape is always centered on the device and allows use of the GaffGun's tensioning system.

We are excited for you to experience all the benefits of CoreLok.

For a list of retailers that carry CoreLok tapes, please visit [www.GaffGun.com](http://www.GaffGun.com).

The GaffGun tape cores are **recyclable** in any standard plastic recycling bin.



## STANDARD TAPE ADAPTERS

The GaffGun was designed to work best using CoreLok technology. However, if you have stock of non-CoreLok tape or if a type of tape is not yet available with CoreLok, we have Standard Tape Adapters available.

These adapters are sold as a set of three for 1", 2" and 3" tape. They allow standard 3" core tape to be used on the GaffGun by bypassing the benefits of CoreLok and the GaffGun's tensioning system.

Tapes with CoreLok have been made specifically for use with the GaffGun and the pull-off tension has been optimized for use on the device. All other tapes have varying pull-off tensions. Some tapes have such high pull-off tensions that they will not allow the GaffGun to push freely. If you have trouble pushing the device due to this high tension, try another roll or brand of tape on the GaffGun. Tapes that are past their shelf life or have been in climates outside of best storage practices may be more susceptible to a pull-off tension problem.

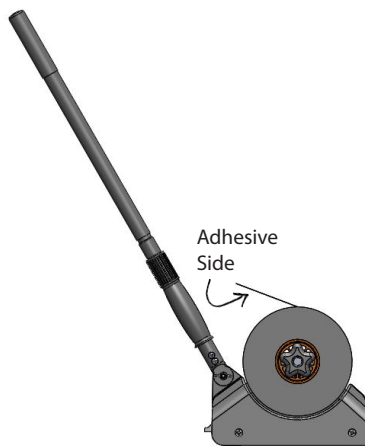
All standard 3" core tapes vary in actual core diameter. To ensure the adapters will fit all brands of tape, the adapters err on the small side of these core diameters. If you are using tape that is loose on the core, wind tape around the adapter making the adapter wider to match your specific tape's core. The tighter the fit on the adapter, the better the device will perform.



## LOADING CORELOK TAPE

Align the notch found on the inside of the CoreLok tape's core with the depressable tab on the GaffGun's orange hub. Slide the tape over the hub until the core 'clicks' into place.

For proper tape direction, see the diagram below.



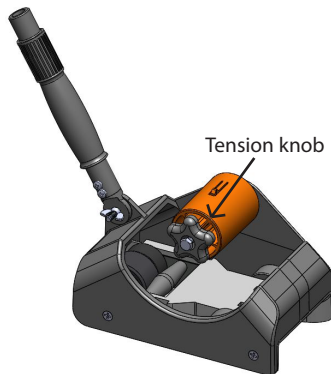


## ADJUSTING TAPE TENSION

The GaffGun was designed to give you complete control of the tape's pulling tension.

The adjustable knob on the GaffGun's orange hub allows you to vary the level of tension needed for your specific task or type of tape. The level of tension needed will vary based on the tape and flooring surface, and it will need to be adjusted based on these factors.

To increase tension, turn the tension knob clockwise.  
To decrease tension, turn the knob counterclockwise.

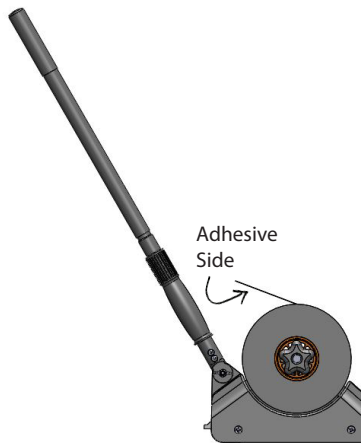


## LOADING TAPE USING A STANDARD TAPE ADAPTER

Align the notch found on the inside of the tape adapter with the depressable tab on the GaffGun's orange hub. Slide the adapter over this tab until it 'clicks' on the device. The ridge side of the adapter should slide first. (This ridge helps keep the tape centered on the GaffGun.)

Slide your tape onto the tape adapter until it comes into contact with the ridge.

For proper tape direction, see the diagram below.

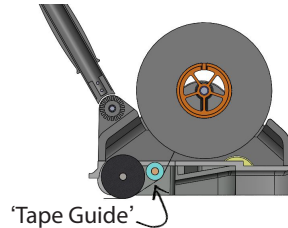






## TAPE ROUTING

Feed the tape down through the GaffGun, staying to the proper side of the tape guide. (See illustration to the right.)



When not using the GaffGun, stick the fed tape against the bottom of the GaffGun to eliminate the need to refeed the tape.





## LOWER HANDLE

For your convenience, the GaffGun ships with its lower handle attached and already set at the most comfortable angle for most users.

If you need to make a small adjustment to this angle, simply loosen the wing nut at the base of the handle, adjust to the desired angle, and tighten the wing nut.

When using the GaffGun on an elevated surface, under tables, or in tight spaces, it may be helpful to use only its lower handle.



## EXTENSION HANDLE

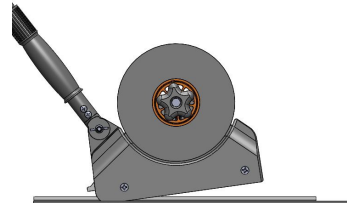
Every GaffGun comes standard with a **telescoping** extension handle. Adjust the handle to waist height for best performance.

To extend the handle, place your left hand on the handle grip and your right hand on the handle threads. Hold the handle tight with your left hand, twist your right hand counterclockwise and pull the handle out to the desired length. To tighten the handle in a position, hold the handle tight with your left hand and twist your right hand clockwise.

When threading the extension handle into the lower handle, ensure the connection is fully tightened. By doing so, you will have better control of the GaffGun and will be able to push the GaffGun in a straighter line.

### **TIP**

If your handle is extended too far, there may be a tendency for the front of the device to lift. If this happens, your cables will not stay within the CableGuide, and the proper results will not be achieved. For a short video explaining this in more detail, please visit [www.GaffGun.com](http://www.GaffGun.com).





## CABLE MEMORY

As you push the GaffGun forward, it will gather and straighten your cables through the funnel on the front of the device. If your cables do not have Cable Memory you are ready to begin.

If your cables do have Cable Memory, tack down both ends before using the GaffGun. Failing to do so may result in less than desirable results. Visit [www.GaffGun.com](http://www.GaffGun.com) for videos highlighting Cable Memory.

Cable Memory is a term for when a cable tends to 'remember' a previous shape it was in, such as being bent or twisted. The quality of cable, temperature, and storage techniques may all be a cause of creating Cable Memory.



## USING THE GAFFGUN:

### To use the GaffGun:

1. Choose and install a CableGuide. (pg 6-7)
2. Attach tape to the GaffGun. (pg 10-12)
3. Feed the tape through the CableGuide. (pg 13)
4. If taping cables, place the GaffGun over the cables.
5. Ensure the cables are fully within the CableGuide funnel.
6. Tack the initial few inches of tape behind the GaffGun using the tape that has been fed through the CableGuide.





## USING THE GAFFGUN:

7. If using the extension handle, attach the handle and adjust its height. (pg 15)
8. Push the GaffGun, applying forward pressure.
9. When finished taping, use the back lip on the GaffGun to tear the tape.



It may help to bring the tape to the plastic lip rather than trying to rotate the GaffGun down to the floor for cutting.

10. For safety, ensure the tape run is properly adhered to the ground.

*For brief tutorials on using the GaffGun, please visit [www.GaffGun.com](http://www.GaffGun.com)*



## QUESTIONS AND ANSWERS

### **Where can I purchase more Corelok tape for the GaffGun?**

*You can find a list of distributors offering CoreLok tape at [www.GaffGun.com](http://www.GaffGun.com).*

### **Do I have to use CoreLok tape for the GaffGun?**

*No, although we think you will find tapes specifically designed to work on the GaffGun will perform best. This is due to the patent-pending CoreLok technology. If you do not use tape with CoreLok, you must use one of the Standard Tape Adapters available for purchase at [www.GaffGun.com](http://www.GaffGun.com).*

### **What is CoreLok Technology?**

*CoreLok is a patent-pending mechanism that locks tape to the GaffGun hub. This ensures your tape is always centered on the GaffGun and allows you to use the tape tensioning system.*

### **Are GaffGun tape cores recyclable?**

*Yes. The core can be put in any standard plastic recycling bin.*

### **What is the maximum quantity and diameter of cables that can be used with the GaffGun?**

*The number of cables that can be used will vary based on the gauge and shielding of the cables. A quick rule is: If your tape can't fit over the cables and safely adhere to the ground, you are using too many cables or too narrow a width of tape. The axle height of the GaffGun is 3/4", so cables larger than this diameter will not allow the GaffGun to work.*

*GaffTech will be releasing a larger GaffGun to handle these larger cable quantities and diameters. Follow us on Facebook or visit [www.GaffGun.com](http://www.GaffGun.com) for future product announcements.*



## QUESTIONS AND ANSWERS

### **On what surfaces can the GaffGun be used?**

*The GaffGun works on most surfaces. To ensure cables stay within the funnel of the GaffGun, a low ground clearance must be maintained. Because of this, the GaffGun may scrape on uneven surfaces like exposed aggregate.*

*Examine the flooring surface carefully before using the GaffGun. GaffTech is not responsible for damage to flooring or the GaffGun due to the improper use of the GaffGun or tapes used on the GaffGun.*

### **What widths of tape fit on the GaffGun?**

*The GaffGun was designed to work with 1", 2", and 3" tape widths.*

### **Do I have to go back after my tape run and press the tape to the floor?**

*The GaffGun was designed to apply even pressure to the floor, saving you from having to go back and press your tape down. However, the quality of tape, floor surface, floor cleanliness, and other factors can all play a part in the performance of the GaffGun. It is up to the GaffGun user to ensure the safety of each tape run.*

### **What is the FloorGuide?**

*The FloorGuide is for applications that do not involve taping over cables. The FloorGuide is designed to apply tape directly to flooring.*





## WARRANTY

### Warranty, Returns, and Refunds Policy

If you have a problem with your purchase, we're here to help.

Your purchase is warranted against manufacturer defects and can be returned within 90 days of the original receipt of the product, if the return is due to manufacturer defect or damage. If you receive a damaged product, please notify us immediately to initiate an exchange. Refunds will be issued in the same method of payment as the original payment.

Before you return a product, please contact us:

- By phone number: 1-844-423-3486
- By email: [support@gaffgun.com](mailto:support@gaffgun.com)
- By visiting our website [www.GaffGun.com](http://www.GaffGun.com)

Please make sure:

- The product was purchased or received in the last 90 days.
- The product is in its original packaging and includes all adapters and accessories.

#### Promotional and bundled items

When a promotional item included in the original transaction is not returned, the value of the promotional item will be deducted from the refund amount.

*If you have any questions about our Warranty, Returns, and Refunds Policy, please contact us.*



## NOTES



## NOTES

