

# DSPOT

DIGITAL SIGNAL PROCESSOR

**DS-CP22**

The new DSPOT Series offers a full line of Digital Signal Processors. These processors allow the user to manage and clarify the sound produced in their speaker system. Each model can be accessed by the front panel or the convenient, easy to use, included software.

User defined presets provide a useful tool to live sound, where a preset can be used for frequently visited venues or specific performers in a fixed install. Presets can be also be saved to internal or removable drives, in addition to the device itself, allowing for a preset to be designed in advance, and then downloaded on site.

The DSPOT software provides many filtering and other detailed settings easily controlled on your PC, to refine your sound. All DSPOTs are perfect for fixed and live applications.

The DS-CP22 is a digital compressor with built in Noise Gate, Gain control, Automatic Gain Control (AGC), EQ, Sub Harmonic Synthesizer, Compressor, and Limiter. The DS-CP22 provides both Limiter and Compressor activity for both output channels.

Two great included features are the AGC and Sub Harmonic Synthesizer. The AGC allows you to set a target output level and the circuit will raise or lower the level to meet that target. The Sub Harmonic Synthesizer allows you to create either a deep very low body or a lighter and more booming extra body to the original sound.

The DS-CP22 provides 7 bands of parametric equalization with High/Low Pass filtering. Each EQ filter can be easily adjusted to a specific frequency, and the Q selected with simple Bell curve adjustments from 0.05-3.00. The DS-CP22 can store up to 32 presets.

Whether traveling on the road with the band or in a fixed installation, the DS-CP22 has the features needed to aid in sound improvement.

- Stereo or 2 Channel RMS Compressor and Peak Limiter
- AGC, 7 Band Parametric EQ, Peak Limiter, Sub-harmonic Synthesizer
- Hard or Soft Knee
- Balanced XLR and 1/4" Inputs and Outputs
- Easily Remote Controlled by a USB Port, or MIDI



MAKERS OF THE ORIGINAL  
HOT SPOT PERSONAL MONITOR



### Specifications

**Analog Inputs:** Balanced 2 XLR & TRS  
**Analog Outputs:** Balanced 2 XLR & TRS  
**Input Max Levels:** +15dBu  
**Output Max Level:** +10dBu

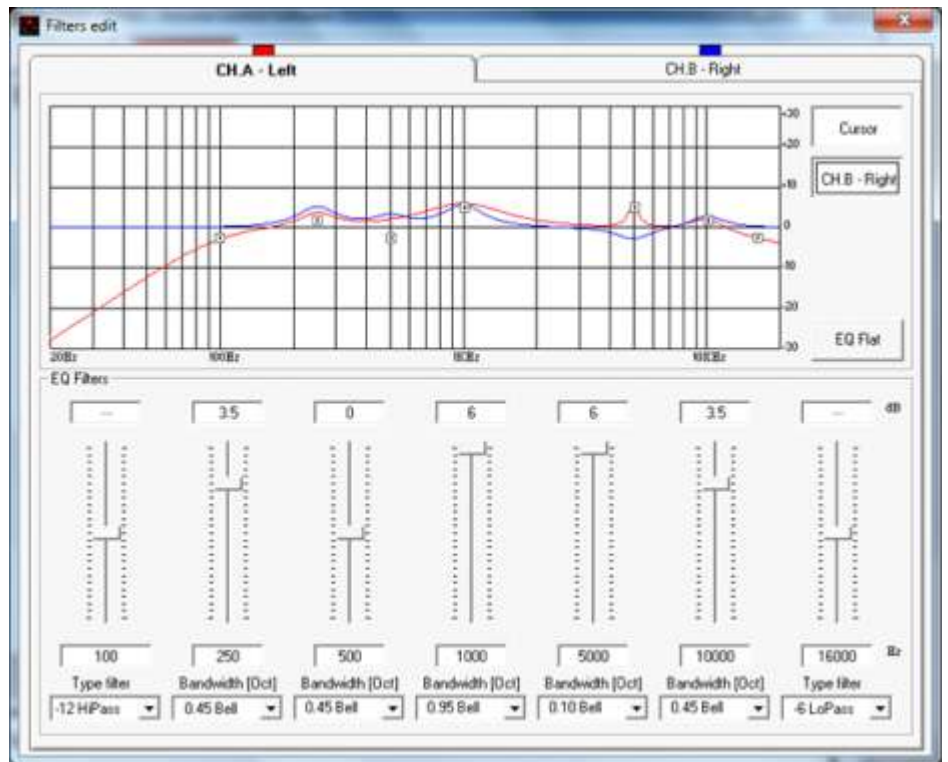
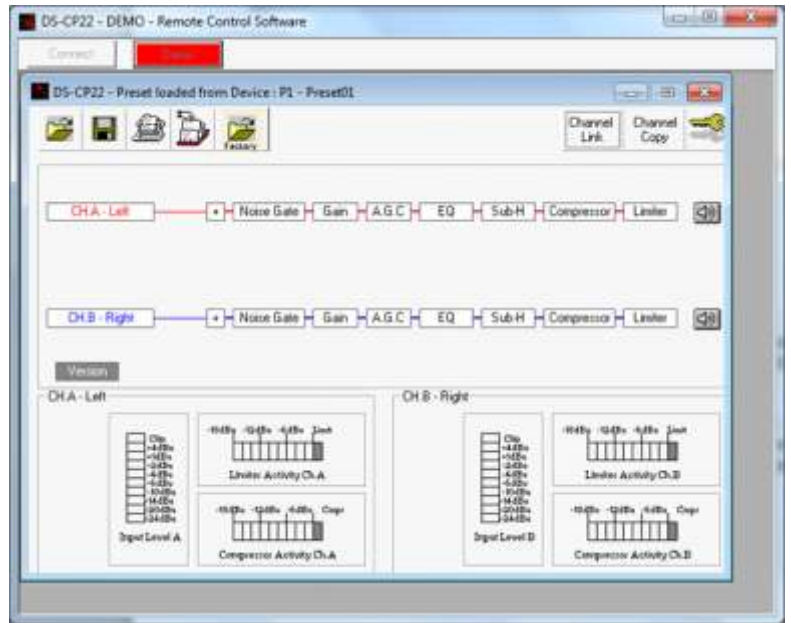
**THD+N:** <0.01% @ -6dBFS (Bypass)  
**S/N Ratio:** >100dBu (Processes in Bypass)  
**Frequency Response:** 20Hz – 20kHz +/-0.5dB

**A/D and D/A Resolution:** 24bit  
**Process Resolution:** 24x48 bit  
**Processes:** RMS Stereo Compressor

**Power Supply:** 110V/220V (Switchable)  
**2x20 characters LCD display** for the Parameters Editing  
**Fully remote controllable** by USB or MIDI interfaces

**Dimensions:** 9.25" x 19" x 1.75"  
 (234.95 x 482.6 x 44.45 mm)

**Weight:** 6.3lb (2.86kgs)



MAKERS OF THE ORIGINAL  
 HOT SPOT PERSONAL MONITOR

Specifications subject to change without notice.

601 E. Pawnee Wichita, KS 67211 316. 263.2852 FAX 316.263.0642 [www.galaxyaudio.com](http://www.galaxyaudio.com)  
 Distributed outside the United States by **E and E Exports, Inc.** 2815 Junipero Ave. Suite 101 Signal Hill, CA 92614  
 562.988.3447 FAX 562.989.3037  
 Distributed in Canada by **Audio Distributors International (ADI)** 1275 Newton, unit 6 Boucherville, QC J4B 5H2 Canada  
 450.449.8177 FAX 450.449.8180