



Model UD2A-EDID

DVI Extender with EDID Management, Serial
& GUI Control



UMA1148 Rev D

Table of Contents

1.0 General	2
2.0 Features	2
3.0 Installation.....	3
3.1 Required Cables.....	3
3.2 Inputs & Outputs	3
3.3 Connecting the UD2A-EDID-S.....	3
4.0 Operation.....	4
4.1 Front Panel Buttons	4
4.2 RS-232.....	5
4.2.1 Configure HyperTerminal.....	6
4.2.2 Control Codes	7
4.2.2.1 Select EDID Routing:.....	7
4.2.2.2 Learn EDID information:.....	7
4.2.2.3 Enable output boost:	7
4.2.2.4 Disable output boost:	8
4.2.2.5 Read EDID Information:	8
4.2.2.6 Blank output:	9
4.2.2.7 Un-blank output:.....	9
4.2.2.8 Get status report:.....	9
4.2.2.9 Display main menu:.....	10
4.2.2.10 Quit RS232 menu	10
4.3 GUI Software.....	10
4.3.1 Installing the software.....	10
4.3.2 Running the GUI software.....	11
5.0 Connection Chart	14
6.0 Troubleshooting.....	15
7.0 Specifications.....	15

1.0 General

Thank you for purchasing Hall Research's UD2A-EDID. This is a versatile, high performance DVI extender with EDID management.

This unit has the capability to read the EDID (**E**xtended **D**isplay **I**dentification) information from the device connected to either the DVI output connector or the receiver connected to the UTP output. This information can be stored in the UD2A-EDID-S memory in the "Emulate Learned" setting, which allows the unit to act like an actual monitor connected to the INPUT DVI connector.

The UD2A-EDID-S has local DVI and remote UTP video and audio outputs. Its video outputs can be blanked out or boosted when needed. This unit can drive video, audio, and RS-232 up to 300 feet depending on the video resolution being displayed.

This unit can be controlled by either manually using the buttons on the front panel or remotely through a serial port with RS232 commands or GUI software.

The unit also has internal memory to store the last operating selection when power is off. The unit allows four different EDID settings to be routed to the video input device.

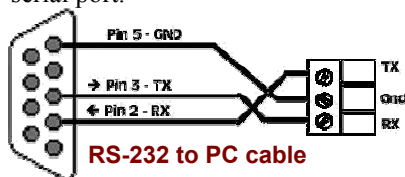
2.0 Features

- ✓ Read and store EDID information
- ✓ Allows EDID information downloaded from PC using GUI software
- ✓ EDID information learned from an output device can be used to emulate that actual device
- ✓ Multiple control methods including front panel, serial commands, or GUI software
- ✓ Video outputs can be blanked and un-blanked
- ✓ Stores the last selection in internal memory
- ✓ Can drive video, audio, and bi-directional RS232 over long cables
- ✓ Ships with serial control terminal adapter
- ✓ Compact, Rugged, Reliable, and Economical
- ✓ Made in USA

3.0 Installation

3.1 Required Cables

The video cables are DVI male to male. The audio cables are 3.5mm mini-stereo. When connecting to a PC's serial port for remote control of the DVI extender, an RS-232 to PC cable is required (Customer provided). A detachable 3-terminal mating connector is provided with the unit. The function of each pin is silkscreened above the 3-terminal input connector on the rear of the unit. Below is a diagram for connecting this port to a PC's DB9 serial port.



3.2 Inputs & Outputs

The UD2A-EDID-S has a DVI video input, a mini-stereo audio input, a RS232 terminal block, Local DVI output, Local audio output, and two UTP ports for video, audio and RS232 extension. Power plug is a standard IEC connector, (IEC 60320 C14)

The UD2A-EDID-R has two UTP input ports, a DVI output, audio output, and RS232 output.

3.3 Connecting the UD2A-EDID-S

Plug in the desired video and audio sources to the INPUT DVI and INPUT AUD connectors on the back of the UD2A-EDID-S.

Connect local video and audio devices; such as a monitor to the OUTPUT DVI and AUD connectors if desired. For remote video and audio; two CAT5 cables are used to connect UD2A-EDID-S (sender) to a UD2A-EDID-R (receiver) through UTP Extension port LINK A and LINK B connectors.

NOTE

Do not cross the A & B Link cables when connecting to the receiver unit.

Failure to observe this precaution could result in damage to the unit

Connect the RS-232 to PC cable if remote serial control is desired.

Connect the included power cord to the UD2A-EDID-S and apply power.

Model UD-2A-EDID

Select the desired EDID routing path using the front panel buttons, through RS-232 serial commands, or GUI software.



UD2A-EDID Rear Panel

The UD2A-EDID-R does not require a separate power supply; the power is supplied by the sender unit via the UTP cabling. **Be sure to connect A and B link cables correctly!** The Green PWR LED will indicate when the cables are correctly configured. Once the cabling is correctly connected, attach a monitor to the receiver DVI VIDEO OUTPUT connector. Connect the remote audio device to the STEREO AUDIO 3.5 mm jack, and a RS232 device to the 3 pin RS-232 connector; if desired.



4.0 Operation

The UD2A-EDID-S allows multiple control methods, such as front-panel buttons, RS232 serial commands, or GUI software.

4.1 Front Panel Buttons

The EDID ROUTING button is used to select what EDID information will be sent to the video source when requested. The choices are:

EDID Routing	EDID Information from
DVI-LOCAL	Device connected to the UD2A-EDID-S OUTPUT DVI Connector
UTP-REMOTE	Device connected to the UD2A-EDID-R OUTPUT DVI Connector
EMULATE DEFAULT	FACTORY EDID Information stored in UD2A-EDID-S Unit
EMULATE LEARNED	EDID Information stored by USER from Display Device either connected locally or remotely and unit put in LEARN mode

The LEARN button is used to program EDID information from either the sender's local OUTPUT DVI connector or the receiver's Remote

OUTPUT DVI Connector into the “EMULATE LEARNED” memory and save it for future use.

Use the EDID ROUTING button and select which device you desire to LEARN; either the DVI-LOCAL or UTP-REMOTE.

Press the LEARN button for 3 seconds; the EMULATE LEARNED LED will begin to flash to indicate that LEARN mode is in progress.

When the unit has successfully completed LEARNING the EDID of the selected device; the UD2A-EDID-S unit will sound 2 short beep tones. A long tone is sounded to indicate an error occurred.

Programming the EMULATE DEFAULT position can only be done through serial commands or the GUI software.

The Output Boost buttons are used to enable or disable the DVI output signal boost.



UD2A-EDID Front Panel

4.2 RS-232

The UD2A-EDID-S can be controlled via a serial device. From the serial port, you have full control over the operation of the front-panel buttons plus many more capabilities. Terminal emulator or ASCII software is required. An example is Microsoft Windows® HyperTerminal (generally found in the START->Programs->Accessories->Communication folder)

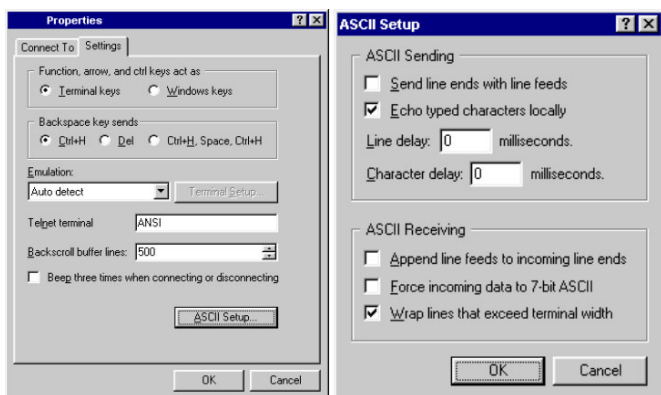
Note on RS-232 port availability on your PC

Most PCs and notebooks do not have a serial port. So to program the Switch you may need a USB to RS-232 Serial converter. These are available from Hall Research (Model USB-RS232-1).



4.2.1 Configure HyperTerminal

- Connect direct to COM1, COM2, or any available COM port
- 4800 Baud, 8 bits, No Parity, 1 Stop bit, No flow control
- Settings per following figures:



To enter into the serial command mode after connecting this unit to the PC; the following text must be sent along with a carriage return (ENTER).

Hall_Res ←

When successful, the main menu will display.

MENU - Version x.x

```

-----
1 = DVI Local      | R = Read EDID Info
2 = UTP Remote     | B = Blank
3 = Emulate Default | U = Un-blank
4 = Emulate Learned | S = Status Report
L = Learn          | M = Menu
E = Enable boost   | Q = Quit
D = Disable boost  |
-----
  
```


4.2.2 Control Codes

(1-byte commands from external control device)

4.2.2.1 Select EDID Routing:

To select EDID information to be routed to the video input device

Com m a n d	R e s p o n s e
ASCII 1 (or Hex 31)	DVI-Local selected
ASCII 2 (or Hex 32)	UTP-Remote selected
ASCII 3 (or Hex 33)	Emulate Default selected
ASCII 4 (or Hex 34)	Emulate Learned selected

4.2.2.2 Learn EDID information:

LEARN is used to store EDID information from either DVI-Local or UTP-Remote connectors. This information is later sent to the device connected to the INPUT DVI device when requested.

Com m a n d	R e s p o n s e
ASCII l or L (Hex 6C or 4C)	Learn

4.2.2.3 Enable output boost:

Output boost can be enabled for the output signal equalization over a long cabling when desired.

Com m a n d	R e s p o n s e
ASCII e or E (Hex 65 or 45)	Enable boost (1=DVI – 2=UTP)
ASCII 1 (or Hex 31)	DVI boost enabled
ASCII 2 (or Hex 32)	UTP boost enabled

4.2.2.4 Disable output boost:

Output boost can also be disabled for the output signal equalization over a long cabling when desired.

Com m a n d Response

ASCII d or D (Hex 64 or 44).....Disable boost (1=DVI – 2=UTP)

ASCII 1 (or Hex 31) DVI boost disabled

ASCII 2 (or Hex 32)UTP boost disabled

4.2.2.5 Read EDID Information:

Read EDID information from the currently selected EDID routing selection

Com m a n d Response

ASCII r or R (Hex 72 or 52).....

Reading EDID info from DVI-Local (or UTP-Remote) Device

Or

Reading EDID info from Emulate Default (or Emulate Learned) memory
Output is in a tabular format similar to below:

EDID BYTES:																
0x	00	01	02	03	04	05	06	07	08	09	0A	0B	0C	0D	0E	0F
00	00	FF	FF	FF	FF	FF	FF	00	4D	D9	70	2D	01	01	01	01
10	21	0E	01	03	80	22	1B	78	EA	C5	C6	A3	57	4A	9C	23
20	12	4F	54	A1	08	00	81	80	81	40	01	01	01	01	01	01
30	01	01	01	01	01	01	30	2A	00	98	51	00	2A	40	30	70
40	13	00	52	0E	11	00	00	1E	00	00	00	FD	00	39	3F	1C
50	41	0B	00	0A	20	20	20	20	20	20	00	00	00	FC	00	53
60	44	4D	2D	53	37	34	0A	20	20	20	20	20	00	00	00	FF
70	00	31	34	30	31	38	31	34	0A	20	20	20	20	20	00	1C

4.2.2.6 Blank output:

To blank the video output.

Com m a n d	Response
ASCII b or B (Hex 62 or 42)	Blank output (1=DVI – 2=UTP)
ASCII 1 (or Hex 31)	DVI blanked
ASCII 2 (or Hex 32)	UTP blanked

4.2.2.7 Un-blank output:

To un-blank the video output

Com m a n d	Response
ASCII u or U (Hex 75 or 55)	Un-blank output (1=DVI – 2=UTP)
ASCII 1 (or Hex 31)	DVI un-blanked
ASCII 2 (or Hex 32)	UTP un-blanked

4.2.2.8 Get status report:

Display the unit's status report including the current EDID Routing, output boost setting and the video output blank/un-blank status.

Com m a n d	
ASCII s or S (Hex 73 or 53)	

Response

Status Report

EDID Routing = DVI-Local	(or UTP-Remote)
DVI Boost = Disabled	(or Enabled)
UTP Boost = Enabled	(or Disabled)
DVI Blank = off	(or On)
UTP Blank = off	(or On)

4.2.2.9 Display main menu:

To display the RS232 serial command menu

Com m a n d Response
ASCII m or M (Hex 6D or 4D)

MENU - Version x.x

1 = DVI Local	R = Read EDID Info
2 = UTP Remote	B = Blank
3 = Emulate Default	U = Un-blank
4 = Emulate Learned	S = Status Report
L = Learn	M = Menu
E = Enable boost	Q = Quit
D = Disable boost	

4.2.2.10 Quit RS232 menu

To quit the RS232 serial command menu

Com m a n d Response
ASCII q or Q (Hex 71 or 51)..... Quit menu

4.3 GUI Software

Included in the UD2A-EDID package is an installation CD for the Windows® operating system that can be used to control the unit remotely via a PC COM port.

4.3.1 Installing the software

To install the software, load the CD into your PC and double-click the setup.exe file on the CD if setup does not automatically run. The installation wizard will guide you through the rest of the installation.

4.3.2 Running the GUI software

The Main window will display when the GUI is run. The communication parameters might need to be configured when running this UD2A-EDID software for the first time. Please refer to the COM Configuration window information setup below.



Figure 2 - Main

To open the COM Configuration window, select COM setting from the Configuration menu. The GUI software will detect all COM ports available on your PC. Select the COM port the UD2A-EDID-S is connected to in the PORT drop down menu. When done, press CLOSE button to save your port settings. The default settings for communicating with the UD2A-EDID-S will be COM1, 4800 Baud, 8 bits, No Parity, 1 Stop bit, No flow control. The only parameter that can be changed is the COM Port selection. The other parameters are configured as specified.

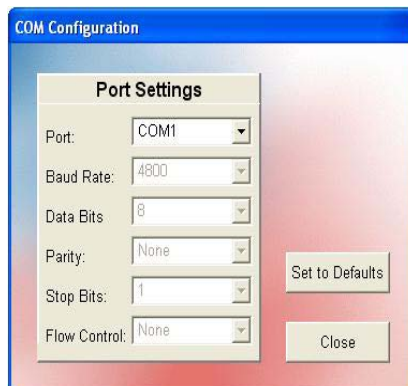


Figure 3 - COM Configuration

Model UD-2A-EDID

Once the communication is established between the UD2A-EDID software and the UD2A-EDID-S, the Main window should display the current state of the UD2A-EDID-S. Any change made either from the front panel or from the GUI will be updated accordingly. Any selection can be made by clicking on the buttons in the picture just like you were pressing them on the front panel. Selections can also be made by selecting the appropriate options under the Tools menu.

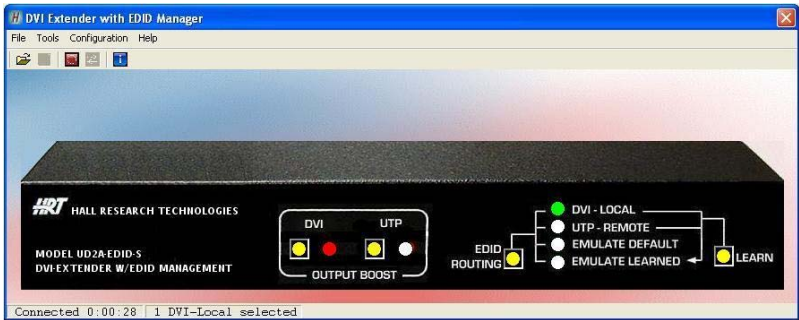


Figure 4 – Main

The Toolbar menu as shown in Figure 5 will have buttons enabled or disabled according to the current state of the UD2A-EDID-S.

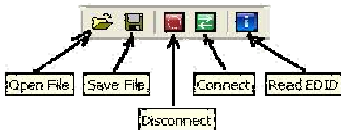


Figure 5 – Toolbar Menu

EDID information read from the device connected to the senders INPUT DVI connector, receivers OUTPUT DVI connector, from previously stored information in memory such as EMULATE DEFAULT or EMULATE LEARNED, or from an opened data file will be shown in a window similar to Figure 6 below.

If no device is connected to either senders INPUT DVI connector or the receivers OUTPUT DVI connector, or no information is stored in memory, all FF hex characters will be shown.

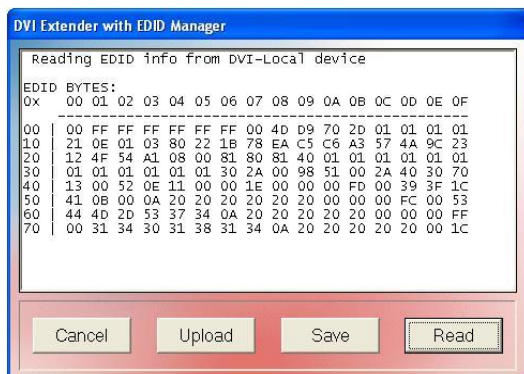


Figure 6 – EDID Info

The UD2A-EDID software allows the user to either save the displayed EDID info as a data file or to upload it to the UD2A-EDID-S as either EMULATE DEFAULT or EMULATE LEARNED. The process is shown in the following figures.



Figure 7 – Upload Options



Figure 8 – Uploading Message

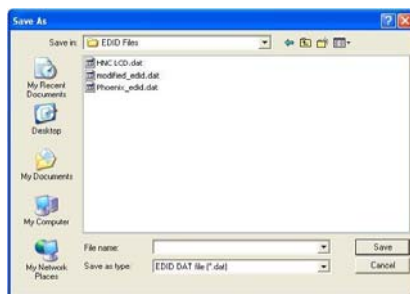


Figure 9 – Save As dialog

The EDID info data file can be viewed or edited using an EDID editor. There is a freeware included in the UD2A-EDID installation CD.

5.0 Connection Chart

The UD2A-EDID-S will support the following resolutions and maximum cable lengths.

		Cable Type	
		Cat5E	Cat6
Resolution	PC		
	640x480	200 ft	300 ft
	800x600	200 ft	300 ft
	1024x768	200 ft	300 ft
	1280x1024	150 ft	200 ft
	1366x768	150 ft	200 ft
	1600x1200	100 ft	150 ft
	1920x1080	100 ft	150 FT
	HDTV		
	480p / 576p	200 ft	300 ft
	720p	200 ft	300 ft
	1080i	200 ft	300 ft
	1080p	100 ft	150 ft

6.0 Troubleshooting

Make sure that all of the connections to the units are solid, and check the state of the LED's on the front of the unit. Do not open or try to repair the unit yourself. There is no customer repairable item in the unit and you will void your warranty.

If you are having trouble getting a picture on the remote unit, temporarily connect the remote LCD to the sender unit and LEARN your LCD's EDID information. After reconnecting the LCD out at the receiver, then select EMULATE LEARNED on the sender unit.

Contact HR Support at 714-641-6607 or via email or web. If you need to ship your switch for repair, make sure to get a Return Material Authorization (RMA) number first.

7.0 Specifications

Video Inputs DVI-D

Audio Inputs PC audio outputs

Video Level 0 to 0.7V p-p

Temperature Operating: 32 to 122°F (0 to 50°C);
Storage: -40 to +185°F (-40 to +85°C)

Enclosure Steel

MTBF 90,000 hours (calculated estimate)

Power 100-240V 50/60Hz 0.3A.

Size Sender: 1.7" High x 11.25" Wide x 4.1" Deep
Receiver: 1.25" High x 2.75" Wide x 3" Deep
(Receiver has 2 L-shaped mounting ears that protrude 0.40" beyond the main box on the front and back.)

Weight 2.12 pounds



Product Designed and Made in the USA



© Copyright 2010. Hall Research, Inc.
All rights reserved.

1163 Warner Ave., Tustin, CA 92780
Ph: (714)641-6607, Fax: (714)641-6698