

WOW-320

3U Wallmount Rack for Patch Panels or Hubs/Routers Rackmount



■ INTRODUCTION

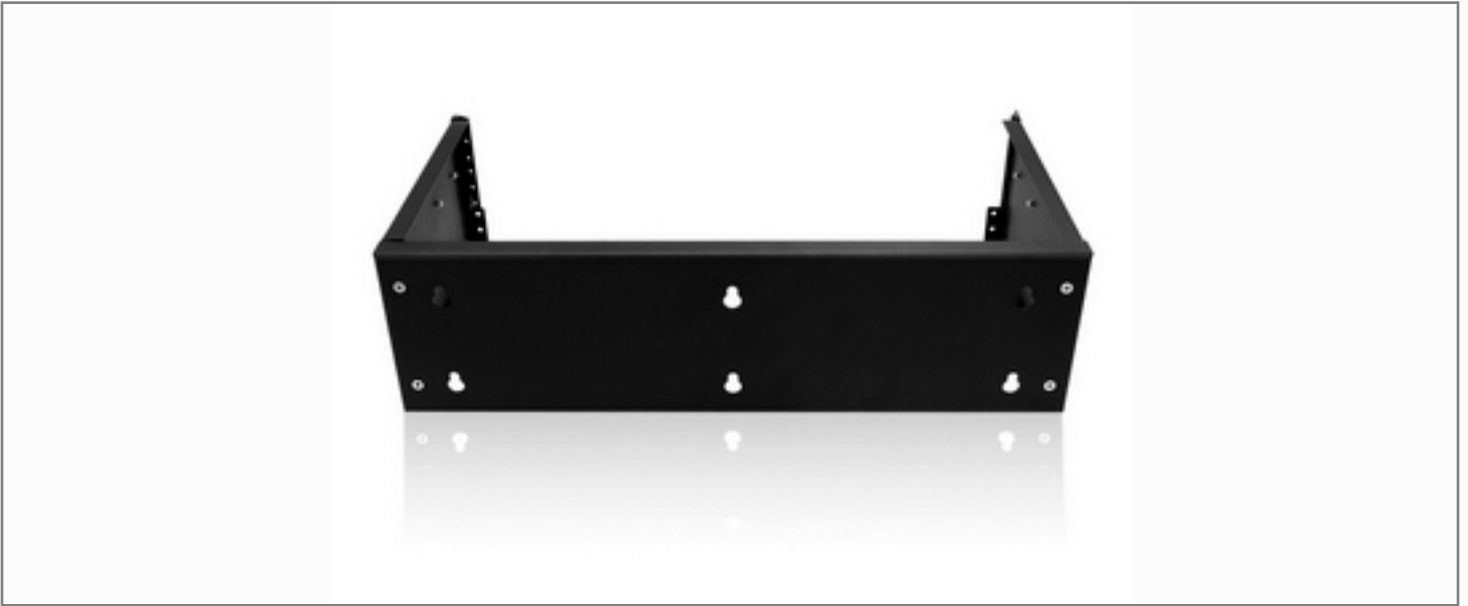
WOW-320 wall-mounted rack provides simplicity with mobility and easy installation. Sturdy steel frame construction enforces stability and durability. Open frame rack has higher thermal manageability by room or central air conditioning. WOW series is a flexible and cost-effective solution for rack-mountable devices.

■ FEATURE

- Ideal for Rack-mountable Devices
- Max Air Flow and Temperature Control by Central AC or by Room
- Easy Installation and Quick Assemble and Disassemble
- Wallmount or Desktop Standalone, Convenient for Storage
- Cost-Effective Solution
- Standard EIA Wall Mount Brackets
- Swing-out hinge design allows easy device installation and servicing

■ OPTIONAL ACCESSORIES

Model #	Description



SPECIFICATION

Model Number	WOW-320
RoHS Compliance	Yes
Form Factor	3
Color	
Loading Capacity	11 lbs
Supported Chassis Depth	16" and under
Internal Dimensions [WxHxD]	x 9.9" to 13.5"
Dimensions [WxHxD]	19.5 x 5.25 x 9.9
Weight	9.00
Cooling	
Material	Rack: SPCC 2.0mm
Notes	1. HTS code: 8473.30.5100 (ECCN is not applicable).

