

Open Frame Construction with Powder Coating to Prevent Rust, Scratch, and Oxidation

Max Air Flow

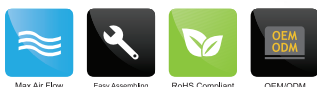
Wallmount or Desktop Standalone

Modular Design, Easily Assembled and Dissassembled

Model No.	Form Factor	Dimension (inches)			Assembly Required?	Loading Capacity (lbs)	Door	Removable Side panels	Security	Casters	Page No.
		W	H	D							
WU-40B	4U	20.10	7.75	16.10	Yes	165	No	No	-	No	58
WU-60B	6U	20.10	11.20	16.10	Yes	165	No	No	-	No	59
WU-90B	9U	20.10	16.50	16.10	Yes	165	No	No	-	No	59
WU-120B	12U	20.10	21.70	16.10	Yes	165	No	No	-	No	59

WU-40B

4U Wallmount Open Frame Rack



Features

- Open Frame Construction Enables Quick Access to Rackmount Devices
- Max Air Flow and Temperature Control by Central AC or by Room
- Modular Design, Easily Assemble and Disassemble
- Wallmount or Desktop Standalone, Convenient for Storage
- Cost-Effective Solution

Shipping Information

Shipper Design	Customizable Carton
Shipper Dimension (inch)	20x16x6
Weight	15 lbs
Pallet Load	100

Introduction

The StarMount, open frame wall-mount rack, provides simplicity with mobility. Quick and easy assembly steps to setup open rack. The WU sturdy steel frame construction enforces stability and durability. Open frame rack has higher thermal manageability by room or central air conditioning. WU series is a flexible and cost-effective solution for rack-mount devices.

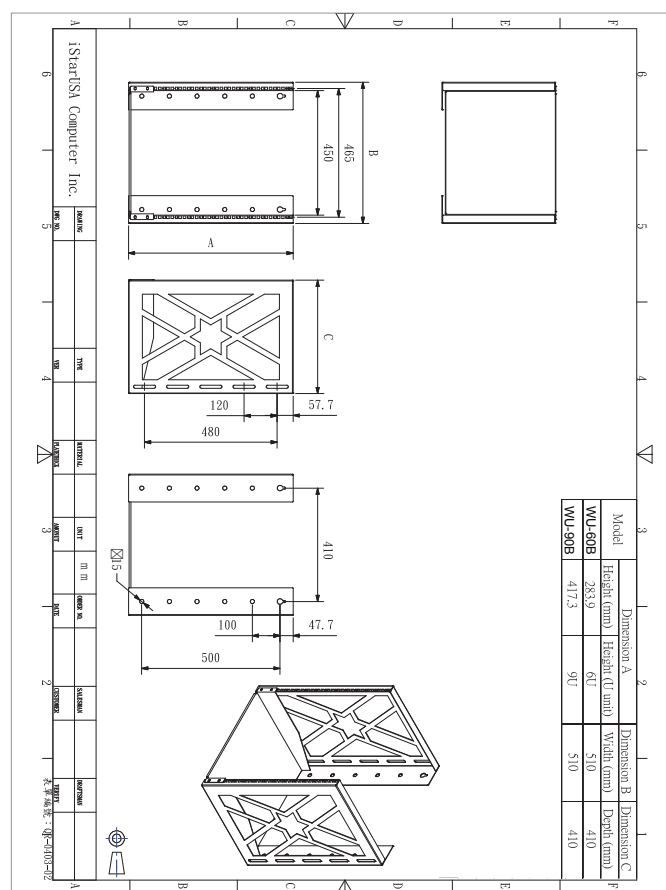
Specifications

Color	Black
Material	Rack: SPCC 2.0mm Base: SPCC 1.6mm
Industry Standard	ANSI/EIA RS-310-C/D, UL, CE MIL-STD-167 shock-proof test
Surface Treatment	Powder Coating (hot hardening powder-coated to prevent rust, scratch, and oxidation)

Accessories

WA-PD014	14 Outlet Lightning Surge Protection Power Distribution Unit
WA-PS010	10 Outlet Power Strip
WA-PS06A	6 Outlet Power Strip
WA-SW10-M5	Cabinet/ Rack Screw Kit

Drawing



WU-60B

6U Wallmount Open Frame Rack



Specifications

Color	Black
Material	Rack: SPCC 2.0mm Base: SPCC 1.6mm
Industry Standard	ANSI/EIA RS-310-C/D, UL, CE MIL-STD-167 shock-proof test
Surface Treatment	Powder Coating (hot hardening powder-coated to prevent rust, scratch, and oxidation)

CLAYTEK Enclosed Cabinet

WU-90B

9U Wallmount Open Frame Rack



Specifications

Color	Black
Material	Rack: SPCC 2.0mm Base: SPCC 1.6mm
Industry Standard	ANSI/EIA RS-310-C/D, UL, CE MIL-STD-167 shock-proof test
Surface Treatment	Powder Coating (hot hardening powder-coated to prevent rust, scratch, and oxidation)

WU-120B

12U Wallmount Open Frame Rack



Specifications

Color	Black
Material	Rack: SPCC 2.0mm Base: SPCC 1.6mm
Industry Standard	ANSI/EIA RS-310-C/D, UL, CE MIL-STD-167 shock-proof test
Surface Treatment	Powder Coating (hot hardening powder-coated to prevent rust, scratch, and oxidation)