

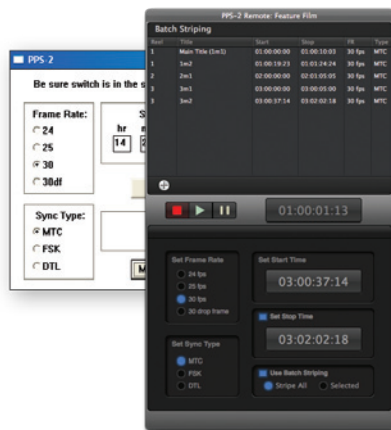
JLCooper was one of the developers of the MIDI Time Code Standard. In 1987 we designed and manufactured the world's first synchronizer that supported MTC. We continue to offer innovative solutions to complex synchronization challenges in today's studio and post environments.

PPS-2 SYNCHRONIZER

JLCooper's PPS-2™ is ideal for anyone who owns a sequencer, drum machine, workstation or hard disk recording system, and needs to sync to tape.

PPS-2 offers the advantages of several synchronizers in one versatile package. It reads and generates SMPTE time code and converts SMPTE into MIDI Time Code or Direct Time Lock. It also reads and generates JLCooper's "Smart FSK" sync and converts it into MIDI Clock with Song Position Pointer. Jam Sync/Regeneration, Flywheeling, Auto-Merge and a low price make the PPS-2 the best choice for an affordable synchronizer.

PPS-2 remote software for Windows & Mac lets you set SMPTE frame rate and start time when striping.



PPS-2 Features

- Easy to Use
- SMPTE Jam Sync/Regeneration
- 1 MIDI In with Auto Merge and 1 MIDI Out
- SMPTE Stripe can be Started at any Time
- SMPTE 24, 25, 30 & 30 Drop Rates Supported
- 4.25" x 4.7" x 1.6" Weight - 3 lbs.

PPS-2 Rear Panel



PPS-2 Plus Option (Included)

The revolutionary PPS-2 Plus enhancement adds the ability to read MIDI Time Code (MTC) from any source and convert it into SMPTE time code.

This option is user-installed and lets your hard disk recorder or computer based digital workstation control machine synchronizers, automation systems and other devices requiring SMPTE Time Code.

The need to run MIDI signals over long distance is essential for use in recording facilities, theatres, arenas, churches, schools, cruise ships, casinos, nightclubs and other venues using simple twisted pair wiring. Touring professionals also rely on JLCooper MIDI Line Amplifiers to carry MIDI signals long distances over standard audio snakes.

MLA-XLR MIDI Line Amplifier



MLA-XLR™ extends the range of MIDI cables to over 1000 feet using standard balanced audio lines (audio snakes, mic cables, etc.).

It requires no configuration and it's simple to use. Just connect the cables and go.

MLA-XLR pairs can carry data over two standard XLR Mic cables and provide a lower cost expansion option for interfacing with other MLA-1 and MLA-10 units in a network application.

MLA-XLR MIDI Line Amplifier Features

- 1 MIDI Input
- 1 MIDI Output
- 1/4 Rack mount version
- XLR and MIDI connections
- MIDI cable runs over 1000'
- Uses common twisted pair wire
- Multiple units may be networked
- Can be used in pairs or in combination with MLA-1's and MLA-10's
- Dimensions 4.25" x 4.7" x 1.6"
- Weight 3 lbs.



MLA-XLR Rear Panel XLR Connectors



Mount up to four MLA-XLR units in the optional JLC-19" RackTray