

Formerly DIN-LO-11DM

DIN-LOD Line output isolator

- Drives balanced and unbalanced signals long distances
- Eliminates hum and buzz caused by ground loops
- Withstands input levels in excess of +22 dB at 20 Hz
- Easy to use DIN rail format for quick installations

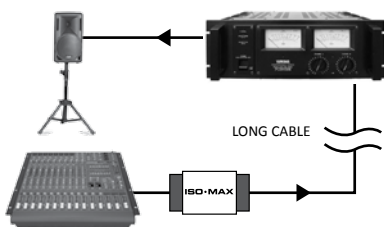


The Iso•Max DIN-LOD is a single channel output isolator for both balanced and unbalanced signals where extreme signal handling is required to drive long cable runs.

The design begins with a gray molded assembly made from UL94-VO flame retardant Noryl that snaps into place onto a standard 35 mm DIN rail for easy installation in a NEMA enclosure. Connections to and from the module are made via removable screw-down wire terminals. Plug and play easy to use, this passive interface does not require any power to work. Inside is a high performance 80% nickel core Jensen transformer that is able to withstand signals in excess of +22 dBu without discernible distortion while delivering a linear response from 2 Hz to 100 kHz with almost zero insertion loss. This provides galvanic isolation between the input and output to eliminate hum caused by ground loops, rejecting noise by as much as 110 dB. To further optimize the performance, a choice of connection point options enable the user to determine the most appropriate grounding scheme to suit the installation.

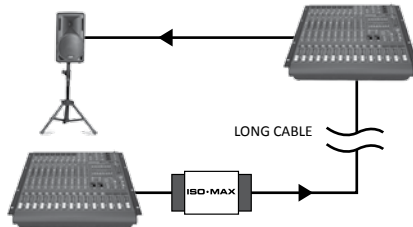
These features make the Iso•Max DIN-LOD a superb choice for the most demanding broadcast, AV and performance venue installations.

Applications



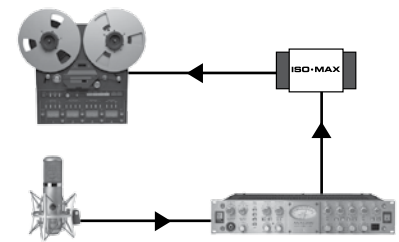
DIN-LOD with a PA system

Eliminating noise in a PA system can sometimes take hours of trouble shooting, particularly when the mixer, amplifiers and speakers are distanced apart. Simply connect the DIN-LOD at the output of your mixer to instantly eliminate ground loop hum.



Isolating two consoles

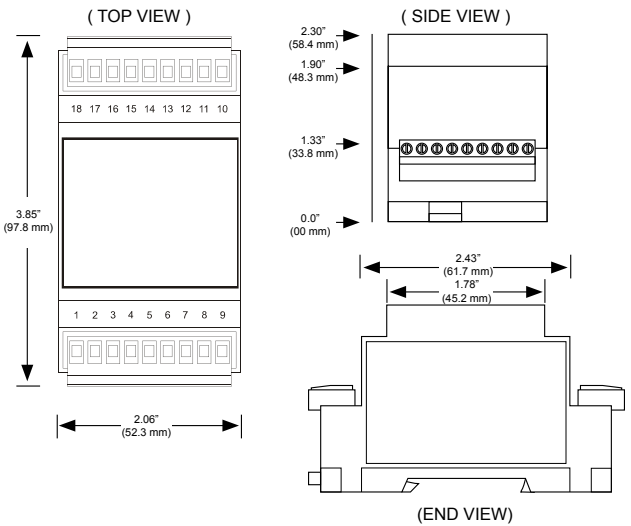
Whether you are isolating two consoles in a festival or experiencing noise when connecting to a drive rack, the DIN-LOD is easily inserted into the signal chain to break the ground loop and eliminate noise as it easily handles huge bass transients without distortion.



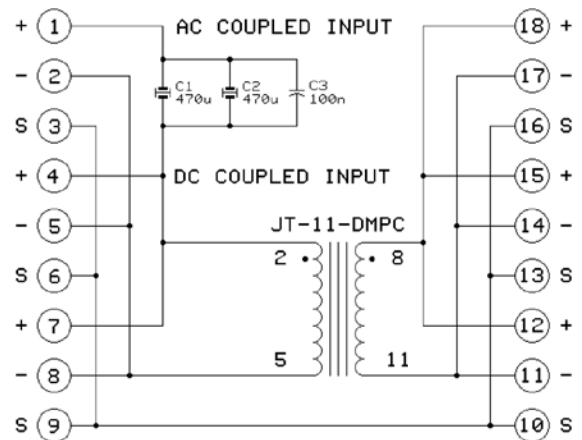
DIN-LOD in the studio

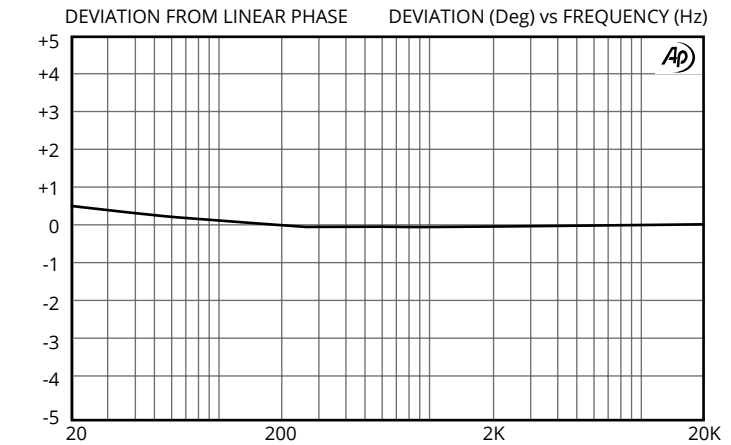
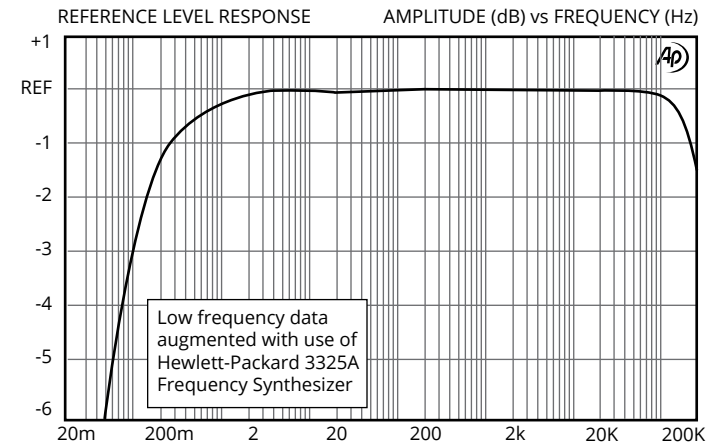
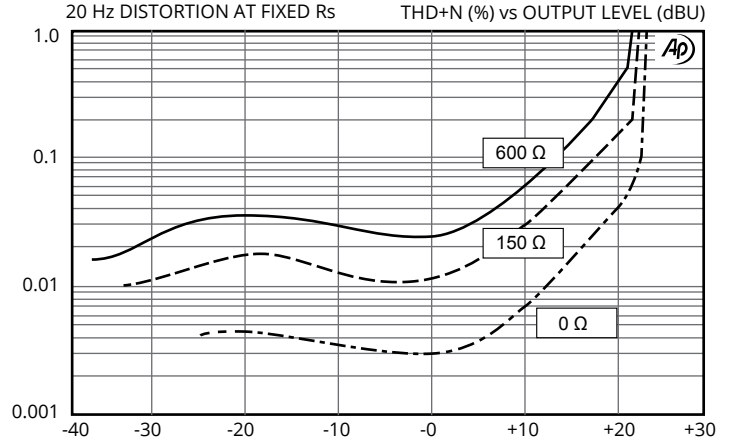
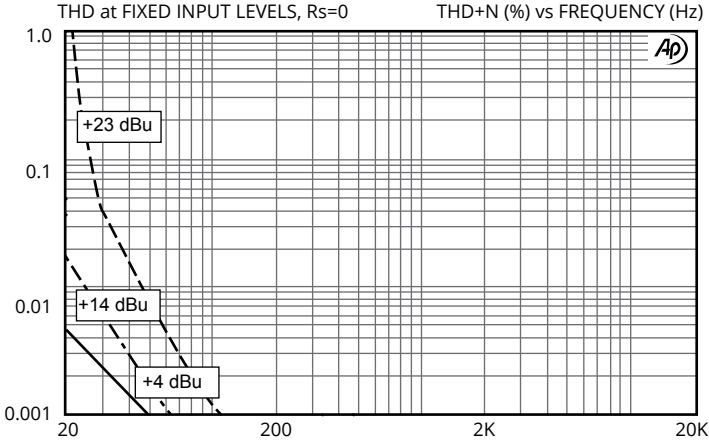
Recording and broadcast studios require a noise-free signal transfer while delivering the most accurate sound possible. The Iso•Max DIN-LOD eliminates ground loops without introducing distortion, phase shift or artifact.

Dimensions



Module Schematic Diagram



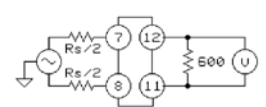


PARAMETER	CONDITIONS	MINIMUM	TYPICAL	MAXIMUM
Input impedance, Zi	20 Hz to 20 kHz, 0 dBu, test circuit 3	670 Ω	680 Ω	690 Ω
Voltage gain	1 kHz, 0 dBu, test circuit 1, Rs = 0 Ω	-1.2 dB	-1.1 dB	-0.9 dB
Magnitude response, ref 1 kHz	20 Hz, 0 dBu, test circuit 1, Rs = 0 Ω	-0.1 dB	-0.02 dB	±0.0 dB
	20 kHz, 0 dBu, test circuit 1, Rs = 0 Ω	-0.1 dB	±0.00 dB	+0.1 dB
Deviation from linear phase (DLP)	20 Hz to 20 kHz, 0 dBu, test circuit 1, Rs = 0 Ω		+0.3/-0°	±1.0°
Bandwidth	LF -3 dB re 1 kHz, test circuit 1, Rs = 0 Ω		0.10 Hz	
	HF -3 dB re 1 kHz, test circuit 1, Rs = 0 Ω		15 MHz	
Distortion (THD)	1 kHz, +4 dBu, test circuit 1, Rs = 0 Ω		<0.001%	
	20 Hz, +4 dBu, test circuit 1, Rs = 0 Ω		0.004%	0.03%
Maximum output level	20 Hz, 1% THD, test circuit 1, Rs = 0 Ω	+20 dBu	+22 dBu	
Common-mode rejection ratio(CMRR)	60 Hz, test circuit 2		110 dB	
	3 kHz, test circuit 2	75 dB	85 dB	
Output impedance, Zo	20 Hz to 20 kHz, 0 dBu, test circuit 4		80 Ω	
Optimal cable length	input		1 m (3')	3 m (10')
	output		30 m (100')	75 m (250')
Temperature range	operation or storage	0°C		70°C
Breakdown voltages 60 Hz, 1 minute test duration*	winding to winding	250 V RMS		
	winding to frame	500 V RMS		

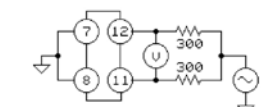
All levels are output unless noted

All minimum and maximum specifications are guaranteed. Unless noted otherwise, all specifications apply at 25°C. Specifications subject to change without notice. All information herein is believed to be accurate and reliable, however no responsibility is assumed for its use nor for any infringements of patents which may result from its use. No license is granted by implication or otherwise under any patent or patent rights of Jensen Transformers, Inc.

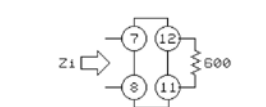
Test Circuit 1:



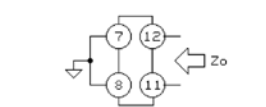
Test Circuit 2:



Test Circuit 3:



Test Circuit 4:



* IMPORTANT NOTE: THIS PRODUCT IS NOT INTENDED FOR USE IN CIRCUMSTANCES WHERE THE DC OR PEAK AC VOLTAGE BETWEEN INPUT AND OUTPUT CONNECTIONS EXCEEDS 34 VOLTS OR WHERE ITS FAILURE COULD CAUSE INJURY OR DEATH.