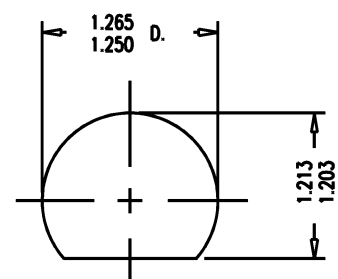
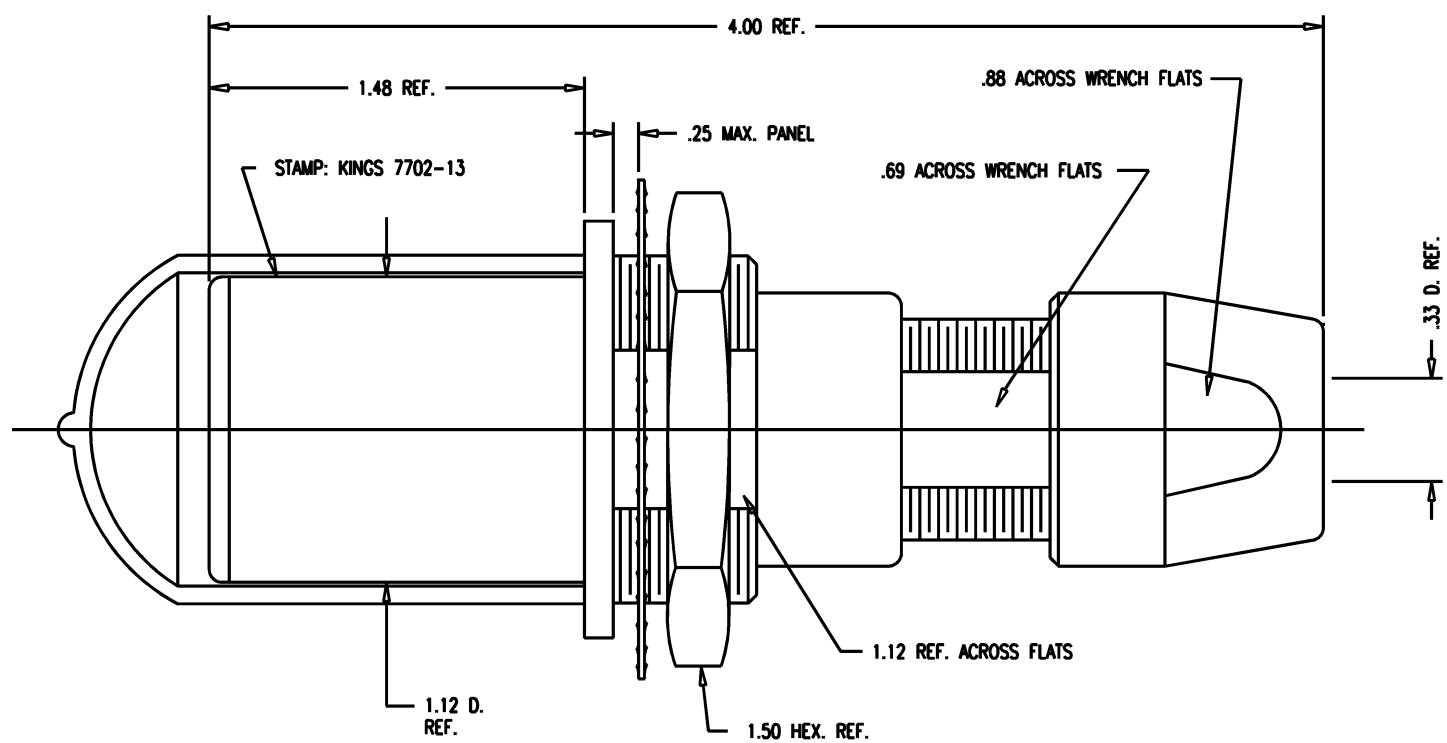


DASH NO.	M CODE	MADE FROM
----------	--------	-----------

GSD

7702-13

REVISIONS	
ISSUE	CHANGES
0	ER 36989 KH 05/29/96
1	CN 37005 A KH 06/13/96
2	CN 37238 D KH 02/03/97



MOUNTING HOLE

GSD

- NOTES:**
- FOR USE WITH 760 CABLE GROUP (BELDEN 8232)
 - FOR CABLING INSTRUCTIONS SEE KAI-8010.
 - FOR CRIMPING USE DIE KTH-2002.
 - MATERIALS:**
 - INSULATORS-TEFLON, ASTM-D-4894
 - LOCKWASHER-SPRING STEEL, ASTM-A-682
 - GASKETS-SILICONE RUBBER, ZZ-R-765
 - CAP-VINYL
 - K-GRIP SLEEVE-COMMERCIAL BRONZE, ASTM-B-135
 - CENTER CONTACT } BER. COP., ASTM-B-196
 - OUTER CONTACT SPRING }
 - INSERT
 - ALL OTHER METAL PARTS-BRASS, ASTM-B16

- FINISHES:**
 - CENTER CONTACT } GOLD PLATE PER MIL-G-45204
 - OUTER CONTACT SPRING }
 - LOCKWASHER } KINGS TARNISH RESISTANT FINISH (TR-5)
 - NUTS }
 - COLLET }
 - BODIES }
 - ALL OTHER METAL PARTS-SILVER PLATE PER QQ-S-365
- ELECTRICAL CHARACTERISTICS:**
 - NOMINAL IMPEDANCE: 75 OHMS
 - FREQUENCY RANGE: DC-500 MHZ
 - VOLTAGE BREAKDOWN: CENTER CONDUCTOR/INNER GROUND: 1500 VRMS
 - INNER GROUND/OUTER GROUND: 500 VRMS

KAM6623

SCALE 2:1	
APPROX SURFACE AREA	
WAS: E-16566	
USED ON	
REF: KP-8022-767-400	
JACK, BULKHEAD, TRI-LOC SERIAL DIGITAL	
DRAWN KH	DATE 05/29/96
DESIGN DW	DATE 05/30/96
APPR.	DATE

KINGS
ELECTRONICS CO., INC.
TUCKAHOE, NEW YORK 10707

7702-13