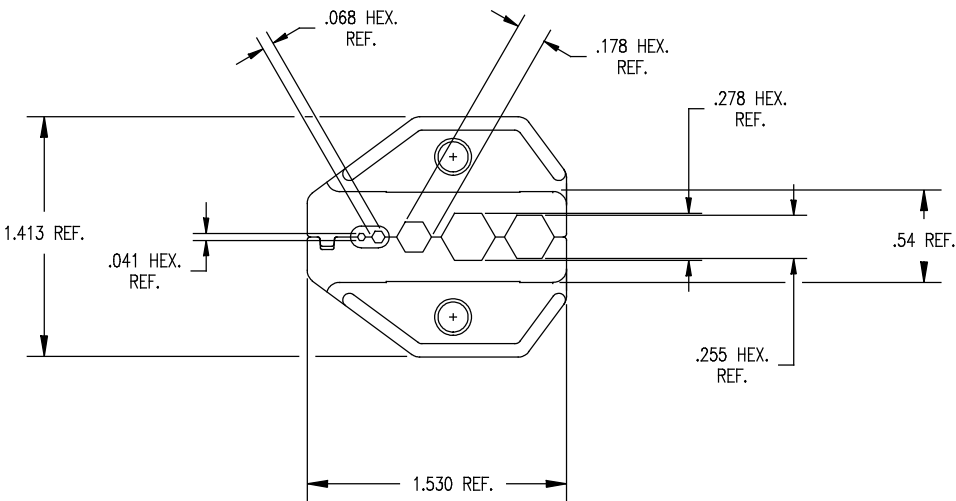
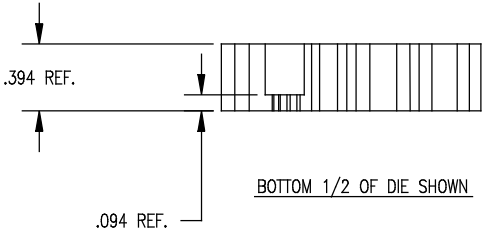


DASH NO.	M CODE	MADE FROM
----------	--------	-----------

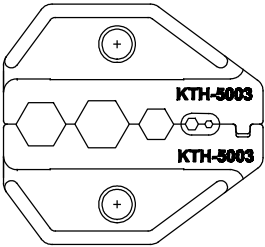


NOTES:

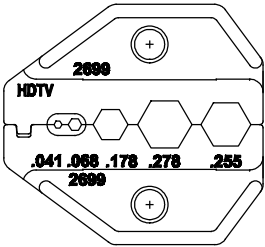
- USE THE FOLLOWING CAVITIES FOR CABLES NOTED BELOW:
 - FOR BELDEN 1855A, 1865A, AND COMMSCOPE 7538 CABLE GROUPS, USE .041 AND .178 HEX. CAVITY.
 - FOR BELDEN 9209A, 1505A, 1506A, AND 8241 CABLE GROUPS, USE .041 AND .255 HEX. CAVITY.
 - FOR BELDEN 1694A, USE .041 AND .278 HEX. CAVITY.
- FINISH: BLACK OXIDE

UNLESS OTHERWISE SPECIFIED		
1. TOLERANCES: FRACTIONS & 2 PLACE DECIMALS ± .010	2. REMOVE ALL BURRS, BREAK SHARP EDGES .005 MAX.	7. ALL LEAD THREADS TO BE CHAMFERED 45° TO ROOT DIAMETER.
3 PLACE DECIMALS ± .004	3. NO FILLETS PERMITTED.	★ CRITICAL DIMENSIONS
ANGLES ± 1°	4. SURFACE ROUGHNESS 63 MICROINCHES RMS MAX.	
CONCENTRICITY OF ANY 2 DIAMETERS MAY NOT EXCEED HALF THE SUM OF THEIR TOLERANCES.	5. ALL DIMENSIONS PRIOR TO PLATING.	
	6. ALL PLATING IN ACCORDANCE WITH KER 10004.	

GSD



BACKSIDE MARKING



FRONTSIDE MARKING

KTH-5003

REVISIONS	
ISSUE	CHANGES
0	ER 39294 JLA 05/20/05
1	CN 39302 E JLA 07/20/05
KTH-5003	
KTH-5003	
SCALE 3 : 2	
APPROX SURFACE AREA N/A	
USED ON KTH-5000	
REF: KTH-5000	
CRIMP DIE	
DRAWN J. ALBRECHT	DATE 05/19/05
DESIGN J. ALBRECHT	DATE 05/20/05
APPR.	DATE
 ROCK HILL, SOUTH CAROLINA 29730	
KTH-5003	