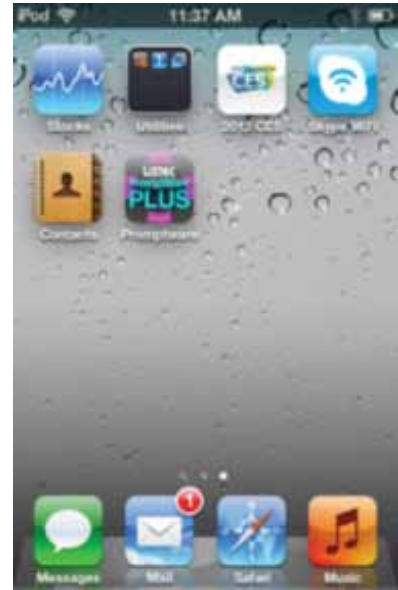




PromptWare PLUS

Before installing your iPod Touch/iPad/iPhone or Smart Phone into the adjustable clip, download the PromptWare PLUS™ app from the appropriate market. This is a free App from iTunes or the Android Market.

Once the correct app is downloaded to your iPod Touch/iPad/iPhone or Smart Phone: Tap on the Listec PromptWare PLUS icon



This will bring up the Scripts page

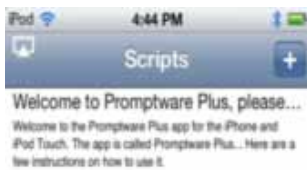
Note: The Welcome to PromptWare Plus is just a demo script. If you would like to delete, just tap on script and a popup menu will come up. Hit Delete and then Yes.



Inserting and Editing Scripts:

There are a couple of different ways to start bringing in your scripts to the PromptWare PLUS Software

You can tap the + sign in the upper right hand corner and type your scripts directly into the Edit Script Screen. Then tap Save. This will save direct to your Scripts.



Inserting Scripts via E-Mail Copy and Paste/Typing Scripts into Software and iTunes File Sharing:

You will need an E-Mail account set-up into your iPod Touch/iPad/iPhone. Make sure it is set-up to the internet/Wi-Fi or your service provider. Once this is complete, you are ready to send your script to your E-Mail account. (Note: files are a .TXT)

Using the Copy and Paste feature, you can transfer your script from the inbox to the PromptWare PLUS application. To do this, pressing down and holding at the top of the script in your E-Mail until you see a bubble then releasing and selection "Select All", then tap "Copy".

Now open the PromptWare PLUS™ application, tap the + sign (top right on the main Scripts page) give the script a Title, tap in the Script Text box and tap "Paste", the "Save" this will load your script into the Script Page. (There is a link to a comprehensive video tutorial on how to do copy and paste on the Tiffen web site).



You can also type your scripts directly into the PromptWare PLUS™ Software

Tap the + sign in right hand corner, your Edit Script page will come up with the cursor blinking in the Title. Enter your Script name; once this is completed tap in the Script Text box and start typing your script, then tap Save. After the script has been Saved it will go right to the Scripts Page.



The PromptWare PLUS™ Software will also allow you to use iTunes File Sharing:(For the iPod Touch/iPad and iPhones)

Make sure your device is plugged into your computer that has iTunes installed on. This will take a couple of seconds for the device and iTunes to Sync.

Click on your device, along the top of the menu click on apps, scroll down to "File Sharing", click on PromptWare, click on the add and open the file you have the scripts saved in and drag into the "PromptWare Documents" then click on "Sync". Once the "Sync" is completed your script will now be installed in the PromptWare PLUS™ Scripts page.

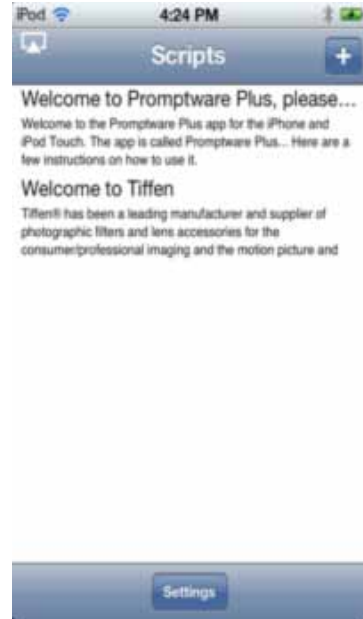


Start Prompting:

Tap on the PromptWare PLUS™ Software App.



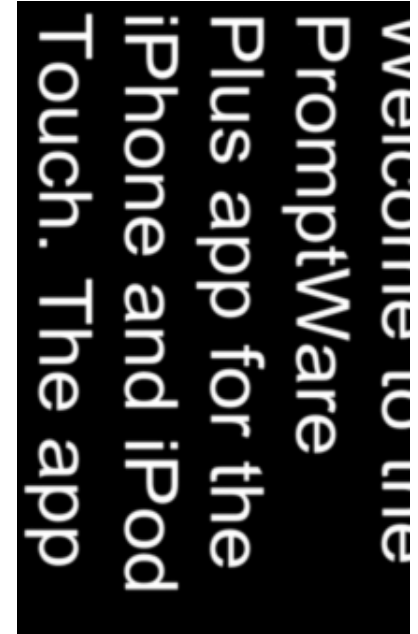
Tap on the script that you would like to prompt



Then tap on Start



The script will start prompting



Using the Touch Screen to Control Script if no Wireless Remote is being used:

If "Auto Start" feature is enabled your script will start scrolling automatically. If "Auto Start" is disabled you will need to tap the screen once to start the script scrolling.

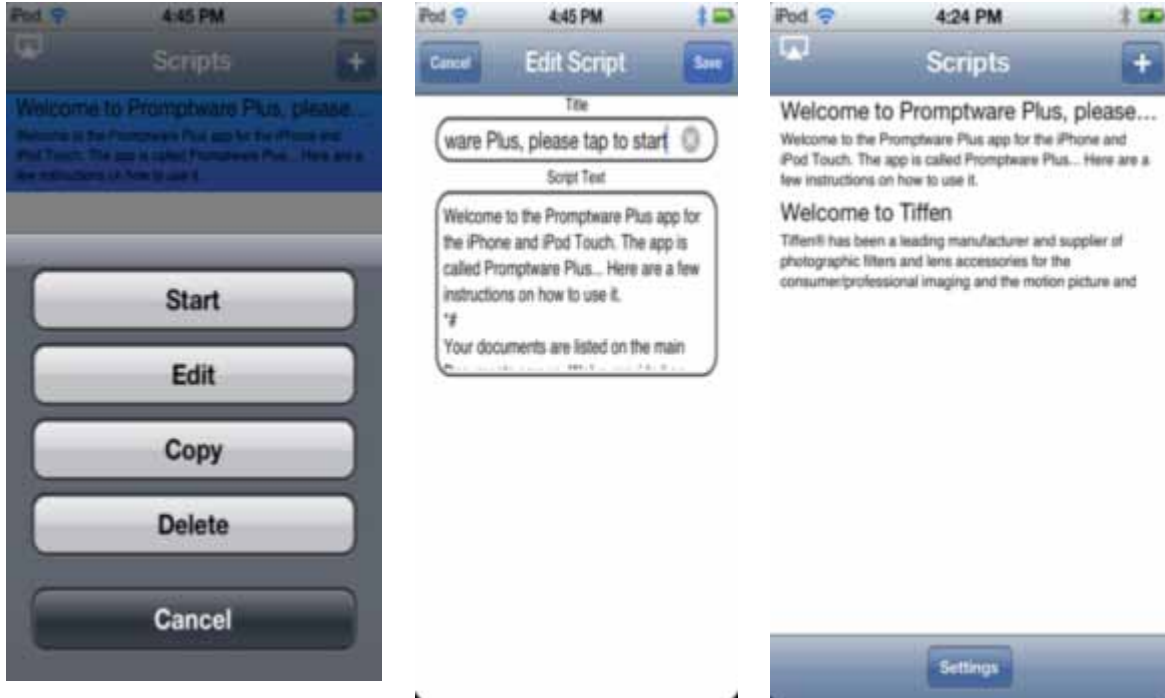


To pause the script, tap the screen once, to resume tap once more. To stop prompting pause the script and then tap the "Return" icon at the top right of the screen. This is the box with the arrow coming out.

Editing Scripts:

From the Script page tap on the script you would like to "Edit"

Place the cursor by tapping the script where the changes need to be made, make the changes that are required and tap "Save" up in right hand corner. The script then will be saved back in the Script page.



Prompting Settings:

Display Settings

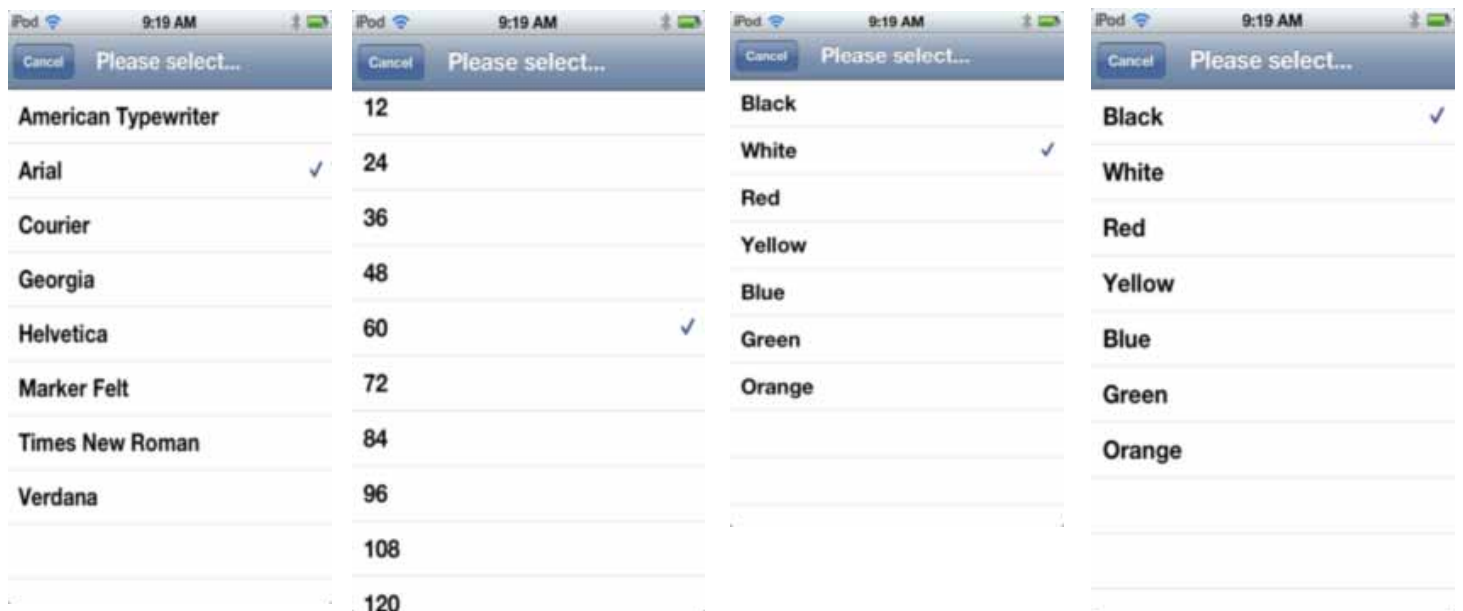
There are four different settings Display Settings, Prompting Settings, Start Settings and Remote Settings To set just tap on the screen of our choice.

Font Name: There are (7) different choices.

Font Size: 12 to 120.

Font Color: There are (7) different colors to select.

Background Color: There are (7) different colors to select.



Prompting Settings:

Orientation: There are two setting Portrait and Landscape. If you are going to mount your devise into the PW-04 Hardware you will need to set the Orientation to Landscape.



Mirrored Display: If you are going to read your scripts as a direct view prompter then you would not use the mirror image. If you are setting up in the PW-04 Hardware you will have to put the check in "Yes".



Loop: Tap "Yes" if you would like to enable any script to reset itself and start from the beginning as soon as the script finishes. Tap "No" and the script will end at the end of the script.



Scrolling Speed: If you have not purchased the PW-04 Hardware Kit or the PW-04REMOTE this is how you would control your script speed by a fixed setting. 1 would equal Slow and 10 would equal fast.

Slow Time/Fast Time (secs): The speed of the script can be fine turned by utilizing the "Slow Time" (settings from 4 to 79) and the "Fast Time" (setting from 1 to 17) options. This will allow you to input the slowest and the fastest times that it takes the "Talent" to read one screen of text. For example: If at the given font size the "Talent" takes between 3 and 5 seconds to read a complete screen of text you can then set the "Slow Time" to 3 and the "Fast Time" to 5, then any adjustment to the speed made with the remote control will be increments between these two speeds.



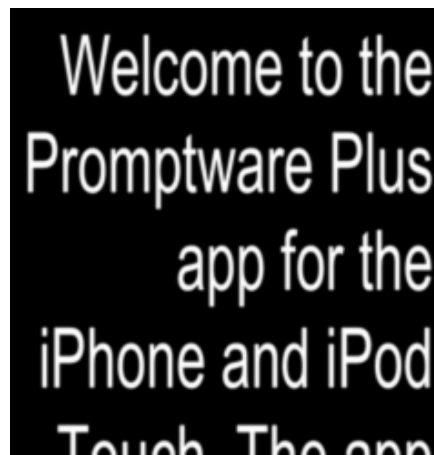
Justification: There are 3 different setting Left, Center or Right. This is how you would like for your scripts to appear when in prompt mode



Left Justification



Center Justificatiion

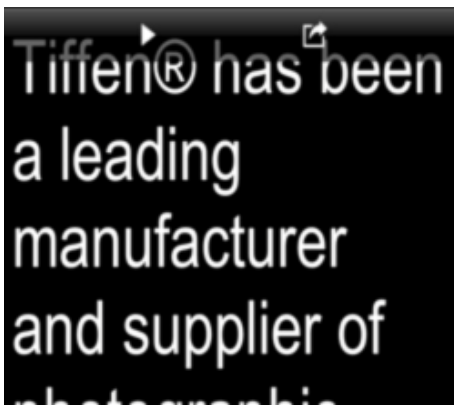


Right Justification

Start Settings: There are two different settings-Auto Start-this will allow the script to start scrolling if "Yes" is checked, If "No" is check the once to you start your script if will be in pause mode. You would then have to tap the screen to start the scrolling. Start Delay only works if you have Auto Start set to "Yes", this works just like a countdown clock. This has a 0 second to a 10 second delay



Auto Start



Pause Mode



Start Delay



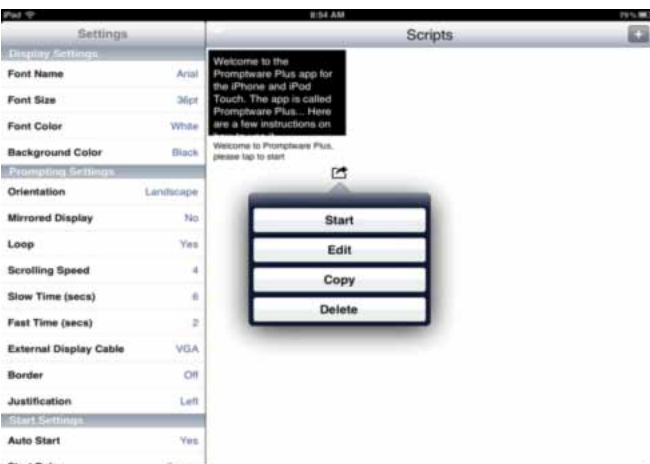
Remote Settings: This is so you can select your PW-REMOTE (Wireless)
(The Wired controller is another option that is available to purchase)

Break Marker: This is a character embedded into your script that will allow you to jump to certain points within your scripts via using your wireless remote. (< > keys) The default setting is *#. If you would like to customize this setting-Tap on the Break Marker to make your changes. Hit the back space key to clear the default setting and type in the commands you prefer utilizing. When scripts are being prepared and jumping to certain points are required insert your commands into your scripts.



Screen Setups are a different layout between the iPod Touch and the iPad. Once you have opened the PromptWare PLUS™ Software below is the layout of the main menu screen. All of the settings are the same as the iPod Touch. (Please see above for definitions.)

To start prompting tap on box with arrow coming out and start.



The Tiffen Company
 90 Oser Avenue, Hauppauge, NY 11788
 1-800-645-2522 • 631-273-2500 • tiffen.com