

CAMERA-TOP PORTABLE FIELD MONITORS

M-CT710 | 7" Portable Camera-Top Field Monitor



- 7-inch LCD display attaches directly to video or HD video cameras
- A must-have tool for photographers and videographers
- Focus clearly on shots with the Focus Assist (Peaking filter) feature and take the guesswork out of framing
- Converts tiny built-in camera screen to easy-to-view display
- Shoot hard-to-reach places without ladders, stools or hazardous climbing

Peaking Filter



The M-CT710 monitor kit provides a lightweight 7" 1024 x 600 LCD monitor that is perfect for photographers and videographers looking for a simple, inexpensive monitoring solution. This unit offers a composite video input and audio input, along with HDMI In/Out connectivity. A variety of features include a 3.5mm stereo headphone jack, rear speaker for audio monitoring, Auto Aspect Ratio Detect, Zoom, and full Color Adjustment, and Focus Aid (Peaking Filter). Users also have the ability to power this monitor using a standard DSLR, camcorder or AA battery for mobile on-the-go monitoring.

Accessories provided include a mini-HDMI to HDMI cable, standard HDMI cable, AC/DC power supply, hot shoe camera mount adapter, dual battery mount, DSLR battery, battery charger and sunhood.

Compatible with the following batteries: Canon BP511 / Canon LPE6 / Nikon EN-EL15 / Nikon EN-EL3 / AA / Canon BP-970G / JVC BN-V438U / Panasonic CGA-D54 / Panasonic VW-VBG6 / Sony NP-QM91 / Sony NP-F970

2 year warranty with product registration. Visit http://www.lcdracks.com/support/product_registration.php

Screen Size	7" TFT LCD
Pixels	1024 x 600
Aspect Ratio	16:9
Brightness (cd/m ²)	350
Contrast Ratio	500:1
Viewing Angle	75° / 75° (L/R), 70° / 70° (U/D)
Audio Output	2.5W Speaker, 3.5mm Stereo Jack
Input Signal	HDMI, Video, Audio
Power Consumption	≤8W
Dimensions	7.25"W x 5.75"H x 1.125"D
Weight (w/o battery)	12oz / 340g

Photo & video applications:

- low angle
- bird's eye view
- self-portrait
- family portrait
- table-top photography
- online promotional video and presentations
- home movies
- landscapes
- architecture
- astronomy

APPLICATIONS



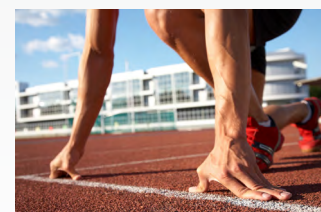
The camera-top monitor makes it easier to frame video action shots from any angle. Telescoping camera poles.



A camera-top monitor can be used when a camera is mounted on a monopod to allow the user to frame the photo from above the subject.



Shoot photos from a bird's eye view



Use a camera-top monitor to take shots from difficult low angles or at ground-level.

Battery Assemblies

DSLR Batteries

Marshall camera-top monitor battery assemblies allow monitors M-LCD, M-CT7, and M-CT6 to be powered using standard AA, DSLR, or Camcorder batteries.



AA Batteries



Camcorder Batteries



Camera Bracket / Mount / Sunhoods

M-SUN6 / M-SUN7 - Sunhoods

Marshall's M-SUN6 or M-SUN7 sunhoods mount onto a camera-top monitor to shield it from the glare of the sun to let you see the monitor screen clearly.



M-SM03 - Hot Shoe Mount

The M-SM03 Camera 1/4" Hot Shoe Mount can mount directly to a DSLR shoe mount and allows for the attachment of 7" camera-top field monitors or any other device with a 1/4" mount.



MBR7 - Bracket

The MBR7 bracket can accommodate a camera-top monitor or light, plus a microphone on top of the camera at one time.



MXL® Field Recording Microphone

FR-310 - Hot Shoe Shotgun Microphone



The MXL FR-310 video mic delivers sound that's as focused as the video. Mount it onto your camcorder or DSLR camera, and you'll cut to tighter, cleaner sound recordings. The FR-310 has a three-position gain switch and bass roll-off. It is self-powered by AAA batteries.

FR-500WK Professional Portable Wireless Interview Kit

The FR-500WK Professional Portable Wireless Interview Kit is designed for videographers conducting interviews or recording onscreen talent via an easily concealed lavalier microphone. The lavalier mic is used with the transmitter while the receiver can be mounted directly onto the hot shoe mount of a DSLR camera. The FR-500WK provides high sound quality in a compact, portable design, and it has a long transmission range - perfect for field work.



Camera-Top Monitor Case / HDMI Cables

M-SC7 - Camera Case

This case contains a removable, padded section to strap, secure and protect your camera-top field monitor, and it has room for accessories.



HDMI Cable



Available in 2-20ft