

Marshall Electronics

PS-102-HDSDI / HDI

StreamVu Tv Producer Station

*For Composite Video, HDSDI Video,
HDMI Video plus Stereo Audio Broadcasting on
The StreamVu Tv Service*



Quick Start Guide Ver. 1.0

PS-102-HDSDI / HDI StreamVu Tv Producer Station

Table of Contents

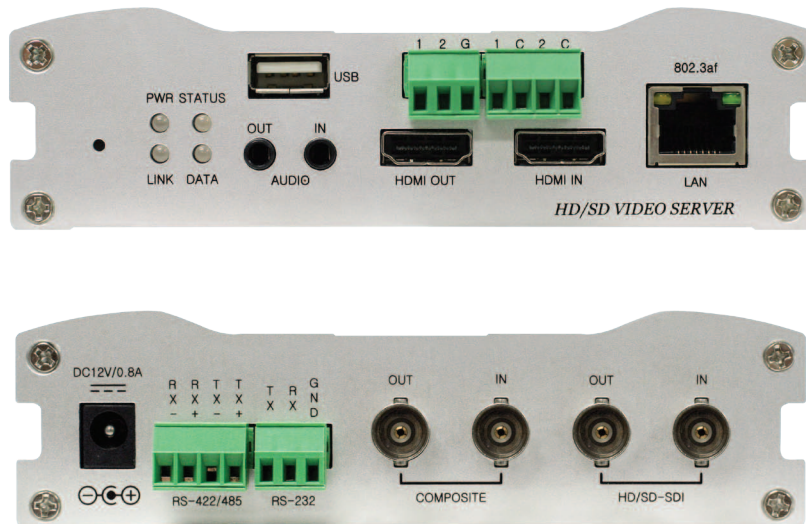
1. Unpacking	4
2. Warranty	4
3. Configuration:	5
IP Configuration	5
PS-102-HDSDI / HDI	6
Main Setup Page	6
Video Setup Page:	7
AUDIO Setup Page	8
4. Establish your Producers Account:	8
Registering the PS-102 to Your StreamVu Account	8
Power and Signal Connections	10
Start Broadcasting	11
5. Help:	
StreamVu Tv	15
Marshall Electronics	15

1. Unpacking

Enclosed with PS-102-xxxx are the following:

1. PS-102-(HDSDI or HDI)
2. Power Supply (AC to 12VDC)
3. 6 Foot Ethernet Cable
4. Side mounting rails
5. This manual
6. Software CD

Carefully inspect all parts for any obvious physical damage.
The PS-102HDSDI and the PS-102-HDI have the same outer appearance.
On the PS-102-HDI the HDSDI BNC connectors are inactive.



2. Warranty

Marshall Electronics warranties to the first consumer that this PS-102-HDSDI / HDI Producers Station will, under normal use, be free from defects in workmanship and materials, when received in its original container, for a period of one year from the purchase date. This warranty is extended to the first consumer only, and proof of purchase is necessary to honor the warranty. If there is no proof of purchase provided with a warranty claim, Marshall Electronics reserves the right not to honor the warranty set forth above. Therefore, labor and parts may be charged to the consumer. This warranty does not apply to the product exterior or cosmetics. Misuse, abnormal handling, alterations or modifications in design or construction void this warranty. No sales personnel of the seller or any other person is authorized to make any warranties other than those described above, or to extend the duration of any warranties on behalf of Marshall Electronics, beyond the time period described above. Due to constant effort to improve products and product features, specifications may change without notice.

3. Configuration

You must configure the Input Format and the Monitor Output before initial use and whenever the input source or output monitor changes. You can also set a name for your PS unit and change the date, time and time zone to match your broadcast location. This configuration can be done offline using any computer with an Ethernet connector. You must know the current IP Address of the computer you are using.

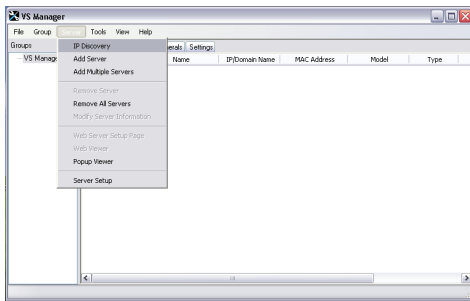
IP Configuration

Connect the Producers Station to the computer using a standard Ethernet Patch cable.



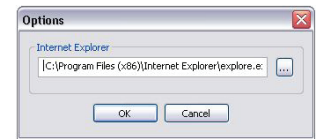
1. Copy the file VS Manager into a File Folder on your "C" Drive called "VS Manager" open the folder and right click the "VS Manager.exe" file and "Send to" "Desktop" (create shortcut). This will place a Shortcut on your Desktop, which should look like the Icon to the left.

VS Manager uses Internet Explorer (32 Bit) as a Host Browser. In fact, all Marshall H.264 Products use Internet Explorer as a Browser, no other Browsers are supported at this time. Double click the Icon to launch VS Manager.

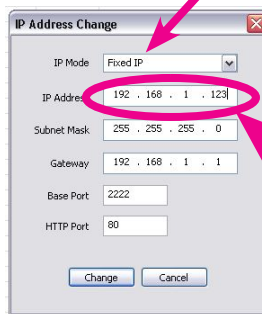
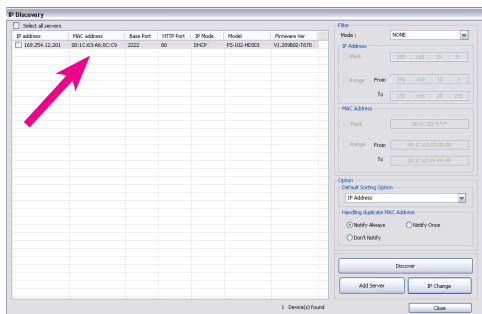


Important Note for Windows 7 64Bit Users, you will need to change the default path for opening Internet Explorer so it opens the 32Bit Browser. In VS Manager go to the "Tools Tab", then "Options" change the Path to: C:\Program Files (x86)\Internet Explorer\explore.exe

The Graphic on the right shows the changed path. The Home Page of VS Manager will open,

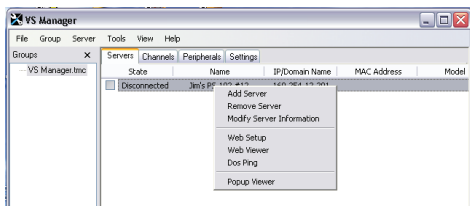


2. In VS Manager select **IP Discover**



3. Select **IP Change**

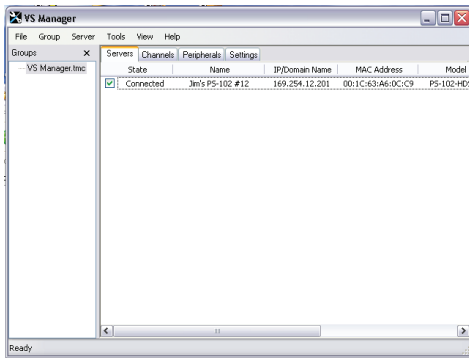
- a. Highlight each PS-102 unit one at a time.
- b. Set the IP Mode to Fixed IP
- c. Set the IP address to match the domain of the computer you are using. The first 3 groups of three digits of the IP Address (192.168.001.xxx) should be the same. The last three digits can be from 001 to 254 and cannot be duplicated within the network.



4. When the IP address has been successfully changed, highlight the unit and click the Add Server button.

- a. Give the server a name and click Add.
- b. Then click Close. This will return you to the main VS Manager Page.

3. Configuration



5. When on the main VS Manager page Right Click the unit you want to configure and select Web Setup

PS-102-HDSDI / HDI



After Selecting Web Setup you will be asked to Sign In to the server:

- the default User Name is **admin**
- the default password is **1234**

You may select Remember my password which will bypass this security step in the future when using the same computer.

Main Setup Page

On the Main Setup Page You Can:

“System ID” Field

Allows you to put a Title (15 Character) on the Live View Page which can be Viewed in the Internet Explorer Interface. This is switched On or Off from the bottom of the Video Page (information Display)

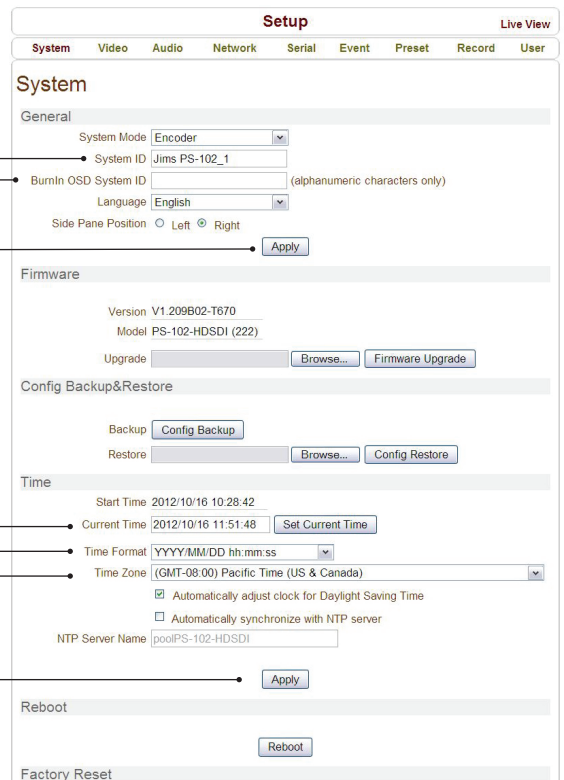
“Burnin OSD System ID” Field

Allows you to put a Title (15 Character Alpha/Numeric Only, no spaces) that will be Burned into the Stream and will go on Air. This is switched On or Off from the bottom of the Video Page (Burnin OSD)

Enter System ID
Enter Burn in System ID
Note the APPLY Button for this section

Current Time
Change Time Format
Time Zone

Note the APPLY Button for this section

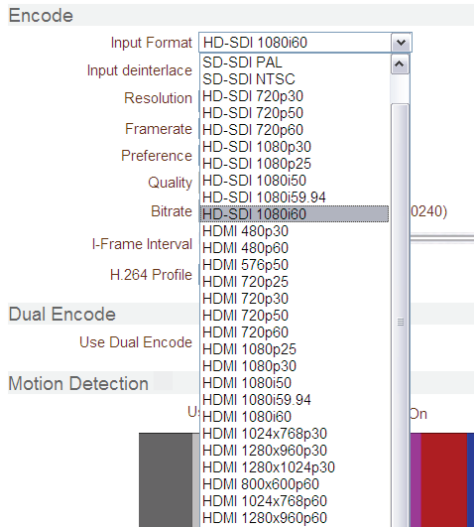


When done making changes on this SETUP Page click “Apply” for each section to save your changes and then click the VIDEO Tab at the top.

3. Configuration

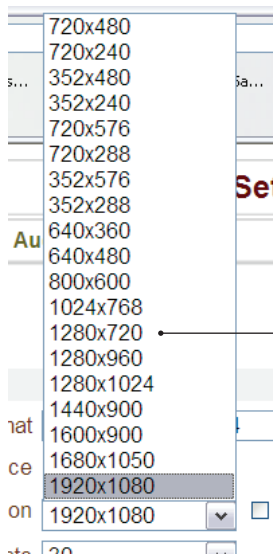
Video Setup Page

As mentioned earlier you must select the Input Format and Resolution of your video signal.



1. Choose the Input Format of your video signal from the drop down list.

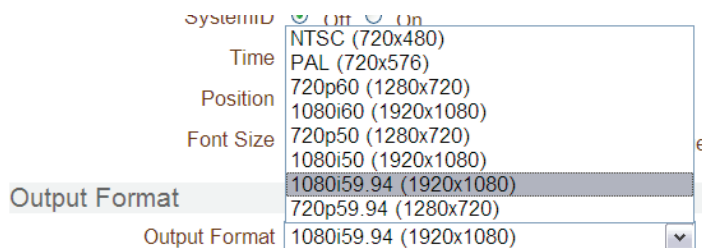
If your source is Interlaced you might wish to select "Input deinterlace" "On", as progressive video presents a better video experience to the Viewer over the Internet.



2. Choose the Encoder Resolution from the Resolution drop down menu.

Note: In most cases this will be the same as the Input Format; however you can choose to stream at a lower resolution in order to save bandwidth.

If your Source is 1080, we have found that it's a better use of Bandwidth to select 1280x720 as a Transmission Resolution.



3. At the bottom of the VIDEO Setup page select the output Format to match your preview monitor.

Note: This setting is to be able to match the Output Video to your monitor's Input.

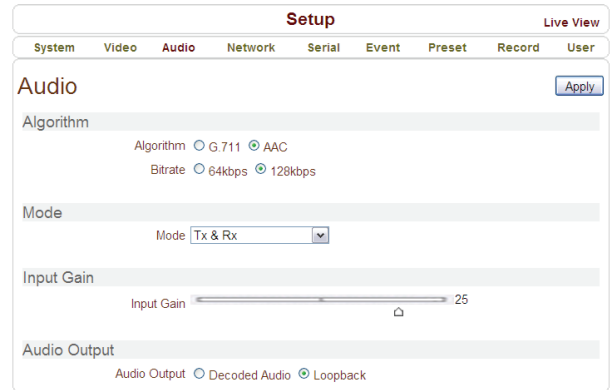
When you are finished making changes to the VIDEO Setup Page click "Apply" to save your changes and then the AUDIO Tab at the top of the page.

3. Configuration

AUDIO Setup Page

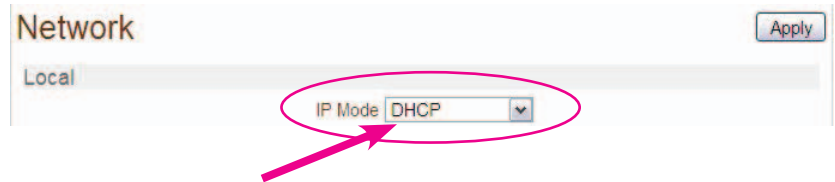
On the AUDIO Setup Page make certain that the selections are as shown to the right.

1. Algorithm AAC
2. Bitrate 128kbps
3. Mode TX-only
4. Input Gain. May be adjusted as necessary
25 is Unity Gain
5. Audio Output Loopback



PLEASE NOTE:

When you are finished making changes to the AUDIO Set up page click “Apply” to save your changes and then select the NETWORK Tab at the top of the page...



On the Network page change the IP MODE to DHCP and click “Apply”

4. Establish your Producers Account

Many of the functions that follow must be performed from a device that is connected to the internet with a functioning web browsing program like Internet Explorer, Safari, Firefox, or Google Chrome. The device is of your choosing and can be a PC, Smart Phone, or Tablet.

- ➔ This can be done with the PS-102 offline.
- ➔ You will need the following:
 - Access to the Internet
 - The PS-102 MAC Address found on the unit itself or on the outside of the box.
 - A valid Credit card

Registering the PS-102 to Your StreamVu Account

The PS-102 is designed solely for use with the StreamVu TV service. Upon receipt of your PS-102 the unit must be registered to an active StreamVu account to function.

1. Activate an account with the StreamVu service from their web site
<http://www.streamvu.com>.

Select Packages & Pricing from the home menu.

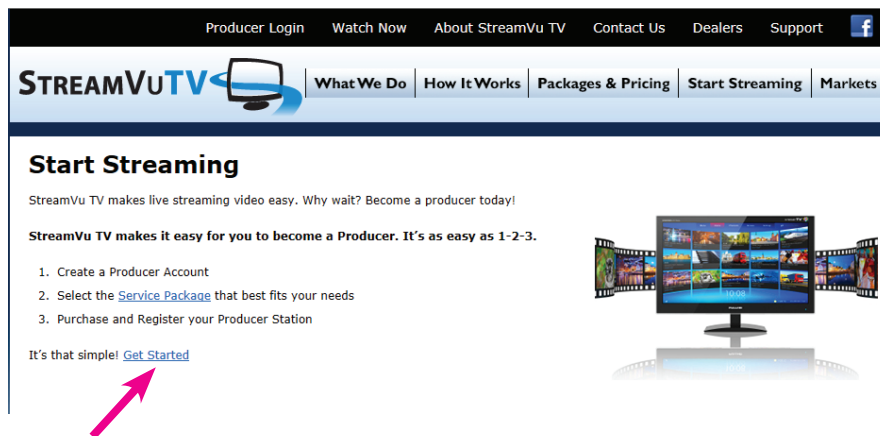


4. Establish your Producers Account

2. Determine the package that best suits your requirements.

Limited Direct Connect	Direct Connect	Direct Connect Pro
\$15/month	\$50/month	\$500/month
\$.50/GB Data Transfer Fees	\$.75/GB Data Transfer Fees	1TB Free - \$.50/GB Data TF
NO Subscription or PPV	YES Subscription or PPV	YES Subscription or PPV
NO Video On Demand	YES Video On Demand	YES Video On Demand
YES Live Events or Channels	YES Live Events or Channels	YES Live Events or Channels
NO Private Broadcast	YES Private Broadcast	YES Private Broadcast
NO Cloud Archiving	YES Archiving (coming soon)	YES Archiving (coming soon)

Most Producers choose the **DIRECT CONNECT** plan which is a terrific value, providing all of the tools you will need to configure your programming. A plus to the DIRECT CONNECT plan is the capability to have any number of Producer Stations broadcasting from different locations or venues on your account.



3. Click on the "Get Started" Hyperlink.

6. After your account is set up, add your new PS-102 to your account by selecting the New/Edit function in System Settings.

The 'Get Started' form contains the following fields: Email, Password, and Dealer Code. A 'Submit Query' button is located at the bottom right of the form.

The MAC address is unique for each Producer Station and can be located on the bottom of the PS-102

MAC
00:1C:63:A6:1D:4E

The 'Producer Station - New/Edit' form includes the following fields: Manufacturer (Marshall), Model Number (PS-11), Ingest Region (WESTERN USA), MAC Address (00:1C:63:A6:1D:4E), and System Identifier (PS410106). A pink arrow points to the MAC Address field.

4. Establish your Producers Account

Power and Signal Connections

Virtually all Video Camcorders and newer Digital SLR Camera Bodies have a connection for Audio/Video (A/V) output.

In the example shown to the right a typical consumer camcorder has a 3 wire (Composite Video plus Stereo Audio) cable that has a 3.5mm plug on one end and RCA connectors on the other end. The output RCA connectors are usually colored Yellow for the video signal and White/Red for stereo audio.

Many professional camcorders have multiple connections for A/V.



3.5mm connector plugged into the camera A/V output

For audio, the connections may be XLR or a 3.5mm jack for headphone audio and a BNC connector for composite video.

- Consult the manual for your camera as the A/V outputs are often multiple purpose and must be configured for A/V output in the camera set-up menus.
- In many situations, inexpensive adapters must be used for connection between a camera, Video switcher plus audio mixer, or a playout device like a DVD player, digital media player, video tape recorder, etc.
- For the example shown, a RCA to BNC connector adapter is required for the yellow video input to the PS-102. A second adapter is used to convert the two audio connectors to 3.5mm stereo audio.



1. Insert the 3.5mm Plug into the Audio In.

Audio can originate from your camera, or an audio mixer in a live broadcast. (Note: The stereo audio jacks are -10dB Line level and will not accept a microphone directly)

2. Connect your network Ethernet cable into the RJ-45 receptacle.

3. Attach your video signal to the appropriate input BNC or HDMI connector depending on your model. The PS-102-HDI version will accept Composite and HDMI inputs. The PS-102-HDSI will accept Composite, HD/SD-SDI and HDMI sources. The HDSI connectors are not active on the HDI model. Video may originate from your camera or Video Switcher



4. Make certain the A/V source is active and outputting signals.

5. Connect the 12VDC Power Plug and watch the LED status indicators start flashing.

4. Establish your Producers Account

Start Broadcasting

1. On any device with a web browser navigate to www.StreamVu.com
2. Select “Producer Login”



3. Enter your **User Name and Password** to access your Producer Station/Channel Control Panel



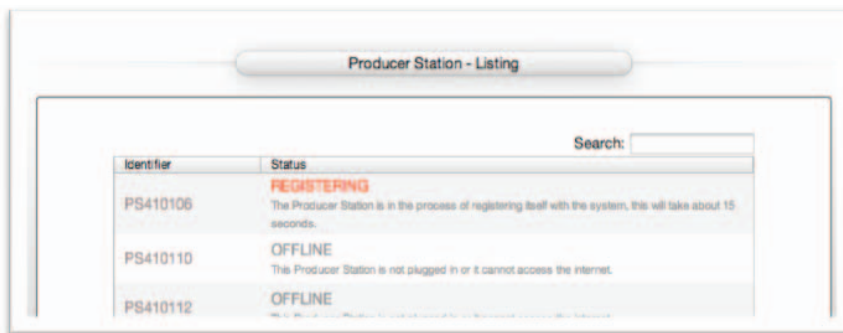
4. The Control Panel will open to the “Producer Station – Listing” page where you can easily see the status of all the producer stations on your account.

Depending on your account type, you will have a number of Channel Control Options. For this guide we will focus on the Producer Station Control Menus and Functions, which are common to all account types.

We see the status of the PS-102 that was added to the account (PS410106) is OFFLINE.

The OFFLINE status will occur when the PS-102 is not connected to the StreamVu service. In this case we have just made all of our signal connections and applied power to start the connection process.

***Note Limited Direct Accounts are limited to a single Producer Station.**



5. Approximately 60 seconds after applying power, PS410106 will find the StreamVu service via the Internet and will automatically begin the process of REGISTERING with the system.

All we have had to do to this point is Configure the video resolutions, make the appropriate connections, add the PS-102 to our account and power up. The hard part of getting the communication link up for our broadcast was automatically performed by the PS-102.

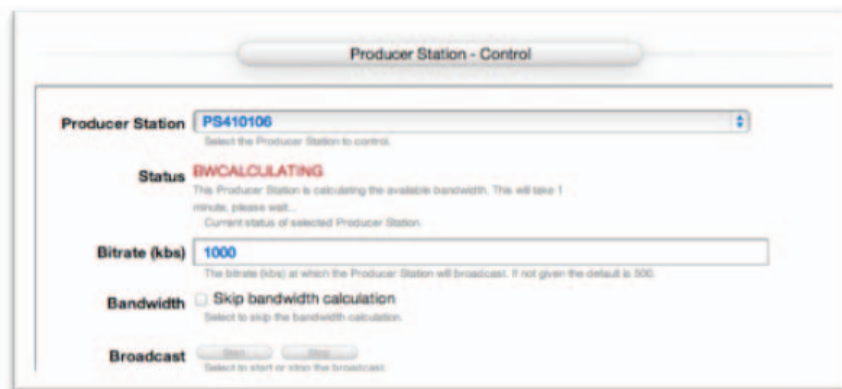
4. Establish your Producers Account



6. After the PS-102 has completed the Registration process, it will indicate it is **READY** to start Broadcasting. Select the **Control Folder** under Basic Settings.

To initiate your broadcast, select the appropriate Producer Station from the drop down menu. Enter your desired transmission bit rate the click on the Broadcast Start control.

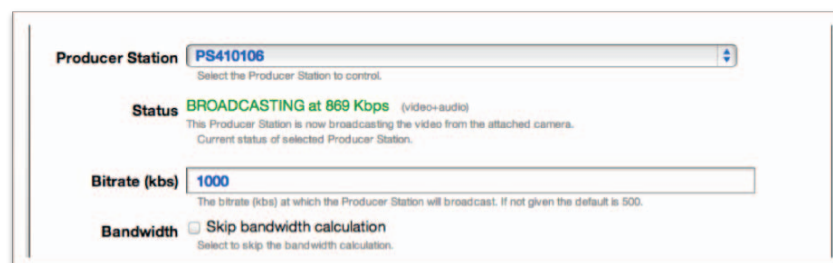
***Note Higher Bit Rates provide Higher Quality but may be limited by your Internet Upload connection speed. Your Internet Service Provider may provide a test page for you to measure Upload Speed, or you can use any number of internet sites (<http://testmy.net>).**



7. The StreamVu System will perform a calculation to determine the optimal upload bit rate that your Internet connection can maintain. This calculation will automatically adjust your bit rate for optimal performance during the broadcast.

***Note this process can be bypassed by selecting the Skip bandwidth calculation checkbox.**

(We do not recommend this)



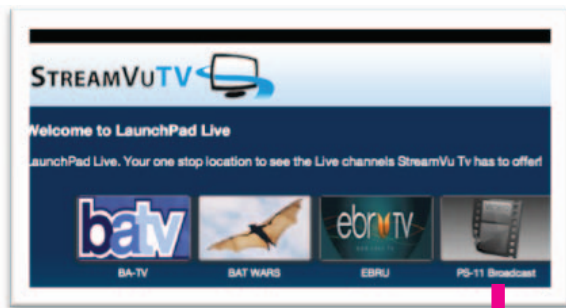
4. Establish your Producers Account



8. Once your broadcast has begun, a Preview Window is available to confirm your channel is on the Air.

9. There are several options that you can make available to the viewer, all of which are accessible from the Producer Station Control Panel.

⇒ You may choose to have your channel listed on the **StreamVu LaunchPad**, (<http://www.streamvu.com/launchpadlive/>) making your live broadcast available to any viewer as shown below.



Producer Station - Control

Producer Station **PS410106**
Select the Producer Station to control.

Status **BROADCASTING at 869 Kbps** (video+audio)
This Producer Station is now broadcasting the video from the attached camera. Current status of selected Producer Station.

Bitrate (kbs)
The bitrate (kbs) at which the Producer Station will broadcast. If not given the default is 500.

Bandwidth Skip bandwidth calculation
Select to skip the bandwidth calculation.

Broadcast
Select to start or stop the broadcast.

Preview [Open preview](#)
Select to link above to preview the Producer Station output.

LaunchPad Place on **LaunchPad**
Select to place your live stream on LaunchPad.

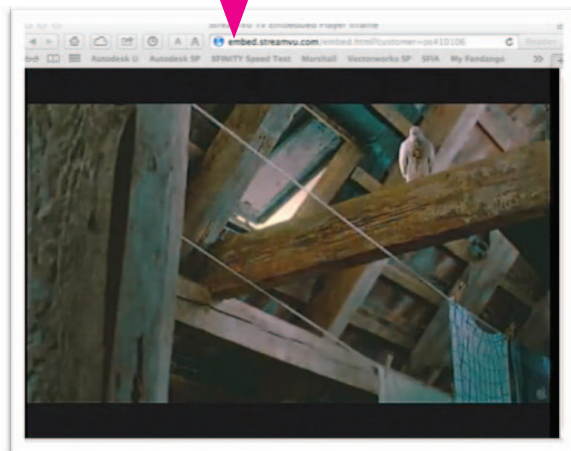
Limited Direct Connect Link <http://embed.streamvu.com/embed.html?customer=ps410106>
Highlight and copy the code above to email to viewers.

Limited Direct Connect iframe code

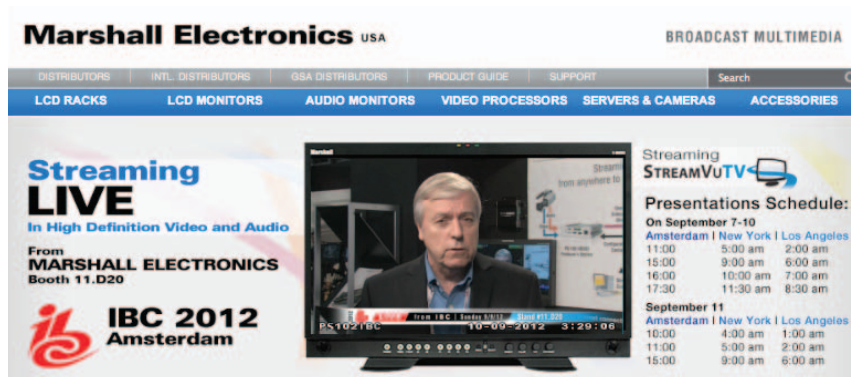
```
<iframe src="http://embed.streamvu.com/embed.html?width=352&height=240&customer=ps410106" frameborder="0" scrolling="no" marginheight="0" marginwidth="0" width="352" height="240" ></iframe>
```


Highlight and copy the code above and place on the web page to display the player.

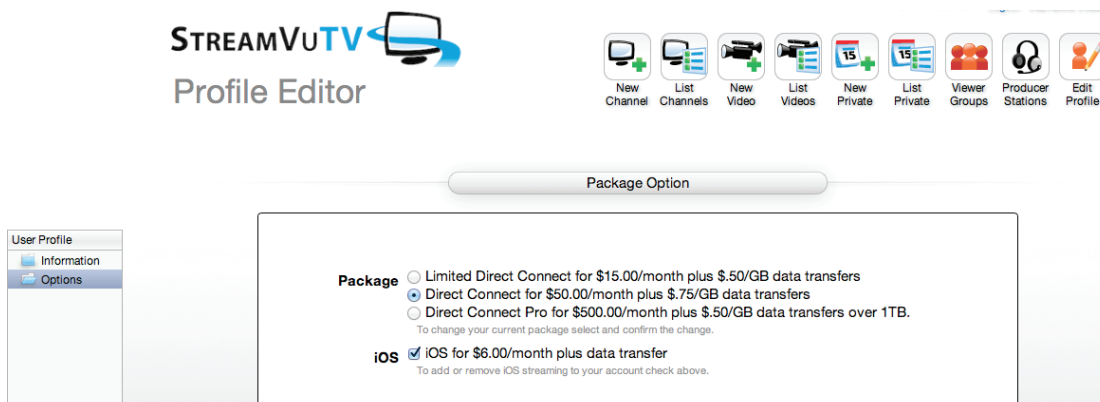
⇒ The Limited Direct Connect Link, shown to the right, can be copied and Emailed to your viewer. This will allow the viewer to watch your broadcast as a full page when pasted into any browser.



4. Establish your Producers Account



➤ Limited Direct Connect iFrame code is a special HTML (HyperText Markup Language) program that can be copied and pasted directly into your web page. The size and position of the inserted video frame can be adjusted to your liking. Like the Launchpad option, the viewer can view the broadcast as a small frame as it appears on your web page or the can choose to watch the broadcast in a format to fill the screen.



➤ In the Options Folder of your Profile there is an option to add iOS. This is a special function that transparently detects Apple iPad®, iPhone®, or iPod® devices if they are used to view your program. These devices require extra processing when the program is broadcast. Accordingly, there is a **small addition charge for this service.**



5. Help

Who to call when you need help.

- For help with your StreamVu account:

StreamVu Tv

888-650-1838 / Monday through Friday 8:00AM to 7:00PM EST.
15 Minute Callback. After normal hours callback within one hour.

- For help with the PS-102 Hardware:

Marshall Electronics

800-800-6608 / Monday through Friday 9:00AM to 6:00PM PT

Marshall Electronics Inc.

1910 East Maple Ave.

El Segundo, CA 90245

Tel: (800) 800-6608 / (310) 333-0606 • Fax: 310-333-0688

www.LCDRacks.com • sales@lcdracks.com

Features, specifications, pricing and dimensions are subject to change without notice. Physical appearance of products may vary slightly from images shown in this catalog. Please visit LCDRACKS.COM for updates and information.