

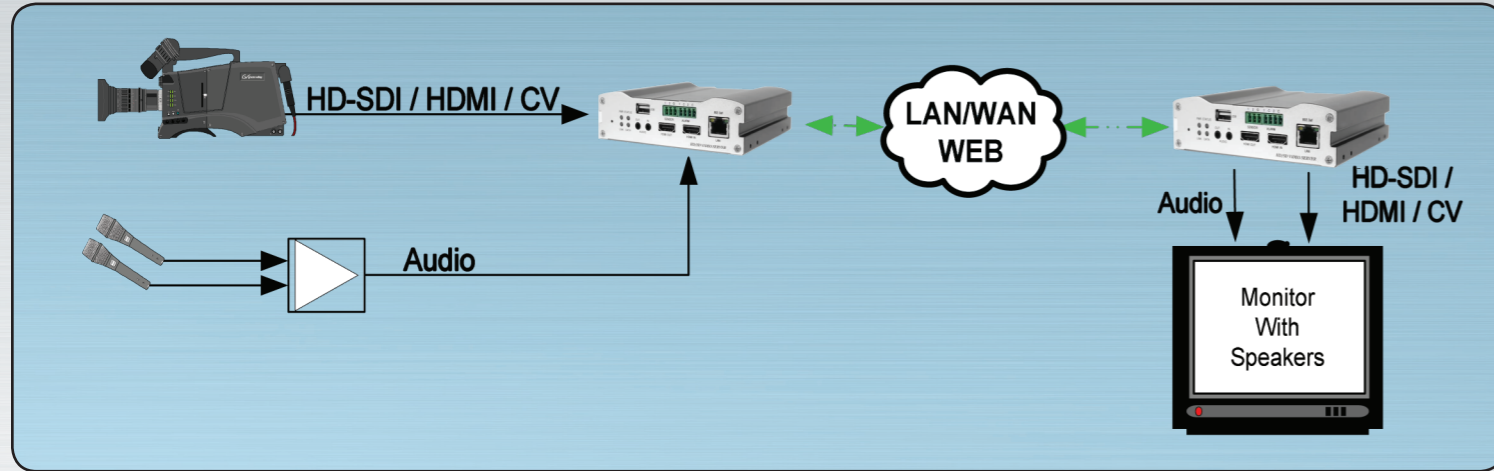
# Marshall Electronics

## IP CAMERAS AND SERVERS

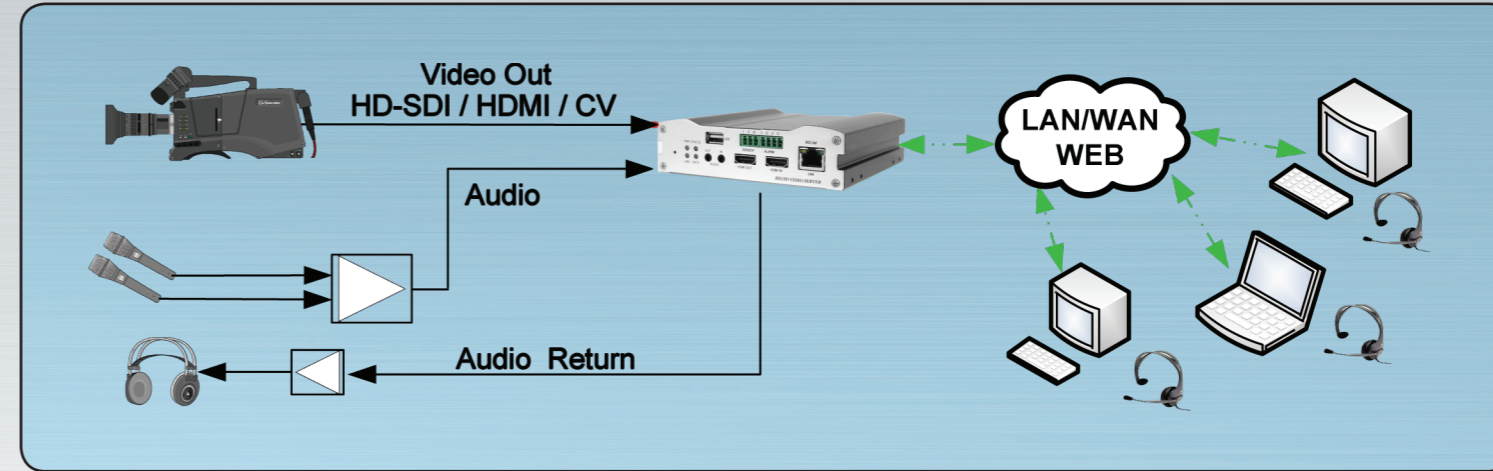


HIGH DEFINITION IP CAMERAS FOR BROADCAST, HIGH TECH SURVEILLANCE,  
AND INDUSTRIAL & MEDICAL APPLICATIONS

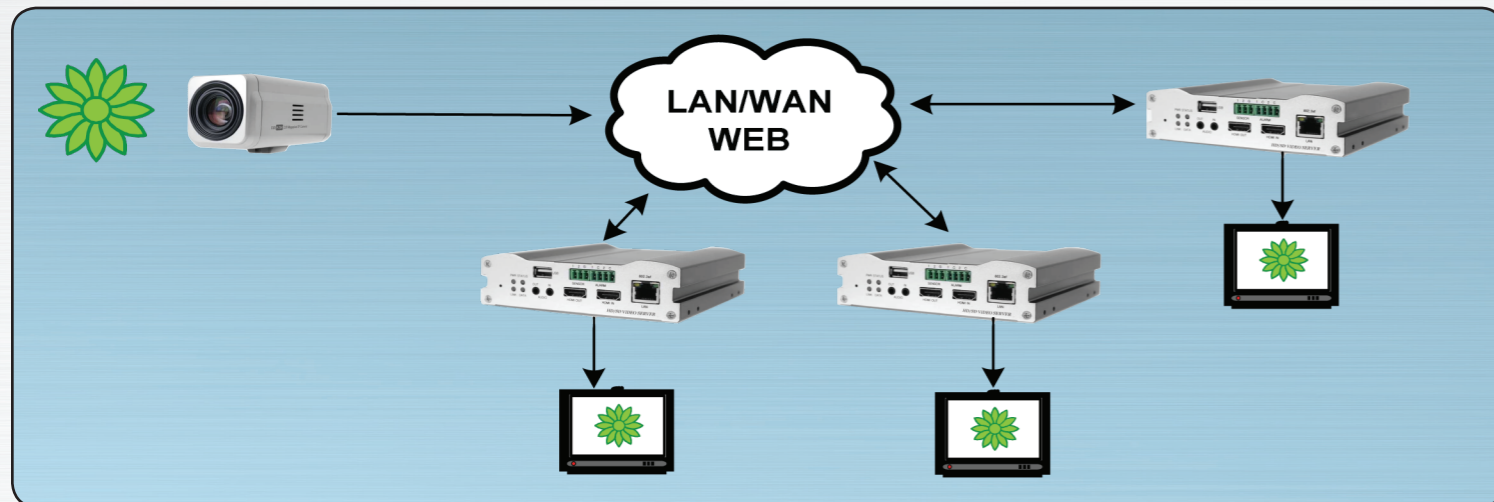
[www.mars-cam.com](http://www.mars-cam.com)



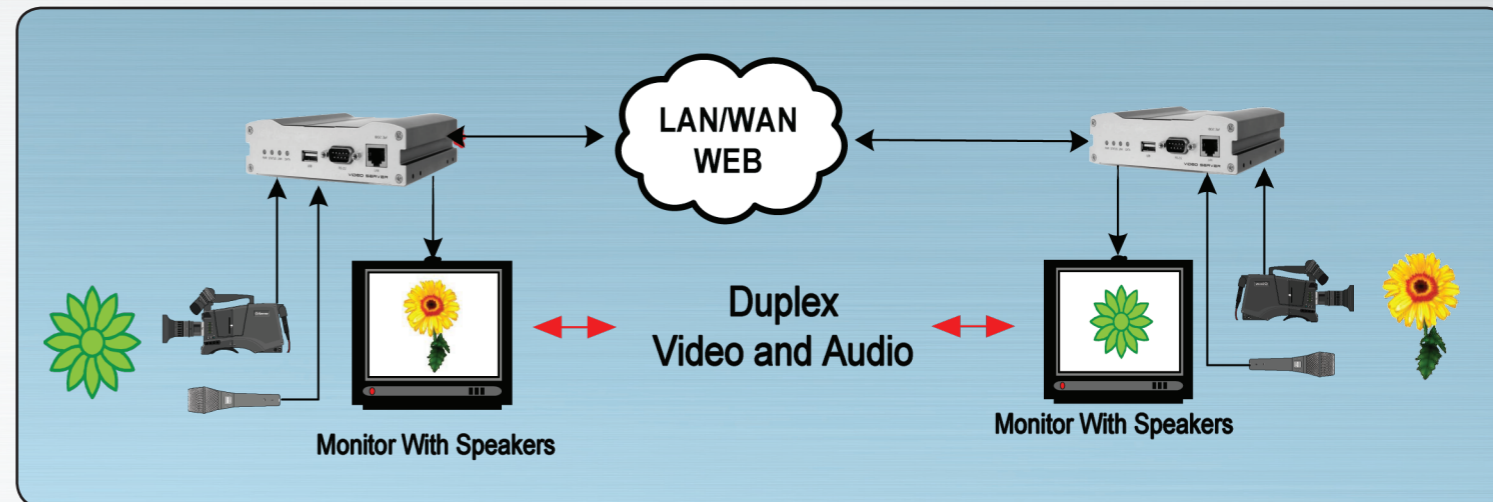
**Application 1**  
Single camera with stereo audio point-to-point Encoder (source) to Decoder (monitoring) over LAN/WAN or WEB.



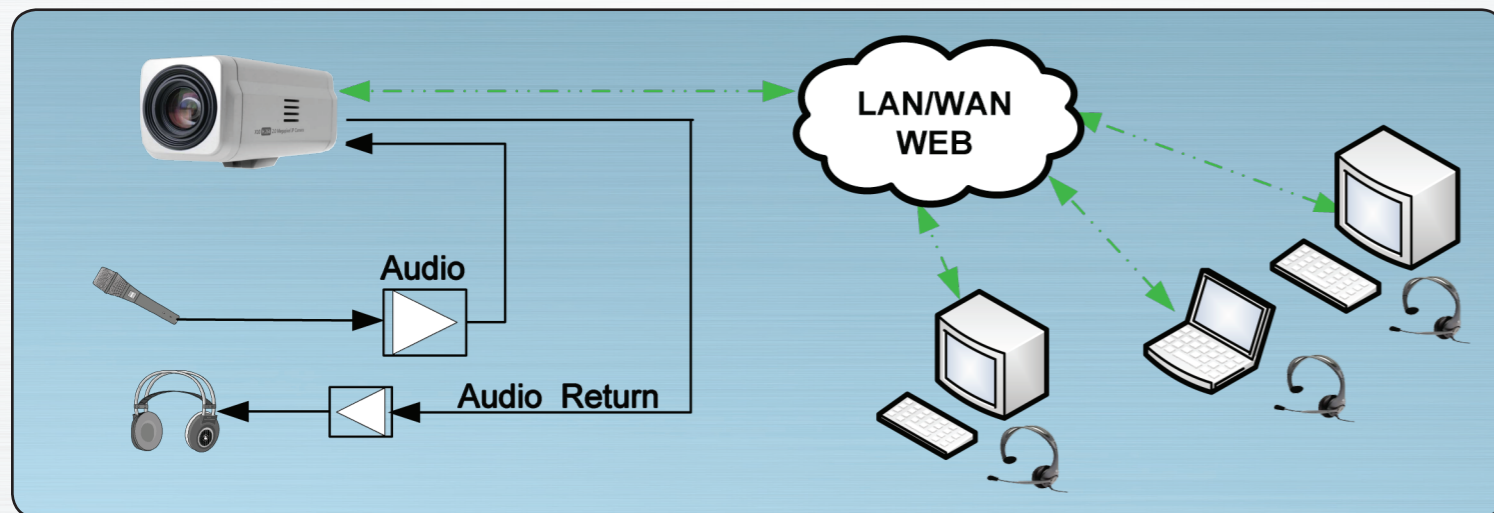
**Application 4**  
Single camera with stereo audio from Encoder to multiple computers or monitors with audio talkback over LAN/WAN or WEB.



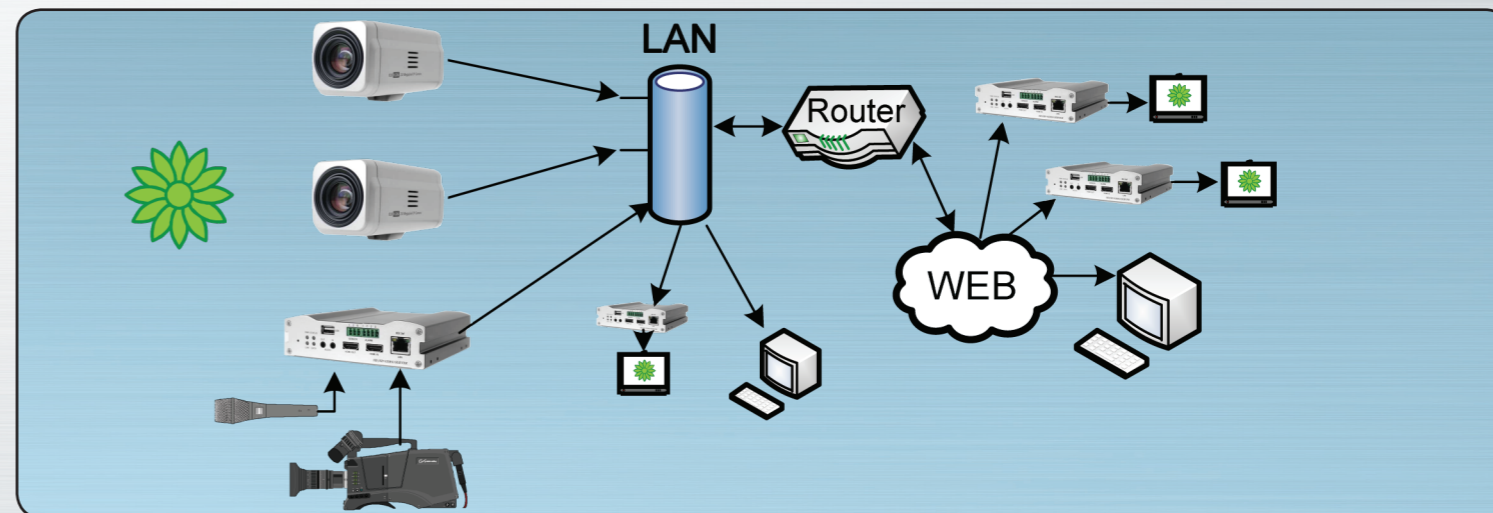
**Application 2**  
Single IP camera with built-in Encoder to multiple Decoders over LAN/WAN or WEB.



**Application 5**  
Single camera with audio connected to a VS-100 in Duplex mode to another VS-100 set to Duplex mode. Sends return video with audio which creates a two-way communications system.



**Application 3**  
Single IP camera with built-in Encoder and Mono Audio to multiple Decoders or computers over LAN/WAN or WEB. This is also the basic configuration for Multicasting.



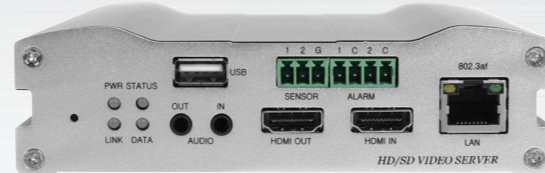
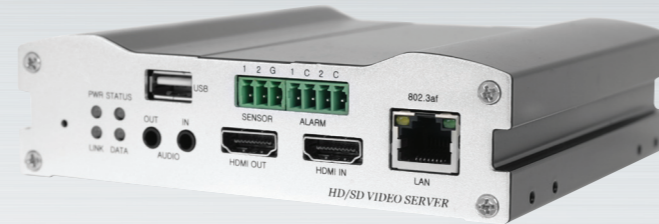
**Application 6**  
Multiple IP cameras and Servers interconnected on a private LAN along with several monitors and computers ported to the WEB. Any individual IP camera or server may be monitored or controlled remotely from multiple locations.

HD Encoder / Decoder

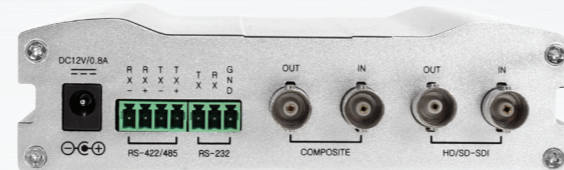
Price: \$999 / \$1,999

## VS-102-HDMI/VS-102-HDSDI

- High Quality AV Encoder / Decoder (Selectable)
- Full HD resolution 1080p Encoding / Decoding
- Up to 30fps @ 1920 x 1080 streaming
- H.264/H.264 & H.264/MJPEG Dual Streaming
- Two-Way Audio Communication
- Mono Codec G.711 for Security applications
- Stereo Codec AAC for Broadcast applications
- HD-SDI Video Input / Output (VS-102-HDSDI only)
- HDMI Video Input / Output
- Composite Video Input / Output
- Audio Input / Output
- Instant Recording to an optional USB drive (USB 2.0)
- Supports DDNS (Dynamic Domain Name Server)
- Built-in PoE (Power Over Ethernet :802af)
- RS-232 control built-in
- RS-422/485 control built-in
- 2 Sensor inputs
- 2 Alarm outputs
- Watchdog for system recovery
- Integrated Video Motion Detection
- Transmission of Video Data through FTP server
- Wide Range of Video Bit Rate Control (32kbps ~ 8Mbps)
- PSIA and ONVIF compliant



Front



Back

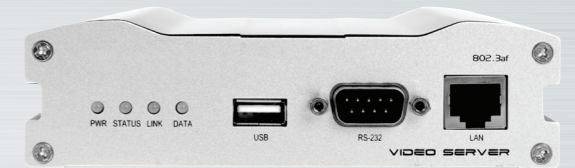


H.264 Encoder / Decoder / Duplex

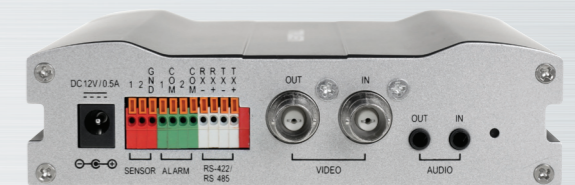
Price: \$349

## VS-100

- AV Encoder / Decoder
- D1 (720x486 / 720x576) resolution Encoding / Decoding
- Up to 30fps / 25 fps @ Full D1 Streaming
- H.264 Compression Algorithm
- Encoder / Decoder / Duplex (two-way Video and Audio) Selectable
- Composite Video Input / Output
- Audio Input / Output
- Two-Way Audio Communication (G.711)
- Instant Recording to an optional USB drive (USB 2.0)
- Supports DDNS (Dynamic Domain Name Server)
- Built-in PoE (Power Over Ethernet :802af)
- RS-232 control built-in
- RS-422/485 control built-in
- 2 Sensor inputs
- 2 Alarm outputs
- Integrated Video Motion Detection
- Transmission of Video Data through FTP server
- PSIA and ONVIF compliant



Front



Back



### SPECIFICATIONS

Section	Specifications	
System	System Mode	Encoder, Decoder
Network	Network Interface	Ethernet 10 / 100Base-T (RJ-45)
	Network Protocol	TCP/IP, UDP, Multicast, DHCP, SMTP, HTTP, SNMP, RTP, RTSP
Video	Standards	Main Stream: H.264 Secondary Stream : H.264/MJPEG
	Data Rate	32Kbps ~ 8Mbps
	Resolution	1920x1080/60i ~ 352x240/30fps, 18 resolution step
	Frame Rate Range	1 ~ 30fps
	Input 1	1 x HDMI type-A, HDMI RX
	Input 2	1 x BNC: Composite (Default) or HD-SDI (Option)
	Output 1	1 x HDMI type-A, HDMI TX
Output 2	1 x BNC: Composite (Default) or HD-SDI (Option)	
Motion Detection	Sensitivity Adjustment	
Audio	Standards	G.711, AAC
	Sample Rate	G.711: 8KHz / AAC: 32KHz
	Data Rate	G.711: 64Kbps, AAC: 64Kbps, 128Kbps, 196Kbps
	Input	1 x Line-In (Mini-Stereo)

Section	Specifications	
Audio	Output	1 x Line-Out (Mini-Stereo)
Serial	Port 1	1 x RS-232 (Terminal Block)
	Port 2	1 x RS-422/485 (Terminal Block)
	Data Rate	2,400bps ~ 115,200bps
Sensor/Alarm/etc.	Sensor Input	2 x NO Contact (Terminal Block)
	Alarm Output	2 x NO Contact (Terminal Block)
	Beep	1 x Buzzer 88dB Min
	Reset Button	1 x Factory Reset Button
User Interface	System Status	4 x LED
Storage	Recording/Backup	1 x USB 2.0 Port
Software	True CMS/NVR	Live Monitoring, Recording, Search & Playback, Backup
Physical	Dimensions	134(W) X 125(D) X 35(H)mm
	Weight	504g
	Power Source	DC 12V/0.8A, PoE(Power over Ethernet): 802.3af
	Power Consumption	Max 9.6W
	Operating Temp.	-10°C ~ 50°C / 14°F ~ 122°F

### SPECIFICATIONS

Section	Specifications		
System	System Mode	Encoder, Decoder, Duplex	
Network	Network Interface	Ethernet 10 / 100Base-T (RJ-45)	
	Network Protocol	TCP/IP, UDP, Multicast, DHCP, SMTP, HTTP, SNMP, RTP, RTSP	
Video	Standards	H.264 compression algorithm	
	Data Rate	32kbps ~ 4Mbps	
	Resolution	NTSC	720x480, 720x240, 352x480, 352x240
		PAL	720x576, 720x288, 352x576, 352x288
	Max Frame Rate	NTSC : Max 30fps / PAL : Max 25fps	
	Frame Rate Range	NTSC : 0.2 ~ 30fps / PAL : 0.2 ~ 25fps	
	Input	1 Composite (1 Vpp 75 Ohm, BNC)	
Output	1 Composite (1 Vpp 75 Ohm, BNC)		
Motion Detection	Sensitivity Adjustment		
Audio	Standards	G.711	
	Sample Rate	8KHz	
	Data Rate	64kbps	
	Input	1 x Line-In (Mini-stereo, Single Mono)	

Section	Specifications	
Audio	Output	1 x Line-Out (Mini-stereo, Single Mono)
Serial	Port 1	1 x RS-232 (D-Sub 9Pin)
	Port 2	1 x RS-422/485 (Terminal Block)
	Data Rate	2,400bps ~ 115,200bps
Sensor/Alarm/etc.	Sensor Input	2 x NO Contact (Terminal Block)
	Alarm Output	2 x NO Contact (Terminal Block)
	Beep	1 x Buzzer 88dB Min
	Reset Button	1 x Factory Reset Button
User Interface	System Status	4 x LED
Storage	Recording/Backup	1 x USB 2.0 Port
Software	True CMS/NVR	Live Monitoring, Recording, Search & Playback, Backup
Physical	Dimensions	134(W) X 125(D) X 35(H)mm
	Weight	464g
	Power Source	DC 12V/0.5A, PoE(Power over Ethernet): 802.3af
	Power Consumption	Max 6W
	Operating Temp.	-10°C ~ 50°C / 14°F ~ 122°F

2.0MP 10X Zoom IP PTZ Camera

## VS-570/VS-570-HDSDI

- 2 MP 1/2.5" 1920 x 1080 CMOS Sensor
- Full HD resolution 1080p30 / 1080i60 Video and Audio Encoding
- 10x Optical Zoom Lens Built-in (F1.8 ~ F2.1, f=5.1mm ~ 51mm)
- 120x Zoom (10x Optical Zoom, 12x Digital Zoom)
- Up to 30fps @ 1920 x 1080 live streaming
- H.264/H.264 & H.264/MJPEG Dual Streaming
- Simultaneous HD-SDI Video Output (VS-570-HDSDI)
- Two-Way Audio Communication (G.711/AAC)
- True Day & Night (Motorized IR Cut Filter)
- BLC (Back Light Compensation)
- Vandal-Proof, IP67-Rated Dome
- Fast & Smooth Pan Motion with 360° Continuous Rotation
- 128 Presets, 8 Swings, 4 Patterns, 8 Groups
- RS-485 Communication, Pelco D or Pelco P Protocol
- Integrated Video Motion Detection
- 2 Motion Sensor Inputs & 2 Alarm Outputs
- Various Protocols : TCP/IP, Multicast, UDP, HTTP, SMTP, FTP, DHCP, DNS, Dynamic DNS, RTP, RTSP, SNMP
- PSIA and ONVIF compliant
- SDK & API Available

Price: \$2,999 / \$4,299



\* Shown with optional mounting bracket

2MP 10x PTZ DOME Vandal Proof IP67

SPECIFICATIONS

Section	Specifications
Network	Network Interface: Ethernet 10/100Base-T (RJ-45)
	Network Protocol: TCP/IP, UDP, Multicast, DHCP, SMTP, HTTP, SNMP, RTP, RTSP
Camera	Image Sensor: 2.0M 1/2.5" CMOS Image Sensor
	Focal Length: F1.8 ~ F2.1, f=5.1mm~51mm
	Zoom: x10 Optical Zoom
	Focus Position: ∞ ~ 1cm
	Angle of View: Horizontal : 50(Wide) ~ 5.4(Tele)
	Min. Illuminance: 1.0 Lux (B/W), F1.8 with 50 IRE
	S/N Ratio: 50 dB or more
	AE Mode: Auto, Manual, Bright, Shutter Priority, Iris Priority, Spot
	IRIS Control: Auto / Manual (F1.8 ~ F26, Close)
	Gain Control: Auto / Manual (-3 ~ 18dB)
Pan/Tilt	Shutter Control: Auto / Manual (1/2 ~ 1/10,000 sec)
	White Balance: Auto / Manual (Red, Blue Gain Adjustable)
	DSS Limit: 1/60 ~ 1/2 or 1/50 ~ 1/2
	Day & Night: Auto / Day / Night (ICR)
	BLC: Auto / Manual
	WDR: On / Off
	Aperture Control: 16 steps
	Range: Pan : 360°(Endless)/ Tilt: 90° Preset : 360°/sec
	Pan/Tilt Speed: Manual : 0.05° ~ 360°/sec (Zoom Proportional) Swing : 1.4°~180°/sec
	Other Functions: 128 Presets, 4 Patterns (Approx. 5 Minutes for Each Pattern), 8 Swings, 8 Groups (MAX. 20 Entries for Each Group), Auto Flip, Auto Parking, Power-up Action & etc.

2.0MP 20X Zoom IP Speed Dome

## VS-571/VS-571-HDSDI

- 2 MP 1/2.5" 1920 x 1080 CMOS Sensor
- Full HD resolution 1080p30 / 1080i60 Video and Audio Encoding
- 20x Optical Zoom Lens Built-in (F1.8 ~ F2.1, f=5.1mm ~ 51mm)
- 240x Zoom (20x Optical Zoom, 12x Digital Zoom)
- Up to 30fps @ 1920 x 1080 live streaming
- H.264/H.264 & H.264/MJPEG Dual Streaming
- Simultaneous HD-SDI Video Output (VS-571-HDSDI)
- Two-Way Audio Communication (G.711/AAC)
- True Day & Night (Motorized IR Cut Filter)
- BLC (Back Light Compensation)
- Vandal-Proof, IP67-Rated Dome
- Fast & Smooth Pan Motion with 360° Continuous Rotation
- 128 Presets, 8 Swings, 4 Patterns, 8 Groups
- RS-485 Communication, Pelco D or Pelco P Protocol
- Integrated Video Motion Detection
- 2 Motion Sensor Inputs & 2 Alarm Outputs
- Various Protocols : TCP/IP, Multicast, UDP, HTTP, SMTP, FTP, DHCP, DNS, Dynamic DNS, RTP, RTSP, SNMP
- PSIA and ONVIF compliant
- SDK & API Available

Price: \$3,799 / \$5,599



\* Shown with optional mounting bracket

2MP 20x PTZ DOME Vandal Proof IP67

SPECIFICATIONS

Section	Specifications
Camera	Image Sensor: 1/3" CMOS Image Sensor
	Min Illumination: 0.5 Lux (Color) / 0.02 Lux (B/W), F1.6, 50 IRE, 1/4s, 28dB
Image Enhancement	Gain Control: Auto / Manual (0 ~ 30dB)
	White Balance: Auto / Manual (Red, Blue Gain Adjustable)
	True Day & Night (TDN): 0
	Backlight Compensation: WDR, BLC
Lens	On Screen Display: English
	Motion Detection: 0
	Privacy Masking: 4 x Zones
Video	Lens Mount: C/CS Mount
	Digital Zoom: x20 Optical Zoom
	Focal Length: F1.6 ~ F2.8, f=4.7mm~84.6mm
	Angle of View: Horizontal : 55.2(Wide) ~ 3.2(Tele)
Audio	Digital Shutter Speed (DSS): 1/4~1/10,000 sec
	Video Compression: H.264 MP Level 4
Physical	Bitrate: 32Kbps ~ 8Mbps
	Resolutions: 1920 x 1080
Audio	Video Streaming: Primary : H.264, Secondary : H.264, MJPEG
	Video Output: Composite / HD-SDI
Audio	Backup: SD Card, FTP
	Audio Compression: G.711 , AAC-LC
Audio	Audio Sampling Rate: G.711 : 8KHz, AAC: 32KHz
	Audio Input/Output: 1 x Line-In (Mono), 1 x Line-Out (Mono)

Section	Specifications
PTZ Control	Panning Range: 360°
	Tilting Range: 90°
	Preset: 360°/Sec
	Manual: 0.05° ~ 360°/Sec (Zoom Proportional)
Network	Swing: 1.4°~180°/Sec
	Preset Positions: 111
	Pattern: 4 (Approx. 5 Minutes for Each Pattern)
	Swing Group: 8 (Max. 20 Entries for Each Group)
Integration Interface	PTZ Protocol: Pelco-D, Pelco-P
	Auto Parking: 0
	Network Interface: Ethernet 10/100Base-T (RJ-45)
	Network Protocol: TCP/IP, UDP, Multicast, DHCP, SMTP, HTTP, SNMP, RTP, RTSP
Physical	API (Application Programming Interface): TSDK, PSIA, OnVIF
	Serial Connectors: 1 x RS-485
	Sensor Input: 2 x Photo-Coupler Input
	Alarm Input: 2 x Relay Output (Normal Open)
Physical	Ingress Protection Rating: IP 67
	Power Supply: DC 12V/3A
	Power Consumption: Max 36W
	Operating Temperature: -40°C ~ 50°C / -40°F ~ 122°F
Physical	Dimensions: Dome : Ø150mm / Ø5.9"
	Weight: Wall : Approx. 3.8Kg/ 8.4 lbs / Ceiling : Apporx. 3.2Kg/ 7.0 lbs

## 1.3MP 18X Zoom IP Speed Dome

# VS-572/VS-572-HDSDI

- 1.3 MP 1/3" 1280 x 960 progressive scan CCD
- HD resolution 720p30 Video and Audio Encoding
- 18x Optical Zoom Lens Built-in (F1.6 ~ F2.8, f=4.7mm ~ 84.6mm)
- Up to 1280 x 720 @ 30fps (1280x960 @ 20fps)
- H.264/H.264 & H.264/MJPEG Dual Streaming
- Simultaneous HD-SDI Video Output (VS-572-HDSDI)
- Two-Way Audio Communication (G.711/AAC)
- True Day & Night (Motorized IR Cut Filter)
- WDR (Wide Dynamic Range)
- Vandal-Proof, IP67-Rated Dome
- Fast & Smooth Pan Motion with 360° Continuous Rotation
- 98 Presets, 8 Swings, 4 Patterns, 8 Groups
- RS-485 Communication, Pelco D or Pelco P Protocol
- Integrated Video Motion Detection
- 2 Motion Sensor Inputs & 2 Alarm Outputs
- Various Protocols : TCP/IP, Multicast, UDP, HTTP, SMTP, FTP, DHCP, DNS, Dynamic DNS, RTP, RTSP, SNMP
- PSIA and ONVIF compliant
- SDK & API Available

Price: \$2,999 / \$4,299



\* Shown with optional mounting bracket

## D1 10X IP Speed Dome

# VS-370x10

- 1/4" Interline transfer CCD (811 x 508)
- D1 Video resolution
- 10x Optical Zoom (F1.8, f=3.8-38mm)
- 100x Zoom Control (Optical 10x, Digital 10x)
- H.264/H.264 & H.264/MPEG Dual Streaming
- Two-Way Audio Communication (G.711/AAC)
- True Day & Night (Motorized IR Cut Filter)
- WDR (Wide Dynamic Range)
- Vandal-Proof, IP66-Rated Dome
- Built-in fan/heater
- Fast & Smooth Pan Motion with 360° Continuous Rotation
- Low noise & low vibration
- Lightning speed (Max 60°/sec) & smooth manual speed (Min.0.05°/sec)
- 128 Presets, 8 Swings, 4 Patterns, 8 Groups
- RS-485 Communication, Pelco D or Pelco P Protocol
- Integrated Video Motion Detection
- Motion Sensor Input & Alarm Output
- Various Protocols : TCP/IP, Multicast, UDP, HTTP, SMTP, FTP, DHCP, DNS, Dynamic DNS, RTP, RTSP, SNMP

Price: \$1,129



\* Shown with optional mounting brackets

- PSIA and ONVIF compliant
- SDK & API Available

1.3MP 18x PTZ DOME Vandal Proof IP67

D1 10x PTZ DOME Vandal Proof IP66

### SPECIFICATIONS

Section	Specifications
Network	Network Interface: Ethernet 10/100Base-T (RJ-45)
	Network Protocol: TCP/IP, UDP, Multicast, DHCP, SMTP, HTTP, SNMP, RTP, RTSP
Camera	Image Sensor: 1/3" Solid State Progressive CCD Scan
	Focal Length: F1.6 ~ F2.8, f=4.7mm~84.6mm
	Zoom: x18 Optical Zoom
	Focus Length: ∞ ~ 1.0m(tele) ~ 0.01m(wide)
	Angle of View: Horizontal : 55.2(Wide) ~ 3.2(Tele)
	Min. Illuminance: 0.5 Lux (Color) / 0.02 Lux (B/W), F1.6, 50 IRE, 1/4s, 28dB
	AE Mode: AE / AER / AE+ / AER+ / Shutter / Exposure / AGC
	IRIS Control: Auto / Manual (F1.6 ~ F34)
	Gain Control: Auto / Manual (0 ~ 30dB)
	Shutter Control: Auto / Manual (1/4 ~ 1/10,000 sec)
	White Balance: Auto / Manual (Red, Blue Gain Adjustable)
	DSS Limit: x2 / x4 / x8 Fields
	Day & Night (ICR): Auto / Manual (ICR)
	BLC: Auto / Manual, 256 Levels
WDR: On / Off	
Privacy Mask: 4 Masks	
Pan/Tilt	Range: Pan : 360°(Endless)/ Tilt: 90° Preset : 360°/sec
	Pan/Tilt Speed: Manual : 0.05° ~ 360°/sec (Zoom Proportional) Swing : 1.4°~180° /sec
	Preset: 98Presets
	Pattern: 4 Patterns (Approx. 5 Minutes for Each Pattern)
Other Functions	Swing: 8 Swings
	Group: 8Groups (MAX. 20 Entries for Each Group)
	Auto Flip, Freeze on Preset, Auto Parking, Power-up Action & etc.

Section	Specifications
Video	Standards: Main Stream: H.264 Secondary Stream: H.264/MJPEG
	Output: 1 x Composite (BNC type) or 1 x HD-SDI (BNC type) (Choose one option)
	Resolution: 1280x960 ~ 352x240, 13 resolution steps
	Max Frame Rate: H.264/MJPEG: 20fps @ 1280x960, 30fps @ 1280x720 ~ 352x240
Audio	Bitrate: 32Kbps ~ 8Mbps
	Algorithm: G.711/AAC
	Input: 1 x Line-In (Mini-stereo, Single Mono)
	Output: 1 x Line-Out (Mini-stereo, Single Mono)
Serial Port	Sample Rate: G.711: 8KHz, AAC: 32KHz
	Bitrate: G.711: 64Kbps, AAC: 64Kbps, 128Kbps, 196Kbps
Sensor/Alarm/etc.	Port: RS-485 for PTZ control
	Protocol: Pelco-D, Pelco-P
Software	Sensor Input: 2 x Photo-Coupler Input
	Alarm Output: 2 x Relay Output (Normal Open)
Physical	Reset Button: Factory Reset Button
	True NVR/CMS: Live Monitoring, Recording, Search & Playback, Backup
	Mount Bracket: Wall Mount or Ceiling Mount (Option) Dome : Ø150mm / Ø5.9"
	Dimensions: Housing : 185(Ø) x 193.5(H)mm / 7.3"(Ø) x 7.6"(H) Approx. 3.8Kg/ 8.4 lbs (Wall) Approx. 3.2Kg/ 7.0 lbs (Ceiling)
Other Functions	Weight: Dome : Polycarbonate / Housing : Aluminum
	Power Source: DC 12V/3A
	Power Consumption: Max 36W
	Waterproof: IP 67
	Fan: Always ON
	Operating Temp.: -30°C ~ 60°C / -34°F ~ 140°F

### SPECIFICATIONS

Section	Specifications
Signal Format	NTSC
	PAL
Camera	Image Device: 1/4" Interline Transfer CCD
	Total Pixel: 410K Pixels [811(H) x 508(V)]
	Effective Pixel: 380K Pixels [768(H) x 494(V)]
	H. Resolution: 500 TV Lines(Color), 570 TV Lines(B/W)
	S/N Ratio: 50dB (AGC Off)
	Zoom: X10 Optical Zoom and X10 Digital Zoom
	Focal Length: F1.8, f=3.8 ~ 38mm
	Min. Illuminance: 0.7 Lux (Color) / 0.02 Lux (B/W) @ 50 IRE
	Day & Night: Auto / Day / Night (IR Cut Filter)
	Focus: Auto / Manual / Semi-Auto
	Iris: Auto / Manual
	Shutter Speed: x128 ~ 1/120000 sec
	AGC: Normal / High / Off
	White Balance: Auto / Manual (Red & Blue Gain Adjustable)
Video	BLC: Low / Middle / High / Off
	Flickerless: Selectable
	SSNR: Low / Middle / High / Off
	Other Functions: Frame Freeze Function, System Image Flip by Installation Type
Standards	H.264 Compression algorithm (VS-270-X10)
	Primary: H.264, Secondary: H.264/MJPEG (VS-370-X10)
	Data Rate: 32kbps ~ 4Mbps
Resolution	NTSC : 720x480, 720x240, 352x480, 352x240
	PAL : 720x576, 720x288, 352x576, 352x288

Section	Specifications
Video	Max Frame Rate: NTSC : Max 30fps / PAL : Max 25fps
	Frame Rate Range: NTSC : 0.2 ~ 30fps / PAL : 0.2 ~ 25fps
Network	Network Interface: Ethernet 10/100Base-T (RJ-45)
	Network Protocol: TCP/IP, UDP, Multicast, DHCP, SMTP, HTTP, SNMP, RTP, RTSP
Pan/Tilt	Range: Pan : 360°(Endless) Tilt : 180°(Auto-Flip On) , 95°(Auto-Flip Off) Preset : 360°/sec
	Pan/Tilt Speed: Manual : 0.05° ~ 360°/sec (Zoom Proportional) Swing : 1°~ 180°/sec
	Preset: 128 x Presets with Labels / Independent Preset Characteristic Setup
	Pattern: 4 x Patterns (Approx. 5 Minutes for Each Pattern)
Other Functions	Swing: 8 x Swings
	Group: 8 x Groups (MAX. 20 Entries for Each Group)
	Image Auto Flip, Auto Parking, Power-up Action & etc..
Software	True CMS/NVR: Live Monitoring, Recording, Search & Playback, Backup
	Communication: 1 x RS-485
Physical	Protocol: Pelco-D, Pelco-P Selectable
	Privacy Zone: 4 x Zones
	OSD: English On / Off
	Power: DC Type : DC 12V / 2.5 A Dome : ø 115 mm / 4.5"
	Dimensions: Housing : 168(ø) x 160.5(H) mm / 6.6" (ø) x 6.3" (H)
	Weight: Approx. 2.2 Kg / 4.8 lbs
Operating Temp.: 0°C ~ 40°C / 32°F ~ 104°F	

## D1 27X/37X IP Speed Dome VS-370-X27/X37

Price: \$1,679 / \$2,099

- 1/4" Sony Ex-View CCD (768 x 494)
- D1 Video resolution
- 27x Optical Zoom (F1.6-2.6, f=3.5-94.5mm) (VS-330-X27)
- 324x Zoom Control (Optical 27x, Digital 12x) (VS-330-X27)
- 37x Optical Zoom (F1.6-3.9, f=3.5-129.5mm) (VS-330-X37)
- 444x Zoom Control (Optical 237x, Digital 12x) (VS-330-X37)
- H.264/H.264 & H.264/MPEG Dual Streaming
- Two-Way Audio Communication (G.711/AAC)
- True Day & Night (Motorized IR Cut Filter)
- WDR (Wide Dynamic Range)
- Vandal-Proof, IP66-Rated Dome
- Built-in fan/heater
- Fast & Smooth Pan Motion with 360° Continuous Rotation
- Low noise & low vibration
- Lightning speed (Max 60°/sec) & smooth manual speed (Min.0.05°/sec)
- 128 Presets, 8 Swings, 4 Patterns, 8 Groups
- RS-485 Communication, Pelco D or Pelco P Protocol
- Integrated Video Motion Detection
- Motion Sensor Input & Alarm Output



\* Shown with optional mounting brackets

- Various Protocols : TCP/IP, Multicast, UDP, HTTP, SMTP, FTP, DHCP, DNS, Dynamic DNS, RTP, RTSP, SNMP
- PSIA and ONVIF compliant
- SDK & API Available

D1

27x

37x

PTZ

DOME

Vandal Proof



IP66

### SPECIFICATIONS

Section	Specifications	
Signal Format	NTSC	PAL
Camera	Image Device	VS-370-X27/X37: 1/4" Sony Super HAD Color CCD VS-370-X27/X37: 1/4" Sony Double Density Interline Transfer CCD
	Effective Pixel	380K Pixels [768(H) x 494(V)]    440K Pixels [752(H) x 582(V)]
	H. Resolution	500 TV Lines    680 TV Lines
	S/N Ratio	50dB (AGC Off)
	Zoom	VS-370-X27: X27 Optical Zoom and X12 Digital Zoom VS-370-X37: X37 Optical Zoom and X12 Digital Zoom
	Focal Length	VS-370-X27: F1.6~2.9, f=3.5 ~94.5mm VS-370-X37: F1.6~2.9, f=3.5 ~129.5mm
	MIN. Illuminance	VS-370-X27: 0.4 Lux (Color) / 0.02 Lux (B/W) @ 50 IRE VS-370-X37: 0.7 Lux (Color) / 0.06 Lux (B/W) @ 50 IRE
	Day & Night	Auto / Day / Night (IR Cut Filter)
	Focus	Auto / Manual / Semi-Auto
	Iris	Auto / Manual
	White Balance	Auto / Manual (Red & Blue Gain Adjustable)
	BLC	BLC / HLC / Off
	Flickerless	Selectable
	Video	Standards
Data Rate		32kbps ~ 4Mbps

Section	Specifications	
Video	Resolution	NTSC : 720x480, 720x240, 352x480, 352x240 PAL : 720x576, 720x288, 352x576, 352x288
	Max Frame Rate	NTSC : Max 30fps / PAL : Max 25fps
	Frame Rate Range	NTSC : 0.2 ~ 30fps / PAL : 0.2 ~ 25fps
Network	Network Interface	Ethernet 10/100Base-T (RJ-45)
	Network Protocol	TCP/IP, UDP, Multicast, DHCP, SMTP, HTTP, SNMP, RTP, RTSP
Pan/Tilt	Range	Pan : 360°(Endless) / Tilt: 95° Preset : 360°/ sec
	Pan/Tilt Speed	Manual : 0.05°~ 360°/ sec (Zoom Proportional) Swing : 1°~ 180°/ sec
	Preset	128 x Presets with Labels / Independent Preset Characteristic Setup
	Pattern	4 x Patterns (Approx. 5 Minutes for Each Pattern)
	Swing	8 x Swings
	Group	8 x Groups (MAX. 20 Entries for Each Group)
Software	Other Functions	Auto Flip, Auto Parking, Power-up Action & etc..
	True CMS/NVR	Live Monitoring, Recording, Search & Playback, Backup
	Communication Protocol	1 x RS-485 Pelco-D, Pelco-P Selectable
	Privacy Zone	8 x Zones
Physical	OSD	English On / Off
	Power	DC 12V / 2.5A
	Dimensions	Dome : ø 149 mm / 5.9" Housing : 206(ø) x 235(H) mm / 8.1" (ø) x 9.2" (H)
	Weight	Approx. 5 Kg / 11 lbs
	Operating Temp.	-30°C ~ 50°C / -22°F ~ 122°F

## 1.3MP IP Vandal Proof Dome VS-551/VS-551IR

Price: \$799 / \$849

- 1/3" Sony 1280 x 960 progressive CCD image sensor
- 1.3 MP streaming up to 1280 x 960 @ 22.5fps
- H.264/H.264 & H.264/MJPEG dual streaming
- Megapixel Varifocal Auto Iris lens (F1.2, f=3.6~16mm)
- 24 IR LEDs built-in (VS-551IR)
- True Day & Night (Motorized IR Cut Filter) (VS-551IR)
- Vandal-Proof dome
- Composite video output for angle / focus adjustments
- Integrated Video Motion Detection
- Motion Sensor Input & Alarm Output
- RS-485 Communication, Pelco D or Pelco P Protocol
- Two-way audio communication (G.711/AAC)
- Built-in PoE (Power Over Ethernet :802af)
- Transmission of video data through FTP server
- Various Protocols : TCP/IP, Multicast, UDP, HTTP, SMTP, FTP, DHCP, DNS, Dynamic DNS, RTP, RTSP, SNMP
- PSIA and ONVIF compliant
- SDK & API Available



1.3MP

IR Illumination

DOME

Vandal Proof

PoE

### SPECIFICATIONS

Section	Specifications	
Network	Network Interface	Ethernet 10/100Base-T (RJ-45)
	Network Protocol	TCP/IP, UDP, Multicast, DHCP, SMTP, HTTP, SNMP, RTP, RTSP
Camera	Image Sensor	Sony 1/3", 1.3M CCD Image Sensor
	Lens	DC Auto Iris Varifocal f=3.6 ~ 16mm, F1.2, IR Cut Filter
	IR	24 IR LEDs (VS-551IR)
	AE Operation	Mechanical Iris lens selection, Slow Shutter on/off Flickerless, Backlight Function, Brightness. Max AGC Gain
	AWB Operation	Auto White balance control
	MIN. Illuminance	VS-551 : Color: 1.5Lux (Slow frame: 0.4Lux) VS-551IR: Color: 1.4Lux (Slow frame: 0.35Lux), B/W : 0Lux (IR LED ON)
Video	Motion Detection	On/Off
	Standards	Main Stream : H.264 Secondary Stream: H.264 / M-JPEG
	Output	1 x Composite (1 Vpp 75 Ohm, BNC)
	Resolution	1280x960 ~ 352x240, 13 Resolution steps
Max Frame Rate	H.264/MJPEG : 22.5fps @ 1280x960, 30fps @ 1280x720 ~ 352x240	

Section	Specifications	
Video	Frame Rate Range	5 ~ 30fps
	Bitrate	30Kbps ~ 8Mbps
Audio	Algorithm	G.711, AAC
	Sample Rate	G.711: 8KHz, AAC: 32KHz
	Bitrate	G.711: 64Kbps, AAC: 64Kbps, 128Kbps, 196Kbps
	Input	1 x Line-In (Mini-Stereo, Single Mono)
Sensor/Alarm /etc.	Output	1 x Line-Out (Mini-Stereo, Single Mono)
	Sensor Input	1 x NO Contact
Software	Alarm Output	1 x NO Contact
	Reset Button	1 x Factory Reset Button
	True NVR/CMS	Live Monitoring, Recording, Search & Playback, Backup
Physical	Dimensions	1000 for Vandal Dome, 1240 for Bottom
	Weight	VS-551 : 1012g / 2.2 lbs VS-551IR : 1050g / 2.3 lbs
	Power	DC 12V, 0.5A    PoE: 802.3af
	Power Consumption	MAX. 6W
Operation Temperature	-10°C ~ 50°C / 14°F ~ 122°F	

D1 IP Vandal Proof Dome

## VS-351/VS-351IR

- 1/3" Sony HAD 768 x 494 CCD sensor
- Full D1 resolution @ 30fps
- H.264/H.264 & H.264/MJPEG Dual Streaming
- Auto Iris Varifocal f=2.8 ~ 11mm, F1.3 (VS-351)
- Auto Iris Varifocal f=2.9 ~ 10mm, F1.3 (VS-351IR)
- 18 IR LEDs (VS-351IR)
- Built-in OSD (On Screen Display)
- Two-Way Audio Communication (G.711)
- Integrated Video Motion Detection
- Motion Sensor Input & Alarm Output
- Built-in PoE (Power Over Ethernet :802af)
- Transmission of Video Data through FTP server
- Various Protocols : TCP/IP, Multicast, UDP, HTTP, SMTP, FTP, DHCP, DNS, Dynamic DNS, RTP, RTSP, SNMP
- PSIA and ONVIF compliant
- SDK & API Available

Price: \$499 / \$599



**D1** **DOME** **Vandal Proof** **PoE**

SPECIFICATIONS

Section	Specifications
Network	Network Interface: Ethernet 10/100Base-T (RJ-45)
	Network Protocol: TCP/IP, UDP, Multicast, DHCP, SMTP, HTTP, SNMP, RTP, RTSP
Camera	Image Sensor: 1/3" Sony Super HAD CCD, 410,000 pixels
	Total Pixel: NTSC : 768(H) x 494(V) / PAL - 752(H) x 582 (V)
	Lens: Auto Iris Varifocal f=2.8 ~ 11mm, F1.3 (VS-351IR)
	Lens: Auto Iris Varifocal f= 2.9 ~ 10mm, F1.3 (VS-351IR)
	IR: 18 IR LEDs (VS-351IR)
	Max. Aperture Ratio: 1:1.5
	Back Light Compensation: On/Off/Auto
	Gain Control: AGC-L, AGC-H, OFF selectable
	White Balance: W-ATW/S-AWC/AWC/Manual
	Output: 1 x Composite (1 Vpp 75 Ohm, BNC)
Video	Electric Shutter Speed: 1/60 ~ 1/200,000 sec
	Min. Illumination: 0.002Lux (Intensifier), 0.3Lux (F1.3) B/W : 0LUX(IR LED ON)-VS-351IR
	S/N Ratio: 50dB (AGC Off)
	Motion Detection: MD1 / MD2 / OFF
	Standards: H.264 compression algorithm (VS-351IR) Primary: H.264, Secondary: H.264/MJPEG (VS-351IR)
Data Rate: 32Kbps ~ 4Mbps	

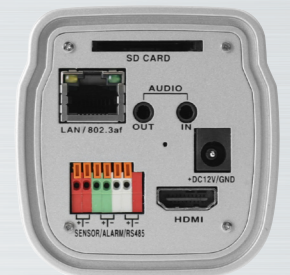
Section	Specifications
Video	Resolution: NTSC : 720x480, 720x240, 352x480, 352x240 PAL : 720x576, 720x288, 352x576, 352x288 540 TV Line
	Max Frame Rate: NTSC : Max 30fps / PAL : Max 25fps
	Frame Rate Range: NTSC : 0.2 ~ 30fps / PAL : 0.2 ~ 25fps
Audio	Standards: G.711
	Sample Rate: 8KHz
	Data Rate: 64Kbps
Serial	Input: 1 x Line-In (Mini-stereo, Single Mono)
	Output: 1 x Line-Out (Mini-stereo, Single Mono)
Sensor/Alarm/etc.	Port: 1 x RS-485
	Data Rate: 2,400bps ~ 115,200bps
Software	Sensor Input: 1 x NO Contact
	Alarm Output: 1 x NO Contact
	Reset Button: 1 x Factory Reset Button
Physical	True CMS/Web Viewer: Live Monitoring, Recording, Search & Playback, Backup
	Dimensions: Ø100
	Weight: 1012g
	Power Source: DC 12V/0.5A PoE (802.3af)
Power Consumption: Max 5W	
Operating Temp.: -10°C ~ 50°C / 14°F ~ 122°F	

2.0MP 10X Zoom IP Box Camera

## VS-539-HDMI

- 2 MP 1/3.6" 1920 x 1080 CMOS Sensor
- Full HD resolution 1080p30 / 1080i60 Video and Audio Encoding
- 10x Optical Zoom Lens Built-in (F1.8 ~ F2.2, f=4.5mm ~ 45mm)
- 120x Zoom (10x Optical Zoom, 12x Digital Zoom)
- Up to 30fps @ 1920 x 1080 live streaming
- H.264/H.264 & H.264/MJPEG Dual Streaming
- HDMI Video output
- Two-Way Audio Communication (G.711/AAC)
- True Day & Night (Motorized IR Cut Filter)
- BLC (Back Light Compensation)
- WDR (Wide Dynamic Range)
- SD™ Card Recording
- RS-485 Communication, Pelco D or Pelco P Protocol
- Integrated Video Motion Detection
- 2 Motion Sensor Inputs & 2 Alarm Outputs
- Built-in PoE (Power Over Ethernet :802af)
- Various Protocols : TCP/IP, Multicast, UDP, HTTP, SMTP, FTP, DHCP, DNS, Dynamic DNS, RTP, RTSP, SNMP
- PSIA and ONVIF compliant
- SDK & API Available

Price: \$1,399



**2MP** **10x** **PoE**

SPECIFICATIONS

Section	Specifications
Network	Network Interface: Ethernet 10/100Base-T (RJ-45)
	Network Protocol: TCP/IP, UDP, Multicast, DHCP, SMTP, HTTP, SNMP, RTP, RTSP
Camera	Image Sensor: 1/2.5" CMOS Image sensor
	Focal Length: 1/3.6", F1.8~F2.2, f=4.5~45.0mm
	Zoom: x10 Optical zoom and x10 Digital zoom
	MIN. Illuminance: 1.5 Lux (High Sensitivity Mode), F1.8
	Max. Aperture Ratio: 1:1.8
	Motion Image Stabilizer: On/Off
	Back Light compensation: On/Off
	Flip: Vertical Flip, Horizontal Flip
	Exposure: Flickerless, Metering, Mode, Aperture, Shutter Speed, Brightness
	Focus: Focus Range, Zoom Tracking
Video	White Balance Index: Auto, Indoor, Outdoor
	Image Quality: Sharpness, DNR, Chroma CR, Chroma CB, Hue CR, Hue CB
Standards	Main Stream: H.264
	Secondary Stream: H.264/MJPEG
Output: 1 x HDMI type-A, HDMI TX	

Section	Specifications
Video	Resolution: 1920x1080 ~ 352x240, 18 resolution steps
	Max Frame Rate: H.264/MJPEG: 30fps @ all resolutions
	Bitrate: 32Kbps ~ 8Mbps
Audio	Algorithm: G.711, AAC
	Input: 1 x Line-In (Mini-stereo, Single Mono)
	Output: 1 x Line-Out (Mini-stereo, Single Mono)
	Sample Rate: G.711: 8KHz / AAC: 32KHz
Serial Port	Bitrate: G.711: 64Kbps / AAC: 64Kbps, 128Kbps, 196Kbps
	Port: 1 x RS-485
Sensor/Alarm/etc.	Data Rate: 2,400bps ~ 115,200bps
	Sensor Input: 1 x NO Contact
	Alarm Output: 1 x NO Contact
User Interface	Reset Button: 1 x Factory Reset Button
	System Status: LED
Software	True NVR/CMS: Live Monitoring, Recording, Search & Playback, Backup
Physical	Dimensions: 131.6(W) x 61.5(L) x 70.8(H) [mm]
	Weight: 500.4g
	Power Source: DC 12V/0.5A PoE (802.3af)
	Power Consumption: Max 6W
Operating Temp.: -10°C ~ 50°C / 14°F ~ 122°F	

2.0MP 10X Zoom IP Box Camera

Price: \$1,999 / \$2,999

## VS-540-HDMI/VS-540-HDSDI

- 2 MP 1/2.5" 1920 x 1080 CMOS Sensor
- Full HD resolution 1080p30 / 1080i60 Video and Audio Encoding
- 10x Optical Zoom Lens Built-in (F1.8 ~ F2.1, f=5.1mm ~ 51mm)
- 120x Zoom (10x Optical Zoom, 12x Digital Zoom)
- Up to 30fps @ 1920 x 1080 live streaming
- H.264/H.264 & H.264/MJPEG Dual Streaming
- HD-SDI Video Output (VS-540-HDSDI)
- Two-Way Audio Communication (G.711/AAC)
- True Day & Night (Motorized IR Cut Filter)
- BLC (Back Light Compensation)
- WDR (Wide Dynamic Range)
- SD™ Card Recording
- RS-485 Communication, Pelco D or Pelco P Protocol
- Integrated Video Motion Detection
- 2 Motion Sensor Inputs & 2 Alarm Outputs
- Built-in PoE (Power Over Ethernet :802af)
- Various Protocols : TCP/IP, Multicast, UDP, HTTP, SMTP, FTP, DHCP, DNS, Dynamic DNS, RTP, RTSP, SNMP
- PSIA and ONVIF compliant
- SDK & API Available



VS-540-HDMI



VS-540-HDSDI



1.3MP 18X Zoom IP Box Camera

Price: \$1,849 / \$2,399

## VS-542-HDMI/VS-542-HDSDI

- 1.3 MP 1/3" 1280 x 960 progressive scan CCD
- HD resolution 720p30 Video and Audio Encoding
- 18x Optical Zoom Lens Built-in (F1.6 ~ F2.8, f=4.7mm ~ 84.6mm)
- Up to 1280 x 720 @ 30fps (1280x960 @ 20fps)
- H.264/H.264 & H.264/MJPEG Dual Streaming
- HD-SDI Video Output (VS-540-HDSDI)
- Two-Way Audio Communication (G.711/AAC)
- True Day & Night (Motorized IR Cut Filter)
- BLC (Back Light Compensation)
- WDR (Wide Dynamic Range)
- SD™ Card Recording
- RS-485 Communication, Pelco D or Pelco P Protocol
- Integrated Video Motion Detection
- 2 Motion Sensor Inputs & 2 Alarm Outputs
- Built-in PoE (Power Over Ethernet :802af)
- Various Protocols : TCP/IP, Multicast, UDP, HTTP, SMTP, FTP, DHCP, DNS, Dynamic DNS, RTP, RTSP, SNMP
- PSIA and ONVIF compliant
- SDK & API Available



VS-542-HDMI



VS-542-HDSDI



SPECIFICATIONS

Section	Specifications	
Network	Network Interface	Ethernet 10/100Base-T (RJ-45)
	Network Protocol	TCP/IP, UDP, Multicast, DHCP, SMTP, HTTP, SNMP, RTP, RTSP
Camera	Image Sensor	2.0M 1/2.5" CMOS Image Sensor
	Focal Length	F1.8 ~ F2.1, f=5.1mm~51mm
	Zoom	x10 Optical Zoom and x12 Digital Zoom
	Focus Position	∞ ~ 1cm
	Angle of View	Horizontal : 50(Wide) ~ 5.4(Tele)
	Minimum Illuminance	1.0 Lux (B/W), F1.8 with 50 IRE
	S/N Ratio	50 dB or more
	AE Mode	Auto, Manual, Bright, Shutter Priority, Iris Priority, Spot
	IRIS Control	Auto / Manual (F1.8 ~ F26, Close)
	Gain Control	Auto / Manual (-3 ~ 18dB)
	Shutter Control	Auto / Manual (1/2 ~ 1/10,000 sec)
	White Balance	Auto / Manual (Red, Blue Gain Adjustable)
	DSS Limit	1/60 ~ 1/2 or 1/50 ~ 1/2
	Day & Night	Auto / Day / Night (ICR)
Video	Standards	Main Stream: H.264
		Secondary Stream: H.264/MJPEG

Section	Specifications	
Video	Output	1 x HDMI or 1 x HD-SDI (BNC type) (Choose one option)
	Resolution	1920x1080 ~ 352x240, 18 resolution steps
	Max Frame Rate	H.264/MJPEG: 30fps @ all resolutions
Audio	Bitrate	32Kbps ~ 8Mbps
	Algorithm	G.711/AAC
	Input	1 x Line-In (Mini-stereo, Stereo Signal)
	Output	1 x Line-Out (Mini-stereo, Stereo Signal)
	Sample Rate	G.711: 8KHz, AAC: 32KHz
Serial Port	Port	1 x RS-485
	Data Rate	2,400bps ~ 115,200bps
Sensor/Alarm/etc.	Sensor Input	1 x Photo-Coupler Input
	Alarm Output	1 x Relay Output (Normal Open)
	Reset Button	Factory Reset Button
User Interface	System Status	LED
Software	True NVR/CMS	Live Monitoring, Recording, Search & Playback, Backup
	Dimensions	167.1 (W) x 74 (L) x 73 (H) [mm]
Physical	Weight	685g
	Power Source	DC 12V/0.7A PoE : 802.3af
	Power Consumption	Max 8.5W
	Operating Temp.	-10°C ~ 50°C / 14°F ~ 122°F

SPECIFICATIONS

Section	Specifications	
Network	Network Interface	Ethernet 10/100Base-T (RJ-45)
	Network Protocol	TCP/IP, UDP, Multicast, DHCP, SMTP, HTTP, SNMP, RTP, RTSP
Camera	Image Sensor	1/3" Solid State Progressive CCD Scan
	Focal Length	F1.6 ~ F2.8, f=4.7mm~84.6mm
	Zoom	x18 Optical Zoom
	Focus Length	∞ ~ 1.0m(tele) ~ 0.01m(wide)
	Angle of View	Horizontal : 55.2(Wide) ~ 3.2(Tele)
	Minimum Illuminance	0.5 Lux (Color) / 0.02 Lux (B/W), F1.6, 50 IRE, 1/4s, 28dB
	AE Mode	AE / AER / AE+ / AER+ / Shutter / Exposure / AGC
	IRIS Control	Auto / Manual (F1.6 ~ F34)
	Gain Control	Auto / Manual (0 ~ 30dB)
	Shutter Control	Auto / Manual (1/4 ~ 1/10,000 sec)
	White Balance	Auto / Manual (Red, Blue Gain Adjustable)
	DSS Limit	x2 / x4 / x8 Fields
	Day & Night (ICR)	Auto / Manual (ICR)
	Video	Standards
Secondary Stream: H.264/MJPEG		
Video	Output	1 x HDMI or 1 x HD-SDI (BNC type) (Choose one option)

Section	Specifications	
Video	Resolution	1280x960 ~ 352x240, 13 resolution steps
	Max Frame Rate	H.264/MJPEG: 20fps @ 1280x960, 30fps @ 1280x720 ~ 352x240
	Bitrate	32Kbps ~ 8Mbps
Audio	Algorithm	G.711/AAC
	Input	1 x Line-In (Mini-stereo, Stereo Signal)
	Output	1 x Line-Out (Mini-stereo, Stereo Signal)
	Sample Rate	G.711: 8KHz, AAC: 32KHz
Serial Port	Port	1 x RS-485
	Data Rate	2,400bps ~ 115,200bps
Sensor/Alarm/etc.	Sensor Input	1 x Photo-Coupler Input
	Alarm Output	1 x Relay Output (Normal Open)
	Reset Button	Factory Reset Button
User Interface	System Status	LED
Software	True NVR/CMS	Live Monitoring, Recording, Search & Playback, Backup
	Dimensions	188.1 (W) x 74 (L) x 73 (H) [mm]
Physical	Weight	855g
	Power Source	DC 12V/0.6A PoE: 802.3af
	Power Consumption	Max 7.5W
	Operating Temp.	-10°C ~ 50°C / 14°F ~ 122°F



## 5MP IP Box Camera VS-7300

Price: \$799

- 5 MP 1/2.5" 2592 x 1944 CMOS Image Sensor
- High Resolution Video streaming 2592 x 1944 @ 15fps
- H.264/H.264 & H.264/MJPEG Dual Streaming
- C/CS lens mount
- True Day & Night (Motorized IR Cut Filter)
- Auto Iris (DC) lens control
- Integrated Video Motion Detection
- Built-in PoE (Power Over Ethernet :802af)
- SD™ card recording
- Two-way audio communication (G.711/AAC)
- Motion Sensor Input & Alarm Output
- Built-in PoE (Power Over Ethernet :802af)
- Transmission of video bitrate control (32kbps ~ 15Mbps)



### SPECIFICATIONS

Section	Specifications	
Network	Network Interface	Ethernet 10/100Base-T (RJ-45)
	Network Protocol	TCP/IP, UDP, Multicast, DHCP, SMTP, HTTP, SNMP, RTP, RTSP
Camera	Image Sensor	1/2.5" CMOS Image sensor
	Lens	C/CS Mount selectable (Lens is not included)
	Max. Aperture Ratio	1:1.8
	Motion Image Stabilizer	On/Off
	Back Light compensation	On/Off
	Flip	Vertical Flip, Horizontal Flip
	Exposure	Flickerless, Metering, Mode, Aperture, Shutter Speed, Brightness
	Focus	Focus Range, Zoom Tracking
	White Balance Index	Auto, Indoor, Outdoor
	Image Quality	Sharpness, DNR, Chroma CR, Chroma CB, Hue CR, Hue CB
Video	Motion Detection	On/Off
	Standards	Main Stream: H.264 Secondary Stream: H.264/MJPEG
Resolution	2592x1944, 2560x1600, 2048x1536, 2048x1080 ~ 176x120	

Section	Specifications	
Max Frame Rate	MJPEG: 15fps @ 2592x1944, 18fps @ 2560x1600, 25fps @ 2048x1536, 30fps @ 2048x1080 ~ 176x120	H.264: 8fps @ 2592x1944, 10fps @ 2560x1600, 15fps @ 2048x1536, 30fps @ 2048x1080 ~ 176x120
	Bitrate	32Kbps ~ 15Mbps
Audio	Algorithm	G.711, AAC
	Input	1 x Line-In (Mini-stereo, Single Mono)
	Output	1 x Line-Out (Mini-stereo, Single Mono)
	Sample Rate	G.711: 8KHz / AAC: 32KHz
	Bitrate	G.711: 64Kbps AAC: 64Kbps, 128Kbps, 196Kbps
Serial Port	Port	1 x RS-485
	Data Rate	2,400bps ~ 115,200bps
Sensor/Alarm/etc.	Sensor Input	1 x NO Contact
	Alarm Output	1 x NO Contact
	Reset Button	1 x Factory Reset Button
User Interface	System Status	LED
Software	True NVR/CMS	Live Monitoring, Recording, Search & Playback, Backup
Physical	Dimensions	103.5(W) x 70.3(L) x 70.6(H) [mm]
	Weight	437.0g (without Lens)
	Power Source	DC 12V/0.5A PoE (802.3af)
	Power Consumption	Max 6W

## 3MP IP Box Camera VS-6300

Price: \$699

- 3 MP 1/2.5" 2048 x 1536 CMOS Image Sensor
- High Resolution Video streaming 2048 x 1536 @ 15fps
- H.264/H.264 & H.264/MJPEG Dual Streaming
- C/CS lens mount
- True Day & Night (Motorized IR Cut Filter)
- Auto Iris (DC) lens control
- Integrated Video Motion Detection
- Built-in PoE (Power Over Ethernet :802af)
- SD™ card recording
- Two-way audio communication (G.711/AAC)
- Motion Sensor Input & Alarm Output
- Built-in PoE (Power Over Ethernet :802af)
- Transmission of video bitrate control (32kbps ~ 15Mbps)



### SPECIFICATIONS

Section	Specifications	
Network	Network Interface	Ethernet 10/100Base-T (RJ-45)
	Network Protocol	TCP/IP, UDP, Multicast, DHCP, SMTP, HTTP, SNMP, RTP, RTSP
Camera	Image Sensor	1/2.5" CMOS Image sensor
	Lens	C/CS Mount selectable (Lens is not included)
	Max. Aperture Ratio	1:1.8
	Motion Image Stabilizer	On/Off
	Back Light compensation	On/Off
	Flip	Vertical Flip, Horizontal Flip
	Exposure	Flickerless, Metering, Mode, Aperture, Shutter Speed, Brightness
	Focus	Focus Range, Zoom Tracking
	White Balance Index	Auto, Indoor, Outdoor
	Image Quality	Sharpness, DNR, Chroma CR, Chroma CB, Hue CR, Hue CB
Video	Motion Detection	On/Off
	Standards	Main Stream : H.264 Secondary Stream : H.264/MJPEG
Resolution	2048x1536, 2048x1080 ~ 176x120	

Section	Specifications	
Video	Max Frame Rate	MJPEG: 25fps @ 2048x1536, 30fps@2048x1080 ~ 176x120
	Bitrate	H.264: 15fps @ 2048x1536, 30fps @ 2048x1080 ~ 176x120
Audio	Algorithm	32Kbps ~ 15Mbps
	Input	G.711, AAC
	Output	1 x Line-In (Mini-stereo, Single Mono)
	Sample Rate	1 x Line-Out (Mini-stereo, Single Mono)
Serial Port	Port	G.711: 8KHz / AAC: 32KHz
	Data Rate	Bitrate: G.711: 64Kbps AAC: 64Kbps, 128Kbps, 196Kbps
Sensor/Alarm/etc.	Sensor Input	1 x RS-485
	Alarm Output	2,400bps ~ 115,200bps
	Reset Button	1 x NO Contact
User Interface	System Status	1 x NO Contact
Software	True NVR/CMS	1 x Factory Reset Button
	Dimensions	LED
Physical	Weight	Live Monitoring, Recording, Search & Playback, Backup
	Power Source	103.5(W) x 70.3(L) x 70.6(H) [mm]
	Power Consumption	437.0g (without Lens)

## 2.0MP IP Box Camera VS-5320

Price: \$599

- 2 MP 1/2.5" 1920 x 1080 CMOS Image Sensor
- High Resolution Video streaming 1920 x 1080 @ 30fps
- H.264/H.264 & H.264/MJPEG Dual Streaming
- C/CS lens mount
- True Day & Night (Motorized IR Cut Filter)
- Auto Iris (DC) lens control
- Integrated Video Motion Detection
- Built-in PoE (Power Over Ethernet :802af)
- SD™ card recording
- Two-way audio communication (G.711/AAC)
- Motion Sensor Input & Alarm Output
- Built-in PoE (Power Over Ethernet :802af)
- Transmission of video bitrate control (32kbps ~ 8Mbps)



## 1.3MP IP Box Camera VS-5310

Price: \$519

- 1.3 MP 1/3" 1280 x 720 Sony CCD Image Sensor
- High Resolution Video streaming 1280x720@ 30fps
- H.264/H.264 & H.264/MJPEG Dual Streaming
- C/CS lens mount
- True Day & Night (Motorized IR Cut Filter)
- Auto Iris (DC) lens control
- Integrated Video Motion Detection
- Built-in PoE (Power Over Ethernet :802af)
- SD™ card recording
- Two-way audio communication (G.711/AAC)
- Motion Sensor Input & Alarm Output
- Built-in PoE (Power Over Ethernet :802af)
- Transmission of video bitrate control (32kbps ~ 8Mbps)



### SPECIFICATIONS

Section	Specifications	
Camera	Image Sensor	1/3" CMOS Image Sensor
	Min Illumination	0.5 Lux (Color) / 0.02 Lux (B/W), F1.6, 50 IRE, 1/4s, 28dB
	S/N Ratio	38.1dB
Image Enhancement	Gain Control	Auto / Manual
	White Balance	AWB Auto On/Off
	True Day & Night (TDN)	0
	Backlight Compensation	BLC
	Flickerless	50Hz/60Hz
	On-Screen Display	English
	Motion Detection	0
Lens	Flip Mode	Horizontal / Vertical
	Lens Mount	C/CS Mount
Video	Digital Shutter Speed (DSS)	Off/Auto (1/30 ~ 3SEC)
	Video Compression	H.264 MP Level4
Video	Frame Rate	1 ~ 30fps
	Bitrate	32Kbps ~ 8Mbps
	Resolutions	1920 x 1080

Section	Specifications	
Video	Video Streaming	Primary : H.264, Secondary : H.264, MJPEG
	Image Control	Brightness/Contrast
	Backup	SD Card, FTP
Audio	Audio Compression	G.711, AAC-LC
	Audio Sampling Rate	G.711: 8KHz, AAC: 32KHz
	Audio Input/Output	1x Line-In (Stereo), 3x Line-Out (Stereo)
Network	Network Interface	Ethernet 10/100Base-T (RJ-45)
	Network Protocol	TCP/IP, UDP, Multicast, DHCP, SMTP, HTTP, SNMP, RTP, RTSP
Integration Interface	API (Application Programming Interface)	TSDK, PSAL, OnVIF
	Serial Connectors	1 x RS-485
	Sensor Input	1 x NO Contact
	Alarm Input	1 x NO Contact
General	Power Supply	DC 12V/3A & Power Over Ethernet : 802.3af
	Power Consumption	Max 6W
	Operating Temperature	-40°C ~ 50°C / -40°F ~ 122°F
	Dimensions	66.42(W) X 127.50(L) X 58.80(H)mm
	Weight	531g

### SPECIFICATIONS

Section	Specifications	
Network	Network Interface	Ethernet 10/100Base-T (RJ-45)
	Network Protocol	TCP/IP, UDP, Multicast, DHCP, SMTP, HTTP, SNMP, RTP, RTSP
Camera	Image Sensor	1/3" Sony CCD Image Sensor
	Lens	C/CS Mount (Lens is not included)
	MIN. Illuminance	0.7 Lux (Color) / 0.02 Lux (B/W) @ 50 IRE
	AE Operation	Mechanical Iris lens selection, Slow Shutter on/off
	AWB Operation	Flickerless, Backlight Function, Brightness, Max AGC Gain
	Motion Detection	Auto white balance control
Video	Standards	Main Stream: H.264 Secondary Stream: H.264/MJPEG
	Resolution	1280x960 ~ 352x240, 13 resolution steps
	Max Frame Rate	H.264/MJPEG: 22.5fps @ 1280x960, 30fps @ 1280x720 ~ 352x240
	Bitrate	32Kbps ~ 8Mbps

Section	Specifications	
Audio	Algorithm	G.711, AAC
	Input	1 x Line-In (Mini-stereo, Single Mono)
	Sample Rate	G.711: 8KHz, AAC: 32KHz
Serial Port	Port	G.711: 64Kbps / AAC: 64Kbps, 128Kbps, 196Kbps
	Data Rate	1 x RS-485 2,400bps ~ 115,200bps
Sensor/Alarm/etc.	Sensor Input	1 x NO Contact
	Alarm Output	1 x NO Contact
	Reset Button	1 x Factory Reset Button
User Interface	System Status	LED
Software	True NVR/CMS	Live Monitoring, Recording, Search & Playback, Backup
	Dimensions	103.5(W) x 70.3(L) x 70.6(H) [mm]
Physical	Weight	437.0g (without Lens)
	Power Source	DC 12V/0.5A PoE (802.3af)
	Power Consumption	Max 6W
	Operating Temp.	-10°C ~ 50°C / 14°F ~ 122°F

D1 IP Box Camera

## VS-330

- 1/3" Sony HAD 768 x 494 CCD sensor
- Full D1 resolution @ 30fps
- H.264/H.264 & H.264/MJPEG Dual Streaming
- Composite
- C/CS lens mount
- True Day & Night (Motorized IR Cut Filter)
- Auto Iris (DC) lens control
- Integrated Video Motion Detection
- Built-in PoE (Power Over Ethernet :802af)
- SD™ card recording
- Two-way audio communication (G.711/AAC)
- Motion Sensor Input & Alarm Output
- Built-in PoE (Power Over Ethernet :802af)
- Transmission of video bitrate control (32kbps ~ 8Mbps)



D1

PoE

D1

PoE

D1

PoE

D1

PoE

SPECIFICATIONS

Section	Specifications	
Network	Network Interface	Ethernet 10/100Base-T (RJ-45)
	Network Protocol	TCP/IP, UDP, Multicast, DHCP, SMTP, HTTP, SNMP, RTP, RTSP
Camera	Image Sensor	1/3" Sony Super HAD CCD, 410,000 pixels
	Max. Aperture Ratio	1:1.3~2.0
	Lens	C/CS Selective (Lens is not included)
	Back Light Compensation	On/Off/Auto
	Gain Control	AGC-L, AGC-H, OFF selectable
	White Balance	W-ATW/S-AWC/AWC/Manual
	Output	1 x Composite (1 Vpp 75 Ohm, BNC)
	Electric Shutter Speed	1/60 ~ 1/200,000 sec
	Min. Illumination	0.002Lux (Intensifier), 0.3Lux (F1.3)
	S/N Ratio	50dB (AGC Off)
Motion Detection	MD1 / MD2 / OFF	
Standards	Standards	Primary : H.264, Secondary: H.264/MJPEG (VS-330)
	Data Rate	32Kbps ~ 4Mbps
	Resolution	NTSC : 720x480, 720x240, 352x480, 352x240 PAL : 720x576, 720x288, 352x576, 352x288 540 TV Line

Section	Specifications	
Video	Max Frame Rate	NTSC : Max 30fps / PAL : Max 25fps
	Frame Rate Range	NTSC : 0.2 ~ 30fps / PAL : 0.2 ~ 25fps
Audio	Standards	G.711
	Sample Rate	8KHz
	Data Rate	64Kbps
	Input	1 x Line-In (Mini-stereo, Single Mono)
Serial	Output	1 x Line-Out (Mini-stereo, Single Mono)
	Port	1 x RS-485
Sensor/Alarm/etc.	Data Rate	2,400bps ~ 115,200bps
	Sensor Input	1 x NO Contact
User Interface	Alarm Output	1 x NO Contact
	Reset Button	1 x Factory Reset Button
Software	System Status	LED, OSD
	True CMS/Web Viewer	Live Monitoring, Recording, Search & Playback, Backup
Physical	Dimensions	103.5(W) x 70.3(L) x 70.6(H) [mm]
	Weight	437.0g (without Lens)
	Power Source	DC 12V/0.4A PoE (802.3af)
	Power Consumption	Max 5W
Operating Temp.	-10°C ~ 50°C / 14°F ~ 122°F	

1.3MP IP Bullet Camera

## VS-531BIR

- 1/3" Sony 1280 x 960 progressive CCD image sensor
- 1.3 MP streaming up to 1280 x 960 @ 22.5fps
- H.264/H.264 & H.264/MJPEG dual streaming
- Megapixel Varifocal Auto Iris lens (F1.2, f=3.6~16mm)
- 44 IR LEDs weather-proof bullet camera
- Composite video output
- True Day & Night (Motorized IR Cut Filter)
- Two-way audio communication (G.711/AAC)
- Motion Sensor Input & Alarm Output
- Built-in PoE (Power Over Ethernet :802af)
- Transmission of video bitrate control (32kbps ~ 8Mbps)
- IP66-Rated



1.3MP

IR Illumination

PoE

IP66

SPECIFICATIONS

Section	Specifications	
Network	Network Interface	Ethernet 10/100Base-T (RJ-45)
	Network Protocol	TCP/IP, UDP, Multicast, DHCP, SMTP, HTTP, SNMP, RTP, RTSP
Camera	Image Device	1/3" Sony CCD Progressive Scan
	Lens	DC Auto Iris, f=3.6mm~16mm, F1.2, IR Cut Filter Removable
	IR	850nm, 44 IR LEDs
	Slow Shutter	On / Off
	MIN. Illuminance	Color: 1.5Lux (Slow frame: 0.4Lux), B/W : 0Lux (IR LED ON)
	MAX. Slow Frame	0~8 FPS Selectable
	Shutter Speed (auto)	1/30 ~ 1/100,000 sec
	Shutter Speed (Manual)	1/30, 1/50, 1/100, 1/250, 1/350, 1/500, 1/1000, 1/2000 sec Selectable
	Backlight Function	On / Off
	Brightness	Adjustable
MAX. AGC Gain	Adjustable	
Digital Day & Night	On / Off	
Night->Day Transition	Adjustable	
Day->Night Transition	Adjustable	
DC Iris Lens Control	Adjustable	
Volume	Adjustable	
AWB Mode	ATW Mode / PUSH Mode / Manual Mode	
R Gain	Adjustable	
B Gain	Adjustable	

Section	Specifications	
Video	Algorithm	Primary : H.264 Secondary : H.264 / M-JPEG
	Resolution	1280x960 ~ 352x240, 13 resolution steps
	Max Frame Rate	H.264/MJPEG: 22.5fps @ 1280x960, 30fps @ 1280x720 ~ 352x240
	Bitrate	32Kbps ~ 8Mbps
Audio	Output	1 x Composite (1 Vpp 75ohm, pitch 2mm connector)
	Algorithm	G.711, AAC
Audio	Sample Rate	G.711: 8KHz / AAC: 32KHz
	Bitrate	G.711: 64Kbps / AAC: 64Kbps, 128Kbps, 196Kbps
Serial Port	Input	Line-In (Single Mono) : RCA Female cable
	Output	Line-Out (Single Mono) : RCA Female cable
Sensor/Alarm	Baud Rate	2,400bps ~ 115,200bps
	Port	RS-485 : Terminal block cable
Software	Sensor Input	1 x NO Contact
	Alarm Output	1 x NO Contact
Physical	True NVR/CMS	Live Monitoring, Recording, Search & Playback, Backup
	Power	DC 12V, 0.5A (IR LED ON : 0.85A), PoE : (802.3af)
Physical	Dimensions	Ø80 x 285 (L) [mm]
	Weight	1,300g
	Operation Temperature	-10 °C ~ 50 °C

## Network Video Recording Software VS-NVR

VS-NVR is a powerful IP Video Surveillance Software that provides rich features and functionality. VS-NVR offers live monitoring and recording of a large number of IP cameras and video servers with an simple-to-use interface. Various types of events and schedule-based recording functions are designed to fulfill customer needs. Relay function provides stable real-time streaming and prevents system overload.



### FEATURES

- Manage up to 128 cameras
- 16/36/64CH simultaneous live monitoring
- 16/36/64/128CH simultaneous recording
- 16CH simultaneous search & playback
- TMAP based recording
- Streaming relay function
- Easy installation
- Supports secondary monitor window
- Two-way audio communication
- Recording based on schedule-associated events
- Various events monitoring and alarm notification
- Supports H.264 and MJPEG video compression
- Supports multi-monitoring
- Camera group monitoring
- Supports megapixel cameras
- Customized event creation by event handler

## Network Video Recording Software VS-NVR

### USER INTERFACE

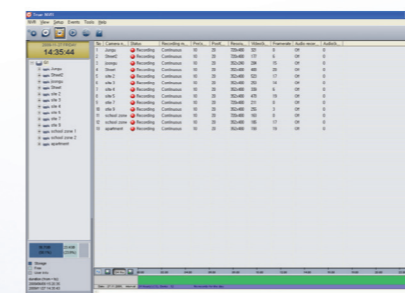
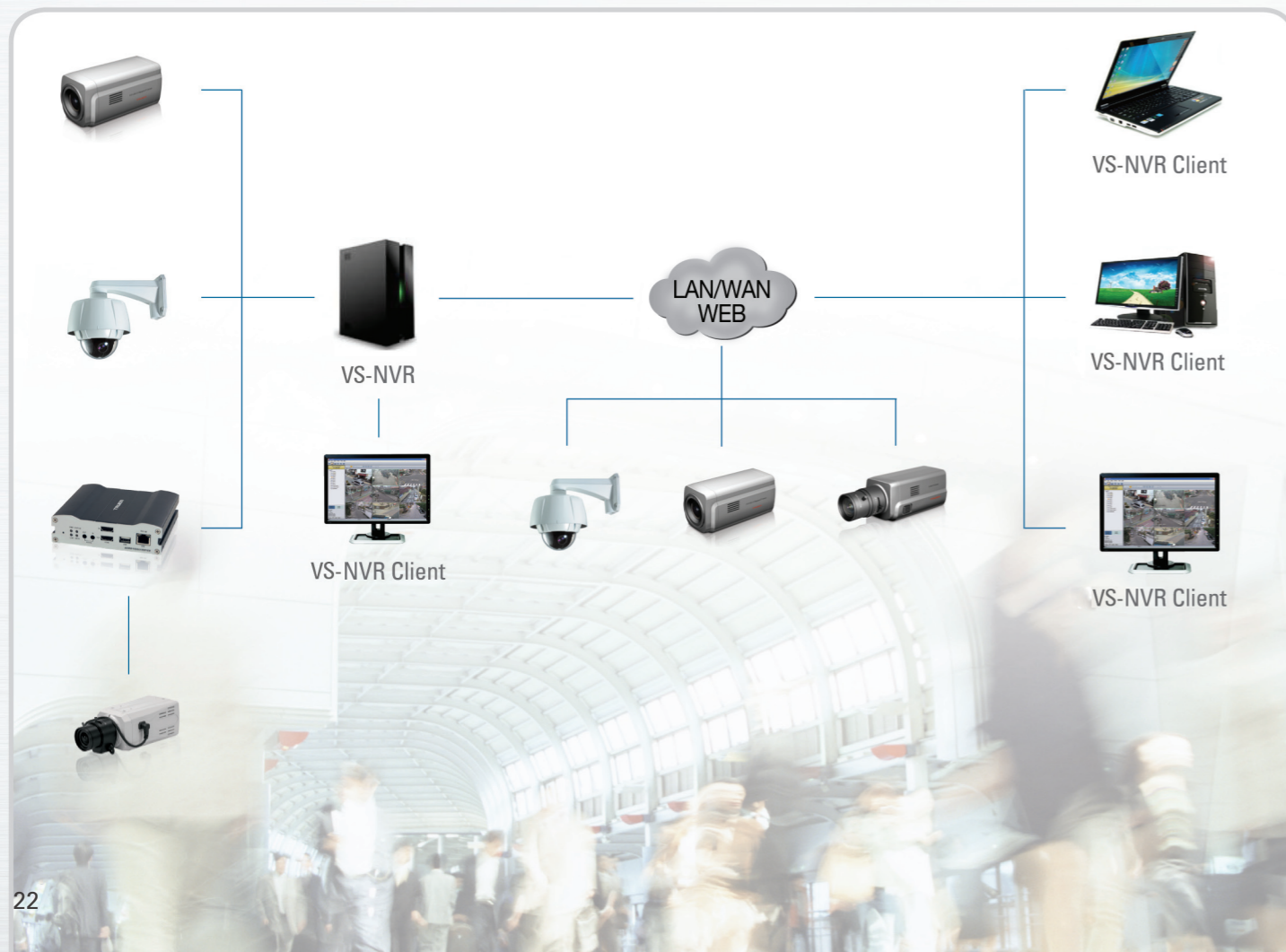
#### Live View Mode

- Automatic camera IP discovery
- Automatic display unit mapping
- On-Screen PTZ Control
- Automatic video encoding setting according to various screen modes
- Decoding visible channels function
- Reading setup from cameras
- JPEG snapshot with watermarking
- Transfer of snapshot image through e-mail and FTP



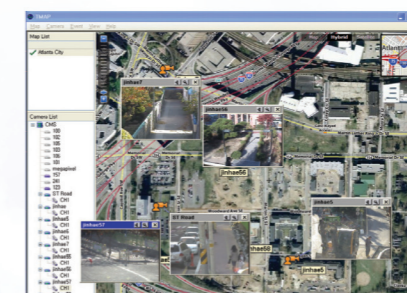
#### Recording

- Pre & post event recording
- Customized Schedule recording
- Manual storage setup
- AVI file backup
- Copies same recording setup for many cameras



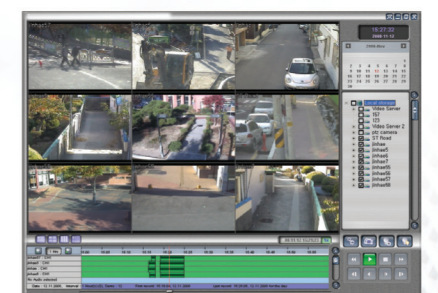
#### Record Mode

Recording status for the system can be monitored in this mode. More cameras can be accommodated for recording and streaming as they do not use CPU load for decoding and display.



#### E-Map







- Map-based monitoring
- Easy placement of cameras on a map
- Automatic video pop-up based on events
- List of cameras from NVR or CMS
- Audio broadcast function
- Two-way audio communication with cameras



#### Search & Play Back

- 16CH simultaneous playback
- Remote search by events
- Bookmark function
- Holiday setup
- Easy playback control interface

## Mounting Brackets for VS-370 and VS-570 Series Dome Cameras

Picture	Part #	Description	For use with these Cameras or Brackets	Price
	VS-B370-10W	Wall Mount Bracket (For Indoor and Outdoor use)	VS-370-X10	\$125
	VS-B370-10C	Ceiling Mount Bracket (For Indoor and Outdoor use)	VS-370-X10	\$125
	VS-B570-W	Wall Mount Bracket (For Indoor and Outdoor use)	VS-570 VS-571 VS-572 VS-370-X27 VS-370-X37	\$170
	VS-B570-C	Ceiling Mount Bracket (For Indoor and Outdoor use)	VS-570 VS-571 VS-572 VS-370-X27 VS-370-X37	\$150
	VS-B570-P	Pole Mount Bracket (For Indoor and Outdoor use) For use with Wall Mount Brackets	VS-B370-10W VS-B570-W	\$150
	VS-B570-R	Corner Mount Bracket (For Indoor and Outdoor use) For use with Wall Mount Brackets	VS-B370-10W VS-B570-W	\$150