

# Display Stand Series

## Monitor Walls

a collection of display walls designed for a clean, aesthetically-pleasing installation and shipped with an integrated power strip

### features:

- Designed for professionally-finished installations with a convenient cable management system, display micro-adjustment mechanism and power strip that attaches to the support channel
- UL 1678 Listed for Institutional use, for multi-use environments including public, educational and institutional spaces
- Available with casters or levelers for mobile or fixed use
- Mounts displays up to 55" in 2x2 configuration



### specifications:

DisplayStation Series monitor walls shall be Middle Atlantic Products model #DS-600-2X2\_-AL (Casters or Leveling feet, see chart). Overall dimensions of DS shall be \_\_\_"H x 75.79" W x \_\_\_"D (see drawing). DS shall have\_\_\_ (Levelers, Casters (2 locking), refer to chart). DS shall accept 4 monitors, with a \_\_\_\_\_ (600X400, 400X400) VESA pattern and accept displays with a recommended diagonal measurement of 42" to 55". DS series shall have a clear anodized aluminum finish. DS shall have an overall weight capacity of 362 lbs, with no more than 352 lbs. for the monitors. DS shall include a 15 Amp power strip with 8 outlets and 9' cord with 5-15P termination. DS shall have integrated cable management. DS shall be UL Listed for institutional use to UL 1678 in the US and CAN/CSA C22.2 No 60065-03 in Canada. DS shall comply with requirements of RoHS EU Directive 2002 / 95 / EC and 2011/65/EU. DS shall be manufactured by an ISO 9001 registered company. DS shall be warrantied to be free from defects in material or workmanship under normal use and conditions for 7 years.

Customizable specification clips available at [middleatlantic.com](http://middleatlantic.com)



### options:

- Camera Shelf shall be model # DS-CS108-BS, mounts above monitor, and have a usable mounting area of 11.1" x 8.15" and having a weight capacity of 5 lbs.
- Utility Shelf shall be model DS-UTS10-B, mount below monitor, have a usable mounting area of 10" wide by 11.25" deep and have a weight capacity of 10 lbs.
- Lock Box shall mount to the rear in a vertical or horizontal orientation, have a useable mounting area of 13.78" D x 15.75" W x 3.1" H, 10 lb. weight capacity and 4qty 1.18" cable pass through grommets in the rear

what **great systems** are built on.™

A Group brand | **legrand**

  
**Middle Atlantic Products**  
[middleatlantic.com](http://middleatlantic.com) | [middleatlantic.ca](http://middleatlantic.ca)

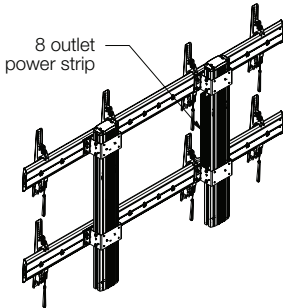
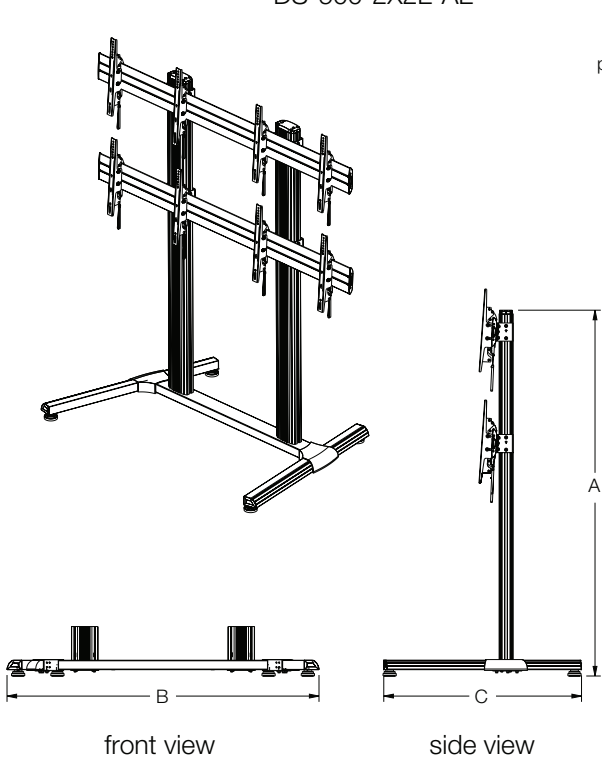
96-01227 / rev a / 5-29-15

# Display Stand Series

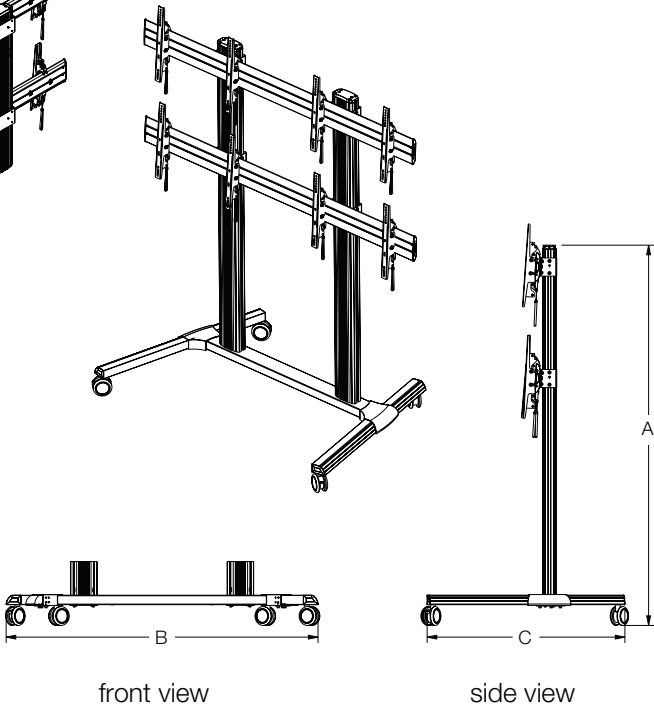
basic dimensions

all dimensions in inches unless otherwise noted [all dimensions in brackets are in millimeters]

DS-600-2X2L-AL



DS-600-2X2C-AL



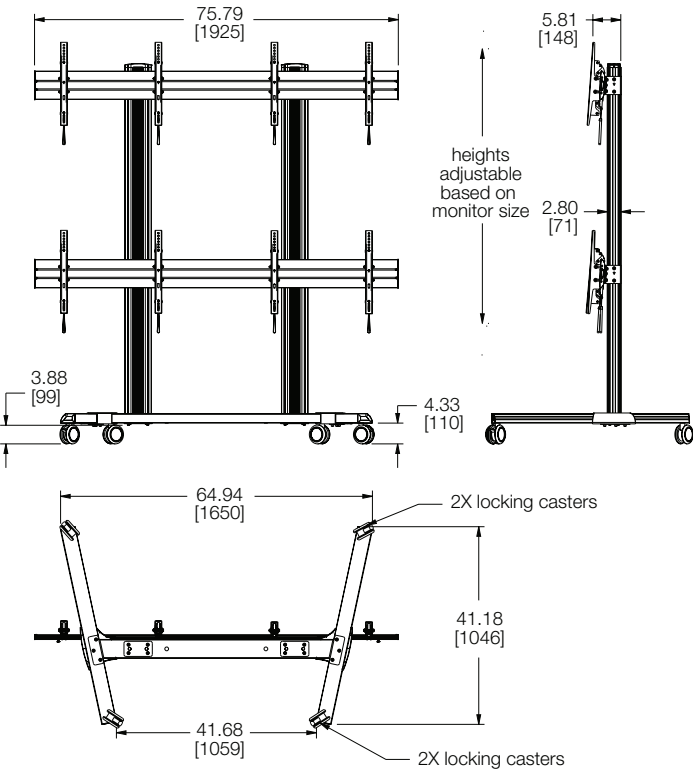
Part #	Description	A	B	C	No. of Outlets Included On Power Strip
DS-600-2X2L-AL	DS STND,V6002X2, LEVELERS	76.21 [1935.8]	65.00 [1651.0]	41.26 [1048.1]	8
DS-600-2X2C-AL	DS STND,V6002X2,CASTERS	79.70 [2024.3]	65.00 [1651.0]	41.20 [1046.4]	8

# Display Stand Series

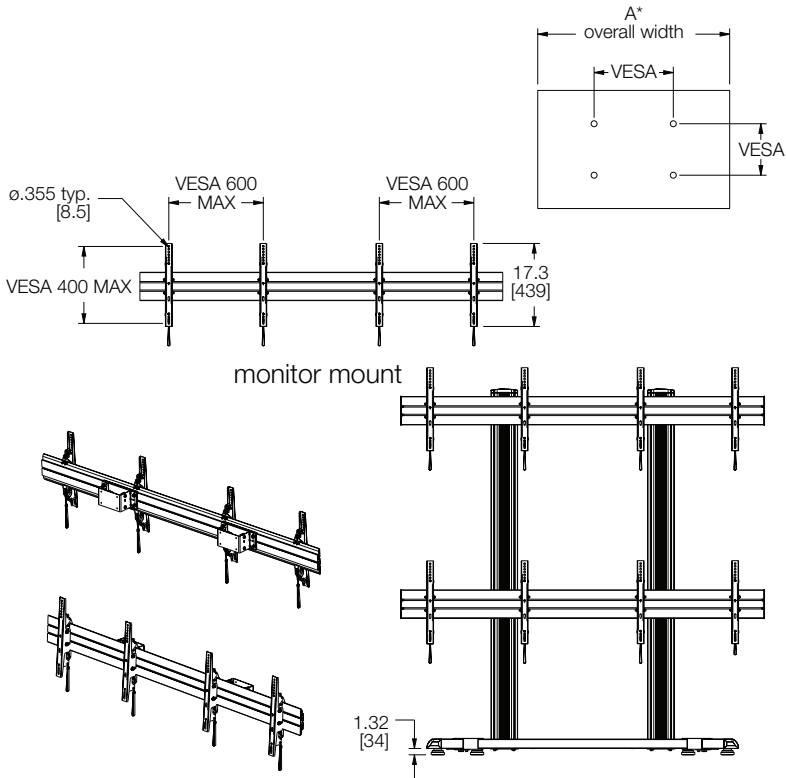
## basic dimensions

all dimensions in inches unless otherwise noted [all dimensions in brackets are in millimeters]

DS-600-2X2C-AL



DS-600-2X2L-AL

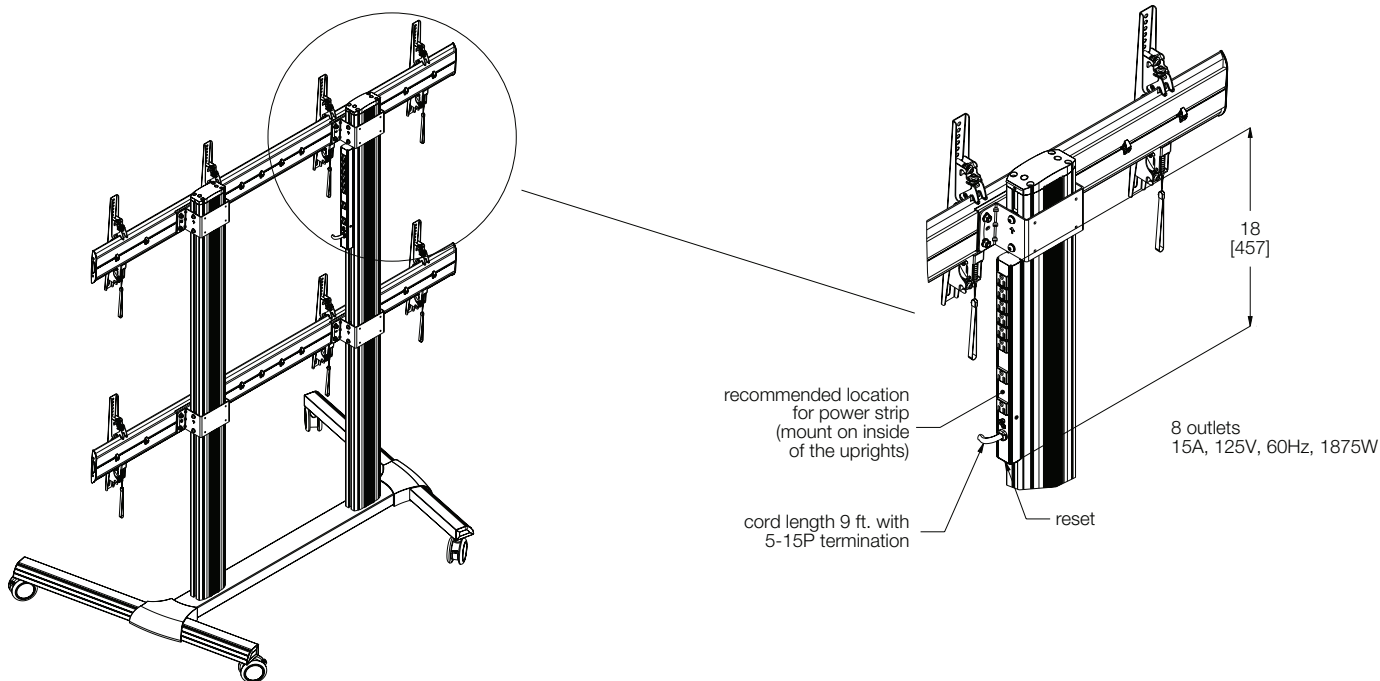


Part #	A* [VESA 600X400] Display Width		A* [VESA 400X400] Display Width		Total Monitor Weight Capacity, LB [KG]	Total Monitor Weight Capacity with Accessories, LB [KG]	Recommended Display Size (Diagonal Measurement)
	Min	Max	Min	Max			
DS-600-2X2L-AL	38.0" [966,2]	50.0" [1270]	38.0" [966,2]	50.0" [1422]	352 [159,6]	362 [164,2]	42" - 55"
DS-600-2X2C-AL	38.0" [966,2]	50.0" [1270]	38.0" [966,2]	50.0" [1422]	352 [159,6]	362 [164,2]	42" - 55"

# Display Stand Series

basic dimensions

all dimensions in inches unless otherwise noted [all dimensions in brackets are in millimeters]



what **great systems** are built on.™

A Group brand | **legrand**

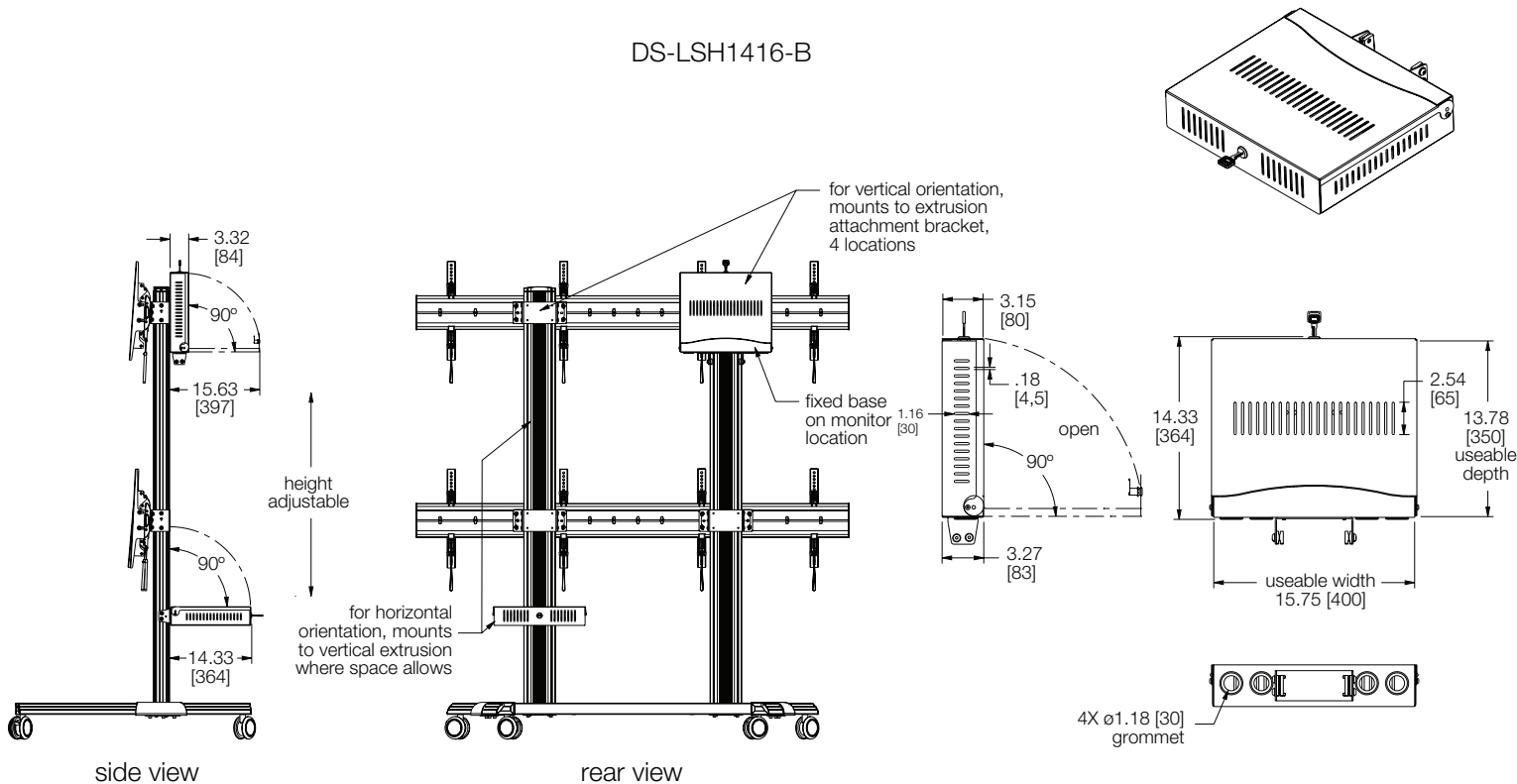
**Middle Atlantic Products**  
middleatlantic.com | middleatlantic.ca

# Display Stand Series

basic dimensions

all dimensions in inches unless otherwise noted [all dimensions in brackets are in millimeters]

DS-LSH1416-B



Part #	Description	Weight Capacity, Lb (KG)
DS-LSH1416-B	DS LOCKSHELF 14X16 BLACK	10 [4.5]

what **great systems** are built on.™

A Group brand | **legrand**

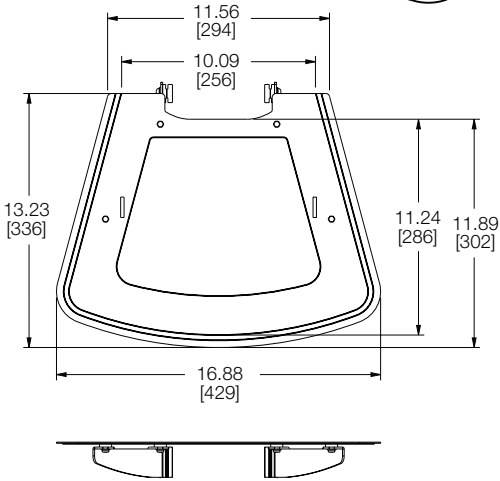
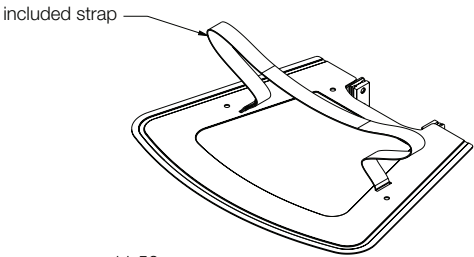
**Middle Atlantic Products**  
middleatlantic.com | middleatlantic.ca

# Display Stand Series

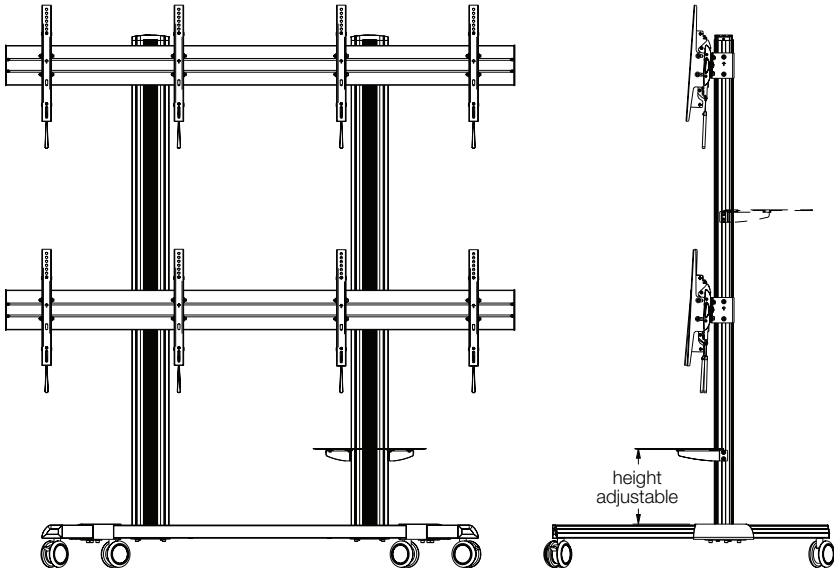
## basic dimensions

all dimensions in inches unless otherwise noted [all dimensions in brackets are in millimeters]

DS-UTS10-B



front view



front view

Part #	Description	Weight Capacity, Lb (KG)
DS-UTS10-B	DS UTSHELF BLACK	10 [4.5]

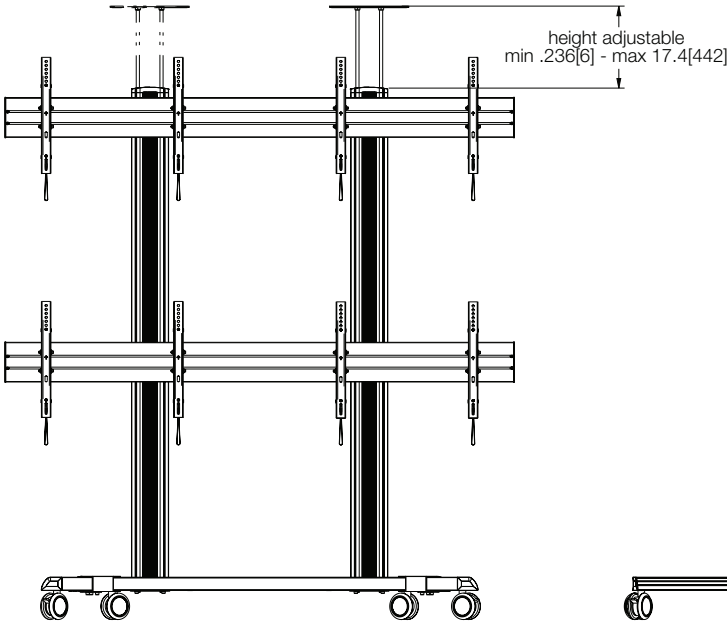
NOTE: Shelf mount forward or rear facing to vertical extrusion where space allows

# Display Stand Series

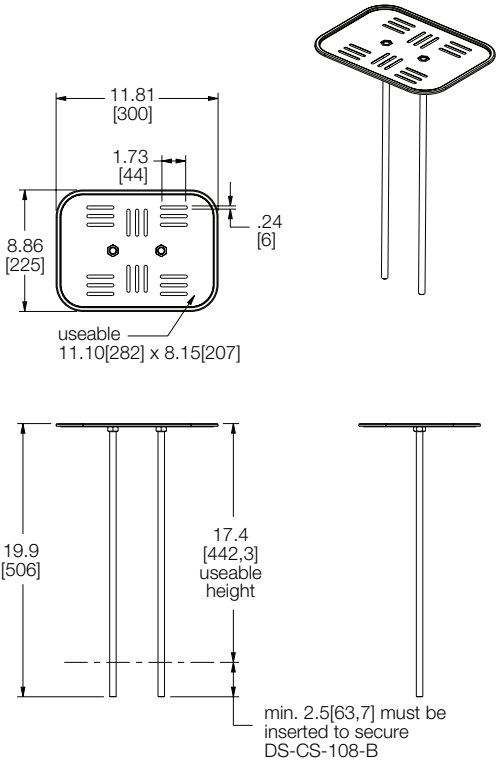
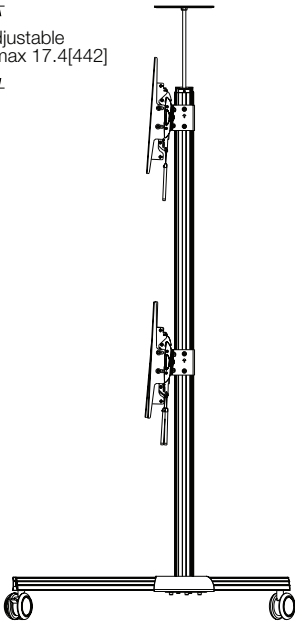
## basic dimensions

all dimensions in inches unless otherwise noted [all dimensions in brackets are in millimeters]

DS-CS108-B



front view



Part #	Description	Weight Capacity, Lb (KG)
DS-CS108-B	DS CAMERA SHELF	5 [2,2]