

## Heavy - Duty DC, D and TD Series Drawers

**UL US Listed** Fully enclosed with inside dimensions measuring 15 7/8" wide by 14 1/2" deep the DC, D and TD series drawers feature spring loaded latches and rugged, straightforward construction. Faceplates come with a silver brushed and anodized, black brushed and anodized or textured black powder coat finish.

Installed keylock available optionally, just suffix the desired part number with letters "LK" when ordering.

Two, three and four space drawers have been updated to include **NEW** no-slip drawer mat and rear cable grommet.



D3



TD8-FLK

**A&E Spec. #96-006** [Download or view PDF file](#)

Silver Anodize Finish Part #	Black Anodized Finish Part #	Textured Finish Part #	Racking Height
DC2	D2	TD2	3-1/2" (2 space)
DC3	D3	TD3	5-1/4" (3 space)
DC4	D4	TD4	7" (4 space)
--	D5	TD5	8-3/4" (5 space)
--	--	TD8-FLK*	14" (8 space)

\*includes file hanging kit and installed keylock



Two, three and four space drawers now include a protective rear cable grommet and no-slip drawer mat.



## Media Partitions for D, TD, and UD Series Drawers

Partition your D, TD, and UD series drawers for media storage. **Super** fit is also handy for small parts and miscellaneous hardware.

Part #	Fits	Accommodates
DCDP	D4, TD4, UD4	103 compact discs
DVDP	D4, TD4, UD4	40 DVD discs
DVHSP	D3, TD3, UD3	24 VHS tapes



D4 with DCDP

## Lockboxes

**UL US Listed** Safely secure gear in our rackmount LBX series lockboxes. 9" deep, 3 and 4 space models are offered with a durable black powder coat finish

Part #	Racking Height	Depth
LBX-3	5-1/4" (3 space)	9"
LBX-4	7" (4 space)	9"

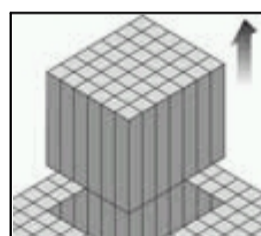


LBX-3

## NEW Customizable Foam Inserts

**UL US Listed** Customizable foam inserts can be modified to hold any accessory tightly in place. Protects sensitive equipment and tools from shifting or becoming damaged when drawers are opened and closed. Fits any Middle Atlantic Products drawer.

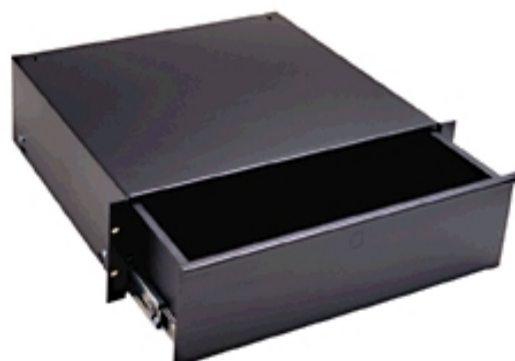
Part #	Description
FI-2	customizable foam insert, fits 2 space drawer
FI-3	customizable foam insert, fits 3 space drawer
FI-4	customizable foam insert, fits 4 space drawer



## UD Series Drawers

**UL US Listed** Drawer contents will always remain inside with the fully enclosed design of our UD series rackmountable utility drawers (2, 3 and 4 space drawers only). 1 space drawer can be reversed for use as sliding shelf. Each model comes with a face mounted drawer pull. User installed latch and keylock are available for 2, 3 and 4 space models. Black powder coat finish.

Part #	Inside Dimensions	Racking Height
<b>NEW</b> UD1	15-7/8" W x 133/8" D	1-3/4" (1 space)
UD2	15-15/16" W x 141/2" D	3-1/2" (2 space)
UD3	15-15/16" W x 141/2" D	5-1/4" (3 space)
UD4	15-15/16" W x 141/2" D	7" (4 space)



UD3

Part #	Option Description
KYLK	user installed UD keylock
LATCH	user installed UD latch
ACC-KEY	addl. set of keys for KYLK
DM	non-slip drawer mat



UD1



UD1 installed as a sliding shelf

