

# PCS Series

fiber/cable spools

manage excess fiber or copper cable slack  
within a rack

## features:

- Provides proper bend radius for cables
- Available in 1-3/8" and 3" depth sizes
- 4-pack configurations include mounting hardware and two brackets to allow for making a complete circle
- 2 space panel includes two spools which can rotate



## specifications:

Fiber/Cable spools shall be Middle Atlantic Products model # PCS-\_\_\_\_(refer to chart). PCS shall be \_\_\_\_ (refer to chart) deep and have a bend radius of 2.5". PCS shall be constructed from ABS Plastic. PCS\_\_\_\_ (refer to chart) shall mount to \_\_\_\_\_. PCS shall include \_ spools (refer to chart). PCS-x-2H shall include 2 spools mounted to 2 space flanged panel constructed from 18-gauge steel. PCS shall be black. PCS shall comply with the requirements RoHS EU Directive 2002/95/EC. PCS shall be manufactured by an ISO 9001 and ISO 14001 registered company. PCS shall be warranted to be free from defects in material and workmanship under normal use and conditions for the lifetime of the product.

Customizable specification clips available at [middleatlantic.com](http://middleatlantic.com)



what **great systems** are built on.™

A Group brand | **legrand**

  
**Middle Atlantic Products**  
[middleatlantic.com](http://middleatlantic.com) | [middleatlantic.ca](http://middleatlantic.ca)

96-01116 / rev b / 10-28-14

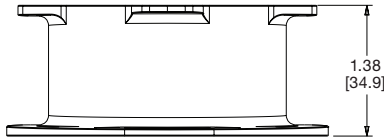
# PCS Series

## basic dimensions

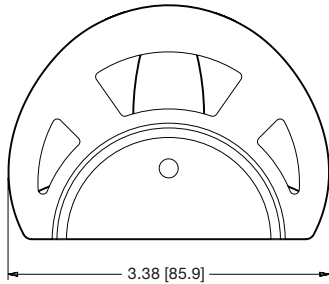
all dimensions in inches unless otherwise noted [all dimensions in brackets are in millimeters]

PCS

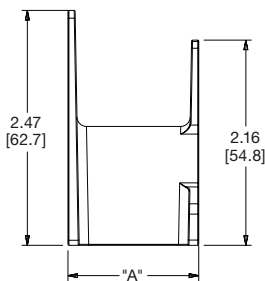
top view



front view



side view

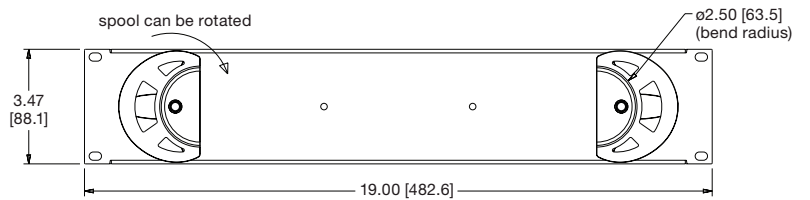


PCS-x-2H

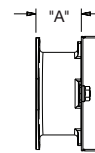
top view



front view



side view



Part #	"A" Depth	Quantity	Mounting
PCS-1-4	1.38 [34.9]	4 pieces	mounting hole
PCS-3-4	3.00 [76.2]	4 pieces	mounting hole
PCS-1-2H	1.38 [34.9]	2 pieces on 1 panel	rackrail
PCS-3-2H	3.00 [76.2]	2 pieces on 1 panel	rackrail

what **great systems** are built on.™