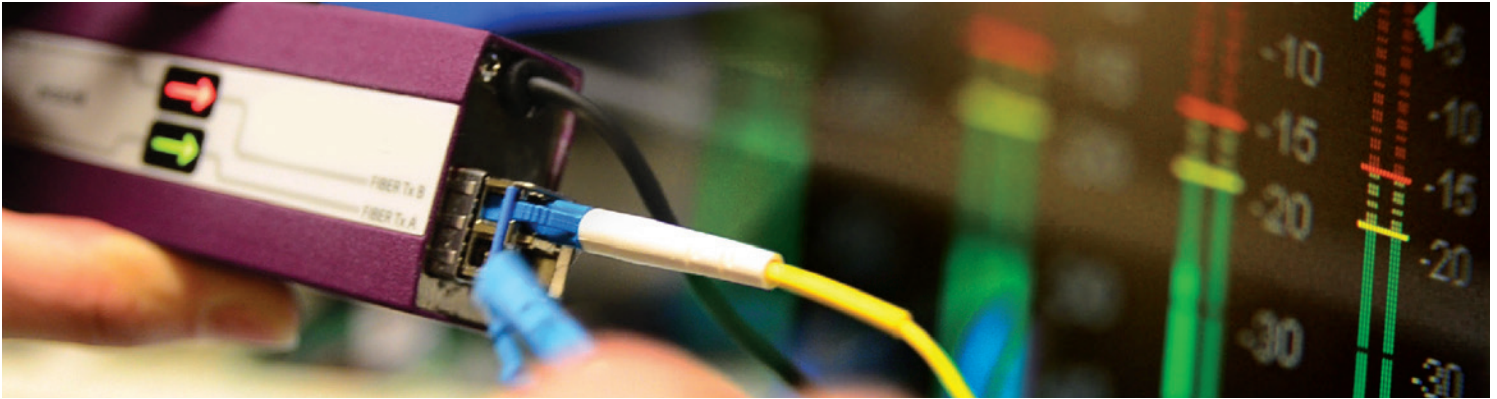


PicoLink Accessories

PicoLink Series Power Supplies and Frame Options



PicoLink Series power supplies and frame options.

The picoLink Series of interfaces from Grass Valley, a Belden Brand, feature a range of accessories including power supplies and adapters as well as a rack mount frame option.

KEY FEATURES

Simplify installation and maintenance

- LKS-WSU Universal power supply

Plug-in power supply for 110V or 220V

- picoPA 12 V to 5 V power adaptor
- Allows picoLinks to be powered on-set with regular 12V camera power supply and battery belt

- Rack mount frame option
- The pL-Tray provides easy mounting for up to 10 picoLinks with 40W redundant power capacity

SDM-power cable

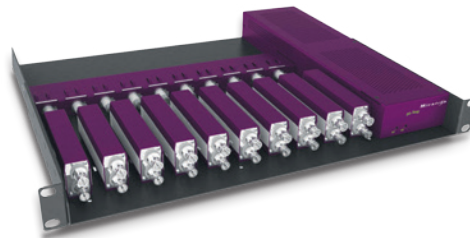
- Allows the SDM-873p and -874p to be powered by the pL-Tray



LKS-WSU Universal power supply



picoPA 12V to 5V power adaptor



Rack mount frame option



SDM-power cable

SPECIFICATIONS

Full spec. temp. range: 0-30° C (32-86° F)

Power: 5W maximum

Voltage requirement: +5 VDC ±2 %

Power connector: Mini XLR-3

ORDERING

Options	Description
LKS-WSU	Power supply for 110V or 220V
PICO-PA	12V to 5V power adaptor for picoLinks
pL-Tray	40W rack mounted tray for up to 10 picoLinks
SDM-Power Cable	SDM-873p/874p to pL-Tray power cable

GVB-1-0246A-EN-DS