

## FMCA3400 • Raised Access Floor Box



The UL and cUL Listed FMCA3400 raised access floor box combines flexibility, ease of installation, high capacity, and long-term value in an economical floor box assembly.

Proprietary modular panel design accommodates a wide variety of AV connectors, active devices, and barrier separated AC power.

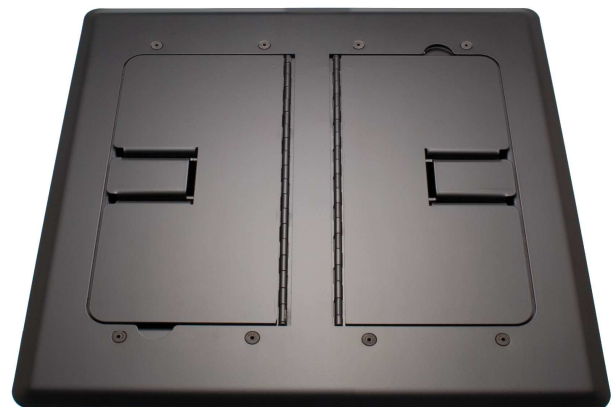
The concrete rated rough-in box includes alignment labeling and detailed installation instructions for rough-in installation above grade.

Unique design and 12 gauge cover supports loads in excess of the 300lb UL standard.

Ideal for classrooms, houses of worship, conference rooms, courtrooms, performance venues or anywhere connections are needed in the floor.

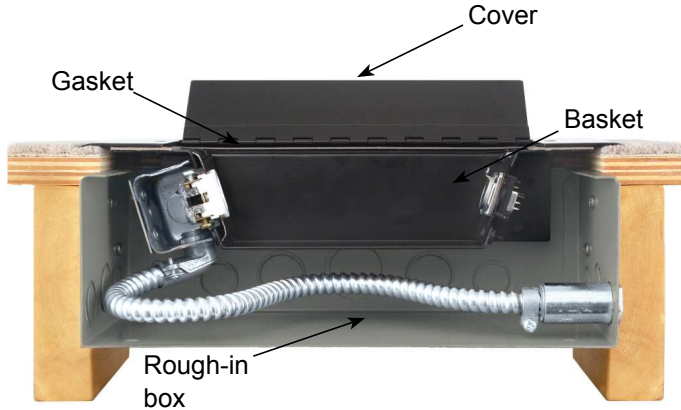
The attractive design and finish allows for the FMCA3400 to also be used for in-wall applications.

- **Attractive satin black 12 gauge scratch resistant cover with powder coated finish**
- **Accepts all ModuLine Insert Panels (up to 16 XLR type connectors, active devices or duplex power)**
- **Cable Door allows large cables up to 1.25" O.D.**
- **Self-trimming cover installs on top of carpet or hard surface**
- **Accommodates Decora®, AAP®, and MAAP® active devices**
- **Options include:**
  - Pre-punched insert panels
  - Duplex power module, UL Listed
  - Rough-in box
  - HandHold basket
  - Connector loading
  - Labeling and more



## FMCA3400 • additional details

### Cutaway view



### FMCA3400 assembly includes:

- Hinged Cover
- Carrier Bracket
- Integral Basket (2ea.)
- Cover Gasket (2ea.)
- Mounting Hardware

Order Rough-in box and Moduline Insert Panels separately

Heavy duty construction to withstand abuse

Integral basket hides construction rough-in box from view - provides finished installation

Full two year warranty

### Dimensional data (nominal)

Door/Cover: 14"L x 14"W

Basket: 10.5"L x 10.75"W x 2.5"D  
(without rough-in box)

## Rough-in box for FMCA3400 • order separately



**BB3000**  
12<sup>1/2</sup>"x12"x4"  
w/ 1/2" & 3/4"  
3/4" & 1" and  
1" & 1 1/4" combo  
knockouts



**BB3000D**  
12<sup>1/2</sup>"x12"x6"  
w/ 1/2" & 3/4"  
3/4" & 1" and  
1" & 1 1/4" combo  
knockouts



## A&E specification

**FMCA3400 - Satin Black (ceramic powder coated) w/ Self-trimming Cover, 2ea 1.25" x 1.25" hinged Cable Door**  
Floor box assembly shall consist of a Door / Cover with hinged door opening, 2ea. Gaskets, 2ea. Baskets and Carrier Bracket. Door / Cover shall be of 12 gauge steel, shall measure 14"L x 14"W, shall be self-trimming, mount virtually flush with the floor or surrounding surface and shall be secured with security socket head screws. Door / Cover shall have hinged Cable Door 1.25" x 1.25", shall have radiused corners and shall have a ceramic plastic satin black finish so as not to create specular light reflections. Baskets shall be of 16 gauge steel and shall be 10.5"L x 10.75"W x 2.5" deep. Baskets shall mount on manufacturer's backbox BB3000 or BB3000D. Baskets shall accommodate (4ea) ModuLine Insert Panels or (4ea) MPR (duplex power module) or a combination thereof. ModuLine Insert Panels shall be of 14 gauge steel and shall accommodate \_\_\_ (specify quantity) connectors and shall be removable for installation and service without disassembling Cover, Gasket or Baskets. All components shall be UL Listed and conform to all applicable standards of the National Electrical Code. Floor box assembly shall be Mystery Electronics FMCA3400.

## Moduline Insert Panels\*



MPK - XLR Type    MPP - Decora    MP8 - Blank    MPQ - Data    MPL - MAAP    MPU - MAAP    MPJ - AAP    MPC - Custom    MPR - Duplex

\*For greater flexibility, MPK, MPM and MPU accept all Mystery Electronics FlexiConn system connectors. Consult website for additional panel offerings.

### Important Note:

Mystery Electronics backboxes are UL® Listed and conform to all applicable N.E.M.A. Standards. While locally available boxes may seem acceptable as substitutes, there are differences in certain critical dimensions. For a fast and easy installation and to avoid costly onsite rework, the user is strongly cautioned to use only Mystery Electronics backboxes. They are proven to be the lowest cost alternative.

floor box solutions since 1979

**MYSTERY**  
ELECTRONICS, LLC

6438 Morton Road  
Greenbrier, TN 37073  
800 798 2256 sales  
615 643 8460 voice  
615 643 8464 fax

sales@mysteryelectronics.com

EB-A17-00