

INJECTION MOLDED CASES - PELICAN LIMITED LIFETIME GUARANTEE OF EXCELLENCE

Pelican Products, Inc. guarantees its products for a lifetime against breakage or defects in workmanship. Pelican™ injection molded cases are guaranteed to be watertight to a depth of 3.3 feet (1 meter) for 30 minutes (IP 67) if properly closed with undamaged o-ring in place unless otherwise stated. To the extent permitted by law, Pelican's liability is limited to the case and not its contents or foam. All warranty claims of any nature are barred if the container has been altered, damaged or in any way physically changed, or subjected to abuse, misuse, negligence or accident.

In Australia: www.pelican.com/warranty/australia

For complete warranty details, see <http://www.pelican.com/warranty>

Lifetime Guarantee does not cover Roto Molded cases.

U.S.A.

CALIFORNIA

23215 Early Avenue
Torrance, CA 90505
Tel: 310.326.4700
800.473.5422
Fax: 310.326.3311
www.pelican.com

MASSACHUSETTS

147 North Main Street
South Deerfield, MA 01373
Tel: 800.542.7344
Fax: 413.665.8330
www.pelican.com

INTERNATIONAL

EUROPE, MIDDLE EAST AND AFRICA

Peli Products, S.L.U.
c/ Provença, 388, Planta 7
Barcelona, Spain, 08025
Tel: +34.934.674.999
Fax: +34.934.877.393
www.peli.com

JAPAN

Pelican Products K.K.
Nisso 22 Bldg 9F
1-11-10 Azabu Dai
Minato ward Tokyo
Japan 106-0041
Tel: +81.33.585.9100
Fax: +81.33.585.9109
www.pelican.com/jp

CANADA

Pelican Products ULC
10221-184th Street
Edmonton, Alberta
T5S 2J4, Canada
Tel: +780.481.6076
Fax: +780.481.9586
www.pelican.ca

AUSTRALIA

Pelican Products Pty Ltd
West Wing, Platinum Building, Suite 2.33
4 Ilya Av
Erina NSW 2250
Tel: +612.4367.7022
Fax: +612.4367.7066
www.pelicanaustralia.com

CHINA

Pelican Products China Representative Office
Pine City Building, Room 1026
777 Zhaojiabang Road
Shanghai, China 200032
Tel: +86.21.64189685
Fax: +86.21.64189679
www.pelican.com/cn

KOREA

Pelican Products Korea Ltd
#909 Hyundai 41 Tower, #2616
917-9, Mok-dong, Yangchon-gu, Seoul, Korea 158-050
Tel: +82.2.6092.4700
Fax: +82.2.6739.4700
www.pelican.com/ko

INDIA and SOUTH ASIA

(Bangladesh, Bhutan, Maldives, Nepal, Sri Lanka)
Pelican Products and Services India Pvt. Ltd.
GF 9&10, Augusta Point
Sector-53, Golf Course Road
Haryana, Gurgaon 122002, India
Tel: +91.124.4377227
Fax: +91.124.4049227
www.pelican.com

SE ASIA and rest of ASIA

(Hong Kong, Macau, Taiwan, Pakistan)
No.777, Pine City Building ZhaoJiaBang Road
#10-26 XuHui District
Shanghai, China 200032
Phone: +86.21.64189685
Fax: +86.21.64189679
www.pelican.com

LATIN AMERICA

23215 Early Avenue
Torrance, California 90505 USA
Tel: +1.310.326.4700 x 1462
Fax: +1.310.325.5740
www.pelican.com



DISTRIBUTED BY:

©2017 Pelican Products, Inc. All trademarks are registered and/or unregistered trademarks of Pelican Products, Inc., its subsidiaries and/or affiliates. iPhone®, iPad®, iPod® and Smart Cover® are registered trademarks of Apple Inc. VELCRO® is a registered trademark of Velcro Industries B.V. Mylar® is a registered trademark of E.I. du Pont de Nemours and Company. TrekPak is registered trademark of TrekPak, Inc. Ultrabook™ is a trademark of Intel. MITUTOYO™ is a registered trademark of Bukkyo Dendo Kyokai, a Japanese company.



Part No. 0030-000-300 AU/17



WATERTIGHT PROTECTOR™ CASES
CASE CATALOG
AUGUST 2017



SINCE 1976

AUGUST 2017



DEAR CUSTOMER,

If you've ever owned a Pelican Protector™ case, you are already familiar with our legendary toughness and quality.

In my role at Pelican I've listened with great pride to many amazing stories of our cases in action - withstanding shifting glaciers, IED explosions and Silverback gorillas. These stories and associated pictures are just too good not to share, so we've featured the best in this catalog and many more at <http://www.pelican.com/info/media-testimonials/>. Please log in to share your own incredible stories.

On the new product front, we've been very busy and are excited to share our latest innovations including extreme coolers, luggage and iPad®/iPhone®-specific cases, just to name a few. To see our up-to-the-minute product introductions, visit www.pelican.com or follow us on our social media channels.

And finally, Pelican couldn't have become the global company that it is today without the loyalty of our customers (soldiers, firefighters, police officers, photographers and sportsmen), as well as our many other new customers (consumers and outdoor enthusiasts) who depend on our products every day. Please know that we will continue to honor that trust by developing the toughest and most dependable cases on the market.

Again, thank you for placing your trust in Pelican for your equipment protection needs.

CEO and President
Lyndon Faulkner

MARKETS SERVED //

FIRE
MILITARY
INDUSTRIAL
LAW ENFORCEMENT
OUTDOOR
CONSUMER
DIVE

PELICAN AIR SERIES

AIR CASES page 1-4



MEMORY CARD & MICRO CASES pages 5-6



SMALL CASES page 7



DIGITAL SURVIVAL CASES pages 8-10



MEDIUM CASES pages 11-12



MEDIUM CASES pages 11-12



LARGE CASES pages 13-16



LARGE CASES pages 13-16



LONG CASES pages 17-18



LONG CASES pages 17-18



CASE CONTENTS NOT INCLUDED

PELICAN STORM SERIES

SMALL CASES pages 23-24



MEDIUM CASES pages 25-26



LARGE CASES pages 27-28



LARGE CASES pages 27-28



LARGE CASES pages 27-28



CASE CONTENTS NOT INCLUDED

CHOICE

With hundreds of case sizes and options available, we have the widest range of standard configurations in the industry.



STANDARD ACCESSORIES

Casters	Edge Casters (standard on MAC with 5" lid)	Caster Storage in Lid	Metal or Comfort Grip Handles	Extra Handles	Card Holders	ID Plates	Front Labels	Standard Labels
Custom Stenciling	Airtight/Watertight Valves	Coupling Catches	Humidity Indicators	Lid Hangers	Lid Storage Pouches	Lift Rings/Tie Down Rings	Leg Kit Chair or Tables	Lockable Cable Catches (1 set of 4 ea)

OPTIONAL COLORS FOR ALL SINGLE LID CASES

Gray - 133 Fed Std# 26270	Tan - 250 Fed Std# 20372	Blue - 135(lt) Pantone# 292U	White - 132 Fed Std# 27925	Yellow - 136 Pantone# 012U	Green - 138(forest) Fed Std# 24052	Orange - 134 Fed Std# 12197
Yellow - 131 Fed Std# 23538	Maroon - 197 Pantone# 202U	Blue - 101(dk) Fed Std# 25052	Black - 032 Fed Std# 27040	Red - 130 Fed Std# 21105	Olive Drab - 137 Fed Std# 34096	Purple - 129 Pantone# 245U

Note: Some options are not available on all case sizes and availability is subject to change at manufacturer's discretion. Case colors/options may differ slightly from printed versions.

CASE CONTENTS NOT INCLUDED

PELICAN SERIES

PRODUCT LINE OVERVIEW

ALSO FROM PELICAN



TABLE OF CONTENTS

PELICAN AIR SERIES	1-4
PELICAN PROTECTOR SERIES	
Memory Card & Micro Cases	5-6
Small Cases	7
Digital Survival Cases	8-10
Medium Cases	11-12
Large Cases	13-16
Long Cases	17-18
Pelican Cases Specifications	19-20
SURVIVOR STORIES	21-22
PELICAN STORM SERIES	
Small Cases	23-24
Medium Cases	25-26
Large Cases	27-28
Pelican Storm Case Specifications	29
CUSTOM SOLUTIONS	
Case Accessories	30
Standard Protection	31-34
Custom Case Solutions	35-36
Custom Foam	37-38
Beyond Foam	39-40
Also From Pelican	41-42

www.pelican.com



PELICAN™ AIR

THE LIGHTEST PROTECTOR CASES ON THE PLANET.

At up to 40% lighter than other polymer cases, Pelican™ Air cases will lighten the loads of the dedicated pros around the world who have set out to change the game.

Pelican™ Air cases are the first in a series of remarkable innovations engineered by Pelican, the pioneers of protective cases. For over 40 years Pelican has manufactured the most influential protective cases in the world, and we're just getting started.

With the launch of the Pelican™ Air line of cases, we're redefining the future of protection with a remarkable union of light and tough.

THE SCIENCE BEHIND LIGHTNESS

- Honeycomb structural elements that are actually stronger than solid polymer material
- Molded from the next generation of Pelican's lightweight HPX™ resin, a proprietary formula that rebounds without breaking

UP TO THE TEST

- Submerged for 30 minutes at a depth of one meter
- Drop-tested on concrete (with loads from six feet) on all sides and corners
- Wheels are roll tested over 1,000 yards with loads at 5 mph
- 28 lb. steel dart dropped on all sides from 3 feet

Look for this icon for wheels on select models.



New Deep Sizes

1485 AIR

INTERNAL DIMS:
17.75" x 10.18" x 6.15"
(45.1 x 25.9 x 15.6 cm)

EXTERNAL DIMS:
19.17" x 12.80" x 6.89"
(48.7 x 32.5 x 17.5 cm)



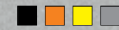
Cat. No. 1485**
Cat. No. 1485NF***
Cat. No. 1485WD****
Cat. No. 1485TP*****



1525 AIR

INTERNAL DIMS:
20.50" x 11.30" x 6.75"
(52.1 x 28.7 x 17.1 cm)

EXTERNAL DIMS:
21.96" x 13.97" x 7.49"
(55.8 x 35.5 x 19 cm)



Cat. No. 1525**
Cat. No. 1525NF***
Cat. No. 1525WD****
Cat. No. 1525TP*****

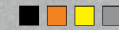


1535 AIR WHEELED CARRY-ON



INTERNAL DIMS:
20.39" x 11.20" x 7.20"
(51.8 x 28.4 x 18.3 cm)

EXTERNAL DIMS:
21.96" x 13.97" x 8.98"
(55.8 x 35.5 x 22.8 cm)



Cat. No. 1535**
Cat. No. 1535NF***
Cat. No. 1535WD****
Cat. No. 1535TP*****



1555 AIR

INTERNAL DIMS:
23.00" x 12.75" x 7.50"
(58.4 x 32.4 x 19.1 cm)

EXTERNAL DIMS:
24.76" x 15.46" x 8.24"
(62.9 x 39.3 x 20.9 cm)



Cat. No. 1555**
Cat. No. 1555NF***
Cat. No. 1555WD****
Cat. No. 1555TP*****



1557 AIR

INTERNAL DIMS:
17.33" x 13.00" x 9.75"
(44.0 x 33.0 x 24.8 cm)

EXTERNAL DIMS:
19.18" x 15.79" x 10.50"
(48.7 x 40.1 x 26.7 cm)



Cat. No. 1557**
Cat. No. 1557NF***
Cat. No. 1557WD****
Cat. No. 1557TP*****



1605 AIR

INTERNAL DIMS:
26.00" x 14.00" x 8.38"
(66 x 35.6 x 21.3 cm)

EXTERNAL DIMS:
28.87" x 16.77" x 9.12"
(73.3 x 42.6 x 23.2 cm)



Cat. No. 1605**
Cat. No. 1605NF***
Cat. No. 1605WD****
Cat. No. 1605TP*****



1607 AIR



INTERNAL DIMS:
21.05" x 15.81" x 11.63"
(53.5 x 40.2 x 29.5 cm)

EXTERNAL DIMS:
24.13" x 18.80" x 13.25"
(61.3 x 47.8 x 33.7 cm)



Cat. No. 1607**
Cat. No. 1607NF***
Cat. No. 1607WD****



1615 AIR WHEELED CHECK-IN



INTERNAL DIMS:
29.59" x 15.50" x 9.38"
(75.2 x 39.4 x 23.8 cm)

EXTERNAL DIMS:
32.58" x 18.40" x 11.02"
(82.8 x 46.7 x 28 cm)



Cat. No. 1615**
Cat. No. 1615NF***
Cat. No. 1615WD****
Cat. No. 1615TP*****



1637 AIR



INTERNAL DIMS:
23.43" x 17.55" x 13.25"
(59.5 x 44.6 x 33.7 cm)

EXTERNAL DIMS:
26.61" x 20.65" x 14.87"
(67.6 x 52.5 x 37.8 cm)



Cat. No. 1637**
Cat. No. 1637NF***
Cat. No. 1637WD****



MEMORY CARD & MICRO CASES

From small sensitive components to smartphones, protect your gear from the elements in a Memory Card Case or Micro Case from Pelican.

- WATER RESISTANT SEAL
- LIGHTWEIGHT INSERT LINER ABSORBS SHOCK AND PROTECTS MEMORY CARDS
- MADE OF TOUGH POLYCARBONATE RESIN

0915 CASE

INTERNAL DIMS:
4.79" x 2.25" x 0.55"
(12.2 x 5.7 x 1.4cm)

EXTERNAL DIMS:
5.55" x 3.27" x 0.85"
(14.1 x 8.3 x 2.2cm)

Cat. No. 0915
Stores 12 SD cards or
6 mini SD cards and
6 micro SD cards



0945 CASE

INTERNAL DIMS:
4.79" x 2.25" x 0.55"
(12.2 x 5.7 x 1.4 cm)

EXTERNAL DIMS:
5.55" x 3.27" x 0.85"
(14.1 x 8.3 x 2.2 cm)

Cat. No. 0945
Stores 6 compact
flash cards



0955 CASE

INTERNAL DIMS:
4.79" x 2.25" x 0.55"
(12.2 x 5.7 x 1.4 cm)

EXTERNAL DIMS:
5.55" x 3.27" x 0.85"
(14.1 x 8.3 x 2.2cm)

Cat. No. 0955
Holds keys, ID,
cards and cash



1010 MICRO CASE

INTERNAL DIMS:
4.37" x 2.87" x 1.68"
(11.1 x 7.3 x 4.3 cm)

EXTERNAL DIMS:
5.88" x 4.06" x 2.12"
(14.9 x 10.3 x 5.4 cm)



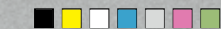
Cat. No. 1010
Available in clear with a colored rubber liner or in solid colors with a black rubber liner. Pick N Pluck™ foam inserts are available.



I1010 MICRO CASE

INTERNAL DIMS:
4.37" x 2.87" x 1.68"
(11.1 x 7.3 x 4.3 cm)

EXTERNAL DIMS:
5.88" x 4.06" x 2.12"
(14.9 x 10.3 x 5.4 cm)



Cat. No. i1010
Designed to protect iPod classic®, iPod nano®, and iPod shuffle®



EXTERNAL HEADPHONE JACK LETS YOU LISTEN TO YOUR PLAYER WHILE CASE IS CLOSED.

1015 MICRO CASE

INTERNAL DIMS:
5.14" x 2.64" x 1.37"
(13.1 x 6.7 x 3.5 cm)

EXTERNAL DIMS:
6.68" x 3.88" x 1.86"
(17 x 9.9 x 4.7 cm)



Cat. No. 1015
Available in clear with a colored rubber liner or in solid colors with a black rubber liner. Pick N Pluck™ foam inserts are available.



I1015 MICRO CASE

INTERNAL DIMS:
5.14" x 2.64" x 1.37"
(13.1 x 6.7x 3.5 cm)

EXTERNAL DIMS:
6.68" x 3.88" x 1.86"
(17x 9.9 x 4.7 cm)



Cat. No. i1015
Designed for iPhone™, iPhone™ 4 and iPod touch®



EXTERNAL HEADPHONE JACK LETS YOU LISTEN TO YOUR PLAYER WHILE CASE IS CLOSED.

1020 MICRO CASE

INTERNAL DIMS:
5.31" x 3.56" x 1.68"
(13.5 x 9 x 4.3 cm)

EXTERNAL DIMS:
6.82" x 4.75" x 2.12"
(17.3 x 12.1 x 5.4 cm)



Cat. No. 1020
Available in clear with a colored rubber liner or in solid colors with a black rubber liner. Pick N Pluck™ foam inserts are available.



1030 MICRO CASE

INTERNAL DIMS:
6.37" x 2.62" x 2.06"
(16.2 x 6.7 x 5.2)

EXTERNAL DIMS:
7.50" x 3.87" x 2.43"
(19 x 9.8 x 6.2 cm)



Cat. No. 1030
Available in clear with a colored rubber liner or in solid colors with a black rubber liner. Pick N Pluck™ foam inserts are available.



1040 MICRO CASE

INTERNAL DIMS:
6.50" x 3.87" x 1.75"
(16.5 x 9.8 x 4.4 cm)

EXTERNAL DIMS:
7.50" x 5.06" x 2.12"
(19 x 12.8 x 5.4 cm)



Cat. No. 1040
Available in clear with a colored rubber liner or in solid colors with a black rubber liner. Pick N Pluck™ foam inserts are available.



1050 MICRO CASE

INTERNAL DIMS:
6.31" x 3.68" x 2.75"
(16 x 9.3 x 7 cm)

EXTERNAL DIMS:
7.50" x 5.06" x 3.12"
(19 x 12.8 x 7.9 cm)



Cat. No. 1050
Available in clear with a colored rubber liner or in solid colors with a black rubber liner. Pick N Pluck™ foam inserts are available.



1060 MICRO CASE

INTERNAL DIMS:
8.25" x 4.25" x 2.25"
(20.9 x 10.8 x 5.7 cm)

EXTERNAL DIMS:
9.37" x 5.56" x 2.62"
(23.8 x 14.1 x 6.7 cm)



Cat. No. 1060
Available in clear with a colored rubber liner or in solid colors with a black rubber liner. Pick N Pluck™ foam inserts are available.



1075CC HARDBACK™ CASE

INTERNAL DIMS:
11.11" x 7.92" x 1.63"
(28.2 x 20.1 x 4.1 cm)

EXTERNAL DIMS:
12.38" x 9.75" x 2.13"
(31.4 x 24.8 x 5.4 cm)

Cat. No. 1075CC
(with netbook liner)
Designed to protect most popular netbooks up to 11.3" x 8.1" x 1.6"



i1075 HARDBACK™ CASE

INTERNAL DIMS:
11.11" x 7.92" x 1.63"
(28.2 x 20.1 x 4.1 cm)

EXTERNAL DIMS:
12.38" x 9.75" x 2.13"
(31.4 x 24.8 x 5.4 cm)

Cat. No. i1075
(with iPad® insert)
Designed to protect the iPad®, iPad®2 or iPad®2 with Smart Cover®



P1075 HARDBACK™ CASE

INTERNAL DIMS:
11.11" x 7.92" x 1.63"
(28.2 x 20.1 x 4.1 cm)

EXTERNAL DIMS:
12.38" x 9.75" x 2.13"
(31.4 x 24.8 x 5.4 cm)

Cat. No. P1075*
Designed to fit pistols, revolvers and magazines



1085 HARDBACK™ CASE

INTERNAL DIMS:
14.29" x 10.37" x 1.97"
(36.3 x 26.3 x 5 cm)

EXTERNAL DIMS:
15.64" x 12.41" x 2.50"
(39.7 x 31.5 x 6.3 cm)

Cat. No. 1085*
Designed to protect 14" laptops



1085CC HARDBACK™ CASE

INTERNAL DIMS:
14.29" x 10.37" x 1.97"
(36.3 x 26.3 x 5 cm)

EXTERNAL DIMS:
15.64" x 12.41" x 2.50"
(39.7 x 31.5 x 6.3 cm)

Cat. No. 1085CC
(with laptop liner)
Designed to protect 14" laptops



1095 HARDBACK™ CASE

INTERNAL DIMS:
15.78" x 11.16" x 2.06"
(40.1 x 28.3 x 5.2 cm)

EXTERNAL DIMS:
17.18" x 13.24" x 2.60"
(43.6 x 33.6 x 6.6 cm)

Cat. No. 1095*
Designed to protect 15" laptops



1095CC HARDBACK™ CASE

INTERNAL DIMS:
15.78" x 11.16" x 2.06"
(40.1 x 28.3 x 5.2 cm)

EXTERNAL DIMS:
17.18" x 13.24" x 2.60"
(43.6 x 33.6 x 6.6 cm)

Cat. No. 1095CC
(with laptop liner)
Designed to protect 15" laptops



EXTRA PROTECTION
Pelican's Pick N Pluck™ foam lets you customize the interior according to your gear. An easy, do-it-yourself system: layers of foam are pre-scored in tiny cubes. Simply measure your equipment over the grid and pluck away.



1470 CASE

INTERNAL DIMS:
15.70" x 10.70" x 3.87"
(39.9 x 27.2 x 9.8 cm)

EXTERNAL DIMS:
16.88" x 13.23" x 4.47"
(42.9 x 33.6 x 11.3 cm)

Cat. No. 1470**
Cat. No. 1470NF***



1490CC2 CASE

INTERNAL DIMS:
17.75" x 11.37" x 4.12"
(45.1 x 28.9 x 10.5 cm)

EXTERNAL DIMS:
19.87" x 13.93" x 4.68"
(50.4 x 35.4 x 11.9 cm)

Cat. No. 1490CC2
Case with lid organizer, Pick N Pluck™ foam, and removable shoulder strap



1495CC2 CASE

INTERNAL DIMS:
18.87" x 13.12" x 3.81"
(47.9 x 33.3 x 9.7 cm)

EXTERNAL DIMS:
21.62" x 17.25" x 4.87"
(54.9 x 43.8 x 12.4 cm)

Cat. No. 1495CC2
Case with lid organizer, Pick N Pluck™ foam, and removable shoulder strap



1490 CASE

INTERNAL DIMS:
17.75" x 11.37" x 4.12"
(45.1 x 28.9 x 10.5 cm)

EXTERNAL DIMS:
19.87" x 13.93" x 4.68"
(50.4 x 35.4 x 11.9 cm)

Cat. No. 1490**
Cat. No. 1490NF***



1495 CASE

INTERNAL DIMS:
18.87" x 13.12" x 3.81"
(47.9 x 33.3 x 9.7 cm)

EXTERNAL DIMS:
21.62" x 17.25" x 4.87"
(54.9 x 43.8 x 12.4 cm)

Cat. No. 1495**
Cat. No. 1495NF***



1430 TOP LOADER CASE

INTERNAL DIMS:
13.56" x 5.76" x 11.70"
(34.4 x 14.6 x 29.7 cm)

EXTERNAL DIMS:
16.40" x 8.71" x 13.15"
(41.6 x 22.1 x 33.4 cm)

Cat. No. 1430**
Cat. No. 1430NF***
Cat. No. 1434 (with padded divider and lid organizer)
Cat. No. 1437 (with padded office divider and lid organizer)



1490CC1 CASE

INTERNAL DIMS:
17.75" x 11.37" x 4.12"
(45.1 x 28.9 x 10.5 cm)

EXTERNAL DIMS:
19.87" x 13.93" x 4.68"
(50.4 x 35.4 x 11.9 cm)

Cat. No. 1490CC1
Case with lid organizer, fitted shock absorbing tray, and removable shoulder strap



1495CC1 CASE

INTERNAL DIMS:
18.87" x 13.12" x 3.81"
(47.9 x 33.3 x 9.7 cm)

EXTERNAL DIMS:
21.62" x 17.25" x 4.87"
(54.9 x 43.8 x 12.4 cm)

Cat. No. 1495CC1
Case with lid organizer, shock absorbing tray, nylon padded computer sleeve, accessories pouch, and removable shoulder strap



1440 TOP LOADER CASE

INTERNAL DIMS:
17.10" x 7.50" x 16.00"
(43.4 x 19 x 40.6 cm)

EXTERNAL DIMS:
19.70" x 12.00" x 18.00"
(50 x 30.5 x 45.7 cm)

Cat. No. 1440**
Cat. No. 1440NF***
Cat. No. 1444 (with utility padded divider and lid organizer)
Cat. No. 1447 (with padded office divider and lid organizer)



MEDIUM PROTECTOR CASES

Mobility with room for protecting larger gear or multiple instruments and accessories. Interior options are available for extra protection. Select models meet carry-on luggage specifications. Most cases are available empty, with foam or padded dividers. See chart on page 19.

Look for this icon for wheels on select models.

1450 CASE

INTERNAL DIMS:
14.66" x 10.24" x 6.12"
(37.2 x 26 x 15.5 cm)

EXTERNAL DIMS:
16.54" x 13.03" x 6.84"
(42 x 33.1 x 17.4 cm)

■ ■ ■ ■ ■ ■ *

Cat. No. 1450**
Cat. No. 1450NF***
Cat. No. 1454NF****



1460 CASE

INTERNAL DIMS:
18.54" x 9.92" x 10.92"
(47.1 x 25.2 x 27.7cm)

EXTERNAL DIMS:
20.85" x 12.73" x 12.75"
(52.9 x 32.3 x 32.4 cm)

■ ■ ■ ■ *

Cat. No. 1460**
Cat. No. 1460NF***
Cat. No. 1460AALG
Includes custom foam for 9430/9435



1460 TOOL CASE

INTERNAL DIMS:
18.54" x 9.92" x 10.92"
(47.1 x 25.2 x 27.7cm)

EXTERNAL DIMS:
20.85" x 12.73" x 12.75"
(52.9 x 32.3 x 32.4 cm)

■ ■ ■ ■ ■

Cat. No. 1460TOOL
Case with adjustable and removable tray dividers for easy customization



1460 EMS CASE

INTERNAL DIMS:
18.54" x 9.92" x 10.92"
(47.1 x 25.2 x 27.7 cm)

EXTERNAL DIMS:
20.85" x 12.73" x 12.75"
(52.9 x 32.3 x 32.4 cm)

■ ■ ■

Cat. No. 1460EMS
Case with custom configured lid organizer and trays for EMS professionals



1500 CASE

INTERNAL DIMS:
16.75" x 11.18" x 6.12"
(42.5 x 28.4 x 15.5 cm)

EXTERNAL DIMS:
18.50" x 14.06" x 6.93"
(47 x 35.7 x 17.6 cm)

■ ■ ■ ■ ■ ■ ■ *

Cat. No. 1500**
Cat. No. 1500NF***
Cat. No. 1504****



1500 EMS CASE

INTERNAL DIMS:
16.75" x 11.18" x 6.12"
(42.5 x 28.4 x 15.5 cm)

EXTERNAL DIMS:
18.50" x 14.06" x 6.93"
(47 x 35.7 x 17.6 cm)

■ ■ ■ ■ ■

Cat. No. 1500EMS
Case with custom configured lid organizer and trays for EMS professionals



1510 LOC CASE

INTERNAL DIMS:
19.75" x 11.00" x 7.60"
(50.1 x 27.9 x 19.3 cm)

EXTERNAL DIMS:
22.00" x 13.81" x 9.00"
(55.9 x 35.1 x 22.9 cm)

■ ■ ■ ■ *

Cat. No. 1510LOC
Case with fully enclosed apparel insert, padded laptop sleeve, and accessory pouch



1520 CASE

INTERNAL DIMS:
18.06" x 12.89" x 6.72"
(45.9 x 32.7 x 17.1 cm)

EXTERNAL DIMS:
19.78" x 15.77" x 7.41"
(50.2 x 40 x 18.8 cm)

■ ■ ■ ■ ■ ■ ■ *

Cat. No. 1520**
Cat. No. 1520NF***
Cat. No. 1524****
Cat. No. 1526
1520 Case with 1527 Convertible Travel Bag



1510 CASE

INTERNAL DIMS:
19.75" x 11.00" x 7.60"
(50.1 x 27.9 x 19.3 cm)

EXTERNAL DIMS:
22.00" x 13.81" x 9.00"
(55.9 x 35.1 x 22.9 cm)

■ ■ ■ ■ *

Cat. No. 1510**
Cat. No. 1510NF***
Cat. No. 1514NF****
Cat. No. 1510TP*****



1510 SC CASE

INTERNAL DIMS:
19.75" x 11.00" x 7.60"
(50.1 x 27.9 x 19.3 cm)

EXTERNAL DIMS:
22.00" x 13.81" x 9.00"
(55.9 x 35.1 x 22.9 cm)

■ ■ ■ ■ *

Cat. No. 1510SC
Case with padded dividers, padded laptop sleeve, and accessory pouch



1550 CASE

INTERNAL DIMS:
18.43" x 14.00" x 7.62"
(46.8 x 35.5 x 19.3 cm)

EXTERNAL DIMS:
20.62" x 16.87" x 8.12"
(52.4 x 42.8 x 20.6 cm)

■ ■ ■ ■ ■ ■ ■ *

Cat. No. 1550**
Cat. No. 1550NF***
Cat. No. 1554****
Cat. No. 1550TP*****



1510M CASE

INTERNAL DIMS:
19.75" x 11.00" x 7.60"
(50.1 x 27.9 x 19.3 cm)

EXTERNAL DIMS:
23.55" x 14.36" x 10.62"
(59.8 x 36.5 x 27 cm)

■

Cat. No. 1510M**
Cat. No. 1510MNF***
Mobility version features 2 oversized wheels for use on rough terrain



1510 LFC CASE

INTERNAL DIMS:
19.75" x 11.00" x 7.60"
(50.1 x 27.9 x 19.3 cm)

EXTERNAL DIMS:
22.00" x 13.81" x 9.00"
(55.9 x 35.1 x 22.9 cm)

■ ■ ■ ■ *

Cat. No. 1510LFC
Case with Pick N Pluck™ foam, padded laptop sleeve, and accessory pouch



1550 EMS CASE

INTERNAL DIMS:
18.43" x 14.00" x 7.62"
(46.8 x 35.5 x 19.3 cm)

EXTERNAL DIMS:
20.62" x 16.87" x 8.12"
(52.4 x 42.8 x 20.6 cm)

■ ■ ■ ■ ■

Cat. No. 1550EMS
Case with custom configured lid organizer and trays for EMS professionals



LARGE PROTECTOR CASES

Designed for extreme protection during transport and storage. Customizable interiors allow for extra protection and inventory control. Select models feature retractable handles, extra wide grips and sturdy casters for efficient mobility.

Look for this icon for wheels on select models.

STRONGER BY DESIGN

The Pelican Protector™ Case uses an open cell core and solid wall construction, which is actually stronger and lighter than a solid core wall. Travel light with heavy protection. And you know it's a Pelican™ Case by the distinctive dual band top surface. Stainless steel pins are used for hinges and handles. The Double-Throw latches are smarter and easier to open: it's the classic 'C' clamp design with a secondary movement that works like a pry bar to start the release and offers plenty of leverage to open with a light pull.

1560 CASE

INTERNAL DIMS:
19.92" x 14.98" x 9.00"
(50.6 x 38 x 22.9 cm)

EXTERNAL DIMS:
22.07" x 17.92" x 10.42"
(56 x 45.5 x 26.5 cm)

■ □ ▨ ▩ ■*

Cat. No. 1560**
Cat. No. 1560NF***
Cat. No. 1564****
Cat. No. 1560*****



1560M CASE

INTERNAL DIMS:
19.92" x 14.98" x 9.00"
(50.6 x 38 x 22.9 cm)

EXTERNAL DIMS:
23.78" x 18.33" x 12.08"
(60.4 x 46.5 x 30.7 cm)

■

Cat. No. 1560M**
Cat. No. 1560MNF***
Mobility version features 2 oversized wheels for use on rough terrain



1560LOC CASE

INTERNAL DIMS:
19.92" x 14.98" x 9.00"
(50.6 x 38 x 22.9 cm)

EXTERNAL DIMS:
22.07" x 17.92" x 10.42"
(56 x 45.5 x 26.5 cm)

■ □ ▨*

Cat. No. 1560LOC
Case with fully enclosed apparel insert, padded laptop sleeve, and accessory pouch



1560SC CASE

INTERNAL DIMS:
19.92" x 14.98" x 9.00"
(50.6 x 38 x 22.9 cm)

EXTERNAL DIMS:
22.07" x 17.92" x 10.42"
(56 x 45.5 x 26.5 cm)

■ □ ▨*

Cat. No. 1560SC
Case with padded dividers, padded laptop sleeve, and accessory pouch



1560LFC CASE

INTERNAL DIMS:
19.92" x 14.98" x 9.00"
(50.6 x 38 x 22.9 cm)

EXTERNAL DIMS:
22.07" x 17.92" x 10.42"
(56 x 45.5 x 26.5 cm)

■ □ ▨*

Cat. No. 1560LFC
Case with Pick N Pluck™ foam, padded laptop sleeve, and accessory pouch



1600 CASE

INTERNAL DIMS:
21.51" x 16.54" x 7.99"
(54.6 x 42 x 20.3 cm)

EXTERNAL DIMS:
24.39" x 19.36" x 8.79"
(61.9 x 49.2 x 22.3 cm)

■ □ ▨ ▩ ■*

Cat. No. 1600**
Cat. No. 1600NF***
Cat. No. 1604****
Cat. No. 1600TP*****



1600 EMS CASE

INTERNAL DIMS:
21.51" x 16.54" x 7.99"
(54.6 x 42 x 20.3 cm)

EXTERNAL DIMS:
24.39" x 19.36" x 8.79"
(61.9 x 49.2 x 22.3 cm)

■ □ ▨

Cat. No. 1600EMS
Case with custom configured lid organizer and trays for EMS professionals



TESTED.
The Pelican™ Case design is the result of multiple generations of refinement. This evolution is proven through submergence and other lab tests.

1610 CASE

INTERNAL DIMS:
21.78" x 16.69" x 10.62"
(55.3 x 42.4 x 27 cm)

EXTERNAL DIMS:
24.83" x 19.69" x 11.88"
(63 x 50 x 30.2 cm)



Cat. No. 1610**
Cat. No. 1610NF***
Cat. No. 1614****
Cat. No. 1610TP*****



1610M CASE

INTERNAL DIMS:
21.78" x 16.69" x 10.62"
(55.3 x 42.4 x 27 cm)

EXTERNAL DIMS:
26.20" x 23.00" x 13.68"
(66.5 x 58.4 x 34.7 cm)



Cat. No. 1610M**
Cat. No. 1610MNF***
Mobility version features 2 oversized wheels for use on rough terrain



1620 CASE

INTERNAL DIMS:
21.48" x 16.42" x 12.54"
(54.5 x 41.7 x 31.8 cm)

EXTERNAL DIMS:
24.76" x 19.57" x 13.90"
(62.9 x 49.7 x 35.3 cm)



Cat. No. 1620**
Cat. No. 1620NF***
Cat. No. 1624****



1690 CASE

INTERNAL DIMS:
30.13" x 25.13" x 15.36"
(76.5 x 63.8 x 39 cm)

EXTERNAL DIMS:
33.43" x 28.40" x 17.65"
(84.9 x 72.1 x 44.8 cm)



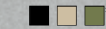
Cat. No. 1690**
Cat. No. 1690NF***
Cat. No. 1694****



1730 CASE

INTERNAL DIMS:
34.00" x 24.00" x 12.50"
(86.3 x 60.9 x 31.7 cm)

EXTERNAL DIMS:
37.05" x 27.20" x 14.37"
(94.1 x 69.1 x 36.5 cm)



Cat. No. 1730**
Cat. No. 1730NF***



1780 CASE

INTERNAL DIMS:
41.12" x 21.54" x 14.88"
(104.4 x 54.7 x 37.8 cm)

EXTERNAL DIMS:
44.90" x 25.32" x 16.50"
(114 x 64.3 x 41.9 cm)



Cat. No. 1780**
Cat. No. 1780NF***



1620M CASE

INTERNAL DIMS:
21.48" x 16.42" x 12.54"
(54.5 x 41.7 x 31.8 cm)

EXTERNAL DIMS:
26.20" x 23.00" x 15.61"
(66.5 x 58.4 x 39.6 cm)



Cat. No. 1620M**
Cat. No. 1620MNF***
Mobility version features 2 oversized wheels for use on rough terrain



1630 CASE

INTERNAL DIMS:
27.70" x 20.98" x 15.50"
(70.3 x 53.3 x 39.4 cm)

EXTERNAL DIMS:
31.28" x 24.21" x 17.48"
(79.4 x 61.5 x 44.4 cm)



Cat. No. 1630**
Cat. No. 1630NF***
Cat. No. 1634****



1640 CASE

INTERNAL DIMS:
23.70" x 24.00" x 13.90"
(60.2 x 60.9 x 35.3 cm)

EXTERNAL DIMS:
27.20" x 27.50" x 16.30"
(69.1 x 69.8 x 41.4 cm)



Cat. No. 1640**
Cat. No. 1640NF***
Cat. No. 1644****



0340 CASE

INTERNAL DIMS:
18.00" x 18.00" x 18.00"
(45.7 x 45.7 x 45.7 cm)

EXTERNAL DIMS:
20.50" x 20.50" x 19.25"
(52 x 52 x 48.9 cm)



Cat. No. 0340**
Cat. No. 0340NF***
Cat. No. 0344****



0350 CASE

INTERNAL DIMS:
20.00" x 20.00" x 20.00"
(50.8 x 50.8 x 50.8 cm)

EXTERNAL DIMS:
22.50" x 22.43" x 21.25"
(57.1 x 56.9 x 54 cm)



Cat. No. 0350**
Cat. No. 0350NF***
Cat. No. 0354****



0370 CASE

INTERNAL DIMS:
24.00" x 24.00" x 24.00"
(60.9 x 60.9 x 60.9 cm)

EXTERNAL DIMS:
26.50" x 26.50" x 25.25"
(67.3 x 67.3 x 64.1 cm)



Cat. No. 0370**
Cat. No. 0370NF***
Cat. No. 0374****



PELICAN LARGE CASES

1650 CASE

INTERNAL DIMS:
28.57" x 17.52" x 10.62"
(72.5 x 44.5 x 27 cm)

EXTERNAL DIMS:
31.59" x 20.47" x 12.45"
(80.2 x 52 x 31.6 cm)



Cat. No. 1650**
Cat. No. 1650NF***
Cat. No. 1654****
Cat. No. 1650TP*****



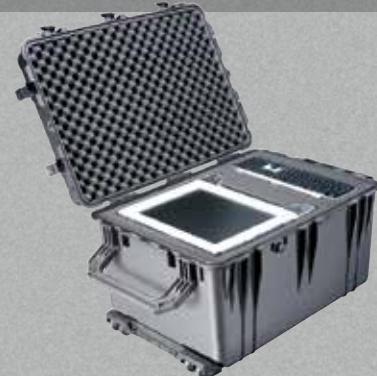
1660 CASE

INTERNAL DIMS:
28.20" x 19.66" x 17.63"
(71.6 x 49.9 x 44.8 cm)

EXTERNAL DIMS:
31.59" x 22.99" x 19.48"
(80.2 x 58.4 x 49.5 cm)



Cat. No. 1660**
Cat. No. 1660NF***
Cat. No. 1664****



1670 CASE

INTERNAL DIMS:
28.10" x 16.49" x 9.19"
(71.3 x 41.9 x 23.3 cm)

EXTERNAL DIMS:
31.04" x 19.39" x 11.17"
(78.8 x 49.2 x 28.4 cm)



Cat. No. 1670**
Mobility design features 4 extra-wide wheels and 2 extra-wide handles



0450 CASE

INTERNAL DIMS:
Varies by drawer configuration

EXTERNAL DIMS:
23.95" x 14.75" x 17.95"
(60.8 x 37.5 x 45.6 cm)



Cat. No. 0450ND
(no drawers)
Cat. No. 0450WD
(with drawers)



0500 CASE

INTERNAL DIMS:
34.95" x 18.45" x 25.25"
(88.7 x 46.8 x 64.1 cm)

EXTERNAL DIMS:
39.95" x 23.45" x 28.65"
(101.4 x 59.5 x 72.7 cm)



Cat. No. 0500**
Cat. No. 0500NF***



0550 CASE

INTERNAL DIMS:
47.57" x 24.07" x 17.68"
(120.8 x 61.1 x 44.9 cm)

EXTERNAL DIMS:
51.05" x 27.54" x 22.79"
(129.6 x 69.9 x 57.9 cm)




Cat. No. 0550**
Cat. No. 0550NF***



SHOWN WITH OPTIONAL CASTER WHEELS

LONG PROTECTOR CASES

Ideal for weapons, but are also used by industrial workers for instruments and gear. Equipped with sturdy polyurethane wheels for ease of transport. All Long Cases are available empty or with solid foam (not Pick N Pluck™ foam). See chart on page 19.

 All Long Cases are equipped with wheels

1700 CASE



INTERNAL DIMS:
35.75" x 13.50" x 5.25"
(90.8 x 34.3 x 13.3 cm)

EXTERNAL DIMS:
38.12" x 16.00" x 6.12"
(96.8 x 40.6 x 15.5 cm)

■ ■ ■ *

Cat. No. 1700**
Cat. No. 1700NF***



1720 CASE



INTERNAL DIMS:
42.00" x 13.50" x 5.25"
(106.6 x 34.3 x 13.3 cm)

EXTERNAL DIMS:
44.37" x 16.00" x 6.12"
(112.7 x 40.6 x 15.5 cm)

■ ■ ■ *

Cat. No. 1720**
Cat. No. 1720NF***



1740 CASE



INTERNAL DIMS:
40.98" x 12.92" x 12.13"
(104 x 32.8 x 30.8 cm)

EXTERNAL DIMS:
44.16" x 16.09" x 14.00"
(112.1 x 40.9 x 35.5 cm)

■ ■ ■ *

Cat. No. 1740**
Cat. No. 1740NF***



1750 CASE



INTERNAL DIMS:
50.50" x 13.50" x 5.25"
(128.2 x 34.3 x 13.3 cm)

EXTERNAL DIMS:
53.00" x 16.00" x 6.12"
(134.6 x 40.6 x 15.5 cm)

■

Cat. No. 1750**
Cat. No. 1750NF***



1770 CASE



INTERNAL DIMS:
54.58" x 15.58" x 8.63"
(138.6 x 39.6 x 21.9 cm)

EXTERNAL DIMS:
57.42" x 18.48" x 11.23"
(145.8 x 46.9 x 28.5 cm)

■

Cat. No. 1770**
Cat. No. 1770NF***



1780HL CASE



INTERNAL DIMS:
41.12" x 21.54" x 14.88"
(104.4 x 54.7 x 37.8 cm)

EXTERNAL DIMS:
44.90" x 25.32" x 16.50"
(114 x 64.3 x 41.9 cm)

■ ■ ■ *

Cat. No. 1780HL
(rifle hard liner insert)
Cat. No. 1700RF
(rifle foam cut insert)



EASY RIDING

Stainless steel ball bearing wheels (on select cases) last longer and ride smoother. The nylon hub adjacent to the stainless steel resists heat. Result: less wear and tear on the polyurethane tire.



NYLON HUB

STAINLESS STEEL
BALL BEARING WHEELS

POLYURETHANE TIRE

SURVIVOR STORIES

SUPERSTORM PROOF

The plane hit with such force that it sheared the left wing and float right off and, as the plane rapidly sunk, everyone was able to escape out the exits. For over nine hours, the plane was submerged some 6-8 feet under water, loosely held to the right pontoon! When we were finally allowed to recover our gear, I was planning for the worst, because the water damage on impact had destroyed just about everyone's gear. But when I opened the lid on my Pelican™ 1650 case, I was astonished to find that there was very little water inside and everything was intact!

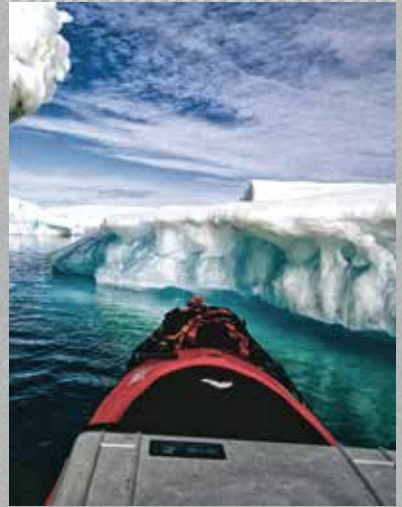
Tim Cothren



CRUSHED ICE OPTIONAL

We chose the best gear that we could get our hands on, including Pelican™ boxes to safeguard our camera gear, radios and satellite telephone. At 81° North latitude, one of our plastic kayaks, with a Pelican™ box mounted on deck, became caught in the current-driven ice pack and was thoroughly steamrolled. Many items loaded inside the kayak were crushed, but the Pelican™ deck box emerged through it all unscathed.

Steve Smith, Adventurer



PELICAN CAT-SNACK

On a recent trip through Zimbabwe the Pelican™ 1150 case became the prey of a member of the carnivore family. Shumba, less than a year old, pounced on the case and subjected it to its inch long canines. The Pelican™ case withstood its brush with the jaws of death and also the rock-bashing hike into the Zambezi valley and all the whitewater I encountered in the following weeks.

Ross O'Donoghue



THE HORSE HAS A LOT TO SAY...

During a long trekking expedition in Zaskar and Ladakh (in Northern India) we had all our stuff on horseback. About half way through the trip one of the horses overbalanced and fell from the track into the water. The horse was unhurt beyond a couple of scratches, but the case had been dragged underwater, banged on rocks for a good while and dragged out again. I opened the case and discovered that my Hasselblad®, my spare Nikon® body, several lenses, dozens of films and a DAT recorder and tapes for my audio work were all completely unharmed and dry!

Mike Harding, BBC presenter, travel, writer, poet, playwright. www.mikeharding.co.uk

TUNISIA RUINS SAVED

At remote ancient Roman ruins working on time-lapse astrophotography, packing the car at 04:00 am. A little later on a winding country road I notice that the rear trunk door is open and my Pelican™ Storm Case™ iM2370 is gone! OMG.

Driving back, swearing, looking left and right off the road to see the case (with all the production data and equipment worth 15K Euro). Soon after the gate lays the Pelican™ Storm Case™ iM2370, flat on the dirt road. Scratched and dusty, but it's a Pelican case. Nothing damaged inside, of course.

We are the happiest guys, now having an eye on the trunk door from then on. The production is safe again, with 3 TB of irreplaceable data, stored inside that Pelican™ Storm Case™ iM2370. My Pelican cases are always there for me, and this situation is exactly when they pay off!

Christoph Malin, April 2015, Austria



INTACT AFTER MASSIVE EXPLOSION

My team and I were first responders to a terrorist attack on a hotel in Islamabad, Pakistan. As part of our recovery effort at the blast site, we 'repatriated' one of our armored vehicles. Inside the vehicle, which was in the immediate impact zone of the SVBIED, we discovered an unscathed Pelican™ 1640 Transport Case. I've enclosed photos of the Pelican Case taken the day that we recovered it from the demolished vehicle. The case stood up against a massive explosion and flying shrapnel.

We gave the case back to its rightful owner, who thankfully was not in the vehicle at the time of the attack. Seeing how well this product withstood this type of abuse, I can say that you have found yourself several new lifetime customers!

US Federal Agent





PELICAN™ STORM CASE™

You've got equipment to protect, and a Pelican™ Storm Case™ has been engineered to do just that. How? It's all about the resin: our proprietary HPX® polymer is proven to resist impacts even in low-temperature laboratory testing. But the real proof is in the bragging rights that come with survival. Because to a Pelican™ Storm Case™, falling from a helicopter, crashing down Class V rapids or taking a hit in the center lane of the New Jersey turnpike is all in a day's work.



PELICAN™ STORM SMALL CASES

Perfect for small gear and instruments with all the features found in our larger cases: strong HPX™ resin construction, Vortex valve, and Press & Pull™ latches.

PRESS & PULL™ LATCHES

These smooth-opening, patented latches hold tight under pressure and impact with easy-opening performance. Tested to over 400lbs., yet open with a simple release button.



iM2050 CASE

INTERNAL DIMS:
9.50" x 7.50" x 4.25"
(24.1 x 19 x 10.8 cm)

EXTERNAL DIMS:
11.80" x 9.80" x 4.70"
(30 x 24.9 x 11.9 cm)



Cat. No. iM2050**
Cat. No. iM2050-X0000***
Cat. No. iM2050-X0002****



iM2075

INTERNAL DIMS:
9.50" x 7.50" x 7.25"
(24.1 x 19 x 18.4 cm)

EXTERNAL DIMS:
11.80" x 9.80" x 7.70"
(30 x 24.9 x 19.6 cm)



Cat. No. iM2075**
Cat. No. iM2075-X0000***
Cat. No. iM2075-X0002****



iM2100

INTERNAL DIMS:
13.00" x 9.20" x 6.00"
(33 x 23.4 x 15.2 cm)

EXTERNAL DIMS:
14.20" x 11.40" x 6.50"
(36.1 x 28.9 x 16.5 cm)




Cat. No. iM2100**
Cat. No. iM2100-X0000***
Cat. No. iM2100-X0002****



PELICAN™ STORM MEDIUM CASES

From firefighters, EMTs, outdoor enthusiasts, and law enforcement to industrial engineers and photographers, there's a Pelican™ Storm Case™ for every professional. Built strong in three standard configurations: Pick N Pluck™ foam, padded dividers (on select models) or empty.

Look for this icon  for wheels on select models.

iM2200 STORM CASE

INTERNAL DIMS:
15.00" x 10.50" x 6.00"
(38.1 x 26.7 x 15.2 cm)

EXTERNAL DIMS:
16.20" x 12.70" x 6.60"
(41.1 x 32.2 x 16.8cm)



Cat. No. iM2200**
Cat. No. iM2200-X0000***
Cat. No. iM2200-X0002****



MOLDED-IN LOCKABLE HASPS

Twin mating hasp holes on the rim of the case allow attachment of padlocks to keep your gear in and thieves out. And check out Pelican's TSA approved cable padlock. Now you can check your baggage with confidence while flying in the USA. The Travel Security Agency has the key, and you have the combination.



RUGGED IN-LINE WHEELS

Shielded from dust, dirt and other contaminants – ball bearing wheels provide low-friction, low-drag rolling with retractable handles for easy movement of heavy loads.



iM2275 STORM CASE

INTERNAL DIMS:
14.12" x 13.19" x 9.90"
(35.9 x 33.5 x 25.1 cm)

EXTERNAL DIMS:
15.25" x 15.50" x 10.22"
(38.7 x 39.4 x 26 cm)



Cat. No. iM2275**
Cat. No. iM2275-X0000***
Cat. No. iM2275-X0002****



iM2300 STORM CASE

INTERNAL DIMS:
17.00" x 11.70" x 6.20"
(43.2 x 29.7 x 15.7cm)

EXTERNAL DIMS:
18.20" x 13.40" x 6.70"
(46.2 x 34 x 17cm)



Cat. No. iM2300**
Cat. No. iM2300-X0000***
Cat. No. iM2300-X0002****



iM2306 STORM CASE

INTERNAL DIMS:
17.00" x 6.30" x 6.20"
(43.2 x 16 x 15.7cm)

EXTERNAL DIMS:
18.20" x 8.40" x 6.70"
(46.2 x 21.3 x 17cm)



Cat. No. iM2306**
Cat. No. iM2306-X0000***
Cat. No. iM2306-X0002****



iM2450 STORM CASE

INTERNAL DIMS:
18.00" x 13.00" x 8.40"
(45.7 x 33 x 21.3 cm)

EXTERNAL DIMS:
19.20" x 15.20" x 9.00"
(48.7 x 38.6 x 22.9 cm)



Cat. No. iM2450**
Cat. No. iM2450-X0000***
Cat. No. iM2450-X0002****



iM2500 STORM CASE

INTERNAL DIMS:
20.50" x 11.50" x 7.20"
(52 x 29.2 x 18.3 cm)

EXTERNAL DIMS:
21.70" x 14.10" x 8.90"
(55.1 x 35.8 x 22.6 cm)



Cat. No. iM2500**
Cat. No. iM2500-X0000***
Cat. No. iM2500-X0002****
Cat. No. iM2500-00006*****



iM2370 STORM LAPTOP CASE

INTERNAL DIMS:
18.20" x 12.10" x 5.20"
(46.2 x 30.7 x 13.2 cm)

EXTERNAL DIMS:
20.00" x 14.70" x 5.80"
(50.8 x 37.3 x 14.7 cm)



Cat. No. iM2370**
Cat. No. iM2370-X0000***
Cat. No. iM2370-X0002****
Cat. No. iM2370-X0003
(Computer Case Deluxe)



iM2400 STORM CASE

INTERNAL DIMS:
18.00" x 13.00" x 6.70"
(45.7 x 33 x 17 cm)

EXTERNAL DIMS:
19.20" x 15.20" x 7.30"
(48.7 x 38.6 x 18.5 cm)



Cat. No. iM2400**
Cat. No. iM2400-X0000***
Cat. No. iM2400-X0002****



iM2435 STORM CASE

INTERNAL DIMS:
17.50" x 6.50" x 15.50"
(44.4 x 16.5 x 39.4 cm)

EXTERNAL DIMS:
18.63" x 9.25" x 16.50"
(47.3 x 23.5 x 41.9 cm)



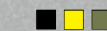
Cat. No. iM2435**
Cat. No. iM2435-X0000***
Cat. No. iM2435-X0002****
(includes lid organizer)



iM2600 STORM CASE

INTERNAL DIMS:
20.00" X 14.00" X 7.70"
(50.8 X 35.5 X 19.6 CM)

EXTERNAL DIMS:
21.20" X 16.00" X 8.30"
(53.8 X 40.6 X 21.1 CM)



Cat. No. iM2600**
Cat. No. iM2600-X0000***
Cat. No. iM2600-X0002****



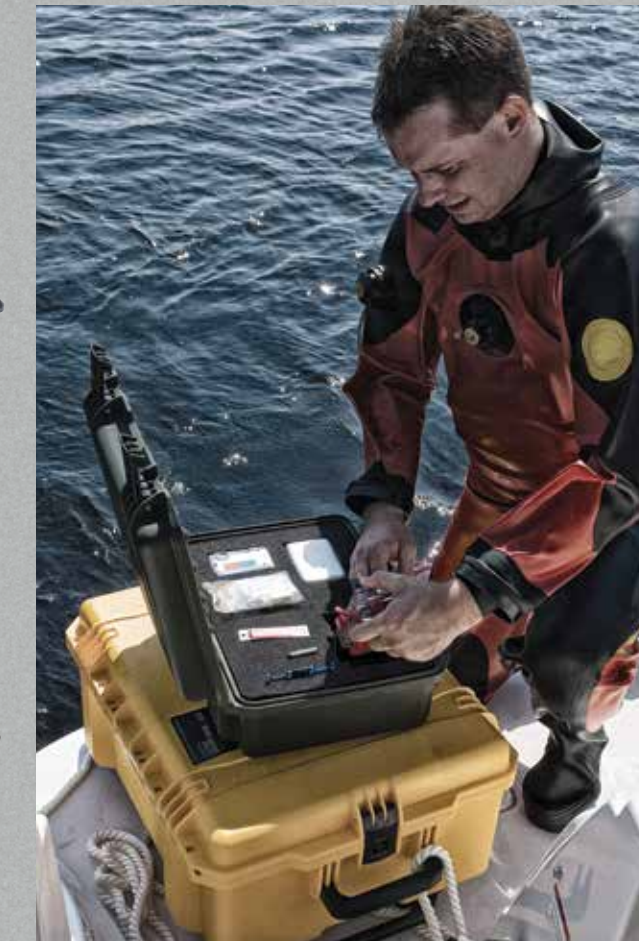
iM2620 STORM CASE

INTERNAL DIMS:
20.00" x 14.00" x 10.00"
(50.8 x 35.5 x 25.4 cm)

EXTERNAL DIMS:
21.20" x 16.00" x 10.60"
(53.8 x 40.6 x 26.9 cm)



Cat. No. iM2620**
Cat. No. iM2620-X0000***
Cat. No. iM2620-X0002****
Cat. No. iM2620-00006*****



PELICAN™ STORM LARGE CASES

In the lab or out in the field, a large Pelican™ Storm Case™ with HPX™ resin construction stores and protects valuable and sensitive equipment from the elements. Pick N Pluck™ foam adds extra protection from shock during transport.



iM2700 STORM CASE

INTERNAL DIMS:
22.00" x 17.00" x 8.00"
(55.9 x 43.2 x 20.3 cm)

EXTERNAL DIMS:
24.60" x 19.70" x 8.60"
(62.5 x 50 x 21.8 cm)

■ ■ ■
Cat. No. iM2700**
Cat. No. iM2700-X0000***
Cat. No. iM2700-X0002****



iM2720 STORM CASE

INTERNAL DIMS:
22.00" x 17.00" x 10.00"
(55.9 x 43.2 x 25.4 cm)

EXTERNAL DIMS:
24.60" x 19.70" x 11.70"
(62.5 x 50 x 29.7 cm)

■ ■ ■
Cat. No. iM2720**
Cat. No. iM2720-X0000***
Cat. No. iM2720-X0002****
Cat. No. iM2720-00006*****



iM3075 STORM CASE

INTERNAL DIMS:
29.80" x 20.80" x 17.80"
(75.7 x 52.8 x 45.2 cm)

EXTERNAL DIMS:
33.30" x 24.40" x 19.30"
(84.5 x 62 x 49 cm)

■ ■
Cat. No. iM3075**
Cat. No. iM3075-X0000***
Cat. No. iM3075-X0002****



iM3100 STORM CASE

INTERNAL DIMS:
36.50" x 14.00" x 6.00"
(92.7 x 35.5 x 15.2 cm)

EXTERNAL DIMS:
39.80" x 16.50" x 6.70"
(101.1 x 41.9 x 17 cm)

■ ■
Cat. No. iM3100**
Cat. No. iM3100-X0000***



iM3200 STORM CASE

INTERNAL DIMS:
44.00" x 14.00" x 6.00"
(111.7 x 35.5 x 15.2 cm)

EXTERNAL DIMS:
47.20" x 16.50" x 6.70"
(119.8 x 41.9 x 17 cm)

■ ■
Cat. No. iM3200**
Cat. No. iM3200-X0000***



iM2750 STORM CASE

INTERNAL DIMS:
22.00" x 17.00" x 12.70"
(55.9 x 43.2 x 32.2 cm)

EXTERNAL DIMS:
24.60" x 19.70" x 14.40"
(62.5 x 50 x 36.6 cm)

■ ■ ■
Cat. No. iM2750**
Cat. No. iM2750-X0000***
Cat. No. iM2750-X0002****



iM2875 STORM CASE

INTERNAL DIMS:
22.50" x 21.10" x 11.40"
(57.1 x 53.6 x 28.9 cm)

EXTERNAL DIMS:
24.90" x 23.70" x 13.10"
(63.2 x 60.2 x 33.3 cm)

■ ■
Cat. No. iM2870**
Cat. No. iM2870-X0000***
Cat. No. iM2870-X0002****

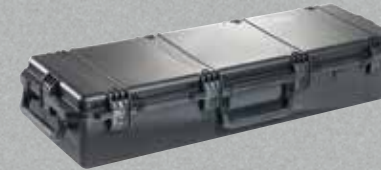


iM3220 STORM CASE

INTERNAL DIMS:
44.00" x 14.00" x 8.50"
(111.7 x 35.5 x 21.6 cm)

EXTERNAL DIMS:
47.20" x 16.50" x 9.20"
(119.8 x 41.9 x 23.4 cm)

■ ■
Cat. No. iM3220**
Cat. No. iM3220-X0000***



iM3300 STORM CASE

INTERNAL DIMS:
50.50" x 14.00" x 6.00"
(128.2 x 35.5 x 15.2 cm)

EXTERNAL DIMS:
53.80" x 16.50" x 6.70"
(136.6 x 41.9 x 17 cm)

■ ■
Cat. No. iM3300**
Cat. No. iM3300-X0000***



iM3300RFL STORM CASE

INTERNAL DIMS:
50.50" x 14.00" x 6.00"
(128.2 x 35.5 x 15.2 cm)

EXTERNAL DIMS:
53.80" x 16.50" x 6.70"
(136.6 x 41.9 x 17 cm)

■ ■
Cat. No. iM3300RFL**



iM2950 STORM CASE

INTERNAL DIMS:
29.00" x 18.00" x 10.50"
(73.6 x 45.7 x 26.7 cm)

EXTERNAL DIMS:
31.30" x 20.40" x 12.20"
(79.5 x 51.8 x 31 cm)

■ ■ ■
Cat. No. iM2950**
Cat. No. iM2950-X0000***
Cat. No. iM2950-X0002****
Cat. No. iM2950-00006*****



iM2975 STORM CASE

INTERNAL DIMS:
29.00" x 18.00" x 13.80"
(73.6 x 45.7 x 35 cm)

EXTERNAL DIMS:
31.30" x 20.40" x 15.50"
(79.5 x 51.8 x 39.4 cm)

■ ■
Cat. No. iM2975**
Cat. No. iM2975-X0000***
Cat. No. iM2975-X0002****



iM3300SGN STORM CASE

INTERNAL DIMS:
50.50" x 14.00" x 6.00"
(128.2 x 35.5 x 15.2 cm)

EXTERNAL DIMS:
53.80" x 16.50" x 6.70"
(136.6 x 41.9 x 17 cm)

■ ■
Cat. No. iM3300SGN**



iM3410 STORM CASE

INTERNAL DIMS:
54.50" x 10.00" x 6.00"
(138.4 x 25.4 x 15.2 cm)

EXTERNAL DIMS:
57.74" x 12.71" x 6.67"
(146.6 x 32.3 x 16.9 cm)

■ ■
Cat. No. iM3410**
Cat. No. iM3410-X0000***



DOUBLE-LAYER, SOFT-GRIP HANDLES

When the weather goes south you'll find a secure grip that won't slip. An in-tool vulcanizing process over-molds the grips to the polymer handle for a lifetime of dependable performance.



VORTEX® PRESSURE RELEASE VALVE

The built-in technology of Pelican Storm Cases automatic pressure equalization valve is also a patented feature. During air travel it prevents vacuum lock to make opening the case natural, even after extreme altitude changes. At the same time, the microscopic filter blocks water molecules and dust particles so your gear stays clean in the Gobi Desert and dry on the Nile River.



PELICAN™ STORM CASE™ SERIES SPECIFICATIONS

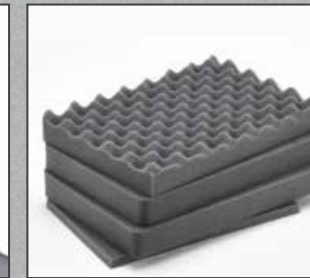
CAT.NO.	INTERIOR DIMENSIONS		EXTERIOR DIMENSIONS		COLORS
	inches	centimeters	inches	centimeters	
iM2050	9.50" x 7.50" x 4.25"	24.1 x 19 x 10.8	11.80" x 9.80" x 4.70"	30 x 24.9 x 11.9	■ ■ ■
iM2075	9.50" x 7.50" x 7.25"	24.1 x 19 x 18.4	11.80" x 9.80" x 7.70"	30 x 24.9 x 19.6	■ ■ ■
iM2100	13.00" x 9.20" x 6.00"	33 x 23.4 x 15.2	14.20" x 11.40" x 6.50"	36.1 x 28.9 x 16.5	■ ■ ■
iM2200	15.00" x 10.50" x 6.00"	38.1 x 26.7 x 15.2	16.20" x 12.70" x 6.60"	41.1 x 32.2 x 16.8	■ ■
iM2275	14.12" x 13.19" x 9.90"	35.9 x 33.5 x 25.1 cm	15.25" x 15.50" x 10.22"	38.7 x 39.4 x 26 cm	■ ■
iM2300	17.00" x 11.70" x 6.20"	43.2 x 29.7 x 15.7	18.20" x 13.40" x 6.70"	46.2 x 34 x 17	■ ■ ■
iM2306	17.00" x 6.30" x 6.20"	43.2 x 16 x 15.7	18.20" x 8.40" x 6.70"	46.2 x 21.3 x 17	■ ■
iM2370	18.20" x 12.10" x 5.20"	46.2 x 30.7 x 13.2	20.00" x 14.70" x 5.80"	50.8 x 37.3 x 14.7	■ ■
iM2400	18.00" x 13.00" x 6.70"	45.7 x 33 x 17	19.20" x 15.20" x 7.30"	48.7 x 38.6 x 18.5	■ ■ ■
iM2435	17.50" x 6.50" x 15.50"	44.4 x 16.5 x 39.4	18.63" x 9.25" x 16.50"	47.3 x 23.5 x 41.9	■ ■
iM2450	18.00" x 13.00" x 8.40"	45.7 x 33 x 21.3	19.20" x 15.20" x 9.00"	48.7 x 38.6 x 22.9	■ ■
iM2500	20.50" x 11.50" x 7.20"	52 x 29.2 x 18.3	21.70" x 14.10" x 8.90"	55.1 x 35.8 x 22.6	■ ■ ■
iM2600	20.00" x 14.00" x 7.70"	50.8 x 35.5 x 19.6	21.20" x 16.00" x 8.30"	53.8 x 40.6 x 21.1	■ ■ ■
iM2620	20.00" x 14.00" x 10.00"	50.8 x 35.5 x 25.4	21.20" x 16.00" x 10.60"	53.8 x 40.6 x 26.9	■ ■
iM2700	22.00" x 17.00" x 8.00"	55.9 x 43.2 x 20.3	24.60" x 19.70" x 8.60"	62.5 x 50 x 21.8	■ ■ ■
iM2720	22.00" x 17.00" x 10.00"	55.9 x 43.2 x 25.4	24.60" x 19.70" x 11.70"	62.5 x 50 x 29.7	■ ■ ■
iM2750	22.00" x 17.00" x 12.70"	55.9 x 43.2 x 32.2	24.60" x 19.70" x 14.40"	62.5 x 50 x 36.6	■ ■ ■
iM2875	22.50" x 21.10" x 11.40"	57.1 x 53.6 x 28.9	24.90" x 23.70" x 13.10"	63.2 x 60.2 x 33.3	■ ■
iM2950	29.00" x 18.00" x 10.50"	73.6 x 45.7 x 26.7	31.30" x 20.40" x 12.20"	79.5 x 51.8 x 31	■ ■ ■
iM2975	29.00" x 18.00" x 13.80"	73.6 x 45.7 x 35	31.30" x 20.40" x 15.50"	79.5 x 51.8 x 39.4	■ ■
iM3075	29.80" x 20.80" x 17.80"	75.7 x 52.8 x 45.2	33.30" x 24.40" x 19.30"	84.5 x 62 x 49	■ ■
iM3100	36.50" x 14.00" x 6.00"	92.7 x 35.5 x 15.2	39.80" x 16.50" x 6.70"	101.1 x 41.9 x 17	■ ■
iM3200	44.00" x 14.00" x 6.00"	111.7 x 35.5 x 15.2	47.20" x 16.50" x 6.70"	119.8 x 41.9 x 17	■ ■
iM3220	44.00" x 14.00" x 8.50"	111.7 x 35.5 x 21.6	47.20" x 16.50" x 9.20"	119.8 x 41.9 x 23.4	■ ■
iM3300	50.50" x 14.00" x 6.00"	128.2 x 35.5 x 15.2	53.80" x 16.50" x 6.70"	136.6 x 41.9 x 17	■ ■
iM3410	54.50" x 10.00" x 6.00"	138.4 x 25.4 x 15.2	57.74" x 12.71" x 6.67"	146.6 x 32.3 x 16.9	■ ■

CASE ACCESSORIES

From custom nameplates and padded shoulder straps, to TSA Locks and humidity indicators, Pelican offers a broad range of case accessories.



Lid Organizers



Replacement Foam Sets



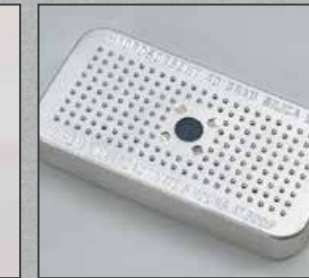
Padded Dividers



Shoulder Straps



TSA Locks



Peli Desiccant (Silica Gel)



Nameplates



Card Holders



Caster Wheel Kits



Pallet Risers



Peli™ Quick Mounts



Lid Stays

Refer to www.pelican.com for specific accessories available for each case model

PELICAN™ CASE STANDARD PROTECTION

Most Pelican™ Protector™ and Pelican™ Storm Cases are available empty, with foam or Padded Dividers. These configurations are available across our full line of injection molded cases and offer off-the-shelf protection solutions.

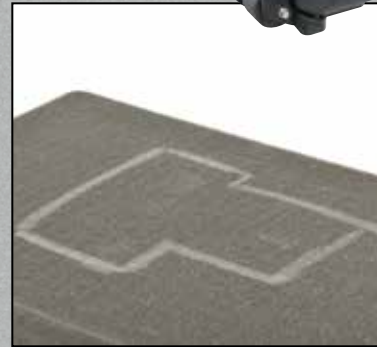


1670 case shown

PICK N PLUCK™ FOAM

An easy, do-it-yourself system for the interior of the case. Layers of foam are pre-scored in 1/2" or 1" cubes. Simply lay your equipment on the foam, tape or chalk to mark the foam, and pluck away. Always allow at least one inch of foam between your equipment and the case wall.

We offer replacement foam sets online at <http://pelicanpro.com>. Just enter the case catalog number in the search field to view available foam sets.



Solid foam (which can be cut with an electric knife or coping saw) is preferred for oversize items such as long guns. The following cases ship with solid foam instead of Pick N Pluck™ Foam:

1700	1720	1740	1750	1770	iM3100	iM3200	iM3220	iM3300	iM3410
------	------	------	------	------	--------	--------	--------	--------	--------



PADDED DIVIDERS

An alternative to Pelican™ foam is our optional Padded Divider Sets. These durable nyllex and foam dividers are extremely versatile. The compartments are connected with Velcro® so you can easily change the configuration according to your needs.



LID ORGANIZERS

Made of simulated leather or ballistic nylon with nylon zippers. A wide variety of pocket sizes protect and keep your gear organized. They install easily with Velcro® strips (included).



- O-ring
- Panel Frame/Bezel Kit
- Attachment Hardware

PANEL FRAME AND BEZEL KITS

Many Pelican™ cases can be adapted for use with electronic interface panels by using a Panel Frame (Pelican™ Case) or Bezel Kit (Pelican™ Storm Case™) accessory. Mount most interface panels (customer supplied) flush with the rim of the Pelican™ Case or desired area in a Pelican™ Storm Case™, and your technology is ready to go.

A polymer o-ring seals the panel so the base of the case remains watertight, even with the lid open. The mounting bracket, fasteners and o-ring are included in the Panel Frame Kit.

PELICAN™ CASE AVAILABLE PANEL FRAME CASES				
CAT. NO.	INTERIOR DIMENSIONS		EXTERIOR DIMENSIONS	
	inches/cm	LxWxH	inches/cm	LxWxH
1120	7.46 x 4.96 x 3.33" (18.5 x 12.2 x 8.5 cm)		8.41 x 6.76 x 3.87" (21.4 x 17.2 x 9.8 cm)	
1150	8.49 x 5.99 x 3.75" (21 x 14.7 x 9.5 cm)		9.44 x 7.80 x 4.29" (24 x 19.8 x 10.9 cm)	
1200	9.25 x 7.12 x 4.12" (23.5 x 18.1 x 10.5 cm)		10.62 x 9.68 x 4.87" (27 x 24.6 x 12.4 cm)	
1300	9.17 x 7.00 x 6.12" (23.3 x 17.8 x 15.5 cm)		10.62 x 9.68 x 6.87" (27 x 24.6 x 17.4 cm)	
1400	11.81 x 8.87 x 5.18" (30 x 22.5 x 13.2 cm)		13.37 x 11.62 x 6.00" (33.9 x 29.5 x 15.2 cm)	
1430	13.56 x 5.76 x 11.70" (34.4 x 14.6 x 29.7 cm)		16.40 x 8.71 x 13.15" (41.6 x 22.1 x 33.4 cm)	
1450	14.66 x 10.24 x 6.12" (37.2 x 26 x 15.5 cm)		16.54 x 13.03 x 6.84" (42 x 33.1 x 17.4 cm)	
1470	15.70 x 10.70 x 3.87" (39.9 x 27.2 x 9.8 cm)		16.88 x 13.23 x 4.47" (42.9 x 33.6 x 11.3 cm)	
1490	17.75 x 11.37 x 4.12" (45.1 x 28.9 x 10.5 cm)		19.87 x 13.93 x 4.68" (50.4 x 35.4 x 11.9 cm)	
1500	16.75 x 11.18 x 6.12" (42.5 x 28.4 x 15.5 cm)		18.50 x 14.06 x 6.93" (47 x 35.7 x 17.6 cm)	
1520	18.06 x 12.89 x 6.72" (45.9 x 32.7 x 17.1 cm)		19.78 x 15.77 x 7.41" (50.2 x 40 x 18.8 cm)	
1550	18.43 x 14.00 x 7.62" (46.8 x 35.5 x 19.3 cm)		27.20 x 27.50 x 16.30 (52.4 x 42.8 x 20.6 cm)	

PELICAN™ STORM CASE™ AVAILABLE PANEL FRAME CASES				
CAT. NO.	INTERIOR DIMENSIONS		EXTERIOR DIMENSIONS	
	inches/cm	LxWxH	inches/cm	LxWxH
iM2050	9.5" x 7.5" x 4.25" (24.1 x 19 x 10.8 cm)		11.8" x 9.8" x 4.7" (30 x 24.9 x 11.9 cm)	
iM2075	9.5" x 7.5" x 7.25" (24.1 x 19 x 18.4 cm)		11.8" x 9.8" x 7.7" (30 x 24.9 x 19.6 cm)	
iM2100	13" x 9.2" x 6" (33 x 23.4 x 15.2 cm)		14.2" x 11.4" x 6.5" (36.1 x 28.9 x 16.5 cm)	
iM2200	15" x 10.5" x 6" (38.1 x 26.7 x 15.2 cm)		16.2" x 12.7" x 6.6" (41.1 x 32.2 x 16.8 cm)	
iM2300	17" x 11.7" x 6.2" (43.2 x 29.7 x 15.7 cm)		18.2" x 13.4" x 6.7" (46.2 x 34 x 17 cm)	
iM2306	17" x 6.3" x 6.2" (43.2 x 16 x 15.7 cm)		18.2" x 8.4" x 6.7" (46.2 x 21.3 x 17 cm)	
iM2370	18.2" x 12.1" x 5.2" (46.2 x 30.7 x 13.2 cm)		20" x 14.7" x 5.8" (50.8 x 37.3 x 14.7 cm)	
iM2400	18" x 13" x 6.7" (45.7 x 33 x 17 cm)		19.2" x 15.2" x 7.3" (48.7 x 38.6 x 18.5 cm)	
iM2450	18" x 13" x 8.4" (45.7 x 33 x 21.3 cm)		19.2" x 15.2" x 9" (48.7 x 38.6 x 22.9 cm)	
iM2500	20.5" x 11.5" x 7.2" (52 x 29.2 x 18.3 cm)		21.7" x 14.1" x 8.9" (55.1 x 35.8 x 22.6 cm)	
iM2600	20" x 14" x 7.7" (50.8 x 35.5 x 19.6 cm)		21.2" x 16" x 8.3" (53.8 x 40.6 x 21.1 cm)	
iM2620	20" x 14" x 10" (50.8 x 35.5 x 25.4 cm)		21.2" x 16" x 10.6" (53.8 x 40.6 x 26.9 cm)	
iM2700	22" x 17" x 8" (55.9 x 43.2 x 20.3 cm)		24.6" x 19.7" x 8.6" (62.5 x 50 x 21.8 cm)	
iM2720	22" x 17" x 10" (55.9 x 43.2 x 25.4 cm)		24.6" x 19.7" x 11.7" (62.5 x 50 x 29.7 cm)	
iM2750	22" x 17" x 12.7" (55.9 x 43.2 x 32.2 cm)		24.6" x 19.7" x 14.4" (62.5 x 50 x 36.6 cm)	
iM2875	22.5" x 21.1" x 11.4" (57.1 x 53.6 x 28.9 cm)		24.9" x 23.7" x 13.1" (63.2 x 60.2 x 33.3 cm)	
iM2950	29" x 18" x 10.5" (73.6 x 45.7 x 26.7 cm)		31.3" x 20.4" x 12.2" (79.5 x 51.8 x 31 cm)	
iM2975	29" x 18" x 13.8" (73.6 x 45.7 x 35 cm)		31.3" x 20.4" x 15.5" (79.5 x 51.8 x 39.4 cm)	



PELI™ QUICK MOUNTS

An alternative to panel frames, Peli™ Quick Mounts attach to the inside case wall using special adhesives. The interface panel can then be mounted on top of the Peli™ Quick Mounts and secured with screws (for Pelican Protector™ Case only).

ELECTRONIC INSTALLATIONS

Both the Pelican™ Case and Pelican™ Storm Case™ allow customization for electronics. Injection molding provides a reliable, durable, ready-to-ship enclosure with consistent dimensions. The copolymer material can be machined, drilled and sanded smooth.

These properties make the Pelican™ Case and Pelican™ Storm Case™ suitable for use with bulkhead connectors. Attaching equipment to the interior is equally simple using common hardware such as bolts and rivets. The hardware can be made watertight by use of o-rings, rubber gaskets or silicone.

Mounting the entire case to a wall or post is a simple way to create a waterproof control box for field use.

CUSTOM LOGO SERVICES

Personalize the outside of the case with your company logo or have your name engraved on the nameplate (Pelican™ Case). Logos can be applied in multiple colors as a Mylar® decal (250 piece minimum) or as a vibrant fade-resistant, scratch-resistant hot-stamped ink.

For prices and further information, please call Pelican Customer Service at 310.326.4700 or toll free at 800.473.5422.

CUSTOM CASE SOLUTIONS

www.pelican.com/custom

While every Pelican™ case is built tough on the outside, we provide custom services to protect delicate items on the inside. Custom foam and extreme solutions such as deck mount suspension systems and certified laboratory testing will keep your equipment organized, intact and protected through the most volatile conditions.

ADVANCED CASE SOLUTIONS

LOW COMPLEXITY Custom Foam Solutions



EXAMPLES

- Custom Labels
- Humidity Indicators
- Customizable Cushions such as Polyethylene and Polyurethane in Multiple Densities, as well as other specialty foams

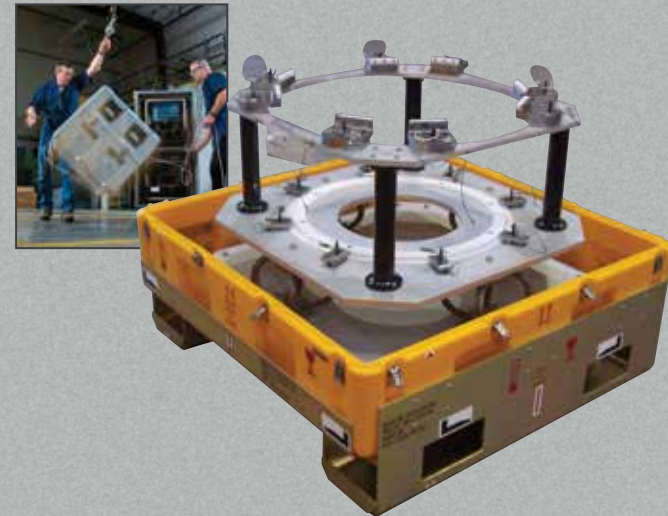
MEDIUM COMPLEXITY Interior/Exterior Solutions



EXAMPLES

- Shock Mount Metal Decks
- Custom Metal Work
- Cut and Weld
- Custom Bezel Solutions
- Forklift Risers

EXTREME COMPLEXITY Interior/Exterior Solutions with Testing Requirements



EXAMPLES

- Shock Testing
- Vibration Testing
- Drop Testing
- Salt/Fog Testing
- Pressure Testing

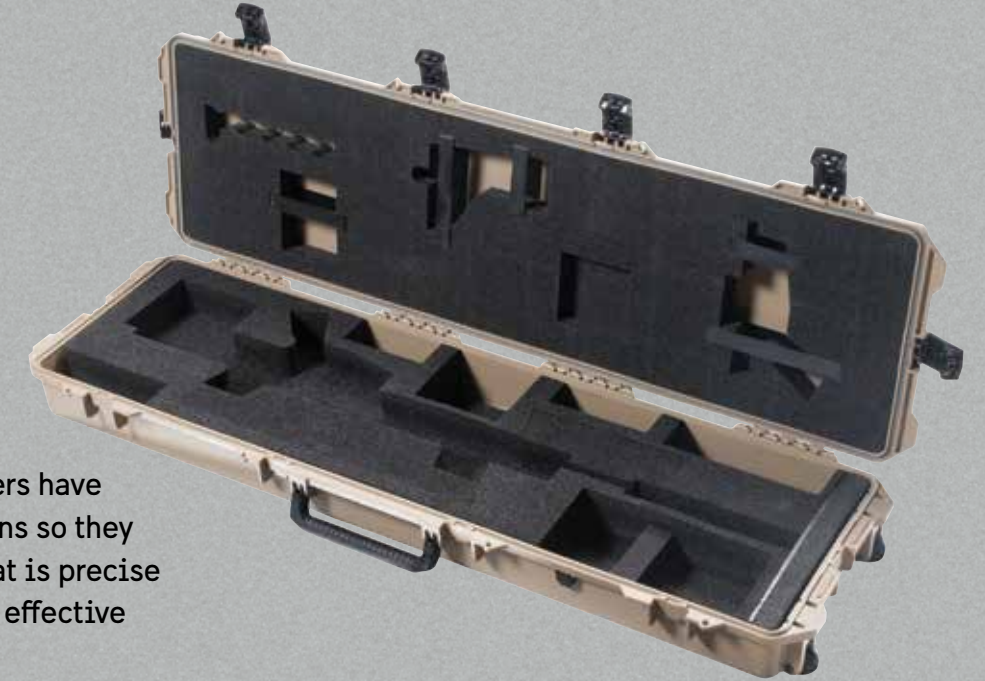
CASE CONTENTS NOT INCLUDED

CUSTOM FOAM MADE SPECIFICALLY FOR YOUR EQUIPMENT

Pelican Products provides expert packaging for both of our case lines, and we work with partners who have been in the packaging industry for over 50 years. Save time and cost by purchasing a fast and complete turnkey solution from Pelican!



Our Pelican Case Centers have the most advanced foam cutting tools, and our engineers have the latest software applications so they are able to create a design that is precise and determines the most cost effective method of manufacture.



Water Jet Technology



Die Cut Technology



CNC Router Technology

ADVANCED CASE SOLUTIONS

PELICAN ENGINEERS TAKE EVERYTHING INTO CONSIDERATION WHEN DESIGNING YOUR CUSTOM CUSHION:

- Unit Dimensions
- Accessories and Other Items
- Fragility
- Military Specifications
- UV Resistance
- Commercial Spec
- Anti Static Grounding
- Weight (and weight distribution)
- Size Restrictions
- Ship Method and How Often (ground, air or "around the town")
- Option Requirements
- ...and more!

All of this information allows us to choose the right Pelican case and foam type for your application!

NOT ALL FOAM IS EQUAL

With over 50 years of professional packaging experience, Pelican engineers utilize sophisticated engineering technology to provide a foam solution that not only serves to protect, but also creates a professional presentation that

you will be proud to display. From simple to very complex cushion designs, we know how to provide protection that will get your gear or mission critical items safely to their destination.



CUSHIONING MATERIAL:

POLYURETHANE:

Commonly used, polyurethane is a softer, open cell foam. Best for lighter weight sensitive equipment such as cameras, smartphones and laptops. Available in a variety of densities.

CUSTOM FOAM APPLICATION EXAMPLES:

- Consumer Products
- Firearms
- Computers
- Calibrated Optics
- Tools
- Video Equipment
- Bottles
- Paintings
- Musical Instruments
- Collectibles
- Any Item That You Value and Need To Protect

ANTI-STATIC POLYURETHANE:

This special foam inhibits the build up of static electricity and helps dissipate any stray static charge. It is an open cell foam that is used for lightweight items such as sensitive electronic equipment, e.g. circuit boards, computer chips, etc.

POLYETHYLENE:

Polyethylene foam is a strong, non-abrasive, water-resistant and resilient closed cell foam. Due to its excellent vibration dampening and insulation properties, it is often used for packaging fragile goods such as communications equipment, power supplies, etc. Available in a variety of densities.

ANTI-STATIC POLYETHYLENE:

Commonly used for shipping electronic parts, circuit boards and computer chips, anti-static polyethylene foam is a strong, non-abrasive, water-resistant and resilient closed cell foam. The properties of the foam slowly dissipate electrostatic charges given off by other components. Used for shock absorption, it is often used for packaging fragile goods due to its excellent vibration dampening and insulation properties.

CROSS-LINK:

Is a non-porous, non-particulate closed cell foam that is often used in a clean room environment (reduces foreign object debris – FOD). It is aesthetically pleasing and resistant to grease, dirt and water. Available in a variety of densities.

ADDITIONAL FOAM TYPES ARE AVAILABLE: FLAME-RETARDANT, CONDUCTIVE, EXPANDED FOAMS...





BEYOND FOAM

When foam is not appropriate, Pelican specializes in custom metal work to help keep your equipment secure and stable, to arrive without a scratch.

LAB TESTING

Military and OEM customers may need to certify the case will perform to specific requirements. Under precise control conditions we subject our cases to a battery of rigorous lab tests including drop, vibration, leak, heat and dust tests.



DECK MOUNT SUSPENSION SYSTEM

While foam is generally the first choice for protection, heavy or extremely fragile equipment sometimes requires fabrication of custom deck mount suspension systems to secure equipment. Cradle mounts are also the choice when the equipment can only be supported in precise locations. Pelican's machine shop is world-class, with plasma cutters, certified welders and finishing services demanded by the aerospace, defense and medical industries.



VIBRATION CONTROL

Small but constant vibration during transport is very destructive to the equipment inside a case. Pelican uses elastomer shock mounts, cable shock isolators, hard mounts, and foam that isolate the payload from case walls. Specialized foams can also mitigate vibration; our engineers understand the properties of foam to specify the type that is right for your requirements.

VIBRATION TEST

- L.A.B. servo hydraulic vibration system; 0 – 300 Hz.
- Sinusoidal with pre-programmed profiles for:
 - ISTA Integrity test procedures 11800, 14200, 1A, 1B, 1E, 1C, 1D, 2A AND 2B.
 - FED-STD-101C; 5019-1
 - 3 – 50 Hz sweep with 1G constant input
 - 1-inch dwell for loose cargo bounce
 - Mil-Std-648C; 5.3.2
- Random Vibration with pre-programmed profiles for:
 - ASTM D 4169 Air levels 1, 2, and 3
 - ASTM D 4169 Truck levels 1, 2, and 3
 - ASTM D 4169 Rail levels 1, 2, and 3
 - ISTA Integrity Test Procedures 1E, 1H, 1C, 1D, 1F, 3C, 3D, and 3E.

DROP TESTING

- Six foot cube reaction mass of reinforced concrete. A hoist capable of lifting 1 ton, and a quick release mechanism with a load capacity of ½ ton.

IMPACT TEST

- Falling dart – 84” drop height with darts weighing between 5 and 15 lbs.
- Penetration test for category 1 containers – ATA 300 paragraph B-2-5

THERMAL TEST

- Walk in environmental chamber 6-foot wide by 8 foot high and 8 feet deep with a thermal range of -100°F to 200°F.

IMMERSION TEST

- Internal dimension of the chamber is 54” x 30 x 36”H. Able to simulate immersions up to 2 meters.
- Small immersion tank capable of immersions up to 1 meter on small IM cases.
- 80-inch deep large immersion tank

RAIN TEST

- Small rain chamber capable of up to 4 inches per hour.

PNEUMATIC PRESSURE TESTING

- 100” and 80” water manometers
- 100” mercury manometer.
- Digital manometer – 10 psi max.

MITUTOYO™ HARDNESS TESTER

- Metal evaluation of product used in cases.

COMPRESSION AND TENSILE TESTING

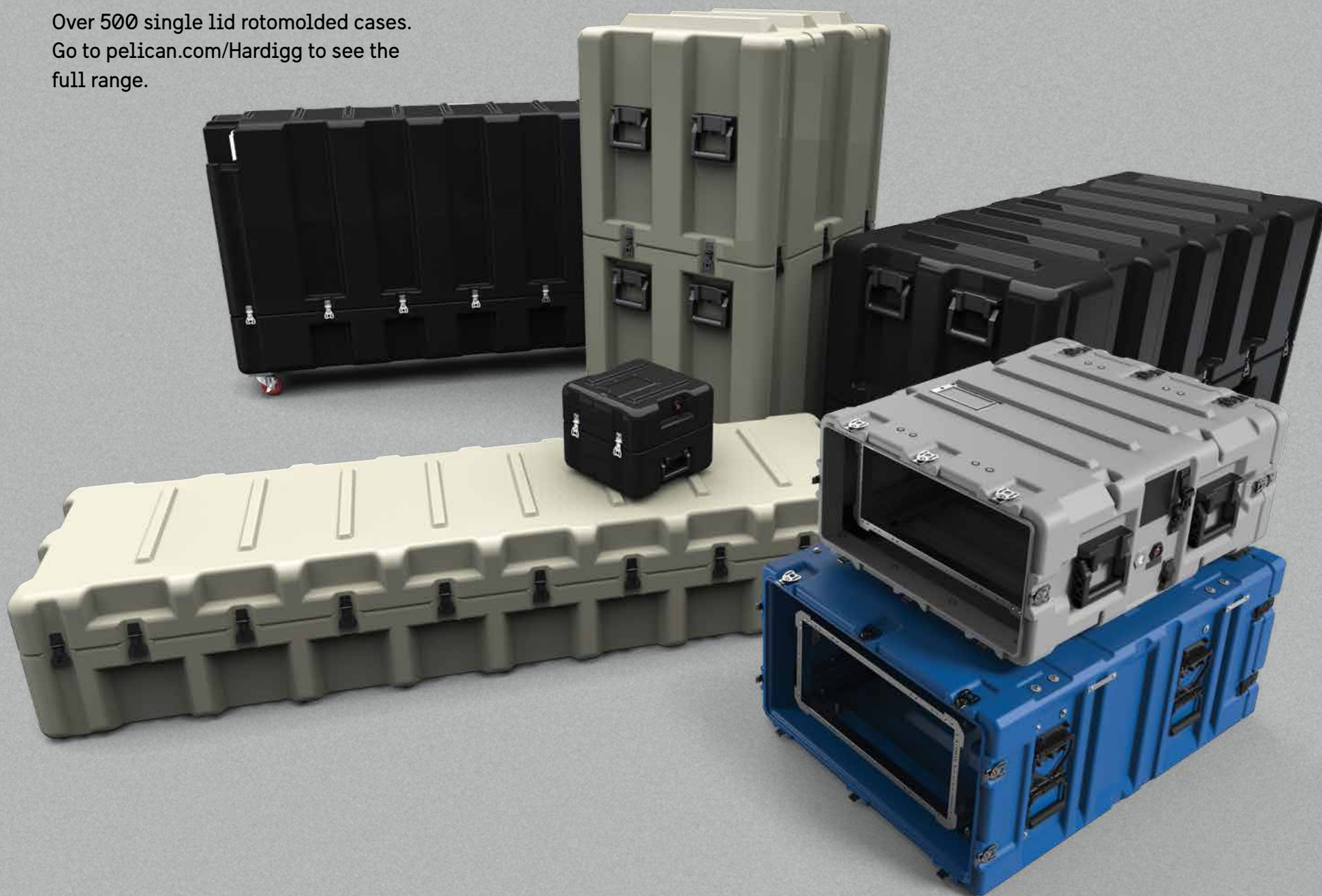
- Instron compression tester, model 3367.
- Load range of 6600 lbs on small items.

LEAK TEST

- Immersion: 54” x 30” x 36” high chamber. Able to simulate immersions up to 2 meters.
- Rain: Small rain chamber capable of up to 4 in. per hour.
- Pneumatic Pressure: 100” and 80” water manometers. 100”mercury manometer.
- Digital manometer – 10 psi max.

ALSO FROM PELICAN...

Over 500 single lid rotomolded cases.
Go to pelican.com/Hardigg to see the
full range.



ALSO FROM PELICAN