

BROADWAY™ BROADBAND™

24" x 48"
(610mm x 1219mm)

Broadway Broadband panels present an attractive, 'easy to install' solution for acoustic treatment when you want maximum control over primary reflections, flutter echo and standing waves. These full size 24"x 48" panels are particularly effective in larger installations and rooms where the reverberant field and echo is excessive. Broadband Absorbers can be 'butted-up' for complete wall coverage and maximum absorption or spread in an array to leave a sense of 'air' or natural ambience. The large panel design also lends itself to other installations: To control bass in studio and home theatre, thicker 2" and 3" Broadband Absorbers are combined with Corner or Offset Impalers to create an air cavity in behind the panel. For general office noise, thinner 1" panels are easily flush mounted on the wall surfaces using Surface impalers to attenuate the reverberant field. These same panels offer an effective 'upgrade' for drop ceilings as the 2 foot by 4 foot panel can fit standard T-bar grid layouts. Broadway Broadband come in choice of 3 thicknesses and 3 colors and may be ordered with our without a beveled edge.

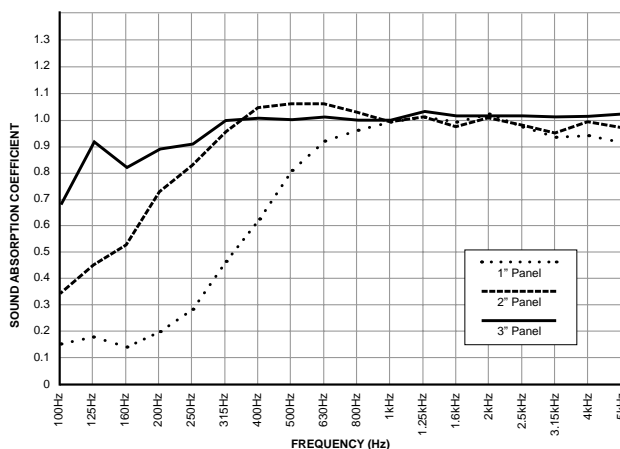
SPECIFICATIONS:

DIMENSIONS	24" x 48" (610mm x 1219mm)
PANEL DEPTH	1" (25mm), 2" (51mm), 3" (76mm)
CORE MATERIAL DENSITY	Formed, semirigid inorganic glass fibers, 6.0 lbs pcf (96 kg/m ³)
FABRIC FACING	Acoustically transparent polyester
BACKING	Sealed with acoustically transparent micro-mesh
EDGE TREATMENT	Sealed and hardened with resin

ABSORPTION CHARACTERISTICS:*

PANEL DEPTH	125Hz	250Hz	500Hz	1kHz	2kHz	4kHz	NRC
1" Depth	0.17	0.28	0.81	1.00	1.02	0.95	0.80
2" Depth	0.45	0.83	1.07	1.00	1.01	1.00	1.00
3" Depth	0.92	0.91	1.00	1.00	1.02	1.03	1.00

* Testing performed by Riverbank Acoustical Laboratories. The test method conformed explicitly with the requirements of the ASTM Standard Test Method for Sound Absorption and Sound Absorption Coefficients by the Reverberation Room Method: ASTM C 423-02a and E795-05.



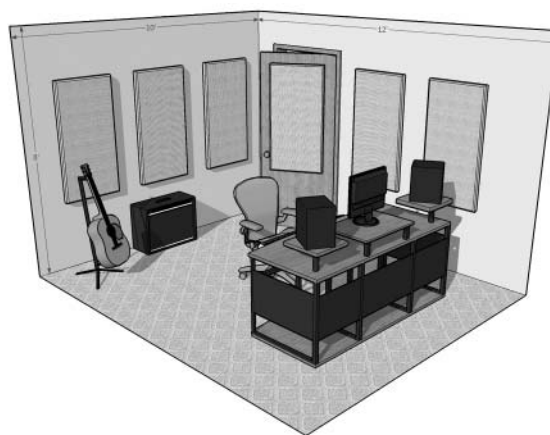
FIRE & BURN PERFORMANCE:**

TEST	CLASS	FLAME SPREAD	SMOKE DENSITY
ASTM E 84-05	1 OR A	15 FSI	155 SD
CAN/UL-S102	1 OR A	15 FSC1	155 SD

** Test data provided by Bocyote Materials Testing Inc. This method, designated as ASTM E 84-05, "Standard Method of Test for Surface Burning Characteristics of Building Materials", is used to measure and describe the response of materials, products, or assemblies to heat and flame under controlled conditions, but does not by itself incorporate all factors required for fire-hazard or fire-risk assessment of the materials, products, or assemblies under actual fire condition.






APPLICATION:



PRODUCT RANGE:

ORDER NO.	COLOR	DEPTH	EDGE	COVERAGE	BOX QTY.
F101-2448-00	Black	1" (25mm)	Square	48 sq/ft (4.46 sq/m)	6
F101-2448-03	Beige				
F101-2448-08	Grey				
F102-2448-00	Black	2" (51mm)	Square	48 sq/ft (4.46 sq/m)	6
F102-2448-03	Beige				
F102-2448-08	Grey				
F122-2448-00	Black	2" (51mm)	Beveled	48 sq/ft (4.46 sq/m)	6
F122-2448-03	Beige				
F122-2448-08	Grey				
F103-2448-00	Black	3" (76mm)	Square	32 sq/ft (2.97 sq/m)	4
F103-2448-03	Beige				
F103-2448-08	Grey				
F123-2448-00	Black	3" (76mm)	Beveled		4
F123-2448-03	Beige				
F123-2448-08	Grey				

MOUNTING OPTIONS:

SURFACE IMPALER	OFF-SET IMPALER	CORNER IMPALER
		
F101-1000-00	F101-1001-00	F101-1002-00
24 per box	8 per box	8 per box