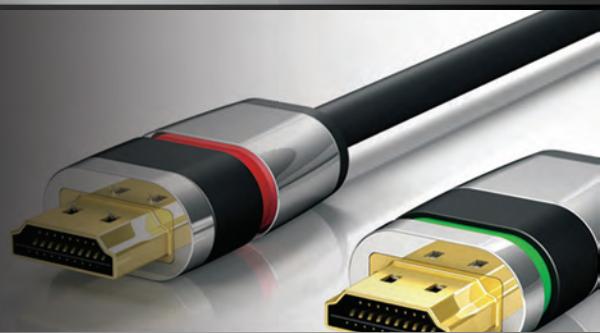




TOTALWIRE



WHAT IS TOTALWIRE™?

TOTALWIRE™

A Global, Future-Proof, Certified Digital Connectivity Solution

TOTALWIRE™ embodies PureLink's proprietary transport standards, protocols, and cables for each HD Video connectivity platform utilized in our solutions, currently 3G/HD-SDI, CATx (HDBaseT), DVI, HDMI, and Fiber.

PureLink's TOTALWIRE™ line of cables and accessories are an ideal companion to PureMedia™ and HDTools signal management solutions, offering reliable and high-performance connectivity fit for today's professional A/V environment.

TOTALWIRE™ Connectivity Solutions include:

High Performance Digital Cables

HDMI, DVI, and DisplayPort cable assemblies for maximum audio and visual impact

Fiber Optics

Multimode fiber optic cables and integrated fiber extension solutions for long distance transmission

CATx (HDBaseT) Cables

Factory-terminated and bulk network cables for optimum range and performance

Adapters & Accessories

High quality digital adapters and port savers for maximum flexibility and ease of installation

Featuring quality craftsmanship and the highest technological standards, TOTALWIRE™ solutions can solve almost any installation requirement.

Stay connected with TOTALWIRE™.

TABLE OF CONTENTS

ULS Series	03
ULS 1000 High Speed HDMI Cables	
PI Series	05
PI1000 HDMI Cables	
PI3000 HDMI to DVI Cables	
PI4000 DVI Cables	
PI5000 DisplayPort Cables	
PI5100 DisplayPort to HDMI Cables	
PS Series	08
PS1300 HDMI Flat Cables	
PS1500 Super Thin HDMI Cables	
PS1700 Super Thin HDMI Cables	
EZ HDMI	10
EZ-H HDMI over Fiber Cables	
EZ DVI	11
EZ-D DVI over Fiber Cables	
EZ HD-SDI	12
EZ-S SDI over Fiber Cables	
Fiber Cable	13
Multi-mode 1 LC Cables	
Multi-mode 2 LC Cables	
Multi-mode 4 LC Cables	
CAT-X Cable	15
CX Cables	
CX Cable Connectors	
HBM-01 Termination Kit	
Adapters	17

ULTIMATE SERIES

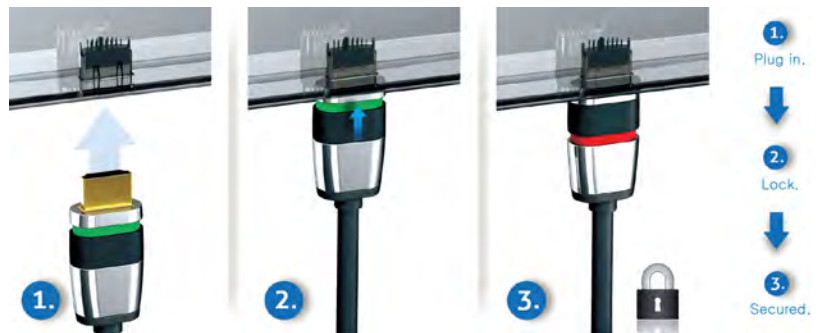
The Ultimate Series is the latest addition to the TOTALWIRE line of high speed, high-tech HDMI cables. Featuring a patented plug assembly and exclusive ULS™ secure locking technology, the Ultimate Series HDMI cables are designed to prevent unintentional disengagement from devices and deliver an uninterrupted and safe connection.

• ULTRA-LOCK SYSTEM

THE SAFEST LOCKING SYSTEM FOR HDMI

As more and more devices are designed with awkwardly positioned HDMI sockets, any accidental movement or pulling weight of the cable can easily disengage the connector, contributing to partial or even complete signal loss.

The Ultra-Lock System (ULS™) features a patented locking mechanism that extends and holds the connector in place. The universal 360 ° locking switch is fully compatible with existing HDMI receptacles and allows easy on/off locking positions with color indicators.



• THE HDMI ADVANTAGE

THE ULTIMATE CONNECTION JUST GOT BETTER

The Ultimate Series HDMI cables are both backward and forward compatible, complying with the latest multimedia standards including HDMI 2.0 and supporting resolutions up to Ultra HD/4K @ 60Hz, as well as full 3D. An integrated Ethernet channel allows 100MBit network transmission for IP-based applications over HDMI, such as home entertainment (TVs, set-top boxes, and game consoles), eliminating the need for additional wiring.

With exclusive, high-tech construction and design features including high purity OFC tinned copper wire, triple shielding, 24 ct. gold plated contacts, and APO Technology (Active Performance Optimizer), the Ultimate Series offers optimum transmission quality with added security and durability.

Ultimate Series HDMI cables are manufactured exclusively in modern production facilities and endure stringent testing to the latest HDMI specifications.

ULS1000

Certified High Speed HDMI Cable with Security Lock



- High-speed with Ethernet
- HDMI 2.0 for 3D and Ultra HD/4K support
- Innovative ULS™ (Ultra Lock System) technology
- High-purity OFC copper wire, 3-fold shielding
- APO Technology (Active Performance Optimizer)
*for 5m, 7.5m, and 10m lengths only

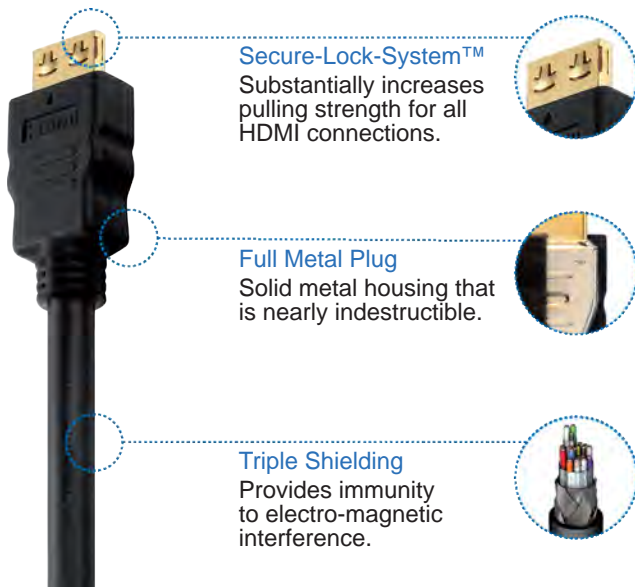
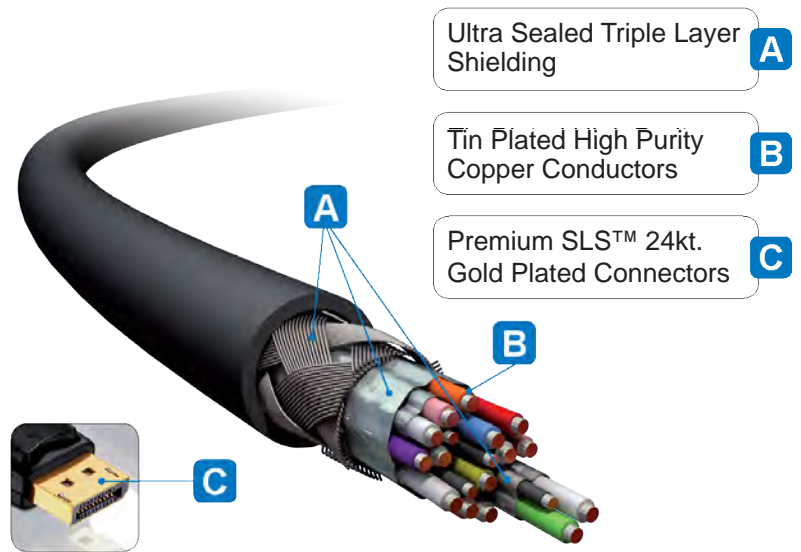
Item No.	Length
ULS1000-005	16.5ft 0.5m
ULS1000-010	33ft 1m
ULS1000-015	49.5ft 1.5m
ULS1000-020	66ft 2m
ULS1000-030	100ft 3m
ULS1000-050 (w/ APO™)	165ft 5m
ULS1000-075 (w/ APO™)	247.5ft 7.5m
ULS1000-100 (w/ APO™)	330ft 10m

PUREINSTALL SERIES

The TOTALWIRE PureInstall Series includes premium HDMI, DVI, and DisplayPort cables and multi-use adapters that are designed to deliver unsurpassed performance and reliability in professional A/V environments. PureInstall Series cables offer the greatest degree of flexibility while providing secure, high speed data transport over longer distances for a virtually perfect connection.

• GERMAN ENGINEERING

With exclusive, high-tech construction and design features including triple-shielded cables, metal casing, and 24 kt. gold plated contacts, PureInstall Series cables are significantly more durable than traditional copper cables and provide lossless signal transmission.



• SLS™

The biggest challenge to optimal HDMI performance is in the cable's connector. Standard HDMI connectors can easily loosen and disengage from the device, causing total signal loss and adding harmful stress on the input port.

The TOTALWIRE Secure Lock System (SLS) provides a stable connection to HD devices despite heavy strain, delivering up to 25 lbs. of retention force. The lock is automatically engaged when the connector is inserted into a device and easily disengaged by pulling the connector to remove the cable.

PI1000

Certified High Speed HDMI Cable with Ethernet



- High Speed HDMI for 3D and Ultra HD/4K (2160p)
- HDMI v. 2.0 compatible
- Triple shielded for superior noise immunity
- SLS™ Locking Technology

Item No.	Length
PI1000-005	1.65ft 0.5m
PI1000-010	3.3ft 1m
PI1000-020	6.6ft 2m
PI1000-030	10ft 3m
PI1000-050	16.5ft 5m
PI1000-100	33ft 10m
PI1000-150	49.5ft 15m
PI1000-200	66ft 20m

PI3000

Certified High Speed HDMI/DVI Cable



- HDMI-A male to DVI-D male (18+1)
- Triple shielded for superior noise immunity
- SLS™ Locking Technology

Item No.	Length
PI3000-005	1.65ft 0.5m
PI3000-010	3.3ft 1m
PI3000-020	6.6ft 2m
PI3000-030	10ft 3m
PI3000-050	16.5ft 5m

PI4000

Certified DVI Single-Link Cable



- DVI-D male (18+1) to DVI-D male (18+1)
- Supports resolutions up to 1600x1200
- Triple shielded for superior noise immunity

Item No.	Length
PI4000-005	1.65ft 0.5m
PI4000-010	3.3ft 1m
PI4000-020	6.6ft 2m
PI4000-030	10ft 3m
PI4000-050	16.5ft 5m
PI4000-100	33ft 10m
PI4000-150	49.5ft 15m
PI4000-200	66ft 20m

PI5000

Certified DisplayPort Cable



- DisplayPort Male to DisplayPort Male
- VESA Standard 1.2
- Triple shielded for superior noise immunity

Item No.	Length
PI5000-010	3.3ft 1m
PI5000-020	6.6ft 2m
PI5000-030	10ft 3m

PI5100

Certified DisplayPort/HDMI Cable



- DisplayPort Male to HDMI Male (non bi-directional)
- VESA standard 1.2
- DisplayPort male converts to HDMI-A male *not bidirectional*
- Supports resolutions up to 1080p
- Triple shielded for superior noise immunity

Item No.	Length
PI5100-010	3.3ft 1m
PI5100-020	6.6ft 2m
PI5100-030	10ft 3m

PROSPEED SERIES

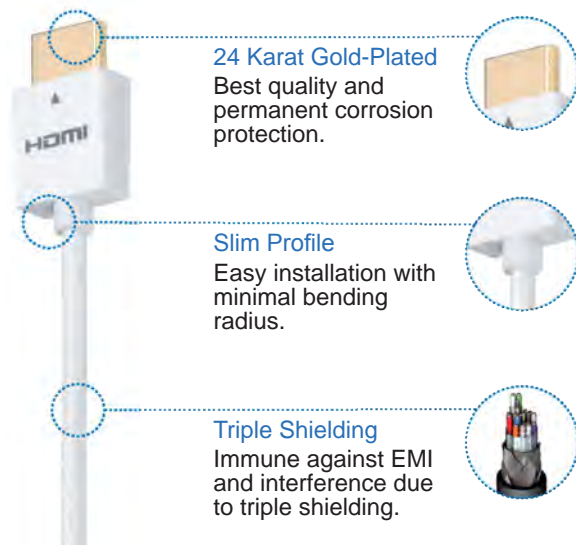
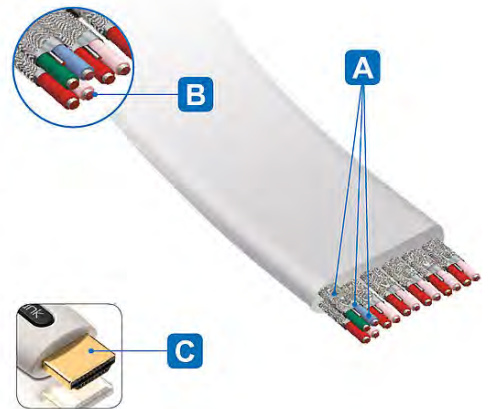
The **TOTALWIRE ProSpeed and ProSpeed Thin Series** focuses on a fresh, slim design engineered to comply with the most challenging installation demands. These space-saving HDMI cables provide the highest picture and sound quality in a smaller sized package for better manageability and ease of installation.

ProSpeed and ProSpeed Thin Series premium HDMI cables feature a shielded high-purity copper and audiophile braid with an integrated Ethernet channel, and are compatible with the newest HDMI specifications, supporting Deep Color, 3D, ARC (Audio Return Channel) and resolutions up to Ultra HD/4K @ 60Hz.

• MINIMIZE CLUTTER, MAXIMIZE QUALITY

The **ProSpeed Series** utilizes a flat cable design with oxygen free (OFC) copper wires that are spread out horizontally and farther apart than round cables, which helps reduce cross-talk and produce a cleaner signal. The low-profile form factor simplifies installation, fitting closer to walls and around bends and turns, and can be discreetly hidden in wall or under carpeting.

- A** 3-layer shieldings Connectors
- B** High purity silver plated OFC Copper
- C** 24 karat gold-plated



• COMPROMISE NOTHING

Featuring a super thin cable (3.6 mm diameter) and tough metal housing, the **ProSpeed Thin Series** cables are designed specifically for connections in tight spaces and restricted access to HDMI ports. The smaller connector head and minimal bend radius make these cables ideal for use with flat panel displays where the HDMI input is positioned sideways or under the device.

PS1300

Certified Flat High Speed HDMI Cable with Ethernet



- High Speed HDMI for 3D and Ultra HD/4K (2160p)
- Integrated Ethernet channel for 100 Mbps transmission over HDMI
- Gold plated connectors for optimal transmission quality and durability
- High-purity OFC copper and 3-fold shielding

Item No.	Length
PS1300-010	3.3ft 1m
PS1300-020	6.6ft 2m
PS1300-030	10ft 3m

PROSPEED - THIN

PS1500

SuperThin High Speed HDMI Cable with Ethernet



- High Speed HDMI for 3D and Ultra HD/4K (2160p)
- Integrated Ethernet channel for 100 Mbps transmission over HDMI
- Gold plated connectors for optimal transmission quality and durability
- High-purity OFC copper and 3-fold shielding

Item No.	Length
PS1500-010	3.3ft 1m
PS1500-020	6.6ft 2m
PS1500-030	10ft 3m



PS1700

SuperThin High Speed HDMI Cable with Ethernet



- High Speed HDMI for 3D and Ultra HD/4K (2160p)
- Integrated Ethernet channel for 100 Mbps transmission over HDMI
- Gold plated connectors for optimal transmission quality and durability
- High-purity OFC copper and 3-fold shielding

Item No.	Length
PS1700-010	3.3ft 1m
PS1700-020	6.6ft 2m
PS1700-030	10ft 3m
PS1700-050	16.5ft 5m

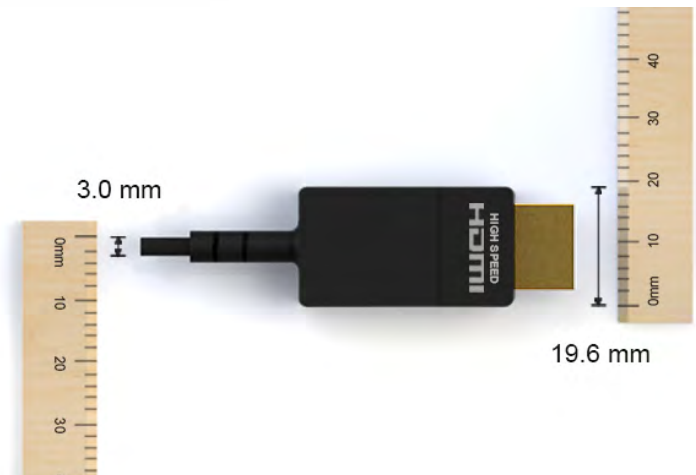


EZ HDMI

The **TOTALWIRE™ EZ-H Integrated Optical Cables for HDMI** offers the only truly rugged plug-n-play extension solution designed to go beyond the limitations of copper. The EZ-H incorporates the advantages of fiber into an easy to manage, unified, compact form.

• SMALLER IS BETTER

With its ultra thin, flexible cable (3mm jacket diameter) and small connector, the EZ-H can easily be pulled through conduits and sustain difficult turns for quick, versatile installations. EZ-H Cables support all PC and HDTV resolutions up to 4K/Ultra HD with 36 bit Deep Color and HDCP compliance at a distance of up to 100 meters.



• ALL THE ADVANTAGES, NONE OF THE HASSLE

EZ-H cables are completely self-powered and available in pre-terminated lengths with both plenum and UL riser sleeves. The EZ-H can be used simply as a regular HDMI cable for powerful, long-distance extension without the need for additional extenders, equalizers, or power supplies.

EZ-H

EZ HDMI over Fiber Cable with TotalWire Technology



- Supports all PC and HDTV resolutions up to Ultra HD/4K
- Supports full 3D and 36-bit Deep Color
- Incorporates active transceivers inside connectors
- Immune from electrical noise (EMI & RFI)
- Plug-n-play (no additional power supply required)
- HDCP compliant
- Plenum rated

Item No.	Length
EZ-H-010	33ft 10m
EZ-H-020	66ft 20m
EZ-H-030	100ft 30m
EZ-H-040	133ft 40m
EZ-H-050	165ft 50m
EZ-H-070	231ft 70m
EZ-H-100	330ft 100m

EZ DVI

The **TOTALWIRE™ EZ-D Integrated Optical Cables for DVI** makes installation easier than ever with its unique, detachable Tx & Rx connector bodies and ultra thin cable. The EZ-D delivers unmatched signal transmission quality over long distances in a rugged, compact, and reliable form.

• EZ-IN, EZ-OUT

The removable connector transmitter body, combined with the thinnest cable available, allows the EZ-D to be effortlessly maneuvered through conduits - something previously impossible with DVI. Furthermore, the plug-n-play functionality requires no external power supply, as the transmitter and receiver bodies draw power from the source and sync respectively.



• SIMPLICITY & RELIABILITY

The EZ-D offers the only truly rugged, detachable DVI body in a compact and reliable form, supporting up to WUXGA (1920 x 1080) and 1080p with 36 bit Deep Color and HDCP compliance up to a distance of 100 meters (328 ft).

EZ-D

EZ DVI over Fiber Cable with TotalWire Technology



- Supports all PC and HDTV resolutions up to 1080p
- Detachable connectors for convenient, no-hassle installation
- Incorporates active transceivers inside connectors
- Plug-n-play (no additional power supply required)
- HDCP compliant
- Plenum rated

Item No.	Length
EZ-D-010	33ft 10m
EZ-D-020	66ft 20m
EZ-D-030	100ft 30m
EZ-D-040	133ft 40m
EZ-D-050	165ft 50m
EZ-D-070	231ft 70m
EZ-D-100	330ft 100m

EZ HD-SDI

The TOTALWIRE™ EZ-S Optical Cable Assembly for 3G/HD-SDI offers a unique, simplified video transport solution for eliminating fallout video quality and signal delays in digital video applications such as broadcast and surveillance. The EZ-S transmits multi-rate signals including SDI, HD-SDI, and 3G-SDI at resolutions up to 1080p over a 1-channel fiber cable assembly.

EZ-S TX/RX

EZ-S Optical Cable Assembly for 3G/HD-SDI - Tx/Rx Modules



The EZ-S 3G/HD-SDI connector modules feature built-in electrical-to-optical conversion technology which extends the transmission distance without the need for additional components and repeaters. The compact balun simplifies installation even further and requires no adjustments, making setup quick and painless.

- Fully integrated passive optical assembly
- Extends up to 1900ft (600M)
- Supports multi-rate SDI, HD-SDI, and 3G-SDI signals
- Video Pathological Test Code compliant
- ST connector for optical in/out

FIBER CABLE

PureLink's **TOTALWIRE™ Fiber Optic Cable Assemblies** enable the most secure, pixel-perfect signal transmission and are compatible with all PureMedia™ and HDTools fiber optic extension and distribution systems.

• QUALITY CONSTRUCTION

TOTALWIRE™ fiber cables are factory terminated with industry standard LC connectors in a single, duplex, or four-fiber breakout cable design. RJ-style housing with a push-pull mechanism allows easy disengagement in dense spaces.

• JUST ADD FIBER

Because of its immunity to electrical interference and its greater speeds over longer distances, fiber optic cable assemblies are ideal for applications that require high-bandwidth, high data rate transmission. Every TOTALWIRE™ fiber cable is quality tested to guarantee minimum insertion loss.

1LC FIBER OPTIC CABLE

Multi-Mode 1 LC Fiber Optic Cable with TotalWire Technology



- Pre-terminated 50/125 multimode fiber
- RJ-style push-pull housing
- PVC jacket
- RoHS compliant
- Terminated with LC connectors
- Available in various lengths from 10m (33 ft) to 100m (330 feet)

Item No.	Length
FLC1-010	33.0 ft 10 m
FLC1-020	65.6 ft 20 m
FLC1-030	98.4 ft 30 m
FLC1-040	131.2 ft 40 m
FLC1-050	164.0 ft 50 m
FLC1-070	229.6 ft 70 m
FLC1-100	330.0 ft 100 m

2LC FIBER OPTIC CABLE

Multi-Mode 2 LC Fiber Optic Cable with TotalWire Technology



- Pre-terminated 50/125 multimode fiber
- RJ-style push-pull housing
- Terminated with LC connectors
- PVC jacket
- RoHS compliant
- Available in various lengths from 10m (33 ft) to 100m (330 feet)

Item No.	Length
FLC2-010	33.0 ft 10 m
FLC2-020	65.6 ft 20 m
FLC2-030	98.4 ft 30 m
FLC2-040	131.2 ft 40 m
FLC2-050	164.0 ft 50 m
FLC2-070	229.6 ft 70 m
FLC2-100	330.0 ft 100 m

4LC FIBER OPTIC CABLE

Multi-Mode 4 LC Fiber Optic Cable with TotalWire Technology

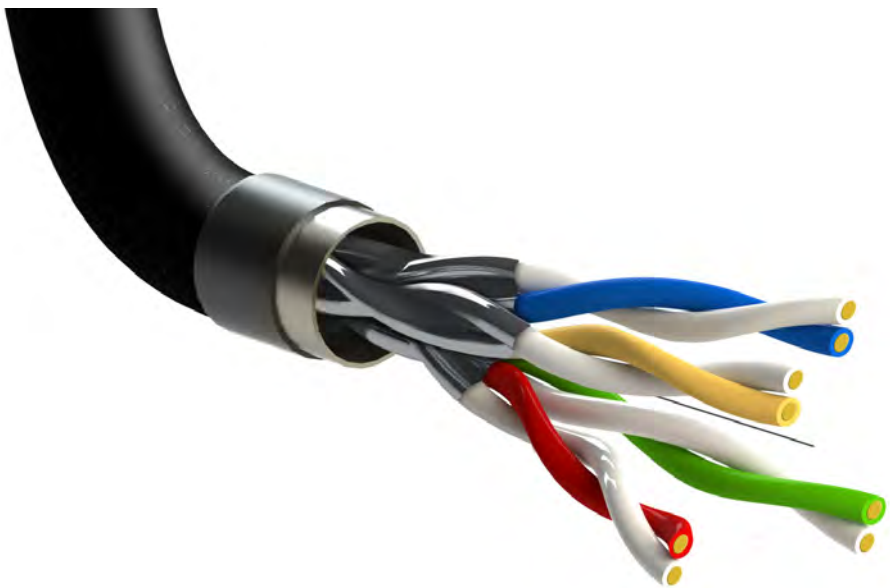


- Individually color-coded, 62.5/125 simplex sub cables
- RJ-style push-pull housing
- Terminated with LC connectors
- PVC jacket
- RoHS compliant
- Available in various lengths from 10m (33 ft) to 100m (330 feet)

Item No.	Length
FLC4-010	33.0 ft 10 m
FLC4-020	65.6 ft 20 m
FLC4-030	98.4 ft 30 m
FLC4-040	131.2 ft 40 m
FLC4-050	164.0 ft 50 m
FLC4-070	229.6 ft 70 m
FLC4-100	330.0 ft 100 m

CX SERIES

The TOTALWIRE™ CX Series with End-to-End Shield is a certified F/UTP cable built for performance and reliability, providing support for 10 Gigabit data transmission including Ultra HD/4K and HDBaseT in high noise environments.



• SET AND FORGET

PureLink's **TOTALWIRE™ CX Series High Performance Network Cables** with End-to-End Shield and lifetime warranty rids installations of all concerns. The CX Series offers a “set and forget” cabling system that effectively delivers ruggedness, reliability, compliance, and peace of mind to many data-sensitive applications such as government, gaming, medical, and financial installations.

The CX Series is designed to support 10 Gigabit data transmission including Ultra HD/4K and HDBaseT in high noise environments. The End-to-End Shield features individually shielded pairs to ensure minimal crosstalk. CX Series cables are also an ideal companion to the PureMedia™ and HDTools line of HDBaseT® extension systems for optimum range and performance.

• BUILT TO LAST

CX Series cables feature a shielded, solid built connector, ensuring that this critical point is as reliable as any other point of the cable. The high quality construction of both the cable and plug makes the TOTALWIRE CAT-X design ideal for high bandwidth signal transmission including Ultra HD/4K, PoE, and control. The CX Series is compliant with U/FTP specifications, ISO/IEC11801 shielding, ANSI/TIA-568-C.2, and outperforms any other cable system in its class for all Ultra HD/4K and HDBaseT 2.0 applications.

CX SERIES

High Performance Network Cables



- CAT6A (UTP) cable system
- Supports 10-GbE up to 330 ft.
- Shielded connector and 4 shielded twisted pairs (U/FTP)
- Optimized for HDBaseT® installations
- Pre-terminated lengths or bulk reels of 1000 ft.
- Lifetime Warranty

Item No.	Length
CX-010	33ft 10m
CX-020	66ft 20m
CX-030	100ft 30m
CX-040	133ft 40m
CX-050	165ft 50m
CX-070	231ft 70m
CX-100	330ft 100m
CX-1000	1,000ft 305m

CX-CONNECTOR



- Unique mechanical design ensures easy and accurate assembly along with 360-Degree strain relief
- Field installable plug for cable conductors up to 0.048" and overall diameters up to .295"
- Low profile design allows for use in high density switches and routers
- Anti-snap boot prevents plug tab damage during installation

Item No.	Performance	Conductor Diameter	Cable Diameter	Packaging
CX-Connector	CAT6a	.042"-.048" [1.07-1.22]	.270"-.295" [6.86-7.49]	Individually Bagged

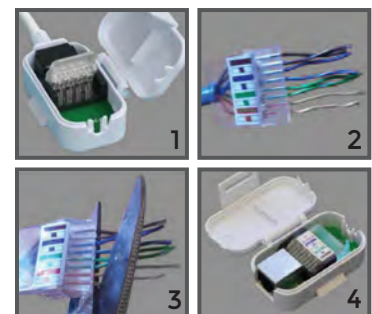
EZ-TERMINATOR

Tools-Less CATx/HDBaseT Termination Kit



- Fast, accurate and reliable termination of Gigabit Ethernet cables
- Locate and terminate all 8 wires using easy color codes
- Detachable wiring bridge for ease of use
- Robust snap fit outer casing
- Delivers exceptional performance while streamlining installations

Item No.	Length
HBM-01	3in 76.2mm



ADAPTERS

TOTALWIRE™ PureInstall Series Multiuse Adapters and Connectors are the perfect tools for solving connectivity conflicts and facilitating installation. The PureInstall Series offers digital (DisplayPort, DVI, & HDMI) adapters, gender changers, and port savers providing greater flexibility and added security to connection points

PI010

DVI-D Male to HDMI-A Female Adapter



- Certified High Speed

PI015

HDMI-A Male to DVI-D Female Adapter



- SLS™ Technology
- Certified High Speed

PI020

HDMI-A Female to HDMI-A Female Gender Changer



- Certified High Speed

PI030

HDMI-A Male to HDMI-A Female Port Saver Adapter



- Certified High Speed w/ Ethernet

PI035

HDMI-A Male to HDMI-A Female Right-Angle Adapter



- 90° Tilted
- SLS™ Technology
- Certified High Speed w/ Ethernet

PI040

HDMI-A Male to HDMI-A Female 270° Adapter



- 270° Tilted
- SLS™ Technology
- Certified High Speed w/ Ethernet

PI045

HDMI-A Female to DVI-D Female Adapter



- Certified High Speed

PI050

HDMI-A Male to Mini HDMI-C Female Adapter



- SLS™ Technology
- Certified High Speed w/ Ethernet

PI055

HDMI-A Male to Mini HDMI-C Female Adapter



- SLS™ Technology
- Certified High Speed w/ Ethernet

PI060

HDMI-A Male to DVI-D Female Port Saver Adapter



- SLS™ Technology
- Certified High Speed

PI065

DVI-D Male (18+1) to HDMI-A Female Port Saver Adapter



- Certified High Speed

PI070

DVI-D Male (18+1) to DVI-D Female (24+1) Port Saver Adapter



- Certified High Speed

PI075

HDMI-A Male to HDMI-A Female Power Adapter



- 6V 1A Power Adapter
- Ideal for long distance HDMI connections and active cables
- SLS™ Technology
- Certified High Speed w/ Ethernet

PI080

Micro HDMI-D Male to HDMI-A Female Adapter



- SLS™ Technology
- Certified High Speed w/ Ethernet

PI085

HDMI-A Male to Micro HDMI-D Female Adapter



- SLS™ Technology
- Certified High Speed w/ Ethernet