

PureLink

Owner's Manual



PS-6200

PureLink Presentation Switcher

PureLink™

535 East Crescent Avenue
Ramsey, NJ 07446
USA

Tel: +1.201.488.3232

Fax: +1.201.621.6118

E-mail: sales@purelinkav.com
www.purelinkav.com

For order support, please contact your local dealer.
For technical support, please contact us at support@purelinkav.com

TABLE OF CONTENTS

Chapter 1. Product Overview

1.1 Safety Precautions	-----	3
1.2 Declaration of Conformity	-----	4
1.3 What's in the Box	-----	4
1.4 Product Introduction	-----	5
1.5 Front View	-----	6
1.6 Rear View	-----	6
1.7 Installation Guidelines	-----	7

Chapter 2. Product Features & Specification

2.1 Features	-----	8
2.2 Specification	-----	8

Chapter 3. Operational guidelines

3.1 Main Menu User Guide	-----	11
--------------------------	-------	----

Chapter 4. Communication Code Configuration

4.1 Control Programmer's Guide	-----	15
4.2 Overview	-----	15
4.3 Command Code Formats	-----	15
4.4 General Rules for Command Codes	-----	14
4.5 Command Ack Value Response	-----	18
4.6 Example Command Codes	-----	19
4.7 LAN Code Configuration	-----	22
4.8 Web Interface	-----	23

Chapter 5. Firmware updates instruction & Warranty Information

5.1 Firmware Update Instruction	-----	26
---------------------------------	-------	----

Chapter 6. Additional Information

6.1 Manufacturer's Warranty (2-Year)	-----	27
6.2 Customer Service	-----	27

Chapter 1. Introduction

1.1 Safety Precautions

- All safety instructions should be read and understood before the unit is operated.
- The owner's manual and safety instructions should be retained for future reference.
- Unplug this unit from the wall outlet before cleaning. Do not use liquid or aerosol cleaners. Use a damp cloth only.
- Keep away from wet, magnetic, and flammable surfaces or substances.
- Always use the correct external power supply (indicated on the product label) when operating this unit.
- This unit may be equipped with a 3 wire grounding-type plug - a plug having a third (grounding) pin. This pin will only fit in to a grounding type power outlet. If you are unable to insert the plug in to the outlet, contact your electrician to replace your obsolete outlet.
- Air vents should be kept clean and unobstructed at all times.
- Please refrain from using frayed power cords and damaged wall outlets.
- Do not place any heavy objects or equipment on top of the unit.
- To prevent electrical damage, TURN OFF the power to this unit before inserting or removing INPUT/OUTPUT slot cards.

If you experience any malfunctioning of product or have any question as to operation of the product, please contact our customer service center.

PureLink™

Tel: 201.488.3232

Email: support@purelinkav.com

1.2 Declaration of Conformity

According to Council Directive 73/23/EEC (February 19, 1973) on the Harmonization of the Laws of Member States relating to Electrical Equipment; Council Directive 89/336/EEC (May 3, 1989) on Electromagnetic Compatibility; Council Directive 93/68/EEC (July 22, 1993)-Amending Directives 89/336/EEC (MC) and 73/23/EEC (Low Voltage Equipment Safety), and/or CPU Boards and Power Supplies used Council Directive 93/68/EEC with Matrix, Dtrovision LLC, 535 E Crescent Ave Ramsey, NJ 07446 201-488-3232, declares under sole responsibility, that the product identifies with 93/66/EEC of the Council Directive Low Voltage Equipment Safety. Each product marketed is identical to the representative unit tested and found to be compliant with the standards.

1.3 What's in the Box

- Main Frame: PS-6200
- Power Adapter – DC12V, 5A, 60W
- RS-232C & LAN cables
- Rack Ears
- 5-pin Phoenix connectors
- Owner's manual

1.4 Product Introduction

The new **PS-6200 Presentation Switcher** is a complete, high definition A/V signal-routing solution for simple conferencing environments, including classrooms, boardrooms, and video-conference rooms. This all-in-one presentation switcher combines multi-format inputs, video matrix routing and scaling, audio matrix routing, audio insertion/extraction capabilities, as well as analog to digital (or vice versa) signal conversion, all in a single RU space enclosure. Together with PureLink's industry-renown "Seamless Switching Technology", the PS-6200 provides a simple, flexible, and high-performance video-conferencing or presentation solutions.

Hybrid Matrix Switcher

The PS-6200 delivers high-performance, seamless switching of numerous digital and analog input sources to up to three display devices such as projectors and flat-panel displays. A total of six inputs are available including HDMI, DVI (or 2nd HDMI source with use of adapter), VGA/Component, Composite Video, and 2 x 3G/HD-SDI inputs. The built-in balanced/unbalanced audio matrix router may be combined with any of the six video inputs to form an HDMI signal with embedded audio. Available outputs include HDMI, DVI (or 2nd HDMI source with use of adapter), and VGA. The HDMI and DVI ports are independent, while the VGA port produces a mirrored output of the DVI output.

Auto-Scaling with Seamless Switching

The PS-6200 offers as a standard feature, built-in auto-scaling on all the outputs – minimizing latency and providing seamless switching when multiple contrasting display devices are used. With the scaling feature built-in, the PS-6200 eliminates the cost of individual outboard scalers, and ensures the best resolution and picture quality on each display, regardless of which sources are routed.

Flexible Audio-Routing Capability

The PS-6200 adds tremendous audio-routing flexibility to the control environment with the built-in 2x2 balanced/unbalanced audio matrix router. The two balanced/unbalanced audio inputs can be combined with any video source to produce a new HDMI output signal with embedded audio. The audio outputs can be configured among four audio sources – 2 x HDMI sources and 2 x balanced/unbalanced audio sources. In addition, the audio from an HDMI source can be extracted from the digital stream and converted to an analog signal to feed a third-party processor, mixer, or codec. The return signal feeds back through the analog input, and can be embedded with any video source to produce a new HDMI output.

3G/HD-SDI Inputs

Directly route 3G/HD-SDI video signals from high-end, professional cameras and other SDI devices, eliminating need for an SDI to HDMI converter. The PS-6200 features 2 x 3G/HD-SDI inputs which support SD-SDI, HD-SDI, and 3G-SDI signal formats up to 1080p@60hz.

Auto-EDID (EDID Library & Emulation)

PureLink's legendary EDID/HDCP Management System provides EDID capture and storage, automatically assessing the format and resolution information of connected devices. Auto-EDID ensures consistent handshakes between sources, allowing proper and reliable output of content for display.

1.5 Front View

The PS-6200 chassis is mountable on 19" standard rack with brackets. On front panel, there are some function keys, and a status display window placed as shown in Figure 1-1.

<Front Panel>



(Figure 1-1)

POWER: Main power switch ON / OFF

DISPLAY: View menu and system mode

MENU: Navigate menu and control options

ENTER: Save/select desired setting

CANCEL: Revert to previous setting

1.6 Rear View

<Rear Panel>



(Figure 1-2)

DC 12V: Power (DC +12V) port

LAN: LAN (TCP/IP) port for control

RS-232C: RS-232 serial port for control

DOWNLOAD: Mini USB port for firmware update

VIDEO INPUTS : CH1: HDMI,
CH2: DVI (HDMI compatible),
CH3: VGA (Component compatible),
CH4: CVBS,
CH5: 3G/HD-SDI,
CH6: 3G/HD-SDI

VIDEO OUTPUTS : CH1: HDMI,
CH2: DVI and VGA (mirrored output)

AUDIO INPUTS: 2 x Balanced/Un-balanced analog audio (5-pin phoenix connector)

AUDIO OUTPUTS: 2 x Balanced/Un-balanced analog audio (5-pin phoenix connector)

1.7 Installation Guidelines

The following installation settings are recommended for optimal performance.

- Operational temperature should be 30° C or below
- Operational humidity should be 60% or below
- Operational environment should be dust-free and well ventilated
- Stabilized AC input power (AVR-based power supply) is highly advised

Chapter 2. Product Features & Specification

2.1 Features

PureLink's new PS-6200 Presentation Switcher is a complete, high definition A/V signal-routing solution for simple conferencing environments. Together with PureLink's fast-switching speeds, the PS-6200 provides a simple, flexible, and high-performance solution for integration into conference rooms and corporate meeting rooms.

- 6 multi-format inputs (HDMI x1, DVI x1, VGA x1, CVBS x1, 3G/HD-SDI x2)
- 19" standard rack type case (1U)
- HDCP compliant
- Enhanced quality and color of signals
- SDI inputs support SD/HD/3G-SDI signal formats up to 1080p@60Hz
- 2 channel digital output support (HDMI x1, DVI x1 and VGA x1 mirrored output)
- Built-in auto scaling on all the outputs with seamless switching
- 2x2 Balanced/un-balanced audio matrix switching
- Audio insertion, extraction and break-away
- Control through 3 different methods;
 - Control directly with front push buttons
 - Control via RS-232C COM port
 - Control via LAN (TCP/IP)
- It has an instantaneous noise protection circuit in input and output ports; therefore it can protect expensive equipment from fault caused by noises (if any).
- Convenient to change firmware through direct update by PC.

2.2 Specification

PS-6200 Frame General Specification	
Power	External Power Supply DC12V, 5A
Operational Temperature	32° ~ 117° F (0° to 47° C)
Storage Temperature	- 40° ~ 158° F (-40° to 70° C)
Humidity	0 ~ 90% non-condensing
MTBF	50,000 hours
Dimensions (W x D x H)	15.7" x 7.08" x 1.85" (400 x 180 x 47mm)
Shipping Dimensions (with cover box)	21.7" x 14.6" x 4.9" (550 x 370 x 125mm)
Rack mounting	Yes, 19" standard rack, 1RU
Weight	4.8 lbs (2.18 kg)

Shipping Weight (with accessories and cover box)	8.4 lbs (3.8 kg)
---	------------------

Functional Specification

Communication	
HDMI	HDMI, HDCP, EDID, CEC
USB	USB service port for firmware update
RS-232	2-way device control and monitoring up to 115.2k baud rate with hardware and software handshaking
LAN	TCP/IP

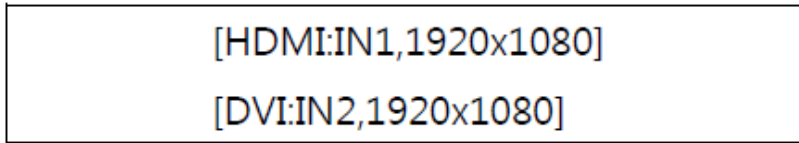
Video	
Switcher	Multi-format digital/analog source inputs, 6x2 matrix switcher
Input Signal Types	HDMI, DVI, VGA/Component, Composite, 3G/HD-SDI
Output Signal Types	HDMI, DVI, VGA
Formats	HDMI v1.3, DVI 1.0, HDCP content protection support, HD up to 1080i/1080p, computer up to UXGA/WUXGA, RGBHV, RGBS, RGSB, YPbPr, Y/C, NTSC, PAL
Input Resolutions, HDMI, Progressive	640x480@60Hz, 720x480@60Hz (480p), 720x576@50Hz (576p), 800x600@60Hz, 1024x768@60Hz, 1280x720@50Hz (720p50), 1280x720@60Hz (720p60), 1280x768@60Hz, 1280x800@60Hz, 1280x960@60Hz, 1280x1024@60Hz, 1360x768@60Hz, 1366x768@60Hz, 1400x1050@60Hz, 1440x900@60Hz, 1600x900@60Hz, 1600x1200@60Hz, 1680x1050@60Hz, 1920x1080@24Hz (1080p24), 1920x1080@25Hz (1080p25), 1920x1080@50Hz (1080p50), 1920x1080@60Hz (1080p60), 1920x1200@60Hz, 2048x1080@24Hz, plus any other resolution allowed by HDMI up to 165MHz pixel clock
Input Resolutions, HDMI, Interlaced	720x480@30Hz (480i), 720x576@25Hz (576i), 1920x1080@25Hz (1080i25), 1920x1080@30Hz (1080i30), plus any other resolution allowed by HDMI up to 165MHz pixel clock
Input Resolutions, VGA	640x480@60Hz, 800x600@60Hz, 1024x768@60Hz, 1280x720@50Hz (720p50), 1280x720@60Hz (720p60), 1280x768@60Hz, 1280x800@60Hz, 1280x960@60Hz, 1280x1024@60Hz, 1360x768@60Hz, 1366x768@60Hz, 1400x1050@60Hz, 1600x1200@60Hz, 1680x1050@60Hz, 1920x1080@60Hz (1080p60), 1920x1200@60Hz
Input Resolutions, Component	480i, 576i, 480p, 576p, 720p50, 720p60, 1080i25 (1125 lines), 1080i30, 1080p50 (1125 lines), 1080p60
Input Resolutions, Composite	480i, 576i

Input Resolutions, 3G/HD-SDI	SMPTE 425M (3G-SDI) 4:2:2 Colorspace: 1920x1080@50Hz (1080p50), 1920x1080@60Hz (1080p60); SMPTE 425M (3G-SDI) 4:4:4 Colorspace: 1280x720@50Hz (720p50), 1280x720@60Hz (720p60), 1920x1080@24Hz (1080p24), 1920x1080@25Hz (1080p25), 1920x1080@30Hz (1080p30), 1920x1080@50Hz (1080i50 or 1080sF25), 1920x1080@60Hz (1080i60 or 1080sF30); SMPTE 260M (HD-SDI): 1920x1035@60Hz; SMPTE 295M (HD-SDI): 1920x1080@50Hz (1080i50); SMPTE 274M (HD-SDI): 1920x1080@24Hz (1080p24), 1920x1080@24Hz (1080sF24), 1920x1080@25Hz (1080p25), 1920x1080@30Hz (1080p30), 1920x1080@50Hz (1080i50 or 1080sF25), 1920x1080@60Hz (1080i60 or 1080sF30); SMPTE 296M (HD-SDI): 1280x720@50Hz (720p50), 1280x720@60Hz (720p60); SMPTE 259M-C (SD-SDI): 720x480@59.94 (NTSC), 720x576@50i (PAL)
Output Resolutions	Auto, 720x480p60, 720x576p50, 1280x720p50, 1280x720p60, 1920x1080i50, 1920x1080i60, 1920x1080p50, 1920x1080p60, 800x600@60Hz, 1024x768@60Hz, 1280x1024@60Hz, 1600x1200@60Hz, 1360@768@60Hz, 1366x768@60Hz, 1400x1050@60Hz, 1920x1200@60Hz

Audio	
Switcher	2x2 multi-channel source switcher Typical of 4 source input channels;
Input Signal Types	HDMI, analog 2 -channel
Formats, Analog	Stereo 2-channel
Formats, HDMI	Dolby Digital®, Dolby Digital EX, DTS®, DTS-ES, DTS 96/24, up to 8ch PCM
Analog to Digital Conversion	24-bit 48kHz
* Typical of 2 analog output channels;	
Output Signal Type and Format	Stereo 2-channel
Digital to Analog Conversion	24-bit 48kHz
Differential	±4.0 V
* Typical of 2 HDMI output channels;	
Output Signal Types	HDMI
Formats	Dolby Digital®, Dolby Digital EX, DTS®, DTS-ES, DTS 96/24, up to 8ch PCM

Chapter 3. Operational guidelines

3.1 Main Menu



Main menu shows the current input and output switching status with resolution information.

1st line HDMI indicates output # 1 and 2nd line DVI indicates output # 2.

[HDMI: IN1, 1920x1080] means that output # 1 (HDMI) is connected to input # 1 (IN1) and its resolution is 1920 x 1080.

[DVI: IN2, 1920x1080] means that output # 2 (DVI) is connected to input # 2 (IN2) and its resolution is 1920 x 1080.

* On this main menu, you can select output # using ▲ (up) and ▼ (down) buttons and navigate through inputs using ◀ (left) and ▶ (right) buttons.

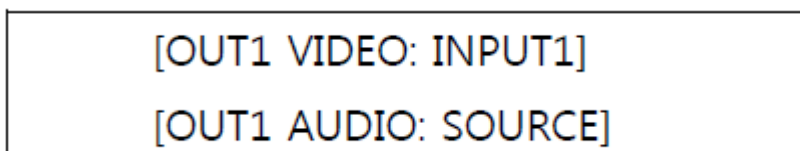
3.2 Function Menu

Press a function button to view the sub-menu and available sub-menu list follows;

1. Create Mode
2. Output Timing
3. Balance Audio Set
4. Input EDID Load
5. RS232 Config
6. Network Config
7. Product ID Set
8. Factory Reset

Use ▲ (up), ▼ (down) and Enter buttons to select menu.

1. Create Mode



On this menu, you can configure outputs' video and audio input selection.

Use ▲ (up) and ▼ (down) buttons to select outputs' video and audio settings (Output #1 video, output #1 audio, output #2 video, and output #2 audio).

Once you select a setting, use ◀ (left) and ▶ (right) buttons to configure its parameter and press Enter button to save.

A list of available parameter for the video and audio settings follows;

Video: Input # 1 ~ 6

Audio: Source, Balanced In1, Balanced In2, and Off.

* On audio, Source indicates selected video source's embedded audio.

2. Output Timing

[OUT1 TIME FORMAT]

[→8.1920x1080p 60Hz]

On this menu, you can configure outputs' resolution.

Use ▲ (up) and ▼ (down) buttons to select output# (Output #1 and output #2)

Once you select output #, use ◀ (left) and ▶ (right) buttons to configure its parameter and press Enter button to save.

- Output Timing List

1	Auto	7	1080i (60Hz)	13	UXGA (1600x1200@60Hz)
2	480p (60Hz)	8	1080p (50Hz)	14	1360x768@60Hz
3	576p (50Hz)	9	1080p (60Hz)	15	1366x768@60Hz
4	720p (50Hz)	10	SVGA (800x600@60Hz)	16	1400x1050@60Hz
5	720p (60Hz)	11	XGA (1024x768@60Hz)	17	1920x1200@60Hz
6	1080i (50Hz)	12	SXGA (1280x1024@60Hz)		

3. Balanced Audio Set

[BALANCE1:OFF]

[BALANCE2:INPUT1]

On this menu, you can configure Balanced audio outputs' audio input selection.

Use ▲ (up) and ▼ (down) buttons to select output # (Balanced audio output # 1 and balanced audio output #2)

Once you select output #, use ◀ (left) and ▶ (right) buttons to select audio input (Video input#1's embedded audio, video input# 2's embedded audio, balanced audio input# 1, balanced audio input# 2, and off) and press Enter button to save.

4. Input EDID Load

[→INPUT1 HDMI EDID]
[→2.HD1080p 60Hz 2CH]

On this menu, you can configure EDID on the input.

Use ▲ (up) and ▼ (down) buttons to select input # (Input #1, input #2, and input #3).

Once you select input #, use ◀ (left) and ▶ (right) buttons to configure its parameter and press Enter button to save.

- EDID List

1	External EDID	7	1280x768@60Hz	13	1680x1050@60Hz
2	HD1080p 2CH	8	1280x1024@60Hz	14	1920x1200@60Hz
3	HD1080p Multi	9	1360x768@60Hz		
4	HD1080i 2CH	10	1440x900@60Hz		
5	800x600@60Hz	11	1600x900@60Hz		
6	1024x768@60Hz	12	1600x1200@60Hz		

5. RS232 Config

[RS232C CONFIG]
Baud Rate:19200

On this menu, you can configure RS232 communication settings.

Use ▲ (up) and ▼ (down) buttons to select communication settings (Baud rate, parity, stop bit, and data bits).

Once you select a setting, use ◀ (left) and ▶ (right) buttons to select parameter and press Enter button to save.

6. Network Config

1.IP Address
2.Gateway Set

On this menu, you can configure network communication settings.

Use ▲ (up) and ▼ (down) buttons to select communication settings (IP address, gateway set, subnet mask, and mac address).

[- IP EDIT -]
192.168.000.002

Once you select a setting, use ◀ (left) and ▶ (right) buttons to select parameter and press Enter button to save.

7. Product ID

[PRODUCT ID]
Set:1 Edit:1

On this menu, you can configure router's ID.

Use ▲ (up) and ▼ (down) buttons to set the value and press Enter button to save.

8. Factory Reset

[FACTORY RESET]
RESET:ENTER KEY

On this menu, you can reset setting back to factory default.

Chapter 4. Communication Code Configuration

4.1 Control Programmer's Guide (Code Structure and Examples)

This section is designed for programmers who wish to create their own control programs using the command code. All PureLink digital matrix routers provide a simple character stream control used by external control devices attached to a PureLink device. Command codes are used primarily for control, during system installation and setup, and for diagnostic purposes.

4.2 Overview

Command code is a set of alphanumeric characters that combine to form control commands. Command code strings are entered into a terminal emulation program (such as windows HyperTerminal) running on an external control device. The control device (PC, third-party controller) sends the commands to the system. Control devices must be able to send and receive ASCII or HEXA code via an RS-232 or Ethernet port.

4.3 Command Code Formats

A command code is a series of command characters and numbers used to send commands to the system. Commands include basic formulas for creating and disconnecting switches, as well as for verifying the status of switches.

In a command code, each character is either general command (e.g., C for connect) or an identifier that indicates what the following number designates (e.g., "O" and the number following it designate an "output number"). The command code *01CI01O01! Can be interpreted as follows: (*) Starting the command code (01) Router ID is 01 (C) Create connection on (I01) Input 01 to (O01) Output 01 (!) take the command. For a complete list of command characters and their functions, see pages 17.

Ack value (Acknowledge value: Response from Pure Link device) will be echoed back to the terminal screen as the unit accepts them. When a command is successfully executed, all of the characters appear containing the character "s" which stands for status. For example,

Ex 1) Command (Connect Input 1 to Output 1)

```
*01CI01O01! ↵
```

Ack value

```
*01sC I01O01!
```

Ex 2) Command (Check Input connection status on Output 2)

```
*01?O02! ↵
```

Ack Value

```
*01s? I03O02!
```

4.4 General Rules for Command Codes

The commands are coded in ASCII and HEXA. Please refer to Table 3.1 on pg. 17 for detailed descriptions of keys and functions. A basic command code setup is shown below;

Ex) *01CI01O01!↵

Start (*) + Router ID (01) + Command (C) + Input number (I01) + Output number (O01) + End (!) + Enter (↵)

- ▶ A command line allows execution of only one command. Multiple commands require execution of multiple strings; one command per string.
- ▶ All s begin with * (Start) byte.
- ▶ All s end with ! (End) byte.
- ▶ All s will be executed when ↵ (Enter) is entered.
- ▶ The correct Router ID must be entered in a command code. Systems will not react to the command if a wrong Router ID is entered. The Factory Default Router ID is set to 01 and the universal Router ID is 99. Systems will react to the command whenever universal Router ID is entered in command code.
- ▶ Command codes typically are not case-sensitive.
- ▶ ***Audio Command is only available for MXA series product***
- ▶ To specify multiple inputs and outputs, enter a "," (Comma) between numbers.
(Ex., *01CI01O01,02,03!↵: Connects Input 01 to Output 01, 02, and 03)
- ▶ Use - (Hyphen) for range connection.
(EX., *01CI01O01-04!↵: Connects Input 01 to Output 01,02,03, and 04)

Table 4.1 Command Codes Characters Table

The table below shows command code characters (keys), which are used to generate control commands, their functions, and short function descriptions.

Key		Function	Description and Example	Byte
HEX	ASCII			
0x2A	*	Start the command	Header Code	1
0x21	!	End the command	Tail Code	1
	↵	Execute the command	Execute the command	
0x43 0x63	C C	Connect (Video and Audio)	Initiates a Connect (switch) command for both Video and Audio; this must precede input and output specification	1
0x3F	?	Status	Status command; this must precede input and output specification	1
0x44 0x64	D D	Disconnect	Disconnect command for both Video and Audio; this must precede input and output specification	1
	,	Space	Separates the numbers within entries that contain multiple numbers	1
	-	Range	Specifies a range of numbers in entries containing multiple numbers	1
0x49 0x69	I I	Router ID check	Router ID check command; check router's current ID number	1
	OT	Output Resolution Setting 00: AUTO 01: 720x480p 60Hz 02: 720x576p 50Hz 03: 1280x720p 50Hz 04: 1280x720p 60Hz 05: 1920x1080i 50Hz 06: 1920x1080i 60Hz 07: 1920x1080p 50Hz 08: 1920x1080p 60Hz 09: 800x600 60Hz 10: 1024x768 60Hz 11: 1280x1024 60Hz 12: 1600x1200 60Hz 13: 1360x768 60Hz 14: 1366x768 60Hz 15: 1400x1050 60Hz		

		16: 1920x1200 60Hz		
	?version	Firmware version check	Firmware version check command; *01?version! ↵	
0x4E 0x6E	N N	Networking setting	Network configuration setting command: - IP Setting *01NIP125.135.199.004! ↵ - Subnet Mask Setting *01NSM255.255.255.000! ↵ - Gate Way Setting *01NGW192.168.000.001! ↵ - MAC Address Setting *01NMA00.50.C2.B0.20.05! ↵ - Port Number Setting *01NPN3000! ↵ - Network Information *01NNI000! ↵	1
0x48 0x68	H H	Connection check	Router communication connection check command: *255H000! ↵	1

4.5 Command Ack (Acknowledge) Value Response

When command codes are entered into a terminal emulation program (such as HyperTerminal) and are accepted by the system, they respond back to the terminal screen one at a time, as noted below in the table. The complete command has executed successfully when all of the entered characters including “s” which stands for status, appear. If a command character is not accepted, a different character than the one entered appears and all or part of the command has not been executed.

Ack (Acknowledge) Value Response Table

The following table shows ack value response characters along with their descriptions and meanings, which may appear instead of the initially entered character or number. If these characters appear, all or part of the command has not been executed.

Table 3.2 Descriptions of Acknowledge (ACK) Signals

Ack value	Description
Input 1 is not connected	No information in each channel.
Command Code Error	Indicates that system has rejected all or part of the command
Router ID Error	Indicates that the wrong ID number was entered

Command Code Ack Value Examples

Command Code Entered	Ack Value as appears in the control program	Explanation of Result
*01CI01O01! ↵	*01sC I01O01 !	The command was successfully executed
*01CO01! ↵	Command Code Error	The command was not executed because the input number was not included
*01CI01O01 ↵	Command Code Error	The command was not executed because “!” (End) was not included
*300CI01O01! ↵	Router ID Error	The command was not executed because the actual Router ID and entered Router ID did not match

4.6 Example of command codes;

1) Video create command

EX) *01CI02O01,I06O02!<CR>

* : START CODE

01 : ROUTER ID

C : COMMAND

I02 : INPUT PORT NUMBER

O01 : OUTPUT PORT NUMBER

, : PORT Separator

! : END CODE

<CR> : Carriage return (HEX CODE: 0x0D)

2) Video outputs' embedded audio select command

EX) *01ACO01A00,O02A02!<CR>

* : START CODE

01 : ROUTER ID

AC : COMMAND

O02 : OUTUT PORT NUMBER

A00 : AUDIO INPUT SELECT

A00:SOURCE (selected video's embedded audio)

A01:BALANCED IN1

A02:BALANCED IN2

A03:OFF

, : PORT Separator

! : END CODE

<CR> : Carriage return (HEX CODE: 0x0D)

3) Output resolution select command

EX) *01TCO01T16,O02T00!<CR>

* : START CODE

01 : ROUTER ID

TC : COMMAND

O01 : OUTUT PORT NUMBER

T00 : RESOLUTION SELECT

T00:AUTO

, : PORT Separator

! : END CODE

<CR> : Carriage return (HEX CODE: 0x0D)

- Output Timing List

T00	Auto	T06	1080i (60Hz)	T12	UXGA (1600x1200@60Hz)
T01	480p (60Hz)	T07	1080p (50Hz)	T13	1360x768@60Hz
T02	576p (50Hz)	T08	1080p (60Hz)	T14	1366x768@60Hz
T03	720p (50Hz)	T09	SVGA (800x600@60Hz)	T15	1400x1050@60Hz
T04	720p (60Hz)	T10	XGA (1024x768@60Hz)	T16	1920x1200@60Hz
T05	1080i (50Hz)	T11	SXGA (1280x1024@60Hz)		

4) Balanced audio output select command

EX) *01BCO01A03,O02A04!<CR>

* : START CODE

01 : ROUTER ID

BC : COMMAND

O02 : BALANCED AUDIO OUTUT PORT NUMBER

A00 : AUDIO INPUT SELECT

A00:OFF

A01:INPUT1 (HDMI)

A02:INPUT2 (DVI)

A03:BALANCED IN1

A04:BALANCED IN2

, : PORT Separator

! : END CODE

<CR> : Carriage return (HEX CODE: 0x0D)

5) Input # 3 video format select command

EX) *01PC00!<CR> ==> VGA SELECT
 *01PC01!<CR> ==> COMPONENT SELECT

* : START CODE

01 : ROUTER ID

PC : COMMAND

00 : 00-VGA

01-COMPONANT

! : END CODE

<CR> : Carriage return (HEX CODE: 0x0D)

6) RS232 Baudrate select command

EX) *01@001!<CR>

* : START CODE

01 : ROUTER ID

@ : COMMAND

001 : BAUD RATE SELECT

001:19200

002:38400

003:57600

004:115200

! : END CODE

<CR> : Carriage return (HEX CODE: 0x0D)

7) Firmware version check command

EX) *01?version!<CR>

* : START CODE

01 : ROUTER ID

?version : COMMAND

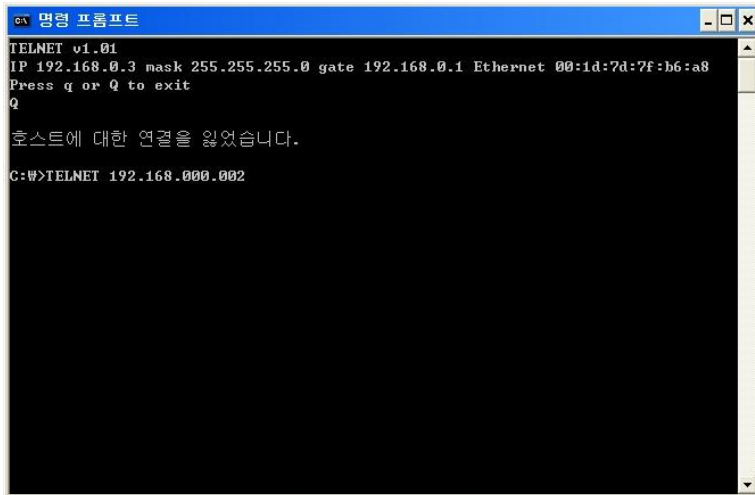
! : END CODE

<CR> : Carriage return (HEX CODE: 0x0D)

4.7 LAN CODE CONFIGURATION

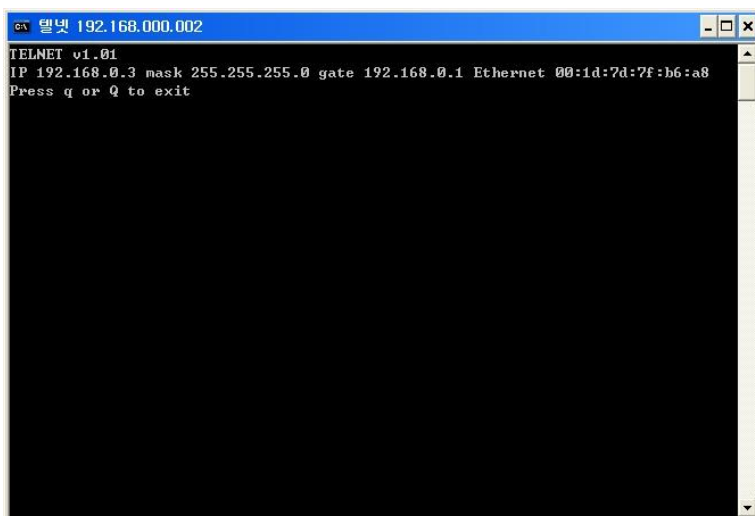
Using TELNET protocol with LAN(TCP/IP)

The PS-6200 presentation switcher can be controlled from remote locations through the LAN port using WINDOWS XP DOS prompts, hyper-terminal, or TELNET program (the control code is fully compliant with RS-232C).



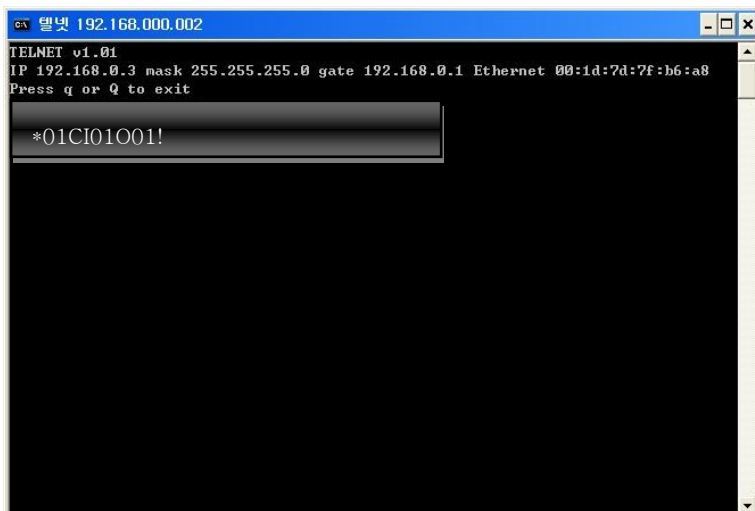
```
명령 프롬프트
TELNET v1.01
IP 192.168.0.3 mask 255.255.255.0 gate 192.168.0.1 Ethernet 00:1d:7d:7f:b6:a8
Press q or Q to exit
Q
호스트에 대한 연결을 잃었습니다.
C:\W>TELNET 192.168.000.002
```

Enter TELNET <Router IP
Address> in the DOS
prompt



```
명령 192.168.000.002
TELNET v1.01
IP 192.168.0.3 mask 255.255.255.0 gate 192.168.0.1 Ethernet 00:1d:7d:7f:b6:a8
Press q or Q to exit
```

Message indicating TELNET
connection will appear



```
명령 192.168.000.002
TELNET v1.01
IP 192.168.0.3 mask 255.255.255.0 gate 192.168.0.1 Ethernet 00:1d:7d:7f:b6:a8
Press q or Q to exit
*01CI01O01!
```

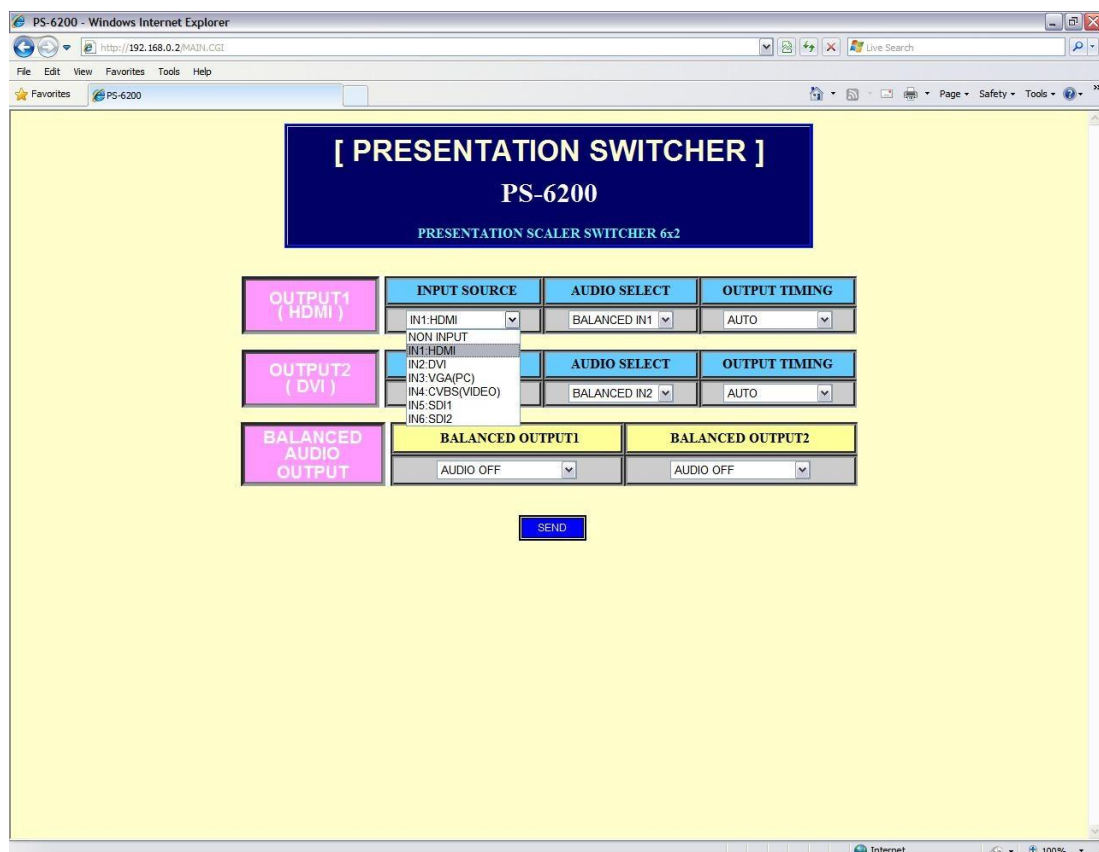
Switching command code
Input #1 to output #1
Send " *01CI01O01!
Router will send response:
*01sC I01O01!

4.8 WEB INTERFACE

The PS-6200 presentation switcher can be controlled from remote locations through the LAN port using a PC/Laptop.

1. Please configure network settings (Gateway address, IP address, Subnet mask, Mac address) of PS-6200 via front panel of the unit or via RS232 commands according to the network environment.
2. Please open a web browser on the PC/Laptop and type IP address you configured on step 1.

On this example, we set PS-6200's IP address to 192.168.0.2



<Video outputs' input video source select>

[PRESENTATION SWITCHER]
PS-6200
PRESENTATION SCALER SWITCHER 6x2

OUTPUT1 (HDMI)	INPUT SOURCE	AUDIO SELECT	OUTPUT TIMING
	IN1:HDMI	BALANCED IN1	AUTO

OUTPUT2 (DVI)	INPUT SOURCE	AUDIO SELECT	OUTPUT TIMING
	IN2:DVI	BALANCED IN2	AUTO

BALANCED AUDIO OUTPUT	BALANCED OUTPUT1	BALANCED OUTPUT2
	AUDIO OFF	AUDIO OFF

SEND

<Video outputs' input audio source select>

[PRESENTATION SWITCHER]
PS-6200
PRESENTATION SCALER SWITCHER 6x2

OUTPUT1 (HDMI)	INPUT SOURCE	AUDIO SELECT	OUTPUT TIMING
	IN1:HDMI	BALANCED IN1	AUTO

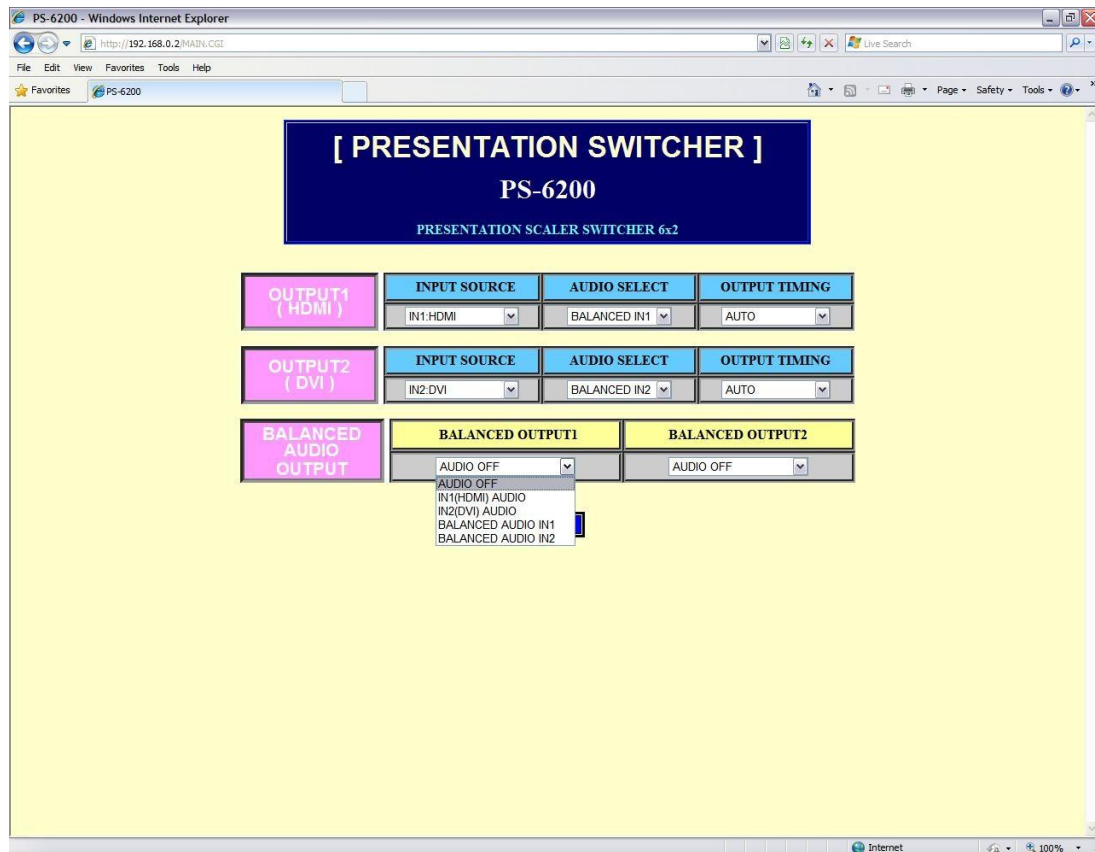
OUTPUT2 (DVI)	INPUT SOURCE	AUDIO SELECT	OUTPUT TIMING
	IN2:DVI	BALANCED IN2	AUTO

BALANCED AUDIO OUTPUT	BALANCED OUTPUT1	BALANCED OUTPUT2
	AUDIO OFF	AUDIO OFF

SEND

AUTO
720*480P @60
720*576P @50
1280*720P @50
1280*720P @60
1920*1080i @50
1920*1080i @60
1920*1080P @50
1920*1080P @60
800*600 @60
1024*768 @60
1280*1024 @60
1600*1200 @60
1360*768 @60
1366*768 @60
1400*1050 @60
1920*1200 @60

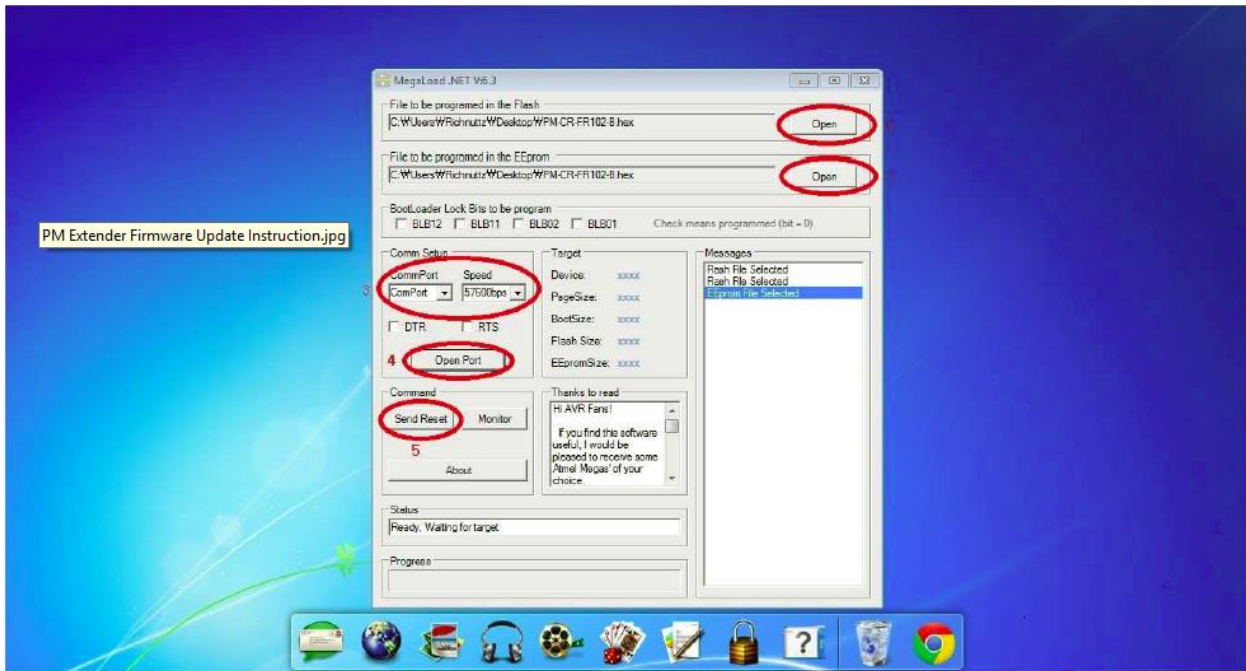
<Video outputs' video resolution select>



<Audio matrix outputs' input audio select>

Chapter 5. Firmware Update Instruction and Warranty Information

5.1 Firmware Update Instruction



- A. Please install Megaload firmware update program to your PC
- B. Plug firmware update USB cable between the unit and your PC

*Make sure the unit is powered on

- C. Run Megaload program

Firmware update procedure follows;

- 1 & 2 . Load firmware file on both Flash and EEPROM.
3. Setup comport # and speed.

*Baudrate speed must be matched with baud rate speed on PS-6200 unit

4. Open the port
5. Click send reset button

It may take few minutes to update the firmware

Chapter 6. Additional Information

6.1 Manufacturer's Warranty (2-Year)

Dtrovision warrants this PS-6200 presentation switcher to be free from defects in workmanship and materials, under normal use and service, for a period of two (2) year from the date of purchase from Dtrovision or its authorized resellers.

If the product does not operate as warranted during the applicable warranty period, Dtrovision shall, at its option and expense, execute one of the following as necessary:

1. Repair the defective product or part
2. Deliver to customer and equivalent product or part to replace the defective item
3. Refund to customer the purchase price paid for the defective product

All products that are replaced become the property of Dtrovision, LLC. Replacement products may be new or reconditioned. Repaired or replacement products or parts come with a 90-day warranty or the remainder of the warranty period. Dtrovision shall not be responsible for any software, firmware, information, or memory data loss of contained in, stored on, or integrated with any products returned to Dtrovision for repair under warranty.

6.2 Customer Service

Any customer service inquiries can be submitted electronically through the Q&A form on our website (www.purelinkav.com).

For immediate assistance please contact us at (201) 488-3232 to reach our customer care or tech support team.