

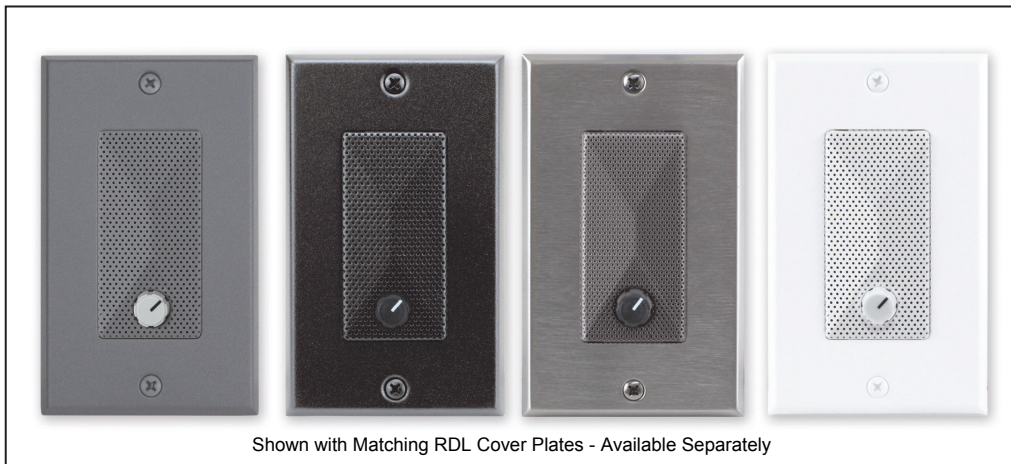


RDL[®]
Radio Design Labs

SPECIALISTS IN PRACTICAL PRECISION ENGINEERING™

ACCESSORIES

Models D-PSP1A, DB-PSP1A, DG-PSP1A, DS-PSP1A Decora-Style Active Loudspeaker - Format-A



Shown with Matching RDL Cover Plates - Available Separately

- Exceptional Audio Quality for Ultra-Compact Size
- 2 Watt RMS Audio Amplifier
- Compressor/Limiter Prevents Clipping
- Connects to Format-A Sender using Twisted-Pair Cable
- Powered from RDL Twisted Pair Format-A Sender
- Front-Panel Gain Adjustment
- Acoustically Optimized Decora Enclosure
- Fidelity Comparable to Larger Drivers
- Hemispherical Dispersion Mounted In Wall or Flat Surface

The D SERIES-PSP1A is part of the group of versatile wall-mounted products from Radio Design Labs. The standard mounting case can be directly fastened in North American electrical boxes or in RDL International wall boxes.

APPLICATION: The D SERIES-PSP1A is a compact active loudspeaker that delivers rich, detailed sound in Decora-compatible wall or chassis mounts. It is a single-pair audio amplifier module compatible with RDL Format A twisted pair products. The -PSP1A receives audio and 24 Vdc power through a rear-panel RJ45 jack. A rear-panel switch set during installation determines which of the three FORMAT-A pairs is amplified. Amplification is provided by a high-efficiency Class D power stage with audio filtering tailored for crisp, pleasant audio clarity. The high-efficiency Class D output stage produces negligible heat for all levels of expected voice or music modulation. The amplified output level is controlled by a front-panel volume control. The -PSP1A includes an analog compressor/limiter that makes higher sound output levels possible without clipping.

The driver is constructed of materials found in premium larger speakers. The unique steel enclosure provides full baffling in a tightly sealed rigid structure. This produces sonic presence within an extended frequency range expected from larger speakers. Internal filtering rolls off out-of-band frequencies to reduce distortion and increase peak power capability. Dispersion covers a spherical area of nearly 180 degrees with the speaker mounted in a wall.

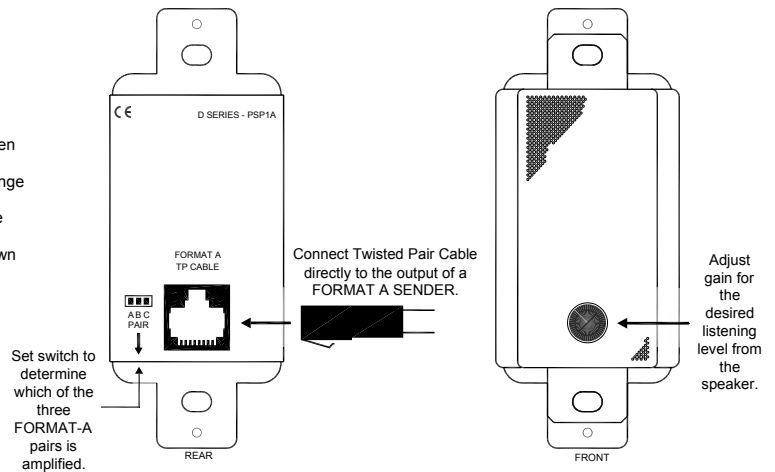
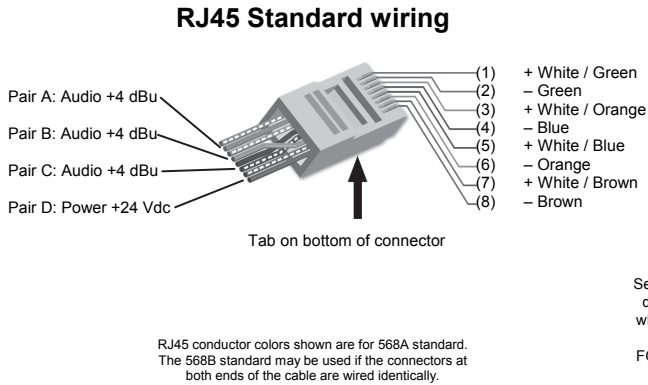
Models are available with grills in black (DB-PSP1A), white (D-PSP1A), gray (DG-PSP1A) or stainless steel (DS-PSP1A).

ACCESSORIES

Models D-PSP1A, DB-PSP1A, DG-PSP1A, DS-PSP1A Decora-Style Active Loudspeaker - Format-A

Installation/Operation

EN55103-1 E1-E5; EN55103-2 E1-E4; EN60065
 Typical Performance reflects product at publication time exclusive of EMC data, if any, supplied with product. Specifications are subject to change without notice. This product is Professional Apparatus.



TYPICAL PERFORMANCE

Input:
 Input Connection:
 Format-A Signal Pair Used:
 Gain Adjustment:
 Maximum SPL:
 Frequency Range:
 CMRR:
 Power Requirement:
 Ambient Operating Environment:
 Dimensions:

RDL Format-A
 RJ45
 Switch-selectable A, B, or C (Rear-panel)
 Single-turn audio taper (Front-panel)
 81 dB
 150 Hz to 20 kHz, nominal
 > 80 dB (50 Hz to 120 Hz)
 24 Vdc @ 55 mA (Idle); 100 mA (maximum), Ground-referenced
 0° C to 40° C Maximum; 20° C Recommended
 Height: 4.13 in. 10.49 cm; Width: 1.7 in. 4.32 cm; Depth: 2.05 in. 5.21 cm

