

FLAT-PAK™ SERIES Models FP-NML2 & FP-NML2P Network to Mic/Line Interface



- Adapts Standard Audio Amplifiers to a Dante Network
- Converts Two Dante Network Audio Signals to Professional Line Level
- Each Output is Switch-Selectable for Mic or Line Level
- Line-Level Outputs Provide +4 dBu with > 18 dB Headroom
- Exceptional Low-Noise and Low-Distortion Performance
- Crosstalk is Below the Noise Floor
- 24 Vdc Pass-Through Jack for Power Supply Sharing with RDL Amplifiers (FP-NML2)
- High Resolution 24 Bit Digital to Analog Conversion
- Legendary RDL Analog Filtering Enhances Superb Audio Performance
- Outputs Mute when Digital Audio Inputs are Inactive
- Normal or Hot-Standby Operation from PoE (Model FP-NML2P)
- Equipped for Rack Mounting or Surface Mounting

The FP-NML2 modules are Dante audio network interface products compatible with mic-level or line-level audio equipment inputs. These modules are designed to be mounted in equipment racks, closets, conference tables and on shelves or backboards in commercial/industrial installations.

APPLICATION: The FP-NML2 is a high quality converter that provides professional line-level outputs from two Dante network audio channels. Each line output provides +4 dBu balanced for a network digital audio level of -18 dBFS. The professional output directly interfaces with other professional and commercial equipment without the need for additional gain. Crosstalk is below the noise floor between all outputs across the entire audio spectrum. The noise floor is better than 80 dB below operating level with greater than 18 dB of headroom. Each output is equipped with a recessed mic/line switch that provides 50 dB of attenuation to feed the microphone input of a mixer-amplifier or other equipment with mic inputs.

The FP-NML2 is powered from an external 24 Vdc power supply, available separately. The FP-NML2P is equipped to operate from a PoE enabled network switch. The FP-NML2P will reserve power from the switch even while being powered from an external 24 Vdc supply. If PoE power and an external 24 Vdc supply are both feeding an FP-NML2P, the unit will run from the external supply and will seamlessly switch over to PoE power upon loss of the external supply.

The FP-NML2 includes a dc output jack and extension cable that allows it to be operated from a common power supply with RDL FLAT-PAK amplifiers. One audio output connects to the FLAT-PAK amplifier input, and the second output may be connected to an additional amplifier.

The FP-NML2's superior performance specifications make it ideally suited to the most demanding installations, and an exceptional value in commercial networked audio systems.

The FP-NML2 is constructed in a durable, professional all-metal enclosure suitable for free-standing, surface-mounted or rack-mounted operation. This full-featured product is engineered and manufactured in the U.S.A for continuous duty in demanding installations. Built to last. Built to outperform.

FLAT-PAK™ SERIES

Models FP-NML2 & FP-NML2P

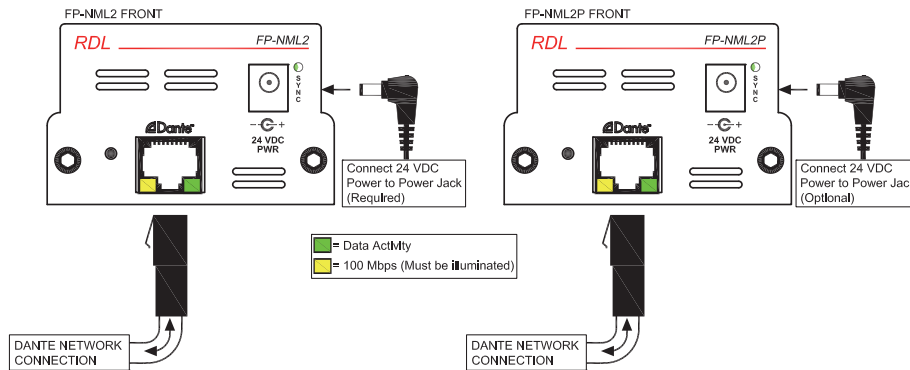
Network to Mic/Line Interface

Installation/Operation

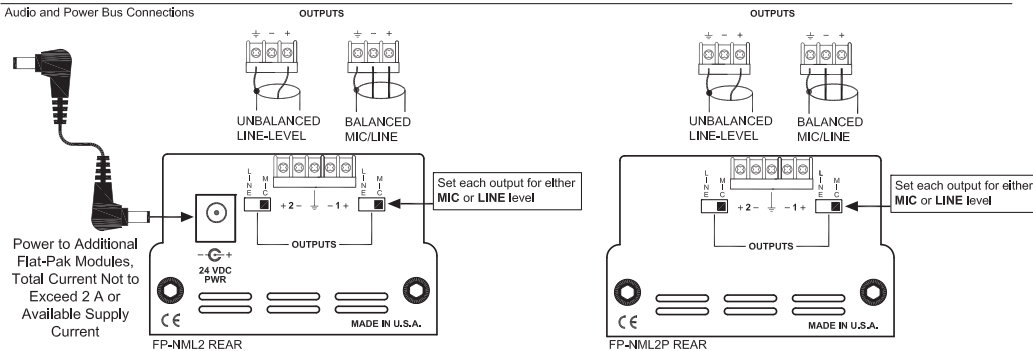


EN55103-1 E1-E5; EN55103-2 E1-E4
Typical Performance reflects product at publication time exclusive of EMC data, if any, supplied with product. Specifications are subject to change without notice.

Network and Power Connections



Audio and Power Bus Connections



TYPICAL PERFORMANCE

Network Connector: RJ45 with Link and Speed indicators
Digital Audio Ethernet Protocol: Dante
Transmission Rate: 100 Mbps
Sample Rates Supported: 44.1 kHz, 48 kHz (default)
Bit Depth Supported: 24 bits

Audio Operating Levels: -20 dBFS = +4 dBu
Outputs (2): Balanced, detachable terminal block
Output Level: +4 dBu (nominal)
Output Impedance: 150 Ω balanced; 75 Ω unbalanced
Frequency Response: 20 Hz to 20 kHz (± 0.5 dB)
THD+N: < 0.1%

Noise below +4 dBu:
Crosstalk:
Headroom above +4 dBu:
Indicators (3):
Power Connections (2):
Ambient Operating Environment:
Power Requirement:
PoE (FP-NML2P):
Dimensions:
Package Type:
Package Dimensions:
Shipping Weight:
WEEE weight:
Tariff code:

< -80 dB (output active); < -95 dB (outputs muted)
< 90 dB (1 kHz); < 80 dB (20 Hz to 20 kHz)
> 18 dB
Ethernet Link and Speed, SYNC
Power Jack; Detachable Terminal Block
0° C to 40° C
24 Vdc @ 100 mA, or PoE (FP-NML2P)
Class 0, IEEE 802.3af
4.85" (12.3 cm) W; 1.75" (4.45 cm) H; 3.25" (8.26 cm) D
Cardboard Box
4.375 x 4.8 x 2.25 in.
0.791 lbs. (FP-NML2); 0.816 (FP-NML2P)
0.645 lbs. (FP-NML2); 0.67 (FP-NML2P)
8517.18.0050