

General Description

The DR6 is a fully customizable touchscreen remote for the HAL family. It supports multiple pages or tabs and any set of levels, toggles, selectors and/or commands. Drag, drop and resize controls any way that's desired. Use custom background images and logos in full-color on the 7-inch LCD display.

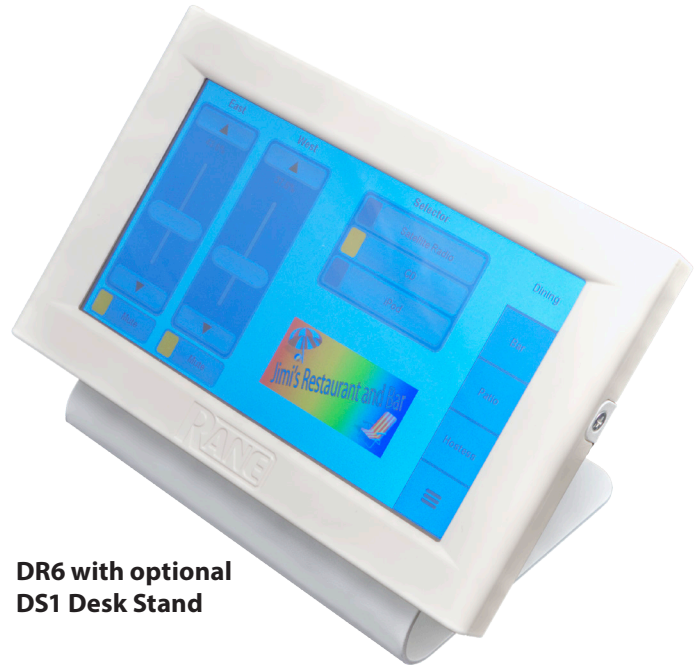
Screw the included wall-mount bracket over U.S. or international electrical boxes, or flush mount the 3/4" thick DR6 with a 2-inch (5 cm) square hole in the wall to accommodate the cable. The optional DS1 desk stand accessory (shown) allows the DR6 to rest or mount on a horizontal surface. The optional RB1 rack bracket securely installs a DR6 into a 19" equipment rack.

The included midspan power injector (not PoE) connects shielded CAT 5e (or better) cables between any HAL and the DR6 to deliver communications and the extra power needed for the display.

Optional, on-screen User Access logins secure management pages from public or staff use, and a programmable ambient light sensor automatically dims the backlight.

The Control Page Designer in Halogen 5.0 allows you to create one set of pages and use them in a web control design, DR6 display or both.

See the HAL Installation Manual or the Halogen software Help for all DR6 instructions. Information on HAL, Halogen and peripherals is available at rane.com/hal.

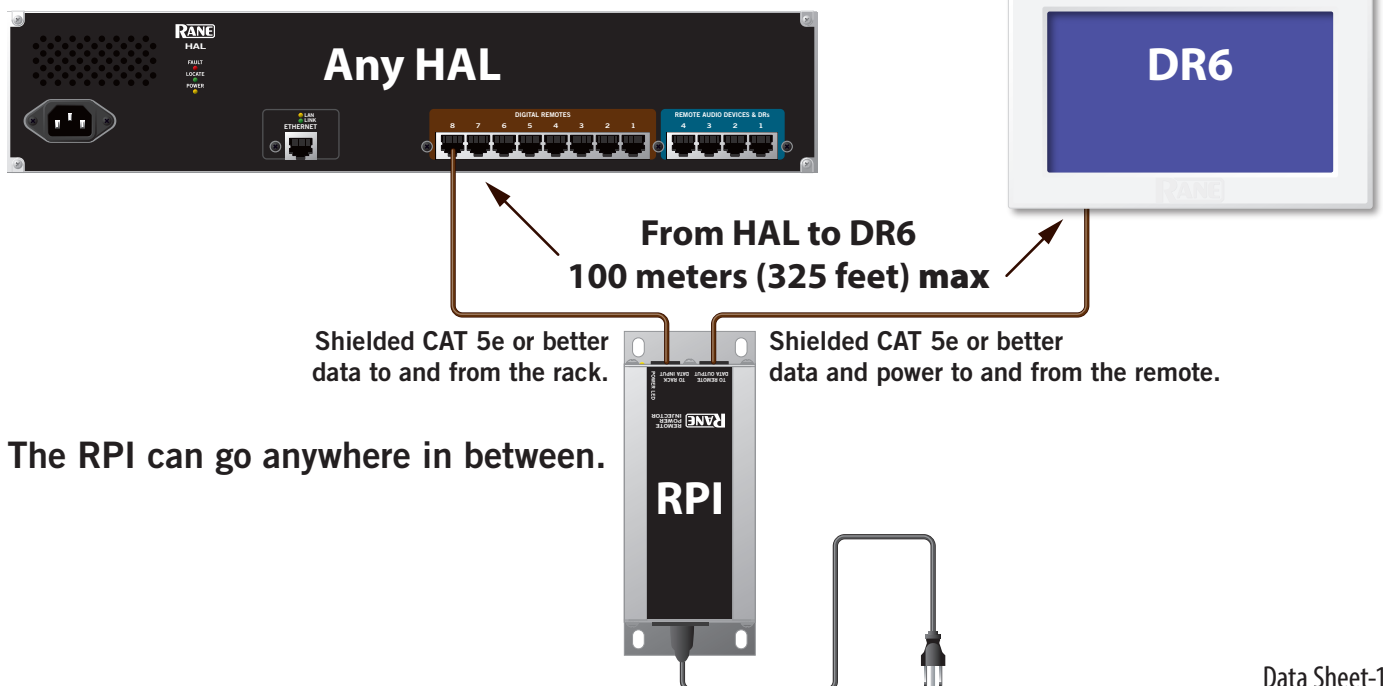


**DR6 with optional
DS1 Desk Stand**



**DR6 with optional
RB1 Rack Bracket (3U)**

DR6 Wiring



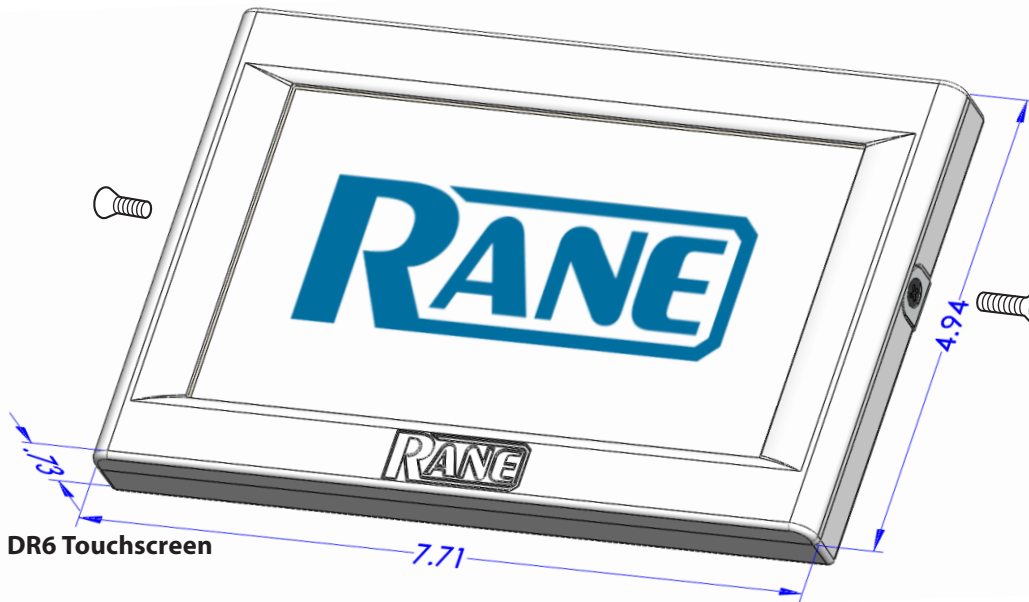
The RPI can go anywhere in between.

DR6

TOUCHSCREEN REMOTE

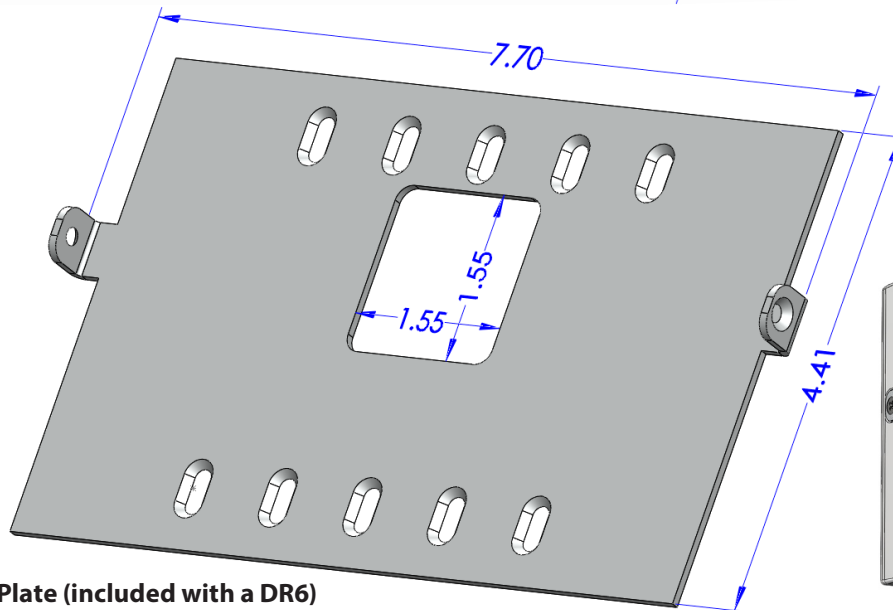


All the items on this page are included with the DR6.

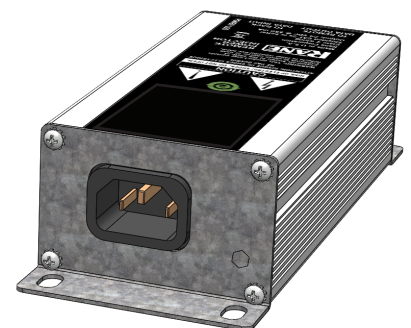
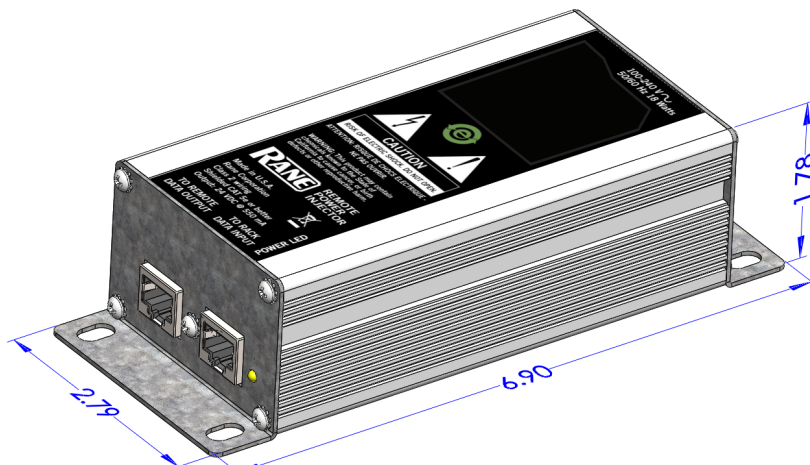
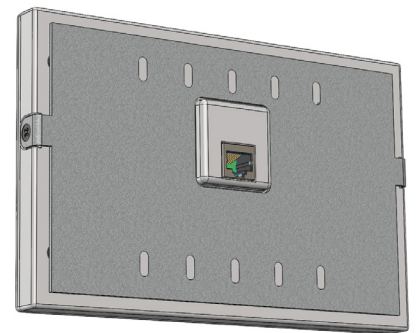


Includes (2) Torx T10 screws to mount the DR6 to the Wall Plate or the DS1 Desk Stand.

The assembled rear view showing the CAT 5 cable connection is shown below. Includes (4) #6-32x7/8" screws to attach to a 1-, 2- or 3-gang US electrical box, or to the RB1 Rack Bracket. Includes (4) #6-20x1-1/4" drywall screws with anchors to mount directly on a wall. (1.55" square hole required).

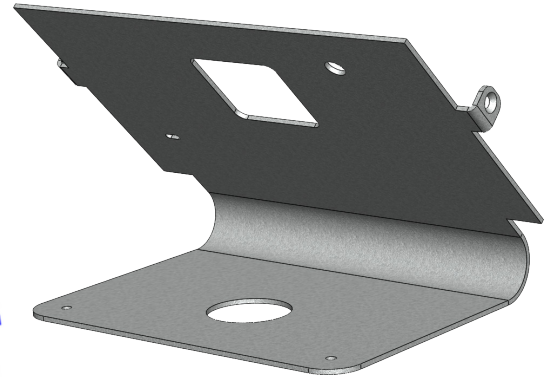
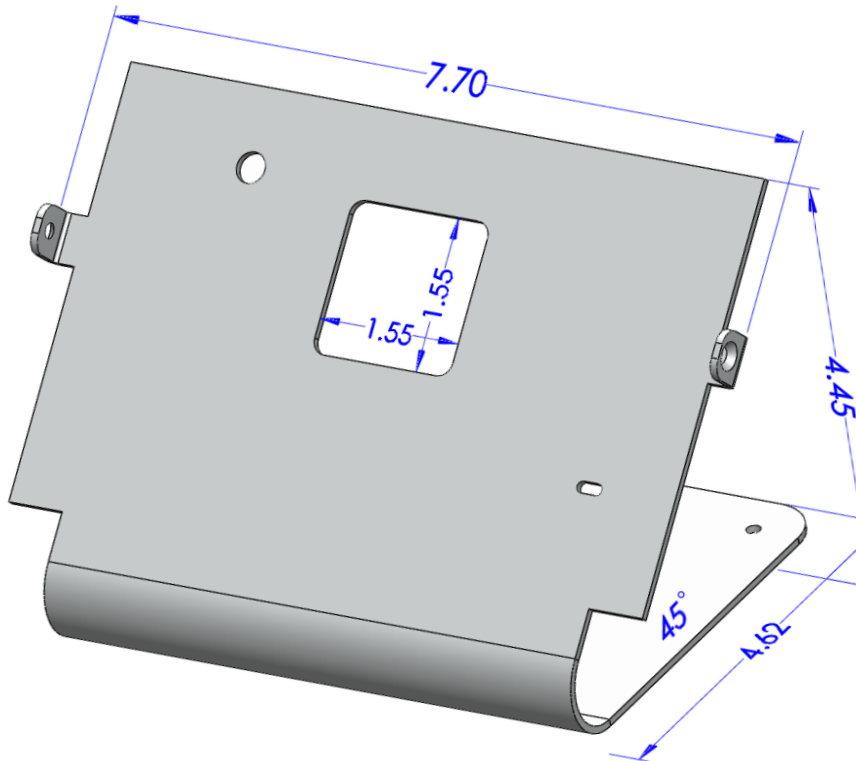


DR6 Wall Plate (included with a DR6)



RPI Remote Power Injector (included with a DR6) [not a Power-over-Ethernet injector]. IEC power cable included.

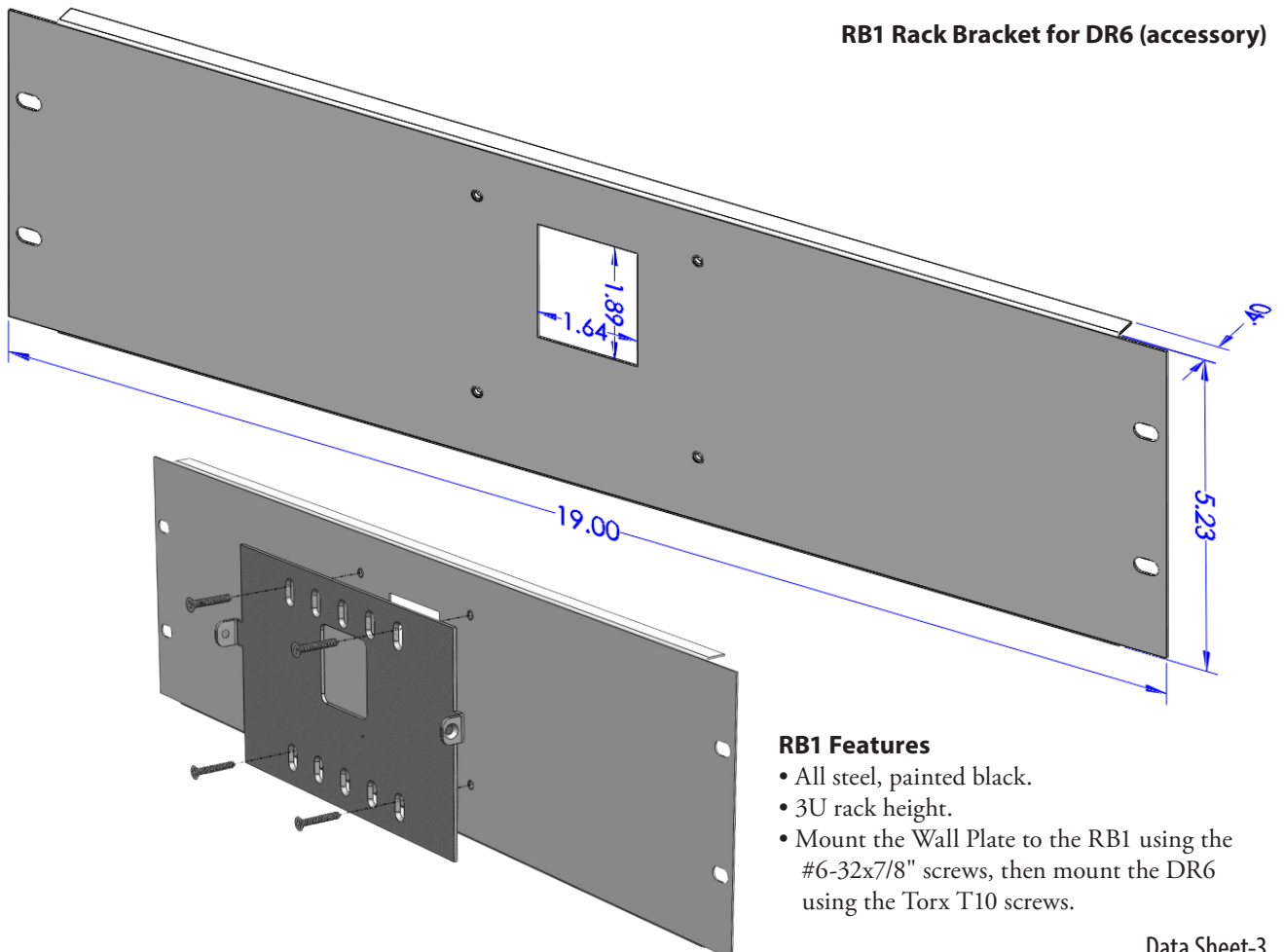
DS1 Desk Stand for DR6 (accessory)



DS1 Features

- All steel, painted white.
- Rubber bottom protects the desktop.
- Kensington security hole.
- Holes in the bottom to fasten to a desktop.
- Larger hole in bottom to thread CAT 5 cable through the desktop.

RB1 Rack Bracket for DR6 (accessory)



RB1 Features

- All steel, painted black.
- 3U rack height.
- Mount the Wall Plate to the RB1 using the #6-32x7/8" screws, then mount the DR6 using the Torx T10 screws.

DR6 Specifications

Parameter	Specification	Limit	Conditions/Comments
Display			
...Size	3.38" x 6.06"		8.6 x 15.4 cm
...Resolution	480 x 800 pixels		
...Color Depth	16-bit		131,071 colors
...Ambient Light Sensitivity	Software configurable		Adjust the sensitivity to ambient light changes.
Touch Screen			
...Size	3.42" x 6.10"		8.7 x 15.5 cm
...Type	Resistive		
Mounting Hardware			
...Included Mounting Screws	#6-32x1/4" Torx T10 (qty 2)		Secures DR6 to Wall Plate or DS1 desk stand
...Included Wall Screws	#6-20x1-1/4" (qty 4)		Drywall / cement anchors included
...Included Electrical Box Screws	#6-32x7/8" (qty 4)		Used to mount Wall Plate to an electrical box or RB1
RPI Data Input Port	To a DR Port on a HAL		RJ-45 connector
RPI Data Output Port	To the DR6		RJ-45 connector
...Power	24 VDC @ 550 mA	max	
...HAL to RPI to DR6 Distance	100 meters / 325 feet total	max	Shielded CAT 5e cable or better (see diagram)
RPI Power Requirement	100 to 240 VAC		50/60 Hz, 18 W max
Wiring	Class 2		All RJ-45 connectors
Ambient Room Temperature	104 °F / 40 °C		Maximum external loading
Unit: Conformity	CE, FCC, cCSAus		
DR6 Unit: Size	5.0"H x 7.7"W x 0.76"D		12.7 x 19.6 x 2 cm
...DR6 Weight	1 lb		455 g
...Included Wall Plate Size	4.41"H x 7.7"W		11.2 x 19.6 cm
...Included RPI Power Supply Size	1.78"H x 6.9"W x 2.79"D		4.6 x 17.6 x 7 cm
...RPI Power Supply Weight	14.1 oz		400 g
...Shipping (DR6 with RPI)	3 lb 3 oz		1.47 g
DS1 Desk Stand Accessory: Size	4.5"H x 7.6"W x 4.6"D		11.4 x 19.3 x 11.7 cm
...Weight	1 lb 1 oz		480 g
...Shipping (DS1)	1 lb 5 oz		600 g
RB1 Rack Bracket Accessory: Size	5.2"H x 19"W x .4"D		13.2 x 48.3 x 1 cm
...Weight	1 lb 1 oz		480 g
...Shipping (RB1)	1 lb 14 oz		850 g