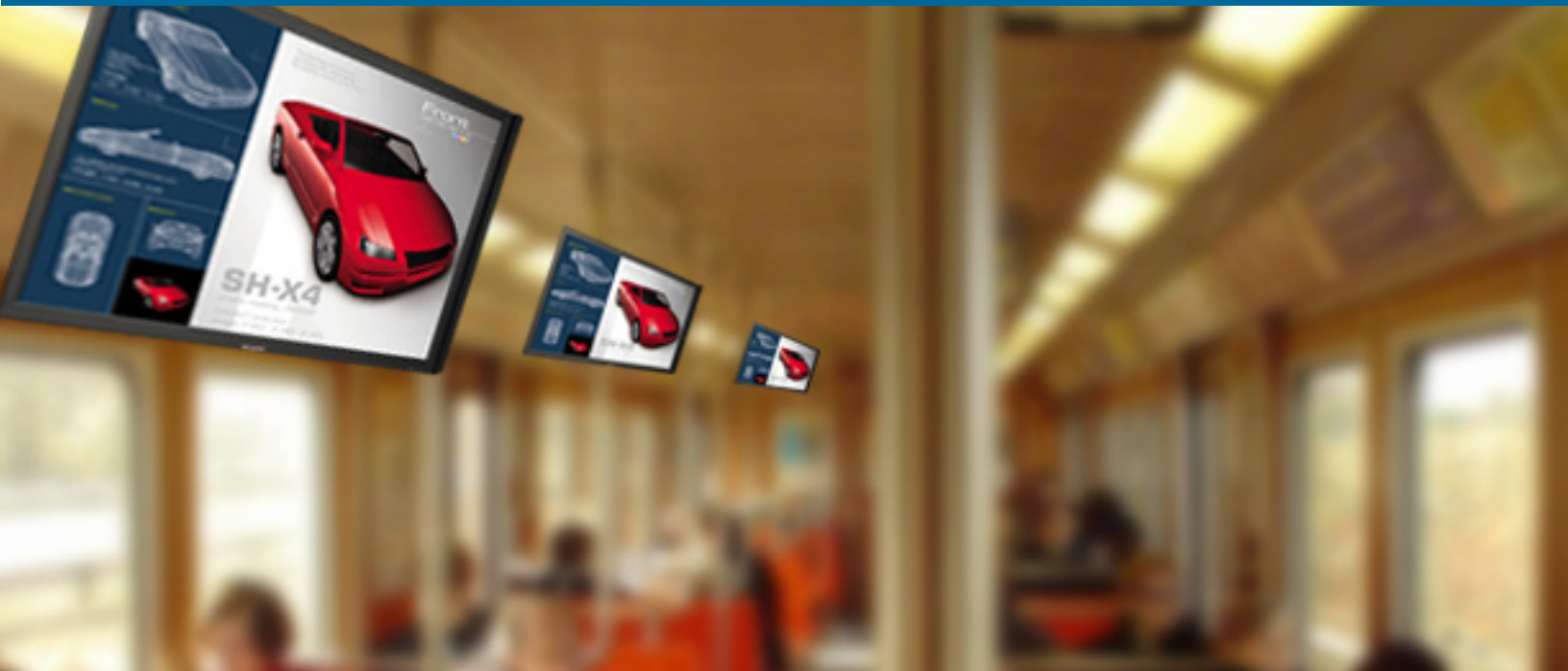


The Power of SignagePro – On the Go!



Deliver Your Message to Audiences Around the World
in Airplanes, Commuter Trains, Busses or Anywhere
Compact Digital Signage is Useful

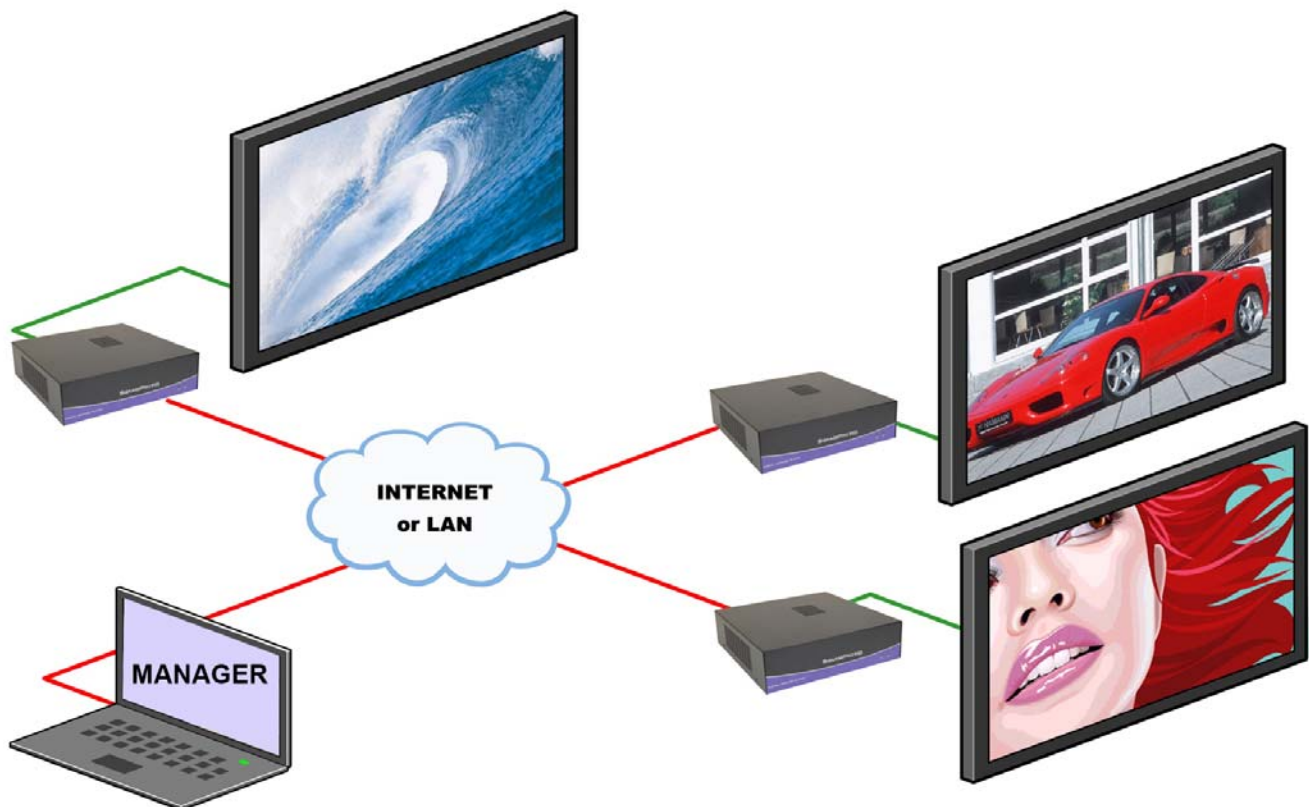
SignagePro Mobility gives you the power of SmartAVI's powerful digital signage solution in a lightweight, more compact unit than ever, allowing for easy implementation in compact spaces such as airplanes, busses, trains and other forms of public transportation.

Capable of being updated at any time from a local computer via wireless network, SignagePro Mobility has been designed to be the digital signage solution for public transportation systems integrators – as well as anyone that may be short on space but big on ideas and the need to communicate to an audience on the go.

Lightweight, compact and featuring a DVI output so that it can be used with high-resolution display screens, SignagePro Mobility is the dynamic solution for getting your message in front of customers/patrons in settings where traditional digital signage hardware has been challenging and difficult – if not impossible.

Until now.

Diagram of SignagePro Mobilty Usage:



Supported Media



Getting the Most out of SignagePro Mobility

Features:

- Compact, Lightweight Design
- Designed for Mobile Digital Signage Screens
- Supports Common Media Files Including QuickTime, JPG, GIF, AVI, MPEG, Flash, PowerPoint and MP3
- Easy-to-Use Windows®-Based Control Software
- 30 Optional Screen Layout Templates
- Powerful Multi-Zone Capability
- Supports RSS Feeds
- External Power Supply
- Wireless Configuration/Control
- Wireless or 3G Network Programmable

Applications:

- Airplanes/Jumbo Jets
- Commuter/Tourist Busses
- Taxi Signs
- Trains
- Elevators
- Theme Park Attraction Ride Vehicles
- Retail Kiosks/Temporary Points of Sale
- Small or Temporary Digital Signage Locations

The beauty of SmartAVI's SignagePro Mobility is that it's been specifically developed for digital signage that is on the go – especially for transportation mediums such as busses, trains, taxis and jumbo jets with a “captive audience” of commuters and travelers.

A great example of SignagePro Mobility's technology would be used in a fleet of commuter busses in Los Angeles. Each morning, before they leave the station, brand new digital content could be uploaded to the vehicles via wireless network installed at the main station. That information could be changed daily (or as often as the busses came through the station) and played in a continuous loop for riders.

Of course, SignagePro Mobility also has the capability of being updated on-the-fly via Internet connection so that each unit can be remotely updated while on the move, wherever they happen to be. That simply depends on the type of updating the system coordinator or administrator feels the busses need each day and then the hardware can be programmed accordingly.

Another great example of SignagePro Mobility would be integration in elevators, where menus, conference information, show schedules or even resort/casino promotions could be updated at any time via wireless/3G network.

Applications



TRAINS

As more commuters take to the rails these days, digital signage is the perfect means to convey route information, host advertising for local companies/businesses and communicate with riders about various fares, passes and schedule changes in real-time.



PLANES

Whether passengers are on a short commuter flight or a lengthy international trip, airline operators are finding digital signage technologies to be exactly what they respond to. Airlines can advertise in-flight services, menus, drink selections, or even interactive maps of where their current GPS position is at any given time.



AUTO/TAXI

There is no greater "moving billboard" than a sign on top of a taxi in any given city. Today, cab companies are switching to digital media as opposed to traditional printed signage. With the ability to change content or rotate images now in place, taxis can provide advertisement space for local companies, resort ads, show promos or anything they'd like to broadcast to other drivers and pedestrians.



ELEVATOR

The perfect "captive audience", people riding in elevators respond very well to digital signage in place, whether it be a restaurant menu, show schedule or general information – there is no better time or place to get your message in front of perspective customers. Literally!



RETAIL KIOSKS

Retail locations within shopping centers are no longer contained within four walls of leased space. Now, boutique kiosks, carts or booths line the walkways of every mall. These locations sell everything from sunglasses to teeth whitening services, and they need to grab the attention of people as they walk by. This is a perfect scenario where digital signage could be used in a small space to achieve big results and get kiosk businesses the customers they need.

Small in Size – With Big, Powerful Software

Inside the SignagePro Mobility box is software that powers your presentations; and it is amazing! Much more than a “play list” builder, the software allows you the flexibility and freedom to manage your digital content the way you want it; not simply the way you have to play it with the included program.

Channel Name	Task	Content	Video type	Duration	Length	Speed	Time	Repeat	Interval
View 1	Run	ALL	ALL	ALL	10:00:00	0:00:00:00	0:00:00:00	0:00:00:00	0:00:00:00
View 2	Run	ALL	ALL	ALL	10:00:00	0:00:00:00	0:00:00:00	0:00:00:00	0:00:00:00
View 3	Run	ALL	ALL	ALL	10:00:00	0:00:00:00	0:00:00:00	0:00:00:00	0:00:00:00
View 4	Run	ALL	ALL	ALL	10:00:00	0:00:00:00	0:00:00:00	0:00:00:00	0:00:00:00
View 5	Run	ALL	ALL	ALL	10:00:00	0:00:00:00	0:00:00:00	0:00:00:00	0:00:00:00
View 6	Run	ALL	ALL	ALL	10:00:00	0:00:00:00	0:00:00:00	0:00:00:00	0:00:00:00
View 7	Run	ALL	ALL	ALL	10:00:00	0:00:00:00	0:00:00:00	0:00:00:00	0:00:00:00
View 8	Run	ALL	ALL	ALL	10:00:00	0:00:00:00	0:00:00:00	0:00:00:00	0:00:00:00
View 9	Run	ALL	ALL	ALL	10:00:00	0:00:00:00	0:00:00:00	0:00:00:00	0:00:00:00
View 10	Run	ALL	ALL	ALL	10:00:00	0:00:00:00	0:00:00:00	0:00:00:00	0:00:00:00
View 11	Run	ALL	ALL	ALL	10:00:00	0:00:00:00	0:00:00:00	0:00:00:00	0:00:00:00
View 12	Run	ALL	ALL	ALL	10:00:00	0:00:00:00	0:00:00:00	0:00:00:00	0:00:00:00
View 13	Run	ALL	ALL	ALL	10:00:00	0:00:00:00	0:00:00:00	0:00:00:00	0:00:00:00
View 14	Run	ALL	ALL	ALL	10:00:00	0:00:00:00	0:00:00:00	0:00:00:00	0:00:00:00
View 15	Run	ALL	ALL	ALL	10:00:00	0:00:00:00	0:00:00:00	0:00:00:00	0:00:00:00
View 16	Run	ALL	ALL	ALL	10:00:00	0:00:00:00	0:00:00:00	0:00:00:00	0:00:00:00
View 17	Run	ALL	ALL	ALL	10:00:00	0:00:00:00	0:00:00:00	0:00:00:00	0:00:00:00
View 18	Run	ALL	ALL	ALL	10:00:00	0:00:00:00	0:00:00:00	0:00:00:00	0:00:00:00
View 19	Run	ALL	ALL	ALL	10:00:00	0:00:00:00	0:00:00:00	0:00:00:00	0:00:00:00
View 20	Run	ALL	ALL	ALL	10:00:00	0:00:00:00	0:00:00:00	0:00:00:00	0:00:00:00
View 21	Run	ALL	ALL	ALL	10:00:00	0:00:00:00	0:00:00:00	0:00:00:00	0:00:00:00
View 22	Run	ALL	ALL	ALL	10:00:00	0:00:00:00	0:00:00:00	0:00:00:00	0:00:00:00
View 23	Run	ALL	ALL	ALL	10:00:00	0:00:00:00	0:00:00:00	0:00:00:00	0:00:00:00
View 24	Run	ALL	ALL	ALL	10:00:00	0:00:00:00	0:00:00:00	0:00:00:00	0:00:00:00
View 25	Run	ALL	ALL	ALL	10:00:00	0:00:00:00	0:00:00:00	0:00:00:00	0:00:00:00
View 26	Run	ALL	ALL	ALL	10:00:00	0:00:00:00	0:00:00:00	0:00:00:00	0:00:00:00
View 27	Run	ALL	ALL	ALL	10:00:00	0:00:00:00	0:00:00:00	0:00:00:00	0:00:00:00
View 28	Run	ALL	ALL	ALL	10:00:00	0:00:00:00	0:00:00:00	0:00:00:00	0:00:00:00
View 29	Run	ALL	ALL	ALL	10:00:00	0:00:00:00	0:00:00:00	0:00:00:00	0:00:00:00
View 30	Run	ALL	ALL	ALL	10:00:00	0:00:00:00	0:00:00:00	0:00:00:00	0:00:00:00

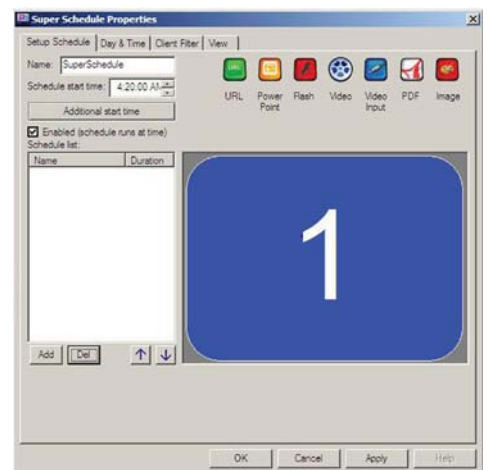
Channel	Task	Content	Video type	Duration	Length	Speed	Time	Repeat	Interval
View 1	Run	ALL	ALL	ALL	10:00:00	0:00:00:00	0:00:00:00	0:00:00:00	0:00:00:00
View 2	Run	ALL	ALL	ALL	10:00:00	0:00:00:00	0:00:00:00	0:00:00:00	0:00:00:00
View 3	Run	ALL	ALL	ALL	10:00:00	0:00:00:00	0:00:00:00	0:00:00:00	0:00:00:00
View 4	Run	ALL	ALL	ALL	10:00:00	0:00:00:00	0:00:00:00	0:00:00:00	0:00:00:00
View 5	Run	ALL	ALL	ALL	10:00:00	0:00:00:00	0:00:00:00	0:00:00:00	0:00:00:00
View 6	Run	ALL	ALL	ALL	10:00:00	0:00:00:00	0:00:00:00	0:00:00:00	0:00:00:00
View 7	Run	ALL	ALL	ALL	10:00:00	0:00:00:00	0:00:00:00	0:00:00:00	0:00:00:00
View 8	Run	ALL	ALL	ALL	10:00:00	0:00:00:00	0:00:00:00	0:00:00:00	0:00:00:00
View 9	Run	ALL	ALL	ALL	10:00:00	0:00:00:00	0:00:00:00	0:00:00:00	0:00:00:00
View 10	Run	ALL	ALL	ALL	10:00:00	0:00:00:00	0:00:00:00	0:00:00:00	0:00:00:00
View 11	Run	ALL	ALL	ALL	10:00:00	0:00:00:00	0:00:00:00	0:00:00:00	0:00:00:00
View 12	Run	ALL	ALL	ALL	10:00:00	0:00:00:00	0:00:00:00	0:00:00:00	0:00:00:00
View 13	Run	ALL	ALL	ALL	10:00:00	0:00:00:00	0:00:00:00	0:00:00:00	0:00:00:00
View 14	Run	ALL	ALL	ALL	10:00:00	0:00:00:00	0:00:00:00	0:00:00:00	0:00:00:00
View 15	Run	ALL	ALL	ALL	10:00:00	0:00:00:00	0:00:00:00	0:00:00:00	0:00:00:00
View 16	Run	ALL	ALL	ALL	10:00:00	0:00:00:00	0:00:00:00	0:00:00:00	0:00:00:00
View 17	Run	ALL	ALL	ALL	10:00:00	0:00:00:00	0:00:00:00	0:00:00:00	0:00:00:00
View 18	Run	ALL	ALL	ALL	10:00:00	0:00:00:00	0:00:00:00	0:00:00:00	0:00:00:00
View 19	Run	ALL	ALL	ALL	10:00:00	0:00:00:00	0:00:00:00	0:00:00:00	0:00:00:00
View 20	Run	ALL	ALL	ALL	10:00:00	0:00:00:00	0:00:00:00	0:00:00:00	0:00:00:00
View 21	Run	ALL	ALL	ALL	10:00:00	0:00:00:00	0:00:00:00	0:00:00:00	0:00:00:00
View 22	Run	ALL	ALL	ALL	10:00:00	0:00:00:00	0:00:00:00	0:00:00:00	0:00:00:00
View 23	Run	ALL	ALL	ALL	10:00:00	0:00:00:00	0:00:00:00	0:00:00:00	0:00:00:00
View 24	Run	ALL	ALL	ALL	10:00:00	0:00:00:00	0:00:00:00	0:00:00:00	0:00:00:00
View 25	Run	ALL	ALL	ALL	10:00:00	0:00:00:00	0:00:00:00	0:00:00:00	0:00:00:00
View 26	Run	ALL	ALL	ALL	10:00:00	0:00:00:00	0:00:00:00	0:00:00:00	0:00:00:00
View 27	Run	ALL	ALL	ALL	10:00:00	0:00:00:00	0:00:00:00	0:00:00:00	0:00:00:00
View 28	Run	ALL	ALL	ALL	10:00:00	0:00:00:00	0:00:00:00	0:00:00:00	0:00:00:00
View 29	Run	ALL	ALL	ALL	10:00:00	0:00:00:00	0:00:00:00	0:00:00:00	0:00:00:00
View 30	Run	ALL	ALL	ALL	10:00:00	0:00:00:00	0:00:00:00	0:00:00:00	0:00:00:00

Take control of when and how your presentation is shown with the software’s scheduling feature. Within the scheduler, you can determine how, when and how long a particular file will be played and displayed on your monitor or monitors. Play a file once or multiple times, on whichever screen you determine – you’re in control

The task manager portion of the control software gives each user the ability to set SignagePro Mobility up to multi-zone (more than one task/file displayed at once on the screen) or display your content as one image at a time. The choice is yours and the possibilities are endless!

Having the ability to multi-zone with SignagePro Mobility is essentially being able to break a single display monitor into as many “pieces” as the user wants, sectioning off portions of the screen for unique images, video or other files to be showcased in. This is an exceptionally powerful tool in that it allows for different media to be played at once without multiple screens being used. Multi-zone capability gives the user total freedom and creative permission to use the entire monitor to showcase whatever needs to be shown, be it two, four, 8 or more files!

In addition to the multi-zone capability of SignagePro Mobility, the control software also comes pre-loaded with 30 fantastic optional templates, which users can use to get their presentations up and running immediately, if they’d like. The inclusion of these templates, combined with the freedom to create from scratch within the program rounds out SignagePro Mobility’s user-friendly, fully-loaded software.



Specifications



SignagePro Mobility Player Specifications

Form factor

- Mini-ITX (6.70 inches by 6.70 inches [170mm x 170mm])
- Board z-height is 20mm

Processor Passively cooled, integrated single core Intel® Atom™ processor N270 with a 533 MHz system bus and 512KB L2 cache Chipset

Passively cooled, mobile Intel® 945GSE Express Chipset:

- Intel® 82945GSE Graphics and Memory Controller Hub (GMCH)
- Intel® 82801GBM I/O Controller Hub (ICH7-M)

Memory

Single 200-pin DDR2 SO-DIMM connector:

- Support for DDR2 533 MHz SO-DIMMs (DDR2 800 MHz and DDR2 667 MHz validated at 533 MHz)
- Support for up to 2 GB single-channel system memory

Audio

Realtek ALC662* codec for 2+2ch (multi-streaming) Intel® High Definition

Audio (Intel® HD Audio):

- Front panel microphone/headphone header
- S/PDIF digital audio header
- Internal mono speaker header

Video

Intel® Graphics Media Accelerator 950 (Intel® GMA 950) dual-onboard graphics support:1

- Analog displays (VGA)
- Digital displays (DVI-D)

I/O Control

LAN support Realtek 10/100/1000 Ethernet Controller* Peripheral interfaces

- 3 USB 2.0 ports (3 back panel ports)
- 2 Serial ATA 3.0 Gb/s connectors (supporting IDE and AHCI)
- 1 power header for storage devices
- 1 parallel ATA port (44-pin mobile header)

Power Integrated DC-to-DC circuitry:

- 12 VDC jack on back panel for external power supply
- ATX12V 2 x 2 power connector for alternate internal power supply



Ordering Information

AP-SNSV-WS	SignageManager Software with ASUSBKEY; one per system
AP-SNCL-M4GS	SignagePro Mobility Player with 4GB Flash Memory. Includes: PS12VDC5A
AP-SNCL-M40GS	SignagePro Mobility Player with 40GB Hard drive. Includes: PS12VDC5A

Many industry leaders have already embraced SmartAVI's advanced technology and have eagerly implemented our products throughout their organizations. Such companies include:



Smart-AVI
SMART AUDIO VIDEO INNOVATION